



THE CITY OF KEY WEST
Tree Commission

Post Office Box 1409 - Key West, FL 33041-1409
Telephone: 305-809-3723

September 30, 2024

Garrison Bight SMI LLC
17330 Preston Road, Suite 220A
Dallas, Texas 75252

To Whom It May Concern:

Regarding a request for approval of the Final Landscape Plan dated May 15, 2024, for the property located at 711 Eisenhower Drive, Key West, Florida. Review of the file indicates that the existing landscape plans are consistent with the conceptual landscape plans approved by the City of Key West Tree Commission on July 2, 2024, at the regularly scheduled meeting. Therefore, the landscape plan received and stamped on June 25, 2024 (copy attached), is approved for the Final Landscape Plan. The file is now ready to be heard by the City Commission.

If you have any questions, please call the office at (305) 809-3768.

Sincerely,

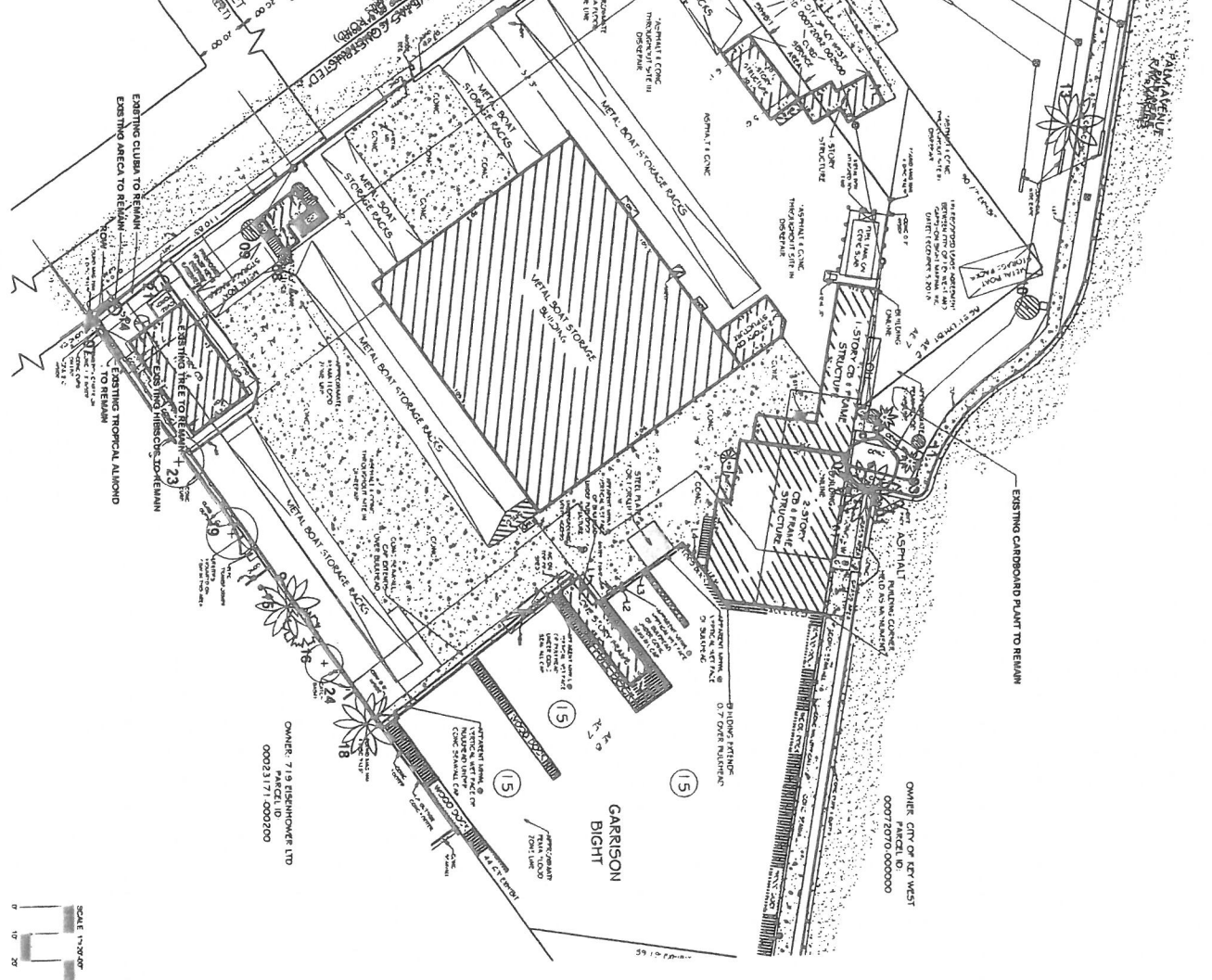
A handwritten signature in blue ink, appearing to read "Amy Dismukes".

Amy Dismukes
Urban Forestry Manager
City of Key West
1300 White Street
Key West, FL 33040
Office: (305) 809-3768
amy.dismukes@cityofkeywest-fl.gov

ec: AJ Davila – Smith Hawks, PL

EXISTING VEGETATION SURVEY

ID#	LOCALITY NAME	COMMON NAME	CULTURE	HEIGHT	CANOPY	COVERAGE	DISTRIBUTION
1	2	3	4	5	6	7	8
1	1	1	1	1	1	1	1
2	2	2	2	2	2	2	2
3	3	3	3	3	3	3	3
4	4	4	4	4	4	4	4
5	5	5	5	5	5	5	5
6	6	6	6	6	6	6	6
7	7	7	7	7	7	7	7
8	8	8	8	8	8	8	8
9	9	9	9	9	9	9	9
10	10	10	10	10	10	10	10
11	11	11	11	11	11	11	11
12	12	12	12	12	12	12	12
13	13	13	13	13	13	13	13
14	14	14	14	14	14	14	14
15	15	15	15	15	15	15	15
16	16	16	16	16	16	16	16
17	17	17	17	17	17	17	17
18	18	18	18	18	18	18	18
19	19	19	19	19	19	19	19
20	20	20	20	20	20	20	20
21	21	21	21	21	21	21	21
22	22	22	22	22	22	22	22
23	23	23	23	23	23	23	23
24	24	24	24	24	24	24	24



OWNER: 719 EISENHOWER LTD
PARCEL ID: 00023171-000200

SCALE: 1"=30'

811
FLORIDA
NORTH

Landscape Plan
Garrison Bight Marina
711 Eisenhower Drive
Key West, Florida

Project Number: 23148
Revision Date: 9-25-23

Client/Description: Garrison Bight Marina
Eisenhower Drive
Key West, Florida

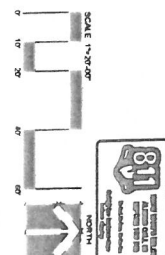
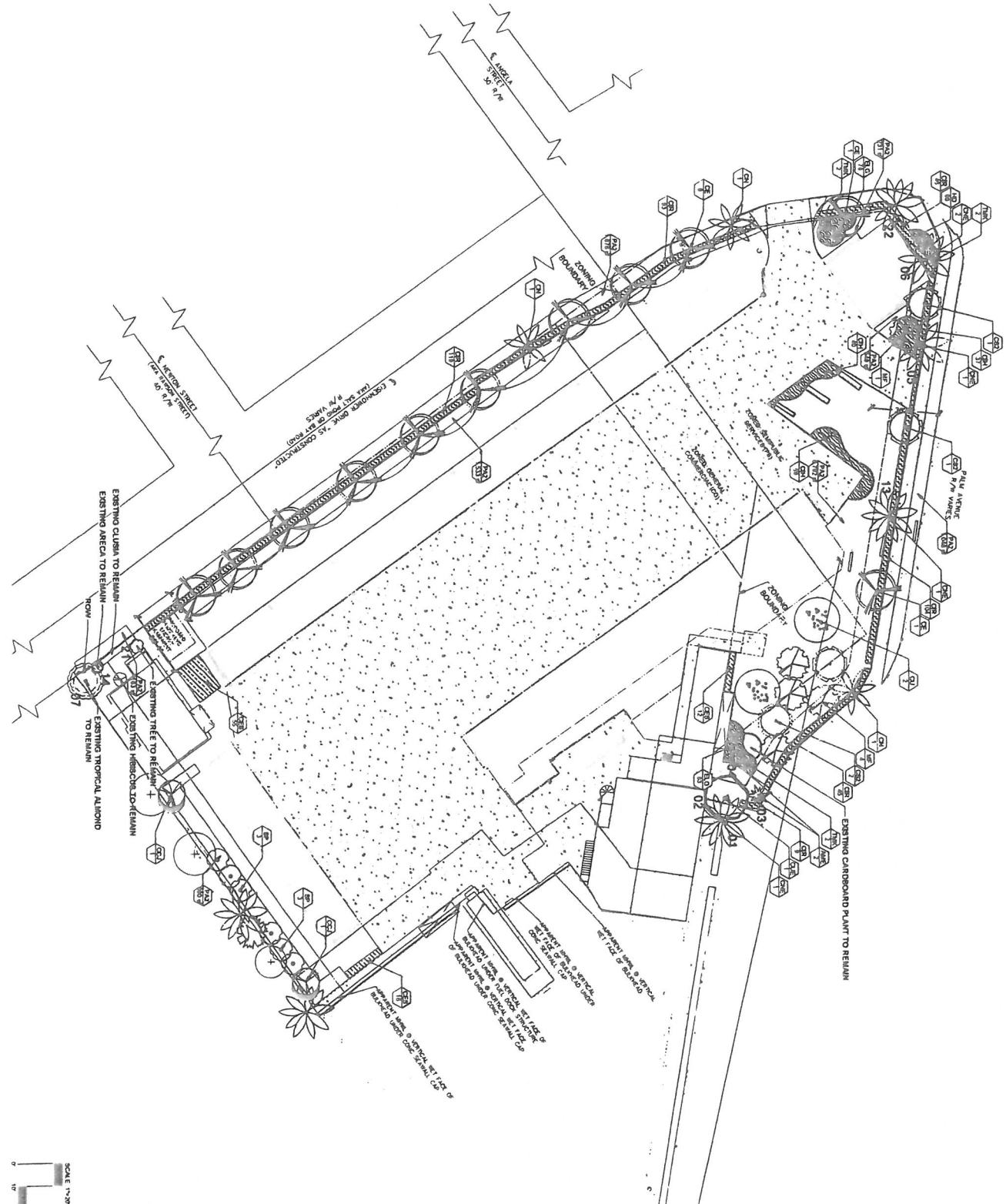
Scale: 1"=30'

TD-1
Sheet 1 of 3

Revision Dates

Hugh Johnson
John Danner
2023.06.23

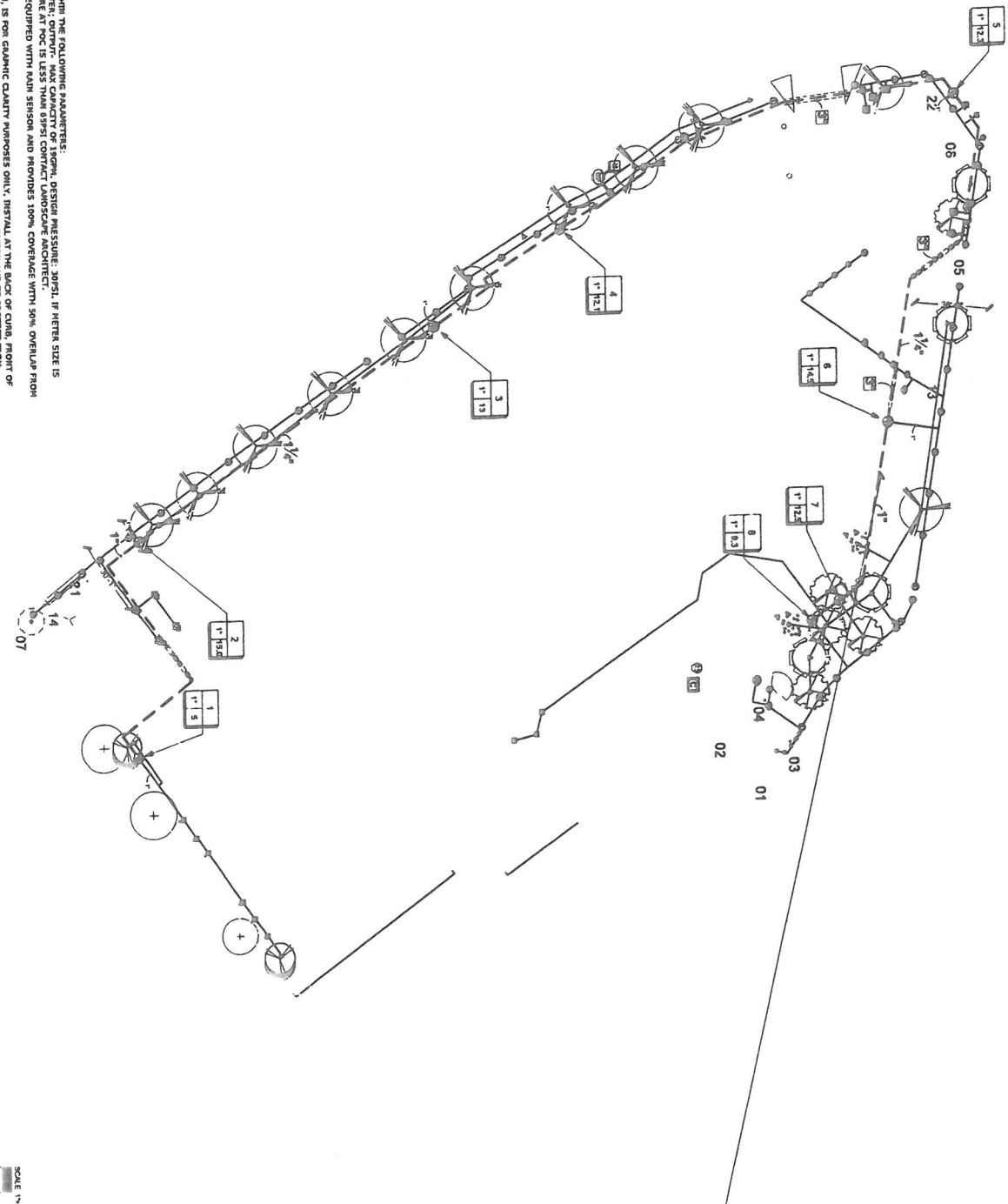
AAL
Architectural Alliance Landscape



LP-1
 Sheet 2 of 3

Landscape Plan Garrison Bight Marina 711 Eisenhower Drive Key West, Florida		01-01 CITY COMMENTS 01-02 CITY COMMENTS 01-03 CITY COMMENTS Revision Dates	 John J. Huggins Registered Professional Landscaper No. 2976, State of Florida No. 14899-18	 AAL Architectural Alliance Landscape <small>1572 SW 24th St. Ft. Lauderdale, FL 33311 (954) 331-1111 1011 NW 14th St. Ft. Lauderdale, FL 33311 (954) 331-1111</small>
--	--	---	--	---

SYSTEM DESIGNED TO OPERATE WITHIN THE FOLLOWING PARAMETERS:
 1. SYSTEM TO BE OPERATED ON PUMP OR STATIC PRESSURE AT POC IS LESS THAN 80 PSI CONTACT LANDSCAPE ARCHITECT.
 2. AUTOMATIC IRRIGATION SYSTEM IS EQUIPPED WITH RAIN SENSOR AND PROVIDES 100% COVERAGE WITH 50% OVERLAP FROM AN APPROVED WATER SOURCE.
 3. MAINLINE LOCATION, WHERE SHOWN, IS FOR GAINING QUANTITY PURPOSES ONLY. INSTALL AT THE BACK OF CURB, FRONT OF WALK, BACK OF WALK, OR ADJACENT TO OTHER BUILDINGS OR DRIVEWAYS TO PROTECT FROM DAMAGE. ENSURE MAINLINE IS INSTALLED IN ACCORDANCE WITH IRRIGATION SPECIFICATIONS AND DETAILS.
 4. INSTALL DIRECT WIRE CONTROL WIRE ADJACENT TO MAINLINE FROM CONTROLLER TO VALVES. USE 2" CONDUIT FOR CONTROL WIRE STRIPS. (SEE DETAIL)



811
 CALL BEFORE YOU DIG
 1-800-4-A-SHIELD
 1-800-475-2539

IR-1
 IRRIGATION PLAN

Sheet Number	IR-1
Sheet of	07
Release Date	2-20-23
Project Number	23148
Drawing Name	IRRIGATION PLAN

Sheet Description
 IRRIGATION PLAN

Irrigation Plan
Garrison Bight Marina
 711 Eisenhower Drive
 Key West, Florida

Revision	Date

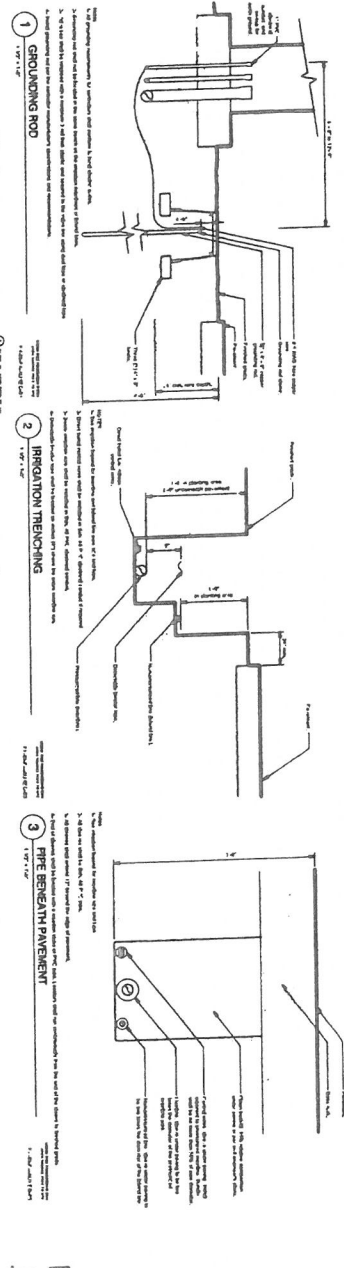
Hudson
 Registered Professional Engineer
 License No. 12016
 State of Florida

AAL
 Architectural Alliance Landscape
 112 SW 11th Ave., Suite 1000, Ft. Lauderdale, FL 33304
 (954) 525-1111

15-N CITY COMMENTS

IRRIGATION SCHEDULE

SYMBOL	MANUFACTURER/MODEL/DESCRIPTION	QTY	PSI
1	RAIN ERG 1015-200 10 SERIES SPRINKLER WITH COOLING WATER SEAL, 1/2" NPT REMA... THREADED INLET, WITH OPERATING CAPABILITY, 0.100... COMPENSATION.	30	30
2	RAIN ERG 1015-200 12 SERIES SPRINKLER WITH COOLING WATER SEAL, 1/2" NPT REMA... THREADED INLET, WITH OPERATING CAPABILITY, 0.100... COMPENSATION.	48	30
3	RAIN ERG 1015-200 3 SERIES SPRINKLER WITH COOLING WATER SEAL, 1/2" NPT REMA... THREADED INLET, WITH OPERATING CAPABILITY, 0.100... COMPENSATION.	30	30
4	RAIN ERG 1015-200 8 SERIES SPRINKLER WITH COOLING WATER SEAL, 1/2" NPT REMA... THREADED INLET, WITH OPERATING CAPABILITY, 0.100... COMPENSATION.	4	30
5	RAIN ERG 1015-200 10 SERIES SPRINKLER WITH COOLING WATER SEAL, 1/2" NPT REMA... THREADED INLET, WITH OPERATING CAPABILITY, 0.100... COMPENSATION.	1	30
6	RAIN ERG 1015-200 12 SERIES SPRINKLER WITH COOLING WATER SEAL, 1/2" NPT REMA... THREADED INLET, WITH OPERATING CAPABILITY, 0.100... COMPENSATION.	7	30
7	RAIN ERG 1015-200 3 SERIES SPRINKLER WITH COOLING WATER SEAL, 1/2" NPT REMA... THREADED INLET, WITH OPERATING CAPABILITY, 0.100... COMPENSATION.	5	30
8	RAIN ERG 1015-200 8 SERIES SPRINKLER WITH COOLING WATER SEAL, 1/2" NPT REMA... THREADED INLET, WITH OPERATING CAPABILITY, 0.100... COMPENSATION.	5	30
9	RAIN ERG 1015-200 10 SERIES SPRINKLER WITH COOLING WATER SEAL, 1/2" NPT REMA... THREADED INLET, WITH OPERATING CAPABILITY, 0.100... COMPENSATION.	4	30
10	RAIN ERG 1015-200 12 SERIES SPRINKLER WITH COOLING WATER SEAL, 1/2" NPT REMA... THREADED INLET, WITH OPERATING CAPABILITY, 0.100... COMPENSATION.	2	30
11	RAIN ERG 1015-200 3 SERIES SPRINKLER WITH COOLING WATER SEAL, 1/2" NPT REMA... THREADED INLET, WITH OPERATING CAPABILITY, 0.100... COMPENSATION.	2	30
12	RAIN ERG 1015-200 8 SERIES SPRINKLER WITH COOLING WATER SEAL, 1/2" NPT REMA... THREADED INLET, WITH OPERATING CAPABILITY, 0.100... COMPENSATION.	35	20
13	RAIN ERG 1015-200 10 SERIES SPRINKLER WITH COOLING WATER SEAL, 1/2" NPT REMA... THREADED INLET, WITH OPERATING CAPABILITY, 0.100... COMPENSATION.	1	20
14	RAIN ERG 1015-200 12 SERIES SPRINKLER WITH COOLING WATER SEAL, 1/2" NPT REMA... THREADED INLET, WITH OPERATING CAPABILITY, 0.100... COMPENSATION.	1	20
15	RAIN ERG 1015-200 3 SERIES SPRINKLER WITH COOLING WATER SEAL, 1/2" NPT REMA... THREADED INLET, WITH OPERATING CAPABILITY, 0.100... COMPENSATION.	1	20
16	RAIN ERG 1015-200 8 SERIES SPRINKLER WITH COOLING WATER SEAL, 1/2" NPT REMA... THREADED INLET, WITH OPERATING CAPABILITY, 0.100... COMPENSATION.	1	20
17	RAIN ERG 1015-200 10 SERIES SPRINKLER WITH COOLING WATER SEAL, 1/2" NPT REMA... THREADED INLET, WITH OPERATING CAPABILITY, 0.100... COMPENSATION.	1	20
18	RAIN ERG 1015-200 12 SERIES SPRINKLER WITH COOLING WATER SEAL, 1/2" NPT REMA... THREADED INLET, WITH OPERATING CAPABILITY, 0.100... COMPENSATION.	1	20
19	RAIN ERG 1015-200 3 SERIES SPRINKLER WITH COOLING WATER SEAL, 1/2" NPT REMA... THREADED INLET, WITH OPERATING CAPABILITY, 0.100... COMPENSATION.	1	20
20	RAIN ERG 1015-200 8 SERIES SPRINKLER WITH COOLING WATER SEAL, 1/2" NPT REMA... THREADED INLET, WITH OPERATING CAPABILITY, 0.100... COMPENSATION.	1	20
21	RAIN ERG 1015-200 10 SERIES SPRINKLER WITH COOLING WATER SEAL, 1/2" NPT REMA... THREADED INLET, WITH OPERATING CAPABILITY, 0.100... COMPENSATION.	1	20
22	RAIN ERG 1015-200 12 SERIES SPRINKLER WITH COOLING WATER SEAL, 1/2" NPT REMA... THREADED INLET, WITH OPERATING CAPABILITY, 0.100... COMPENSATION.	1	20
23	RAIN ERG 1015-200 3 SERIES SPRINKLER WITH COOLING WATER SEAL, 1/2" NPT REMA... THREADED INLET, WITH OPERATING CAPABILITY, 0.100... COMPENSATION.	1	20
24	RAIN ERG 1015-200 8 SERIES SPRINKLER WITH COOLING WATER SEAL, 1/2" NPT REMA... THREADED INLET, WITH OPERATING CAPABILITY, 0.100... COMPENSATION.	1	20
25	RAIN ERG 1015-200 10 SERIES SPRINKLER WITH COOLING WATER SEAL, 1/2" NPT REMA... THREADED INLET, WITH OPERATING CAPABILITY, 0.100... COMPENSATION.	1	20
26	RAIN ERG 1015-200 12 SERIES SPRINKLER WITH COOLING WATER SEAL, 1/2" NPT REMA... THREADED INLET, WITH OPERATING CAPABILITY, 0.100... COMPENSATION.	1	20
27	RAIN ERG 1015-200 3 SERIES SPRINKLER WITH COOLING WATER SEAL, 1/2" NPT REMA... THREADED INLET, WITH OPERATING CAPABILITY, 0.100... COMPENSATION.	1	20
28	RAIN ERG 1015-200 8 SERIES SPRINKLER WITH COOLING WATER SEAL, 1/2" NPT REMA... THREADED INLET, WITH OPERATING CAPABILITY, 0.100... COMPENSATION.	1	20
29	RAIN ERG 1015-200 10 SERIES SPRINKLER WITH COOLING WATER SEAL, 1/2" NPT REMA... THREADED INLET, WITH OPERATING CAPABILITY, 0.100... COMPENSATION.	1	20
30	RAIN ERG 1015-200 12 SERIES SPRINKLER WITH COOLING WATER SEAL, 1/2" NPT REMA... THREADED INLET, WITH OPERATING CAPABILITY, 0.100... COMPENSATION.	1	20



1 REDUCED PRESSURE BACKFLOW DEVICE

2 IRRIGATION TRENCHING

3 FIRE BRANCH PAVEMENT

4 TUBE SPRAY FLEX ASSEMBLY

5 SHRUB SPRAY HIGH-POP MANEX ASSEMBLY

6 SHRUB SPRAY HIGH-POP MANEX ASSEMBLY

7 WALL MOUNT CONTROLLER

8 ELECTRICAL REMOTE CONTROL VALVE

9 SHRUB SPRAY ON FIXED RISER

10 BUBBLER ON CORNA FLEX HOSE RISER

11 IRRIGATION BUBBLER W/ LAYOUT

12 IRRIGATION BUBBLER W/ LAYOUT

Irriation Plan
Garrison Bight Marina
 711 Eisenhower Drive
 Key West, Florida

Architectural Alliance Landscape
AAL
 11111 NE 11th Ave, Suite 100
 Ft. Lauderdale, FL 33322
 Phone: (954) 561-1111
 Fax: (954) 561-1112
 Email: info@aalandscape.com
 www.aalandscape.com

Sheet 2 of 3

3-sheet Dwg
 Project No. 23148
 Drawing No. IR-2

DATE: 02/20/23

