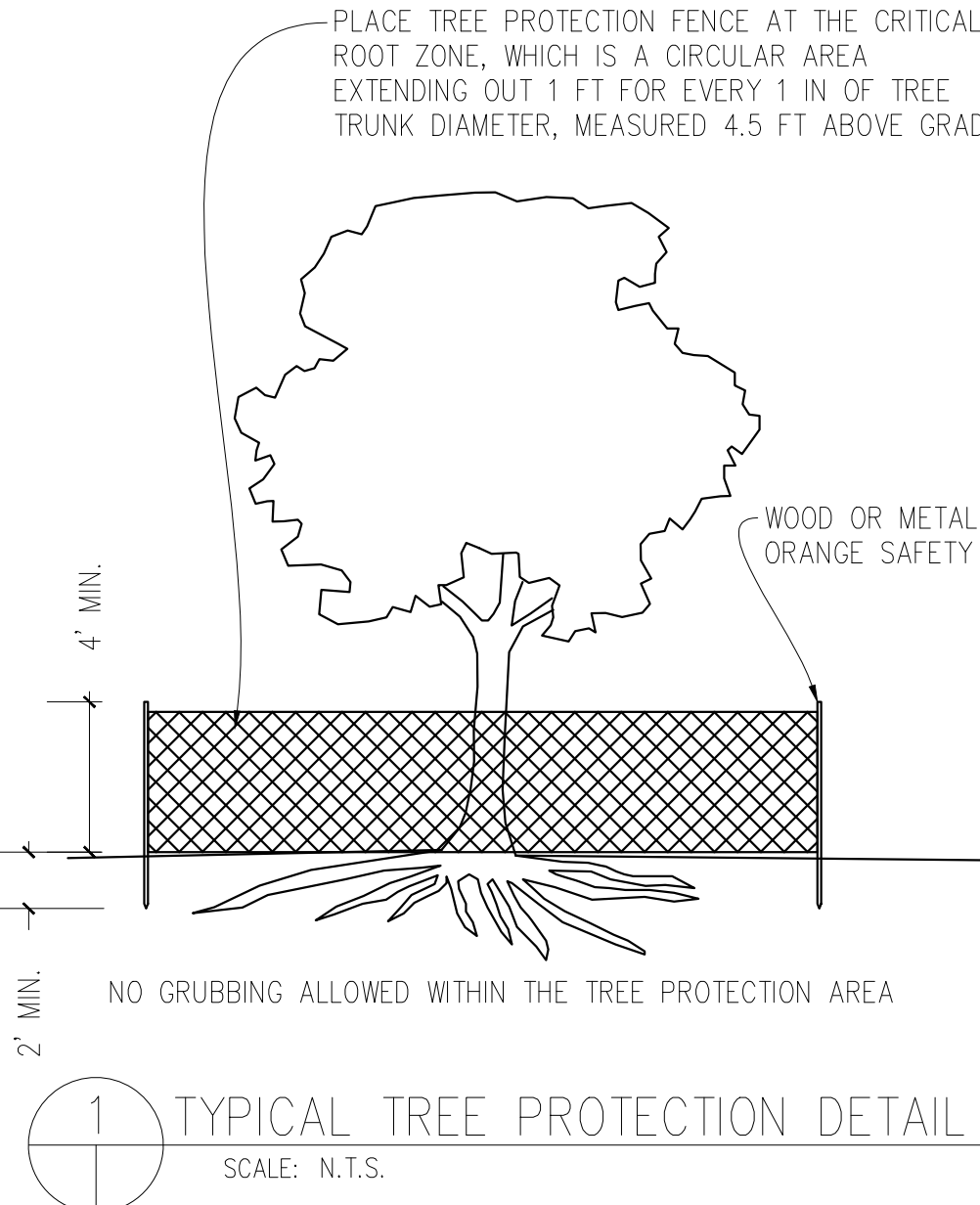


LEGEND

ABBREVIATION	TREES
GL	GUMBO LIMBO
BO	BLACK OLIVE
PO	POINCIANA
WT	WOMEN'S TONGUE
CP	COCONUT PALM
CMP	CHRISTMAS PALM
BC	BARBADOS CHERRY
BW	BUTONWOOD
FB	FICUS BENJAMIN
FC	FICUS CITROFOLIA
B	BIGMARK PALM
PP	PIGEON PLUM
A	ARECA
W	WASHINGTONIAN
KT	KEYS THATCH
TP	TRIANGLE PALM
TAB	TABEBUIA
F	FRANGIPANI
BC	BAY CEDAR
TRP	TRAVELERS PALM
SB	SILVER BUTTWOOD
⊗	TREE TO BE RELOCATED
⊙	TREE TO BE REMOVED
●	TREE TO BE PROTECTED
NR	NOT REGULATED
NPR	NO PERMIT REQUIRED

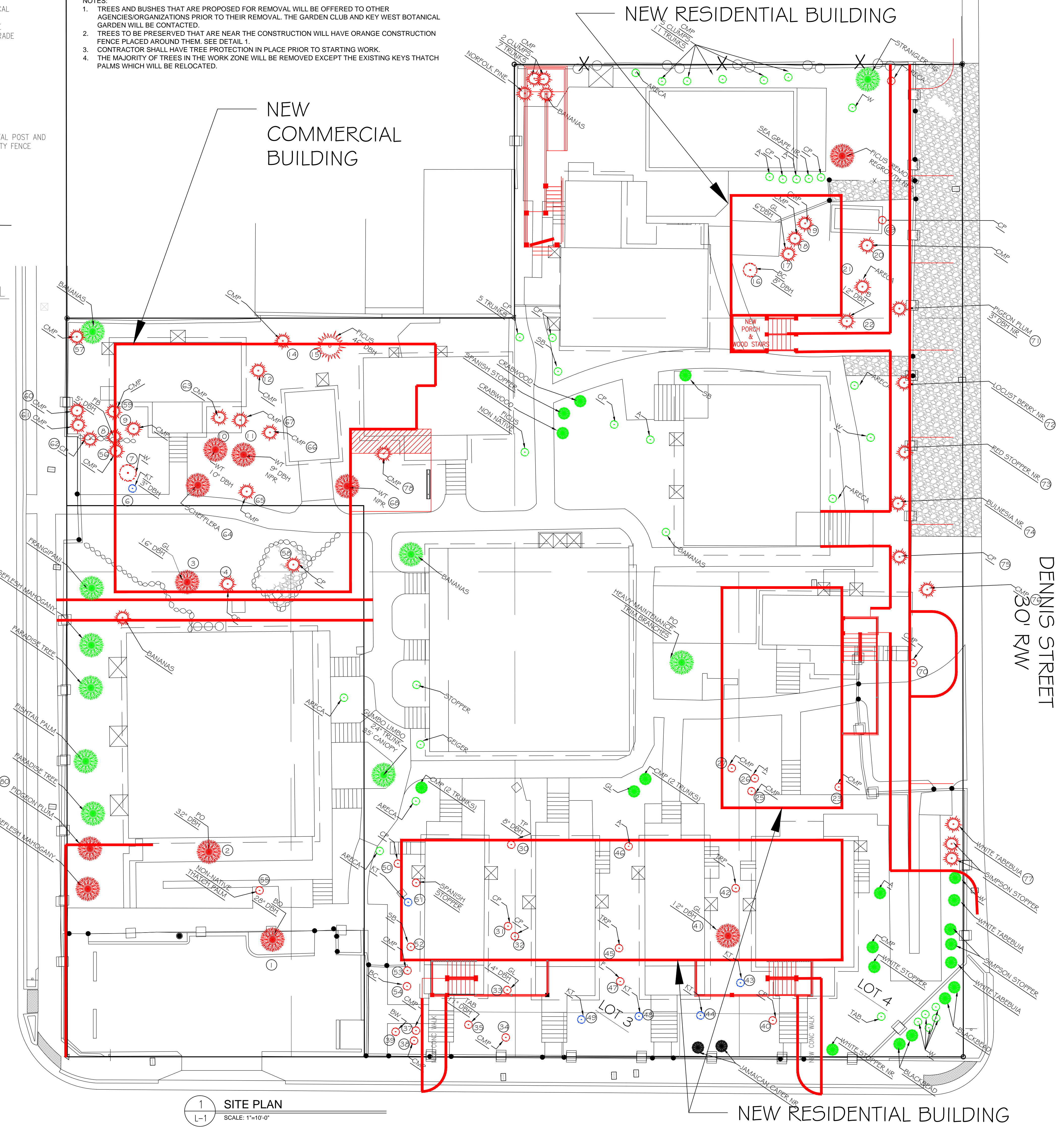


- NOTES:
- TREES AND BUSHES THAT ARE PROPOSED FOR REMOVAL WILL BE OFFERED TO OTHER AGENCIES/ORGANIZATIONS PRIOR TO THEIR REMOVAL. THE GARDEN CLUB AND KEY WEST BOTANICAL GARDEN WILL BE CONTACTED.
 - TREES TO BE PRESERVED THAT ARE NEAR THE CONSTRUCTION WILL HAVE ORANGE CONSTRUCTION FENCE PLACED AROUND THEM. SEE DETAIL 1.
 - CONTRACTOR SHALL HAVE TREE PROTECTION IN PLACE PRIOR TO STARTING WORK.
 - THE MAJORITY OF TREES IN THE WORK ZONE WILL BE REMOVED EXCEPT THE EXISTING KEYS THATCH PALMS WHICH WILL BE RELOCATED.

TREE ID	Species	DBH	Relocate/Remove	Palm Hgt
1	Black Olive	28	Remove	N/A
2	Poinciana	32	Remove	N/A
3	Gumbo Limbo	16	Remove	N/A
4	Coconut Palm (2 Trunks)		Remove	<10ft
6	Keys Thatch		Relocate	<10ft
7	Washingtonian Palm		Remove	<10ft
8	Ficus Benjamin	5	Remove	N/A
9	Christmas Tree Palm		Remove	<10ft
10	Woman's Tongue	10	Remove	N/A
11	Woman's Tongue	9	Remove	N/A
12	Christmas Tree Palm		Remove	<10ft
14	Christmas Tree Palm (2 Trunks)		Remove	<10ft
15	Ficus Citrifolia	46	Remove	N/A
16	Barbados Cherry	8	Remove	N/A
17	Gumbo Limbo	6	Remove	N/A
18	Christmas Tree Palm		Remove	>10ft
19	Christmas Tree Palm		Remove	>10ft
20	Christmas Tree Palm		Remove	>10ft
21	Areca Palm		Remove	<10ft
22	Bismark Palm	12	Remove	<10ft
23	Christmas Tree Palm		Remove	>10ft
25	Christmas Tree Palm (2 Trunks)		Remove	>10ft
26	Areca Palm		Remove	>10ft
27	Christmas Tree Palm (3 Trunks)		Remove	>10ft
30	Triangle Palm		Remove	<10ft
31	Coconut Palm		Remove	>10ft
32	Coconut Palm		Remove	>10ft
33	Gumbo Limbo	14	Remove	N/A
34	Christmas Tree Palm		Remove	>10ft
35	Tabebuia	11	Remove	N/A
37	Christmas Tree Palm		Remove	>10ft
38	Christmas Tree Palm (2 Trunks)		Remove	>10ft
39	Green Buttonwood	6	Remove	N/A
40	Coconut Palm		Remove	>10ft
41	Gumbo Limbo	12	Remove	N/A
42	Travelers Palm		Remove	<10ft
43	Keys Thatch		Relocate	<10ft
44	Keys Thatch		Relocate	<10ft
45	Travelers Palm		Relocate	<10ft
46	Areca Palm		Remove	<10ft
47	Frangipani	6	Remove	N/A
48	Keys Thatch		Relocate	<10ft
49	Keys Thatch		Relocate	<10ft
50	Coconut Palm		Remove	>10ft
51	Keys Thatch		Relocate	<10ft
52	Silver Buttonwood	9	Remove	N/A
53	Christmas Tree Palm		Remove	>10ft
54	Bay Cedar		Remove	N/A
55	Non Native Thatch Palm		Remove	<10ft
56	Christmas Tree Palm		Remove	<10ft
57	Christmas Tree Palm (3 Trunks)		Remove	<10ft
58	Coconut Palm		Remove	<10ft
59	Christmas Tree Palm (2 Trunks)		Remove	<10ft
60	Christmas Tree Palm		Remove	<10ft
61	Christmas Tree Palm		Remove	<10ft
62	Coconut Palm		Remove	<10ft
63	Christmas Tree Palm		Remove	<10ft
64	Schefflera		Remove	N/A
65	Christmas Tree Palm		Remove	<10ft
66	Christmas Tree Palm		Remove	<10ft
67	Christmas Tree Palm		Remove	<10ft
68	Woman's Tongue	2	Remove	N/A
69	Coconut Palm		Remove	<10ft
70	Christmas Tree Palm		Remove	<10ft
71	Pigeon Plum	<3"	Remove	N/A
72	Locust Berry	<3"	Remove	N/A
73	Red Stopper	<3"	Remove	N/A
74	Bulnesia		Remove	N/A
75	Coconut Palm		Remove	<10ft
76	Christmas Tree Palm		Remove	<10ft
77	White Tabebuia	<3"	Remove	N/A
78	Christmas Tree Palm		Remove	<10ft
80	Pigeon Plum	<4"	Remove	N/A
81	Horseflesh Mahogany	<4"	Remove	N/A

BERTHA STREET
50' RW

DENNIS STREET
30' RW



1 SITE PLAN
L-1 SCALE: 1"=10'-0"

Meridian Engineering LLC
201 Front Street, Suite 210
Key West, Florida 33040
AUTHORIZATION #29401
ph 305-293-5263 fax 293-4899

Seal:

NOT VALID FOR CONSTRUCTION UNLESS
SIGNED AND SEALED IN THIS BLOCK
RICHARD J. MILELLI
PE #58315

General Notes:

AIDS
HELP
BERTHA AND VENETIA STREETS
KEY WEST, FLORIDA

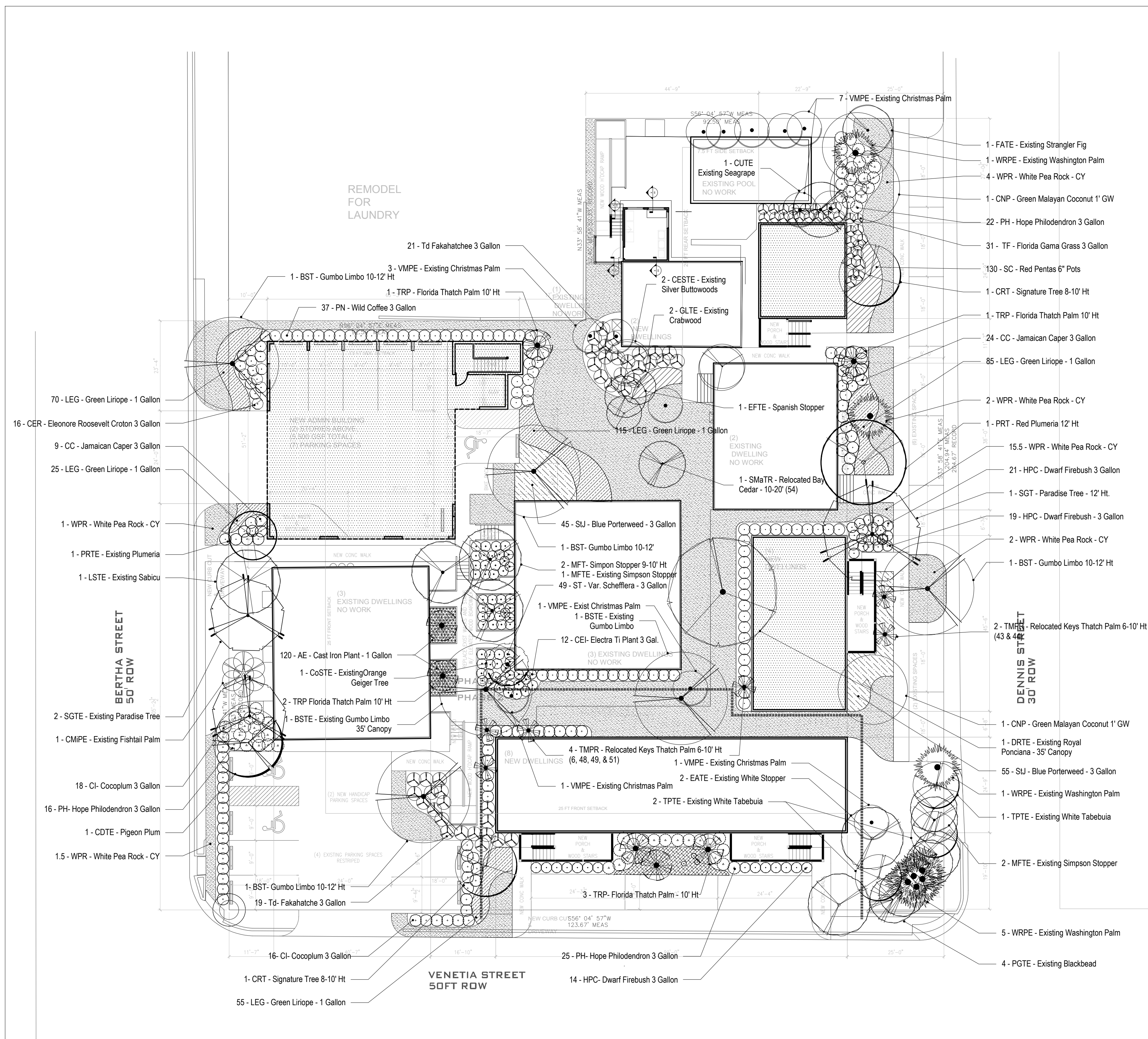
Drawn By: RJM Checked By: RJM
Project No. 11-0102 Scale: AS NOTED
HTA AutoCad File No. &

Revisions:

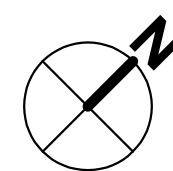
Title: TREE PERMIT PLAN

Sheet Number: L-1.1

Date: 05.21.14



PRELIMINARY
LANDSCAPE PLAN
SCALE: 1" = 16'



L Key	New	Existing	Botanical Name	Common Name	Native Yes	Native No	Caliper	Height Installed	Height Maturity	Canopy	Quantity	Container
TREES												
BST	X		Bursera simaruba	Gumbo Limbo	X		2 1/2"	10-12'	60"		4	30 Gallon
BSTE	X		Bursera simaruba	Gumbo Limbo	X				60"		1	NA
BSTE	X		Bursera simaruba	Gumbo Limbo	X		24"		60"	35'	1	NA
CDTE	X		Coccoloba diversifolia	Pigeon Plum	X				50x35'		1	
CESTE	X		Conocarpus erectus 'Seacape'	Silver Buttonwood	X				20'		2	NA
CoSTE	X		Cordia sebestiana	Orange Geiger	X			15'	15'		1	NA
CRT	X		Clusia rosea	Signature Tree	X			8-10'	30'		2	25 Gallon
CUTE	X		Coccoloba uvifera	Seagrape	X				50'			
DRTE	X		Delonix regia	Royal Poinciana		X	16"		40'	35'	1	NA
EATE	X		Eugenia axillaris	White Stopper	X				25'		2	
EFTE	X		Eugenia foetida	Spanish Stopper	X						1	
FATE	X		Ficus auriculata	Strangler Fig								
GLTE	X		Gymnanthes lucida	Crabwood	X						2	NA
LSTE	X		Lysiloma sabicu	Sabicu		X			30x25'		1	
MFT	X		Myrcianthes fragrans	Simpson Stopper	X		2"	9-10'	20'		2	25 Gallon
MFTE	X		Myrcianthes fragrans	Simpson Stopper	X				20x25'		1	
PGTE	X		Pithecolobium gualanense	Blackbead	X				20'		4	
PRT	X		Plumeria rubra	Red Plumeria		X	3"	12'	35'	30'	1	Field Grown
PRTE	X		Plumeria rubra	Red Plumeria		X			20'		1	
SGT	X		Simarouba glauca	Paradise Tree	X		2 1/2"	12'	45'		1	30 Gallon
SGTE	X		Simarouba glauca	Paradise Tree	X				45'		2	NA
SMAT	X	Relocated	Suriana maritima	Bay Cedar	X		2"	9-10'	20'		1	25 Gallon
THTE	X		Tabebuia heterophylla	Pink Tabebuia Tree		X			50'		3	
PALMS												
CARP	X		Coccothrinax argentata	Silver Palm	X			6'	15'		6	15 Gallon
CMPE	X		Caryota mitis	Fishtail Palm		X			25'		1	
CNP	X		Cocos nucifera 'Green Malayan'	Green Malayan Coconut		X		1' GW	80'		2	Field Grown
TRP	X		Thrinax radiata	Florida Thatch Palm	X			10'	20'		7	Field Grown
TMPR	X		Thrinax morrisii	Relocated Key's Thatch Palm		X		6-10'	20'		6	Field Grown
VMPE	X		Veitchia merillii	Christmas Palm		X					13	NA
WRPE	X		Washingtonia robusta	Washington Palm		X			100'		8	NA

L Key	New	Existing	Botanical Name	Common Name	Native Yes	Native No	Size	Quantity	Container
SHRUBS									
CBD	X		Cordyline 'Baby Doll'	Baby Doll Ti Plant		X	1-2'	3	3 Gallon
CC	X		Capparis cynophallophora	Jamaican Caper	X		15-18" x 10-12"	47	3 Gallon
CEI	X		Cordyline 'Electra'	Electra Ti Plant		X	2-3'	12	3 Gallon
CER	X		Codianum 'Eleanore Roosevelt'	Eleanore Roosevelt Croton	X		24" Full	16	3 Gallon
CI	X		Chrosobalanus icaco	Cocoplum	X		24"x20"	48	3 Gallon
HPC	X		Hamelia patens 'Compacta'	Dwarf Firebush	X		2' Full	35	3 Gallon
PH	X		Philodendron 'Hope' TM	Hope Philodendron		X	24"x24"	55	3 Gallon
PN	X		Psychotria nervosa	Wild Coffee	X		24"	63	3 Gallon
ST	X		Schefflera arboricola 'Trinette'	Variiegated Schefflera		X	24"x24"	49	3 Gallon
Td	X		Tripsacum dactyloides	Fakahatchee	X		3' Full	40	3 Gallon
TF	X		Tripsacum floridana	Florida Gama Grass	X		2' Full	31	3 Gallon
GROUND COVER									
AE	X		Aspidistra elatior	Cast Iron Plant		X	Full	120	1 Gallon
LEG	X		Liriope 'Evergreen Giant'	Green Liriope	X		Full	465	1 Gallon
NC	X		Nephtrolepis cordifolia	Erect Swordfern	X		Full	36	1 Gallon
SC	X		Seasonal Color	Red Pentas		X	Full	190	6" Pots
SJ	X		Stachytarpheta jamaicensis	Blue Porterweed	X		Full	100	1 Gallon

NOTES:

1. **Watering** - Plants shall be watered by hose soaking thoroughly each day for the first two weeks (14 calendar days) and every other day for the following two-week period. Water shall be clean & free of pesticides. At the end of this hose-soaking period, earth saucers shall be collapsed and mulch installed.

Revisions:

- 1.
- 2.
- 3.

As Creator of these drawings, Netzel Design Group, Inc. has the exclusive right as per the copyright laws to make copies, to display publicly, or make works derived from these drawings. These Drawings, as well as original ideas or original portions of the drawings including but not limited to details and specifications cannot be used or copied without permission from Netzel design Group, Inc.

Landscape Development Plan for:
AH MONROE COUNTY
- MARTY'S PLACE
PO BOX 4374
KEY WEST, FL. 33040

SEAL

Netzel Design Group
LANDSCAPE ARCHITECTURE
Land & Environmental Planning
PO Box 83842, South Florida, Florida 33089-6342
Broward: 954-385-7370 Miami-Dade: 305-477-6975
Scott F. Netzel
RLA # 1385

PRELIMINARY
LANDSCAPE
PLAN

SCALE 1" = 16'

DRAWN SFN

JOB KGC-14-08

DATE 09-23-14

SHEET:

L1

1 of 1

STAFF REPORT

DATE: September 16, 2014

**RE: 1521, 1523, 1525 Bertha St and 1512 Dennis St (compound)
(permit application #7064)**

FROM: Karen DeMaria, Urban Forestry Manager,
City of Key West

An application was received for Final Landscape Plan Approval with Tree removal for trees located on the above mentioned property due to the land being redevelopment.

The development includes the demolition of existing structures and the building of new structures in those same areas. Trees and shrubs not directly within the impact area will be protected from construction and demolition activities.

1. Staff Approvals: Transplantations

6 Keys Thatch Palms (tree #6, 43, 44, 48, 49, and 51)

2. Staff Approvals: 19 Palm tree removals

9 Coconut Palms (tree #4, 31, 32, 40, 50, 58, 62, 69, and 75)

10 Christmas Palms (tree #18, 19, 20, 23, 25, 27, 34, 37, 38, and 53)

3. Tree Commission: Tree removals (16 trees total)

1 Black Olive (tree #1)

1 Royal Poinciana (tree #2)

4 Gumbo Limbo (tree #3, 17, 33, and 41)

1 Shortleaf Fig (tree #15)

1 Green Buttonwood (tree #39)

1 Barbados Cherry (tree #16)

1 Frangipani (tree #47)

1 Silver Buttonwood (tree #52)

2 Pigeon Plum (tree# 71 and #80)

1 White Tabebuia (tree #77)

1 Horseflesh Mahogany (tree #81)

A. Tree #1: Black Olive (*Bucidia beceras*)



Diameter: $28 - 24 = 4''$
Location: 70%
Species: 0% (on not protected tree list)
Condition: 70% (fair)
Total Average Value = 47%
Value x Diameter = **2 replacement caliper inches**

B. Tree #2: Royal Poinciana (Delonix regia)





Diameter: 32"

Location: 50% (possible foundation issues, large roots going under building and ramp)

Species: 100% (on protected tree list)

Condition: 70% (far, lopsided canopy due to trimming form over roof)

Total Average Value = 73%

Value x Diameter = **23 replacement caliper inches**

C. Tree #3: Gumbo Limbo (*Bursera simaruba*)



Diameter: 16"
Location: 80%
Species: 100% (on protected tree list)
Condition: 60% (fair, low, codominant trunks)
Total Average Value = 80%
Value x Diameter = **12**
replacement caliper inches



D. Tree #17: Gumbo Limbo (*Bursera simaruba*)



Diameter: 6"
Location: 70%
Species: 100% (on protected tree list)
Condition: 60% (fair, canopy crowded by other trees)
Total Average Value = 76%
Value x Diameter = **4.5 replacement caliper inches**



E. Tree #33: Gumbo Limbo (*Bursera simaruba*)



Diameter: 14"

Location: 60%

Species: 100% (on protected tree list)

Condition: 60% (fair, low multi trunked)

Total Average Value = 73%

Value x Diameter = **10 replacement caliper inches**

F. Tree #41: Gumbo Limbo (*Bursera simaruba*)



Diameter: 12"

Location: 60%

Species: 100% (on protected tree list)

Condition: 70% (fair)

Total Average Value = 76%

Value x Diameter = **9 replacement caliper inches**

G. Tree #15: Shortleaf Fig (*Ficus citrifolia*)





Diameter: 46"

Location: 40% (fence/property line root issues)

Species: 100% (on protected tree list)

Condition: 50% (fair health, poor structure)

Total Average Value = 63%

Value x Diameter = **28 replacement caliper inches**



H. Tree #39: Green Buttonwood (*Conocarpus erectus*)





Diameter: 6"

Location: 70%

Species: 100% (on protected tree list)

Condition: 50% (fair, strong trunk lean, structure poor)

Total Average Value = 73%

Value x Diameter = **4 replacement caliper inches**

I. Tree #16: Barbados Cherry (*Malpighia glabra*)



Diameter: 8"

Location: 80%

Species: 50% (not on protected or not protected tree list)

Condition: 70% (fair)

Total Average Value = 66%

Value x Diameter = **5 replacement caliper inches**

J. Tree #47: Pink Frangipani (Plumeria sp.)



Diameter: 6"

Location: 80%

Species: 50% (not on protected or not protected tree list)

Condition: 70% (fair)

Total Average Value = 66%

Value x Diameter = **4 replacement caliper inches**

K. Tree #52: Silver Buttonwood (*Conocarpus erectus*)



Diameter: 3.5"

Location: 70%

Species: 100% (on protected or not protected tree list)

Condition: 60% (fair)

Total Average Value = 76%

Value x Diameter = **2.6 replacement caliper inches**

L. Tree #71: Pigeon Plum (*Coccoloba diversifolia*)



Diameter: 3"

Location: 80%

Species: 100% (on the protected tree list)

Condition: 80% (good)

Total Average Value = 87%

Value x Diameter = **2.6 replacement caliper inches**

M. Tree #80: Pigeon Plum (*Coccoloba diversifolia*)



Horseflesh
Mahogany to
be removed

Paradise tree
to remain

Diameter: 3"

Location: 80%

Species: 100% (on protected tree list)

Condition: 70% (fair)

Total Average Value = 83%

Value x Diameter = **2.5 replacement caliper inches**

N. Tree #77: White Tabebuia



Diameter: 4"

Location: 80%

Species: 50% (not on protected or not protected tree list)

Condition: 80% (good)

Total Average Value = 70%

Value x Diameter = **2.8 replacement caliper inches**

O. Tree #81: Horeseflesh Mahognay



Diameter: 5"

Location: 80%

Species: 50% (not on protected or not protected tree list)

Condition: 70% (fair)

Total Average Value = 66%

Value x Diameter = **3.3 replacement caliper inches**

Total tree removal replacement requirements (dicot trees):

115.3 caliper inches

Total tree removal replacements requirements (palm trees): 19 native palm trees plus 1 native palm tree (permit # 6300) = **20 native palms total**

4. Landscape Plan Required Replacements: The applicant, A.H. of Monroe County, Inc, is requesting a reduction in required landscaping and required tree replacements (as per Sec 110-327 (7) (b) ii).

5. No Permit Required for removal: Trees being removed that do not need a permit for removal include non-native palm trees less than 10 ft tall (Washingtonian, Triangle, Bismark, and Christmas palms), trees on the not protected tree list (Ficus benjamin tree, Areca, and Travelers Palms) and trees on the not protected tree list that are less than 24” diameter (Woman’s Tongue and Tabebuia trees).

6. Staff Comments: The landscape plan incorporates the planting of approximately 25.5 caliper inches of native trees (Gumbo Limbo, Autograph, Simpson Stopper, Plumeria, and Paradise trees), 13 native palm trees (Coccothrinax and thatch palms), and 193 native shrubs in 3-gallon containers (Jamaican caper, cocoplum, firebush, and wild coffee) onto the property. Several existing canopy trees currently growing on the property will remain.

It is recommended that the Final Landscape Plan with tree removals be approved.

PHOTOS OF THE PROPERTY:

Starting at the North corner of the compound along Dennis St.



Looking into pool area, no proposed impacts to vegetation in this area.



Looking adjacent to pool area, location of proposed new residential building. Tree # 16, #17, #18, and #19 are visible in this photo.



Looking south down Dennis St toward Venetia, adjacent to the pool area, at proposed location of new residential building. Tree #20 (Christmas Palm) and 21 (Areca Palm). Pigeon plum tree next to fence is tree #71.



Tree #69 Coconut Palm



Looking west into the property, adjacent to the pool area, at proposed location of new residential building. Tree #21 and #22 with canopy of tree # 17 and #18 in background.



Interior of property looking northeast toward Dennis St. Building to be removed and area redeveloped.



Interior of property looking southeast toward Dennis St. Royal Poinciana to remain and will be protected during demolition and development. Christmas palms in background to be removed.



Tree # 23, #24, #25, #26,
#27, #28, #29



Two Christmas palms and one gumbo limbo to remain and be protected during demolition and development.



Looking south down the Dennis St fence line-interior - at tree #72, #73, and #74.



Standing on Dennis St looking west at property and at tree #70 and #76.



Standing on Dennis St looking southwest toward Venetia, at property. Most of the trees along fence line will not be impacted from demolition and development. Proper tree protection measures will be required. Tree # 77, #77A, and #77B will be removed due to creation of a sidewalk.



Above photo, standing on Venetia looking east toward Dennis St and corner of property.



Standing on Venetia looking north down Dennis St property line area. None of these trees are to be impacted by the demolition or development including the large yellow tabebuia, white stopper shrubs, and Alexander palms.



Standing on Venetia looking north into the property. All of these buildings are to be demolished and redeveloped. Trees in this photo include #40, #41, #43, #44, #46, #47, and #45.



Standing on Venetia looking north into the property. All of these buildings are to be demolished and redeveloped. Trees in this photo include #33, #34, #35, #36, #37, #38, and #39.



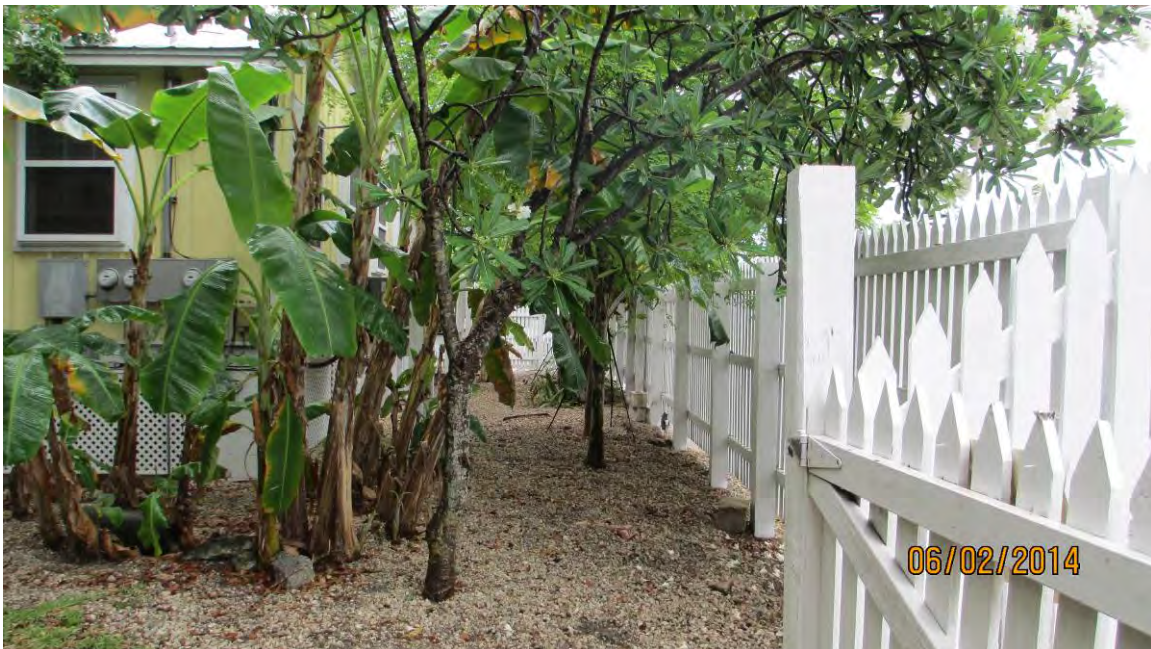
Tree #50 to be removed.



Standing on Bertha St looking southeast toward Venetia. Tree #79 is seen in this photo.



Standing on Bertha St looking northeast at corner of property. Building to be demolished and redeveloped. Tree # 57, #24, #24, #15, #8, #9, #56, 7, and #6 are in this photo.



Looking down Bertha St property line area, interior side of fence.



Interior of property off Bertha St looking at tree # 3, #4, and #58.



Two tree trunks, one rootball,
tree #4. Tree #3 in background.
Trees are to be removed.



Interior of property off Bertha St tree #58 to be removed.



Interior of property, looking toward Bertha St at building to be demolished and vegetation to be removed. Tree #6, #7, #56, #8, and #9.



Close up of tree #8, Ficus benjamina.



Interior of property off Bertha St looking north at area to be impacted by demolition and redevelopment. Tree #10 and #11.

TREE ID	Species	DBH	City KW Tree Value	Required Replacement	Palm Height	Relocate or Remove	Sec 110 Status
1	Black Olive	28" 28-24= 4"	47%	2"		Remove	regulated= TC
2	Poinciana	32"	73%	23"		Remove	regulated = TC
3	Gumbo Limbo	16"	80%	12"		Remove	regulated = TC
4	Coconut Palm (double trunks)				<10 ft	Remove	regulated = SA
6	Keys Thatch				<10 ft	Relocate	regulated = SA
7	Washingtonian Palm				< 10 ft	Remove	NOT regulated
8	Ficus Benjamin	5"	NA	NA		Remove	NOT regulated
9	Christmas Tree Palm				<10 ft	Remove	NOT regulated
10	Woman's Tongue	10"	NA	NA		Remove	NOT regulated
11	Woman's Tongue	9"	NA	NA		Remove	NOT regulated
12	Christmas Tree Palm				<10 ft	Remove	NOT regulated
14	Christmas Tree Palm (double trunk)				<10 ft	Remove	NOT regulated
15	Ficus Citrofolia	46"	63%	28"		Remove	regulated = TC
16	Barbados Cherry	8"	66%	5"		Remove	regulated = TC
17	Gumbo Limbo	6"	76%	4.5"		Remove	regulated = TC
18	Christmas Tree Palm				>10 ft	Remove	regulated = SA
19	Christmas Tree Palm				>10 ft	Remove	regulated = SA
20	Christmas Tree Palm				>10 ft	Remove	regulated = SA
21	Areca Palm				NA	Remove	NOT regulated
22	Bismark Palm				< 10 ft	Remove	NOT regulated
23	Christmas Tree Palm				>10 ft	Remove	regulated = SA
25	Christmas Tree Palm (double trunked)				>10 ft	Remove	regulated = SA
26	Areca Palm				NA	Remove	NOT regulated
27	Christmas Tree Palm (triple trunked)				>10 ft	Remove	regulated = SA
30	Triangle Palm				< 10 ft	Remove	NOT regulated
31	Coconut Palm				>10 ft	Remove	regulated = SA
32	Coconut Palm				>10 ft	Remove	regulated = SA
33	Gumbo Limbo	14"	73%	10"		Remove	regulated = TC

TREE ID	Species	DBH	City KW Tree Value	Required Replacement	Palm Height	Relocate or Remove	Sec 110 Status
34	Christmas Tree Palm				>10 ft	Remove	regulated = SA
35	Tabebuia	11"	NA	NA		Remove	NOT regulated
37	Christmas Tree Palm				>10 ft	Remove	regulated = SA
38	Christmas Tree Palm (double trunked)				>10 ft	Remove	regulated = SA
39	Green Buttonwood	6"	73%	4"		Remove	regulated = TC
40	Coconut Palm				>10 ft	Remove	regulated = SA
41	Gumbo Limbo	12"	76%	9"		Remove	regulated = TC
42	Travelers Palm				NA	Remove	NOT regulated
43	Keys Thatch				<10 ft	Relocate	regulated = SA
44	Keys Thatch				<10 ft	Relocate	regulated = SA
45	Travelers Palm				NA	Remove	NOT regulated
46	Areca Palm				NA	Remove	NOT regulated
47	Frangipani	6"	66%	4"		Remove	regulated = TC
48	Keys Thatch				<10 ft	Relocate	regulated = SA
49	Keys Thatch				<10 ft	Relocate	regulated = SA
50	Coconut Palm				>10 ft	Remove	regulated = SA
51	Keys Thatch				<10 ft	Relocate	regulated = SA
52	Silver Buttonwood	9"	76%	2.6"		Remove	regulated = TC
53	Christmas Tree Palm				>10 ft	Remove	regulated = SA
54	Bay Cedar	NA	NA	NA		Remove	NOT regulated-shrub
55	Non native Thatch Palm				<10 ft	Remove	NOT regulated
56	Christmas Tree Palm				<10 ft	Remove	NOT regulated
57	Christmas Tree Palm (triple trunked)				<10 ft	Remove	NOT regulated
58	Coconut Palm				<10 ft	Remove	regulated = SA
59	Christmas Tree Palm				<10 ft	Remove	NOT regulated
60	Christmas Tree Palm				<10 ft	Remove	Not regulated
61	Christmas Tree Palm				<10 ft	Remove	Not regulated
62	Coconut Palm				<10 ft	Remove	regulated = SA
63	Christmas Tree Palm				<10 ft	Remove	Not regulated
64	Schefflera/Umbrella tree	NA	NA	NA		Remove	NOT regulated
65	Christmas Tree Palm				<10 ft	Remove	NOT regulated

TREE ID	Species	DBH	City KW Tree Value	Required Replacement	Palm Height	Relocate or Remove	Sec 110 Status
66	Christmas Tree Palm				<10 ft	Remove	NOT regulated
67	Christmas Tree Palm				<10 ft	Remove	NOT regulated
68	Woman's Tongue	2"	NA	NA		Remove	NOT regulated
69	Coconut Palm				<10 ft	Remove	regulated = SA
70	Christmas Tree Palm				<10 ft	Remove	NOT Regulated
71	Pigeon Plum	3"	87%	2.6"		Remove	regulated = TC
72	Locust Berry	NA	NA	shrub		Remove	NOT Regulated
73	Red Stopper	NA	NA	shrub		Remove	NOT Regulated
74	Bulnesia	3"				Remove	NOT Regulated
75	Coconut Palm				<10 ft	Remove	regulated = SA
76	Christmas Tree Palm				<10 ft	Remove	NOT Regulated
77	White Tabebuia	4"	70%	2.8"		Remove	regulated = TC
77A	Simpson's Stopper	1"				Remove	NOT Regulated
77B	Simpson's Stopper	1.5"				Remove	NOT Regulated
78	Christmas Tree Palm				<10 ft	Remove	NOT Regulated
79	Frangipani	5"				REMAIN	
80	Pigeon Plum	3"	83%	2.5"		Remove	regulated = TC
81	Horseflesh Mahogany	5"	66%	3.3"		Remove	regulated = TC
TOTALS				115.3"	19 palms	Remove	
					6 Thatch Palms	Relocate	

05/05/14

Mr. Brendon Cunningham
Senior Planner
City of Key West
3140 Flagler Avenue
Key West, FL 33040

TREPANIER



& ASSOCIATES INC

LAND USE PLANNING
DEVELOPMENT CONSULTANTS

Dear Mr. Cunningham,

This is a request for modification to the standards of this ordinance is hereby filed with the city planning office and shall be considered by the planning board after reviewing recommendations of the city planner or designated staff. The planning board shall render the final action.

This request is to waive the following landscape requirements of Sec. 108 so as to:

1. Protect and preserve the integrity of this vital community service.
2. The waiver will not have a significant adverse impact on the public interest, or on adjacent property.
3. The waiver or modification is not discriminatory, considering similar situations in the general area.
4. The development will provide an alternative landscape solution which will achieve the purposes of the requirement through clearly superior design.
5. Strict application of the requirement will effectively deprive the owner and the community of reasonable use of the land for the intended purpose due to its unusual size, shape, and location.
6. The effect upon the owner is not outweighed by a valid public purpose in imposing the requirement in this case.
7. Strict application of the requirement would be technically impractical.

Specific Waivers/ Modifications:

Sec. 108-413. Requirements along street frontage.

To permit the street frontage landscaping as proposed on the attached plans.

Sec. 108-414. Requirements for interior areas.

To permit the interior parking lot landscaping as proposed on the attached plans.

Sec. 108-415. Perimeter landscape requirements.

To permit the perimeter landscaping as proposed on the attached plans.

Sec. 108-416. Other landscape requirements for nonvehicular use areas.

To permit the nonvehicular use area landscaping as proposed on the attached plans.

Sec. 108-450. Landscape screening.

To permit the landscape screening as proposed on the attached plans.

Sincerely,

Patrick Wright, Planner

Application



7064

Tree Permit Application

Date: 8/20/14

Please Clearly Print All Information unless indicated otherwise.

Tree Address 1521, 1523, 1525 Bertha St. + 1512 Dennis St. (ramp road)
Cross/Corner Street Veneta St.
List Tree Name(s) and Quantity SEE ATTACHED
Species Type(s) check all that apply Palm Flowering Fruit Shade Unsure
Reason(s) for Application:
 REMOVE Tree Health Safety Other/Explain below
 TRANSPLANT New Location Same Property Other/Explain below
 HEAVY MAINTENANCE Branch Removal Crown Cleaning/Thinning Crown Reduction
Other/Explain NEED TO REMOVE/RELOCATE FOR NEW DEVELOPMENT
RELOCATE TRIANGLE/CHRISTMAS AND BISMARCK
Reason for Request NEW BUILDINGS

Property Owner Name A H. of Monroe County, Inc.
Property Owner eMail Address scott.p@aidshelp.cc
Property Owner Mailing Address P.O. Box 4374
Property Owner Mailing City Key West **State** FL **Zip** 33040
Property Owner Phone Number (305) 296-6196
Property Owner Signature [Signature]

Representative Name Rick Mitelli
Representative eMail Address rmitelli@meridianengineeringflkeys.com
Representative Mailing Address 201 FRONT ST STE 209
Representative Mailing City KEY WEST **State** FL **Zip** 33040
Representative Phone Number (305) 293-3263

NOTE: A Tree Representation Authorization form must accompany this application if someone other than the owner will be representing the owner at a Tree Commission meeting or picking up an issued Tree Permit.

Tree Representation Authorization form attached

<<<<< Sketch location of tree in this area including cross/corner Street >>>>>

Please identify tree(s) with colored tape

SEE ATTACHED PLANS

Transplant 4 Thatch palms
Remove 20 non-native palms
 Remove: 1-black olive 1-Royal Poinciana
 4-Gumbolimbos 1-Shortleaf Fig
 1- Barbados Cherry 1- Green Buttawood
 1- Frangipani 1-Silver Buttawood

If this process requires blocking of a City right-of-way, a separate ROW Permit is required. Please contact 305-809-3740.



Tree Representation Authorization

Date: 8/20/14

Attendance at the Tree Commission meeting on the date when your request will be discussed is necessary in order to expedite the resolution of your application. This Tree Representation Authorization form must accompany the application if the property owner is unable to attend or will have someone else pick up the Tree Permit once issued.

Please Clearly Print All Information unless indicated otherwise.

Tree Address 1521, 1523, 1525 Bertha St. & 1512 Dennis St. (compound)

Property Owner Name A.H. of Monroe County, Inc.
Property Owner eMail Address scott.p@aidshelp.cc
Property Owner Mailing Address P.O. Box 4374
Property Owner Mailing City Key West State FL Zip 33040
Property Owner Phone Number (305) 296-6196
Property Owner Signature [Signature]

Representative Name Rick Milelli
Representative eMail Address rmilelli@meridianengineeringflkeys.com
Representative Mailing Address 201 Front St ste 209
Representative Mailing City Key West State FL Zip 33040
Representative Phone Number (305) 293-3263

I SCOTT BRIDGEN, hereby authorize the above listed agent(s) to represent me in the matter of obtaining a Tree Permit from the City of Key West for my property at the tree address above listed. You may contact me at the telephone listed above is there is any questions or need access to my property.

Property Owner Signature [Signature]

The forgoing instrument was acknowledged before me on this 6th day May 2014.

By (Print name of Affiant) Scott Bridgen who is personally known to me or has produced p known as identification and who did take an oath.

NOTARY PUBLIC
Sign Name: Rosalee K Hayes
Print Name: Rosalee K Hayes
My Commission Expires: Dec 01 2017

Notary Public - State of Florida (seal)





Scott P. Russell, CFA
Property Appraiser
Monroe County, Florida

Key West (305) 292-3420
Marathon (305) 289-2550
Plantation Key (305) 852-7130

Property Record Card -
Maps are now launching the new map application version.

Alternate Key: 1063835 Parcel ID: 00063400-000000

Ownership Details

Mailing Address:
A.H. OF MONROE COUNTY INC
PO BOX 4374
KEY WEST, FL 33041-4374

Property Details

PC Code: 74 - HOMES FOR THE AGED
Millage Group: 10KW
Affordable Housing: No
Section-Township-Range: 05-68-25
Property Location: 1521 BERTHA ST KEY WEST
1523 BERTHA ST KEY WEST
1525 BERTHA ST KEY WEST
1512 DENNIS ST KEY WEST
Legal Description: KW DIAG PB1-13 PT LOT 2 & ALL LOTS 3 & 4 & 11 & PT LOT 12 & ALL LOT 14 SQR 6 TR 30 G26-184 G30-254/255
G33-408/409 OR629-174 OR654-569 OR1138-1952/1953 OR1198-1899/1900(LG) OR1235-1857/61(RES NO 92-493)
(LG)

Click Map Image to open interactive viewer



Exemptions

Exemption	Amount
12 - NON-PROFIT	1,087,147.00

Land Details

Land Use Code	Frontage	Depth	Land Area
100D - COMMERCIAL DRY	0	0	26,050.00 SF

Internal Revenue Service
District Director

Department of the Treasury

Date: AUG 14 1986

▷ AIDS HELP, INC.
715 Windsor Lane
Key West, FL 33040

Employer Identification Number:
59-2678740
Accounting Period Ending:
December 31
Foundation Status Classification:
170(b)(1)(A)(vi) & 509(a)(1)
Advance Ruling Period ~~1986~~ Begins Marc
1986 & Ends December 31, 1990
Person to Contact:
Alicia Foster/ss
Contact Telephone Number:
(404) 331-4516
File Folder Number:
580070799

Dear Applicant:

Based on information supplied, and assuming your operations will be as stated in your application for recognition of exemption, we have determined you are exempt from Federal income tax under section 501(c)(3) of the Internal Revenue Code.

Because you are a newly created organization, we are not now making a final determination of your foundation status under section 509(a) of the Code. However, we have determined that you can reasonably be expected to be a publicly supported organization described in section 170(b)(1)(A)(vi) & 509(a)(1).

Accordingly, you will be treated as a publicly supported organization, and not as a private foundation, during an advance ruling period. This advance ruling period begins on the date of your inception and ends on the date shown above.

Within 90 days after the end of your advance ruling period, you must submit to us information needed to determine whether you have met the requirements of the applicable support test during the advance ruling period. If you establish that you have been a publicly supported organization, you will be classified as a section 509(a)(1) or 509(a)(2) organization as long as you continue to meet the requirements of the applicable support test. If you do not meet the public support requirements during the advance ruling period, you will be classified as a private foundation for future periods. Also, if you are classified as a private foundation, you will be treated as a private foundation from the date of your inception for purposes of sections 507(d) and 4940.

Grantors and donors may rely on the determination that you are not a private foundation until 90 days after the end of your advance ruling period. If you submit the required information within the 90 days, grantors and donors may continue to rely on the advance determination until the Service makes a final determination of your foundation status. However, if notice that you will no longer be treated as a section 509(a)(1) organization is published in the Internal Revenue Bulletin, grantors and donors may not rely on this determination after the date of such publication. Also, a grantor or donor may not rely on this determination if he or she was in part responsible for, or was aware of, the act or failure to act that resulted in your loss of section 509(a)(1) status, or acquired knowledge that the Internal Revenue Service had given notice that you would be removed from classification as a section 509(a)(1) organization.

(over)

If your sources of support, or your purposes, character, or method of operation change, please let us know so we can consider the effect of the change on your exempt status and foundation status. Also, you should inform us of all changes in your name or address.

As of January 1, 1984, you are liable for taxes under the Federal Insurance Contributions Act (social security taxes) on remuneration of \$100 or more you pay to each of your employees during a calendar year. You are not liable for the tax imposed under the Federal Unemployment Tax Act (FUTA).

Organizations that are not private foundations are not subject to the excise taxes under Chapter 42 of the Code. However, you are not automatically exempt from other Federal excise taxes. If you have any questions about excise, employment, or other Federal taxes, please let us know.

Donors may deduct contributions to you as provided in section 170 of the Code. Bequests, legacies, devises, transfers, or gifts to you or for your use are deductible for Federal estate and gift tax purposes if they meet the applicable provisions of sections 2055, 2106, and 2522 of the Code.

You are required to file Form 990, Return of Organization Exempt from Income Tax, only if your gross receipts each year are normally more than \$25,000. If a return is required, it must be filed by the 15th day of the fifth month after the end of your annual accounting period. The law imposes a penalty of \$10 a day, up to a maximum of \$5,000, when a return is filed late, unless there is reasonable cause for the delay.

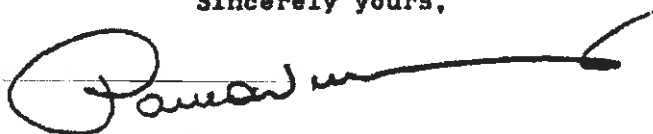
You are not required to file Federal income tax returns unless you are subject to the tax on unrelated business income under section 511 of the Code. If you are subject to this tax, you must file an income tax return on Form 990-E, Exempt Organization Business Income Tax Return. In this letter, we are not determining whether any of your present or proposed activities are unrelated trade or business as defined in section 513 of the Code.

You need an employer identification number even if you have no employees. If an employer identification number was not entered on your application, a number will be assigned to you and you will be advised of it. Please use that number on all returns you file and in all correspondence with the Internal Revenue Service.

Because this letter could help resolve any questions about your exempt status and foundation status, you should keep it in your permanent records.

If you have any questions, please contact the person whose name and telephone number are shown in the heading of this letter.

Sincerely yours,



District Director

INTERNAL REVENUE SERVICE
DISTRICT DIRECTOR
C - 1130
ATLANTA, GA 30301

DEPARTMENT OF THE TREASURY

Date: MAY 06 1991

AIDS HELP INC
PO BOX 4874
KEY WEST, FL 33041

Employer Identification Number:
59-2678740

Contact Person:
TERRI BRADLEY

Contact Telephone Number:
(404) 331-0168

Our Letter Dated:
August 14, 1986

Addendum Applies:
No

--Dear Applicant:

This modifies our letter of the above date in which we stated that you would be treated as an organization which is not a private foundation until the expiration of your advance ruling period.

Your exempt status under section 501(a) of the Internal Revenue Code as an organization described in section 501(c)(3) is still in effect. Based on the information you submitted, we have determined that you are not a private foundation within the meaning of section 509(a) of the code because you are an organization of the type described in section 509(a)(1) and 170(b)(1)(A)(vi).

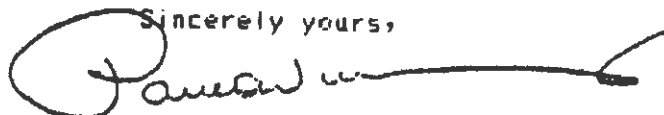
Grantors and contributors may rely on this determination unless the Internal Revenue Service publishes notice to the contrary. However, if you lose your section 509(a)(1) status, a grantor or contributor may not rely on this determination if he or she was in part responsible for, or was aware of, the act or failure to act, or the substantial or material change on the part of the organization that resulted in your loss of such status, or if he or she acquired knowledge that the Internal Revenue Service had given notice that you would no longer be classified as a section 509(a)(1) organization.

If we have indicated in the heading of this letter that an addendum applies, the addendum enclosed is an integral part of this letter.

Because this letter could help resolve any questions about your private foundation status, please keep it in your permanent records.

If you have any questions, please contact the person whose name and telephone number are shown above.

Sincerely yours,



Paul Williams
District Director

OGDEN UT 84201-0046

In reply refer to: 0423373795
Apr. 23, 2009 LTR 252C E0
59-2678740 000000 00 000
00004022
BODC: TE

AH OF MONROE COUNTY INC
PO BOX 4374
KEY WEST FL 33041-4374

.8900

Taxpayer Identification Number: 59-2678740

Dear Taxpayer:

Thank you for the inquiry dated Apr. 01, 2009.

We have changed the name on your account as requested. The number shown above is valid for use on all tax documents.

If you need forms, schedules, or publications, you may get them by visiting the IRS website at www.irs.gov or by calling toll-free at 1-800-TAX-FORM (1-800-829-3676).

If you have any questions, please call us toll free at 1-877-829-5500.

If you prefer, you may write to us at the address shown at the top of the first page of this letter.

Whenever you write, please include this letter and, in the spaces below, give us your telephone number with the hours we can reach you. Also, you may want to keep a copy of this letter for your records.

Telephone Number () _____ Hours _____

Sincerely yours,



Kim L. Tolsma
Dept. Manager, Code & Edit/Entity 3

Enclosure(s):
Copy of this letter