

STAFF REPORT

DATE: May 2, 2022

RE: 522 Elizabeth Street (permit application # T2022-0124)

FROM: Karen DeMaria, City of Key West Urban Forestry Manager

An application was received requesting the removal of (1) Spanish Lime and (1) Royal Poinciana tree. A site inspection was done and documented the following:

Tree Species: Spanish Lime (*Melicocccis bijugatus*)



Photo showing whole tree and its location.



Photo showing base and trunk of tree, view 1.



Photo showing location of base of tree and tree trunk in relation to structure, view 1.



Photo showing location of tree canopy relation to structure, view 1.



Photo showing location of tree canopy in relation to structure, view 2.



Damage caused
by tree.

04/27/2022

Photo showing location of tree canopy in relation to structures, view 3.



Photo of base of tree area showing old, decay trunk stump, view 1.



Photo of tree trunks.

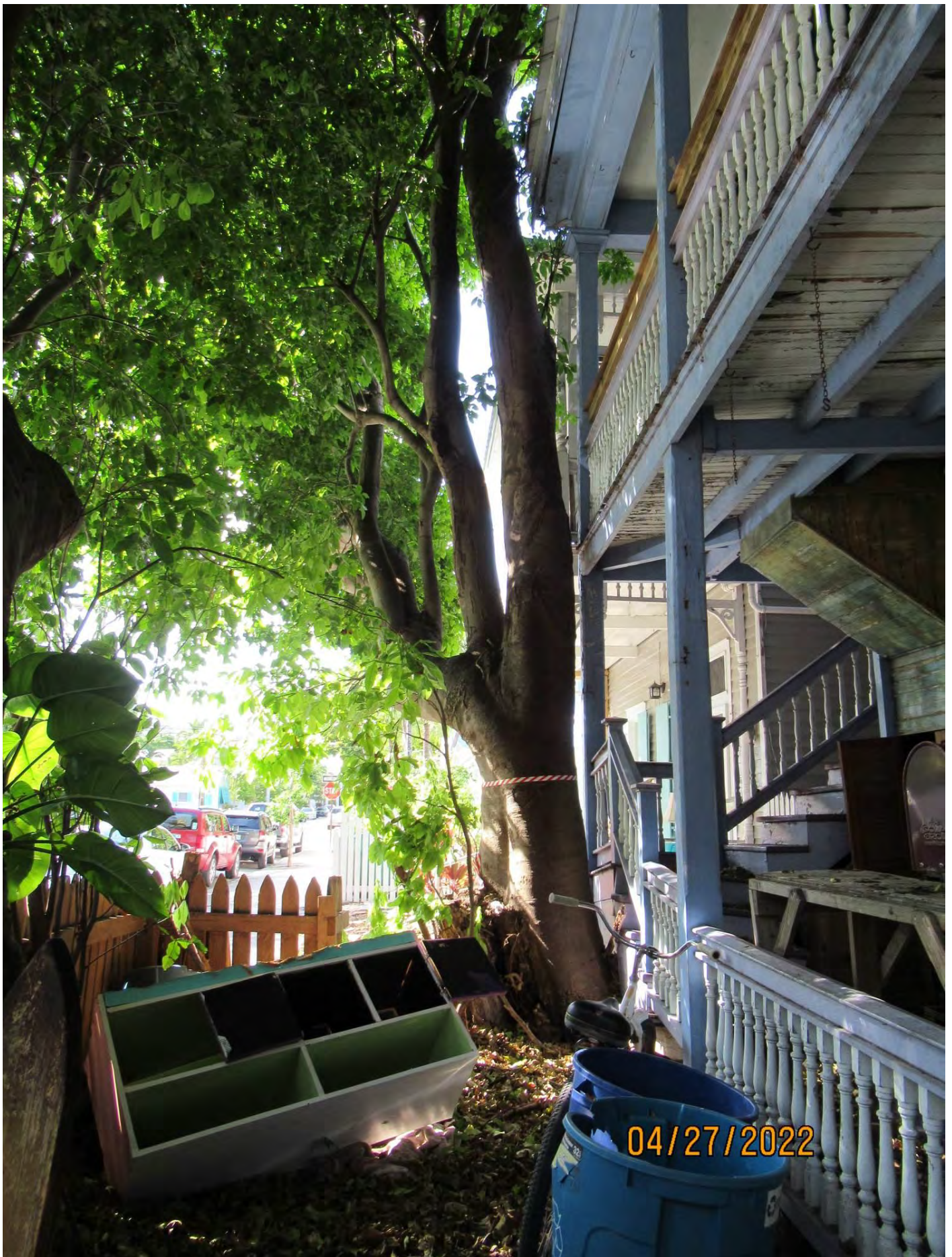


Photo showing base and trunk of tree, view 2.

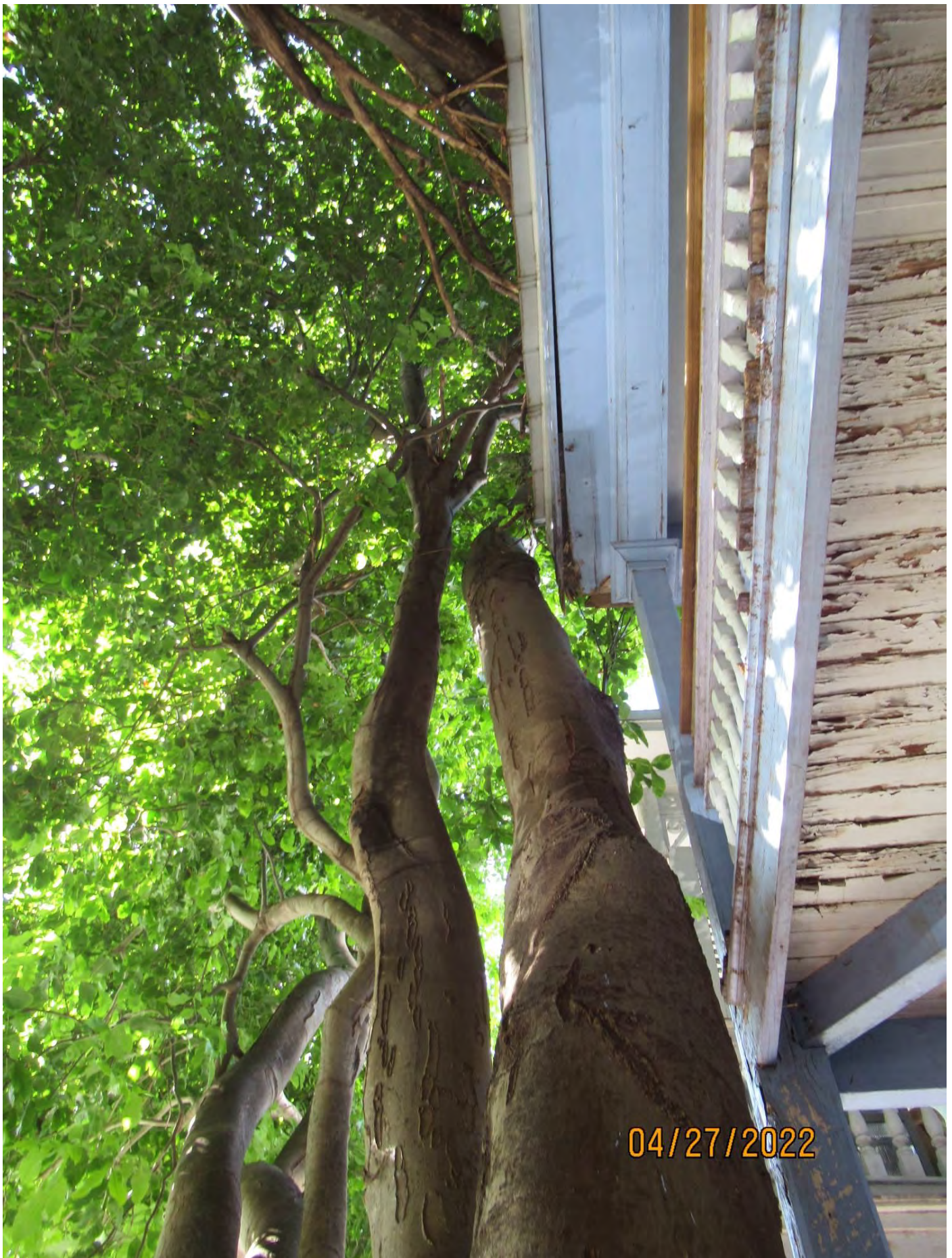


Photo showing location of tree canopy in relation to structure, view 4.



Photo showing main trunk and crotch area.



Photo showing location of base of tree and tree trunk in relation to structure, view 2.



Close up photo
of base of tree
and structure
impacts.



Photo of base
of tree and
old trunk
stump, view
2.



Photo of tree canopy.

Diameter: 27.7"

Location: 40% (tree impacting structure at base and at roof eve, canopy impacts from adjacent large Spanish Lime tree.)

Species: 100% (on protected tree list)

Condition: 50% (overall condition is fair to poor, decay in canopy due to old branch tears, large trunk stump decay at base area.)

Total Average Value = 63%

Value x Diameter = 17.4 replacement caliper inches

Tree Species: Royal Poinciana (Delonix regia)



Photo showing location of tree in backyard.



Photo showing location of trunk and base of tree in relation to structure, view 1.



Photo of base of tree, view 1.



Photo of tree trunk, view 1.



Photo of tree trunk, view 2.



Photo of
base of tree,
view 2.



Photo of
base of tree
showing
location in
relation to
structure.



Two
photos of
tree
canopy.





Photo of tree canopy.

Diameter: 21.6"

Location: 70% (in back yard, base of tree approximately 5 ft from structure on piers)

Species: 100% (on protected tree list)

Condition: 70% (overall condition is fair to good, extended trunk with high branches over structure)

Total Average Value = 80%

Value x Diameter = 17.2 replacement caliper inches

Total required replacement if both trees approved for removal: 34.6 caliper inches.