

THE BASCILICA
SCHOOL OF SAINT
MARY STAR OF
THE SEA

700 TRUMAN AVE.
KEY WEST, FLORIDA 33040

SEAL

NOT FOR CONSTRUCTION

THESE DRAWINGS
MAY NOT BE
REPRODUCED
WITHOUT WRITTEN
AUTHORIZATION BY
WILLIAM P. HORN

DATE
07-10-2022 DRC SUBMISSION
10-04-2022 PLANNING SUBMISSION
10-14-2022 HARC SUBMISSION

REVISIONS
10-24-2022 Revision 1

DRAWN BY
JFS

PROJECT NUMBER
2120

PARKING PLAN AND REGULATIONS

-START TIMES-

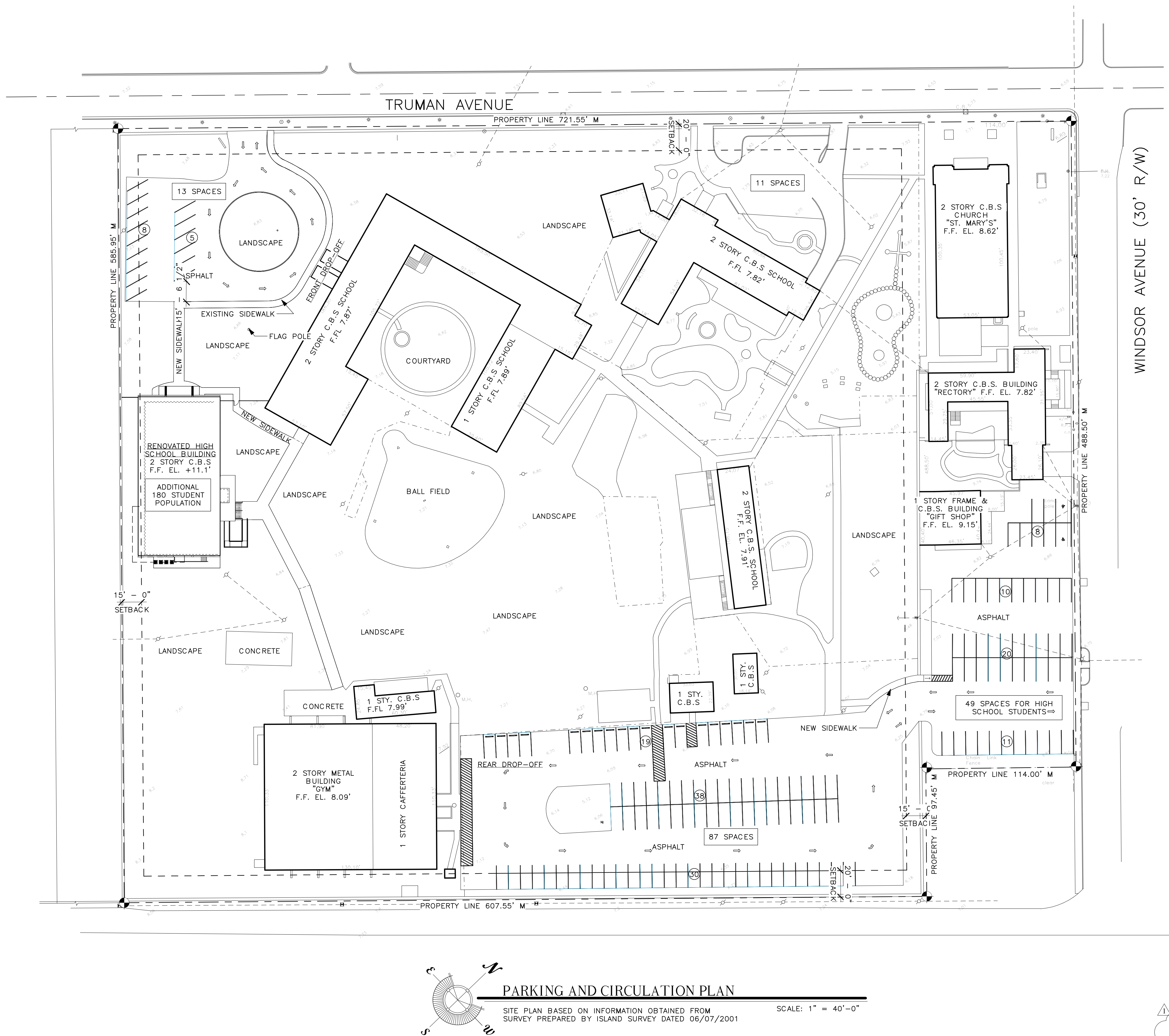
- STAGGERED START TIMES
1. HIGH SCHOOL START TIME 7:30AM
2. PRESCHOOL TO 8TH GRADE 8:00 AM
STAGGERED DISMISSAL TIMES
1. HIGH SCHOOL DISMISSAL 2:20PM
2. PRESCHOOL TO 8TH GRADE 2:50PM

-FRONT DROP OFF-

- FRONT ARRIVAL
1. NO PARKING
2. TRAFFIC CONTINUOUS MOTION
3. KINDEGARTEN THROUGH 5TH GRADE = 219 STUDENTS
FRONT DISMISSAL
1. NO PARKING -STUDENTS ARE BROUGHT TO CAR BY STAFF
2. TRAFFIC IS CONTINUOUS MOTION
3. 3RD GRADE THROUGH 9TH GRADE =181 STUDENTS

-REAR DROP OFF-

- REAR ARRIVAL
1. DROP OFF FOR PRE-SCHOOL PARENTS PARK
2. DROP OFF FOR PRE-KINDERGARTEN PARENTS WILL PARK
3. DROP OFF FOR 6TH GRADE THROUGH 9TH GRADE NO PARKING
4. TOTAL STUDENT DROP OFF IS 174 STUDENTS
REAR DISMISSAL
1. NO PARKING -STUDENTS ARE BROUGHT TO CAR BY STAFF
2. TRAFFIC IS CONTINUOUS
3. PRE-SCHOOL, PRE-KINDERGARTEN, AND KINDERGARTEN THROUGH 2ND GRADE =212 STUDENTS



THE BASCILICA SCHOOL OF SAINT MARY STAR OF THE SEA

700 TRUMAN AVE.
KEY WEST, FLORIDA 33040

