



Kelly Tractor Co.  
Serving the Industry Since 1933  
ktccat@kellytractor.com  
www.kellytractor.com

November 1, 2022  
City of Key West  
Attn: Richard Sarver

rev1101

**REF: Florida Sheriff's Association Contract quote.**  
**Term: October 1, 2020 – September 30, 2023**  
**Contract: FSA20-EQU18.0, Heavy Equipment**  
**TOOL CARRIER: Telescopic Tool Carrier**  
**Item: 400, Caterpillar TH255C**

**BASE MODEL**

CAT TH357D TELEHANDLER \$127,736 A

**DOWNGRADE MODEL OPTION**

TH255C DOWNGRADE TO BASE TH255C \$-36,948 B

**NON-SPECIFIED OPTIONS**

561-7233	TH255C TELEHANDLER CFG1	BASE	
566-2930	PREPARATION PACK, AM-N	N/C	
471-9829	FAN, ENGINE, VARIABLE	N/C	
509-4919	RAIN CAP, ENGINE BREATHER	N/C	
506-9925	LINES, REAR AUX, NONE	N/C	
446-9669	ELECTRICAL CONFIG, ADSD-N PLUS	N/C	
472-1142	LIGHTS, ROADING, RH DIP	\$1,250	
566-6680	CAB, ENCLOSED WITH HEAT + AC	\$10,040	
509-2139	SEAT, VINYL	N/C	
527-8592	HEADLINER, STANDARD	N/C	
565-7819	TIRES, 12 X 16.5, PNEUMATIC	N/C	
508-8764	COUNTERWEIGHT	N/C	
566-3081	COUPLER, MANUAL, UNIVERSAL	N/C	
508-8783	HITCH, NONE	N/C	
317-3317	FENDER, CAB, SINGLE	N/C	
506-9926	MIRROR, EXTERNAL	N/C	
446-5255	LOADCHART, UNI CPLR, USA	N/C	
508-6207	INSTRUCTIONS, ANSI	N/C	
471-6261	MANUAL, OPER. MAINT. ENGLISH	N/C	
472-1130	WORKLIGHTS, CAB MOUNTED	\$1,045	
527-8700	WASHER/WIPER, ROOF AND REAR	\$685	
508-8780	BATTERY, DISCONNECT SWITCH	\$379	
478-0225	WINDOW, REAR,EXTL RELEASE, USA	\$138	
479-6044	LOCKS, SET OF FOUR	\$173	
331-3252	CARRIAGE, STANDARD 50"	\$2,035	
323-5738	QTY 2 FORK, PALLET 2" X 4" X 48"	\$1,472	
	NON-SPECIFIED OPTIONS LIST	\$17,217	
	14% CONTRACT DISCOUNT	\$-2,410	
	NON-SPECIFIED OPTIONS TOTAL	\$14,807	C

**CONTRACT TOTAL \$105,595 A+B+C**

**QUOTE GRAND TOTAL \$105,595**

FOB: City of Key West

Thank you for consideration of our product. Quote is valid for thirty days.

Greg Bennett

Governmental Sales

Office 305-592-5360

Cell 786-229-7037

Fax 305-477-2024

[greg\\_bennett@kellytractor.com](mailto:greg_bennett@kellytractor.com)

[www.kellytractor.com/Governmental](http://www.kellytractor.com/Governmental)

**Miami**  
8255 NW 58 St  
Miami, FL 33166  
(305) 562-5360  
FAX (305) 477-2024

**Davis**  
2801 Reese Rd  
Davis, FL 33314  
(954) 581-8181  
FAX (954) 581-6464

**West Palm Beach**  
5460 Oksechobee Blvd  
West Palm Beach, FL 33417  
(561) 683-1231  
FAX (561) 683-4591

**Clewiston**  
801 E Sugarland Hwy  
Clewiston, FL 33440  
(863) 983-8177  
FAX (863) 902-1000

**Naples**  
3636 Prospect Ave  
Naples FL 34104  
(239) 403-3636  
FAX (239) 403-7510

**Ft Myers**  
9651 Kelly Tractor Dr  
Ft Myers, FL 33905  
(239) 693-9233  
FAX (239) 693-8876

**Orlando (Cranes Only)**  
17300 E Colonial Dr  
Orlando, FL 32820  
(407) 589-8055  
FAX (407) 589-7701

**Bid Award****Contract:** FSA20-EQU18.0, Heavy Equipment**Group:** TOOL CARRIER: Telescopic Tool Carrier**Item:** 400, Caterpillar, TH357D, TH357D

Zone	Rank	Vendor	Price	Percent:	Build File	Options File
Western	Primary	Ring Power Corporation	\$129,626.00	0.00%	Build	Options
Northern	Primary	Ring Power Corporation	\$129,626.00	0.00%	Build	Options
Central	Primary	Ring Power Corporation	\$129,626.00	0.00%	Build	Options
Southern	Primary	Kelly Tractor Co	\$127,736.00	0.00%	Build	Options

FSA20-EQU18.0, Heavy Equipment  
 Group: TOOL CARRIER: Telescopic Tool Carrier  
 Item: 400, Caterpillar, TH357

KELLY TRACTOR CO



Item Number	Code	Description	Price - Southern Zone
<b>DOWNGRADE MODEL OPTIONS</b>			
400	TH255	MODEL DOWNGRADE TO BASE TH255 TELEHANDLER W/FREIGHT & PREP ONLY	(\$36,948)
400	TH3510	MODEL DOWNGRADE TO BASE TH3510 TELEHANDLER W/FREIGHT & PREP ONLY	(\$6,975)
<b>UPGRADE MODEL OPTIONS</b>			
400	TH408	MODEL UPGRADE TO BASE TH408 TELEHANDLER W/FREIGHT & PREP ONLY	(\$14,569)
400	TL642	MODEL UPGRADE TO BASE TL642 TELEHANDLER W/FREIGHT & PREP ONLY	\$9,802
400	TL943	MODEL UPGRADE TO BASE TL943 TELEHANDLER W/FREIGHT & PREP ONLY	\$30,715
400	TL1055	MODEL UPGRADE TO BASE TL1055 TELEHANDLER W/FREIGHT & PREP ONLY	\$78,717
400	TL1255	MODEL UPGRADE TO BASE TL1255 TELEHANDLER W/FREIGHT & PREP ONLY	\$97,714
400	14% DISCOUNT	14% DISCOUNT OFF LIST PRICE ON NON-SPECIFIED OPTIONS ON CAT TH255 - TL1255 TELEHANDLERS. 12% DISCOUNT ON CAT WORKTOOLS	
<b>TH357 BASE OPTIONS</b>			
400	595-9113	ENGINE 100KW, HRC, TLU (UPGRADE)	\$8,763
400	558-7153	PRECLEANER, ENGINE BREATHER	\$233
400	596-8237	RIDE CONTROL, NO LMIS	\$4,083
400	495-7652	LINES,FRONT HYD, DBL, HYD CPLR	\$582
400	506-3031	COUPLER, HYDRAULIC, IT	\$2,924
400	506-3318	LINES, REAR AUX, SGL, 2 WAY	\$1,277
400	506-3319	LINES, REAR AUX, DBL, 2 WAY	\$1,751
400	499-0259	BATTERY, DUAL	\$726
400	515-0963	LIGHTS, ROADING, AG, RH DIP	\$1,484
400	515-1886	WORKLIGHTS, LED, AC	\$889
400	476-8930	SEAT, FABRIC, PREMIUM	\$663
400	503-1690	SEAT, FABRIC, PREMIUM PLUS	\$1,575
400	229-0583	BELT, SEAT, 3" RETRACTABLE	\$157
400	492-4839	FNR,JOYSTICK + STEERING COLUMN	\$280
400	546-5767	MONITOR, ADVANCED DISPLAY	\$2,599
400	512-4769	TIRES, 400/80-24, MX, POWER CL	\$1,927
400	512-4767	TIRES, 500/70 R24, MX, XMCL	\$6,732
400	512-4763	TIRES, 15.5 R25, MX, XHA	\$8,808
400	512-4765	TIRES, 460/70 R24, MX, XMCL	\$3,032
400	512-4766	TIRES, 460/70 R24, MX, BIBLOAD	\$3,411
400	506-7650	TRAILER, ELECTRICS, 7 PIN	\$310
400	609-2323	TRAILER, BRAKE VALVE	\$2,175
400	609-2378	TRAILER, ELECTRICS & BRAKE	\$2,486
400	506-7537	HITCH, FIXED, 12T	\$523
400	506-7533	HITCH, MANUAL, ROADING	\$1,489
400	506-7532	HITCH, TOWING, AUTOMATIC	\$1,927
400	506-7538	HITCH, HYDRAULIC, ROADING	\$3,303
400	506-7536	HITCH, PITON FRAME, AUTOMATIC	\$2,175
400	587-2231	FENDERS, SET OF FOUR, 19.7"	\$3,032
400	566-6781	BEACON, ROTATING	\$306
400	566-6781	BEACON, LED STROBE	\$396
400	497-9575	MIRROR, TOW HITCH	\$201
400	497-9576	MIRROR, CONVEX, TOW HITCH	\$505
400	528-2072	REVERSING CAMERA 1	\$447
400	497-9632	REVERSING SENSOR	\$2,175
400	496-6529	WINDOW, REAR, EXT RELEASE	\$122
400	471-9523	BRICK GUARD, FRONT SCREEN	\$1,530
400	472-0940	BRICK GUARD, ROOF	\$1,597
400	457-3521	LOCKS, SET OF THREE	\$114
400	541-9094	TOOL BOX	\$264
400	575-8210	BOOM PROP	\$228
400	500-4475	CARRIAGE, STANDARD, 60"	\$2,369
400	301-9758	CARRIAGE, STANDARD 72"	\$2,544
400	549-8955	CARRIAGE,SIDE TILT, 50"	\$5,170
400	549-8956	CARRIAGE,SIDE TILT, 72"	\$5,753
400	301-9753	FORK, PALLET 2.36" X 5" X 48"	\$883
400	301-9754	FORK, PALLET 2.36" X 6" X 60"	\$1,134
400	311-2854	FORK, DUAL TAPER 2" X 6" X 72"	\$1,147
400	343-9736	PLATFORM, FORK MTD4'X8' ANSI ENG	\$3,862



# Cat<sup>®</sup> TH255C

TELEHANDLER

## Specifications

### Engine

Model	TD 2.9L L4*	
Gross Power	55 kW	74 hp
Maximum Torque @ 1,800 rpm	260 N-m	193 lbf-ft
Displacement	2.9 L	177 in <sup>3</sup>

\*U.S. EPA Tier 4 Final emission standards

### Weights

Operating Weight with Carriage and Forks	4999 kg	11,000 lb
--	---------	-----------

### Operating Specifications

Rated Load Capacity	2495 kg	5,500 lb
Maximum Lift Height	5600 mm	18 ft 4 in
Maximum Forward Reach	3300 mm	10 ft 11 in
Capacity at Maximum Height	1361 kg	3,000 lb
Capacity at Maximum Reach	771 kg	1,700 lb
Turning Radius over Tires		
12 × 16.5 Tires	3200 mm	127 in
14 × 17.5 Tires	3100 mm	125 in
Top Travel Speed		
12 × 16.5 Tires	24 km/h	15 mph
14 × 17.5 Tires	27 km/h	17 mph

### Service Refill Capacities

Fuel Tank	91 L	24 gal
Hydraulic System	91 L	24 gal

### Tires

Standard	12.00 × 16.5
Optional	14.00 × 17.5 10.5 × 18 33 × 12-20 non-marking

### Brakes

Service Brakes	Inboard wet disc brakes on front axle
Parking Brakes	Wet disc spring-applied hydraulic release

- Light on dash indicates when brake is on.

### Axles

- Planetary on front and rear axles.
- High bias limited slip differential on front axle.

### Hydraulic System – Implement

Pump Type	Gear pump	
Maximum System Pressure	241 bar	3,500 psi
Maximum Pump Flow	72.3 L/min	19 gal/min

- Auxiliary Hydraulic Circuit used for all attachments equipped with cylinders or other hydraulic components. Consists of valves, controls, and hydraulic lines.

### Transmission

Transmission	Hydrostatic
Forward	Variable Speed
Reverse	Variable Speed

### Boom Performance

Boom Up	6.8 Seconds	
Boom Down	4.6 Seconds	
Tele In	3.8 Seconds	
Tele Out	6.7 Seconds	
Bucket Dump	2.5 Seconds	
Bucket Crowd	2.0 Seconds	
Drawbar Pull (Loaded)	38.7 kN	8,700 lb

### Instruments

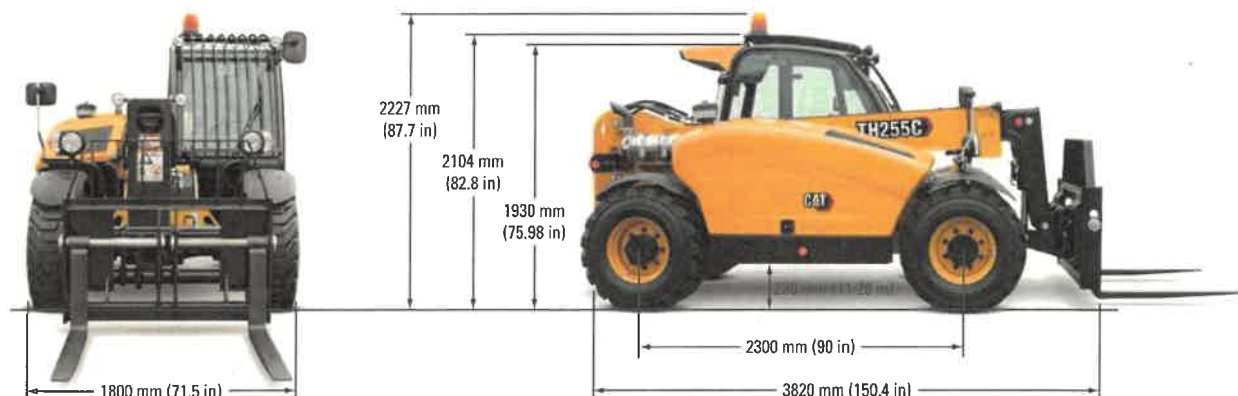
- Indicators for machine hours, fuel-level, steer mode, steering pressure, battery charge, coolant temperature, parking brake and engine pre-heat.
- Reverse motion alarm.
- Panel and switches are illuminated for night operation.



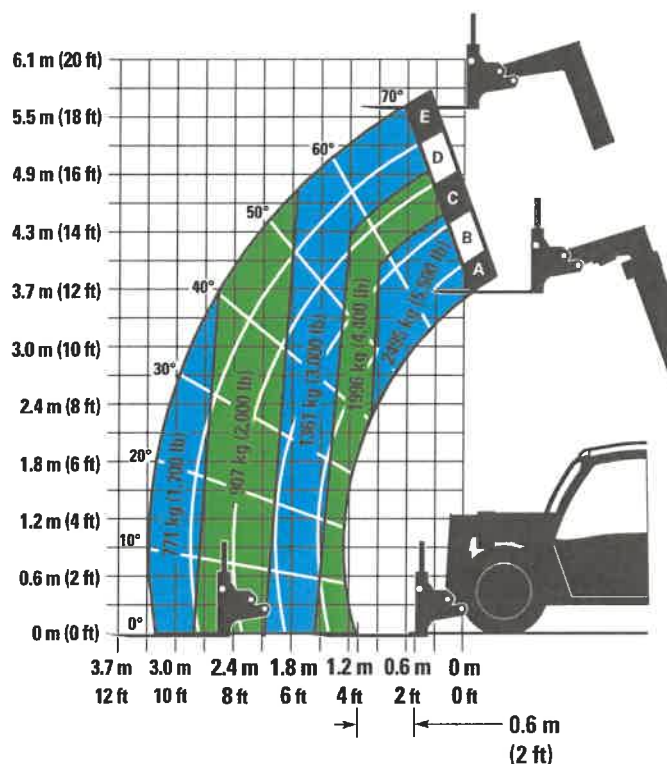
# TH255C Telehandler

## Dimensions

All dimensions are approximate.



## Load Chart and Dimensions



### IMPORTANT

Rated lift capacities shown are with machine equipped with carriage and pallet forks. The machine must be level on a firm surface with undamaged, properly inflated tires. Machine specifications and stability are based on rated lift capacities at specific boom angles and boom lengths. (If specifications are critical, the proposed application should be discussed with your dealer.)

DO NOT exceed rated lift capacity loads, as unstable and dangerous machine conditions will result.

DO NOT tip the machine forward to determine the allowable load.

Use only JLG approved attachments with proper material handler model/attachment load capacity charts displayed in the operator's cab.

Due to continuous product improvements, machine specifications and/or equipment changes may be made without prior notification. This machine meets or exceeds ANSI/ITSDF B56.6-2016 as originally manufactured for intended applications.

For more complete information on Cat products, dealer services, and industry solutions, visit us on the web at [www.cat.com](http://www.cat.com)

© 2021 Caterpillar  
All rights reserved

Materials and specifications are subject to change without notice. Featured machines in photos may include additional equipment. See your Cat dealer for available options.

CAT, CATERPILLAR, LET'S DO THE WORK, their respective logos, "Caterpillar Corporate Yellow," the "Power Edge" and Cat "Modern Hex" trade dress as well as corporate and product identity used herein, are trademarks of Caterpillar and may not be used without permission.

AEHQ7078-03 (08-2021)  
Replaces AEHQ7078-02  
(N Am)

