

GENERAL NOTES

1. THE CONTRACTOR SHALL REVIEW ALL DRAWINGS AND SPECIFICATIONS AND ADVISE THE ENGINEER OF ANY CONFLICTS OF REPRESENTATION BETWEEN DRAWINGS AND/OR SPECIFICATIONS PRIOR TO COMMENCING WITH CONSTRUCTION.
2. THE CONTRACTOR SHALL FIELD-VERIFY EXISTING CONDITIONS PRIOR TO PERFORMING ANY WORK UNDER THIS CONTRACT AND NOTIFY THE ENGINEER IN WRITING OF ANY DIFFERENCES BEFORE COMMENCING WITH ANY CONSTRUCTION.
3. HORIZONTAL COORDINATES ARE BASED ON FLORIDA STATE PLANE COORDINATE SYSTEM. VERTICAL ELEVATIONS ARE BASED ON NGVD 1929 DATUM.
4. THE LOCATIONS, SIZES, AND ELEVATIONS OF EXISTING UTILITIES AS SHOWN ARE APPROXIMATE. THE CONTRACTOR SHALL COORDINATE WITH THE ENGINEER TO OBTAIN ANY AVAILABLE RECORD DRAWINGS AND SHALL DETERMINE THE EXACT LOCATION AND ELEVATION IN THE FIELD. THE CONTRACTOR SHALL ANTICIPATE THAT SCANNING AND EXCAVATION USING LIGHT EQUIPMENT AND HAND METHODS WILL BE NECESSARY IN AREAS NEAR EXISTING UTILITIES AND STRUCTURES TO AVOID DAMAGING THESE FACILITIES. THE CONTRACTOR SHALL CONTACT BELLSOUTH, THE LOCAL TELEPHONE COMPANY AND COMCAST, THE LOCAL CABLE TV PROVIDER TO VERIFY THE LOCATION OF BURIED TELEPHONE AND CABLE TV UTILITIES. NONE HAVE BEEN INDICATED ON THE DRAWINGS. CALL 1-800-432-4770 BEFORE DIGGING OR TRENCHING OPERATIONS BEGIN. CONTRACTOR SHALL ALSO CONTACT KEYS ENERGY TO LOCATE SECONDARY ELECTRIC LINES.
5. THE CONTRACTOR SHALL DETERMINE THE EXACT LOCATION AND ELEVATION IN THE FIELD PRIOR TO INSTALLING ANY NEW WORK THAT CROSSES OR CONNECTS TO EXISTING UTILITY SYSTEMS. LOCATIONS OF NEW UTILITIES SHALL BE ADJUSTED IN A MANNER APPROVED BY THE ENGINEER TO AVOID CONFLICTS. DAMAGES TO UTILITIES RESULTING FROM THE CONTRACTOR'S OPERATIONS SHALL BE REPAIRED BY THE CONTRACTOR AT NO COST TO THE CLIENT.
6. ALL EXCAVATION, TRENCHING, SHEETING, SHORING AND BRACING SHALL BE INSTALLED AS REQUIRED IN ACCORDANCE WITH LOCAL, STATE, AND FEDERAL REGULATIONS, INCLUDING OSHA (29 CFR 1926).
7. ALL ITEMS INDICATED TO BE REMOVED OR DEMOLISHED SHALL BE REVIEWED WITH THE DEVELOPER TO DETERMINE IF THE ITEM IS TO BE PROPERTY OF THE CONTRACTOR. ALL ITMES SHALL BE REMOVED AND DISPOSED OF IN ACCORDANCE WITH ALL LOCAL, STATE, AND FEDERAL REGULATIONS, UNLESS OTHERWISE NOTED. NO SALVAGE VALUE IS EXPRESSED OR IMPLIED BY THESE CONTRACT DOCUMENTS FOR ANY ITEMS TO BE REMOVED OR DEMOLISHED.
8. THE CONTRACTOR SHALL BE RESPONSIBLE FOR THE SECURITY OF THE CONTRACTOR'S EQUIPMENT, MATERIALS, AND PERSONNEL, AND SHALL PROVIDE ADEQUATE BARRIERS TO PREVENT RISK TO OTHERS FROM THE CONTRACTOR'S ACTIVITIES.
9. WHERE ACTUAL DIMENSIONS AND SIZES ARE PROVIDED IN THE DRAWINGS, THEY SHALL TAKE PRECEDENCE OVER SCALED DIMENSIONS. LARGE SCALE DRAWINGS SHALL TAKE PRECEDENCE OVER SMALL SCALE DRAWINGS.
10. THE CONTRACTOR SHALL SEQUENCE HIS OPERATIONS SUCH THAT ORANGE MESH SAFETY FENCING IS PROVIDED ALONG ALL AREAS BEING TRENCHED AND NO TRENCH IS LEFT OPEN AT THE END OF THE WORK DAY.
11. NO CONNECTIONS FOR THE PURPOSE OF OBTAINING WATER SUPPLY DURING CONSTRUCTION SHALL BE MADE TO ANY FIRE HYDRANT OR BLOW-OFF STRUCTURE WITH OUT FIRST OBTAINING A CONSTRUCTION METER FROM THE FLORIDA KEYS AQUEDUCT AUTHORITY.
12. IF UNSATISFACTORY MATERIAL FOR ADEQUATE BEARING IS ENCOUNTERED AT THE NORMAL SUBGRADE, THE UNSATISFACTORY MATERIAL SHALL BE REMOVED AND REPLACED WITH SUITABLE FOUNDATION STABILIZATION MATERIAL AS SPECIFIED.
13. IN GENERAL, EXISTING STRUCTURES AND UTILITIES ARE NOTED AS EXISTING AND/OR SHOWN IN LIGHT LINE WEIGHT. NEW CONSTRUCTION IS SHOWN IN HEAVY LINE WEIGHT.
14. ALL FIELD LAYOUT AND SURVEYING FOR CONSTRUCTION OF THIS PROJECT SHALL BE PROVIDED BY THE CONTRACTOR AT HIS EXPENSE, UNDER THE DIRECTION OF A FLORIDA LICENSED PROFESSIONAL LAND SURVEYOR.

NEW CONSTRUCTION NOTES

1. IT IS THE CONTRACTOR'S RESPONSIBILITY DURING CONSTRUCTION OF NEW UTILITIES TO ANTICIPATE AND PLAN FOR CROSSINGS OF NEW AND EXISTING UTILITIES AND SUBSURFACE FEATURES. UTILITY LINES SHALL HAVE PRIORITIES AS FOLLOWS:

A. GRAVITY SANITARY SEWER LINES SHALL BE CONSTRUCTED TO GRADES AS INDICATED.

B. ANY GRAVITY UTILITY DISCOVERED TO CONFLICT WITH GRADES FOR NEW SANITARY SEWER LINES SHALL BE IMMEDIATELY BROUGHT TO THE ATTENTION OF THE ENGINEER WITH POSSIBLE SOLUTIONS FOR HORIZONTAL AND VERTICAL ADJUSTMENT.

C. POTABLE WATER LINES, ELECTRICAL, COMMUNICATION, AND CABLE TV DISTRIBUTIONS WILL REQUIRE RELOCATION AS NECESSARY TO ACCOMMODATE NEW SANITARY SEWER LINES. THE CONTRACTOR SHALL DETERMINE, PRIOR TO INSTALLATION, THE METHOD BY WHICH THESE LINES SHALL BE REROUTED ABOVE OR BELOW NEW SANITARY SEWER LINES. THE CONTRACTOR SHALL REFER TO THE CONSTRUCTION DRAWINGS AND SPECIFICATIONS FOR SEPARATION REQUIREMENTS BETWEEN INDIVIDUAL UTILITY LINES, BOTH HORIZONTALLY AND THE CONTRACTOR SHALL INCLUDE IN THE VERTICALLY, AND SPECIAL TREATMENT REQUIREMENTS. BID PRICE ANY SPECIAL TREATMENT REQUIRED FOR UTILITY INSTALLATION, INCLUDING ADJUSTMENTS OF EXISTING UTILITIES.
2. NEW SLABS SHALL BE GRADED TO POSITIVELY DRAIN WITHOUT ANY STORMWATER PONDING.
3. PROVIDE CONTRACTION JOINTS AT 12' O.C. MAX. JOINT PATTERNS IN PAVEMENTS AND SIDEWALKS SHALL BE GENERALLY SQUARE. AT CURBS PROVIDE FULL DEPTH EXPANSION JOINTS AT 100 FT. O.C. MAX, AND AT LOCATIONS WHERE STRAIGHT CURB RUNS CHAGE DIRECTIONS. AT SIDEWALKS PROVIDE WEAKENED PLANE CONTRACTION JOINTS NOT MORE THAN 5'-0" MAX. AND EXPANSION JOINTS AT 20-FT. O.C. MAX (TOOL ALL EDGES). INSTALL SELF-LEVELING SEALENT AT ALL ISOLATION/ EXPANSION JOINTS.

EROSION CONTROL NOTES

1. EROSION, SEDIMENT, AND TURBIDITY CONTROL MEASURES SHALL BE PROVIDED THROUGHOUT CONSTRUCTION. THE CONTRACTOR IS RESPONSIBLE FOR MAINTAINING AND REPAIRING ALL SLOPES AND SURFACES THROUGHOUT CONSTRUCTION AND UNTIL A STABLE SURFACE CONDITION EXISTS. THE CONTRACTOR SHALL MINIMIZE THE EXPOSED AREA AT ANY POINT DURING CONSTRUCTION AS MUCH AS PRACTICAL.
2. FILTER FABRIC SILT FENCE SHALL BE IN CONFORMANCE WITH SECTION 985, FDOT SPECIFICATION.
3. CONTRACTOR SHALL INSTALL EROSION CONTROLS NOTED ON DRAWINGS AND APPLICABLE PERMITS. EROSION CONTROLS SHALL BE MAINTAINED UNTIL A PERMANENT STAND OF GRASS IS PLANTED ONSITE.
4. BALED HAY OR STRAW BARRIERS SHALL BE CONSTRUCTED AND MAINTAINED IN CONFORMANCE WITH FDOT INDEX NO. 103.
5. SILT FENCE LOCATIONS SHOWN HEREON ARE FOR CLARITY ONLY AND SHOULD BE CONSTRUCTED WITHIN PROPERTY LINES.
6. PROVIDE EROSION CONTROL MEASURES CONSISTING OF STAKED SILT FENCES AND HAY BALES ALONG THE PROPOSED LIMITS OF CONSTRUCTION AS INDICATED ON THE DRAWINGS. PROVIDE ADDITIONAL MEASURES AS NECESSARY TO AVOID ADVERSE IMPACTS TO JURISDICTIONAL AREAS (WETLANDS OR WATER BODIES) AND OFF-SITE LANDS AND WATERBODIES. MAINTAIN THESE MEASURED DAILY UNTIL CONSTRUCTION ACCEPTANCE BY THE OWNER AND THEN REMOVE AND LEGALLY DISPOSE OF SAID MEASURES.
7. EROSION CONTROL SHALL MAINTAINED WITHIN CONSTRUCTION AREA BY QUICKLY STABILIZING DISTURBED AREA TO PREVENT THE RELEASE OF SEDIMENT. THIS SHALL BE ACCOMPLISHED USING GRASS COVER, HAY BALES AND OTHER MEANS ACCEPTABLE TO OWNER, ENGINEER AND REGULATORY AGENCIES.
8. DURING CONSTRUCTION, THE CONTRACTOR SHALL, AT THE REQUEST OF THE OWNER OR AS NECESSARY MODIFY, RELOCATE THE ENVIRO-FENCE AND/OR SILT FENCE TO ALLOW FOR ACCESS AND TO COMPLETE CONSTRUCTION. IT IS THE CONTRACTOR'S RESPONSIBILITY TO MAINTAIN ADEQUATE EROSION CONTROL AT ALL TIMES.
9. DURING CONSTRUCTION, THE CONTRACTOR WILL PROVIDE TEMPORARY SEEDING AND MULCHING FOR AREA THAT HAVE BEEN CLEARED AND NOT REWORKED WITHIN 7 CALENDAR DAYS DURING THE WET SEASON (APRIL THROUGH SEPTEMBER AND 14 CALENDAR DAYS DURING THE DRY SEASON (OCTOBER THROUGH MARCH). ALSO, ALL SIDE SLOPES SHALL BE SODDED OR SEEDED AND MULCHED WITHIN 7 DAYS DURING WET SEASON AND 14 DAYS DURING THE DRY SEASON.
10. ALL SURFACE WATER DISCHARGE FROM SITE, INCLUDING DEWATERING DISCHARGE SHALL MEET STATE WATER QUALITY STANDARDS (LESS THAN 29 NTU ABOVE BACKGROUND) PRIOR TO REACHING ANY WATERS OF THE STATE INCLUDING WETLAND.
11. IN THE EVENT THAT THE EROSION PREVENTION AND CONTROL DEVICES SHOWN IN THESE PLANS PROVE NOT TO BE EFFECTIVE. ALTERNATE METHODS FOR MAINTAINING STATE WATER QUALITY STANDARDS FOR DISCHARGE FROM THE CONSTRUCTION SITE WILL BE REQUIRED. ANY ALTERNATE EROSION PREVENTION AND CONTROL DEVICES MUST BE APPROVED BY MONROE COUNTY AND SFWMD COMPLIANCE PERSONNEL PRIOR TO PLACEMENT.

LEGEND

GENERAL

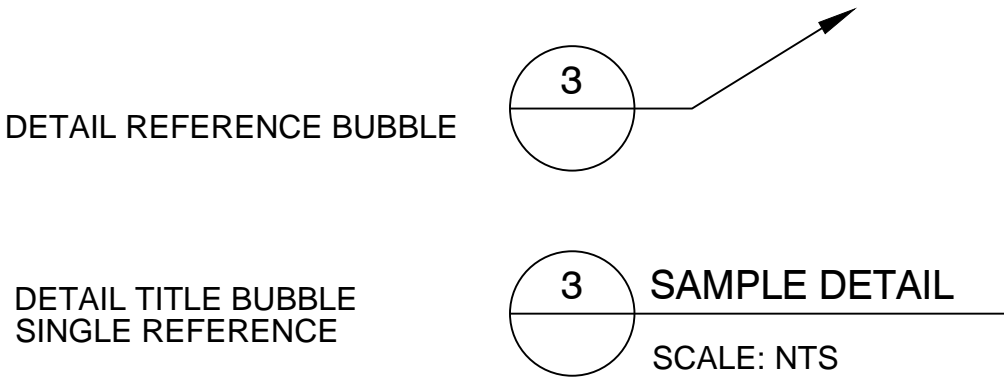
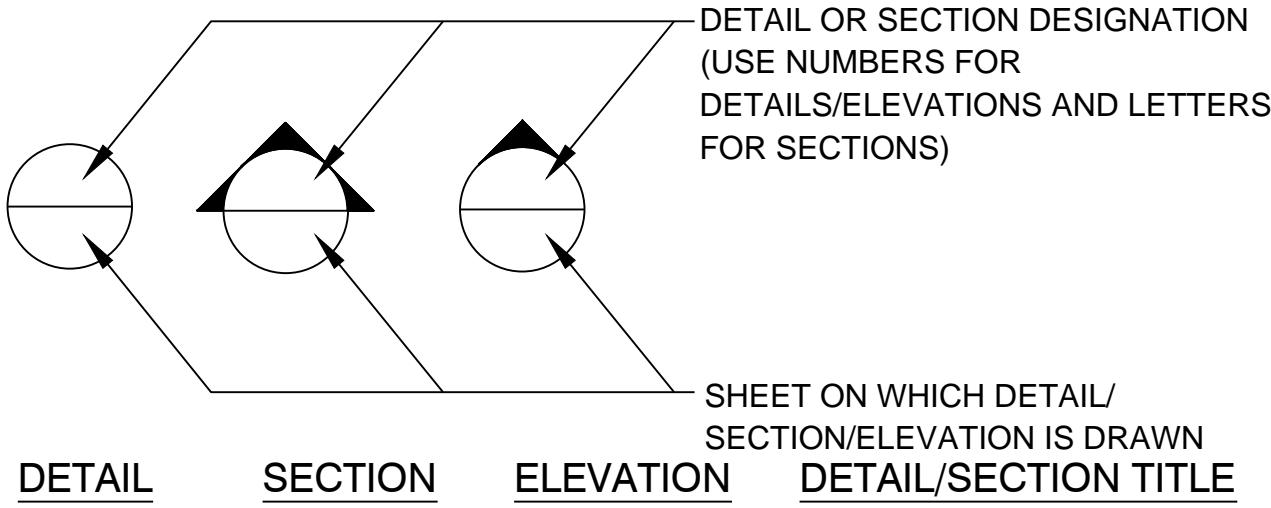
- RIGHT-OF-WAY AND/ OR PROPERTY LINE
- TL 1500

TAX LOT NUMBER
- ▲

CONTRACTOR'S SURVEY REFERENCE
- 5

KEY NOTE MARKER
- 9

(ON SITE PLAN) # OF PARKING SPACES



BUBBLE SYMBOLS

CIVIL ENGINEERING • REGULATORY PERMITTING • CONSTRUCTION MANAGEMENT

KEY WEST OFFICE
1010 EAST WASHINGTON AVE. SUITE 201
KEY WEST, FLORIDA 33040
TEL (305) 293-9440 FAX (305) 296-0243

PEREZ ENGINEERING
& DEVELOPMENT, INC

CERTIFICATE OF AUTHORIZATION No. 8579

ALLEN E. PEREZ P.E.
Florida P.E. NO. 51468
May 28, 2014

REVISIONS:

ORIGINAL: MAY 2014

1
2
3
4
5
6

WILLIAM STREET IMPROVEMENTS

KEY WEST, FL 33040

GENERAL NOTES

CITY OF KEY WEST

P.O. BOX 1409

KEY WEST, 33041

JOB NO. 141032

DRAWN BGO

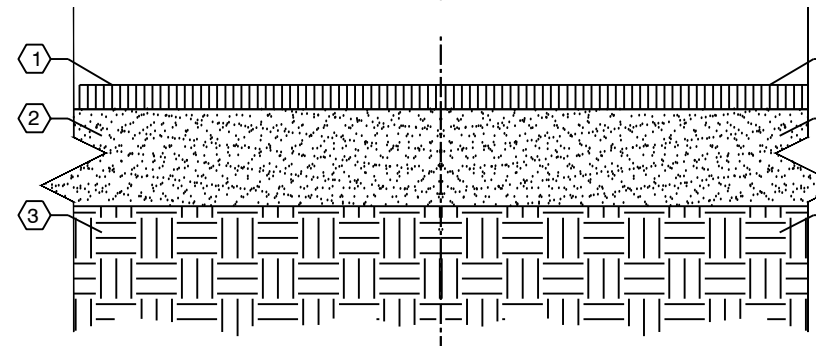
DESIGNED AEP

CHECKED AEP

QC

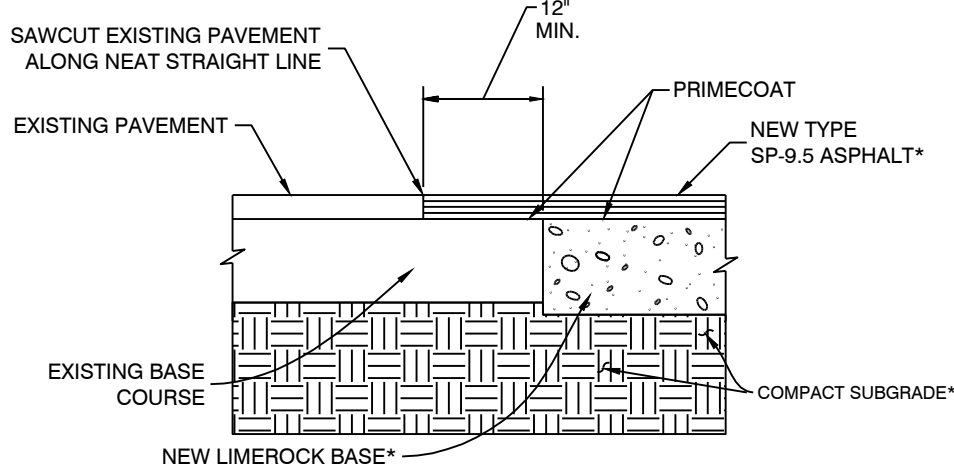
SHEET

C-1



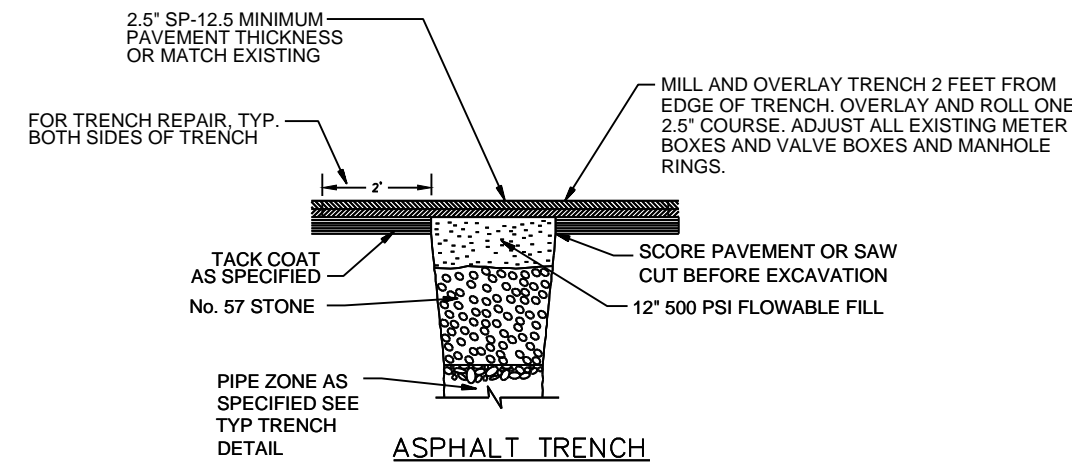
- KEYED NOTES**
- 2.5" SP-12.5 STRUCTURAL COURSE OVER PRIME COAT
 - 10" MIN LIME ROCK BASE COURSE COMPACTED TO 98% ASTM D-1557
 - 12" SUBGRADE COMPACTED TO 95% OF ASTM D-1557
- NOTE:** PAVEMENT TO BE BUILT IN COMPLIANCE WITH FDOT STANDARDS AND SPECIFICATIONS.

1 Asphalt Pavement Detail NTS

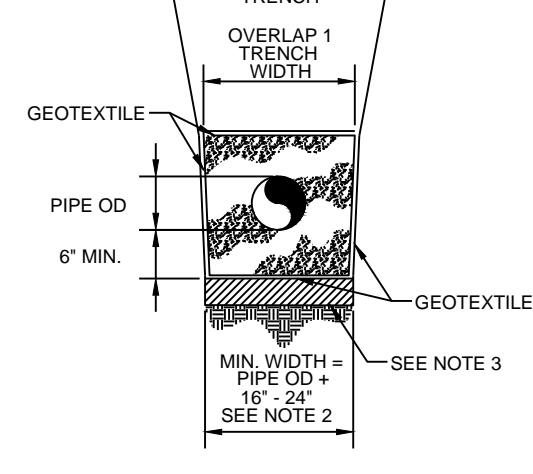


***NOTE:** FOR MATERIAL DEPTHS AND TESTING REQUIREMENTS OF NEW ASPHALT CONSTRUCTION, PLEASE REFER TO CIVIL DETAIL # 1

2 Pavement Connection to Existing Surface NTS

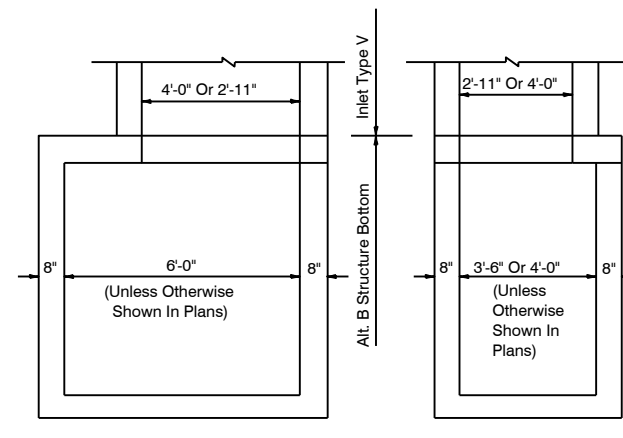


3 Asphalt Surface Repair for Trench NTS



- NOTES:**
- GEOTEXTILE MATERIAL AROUND ALL SANITARY SEWER AND STORMWATER PIPES AND BOTTOM OF STRUCTURES, AND WHEN DIRECTED BY THE ENGINEER.
 - MAX PAYMENT PER YD SHALL BE IN ACCORDANCE WITH DIMENSIONS SHOWN OR ACTUAL DIMENSIONS, WHICHEVER IS LESS. NO ADDITIONAL PAYMENT WILL BE MADE FOR OVERLAP.
 - IF MUCK IS ENCOUNTERED IN TRENCH BED OVEREXCAVATE AND BACKFILL WITH A MINIMUM OF 2 FEET OF No. 4 ROCK.

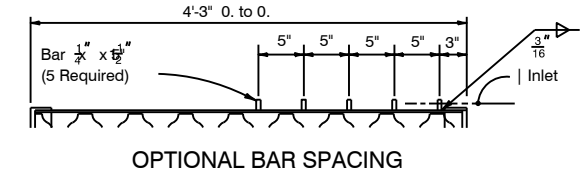
4 Typical Trench NTS



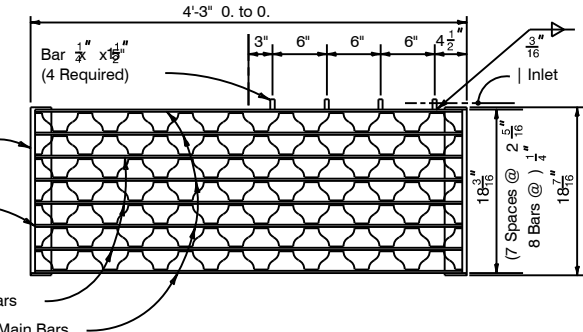
INLET WITH STRUCTURE BOTTOM

GENERAL NOTES

- This inlet is designed for village sewers, ditches, or other areas subject to heavy wheel loads, minimum debris and subject to pedestrian and/or bicycle traffic.
- When alternate "G" grate is specified in plans, the grate is to be hot dipped galvanized after fabrication.
- Reinforcing - No. 4 bars at 12" cts. both ways. Cut or bend bars out of way of pipe to clear pipe.
- All exposed edges and corners shall be tool to radius, 1/2".
- Recommended maximum pipe sizes shown are for concrete pipe.
- For supplementary details see Index No. 201.

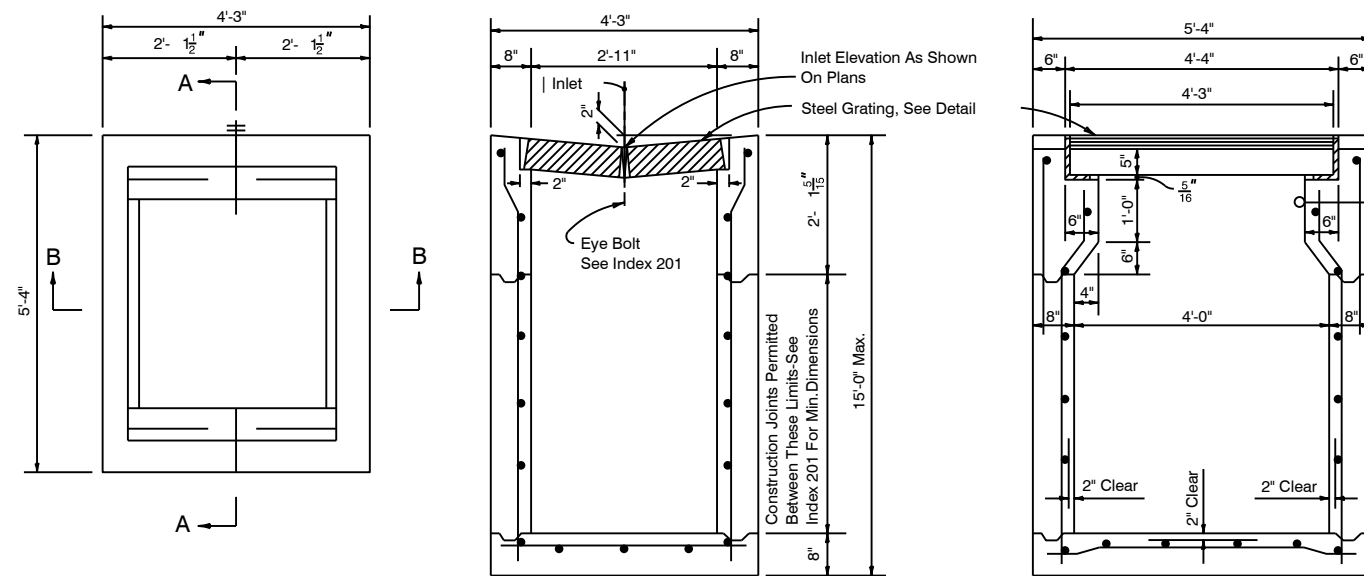


OPTIONAL BAR SPACING

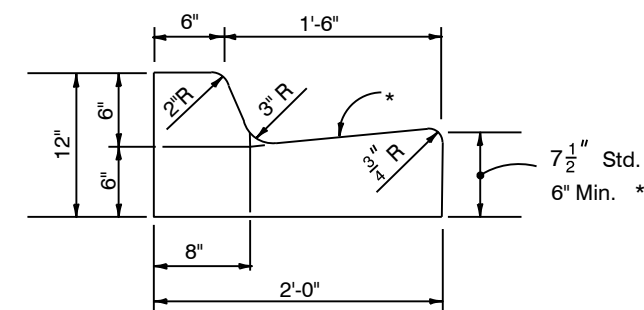


STEEL GRATE

TWO REQUIRED PER INLET
5" Steel Grate
Main Bars 5" x 1/2"
Intermediate Bars 1/2" x 1/2"
Reinforcing Bars 1/2" x 1/2"
Steel Grate: Manufactured By Borden, Florida Steel, U.S. Foundry (w/ing, Rebar, Grout, Or Equal)



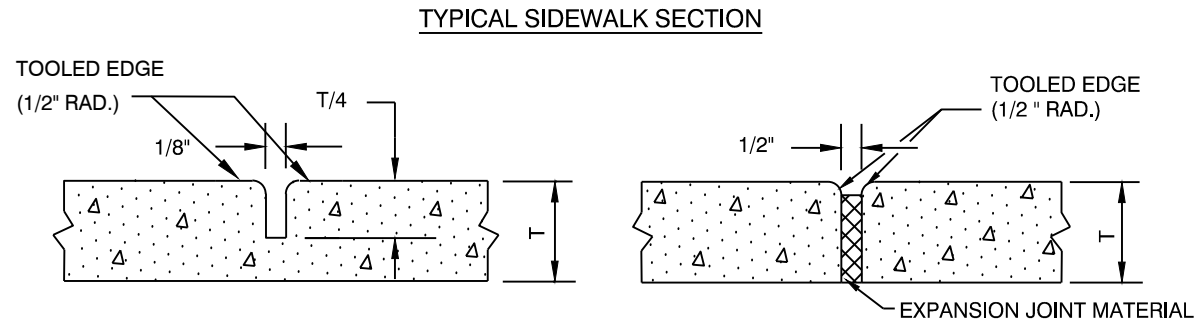
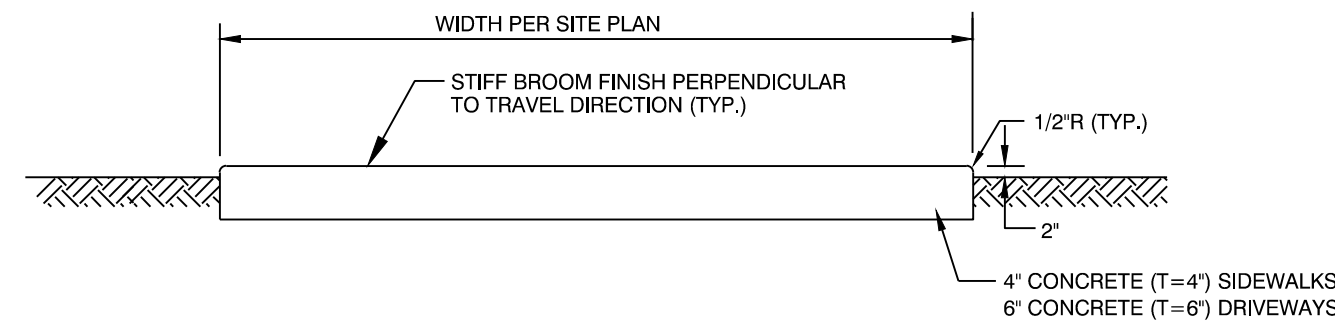
5 Type "V" Gutter Inlet NTS



CONCRETE CURB AND GUTTER

CONTRACTION JOINT IN CURB AND GUTTER

- GENERAL NOTES**
- For curb, gutter, and curb provide joints at 10' centers (max.). Contraction joints adjacent to concrete pavement on tangents and flat curves are to match the pavement joints, with intermediate joints not to exceed 10' centers. Curb, gutter and curb & gutter expansion joints shall be located in accordance with FDOT Section 520 of the standard specifications.

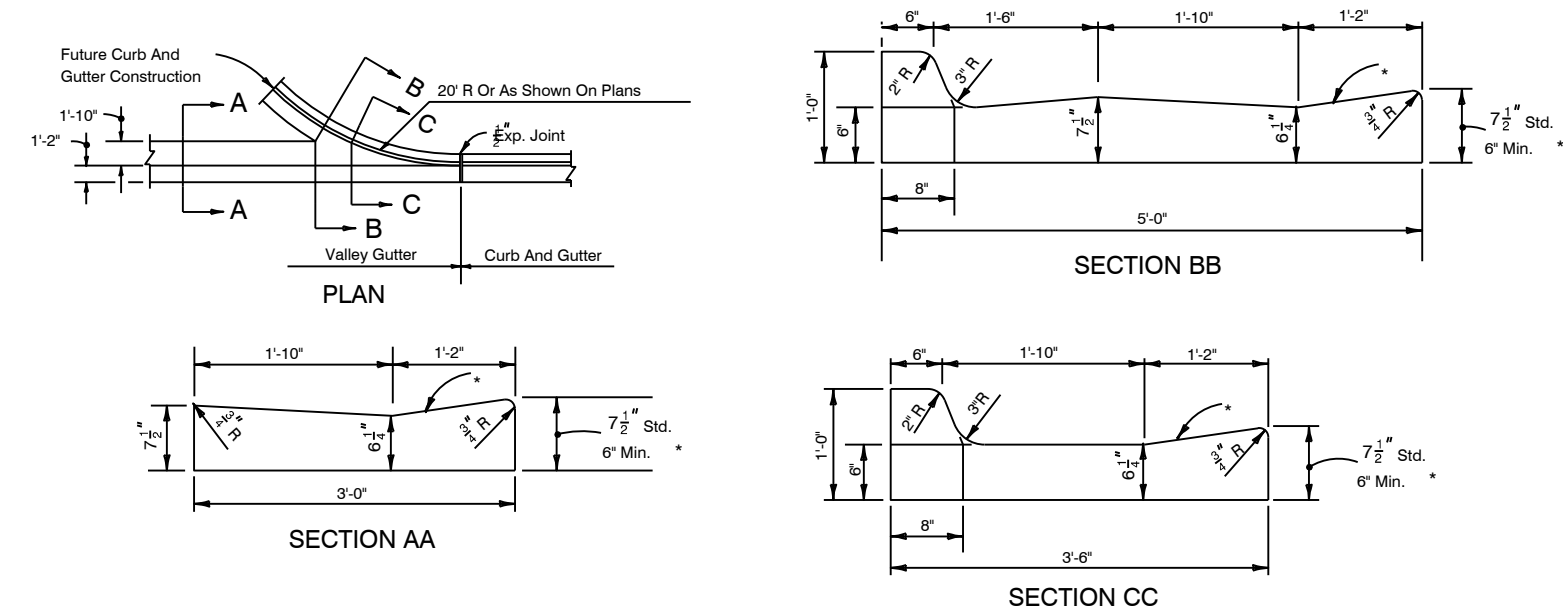


CONTRACTION JOINT

EXPANSION JOINT

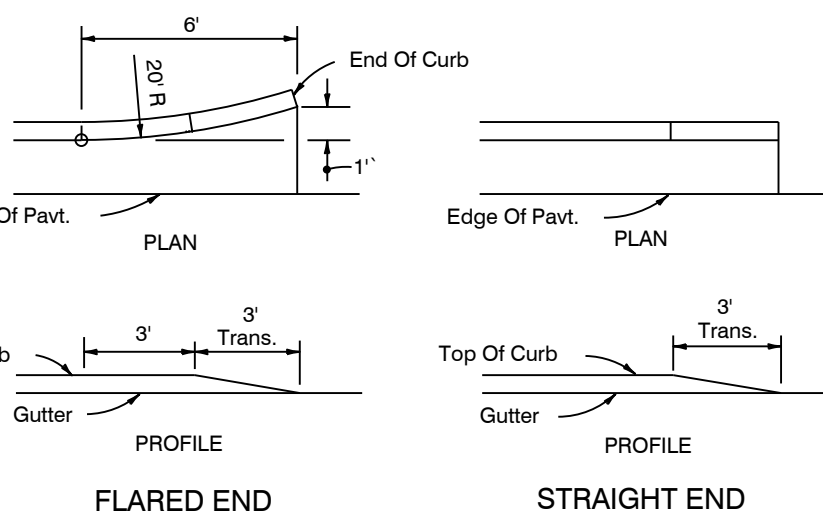
- NOTES:**
- PROVIDE EXPANSION JOINTS WHERE NEW SIDEWALKS ABUT STRUCTURES AND CONTRACTION JOINTS AT INTERVALS EQUAL TO SIDEWALK WIDTH.
 - REPLACE CONCRETE SIDEWALKS AT SCORED JOINTS TO AVOID A PATCHED APPEARANCE. PROVIDE A 2" LEVELING COURSE BENEATH NEW SIDEWALK.

7 Typical Sidewalk Detail NTS



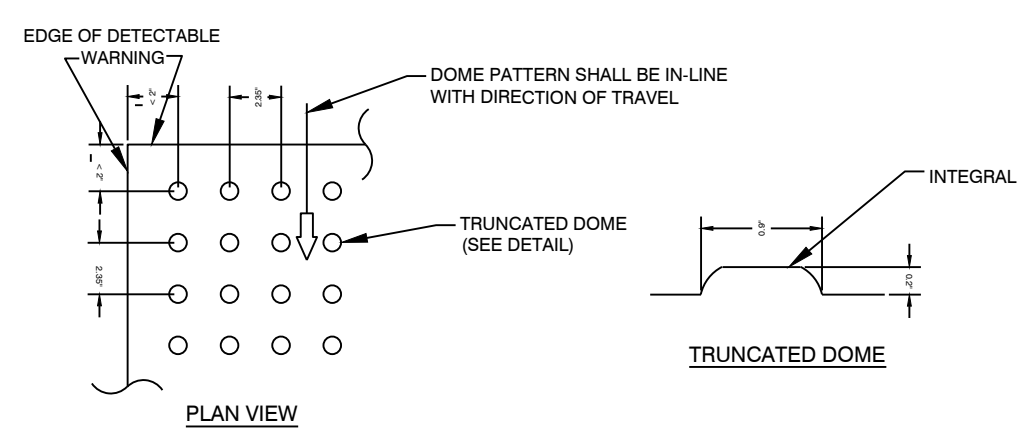
CONCRETE CURB AND GUTTER

8 Valley Gutter Detail NTS

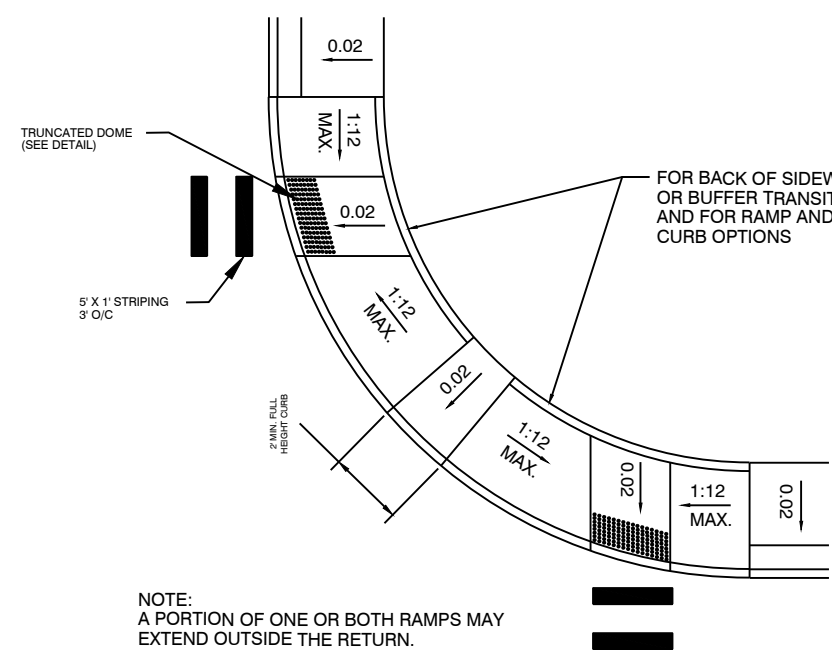


CURB AND GUTTER ENDINGS

6 FDOT Type "F" Curb & Gutter NTS

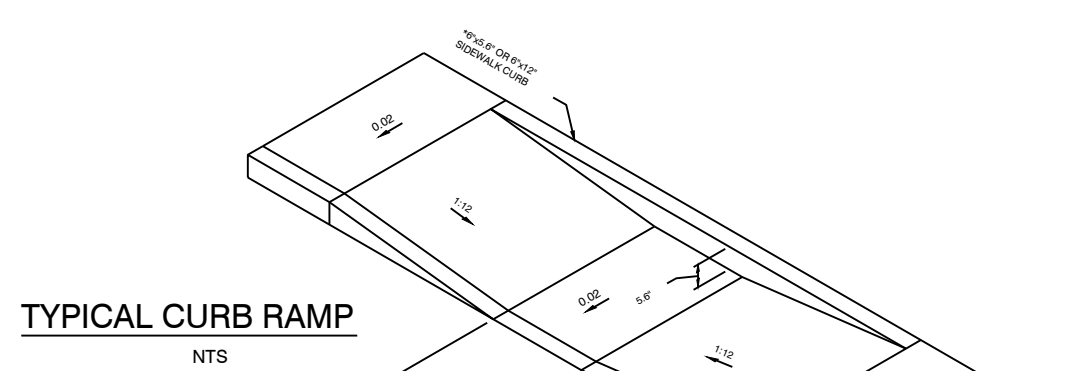


CURB RAMP DETECTABLE WARNING NTS

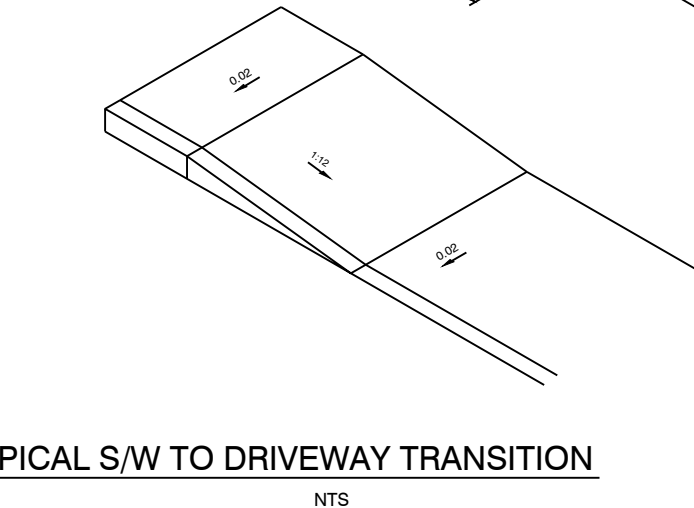


TYPICAL PLACEMENT OF SIDEWALK CURB RAMP AT CURBED RETURNS NTS

9 Sidewalk Transition Detail NTS



TYPICAL CURB RAMP NTS

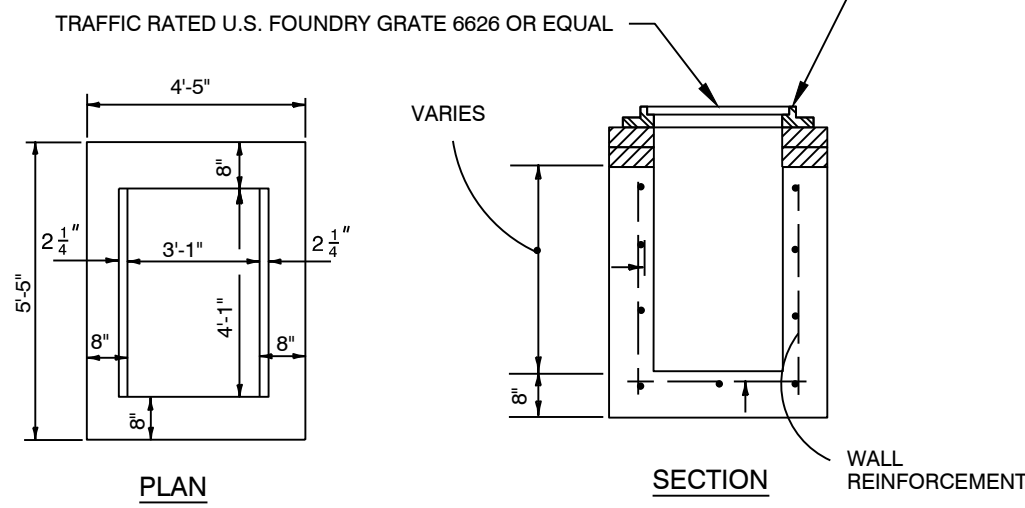


TYPICAL S/W TO DRIVEWAY TRANSITION NTS

- GENERAL NOTE:**
- CURB RAMP RUNNING SLOPES AT UNRESTRAINED SITES SHALL NOT BE STEEPER THAN 1:12 AND CROSS SLOPE SHALL BE 0.02 OR FLATTER. TRANSITION SLOPES SHALL NOT BE STEEPER THAN 1:12.
 - CURB RAMP DETECTABLE WARNING SURFACES SHALL EXTEND THE FULL WIDTH OF THE RAMP AND IN THE DIRECTION OF TRAVEL 24" FROM THE BACK OF CURB. DETECTABLE WARNING SURFACES SHALL BE CONSTRUCTED BY TEXTURING A TRUNCATED DOME PATTERN IN CONFORMANCE WITH U.S. DEPARTMENT OF JUSTICE A.D.A. STANDARDS FOR ACCESSIBLE DESIGN, A.D.A. ACCESSIBILITY GUIDELINES, SECTION 4.29.2. TRANSITION SLOPES ARE NOT TO HAVE DETECTABLE WARNINGS.
 - UNLESS OTHERWISE CALLED OUT IN THE PLANS, THE RAMP DETECTABLE WARNING SURFACE SHALL BE COLORED IN ACCORDANCE WITH FDOT SECTION 651 OF THE STANDARD SPECIFICATIONS.
 - WHERE A CURB RAMP IS CONSTRUCTED WITHIN EXISTING CURB, CURB AND GUTTER AND/OR SIDEWALK, THE EXISTING CURB OR CURB AND GUTTER SHALL BE REMOVED TO THE NEAREST JOINT BEYOND THE CURB TRANSITION OR TO THE EXTENT THAT NO REMAINING SECTION OF CURB OR CURB AND GUTTER IS LESS THAN 6' LONG. THE EXISTING SIDEWALK SHALL BE REMOVED TO THE NEAREST JOINT BEYOND THE TRANSITION SLOPE OR WALK AROUND OR TO THE EXTENT THAT NO REMAINING SECTION OF SIDEWALK IS LESS THAN 6' LONG.

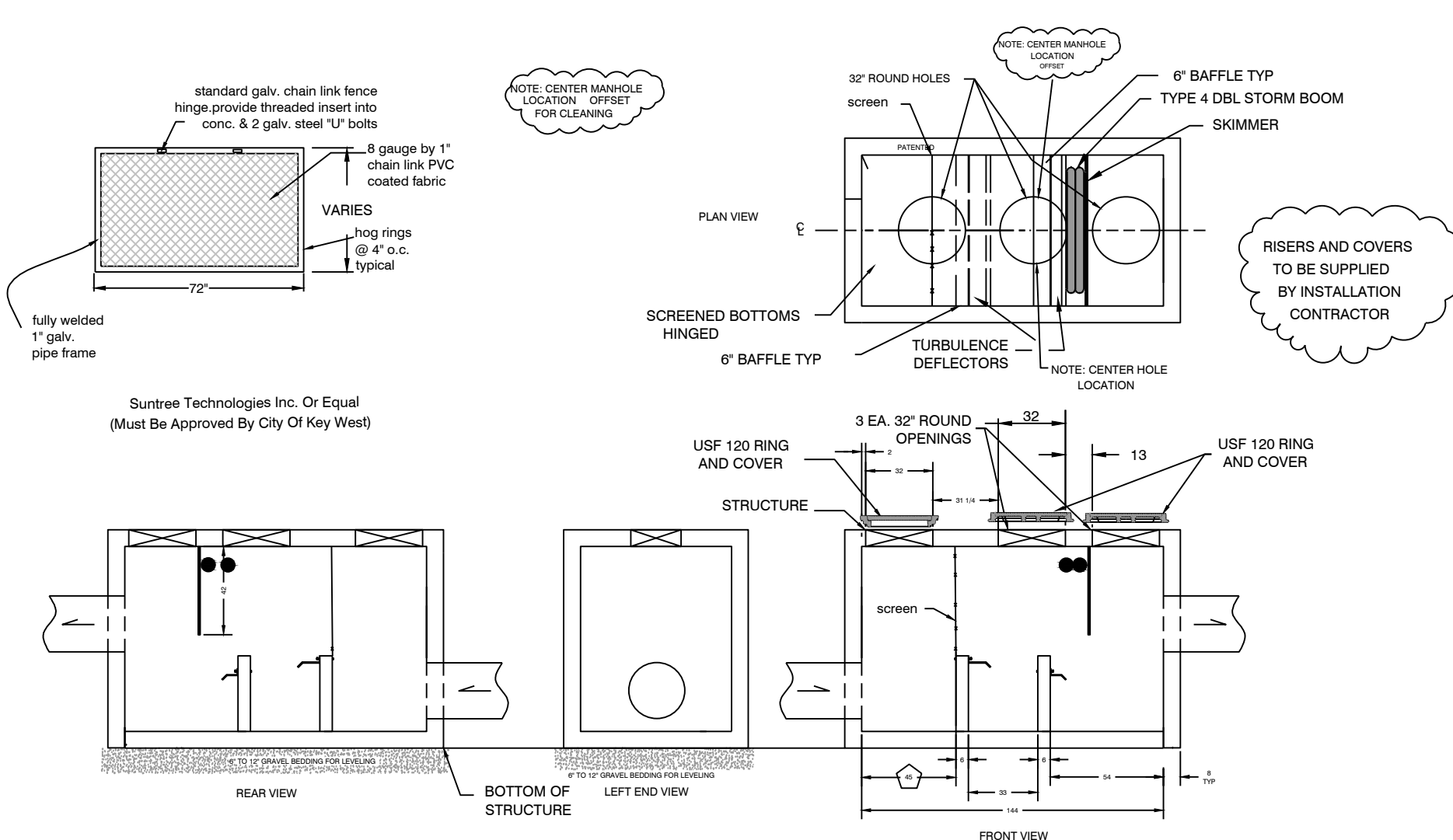
DESIGN NOTE:

- THE COLOR REQUIREMENT IN GENERAL NOTE 3 IS TO PROVIDE A DARK-ON-LIGHT VISUAL CONTRAST BETWEEN THE DETECTABLE WARNING SURFACE AND THE ADJACENT WALKING SURFACE. WHERE ADJACENT WALKING SURFACES ARE COLORED OR ARE CONSTRUCTED WITH MATERIALS OTHER THAN STANDARD CLASS 1 PORTLAND CEMENT CONCRETE IN ACCORDANCE WITH SECTION 602 OF THE STANDARD SPECIFICATIONS, THE PLANS MUST PROVIDE FOR DETECTABLE WARNING SURFACE COLOR OR MATERIALS THAT PROVIDE THE NECESSARY CONTRAST, EITHER DARK-ON-LIGHT OR LIGHT-ON-DARK.



- NOTES:**
- CONCRETE SHALL BE 4000 PSI AT 28 DAYS, TYPE II CEMENT
 - ALL REINFORCEMENT MAY BE WELDED WIRE AS PER ASTM C-478, #4 @ 12" O.C.E.W.
 - FRAME AND GRATE BRICKED TO GRADE BY CONTRACTOR.
 - STRUCTURES TO BE SET ON COARSE AGGREGATE BEDDING

10 Type "D" Ditch Bottom Inlet NTS



- NOTES:**
- CONCRETE 28 DAY COMPRESSIVE STRENGTH $f_c = 5,000$ PSI.
 - REINFORCING: ASTM A-615, GRADE 60.
 - SUPPORTS AN H20 LOADING AS INDICATED BY AASHTO.
 - JOINT SEALANT: BUTYL RUBBER SS-S-00210
 - ALL WALLS, TOP + BOTTOM ARE 8" THICK.
 - STEEL EMBEDDED IN CONCRETE 9" MINIMUM FROM EDGE
 - GROUTING RING TO BE SUPPLIED BY INSTALL CONTRACTOR.
 - DIMENSIONS PENTAGON BLOCK ARE CRITICAL DIMENSIONS.
 - FRAMES & GRATE WHEN REQUIRED SHALL BE USF 4160-6611 GALVANIZED COATED

11 Typical Triple Chamber Baffle Box NTS