

TREES & PALMS TO BE PRESERVED NOTES

- EXISTING TREES TO BE PRESERVED SHALL BEAR SAME RELATIONSHIP TO FINISHED GRADE AS THEY BEAR TO PRE-CONSTRUCTION GRADE.
- EXISTING TREES TO BE PRESERVED SHALL BE PROTECTED WITH STURDY, WEATHERPROOF FENCING AT A MINIMUM FOUR (4) FEET HEIGHT INSTALLED NO CLOSER TO THE TREE TRUNK THAN ITS DRIPLINE. THIS FENCE SHALL BE MAINTAINED IN WORKING ORDER DURING ALL PHASES OF CONSTRUCTION. MAINTAIN TREE PROTECTION ZONES FREE OF WEEDS AND TRASH.
- NO WORK SHALL BE CONDUCTED WITHIN THE DRIPLINE, UNLESS REVIEWED AND APPROVED BY THE CITY OF MIAMI. ALL WORK APPROVED WITHIN THE DRIPLINE SHALL BE COMPLETED BY HAND. PROTECT ROOT SYSTEMS FROM PONDING, ERODING, OR EXCESSIVE WETTING.
- THE PROJECT LIMIT OF CONSTRUCTION AND ALL EXISTING VEGETATION TO REMAIN IS TO BE CLEARLY DEFINED BY STURDY, WEATHERPROOF FENCING AT A MINIMUM OF FOUR (4) FEET HIGH.

TREES & PLANTING TO BE RELOCATED NOTES

- EACH TREE AND PALM TO BE WATER EXCEEDING FIELD CAPACITY EACH DAY PRIOR TO TRANSPLANT. THE WATERING REGIMEN SHOULD BE FOR AS MANY DAYS AS POSSIBLE TO INCREASE THE TURGIDITY OF THE CELLS WITHIN EACH PLANT. EXCEEDING FIELD CAPACITY OF WATER SATURATION ENABLES THE TREES TO BETTER ABSORB THE MOISTURE.
- WATER FOR DICOTS IS MOST IMPORTANT DURING THE FIRST WEEK AFTER MOVING. CONTRACTOR TO MONITOR THE PLANT'S HEALTH DAILY TO INCREASE THE SURVIVABILITY OF THE TREES.
- TREES TO BE RELOCATED TO BE MOVED TO LANDSCAPE CONTRACTOR'S TEMPORARY HOLDING PEN OFF-SITE.
- THE CONTRACTOR IS TO ROOT PRUNE ALL PLANT MATERIAL 90 DAYS MINIMUM IN ADVANCE OF MOVING PLANT MATERIAL. ROOTS TO BE CUT WITH SHARP TOOLS. ALL TOOLS TO BE DISINFECTED WITH ALCOHOL PRIOR TO STARTING THE JOB.
- WHEN LIFTING THE TREE WITH STRAPS, EACH TREE WILL BE WRAPPED WITH BURLAP CLOTH PRIOR TO APPLICATION OF 6 INCH WIDE LIFTING STRAPS OR WIDER.
- ROOT BALL DEPTH SHOULD BE AS DEEP AS POSSIBLE.
- THE CONTRACTOR IS TO WARRANTY ALL RELOCATED PLANT MATERIAL.
- THE CONTRACTOR IS RESPONSIBLE FOR THE WATERING AND FERTILIZING OF ALL PLANT RELOCATED PLANT MATERIAL UNTIL PROJECT COMPLETION.
- ALL RELOCATED PLANT MATERIAL IS TO BE APPROPRIATELY BRACED.
- CONTRACTOR TO NOTIFY LANDSCAPE ARCHITECT TWO WEEKS IN ADVANCE OF ALL SCHEDULED WORK PERTAINING TO THE RELOCATION OF SITE TREES.
- TOP OF ROOTBALL OR ROOT FLAIR SHALL BE AT GROUND LEVEL OR A FEW INCHES ABOVE UPON PLANTING.

TREES & PLANTING TO BE REMOVED NOTES

- THE CONTRACTOR IS TO COMPLETELY REMOVE ALL PLANTER MATERIAL DESIGNATED FOR REMOVAL (I.E. ROOT BALL, DEBRIS, SAW DUST, ETC.).
- THE CONTRACTOR IS TO BACKFILL ALL EXCAVATED ROOT BALLS FLUSH TO THE ADJACENT ELEVATION LEVEL.
- CONTRACTOR TO NOTIFY LANDSCAPE ARCHITECT TWO WEEKS IN ADVANCE OF ALL SCHEDULED WORK PERTAINING TO THE RELOCATION OF SITE TREES.

TREE DISPOSITION SCHEDULE

PALMS SPECIFIED TO BE PRESERVED THAT ARE LOCATED WITHIN THE CITY OF KEY WEST RIGHT OF WAY

#	BOTANICAL NAME	COMMON NAME	DBH.	HT.	SPREAD	ACTION	NOTES
1	VEITCHIA MERRILLII	CHRISTMAS PALM	8"	18'	10'	PRESERVE	CONTRACTOR TO PROTECT AND CARE FOR PLANT MATERIAL
2	THRINAX RADIATA	THATCH PALM	5"	15'	6'	PRESERVE	CONTRACTOR TO PROTECT AND CARE FOR PLANT MATERIAL
4	VEITCHIA MERRILLII	CHRISTMAS PALM	8"	20'	8'	PRESERVE	CONTRACTOR TO PROTECT AND CARE FOR PLANT MATERIAL
5	VEITCHIA MERRILLII	CHRISTMAS PALM	8"	18'	10'	PRESERVE	CONTRACTOR TO PROTECT AND CARE FOR PLANT MATERIAL
6	VEITCHIA MERRILLI	CHRISTMAS PALM	8"	14'	6'	PRESERVE	CONTRACTOR TO PROTECT AND CARE FOR PLANT MATERIAL
11	VEITCHIA MERRILLII	CHRISTMAS PALM	8"	16'	8'	PRESERVE	CONTRACTOR TO PROTECT AND CARE FOR PLANT MATERIAL
12	VEITCHIA MERRILLII	CHRISTMAS PALM	8'	14'	8'	PRESERVE	CONTRACTOR TO PROTECT AND CARE FOR PLANT MATERIAL

A TOTAL OF **7 PALMS** ARE SPECIFIED TO BE PRESERVED LOCATED WITHIN THE CITY OF KEY WEST RIGHT OF WAY.

PALMS SPECIFIED TO BE RELOCATED THAT ARE LOCATED WITHIN THE CITY OF KEY WEST RIGHT OF WAY

9	VEITCHIA MERRILLII	CHRISTMAS PALM	6"	14'	5'	RELOCATE	LOCATION OF PLANT MATERIAL CONFLICTS WITH CONSTRUCTION ENVELOPE
10	VEITCHIA MERRILLII	CHRISTMAS PALM	8"	16'	8'	RELOCATE	LOCATION OF PLANT MATERIAL CONFLICTS WITH CONSTRUCTION ENVELOPE

A TOTAL OF **2 PALMS** ARE SPECIFIED TO BE RELOCATED LOCATED WITHIN THE CITY OF KEY WEST RIGHT OF WAY. TREES TO BE RELOCATED TO APPROVED CITY OF KEY WEST PROPERTY. LANDSCAPE ARCHITECT AND LANDSCAPE CONTRACTOR TO COORDINATE TRANSPLANT ACTIVITY WITH CITY OF KEY WEST ARBORIST AND PLANNING DEPARTMENT.

TREES SPECIFIED TO BE RELOCATED

8	THRINAX RADIATA	THATCH PALM	3"	4'	4'	RELOCATE	LOCATION OF PLANT MATERIAL CONFLICTS WITH CONSTRUCTION ENVELOPE
15	VEITCHIA MERRILLII	CHRISTMAS PALM	8"	24'	8'	RELOCATE	LOCATION OF PLANT MATERIAL CONFLICTS WITH CONSTRUCTION ENVELOPE
15A	VEITCHIA MERRILLII (DOUBLE)	CHRISTMAS PALM	8"	24'	8'	RELOCATE	LOCATION OF PLANT MATERIAL CONFLICTS WITH CONSTRUCTION ENVELOPE
17	VEITCHIA MERRILLII (DOUBLE)	CHRISTMAS PALM	8"	28'	8'	RELOCATE	LOCATION OF PLANT MATERIAL CONFLICTS WITH CONSTRUCTION ENVELOPE
17A	VEITCHIA MERRILLII	CHRISTMAS PALM	8"	28'	8'	RELOCATE	LOCATION OF PLANT MATERIAL CONFLICTS WITH CONSTRUCTION ENVELOPE
17B	VEITCHIA MERRILLII	CHRISTMAS PALM	8"	28'	8'	RELOCATE	LOCATION OF PLANT MATERIAL CONFLICTS WITH CONSTRUCTION ENVELOPE
17C	VEITCHIA MERRILLII (QUAD)	CHRISTMAS PALM	8"	28'	8'	RELOCATE	LOCATION OF PLANT MATERIAL CONFLICTS WITH CONSTRUCTION ENVELOPE
19	VEITCHIA MERRILLII	CHRISTMAS PALM	8"	24'	8'	RELOCATE	LOCATION OF PLANT MATERIAL CONFLICTS WITH CONSTRUCTION ENVELOPE
20	VEITCHIA MERRILLII	CHRISTMAS PALM	8"	24'	8'	RELOCATE	LOCATION OF PLANT MATERIAL CONFLICTS WITH CONSTRUCTION ENVELOPE
21	VEITCHIA MERRILLI	CHRISTMAS PALM	8"	24'	8'	RELOCATE	LOCATION OF PLANT MATERIAL CONFLICTS WITH CONSTRUCTION ENVELOPE
23	VEITCHIA MERRILLII	CHRISTMAS PALM	6"	24'	8'	RELOCATE	LOCATION OF PLANT MATERIAL CONFLICTS WITH CONSTRUCTION ENVELOPE
24	VEITCHIA MERRILLI	CHRISTMAS PALM	8"	14'	6'	RELOCATE	LOCATION OF PLANT MATERIAL CONFLICTS WITH CONSTRUCTION ENVELOPE
25	VEITCHIA MERRILLI	CHRISTMAS PALM	8"	18'	6'	RELOCATE	LOCATION OF PLANT MATERIAL CONFLICTS WITH CONSTRUCTION ENVELOPE
29	SABAL DOMINGENSIS	HISPANIOLA PALM	12"	16'	16'	RELOCATE	LOCATION OF PLANT MATERIAL CONFLICTS WITH CONSTRUCTION ENVELOPE
30	THRINAX RADIATA	THATCH PALM	6"	16'	6'	RELOCATE	LOCATION OF PLANT MATERIAL CONFLICTS WITH CONSTRUCTION ENVELOPE
31	THRINAX RADIATA	THATCH PALM	6"	18'	6'	RELOCATE	LOCATION OF PLANT MATERIAL CONFLICTS WITH CONSTRUCTION ENVELOPE
32	VEITCHIA MERRILLI - DOUBLE	CHRISTMAS PALM	8"	14'	6'	RELOCATE	LOCATION OF PLANT MATERIAL CONFLICTS WITH CONSTRUCTION ENVELOPE
33	VEITCHIA MERRILLI - TRIPLE	CHRISTMAS PALM	8"	14'	6'	RELOCATE	LOCATION OF PLANT MATERIAL CONFLICTS WITH CONSTRUCTION ENVELOPE

A TOTAL OF **18 PALMS** ARE SPECIFIED TO BE RELOCATED TO TEMPORARY HOLDING PEN. GENERAL CONTRACTOR AND LANDSCAPE CONTRACTOR TO COORDINATE PHASING OF PALMS BACK ON-SITE.

TREES SPECIFIED TO BE REMOVED (CITY OF KEY WEST PROTECTED TREES)

13	ALBIZIA LEBBECK	WOMAN'S TONGUE TREE	28"	35'	35'	REMOVE	PLANT CONFLICTS WITH CONSTRUCTION ENVELOPE
13A	VEITCHIA MERRILLII	CHRISTMAS PALM	8'	14'	8'	REMOVE	PLANT CONFLICTS WITH CONSTRUCTION ENVELOPE
18	MELICOCOCCUS BIJUGATUS	SPANISH LIME	4"	16'	12'	REMOVE	PLANT CONFLICTS WITH CONSTRUCTION ENVELOPE
22	PLUMERIA SP.	FRANGIPANI	6"	24'	16'	REMOVE	PLANT CONFLICTS WITH CONSTRUCTION ENVELOPE

A TOTAL OF **3 TREES** AND **1 PALM** ARE SPECIFIED FOR REMOVAL. THE PROPOSED PLANTING PLAN SPECIFIES A TOTAL OF (X) NATIVE PALMS AND (X) NATIVE TREES TO MITIGATED FOR REMOVAL OF ABOVE SPECIMENS. REFER TO SHEETS L700 - L705 FOR PROPOSED SPECIES, SPECIFICATIONS, LAYOUT, AND GENERAL PLANTING DETAILS.

TREES SPECIFIED TO BE REMOVED (CITY OF KEY WEST UNPROTECTED TREES - DO NOT REQUIRE PERMIT FOR REMOVAL OR MITIGATION)

3	DYPSIS LUTESCENS	ARECA PALM	MS	14'	6'	REMOVE	PLANT MATERIAL IS UNDESIRABLE
7	DYPSIS LUTESCENS	ARECA PALM	MS	8'	4'	REMOVE	PLANT MATERIAL IS UNDESIRABLE
14	DYPSIS LUTESCENS	ARECA PALM	MS	16'	8'	REMOVE	PLANT MATERIAL IS UNDESIRABLE
16	CARYOTA MITIS	FISH TAIL PALM	8"	28'	8'	REMOVE	PLANT MATERIAL IS UNDESIRABLE
26	DYPSIS LUTESCENS	ARECA PALM	MS	18'	12'	REMOVE	PLANT MATERIAL IS UNDESIRABLE
27	DYPSIS LUTESCENS	ARECA PALM	MS	18'	12'	REMOVE	PLANT MATERIAL IS UNDESIRABLE
28	DYPSIS LUTESCENS	ARECA PALM	MS	18'	12'	REMOVE	PLANT MATERIAL IS UNDESIRABLE

A TOTAL OF **7 UNPROTECTED** PALMS TO BE REMOVED FROM SITE

SEAL (S TYLER NIELSEN - L6667067)

NOT FOR CONSTRUCTION

TREE DISPOSITION NOTES

DATE	ISSUE
07/21/2014	TREE COM. REVIEW
08/20/2014	TREE COM. REVIEW
02/02/2015	TREE COM. REVIEW

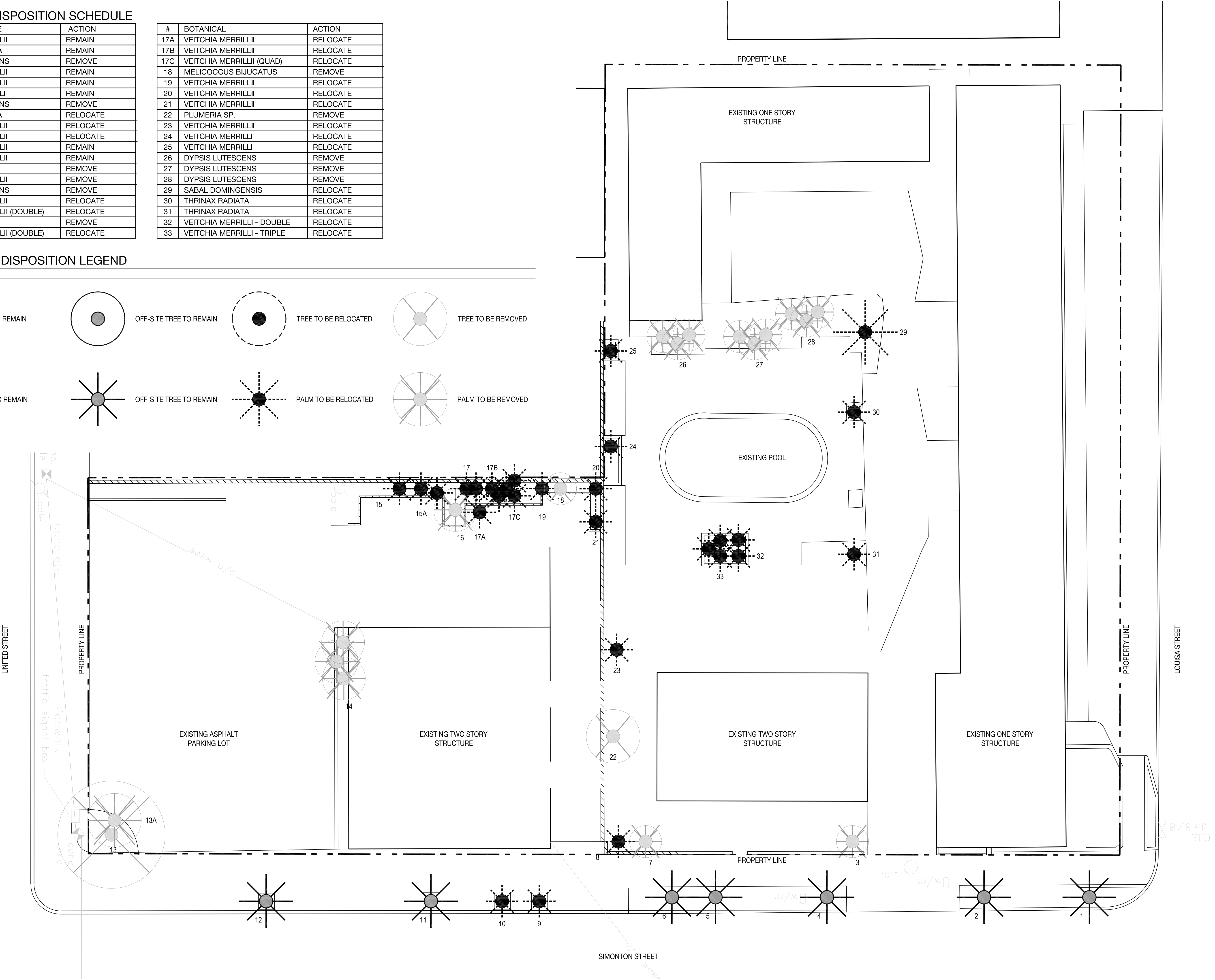
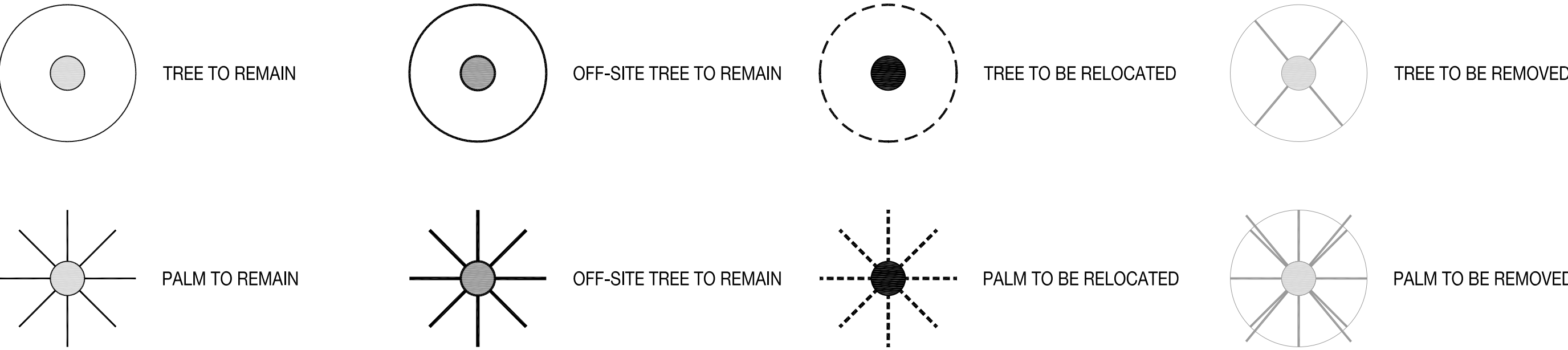
H2O SUITES
1212 & 1222 SIMONTON STREET | KEY WEST, FLORIDA 33040

TREE & PALM DISPOSITION SCHEDULE

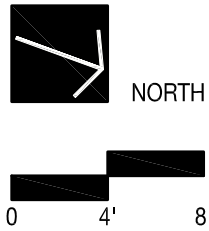
#	BOTANICAL NAME	ACTION
1	VEITCHIA MERRILLII	REMAIN
2	THRINAX RADIATA	REMAIN
3	DYPsis LUTESCENS	REMOVE
4	VEITCHIA MERRILLII	REMAIN
5	VEITCHIA MERRILLII	REMAIN
6	VEITCHIA MERRILLII	REMAIN
7	DYPsis LUTESCENS	REMOVE
8	THRINAX RADIATA	RELOCATE
9	VEITCHIA MERRILLII	RELOCATE
10	VEITCHIA MERRILLII	RELOCATE
11	VEITCHIA MERRILLII	REMAIN
12	VEITCHIA MERRILLII	REMAIN
13	ALBIZIA LEBBECK	REMOVE
13A	VEITCHIA MERRILLII	REMOVE
14	DYPsis LUTESCENS	REMOVE
15	VEITCHIA MERRILLII	RELOCATE
15A	VEITCHIA MERRILLII (DOUBLE)	RELOCATE
16	CARYOTA MITIS	REMOVE
17	VEITCHIA MERRILLII (DOUBLE)	RELOCATE

#	BOTANICAL	ACTION
17A	VEITCHIA MERRILLII	RELOCATE
17B	VEITCHIA MERRILLII	RELOCATE
17C	VEITCHIA MERRILLII (QUAD)	RELOCATE
18	MELICOCCLUS BIJUGATUS	REMOVE
19	VEITCHIA MERRILLII	RELOCATE
20	VEITCHIA MERRILLII	RELOCATE
21	VEITCHIA MERRILLII	RELOCATE
22	PLUMERIA SP.	REMOVE
23	VEITCHIA MERRILLII	RELOCATE
24	VEITCHIA MERRILLII	RELOCATE
25	VEITCHIA MERRILLII	RELOCATE
26	DYPsis LUTESCENS	REMOVE
27	DYPsis LUTESCENS	REMOVE
28	DYPsis LUTESCENS	REMOVE
29	SABAL DOMINGENSIS	RELOCATE
30	THRINAX RADIATA	RELOCATE
31	THRINAX RADIATA	RELOCATE
32	VEITCHIA MERRILLII - DOUBLE	RELOCATE
33	VEITCHIA MERRILLII - TRIPLE	RELOCATE

TREES & PALM DISPOSITION LEGEND

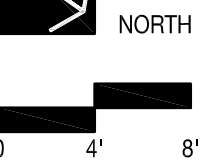


TREE DISPOSITION PLAN	
DATE	ISSUE
07/21/2014	TREE COM. REVIEW
08/20/2014	TREE COM. REVIEW
02/02/2015	TREE COM. REVIEW

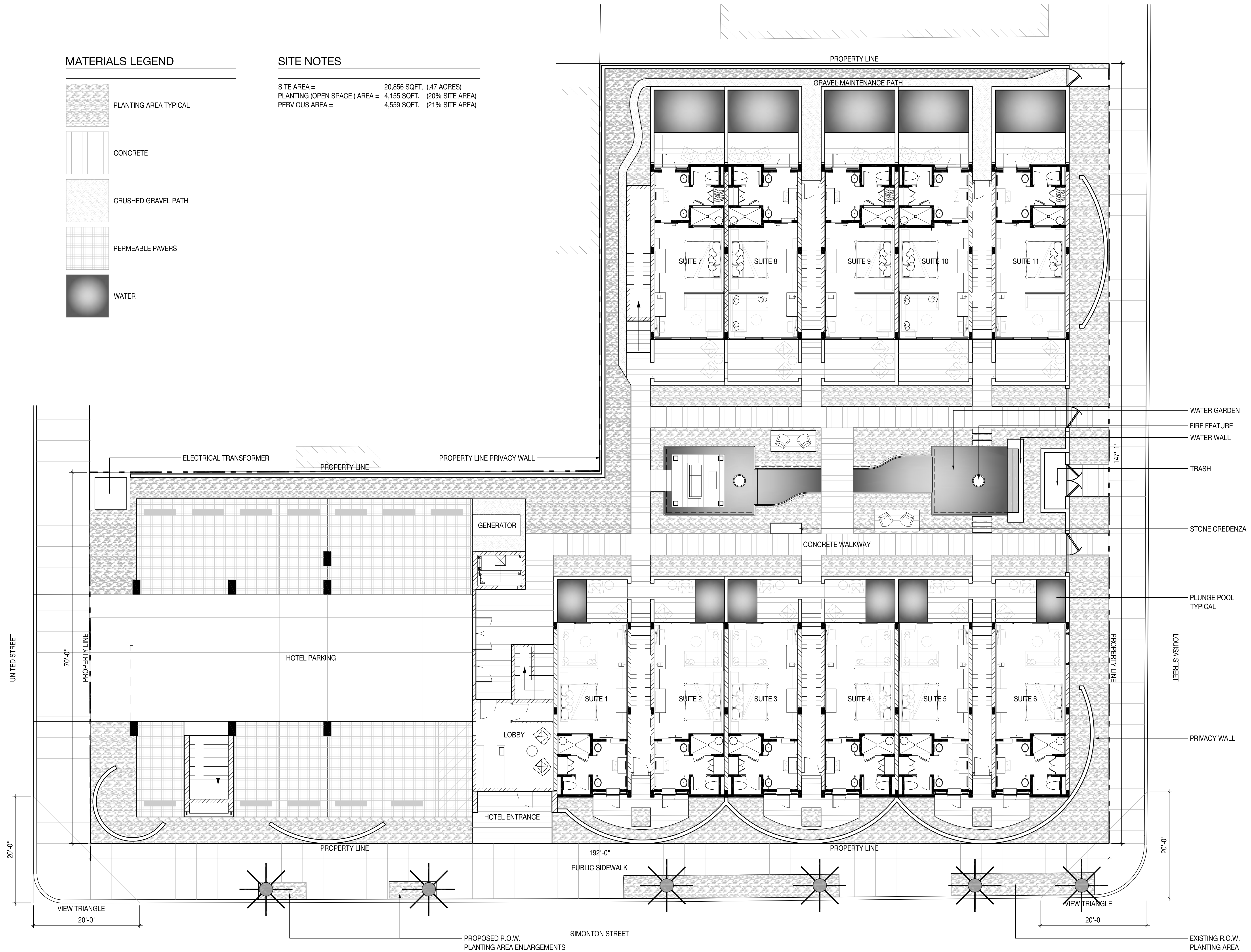


1212 & 1222 SIMON TON STREET | KEY WEST, FLORIDA 33040

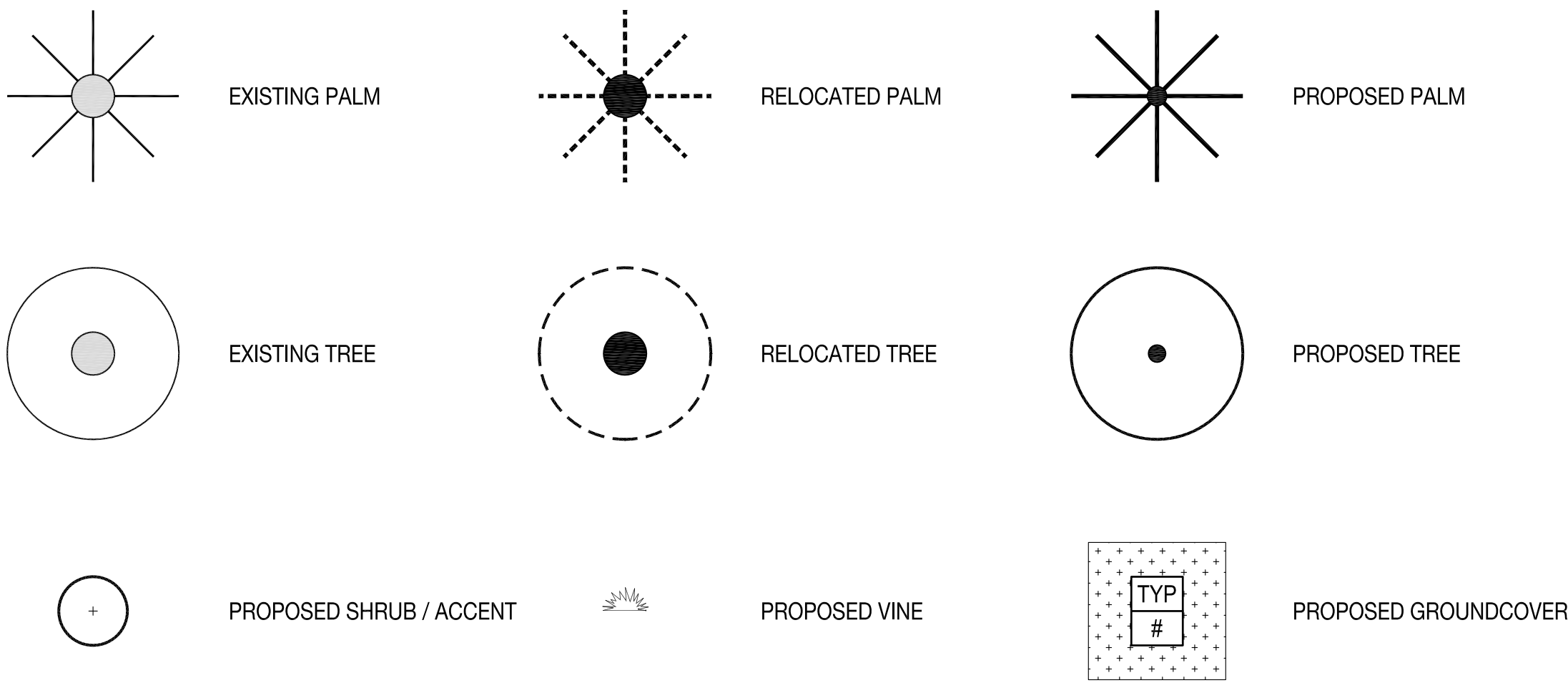
MATERIALS PLAN	
DATE	ISSUE
07/21/2014	TREE COM. REVIEW
08/20/2014	TREE COM. REVIEW
02/02/2015	TREE COM. REVIEW



L301

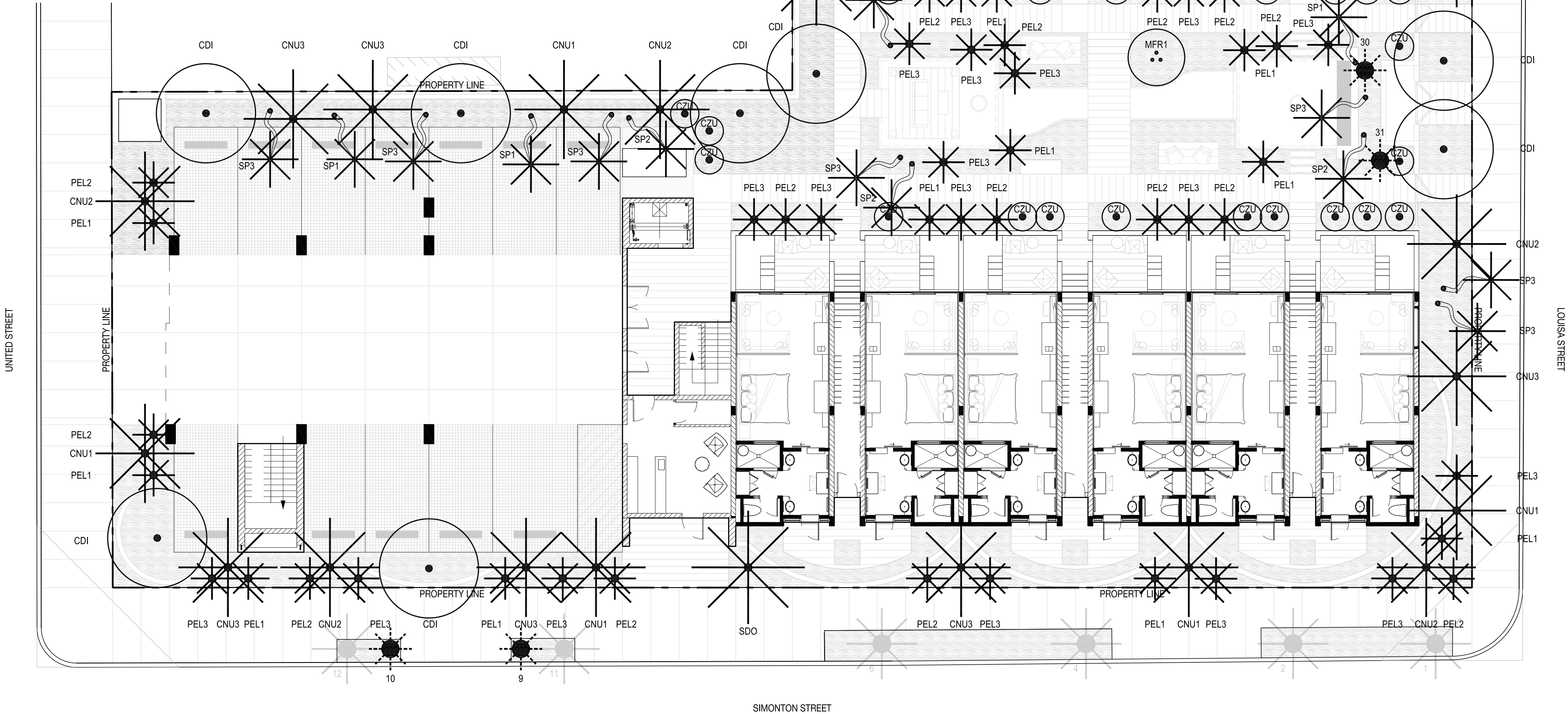


PLANTING LEGEND



PLANTING SCHEDULE

CDI	COCCOLOBA DIVERSIFOLIA
MF1	MYRCIANTHES FRAGRANS
CZU	CALYPTRANTHES ZUZYGIUM
CNU1	COCOS NUCIFERA
CNU2	COCOS NUCIFERA
CNU3	COCOS NUCIFERA
PEL1	PTYCHOSPERMA ELEGANS
PEL2	PTYCHOSPERMA ELEGANS
PEL3	PTYCHOSPERMA ELEGANS
SDO	SABAL DOMINGENSIS
SP1	SABAL PALMETTO
SP2	SABAL PALMETTO
SP3	SABAL PALMETTO
8	THRINAX RADIATA
9	VEITCHIA MERRILLII
10	VEITCHIA MERRILLII
15	VEITCHIA MERRILLII
15A	VEITCHIA MERRILLII (DOUBLE)
17	VEITCHIA MERRILLII (DOUBLE)
17A	VEITCHIA MERRILLII
17B	VEITCHIA MERRILLII
17C	VEITCHIA MERRILLII (QUAD)
19	VEITCHIA MERRILLII
20	VEITCHIA MERRILLII
21	VEITCHIA MERRILLII
23	VEITCHIA MERRILLII
24	VEITCHIA MERRILLII
25	VEITCHIA MERRILLII
29	SABAL DOMINGENSIS
30	THRINAX RADIATA
31	THRINAX RADIATA
32	VEITCHIA MERRILLII - DOUBLE
33	VEITCHIA MERRILLII - TRIPLE



TREE & PALM PLANTING PLAN

DATE	ISSUE
07/21/2014	TREE COM. REVIEW
08/20/2014	TREE COM. REVIEW
02/02/2015	TREE COM. REVIEW

