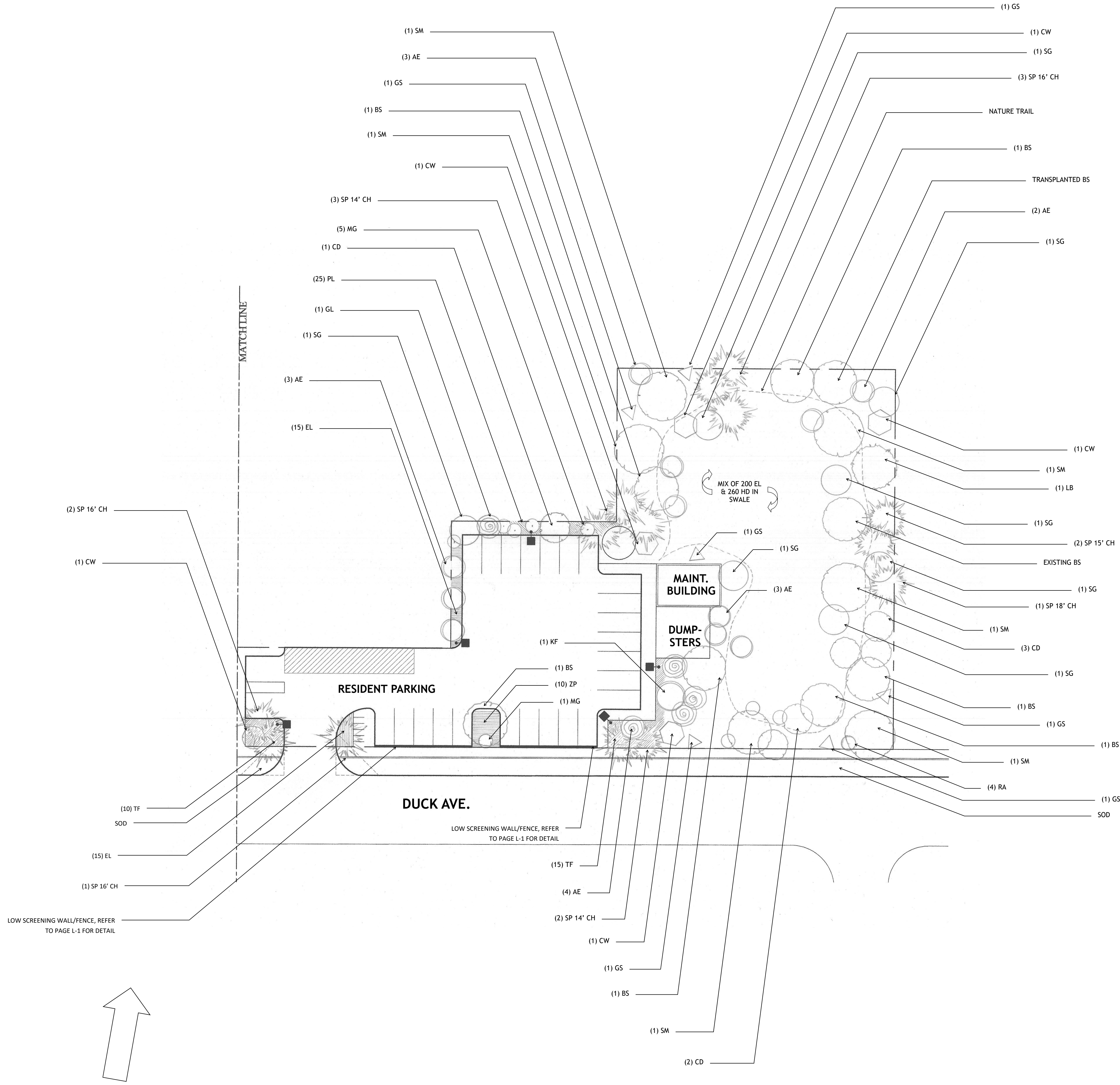


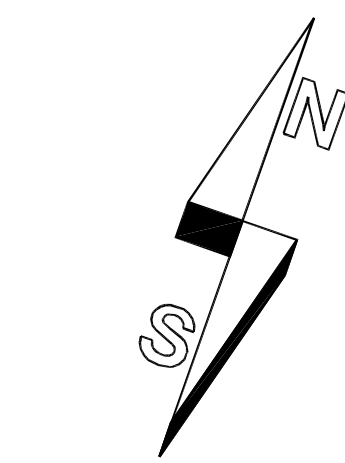
APRIL 2016 LANDSCAPE PLAN 1"=20'

CARL GILLEY
LANDSCAPE
DESIGN
1207 GRINNELL STREET • KEY WEST • FLORIDA • 33040
CARL GILLEY LANDSCAPE DESIGN • C O M
TELEPHONE • 305-304-1032 • THRAINVINCA40L.COM

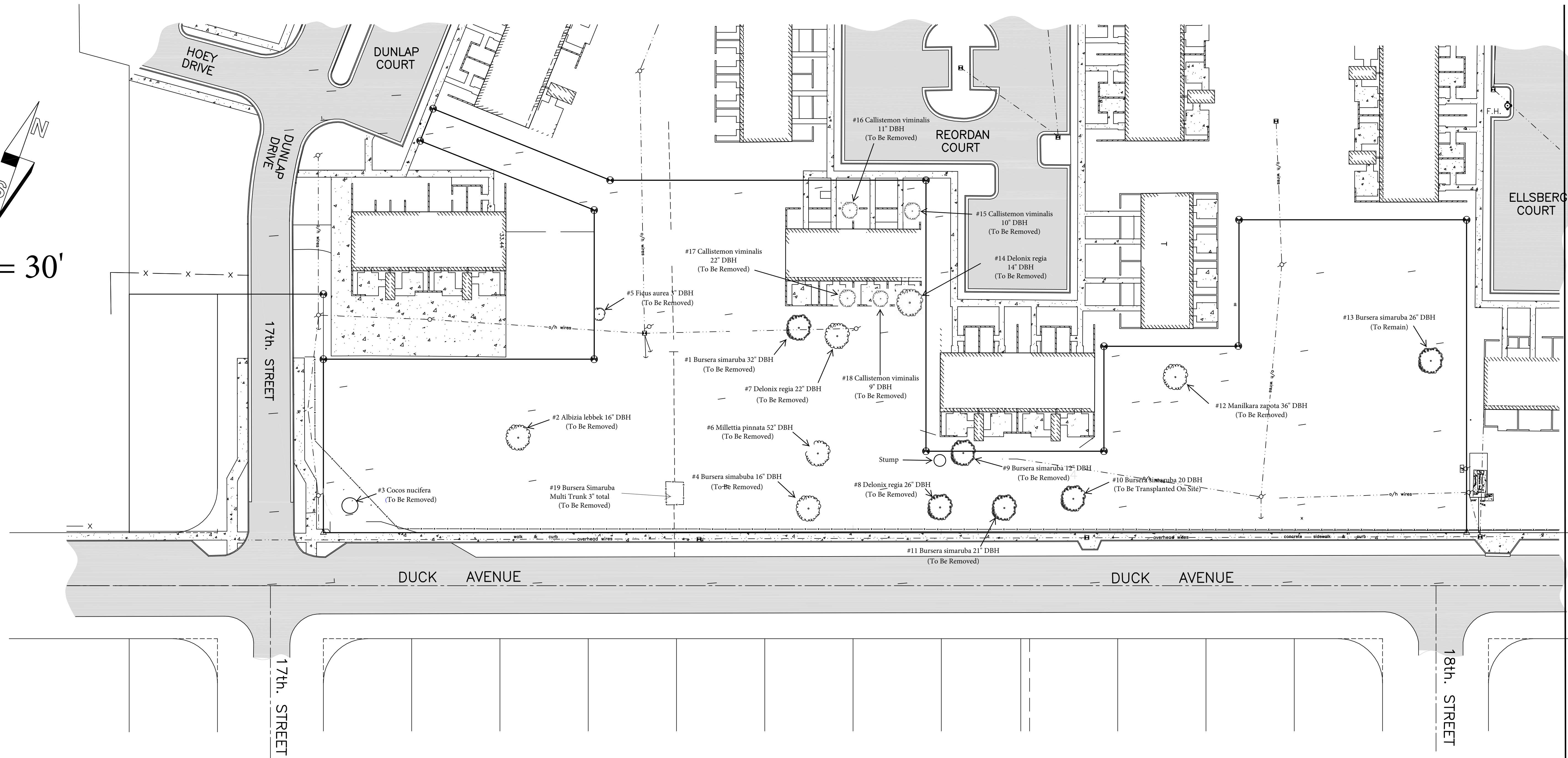
POINCIANA GARDENS L-2

1664 DUNLAP DRIVE / KEY WEST / FLORIDA





1" = 30'



Existing Material List						
#	Qty.	Plant	Size	Native	Regulated	Request
#1	1	Bursera simaruba	32" DBH	Y	Y	Remove
#2	1	Albizia lebbek	16" DBH	N	N	Remove
#3	1	Cocos nucifera	N/A	N	Y	Remove
#4	1	Bursera simaruba	16" DBH	Y	Y	Remove
#5	1	Ficus aurea	3" DBH	Y	Y	Remove
#6	1	Milletia pinnata	52" DBH	N	Y	Remove
#7	1	Delonix regia	22" DBH	N	Y	Remove
#8	1	Delonix regia	26" DBH	N	Y	Remove
#9	1	Bursera simaruba	12" DBH	Y	Y	Remove
#10	1	Bursera simaruba	20" DBH	Y	Y	Transplant
#11	1	Bursera simaruba	21" DBH	Y	Y	Remove
#12	1	Manilkara zapota	36" DBH	Y	Y	Remove
#13	1	Bursera simaruba	26" DBH	Y	Y	Remain
#14	1	Delonix regia	14" DBH	Y	Y	Remove
#15	1	Callistemon viminalis	10" DBH	Y	Y	Remove
#16	1	Callistemon viminalis	11" DBH	Y	Y	Remove
#17	1	Callistemon viminalis	22" DBH	Y	Y	Remove
#18	1	Callistemon viminalis	9" DBH	Y	Y	Remove
#19	1	Bursera simaruba	3" Multi	Y	Y	Remove

EXISTING VEGETATION PLAN

1. ALL SCHINUS TEREBINTHIFOLIUS (BRAZILIAN PEPPER) & LEUCAENA LEUCOCEPHALA (LEAD TREE) SHALL BE REMOVED FROM THE POINCIANA HOUSING SITE.

2. NEIGHBORING TREES, PALMS & ROOTS TO BE PROTECTED WITH SOLID BARRIERS

TREE/PALM PHOTOS



EXISTING PLANT SURVEY FEBRUARY 2016

POINCIANA GARDENS

SENIOR HOUSING PROJECT
1664 DUNLAP DR. KEY WEST FLORIDA

CARL GILLEY
LANDSCAPE
DESIGN
1207 GRINNELL STREET-KEY WEST-FLORIDA- 33040
CARL GILLEY LANDSCAPE DESIGN, C O M
TELEPHONE: 305-309-1032-THIRIVING4U.COM