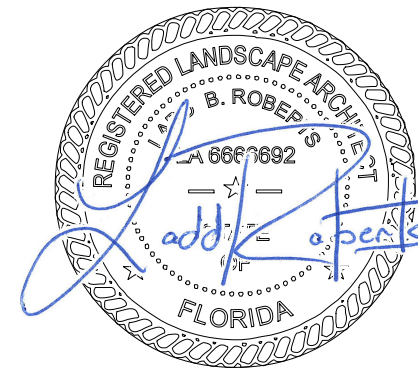


SHEET LEGEND

- PP-01: MASTER PLAN
- PP-02: TREE IMPACT PLAN (WEST SIDE)
- PP-03: TREE IMPACT PLAN (EAST SIDE)
- PP-04: CONCEPTUAL PLANTING PLAN (WEST SIDE)
- PP-05: CONCEPTUAL PLANTING PLAN (EAST SIDE)
- PP-06: TREE TRANSPLANTATION & PROTECTION DETAILS, TREE STAGING PLAN

SUNSET MARINA  
KEY WEST , FLORIDA



Mitchell Planning & Design, Inc.  
15450 SE 103rd Place Road  
Ocklawaha, Florida 32179  
352.288.0401/305.509.0966  
mitchellplanningdesign@gmail.com

PROPOSED PLANT PALLETTE				
TREES & PALMS				
ID	Quantity	Latin Name	Common Name	Scheduled Size
BS	19	Bursera simaruba	Gumbo Limbo	10-12", PH
CD	14	Coccoloba diversifolia	Pigeon Plum	12-14", PH, Fla #1
CE	7	Conocarpus erectus	Green Buttonwood	8-10", 2" DBH min., TF
CO	7	Chrysophyllum oliviforme	Satinleaf	12-14" PH., TF
LL	4	Lysitoma latissilqua	Wild Tamarind	FG, 12-14" PH
MFSS	41	Myrcianthes acastrans var.	Simpson Stopper	FG, 8-10", TF
PE db	5	Ptychosperma elegans	Alexander Palm	14"-16" PH, db
RP	1	Rovestonia regia	Royal Palm	14" CT, 24 OA, 20" DBH
SG	4	Simarouba glauca	Paradise Tree	30 gal, 10-12" Min
SP	16	Sabal Palmetto	Sabal Palm	18-24" OA
SS	3	Senna surattensis	Scrambled Egg Tree	10-12", FG, STD
THR	10	Thrinax radiata	Florida Thatch Palm	Single 8-10' OA
SHRUBS				
ID	Quantity	Latin Name	Common Name	Scheduled Size
BL	29	Byrsonima lucida	Locust Berry	3" PH
CAM	44	Carrissa macrocarpa	Natal Plum	3 gal, 14 x 14"
CES3	25	Conocarpus erectus var. ser	Silver Buttonwood	3 gal, full, 36" OA
CI	232	Chrysobalanus icaco	Cocoplum	7 gal, heavy
FM	25	Ficus microcarpa "Green Is	Green Island Ficus	3 gal, 12-15", full
HPC	33	Hamelia patens "Compacta"	Dwarf Firebush	3 gal, 18-24", full
PN	10	Psychotria nervosa	Wild Coffee	3 gal, 18-24", full, shade
SRSS	3	Serenoa repens "Silver Saw	Silver Saw Palmetto	7 gal., 16-20"
TF	13	Tripsacum floridanum	Dwf Fakahatchee Grass	3 gal.,
ZF	3	Zamia furfuracea	Cardboard Palm	7 gal
ZP	17	Zamia pulmia	Coontie	3 gal., 10-14" Full

SEC. 108-346 to 353 OPEN SPACE, SCREENING, AND BUFFERS			
Open Sapce - Sec. 108-346 (b)			
Open Space: 35% Minimum (Residential) 20% (Nonresidential)	Required	Provided	Percentage
Site Area:	194,172 s.f.		
Landscape areas: Residential Use 82% Nonresidential Use 18%	62,960 s.f.	78,985 s.f.	40.60%
Mangrove Areas:	100%	19,266 s.f.	10%
Total Open Space		98,251 s.f.	50.60%
Required Screening - Sec. 108-347 (b,c,d)			
Buffer: N/W Property Line (KNOTS ) - Medium Impact			
Class D, 400 LF, 20 to 35' wide, 75 PU/100 LF			
400 /100 = 4 x 75 = 300 PU			
	Total Plants Provided	x Plant Units	PU Provided
Canopy Trees	24	10	240
Ornamental Trees	18	5	90
Shrubs	50	1	50
Total Plant Units Provided Northwest Property Line			380
Buffer: West Property Line (County Driveway) - Medium Impact			
Class D, 360 LF, 10 to 19.99' wide, 112 PU/100 LF			
360 /100 = 3.6 x 112 = 403 PU			
	Total Plants Provided	x Plant Units	PU Provided
Canopy Trees	35	10	350
Ornamental Trees	8	5	40
Shrubs	71	1	71
Total Plant Units Provided West Property Line			461
Buffer: South Property Line (County Driveway) Medium Impact			
Class D, 157 LF, 10 to 19.99' wide, 112 PU/100 LF			
157 /100 = 1.57 x 112 = 176 PU			
	Total Plants Provided	x Plant Units	PU Provided
Canopy Trees	12	10	120
Ornamental Trees	5	5	25
Shrubs	38	1	38
Total Plant Units Provided South Property Line			183

SEC. 108-411 to 416 MINIMUM LANDSCAPE REQUIREMENTS			
Open Sapce - Sec. 108-412(a)			
Site Area: 194,172 s.f. x 20% Minimum Area od Building Site	S/F Required 38,834 s.f.	Provided	Percentage 20%
Landscape Area:		74,010 s.f.	48%
Mangrove Areas:		19,266 s.f.	10%
Total:		93,276 s.f.	51.00%
Minimum Native Plant Requirement - Sec. 108-412(b)			
Required: 70%	Total Plants Provided	Percentage	
Native Plants:	584	88%	
Exotic Plants:	77	12%	
Total Plants:	661	100%	
Minimum Street Frontage Right of Way - Sec. 108-413: NOT APPLICABLE			
Interior Parking Lot Landscape Areas - Sec. 108-414			
Parking Lot Minimum Landscape Area = 20%	Required	Provided	
32,940 s.f. Parking Lot Paved Areas x 20%:	6,588 s.f.	5,613 s.f.	Waiver Requested 85% of Requirement Provided
6,588 s.f./100 s.f.:	66 Trees	59 Trees	
Perimeter Parking Lot Landscape Areas - Sec. 108-415			
Building Site 20,000 - 50,000 s.f. 7.5' Permitter Parking Lot Landscape Area			
1,046 LF Perimeter	Required	Provided	Waiver to the 7.5' width requested, cannot comply in all locations
Canopy/Shade Tree (1 per 35 LF)	30	32	
Shrubs (10 per 35 L.F.)	300	317	
Non-vehicular Open Space (NOS) Requirements- Sec. 108-416			
Percent of Site in NOS is less than 30% NOS Requires 4 trees/2,000 s.f NOS			
8.2 % or 15,890 s.f. of Site is NOS			
4 trees x 7.9	Total Trees Required	Trees Provided	
	32	36	

MASTER PLAN

SCALE: 1"=40'

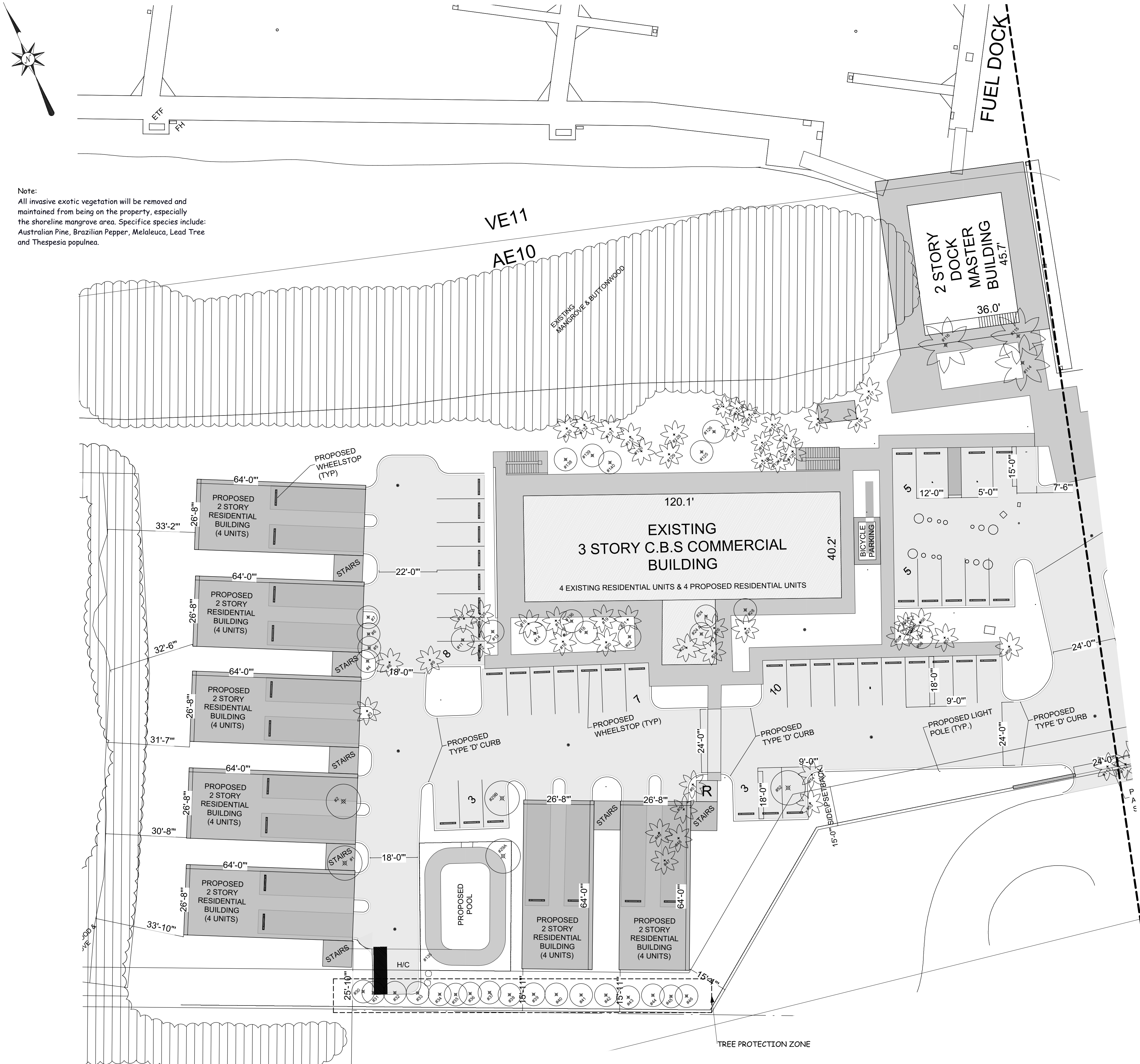
Revisions:

04.25.16:	Revise Existing Trees per City Direction

Date:	02.15.16
Scale:	As Noted
File:	16-FO-002
Drawn:	BM
Sheet:	

PP:01





Note:  
All invasive exotic vegetation will be removed and maintained from being on the property, especially the shoreline mangrove area. Specifice species include: Australian Pine, Brazilian Pepper, Melaleuca, Lead Tree and Thespesia populnea.

TREE IMPACT PLAN - WEST SIDE

SCALE: 1"=20'

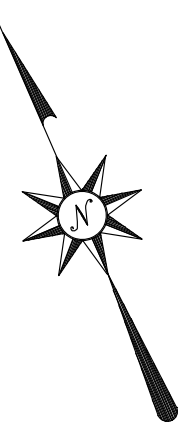
EXISTING TREE AND PALM TO REMOVE SCHEDULE					
NUMBER	BOTANICAL NAME	COMMON NAME	HEIGHT	SPREAD	CALIPER
1	Bursaria sinuata	Gumbo Limbo	15' to 20'	15' to 20'	9"
2	Bursaria sinuata	Gumbo Limbo	15' to 20'	15' to 20'	9"
11	Conocarpus erectus 'sericeus'	Silver Buttonwood	15' 0"	8' to 10'	8" (Multi)
52	Bursaria sinuata	Gumbo Limbo	15' to 20'	10' to 15'	6"
90	Melaleuca quinquenervia	Melaleuca	8' 0"	8' to 10'	Multi
108	Roystonea regia	Royal Palm	20' to 25'	15' to 20'	1' 0"

NOTES: Height, Spread, Caliper and location of vegetation has not been surveyed and is approximate. All vegetation scheduled to be transplanted within the Sunset Marina site. All invasive exotic vegetation not listed here will be removed from the site.

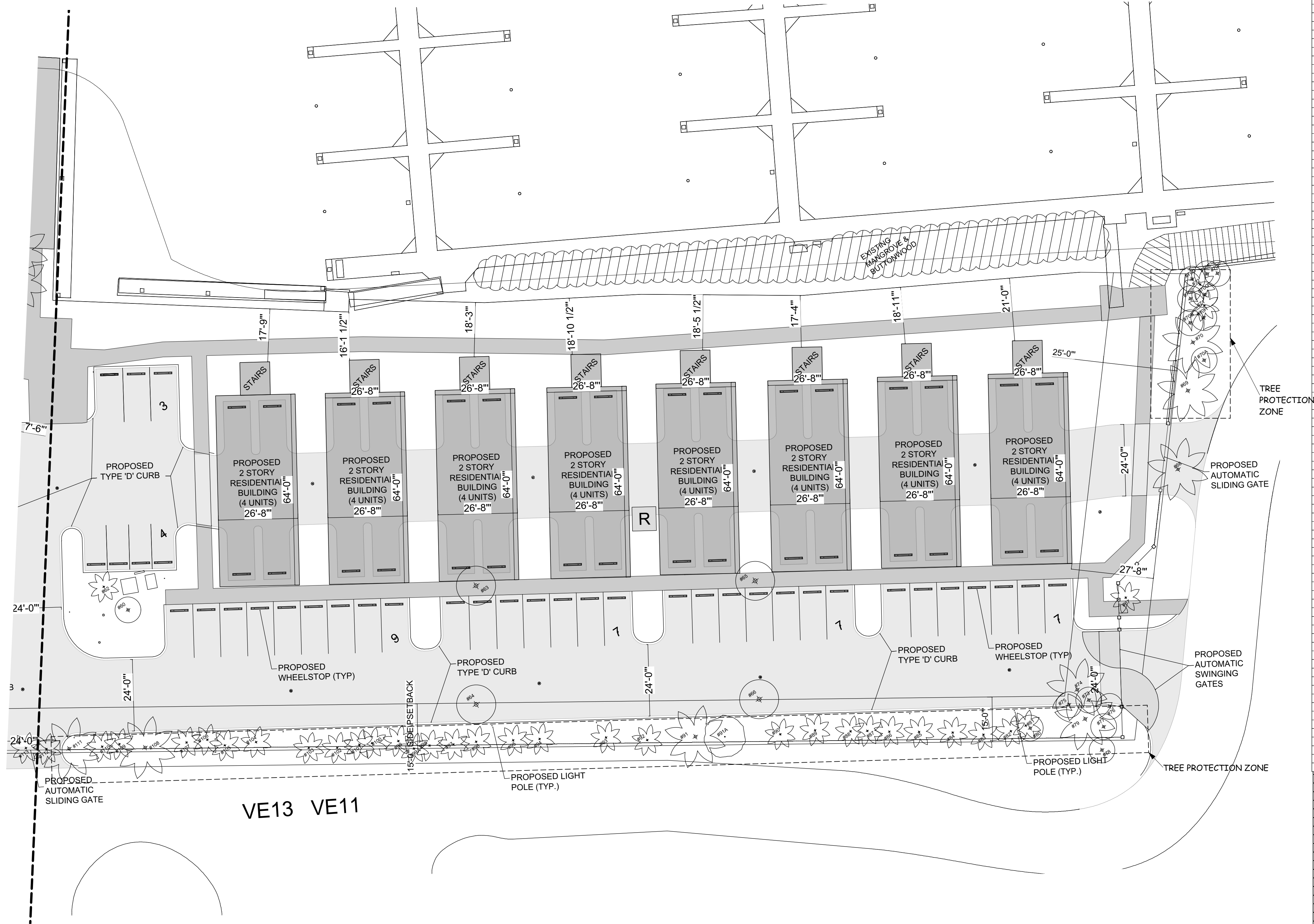
EXISTING TREE AND PALM TO REMAIN SCHEDULE							
NUMBER	BOTANICAL NAME	COMMON NAME	HEIGHT	SPREAD	CALIPER	CONDITION	STATUS
13	Clusia guttifera	Small Leaf Clusia	12' to 15'	10' to 15'	Multi	Good	Remain/Fertilize
14	Conocarpus erectus 'sericeus'	Silver Buttonwood	12' to 15'	8' to 10'	Multi	Good	Remain/Fertilize
15	Sabal palmetto	Sabal	20' to 25'	10' 0"	1' 0"	Good	Remain/Fertilize
16	Sabal palmetto	Sabal	20' to 25'	10' 0"	1' 0"	Good	Remain/Fertilize
17	Sabal palmetto	Sabal	20' to 25'	10' 0"	1' 0"	Good	Remain/Fertilize
18	Conocarpus erectus 'sericeus'	Silver Buttonwood	12' to 15'	8' to 10'	Multi	Good	Remain/Fertilize
19	Sabal palmetto	Sabal	20' to 25'	10' 0"	1' 0"	Good	Remain/Fertilize
20	Sabal palmetto	Sabal	20' to 25'	10' 0"	1' 0"	Good	Remain/Fertilize
21	Sabal palmetto	Sabal	20' to 25'	10' 0"	1' 0"	Good	Remain/Fertilize
22	Conocarpus erectus 'sericeus'	Silver Buttonwood	12' to 15'	8' to 10'	Multi	Good	Remain/Fertilize
23	Conocarpus erectus 'sericeus'	Silver Buttonwood	12' to 15'	8' to 10'	Multi	Good	Remain/Fertilize
24	Clusia guttifera	Small Leaf Clusia	12' to 15'	10' to 15'	Multi	Good	Remain/Fertilize
24A	Conocarpus erectus 'sericeus'	Silver Buttonwood	12' to 15'	8' to 10'	Multi	Good	Remain/Fertilize
25	Sabal palmetto	Sabal	20' to 25'	10' 0"	1' 0"	Good	Remain/Fertilize
26	Sabal palmetto	Sabal	20' to 25'	10' 0"	1' 0"	Good	Remain/Fertilize
27	Sabal palmetto	Sabal	20' to 25'	10' 0"	1' 0"	Good	Remain/Fertilize
30	Conocarpus erectus 'sericeus'	Silver Buttonwood	12' to 15'	8' to 10'	Multi	Good	Remain/Fertilize
34	Conocarpus erectus 'sericeus'	Silver Buttonwood	12' to 15'	8' to 10'	Multi	Good	Remain/Fertilize
35	Conocarpus erectus 'sericeus'	Silver Buttonwood	12' to 15'	8' to 10'	Multi	Good	Remain/Fertilize
36	Conocarpus erectus 'sericeus'	Silver Buttonwood	12' to 15'	8' to 10'	Multi	Good	Remain/Fertilize
37	Conocarpus erectus 'sericeus'	Silver Buttonwood	12' to 15'	8' to 10'	Multi	Good	Remain/Fertilize
38	Conocarpus erectus 'sericeus'	Silver Buttonwood	12' to 15'	8' to 10'	Multi	Good	Remain/Fertilize
39	Conocarpus erectus 'sericeus'	Silver Buttonwood	12' to 15'	8' to 10'	Multi	Good	Remain/Fertilize
40	Conocarpus erectus 'sericeus'	Silver Buttonwood	12' to 15'	8' to 10'	Multi	Good	Remain/Fertilize
41	Conocarpus erectus 'sericeus'	Silver Buttonwood	12' to 15'	8' to 10'	Multi	Good	Remain/Fertilize
42	Conocarpus erectus 'sericeus'	Silver Buttonwood	12' to 15'	8' to 10'	Multi	Good	Remain/Fertilize
43	Conocarpus erectus 'sericeus'	Silver Buttonwood	12' to 15'	8' to 10'	Multi	Good	Remain/Fertilize
44	Conocarpus erectus 'sericeus'	Silver Buttonwood	12' to 15'	8' to 10'	Multi	Good	Remain/Fertilize
45	Conocarpus erectus 'sericeus'	Silver Buttonwood	12' to 15'	8' to 10'	Multi	Good	Remain/Fertilize
46	Conocarpus erectus 'sericeus'	Silver Buttonwood	12' to 15'	8' to 10'	Multi	Good	Remain/Fertilize
55	Sabal palmetto	Sabal	20' to 25'	10' 0"	1' 0"	Good	Remain
55A	Thrinax radiata	Thatch Palm	5' 0A	3' 0"	3"	Good	Remain
55B	Thrinax radiata	Thatch Palm	5' 0A	3' 0"	3"	Good	Remain
56	Sabal palmetto	Sabal	20' to 25'	10' 0"	1' 0"	Good	Remain
57	Sabal palmetto	Sabal	20' to 25'	10' 0"	1' 0"	Good	Remain
58	Conocarpus erectus 'sericeus'	Silver Buttonwood	8' 0"	8' to 10'	Multi	Poor	Remain
59	Conocarpus erectus 'sericeus'	Silver Buttonwood	8' 0"	8' to 10'	Multi	Poor	Remain
60	Clusia guttifera	Small Leaf Clusia	15' to 20'	10' to 15'	Multi	Good	Remain
61 & 105	NO TREES						
62	Sabal palmetto	Sabal	20' to 25'	10' 0"	1' 0"	Good	Remain
69	Roystonea regia	Royal Palm	20' to 25'	15' to 20'	2' 0"	Good	Remain
70	Roystonea regia	Royal Palm	20' to 25'	15' to 20'	2' 0"	Good	Remain
70A	Talipariti fillicaudum	Mahoe Variegated	16' to 18'	12' to 16'	4"	Good	Remain - On ROW
70B	Talipariti fillicaudum	Mahoe Variegated	16' to 18'	12' to 16'	4"	Good	Remain - On ROW
70C	Clusia guttifera	Small Leaf Clusia	15' to 20'	10' to 15'	Multi	Good	Remain - On ROW
70D	Clusia guttifera	Small Leaf Clusia	15' to 20'	10' to 15'	Multi	Good	Remain - On ROW
70E	Conocarpus erectus 'sericeus'	Silver Buttonwood	8' 0"	8' to 10'	Multi	Good	Remain - On ROW
70F	Conocarpus erectus 'sericeus'	Silver Buttonwood	8' 0"	8' to 10'	Multi	Good	Remain - On ROW
70G	Clusia guttifera	Yellow Elder	15' to 20'	6' 0"	3"	Good	Remain - On ROW
70H	Clusia guttifera	Yellow Elder	15' to 20'	6' 0"	3"	Good	Remain - On ROW
71	Sabal palmetto	Sabal	20' to 25'	10' 0"	1' 0"	Good	Remain
72	Sabal palmetto	Sabal	20' to 25'	10' 0"	1' 0"	Good	Remain - On ROW
77	Conocarpus erectus 'sericeus'	Silver Buttonwood	8' 0"	8' to 10'	Multi	Poor	Remain - On ROW
78	Conocarpus erectus 'sericeus'	Silver Buttonwood	8' 0"	8' to 10'	Multi	Poor	Remain
79	Roystonea regia	Royal Palm	20' to 25'	15' to 20'	1' 0"	Good	Remain
81	Adonidia merrillii	Christmas Palm	10' to 15'	5' to 10'	Multi	Poor	Remain
82	Sabal palmetto	Sabal	20' to 25'	10' 0"	1' 0"	Good	Remain
83	Sabal palmetto	Sabal	20' to 25'	10' 0"	1' 0"	Good	Remain
84	Sabal palmetto	Sabal	20' to 25'	10' 0"	1' 0"	Good	Remain
85	Sabal palmetto	Sabal	20' to 25'	10' 0"	1' 0"	Good	Remain
86	Sabal palmetto	Sabal	20' to 25'	10' 0"	1' 0"	Good	Remain
87	Sabal palmetto	Sabal	20' to 25'	10' 0"	1' 0"	Good	Remain
88	Sabal palmetto	Sabal	20' to 25'	10' 0"	1' 0"	Good	Remain
89	Sabal palmetto	Sabal	20' to 25'	10' 0"	1' 0"	Good	Remain
90	Sabal palmetto	Sabal	20' to 25'	10' 0"	1' 0"	Good	Remain
91	Roystonea regia	Royal Palm	20' to 25'	15' to 20'	2' 0"	Good	Remain
91A	Simarouba glauca	Paradise Tree	16' to 18'	15' to 20'	2 1/2"	Good	Remain
92	Sabal palmetto	Sabal	20' to 25'	10' 0"	1' 0"	Good	Remain
93	Sabal palmetto	Sabal	20' to 25'	10' 0"	1' 0"	Good	Remain
94	Sabal palmetto	Sabal	20' to 25'	10' 0"	1' 0"	Good	Remain
95	Sabal palmetto	Sabal	20' to 25'	10' 0"	1' 0"	Good	Remain
96	Sabal palmetto	Sabal	20' to 25'	10' 0"	1' 0"	Good	Remain
97	Sabal palmetto	Sabal	20' to 25'	10' 0"	1' 0"	Good	Remain
98	Sabal palmetto	Sabal	20' to 25'	10' 0"	1' 0"	Good	Remain
99	Adonidia merrillii	Christmas Palm	10' to 15'	5' to 10'	Multi	Poor	Remain
99A	Adonidia merrillii	Christmas Palm	10' to 15'	5' to 10'	Double	Poor	Remain
100	Sabal palmetto	Sabal	20' to 25'	10' 0"	1' 0"	Good	Remain
101	Sabal palmetto	Sabal	20' to 25'	10' 0"	1' 0"	Good	Remain
102	Sabal palmetto	Sabal	20' to 25'	10' 0"	1' 0"	Good	Remain
103	Sabal palmetto	Sabal	20' to 25'	10' 0"	1' 0"	Good	Remain
104	Sabal palmetto	Sabal	20' to 25'	10' 0"	1' 0"	Good	Remain
106	Sabal palmetto	Sabal	20' to 25'	10' 0"	1' 0"	Good	Remain
107	Sabal palmetto	Sabal	20' to 25'	10' 0"	1' 0"	Good	Remain
108	Roystonea regia	Royal Palm	20' to 25'	15' to 20'	1' 0"	Poor	Remove
109	Adonidia merrillii	Christmas Palm	10' to 15'	5' to 10'	Multi	Poor	Remain
110	Adonidia merrillii	Christmas Palm	10' to 15'	5' to 10'	Multi	Poor	Remain
114	Roystonea regia	Royal Palm	20' to 25'	15' to 20'	1' 0"	Fair	Remove
115	Wodyetia bifurcata	Foxtail Palm	20' to 25'	15' to 20'	1' 0"	Good	Remain
116	Wodyetia bifurcata	Foxtail Palm	20' to 25'	15' to 20'	1' 0"	Good	Remain
117	Clusia guttifera	Small Leaf Clusia	18' to 24'	10' to 15'	Multi	Good	Remain
118	Clusia guttifera	Small Leaf Clusia	18' to 24'	10' to 15'	Multi	Good	Remain
119	Clusia guttifera	Small Leaf Clusia	18' to 24'	10' to 15'	Multi	Good	Remain
120	Clusia guttifera	Small Leaf Clusia	18' to 24'	10' to 15'	Multi	Good	Remain
121	Thrinax radiata	Thatch Palm	6' to 8'	4' to 6'	8"	Good	Remain
121A	Thrinax radiata	Thatch Palm	5' 0A	3' 0"	2 1/2"	Good	Remain
121B	Thrinax radiata	Thatch Palm	5' 0A	3' 0"	2 1/2"	Good	Remain
121C	Thrinax radiata	Thatch Palm	5' 0A	3' 0"	2 1/2"	Good	Remain
121D	Thrinax radiata	Thatch Palm	5' 0A	3' 0"	2 1/2"	Good	Remain
122	Thrinax radiata	Thatch Palm	6' to 8'	4' to 6'	8"	Good	Remain
123	Sabal palmetto	Sabal	20' to 25'	10' 0"	1' 0"	Good	Remain
124	Sabal palmetto	Sabal	20' to 25'	10' 0"	1' 0"	Good	Remain
125	Clusia guttifera	Small Leaf Clusia	10' to 15'	10' to 15'	Multi	Good	Remain
126	Clusia guttifera	Small Leaf Clusia	10' to 15'	10' to 15'	Multi	Good	Remain
127	Sabal palmetto	Sabal	20' to 25'	10' 0"	1' 0"	Good	Remain
128	Sabal palmetto	Sabal	20' to 25'	10' 0"	1' 0"	Good	Remain
129	Sabal palmetto	Sabal	20' to 25'	10' 0"	1' 0"	Good	Remain
130	Sabal palmetto	Sabal	20' to 25'	10' 0"	1' 0"	Good	Remain
131	Sabal palmetto	Sabal	20' to 25'	10' 0"	1' 0"	Good	Remain
132	Clusia guttifera	Small Leaf Clusia	15' to 20'	10' to 15'	Multi	Good	Remain
133	Sabal palmetto	Sabal	20' to 25'	10' 0"	1' 0"	Good	Remain
134	Clusia guttifera	Small Leaf Clusia	15' to 20'	10' to 15'	Multi	Good	Remain
136	Clusia guttifera	Small Leaf Clusia	15' to 20'	10' to 15'	Multi	Good	Remain
137	Cordia sebestena	White Geiger	8' to 12'	6' to 10'	Multi	Good	Remain
138	Clusia guttifera	Small Leaf Clusia	15' to 20'	10' to 15'	Multi	Good	Remain
139	Clusia guttifera	Small Leaf Clusia	15' to 20'	10' to 15'	Multi	Good	Remain
140	Suriana maritima	Bay Cedar	3' to 5'	4' 0"	SHrub	Good	Remain

EXISTING TREE AND PALM TO TRANSLANT ON SITE SCHEDULE							
NUMBER	BOTANICAL NAME	COMMON NAME	HEIGHT	SPREAD	CALIPER	CONDITION	STATUS
3	Sabal palmetto	Sabal	20' to 25'	10' 0"	1' 0"	Good	Transplant
4	Conocarpus erectus 'sericeus'	Silver Buttonwood	6' 0"	4' to 5'	Multi (Hedge)	Good	Transplant
5	Conocarpus erectus 'sericeus'	Silver Buttonwood	6' 0"	4' to 5'	Multi (Hedge)	Good	Transplant
6	Conocarpus erectus 'sericeus'	Silver Buttonwood	6' 0"	4' to 5'	Multi (Hedge)	Good	Transplant
7	Conocarpus erectus 'sericeus'	Silver Buttonwood	6' 0"	4' to 5'	Multi (Hedge)	Good	Transplant
8	Sabal palmetto	Sabal	20' to 25'	8' to 10'	1' 0"	Good	Transplant
9	Sabal palmetto	Sabal	20' to 25'	10' 0"	1' 0"	Good	Transplant
10	Sabal palmetto	Sabal	20' to 25'	10' 0"	1' 0"	Good	Transplant
12	Sabal palmetto	Sabal	20' to 25'	10' 0"	1' 0"	Good	Transplant
28	Conocarpus erectus 'sericeus'	Silver Buttonwood	20' to 25'	10' 0"	12' 0" (Multi)	Good	Transplant
29A	Bursaria sinuata	Gumbo Limbo	10' to 15'	10' to 15'	8"	Fair	Transplant
29B	Bursaria sinuata	Gumbo Limbo	8' to 12'	5' to 8'	6"	Fair	Transplant
31	Conocarpus erectus 'sericeus'	Silver Buttonwood	12' to 15'	8' to 10'	8" (Multi)	Good	Remain/Fertilize
32	Conocarpus erectus 'sericeus'	Silver Buttonwood	12' to 15'	8' to 10'	8" (Multi)	Good	Remain/Fertilize
33	Conocarpus erectus 'sericeus'	Silver Buttonwood	12' to 15'	8' to 10'	10" (Multi)	Good	Remain/Fertilize
47	Sabal palmetto	Sabal	20' to 25'	10' 0"	1' 0"	Good	Transplant
48	Sabal palmetto	Sabal	20' to 25'	10' 0"	1' 0"	Good	Transplant
49	Sabal palmetto	Sabal	20' to 25'	10' 0"	1' 0"	Good	Transplant
50	Sabal palmetto	Sabal	20' to 25'	10' 0"	1' 0"	Good	Transplant
51	Sabal palmetto	Sabal	20' to 25'	10' 0"	1' 0"	Good	Transplant
53	Sabal palmetto	Sabal	20' to 25'	10' 0"	1' 0"	Good	Transplant
54	Sabal palmetto	Sabal	20' to 25'	10' 0"	1' 0"	Good	Transplant
63	Bursaria sinuata	Gumbo Limbo	15' to 20'	10' to 15'	8"	Fair	Transplant
64	Bursaria sinuata	Gumbo Limbo	15' to 20'	10' to 15'	8"	Fair	Transplant
65	Bursaria sinuata	Gumbo Limbo	15' to 20'	10' to 15'	8"	Fair	Transplant
66	Bursaria sinuata	Gumbo Limbo	15' to 20'	10' to 15'	8"	Fair	Transplant
67	Felicia decurva	Japanese Fern Tree	15' to 20'	10' to 15'	9"	Good	Transplant
68	Roystonea regia	Royal Palm	20' to 25'	15' to 20'	2' 0"	Good	Transplant
73	Conocarpus erectus 'sericeus'	Silver Buttonwood	8' 0"	8' to 10'	12" (Multi)	Poor	Transplant
74	Roystonea regia	Royal Palm	20' to 25'	15' to 20'	1' 0"	Good	Transplant
75	Conocarpus erectus 'sericeus'	Silver Buttonwood	8' 0"	8' to 10'	12" (Multi)	Poor	Transplant
76	Conocarpus erectus 'sericeus'	Silver Buttonwood	8' 0"	8' to 10'	14" (Multi)	Poor	Transplant
111	Roystonea regia	Royal Palm	20' to 25'	15' to 20'	1' 0"	Good	Transplant
112	Adonidia merrillii	Christmas Palm	20' to 25'	10' 0"	1' 0"	Fair	Transplant
113	Adonidia merrillii	Christmas Palm	20' to 25'	10' 0"	1' 0"	Fair	Transplant
135	Thrinax radiata	Thatch Palm	6' to 8'	4' to 6'	8"	Good	Transplant





Note:  
All invasive exotic vegetation will be removed and maintained from being on the property, especially the shoreline mangrove area. Specific species include: Australian Pine, Brazilian Pepper, Melaleuca, Lead Tree and Thespesia populnea.



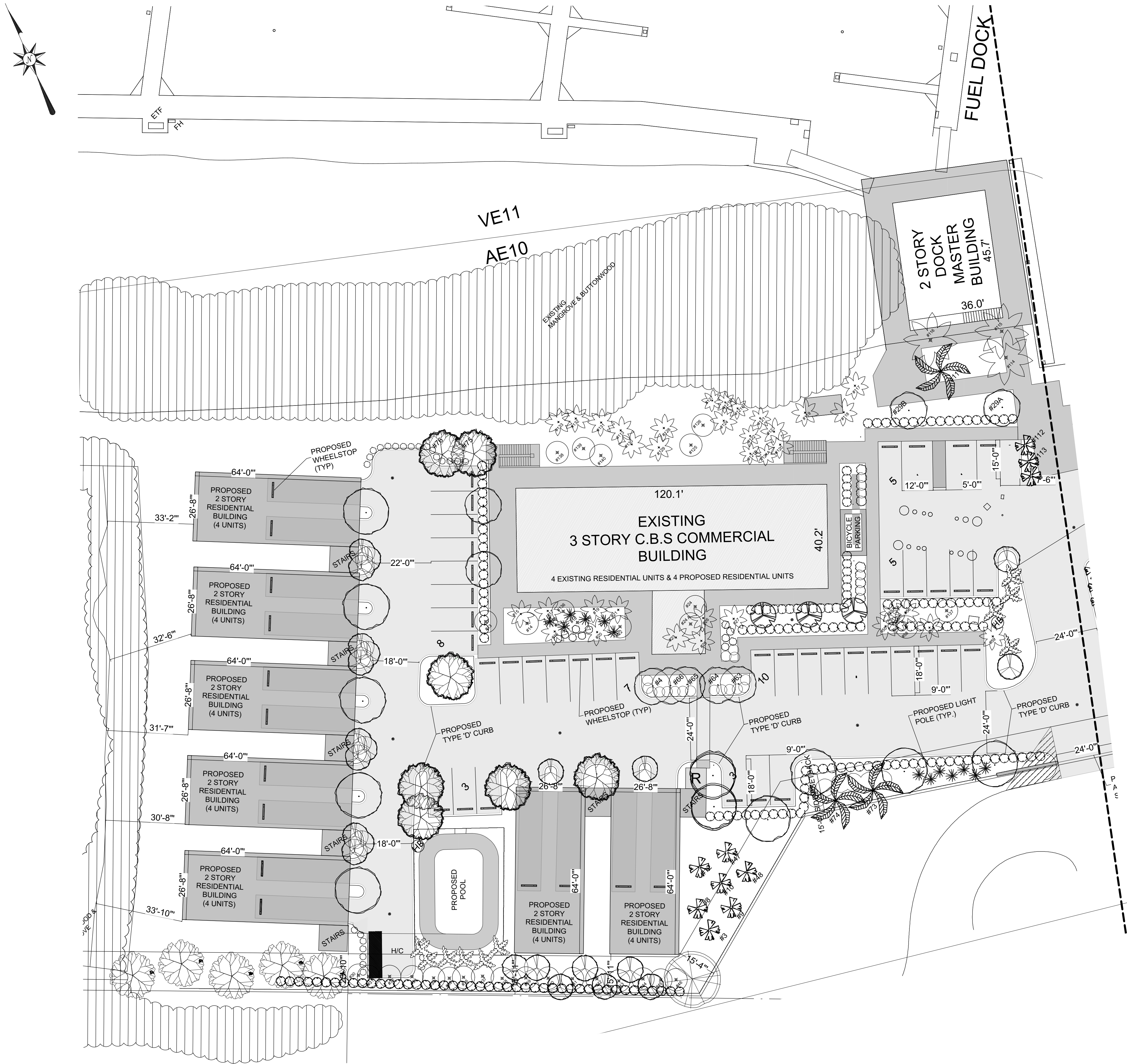
## TREE IMPACT PLAN - EAST SIDE

SCALE: 1"=20'

EXISTING TREE AND PALM TO REMOVE SCHEDULE					
NUMBER	BOTANICAL NAME	COMMON NAME	HEIGHT	SPREAD	CALIPER
1	Bursaria sinarube	Gumbo Limbo	15' to 20'	15' to 20'	9"
2	Bursaria sinarube	Gumbo Limbo	15' to 20'	15' to 20'	9"
11	Conocarpus erectus 'sericeus'	Silver Buttonwood	15' 0"	8' to 10'	8" (Multi)
52	Bursaria sinarube	Gumbo Limbo	15' to 20'	10' to 15'	6"
80	Melaleuca quinquenervia	Melaleuca	8' to 10'	8' to 10'	Multi
108	Roystonea regia	Royal Palm	20' to 25'	15' to 20'	1' 0"
NOTES: Height, Spread, Caliper and location of vegetation has not been surveyed and is approximate. All vegetation scheduled to be transplanted will be transplanted within the Sunset Marina site. All invasive exotic vegetation not listed here will be removed from the site.					

EXISTING TREE AND PALM TO REMAIN SCHEDULE							
NUMBER	BOTANICAL NAME	COMMON NAME	HEIGHT	SPREAD	CALIPER	CONDITION	STATUS
13	Clusia guttifera	Small Leaf Clusia	12' to 15'	10' to 15'	Multi	Good	Remain/Fertilize
14	Conocarpus erectus 'sericeus'	Silver Buttonwood	12' to 15'	8' to 10'	Multi	Good	Remain/Fertilize
15	Sabal palmetto	Sabal	20' to 25'	10' 0"	1' 0"	Good	Remain/Fertilize
16	Sabal palmetto	Sabal	20' to 25'	10' 0"	1' 0"	Good	Remain/Fertilize
17	Sabal palmetto	Sabal	20' to 25'	10' 0"	1' 0"	Good	Remain/Fertilize
18	Conocarpus erectus 'sericeus'	Silver Buttonwood	12' to 15'	8' to 10'	Multi	Good	Remain/Fertilize
19	Sabal palmetto	Sabal	20' to 25'	10' 0"	1' 0"	Good	Remain/Fertilize
20	Sabal palmetto	Sabal	20' to 25'	10' 0"	1' 0"	Good	Remain/Fertilize
21	Sabal palmetto	Sabal	20' to 25'	10' 0"	1' 0"	Good	Remain/Fertilize
22	Conocarpus erectus 'sericeus'	Silver Buttonwood	12' to 15'	8' to 10'	Multi	Good	Remain/Fertilize
23	Conocarpus erectus 'sericeus'	Silver Buttonwood	12' to 15'	8' to 10'	Multi	Good	Remain/Fertilize
24	Clusia guttifera	Small Leaf Clusia	12' to 15'	10' to 15'	Multi	Good	Remain/Fertilize
24A	Conocarpus erectus 'sericeus'	Silver Buttonwood	12' to 15'	8' to 10'	Multi	Good	Remain/Fertilize
25	Sabal palmetto	Sabal	20' to 25'	10' 0"	1' 0"	Good	Remain/Fertilize
26	Sabal palmetto	Sabal	20' to 25'	10' 0"	1' 0"	Good	Remain/Fertilize
27	Sabal palmetto	Sabal	20' to 25'	10' 0"	1' 0"	Good	Remain/Fertilize
30	Conocarpus erectus 'sericeus'	Silver Buttonwood	12' to 15'	8' to 10'	Multi	Good	Remain/Fertilize
34	Conocarpus erectus 'sericeus'	Silver Buttonwood	12' to 15'	8' to 10'	Multi	Good	Remain/Fertilize
35	Conocarpus erectus 'sericeus'	Silver Buttonwood	12' to 15'	8' to 10'	Multi	Good	Remain/Fertilize
36	Conocarpus erectus 'sericeus'	Silver Buttonwood	12' to 15'	8' to 10'	Multi	Good	Remain/Fertilize
37	Conocarpus erectus 'sericeus'	Silver Buttonwood	12' to 15'	8' to 10'	Multi	Good	Remain/Fertilize
38	Conocarpus erectus 'sericeus'	Silver Buttonwood	12' to 15'	8' to 10'	Multi	Good	Remain/Fertilize
39	Conocarpus erectus 'sericeus'	Silver Buttonwood	12' to 15'	8' to 10'	Multi	Good	Remain/Fertilize
40	Conocarpus erectus 'sericeus'	Silver Buttonwood	12' to 15'	8' to 10'	Multi	Good	Remain/Fertilize
41	Conocarpus erectus 'sericeus'	Silver Buttonwood	12' to 15'	8' to 10'	Multi	Good	Remain/Fertilize
42	Conocarpus erectus 'sericeus'	Silver Buttonwood	12' to 15'	8' to 10'	Multi	Good	Remain/Fertilize
43	Conocarpus erectus 'sericeus'	Silver Buttonwood	12' to 15'	8' to 10'	Multi	Good	Remain/Fertilize
44	Conocarpus erectus 'sericeus'	Silver Buttonwood	12' to 15'	8' to 10'	Multi	Good	Remain/Fertilize
45	Conocarpus erectus 'sericeus'	Silver Buttonwood	12' to 15'	8' to 10'	Multi	Good	Remain/Fertilize
46	Conocarpus erectus 'sericeus'	Silver Buttonwood	12' to 15'	8' to 10'	Multi	Good	Remain/Fertilize
55	Sabal palmetto	Sabal	20' to 25'	10' 0"	1' 0"	Good	Remain
55A	Thrinax radiata	5' OA	3' 0"	3' 0"	3"	Good	Remain
55B	Thrinax radiata	5' OA	3' 0"	3' 0"	3"	Good	Remain
56	Sabal palmetto	Sabal	20' to 25'	10' 0"	1' 0"	Good	Remain
57	Sabal palmetto	Sabal	20' to 25'	10' 0"	1' 0"	Good	Remain
58	Conocarpus erectus 'sericeus'	Silver Buttonwood	8' 0"	8' to 10'	Multi	Poor	Remain
59	Conocarpus erectus 'sericeus'	Silver Buttonwood	8' 0"	8' to 10'	Multi	Poor	Remain
60	Clusia guttifera	Small Leaf Clusia	15' to 20'	10' to 15'	Multi	Good	Remain
NO TREES							
62	Sabal palmetto	Sabal	20' to 25'	10' 0"	1' 0"	Good	Remain
69	Roystonea regia	Royal Palm	20' to 25'	15' to 20'	2' 0"	Good	Remain
70	Roystonea regia	Royal Palm	20' to 25'	15' to 20'	2' 0"	Good	Remain
70A	Tillandsia fillicum	Mahoe Variegated	16' to 18'	12' to 16'	4"	Good	Remain - On ROW
70B	Tillandsia fillicum	Mahoe Variegated	16' to 18'	12' to 16'	4"	Good	Remain - On ROW
70C	Clusia guttifera	Small Leaf Clusia	15' to 20'	10' to 15'	Multi	Good	Remain - On ROW
70D	Clusia guttifera	Small Leaf Clusia	15' to 20'	10' to 15'	Multi	Good	Remain - On ROW
70E	Conocarpus erectus 'sericeus'	Silver Buttonwood	8' 0"	8' to 10'	Multi	Good	Remain - On ROW
70F	Conocarpus erectus 'sericeus'	Silver Buttonwood	8' 0"	8' to 10'	Multi	Good	Remain - On ROW
70G	Clusia guttifera	Yellow Elder	15' to 20'	6' 0"	3"	Good	Remain - On ROW
70H	Clusia guttifera	Yellow Elder	15' to 20'	6' 0"	3"	Good	Remain - On ROW
71	Sabal palmetto	Sabal	20' to 25'	10' 0"	1' 0"	Good	Remain
72	Sabal palmetto	Sabal	20' to 25'	10' 0"	1' 0"	Good	Remain - On ROW
77	Conocarpus erectus 'sericeus'	Silver Buttonwood	8' 0"	8' to 10'	Multi	Poor	Remain - On ROW
78	Conocarpus erectus 'sericeus'	Silver Buttonwood	8' 0"	8' to 10'	Multi	Poor	Remain
79	Roystonea regia	Royal Palm	20' to 25'	15' to 20'	1' 0"	Good	Remain
81	Adonia merrilli	Christmas Palm	10' to 15'	5' to 10'	Multi	Poor	Remain
82	Sabal palmetto	Sabal	20' to 25'	10' 0"	1' 0"	Good	Remain
83	Sabal palmetto	Sabal	20' to 25'	10' 0"	1' 0"	Good	Remain
84	Sabal palmetto	Sabal	20' to 25'	10' 0"	1' 0"	Good	Remain
85	Sabal palmetto	Sabal	20' to 25'	10' 0"	1' 0"	Good	Remain
86	Sabal palmetto	Sabal	20' to 25'	10' 0"	1' 0"	Good	Remain
87	Sabal palmetto	Sabal	20' to 25'	10' 0"	1' 0"	Good	Remain
88	Sabal palmetto	Sabal	20' to 25'	10' 0"	1' 0"	Good	Remain
89	Sabal palmetto	Sabal	20' to 25'	10' 0"	1' 0"	Good	Remain
90	Sabal palmetto	Sabal	20' to 25'	10' 0"	1' 0"	Good	Remain
91	Roystonea regia	Royal Palm	20' to 25'	15' to 20'	2' 0"	Good	Remain
91A	Simarouba glauca	Paradise Tree	16' to 18'	15' to 20'	2 1/2"	Good	Remain
92	Sabal palmetto	Sabal	20' to 25'	10' 0"	1' 0"	Good	Remain
93	Sabal palmetto	Sabal	20' to 25'	10' 0"	1' 0"	Good	Remain
94	Sabal palmetto	Sabal	20' to 25'	10' 0"	1' 0"	Good	Remain
95	Sabal palmetto	Sabal	20' to 25'	10' 0"	1' 0"	Good	Remain
96	Sabal palmetto	Sabal	20' to 25'	10' 0"	1' 0"	Good	Remain
97	Sabal palmetto	Sabal	20' to 25'	10' 0"	1' 0"	Good	Remain
98	Sabal palmetto	Sabal	20' to 25'	10' 0"	1' 0"	Good	Remain
99	Adonia merrilli	Christmas Palm	10' to 15'	5' to 10'	Multi	Poor	Remain
99A	Adonia merrilli	Christmas Palm	10' to 15'	5' to 10'	Double	Poor	Remain
100	Sabal palmetto	Sabal	20' to 25'	10' 0"	1' 0"	Good	Remain
101	Sabal palmetto	Sabal	20' to 25'	10' 0"	1' 0"	Good	Remain
102	Sabal palmetto	Sabal	20' to 25'	10' 0"	1' 0"	Good	Remain
103	Sabal palmetto	Sabal	20' to 25'	10' 0"	1' 0"	Good	Remain
104	Sabal palmetto	Sabal	20' to 25'	10' 0"	1' 0"	Good	Remain
106	Sabal palmetto	Sabal	20' to 25'	10' 0"	1' 0"	Good	Remain
107	Sabal palmetto	Sabal	20' to 25'	10' 0"	1' 0"	Good	Remain
108	Roystonea regia	Royal Palm	20' to 25'	15' to 20'	1' 0"	Poor	Remove
109	Adonia merrilli	Christmas Palm	10' to 15'	5' to 10'	Multi	Poor	Remain
110	Adonia merrilli	Christmas Palm	10' to 15'	5' to 10'	Multi	Poor	Remain
111	Roystonea regia	Royal Palm	20' to 25'	15' to 20'	1' 0"	Fair	Remain
114	Wodyetia bifurcata	Foxtail Palm	20' to 25'	15' to 20'	1' 0"	Good	Remain
115	Wodyetia bifurcata	Foxtail Palm	20' to 25'	15' to 20'	1' 0"	Good	Remain
117	Clusia guttifera	Small Leaf Clusia	18' to 24'	10' to 15'	Multi	Good	Remain
118	Clusia guttifera	Small Leaf Clusia	18' to 24'	10' to 15'	Multi	Good	Remain
119	Clusia guttifera	Small Leaf Clusia	18' to 24'	10' to 15'	Multi	Good	Remain
120	Clusia guttifera	Small Leaf Clusia	18' to 24'	10' to 15'	Multi	Good	Remain
121	Thrinax radiata	Thatch Palm	6' to 8'	4' to 6'	8"	Good	Remain
121A	Thrinax radiata	Thatch Palm	5' OA	3' 0"	2 1/2"	Good	Remain
121B	Thrinax radiata	Thatch Palm	5' OA	3' 0"	2 1/2"	Good	Remain
121C	Thrinax radiata	Thatch Palm	5' OA	3' 0"	2 1/2"	Good	Remain
121D	Thrinax radiata	Thatch Palm	5' OA	3' 0"	2 1/2"	Good	Remain
122	Thrinax radiata	Thatch Palm	6' to 8'	4' to 6'	8"	Good	Remain
123	Sabal palmetto	Sabal	20' to 25'	10' 0"	1' 0"	Good	Remain
124	Sabal palmetto	Sabal	20' to 25'	10' 0"	1' 0"	Good	Remain
125	Clusia guttifera	Small Leaf Clusia	10' to 15'	10' to 15'	Multi	Good	Remain
126	Clusia guttifera	Small Leaf Clusia	10' to 15'	10' to 15'	Multi	Good	Remain
127	Sabal palmetto	Sabal	20' to 25'	10' 0"	1' 0"	Good	Remain
128	Sabal palmetto	Sabal	20' to 25'	10' 0"	1' 0"	Good	Remain
129	Sabal palmetto	Sabal	20' to 25'	10' 0"	1' 0"	Good	Remain
130	Sabal palmetto	Sabal	20' to 25'	10' 0"	1' 0"	Good	Remain
131	Sabal palmetto	Sabal	20' to 25'	10' 0"	1' 0"	Good	Remain
132	Clusia guttifera	Small Leaf Clusia	15' to 20'	10' to 15'	Multi	Good	Remain
133	Sabal palmetto	Sabal	20' to 25'	10' 0"	1' 0"	Good	Remain
134	Clusia guttifera	Small Leaf Clusia	15' to 20'	10' to 15'	Multi	Good	Remain
136	Clusia guttifera	Small Leaf Clusia	15' to 20'	10' to 15'	Multi	Good	Remain
137	Gordia sebastena	White Geiger	8' to 12'	6' to 10'	8"	Good	Remain
138	Clusia guttifera	Small Leaf Clusia	15' to 20'	10' to 15'	Multi	Good	Remain
139	Clusia guttifera	Small Leaf Clusia	15' to 20'	10' to 15'	Multi	Good	Remain
140	Suriana maritima	Bay Cedar	3' to 5'	4' 0"	Shrub	Good	Remain
EXISTING TREE AND PALM TO TRANSPLANT ON SITE SCHEDULE							
NUMBER	BOTANICAL NAME	COMMON NAME	HEIGHT	SPREAD	CALIPER	CONDITION	STATUS
3	Sabal palmetto	Sabal	20' to 25'	10' 0"	1' 0"	Good	Transplant
4	Conocarpus erectus 'sericeus'	Silver Buttonwood	6' 0"	4' to 5'	Multi (Hedge)	Good	Transplant
5	Conocarpus erectus 'sericeus'	Silver Buttonwood	6' 0"	4' to 5'	Multi (Hedge)	Good	Transplant
6	Conocarpus erectus 'sericeus'	Silver Buttonwood	6' 0"	4' to 5'	Multi (Hedge)	Good	Transplant
7	Conocarpus erectus 'sericeus'	Silver Buttonwood	6' 0"	4' to 5'	Multi (Hedge)	Good	Transplant
8	Sabal palmetto	Sabal	20' to 25'	8' to 10'	1' 0"	Good	Transplant
9	Sabal palmetto	Sabal	20' to 25'	10' 0"	1' 0"	Good	Transplant
10	Sabal palmetto	Sabal	20' to 25'	10' 0"	1' 0"	Good	Transplant
12	Sabal palmetto	Sabal	20' to 25'	10' 0"	1' 0"	Good	Transplant
28	Conocarpus erectus 'sericeus'	Silver Buttonwood	20' to 25'	10' 0"	12' 0" (Multi)	Good	Transplant
29A	Bursaria sinarube	Gumbo Limbo	10' to 15'	10' to 15'	8"	Fair	Transplant
29B	Bursaria sinarube	Gumbo Limbo	8' to 12'	5' to 8'	5"	Fair	Transplant
31	Conocarpus erectus 'sericeus'	Silver Buttonwood	12' to 15'	8' to 10'	8" (Multi)	Good	Remain/Fertilize
32	Conocarpus erectus 'sericeus'	Silver Buttonwood	12' to 15'	8' to 10'	8" (Multi)	Good	Remain/Fertilize
33	Conocarpus erectus 'sericeus'	Silver Buttonwood	12' to 15'	8' to 10'	10" (Multi)	Good	Remain/Fertilize
47	Sabal palmetto	Sabal	20' to 25'	10' 0"	1' 0"	Good	Transplant
48	Sabal palmetto	Sabal	20' to 25'	10' 0"	1' 0"	Good	Transplant
49	Sabal palmetto	Sabal	20' to 25'	10' 0"	1' 0"	Good	Transplant
50	Sabal palmetto	Sabal	20' to 25'	10' 0"	1' 0"	Good	Transplant
51	Sabal palmetto	Sabal	20' to 25'	10' 0"	1' 0"	Good	Transplant
53	Sabal palmetto	Sabal	20' to 25'	10' 0"	1' 0"	Good	Transplant
54	Sabal palmetto	Sabal	20' to 25'	10' 0"	1' 0"	Good	Transplant
63	Bursaria sinarube	Gumbo Limbo	15' to 20'	10' to 15'	8"	Fair	Transplant
64	Bursaria sinarube	Gumbo Limbo	15' to 20'	10' to 15'	8"	Fair	Transplant
65	Bursaria sinarube	Gumbo Limbo	15' to 20'	10' to 15'	8"	Fair	Transplant
66	Bursaria sinarube	Gumbo Limbo	15' to 20'	10' to 15'	8"	Fair	Transplant
67	Felicia decipiens	Japanese Fern Tree	15' to 20'	10' to 15'	9"	Good	Transplant
68	Roystonea regia	Royal Palm	20' to 25'	15' to 20'	2' 0"	Good	Transplant
73	Conocarpus erectus 'sericeus'	Silver Buttonwood	8' 0"	8' to 10'	12" (Multi)	Poor	Transplant
74	Roystonea regia	Royal Palm	20' to 25'	15' to 20'	1' 0"	Good	Transplant
75	Conocarpus erectus 'sericeus'	Silver Buttonwood	8' 0"	8' to 10'	12" (Multi)	Poor	Transplant
76	Conocarpus erectus 'sericeus'	Silver Buttonwood	8' 0"	8' to 10'	14" (Multi)	Poor	Transplant
111	Roystonea regia	Royal Palm	20' to 25'	15' to 20'	1' 0"	Good	Transplant
112	Adonia merrilli	Christmas Palm	20' to 25'	10' 0"	1' 0"	Fair	Transplant
113	Adonia merrilli	Christmas Palm	20' to 25'	10' 0"	1' 0"	Fair	Transplant
135	Thrinax radiata	Thatch Palm	6' to 8'	4' to 6'	8"	Good	Transplant





CONCEPTUAL PLANTING PLAN - WEST SIDE

SCALE: 1"=20'

PROPOSED PLANT PALLETTE				
TREES & PALMS				
ID	Quantity	Latin Name	Common Name	Scheduled Size
BS	19	Bursera simaruba	Gumbo Limbo	10-12' PH
CD	14	Coccoloba diversifolia	Pigeon Plum	12-14' PH, Fla #1
CE	7	Conocarpus erectus	Green Buttonwood	8-10', 2" DBH min., TF
CO	7	Chrysophyllum oliviforme	Satinleaf	12-14' PH, TF
LL	4	Lysiloma latissiliqua	Wild Tamarind	F6, 12-14' PH
MFSS	41	Mycrnanthes gracans var. *	Simpson Stopper	F6, 8-10", TF
PE db	5	Ptychosperma elegans	Alexander Palm	14'- 16' PH, db
RP	1	Royestonia regia	Royal Palm	14' CT, 24 OA, 20" DBH
SG	4	Simarouba glauca	Paradise Tree	30 gal, 10-12' Min
SP	16	Sabal Palmetto	Sabal Palm	18-24' OA
SS	3	Senna surattensis	Scrambled Egg Tree	10-12'', F6, STD
THR	10	Thrinax radiata	Florida Thatch Palm	Single 8-10' OA
SHRUBS				
ID	Quantity	Latin Name	Common Name	Scheduled Size
BL	29	Byrsonima lucida	Locust Berry	3' PH
CAM	44	Carrissa macrocarpa	Natal Plum	3 gal, 14 x 14"
CES3	25	Conocarpus erectus var. ser	Silver Buttonwood	3 gal, full, 36" OA
CI	232	Chrysobalanus icaco	Cocoplum	7 gal, heavy
FM	25	Ficus microcarpa "Green Is	Green Island Ficus	3 gal, 12-15", full
HPC	33	Hamelia patens "Compacta"	Dwarf Firebush	3 gal, 18-24", full
PN	10	Psychotria nervosa	Wild Coffee	3 gal, 18-24", full, shade
SRSS	3	Serenoa repens "Silver Saw	Silver Saw Palmetto	7 gal., 16-20"
TF	13	Tripsacum floridana	dwf Fakahatchee Grass	3 gal.,
ZF	3	Zamia furfuracea	Cardboard Palm	7 gal
ZP	17	Zamia pulmia	Coontie	3 gal., 10-14" Full

SYMBOL LEGEEND

EXISTING PALM	EXISTING TREE	PROPOSED HOSE BIB
PROPOSED PALM	TRANSPLANTED LOCATIONS	
PROPOSED TREE		
PROPOSED SHRUB		

SUNSET MARINA  
KEY WEST , FLORIDA

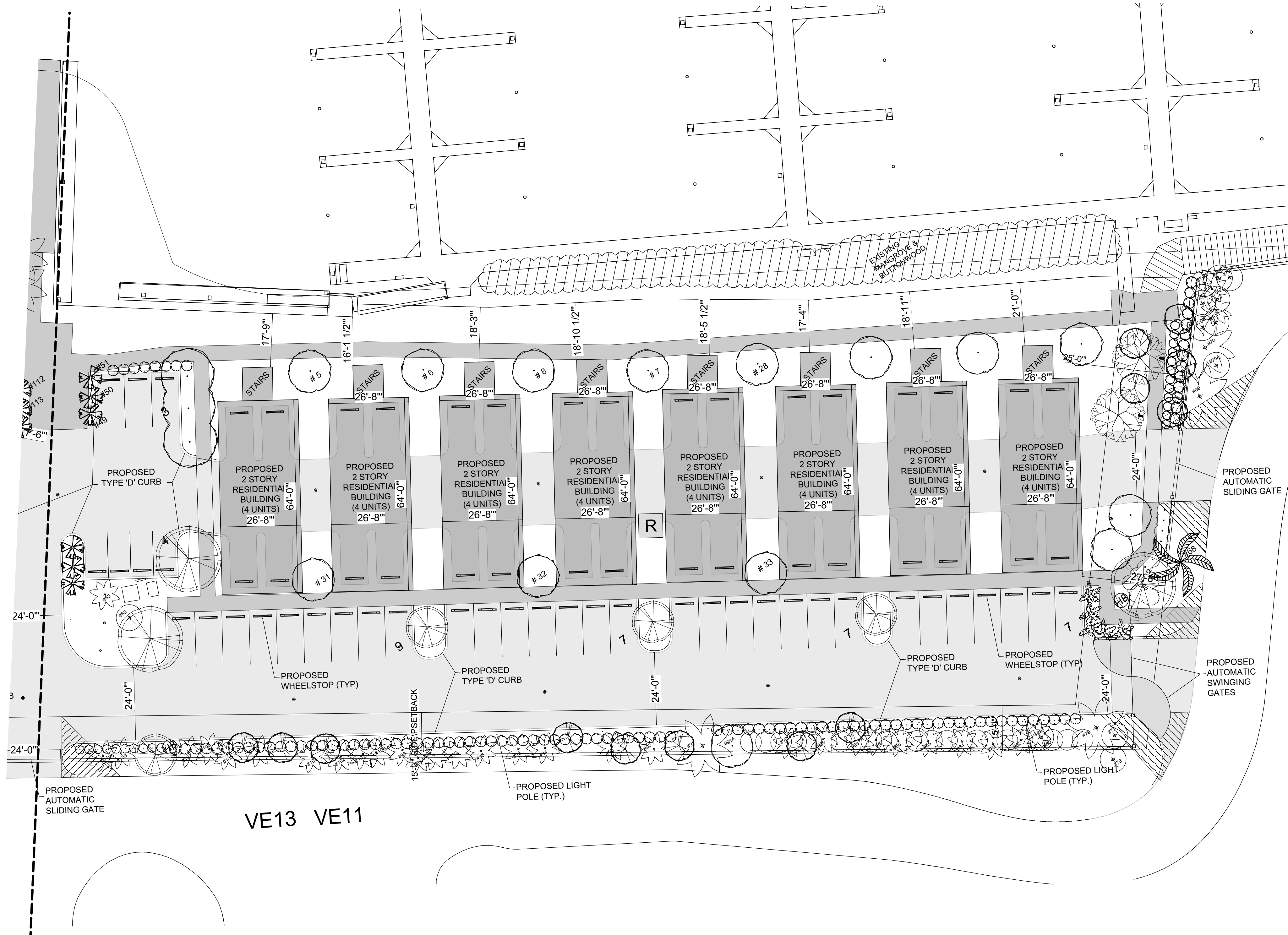
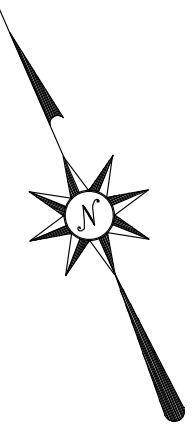
Mitchell Planning & Design, Inc.  
15450 SE 103rd Place Road  
Ocklawaha, Florida 32179  
352 288.0401/305.509.0966  
mitchellplanningdesign@gmail.com

Revisions:	

Date:	02.15.16
Scale:	As Noted
File:	16-FO-002
Drawn:	BM
Sheet:	

PP:04





CONCEPTUAL PLANTING PLAN - EAST SIDE

SCALE: 1"=20'

PROPOSED PLANT PALLETTE			
TREES & PALMS			
ID	Quantity	Latin Name	Scheduled Size
BS	19	Bursera simaruba	Gumbo Limbo
CD	14	Coccoloba diversifolia	Pigeon Plum
CE	7	Conocarpus erectus	Green Buttonwood
CO	7	Chrysophyllum oliviforme	Satinleaf
LL	4	Lysitoma latissilqua	Wild Tamarind
MFSS	41	Myrcianthes qragrans var.	Simpson Stopper
PE db	5	Ptychosperma elegans	Alexander Palm
RP	1	Rovestanea regia	Royal Palm
SG	4	Simarouba glauca	Paradise Tree
SP	16	Sabal Palmetto	Sabal Palm
SS	3	Senna surattensis	Scrambled Egg Tree
THR	10	Thrinax radiata	Florida Thatch Palm
SHRUBS			
ID	Quantity	Latin Name	Scheduled Size
BL	29	Byrsonima lucida	Locust Berry
CAM	44	Carrissa macrocarpa	Natal Plum
CES3	25	Conocarpus erectus var. ser	Silver Buttonwood
CT	232	Chrysobalanus icaco	Cocoplum
FM	25	Ficus microcarpa "Green Isl	Green Island Ficus
HPC	33	Hamelia patens "Compacta"	Dwarf Firebush
PN	10	Psychotria nervosa	Wild Coffee
SRSS	3	Serenoa repens "Silver Saw	Silver Saw Palmetto
TF	13	Tripsacum floridana	Dwf Fakahatchee Grass
ZF	3	Zamia furfuracea	Cardboard Palm
ZP	17	Zamia pulmia	Coontie

SYMBOL LEGEEND

EXISTING PALM	EXISTING TREE	PROPOSED HOSE BIB
PROPOSED PALM	TRANSPLANTED LOCATIONS	
PROPOSED TREE		
PROPOSED SHRUB		

Revisions:


Date:	02.15.16
Scale:	As Noted
File:	16-FO-002
Drawn:	BM
Sheet:	



TREE & PALM TRANSPLANTATION NOTES

- A. General Notes:
1. Trees & Palms to be relocated shall be root pruned a minimum of twelve weeks prior to transplanting. The Landscape Contractor shall coordinate with the General Contractor for scheduling prior to commencement of any site demolition that would impact the trees/palms.
  2. The Landscape Contractor shall verify all overhead and underground utilities and easements prior to beginning work. The Landscape Contractor is advised to call Sunshine State One (1-800-432-4770) to field locate utilities and secure a permit prior to beginning work. The General Contractor is responsible for coordinating all trenching for utilities with the Landscape Plan prior to beginning the project. The Owner or Landscape Architect/Designer shall not be responsible for any damage done to utility or irrigation lines.
  3. The Landscape Contractor shall maintain the transplanted materials during the root pruning and transplanting process. Maintainance shall include, at a minimum, weeding, watering, mowing, fertilizing, pest management, and other horticultural practices as required.
  4. The Landscape Architect/Designer may inspect the plant materials to verify compliance with with specifications as outlined. Should discrepancies occur, the Landscape Architect/Designer shall provide written comments to Landscape Contractor and Owner.
  5. The Landscape Contractor shall guarantee the transplanted material for one year. Any transplanted material found to be in an unhealthy condition at the time of final inspection shall be replaced at the Landscape Contractors cost. Replacement material shall be agreed upon in writing between the Owner, Landscape Contractor and Landscape Architect/Designer.
  6. The Landscape Contractor is responsible for obtaining all necessary Local, State and Federal permits as required and shall comply with all applicable Building Codes.
  7. Root Pruning & Transplantation of Mahogany Trees, Pigeon Plum and all other non-Gumbo Limbo tree species:

A minimum root radius of two feet (2') from all side of the trunk of the trees to an average depth of two feet (2') shall be maintained. Root prune trenches shall be treated with MycorTree Tree Saver Transplant **TM**, watered thoroughly and backfilled with a mixture of 50% native soil, and 50% wood chips. These trees shall be watered to saturation at time of placement in the trenches. Supplemental irrigation shall be every other day until placement in final planting location. Proper tree strapping techniques shall be applied at all times including a strap to run under the root ball to support the tree during relocation and to protect the tree from damage to the bark. They shall not be left out of the ground for a period of time not to exceed four hours without their roots being protected. Tree booms shall be protected to prevent bark damage. Trees to be transplanted shall be pruned with **only with** prior approval by the Landscape Architect/Designer or qualified arborist.

Upon placement of the tree in the final planting hole, the hole shall be prepared with 1/2 the recommened amount of Mycor Tree Tree Saver Transplant, watered thoroughly, backfilled with a mixture of 50% native soil, 35% sand and 15% peat to a height of 1/2 the rootball. Install the balance of Mycor Tree Saver Transplant. This shall be wateredthoroughly, removing all air pockets. Finish backfilling, creating a water basin with a three foot diameter and water until saturated. Trees shall be planted at the same depth at which they were growing and care shall be taken to eliminate all air pockets. All trees shall be s taked in place with a minimum of 3 (more may be necessary) pieces of black staking tape wrapped aroundthe branching fork of the tree once forming a loop and attached to a 24" long piece of #4 reinforcing rod driven fully into the ground.

Trees are to be watered every day for the first week, every second day for the second week, every third day for the third week and weekly thereafter until established.

8.. Transplanting Gumbo Limbos and all Palms not including Florida Thatch:

A minimum rootball radius of three feet (3') from all sides of the trunk of the trees or palms to an average depth of three feet (3') shall be maintained. Trees and palms shall be tranplanted directly to the prepared hole in the storage area. Proper tree stapping techniques shall be applied at all times including a strap to run under the rootball to support the tree and to prevent bark stripping or other damage. Tree booms shall be protected to prevent bark damage. Trees to be transplanted shall not be trimmed unless authorized by the Landscape Architect/Designer. Palms shall be trimmed of all f lowers and nuts. The fronds shall be tied with biodegradable twine. They shall not be left out of the ground for a period of time greated than four hours without their roots being protected.

Root prune/holding trenches shall be treated with Mycor Palm Saver **TM**, watered thoroughly and backfilled with a mixture of 50% native soil, and 50% wood chips. These trees shall be watered to saturation at time of placement in the trenches. Supplemental irrigation shall be applied every other day until placement in final planting location.

Upon placing the tree/palm in the hole, the hole shall be prepared with 1/2 the recommended amount of Mycor Palm Saver, watered thoroughly, backfilled with a mixture of 75% native soil and 25% sand to a height of 1/2 the rootball. Install the balance of Mycor Palm Saver. Water the hole thoroughly removing all air pockets. Finish planting with the balance of the backfill material, creat a water basin and water well. Trees and palms shall be staked with a minimum of 3 (more may be necessary) knot free 4" x 4" nailed in three places to a 2" x 4" x 12" banded to the trunk over burlap wrapped 5 times a round the trunk to a minimum of 7 to 8' above grade. Under no circumstances shall nails be driven directly into the trunk of the tree or palm.

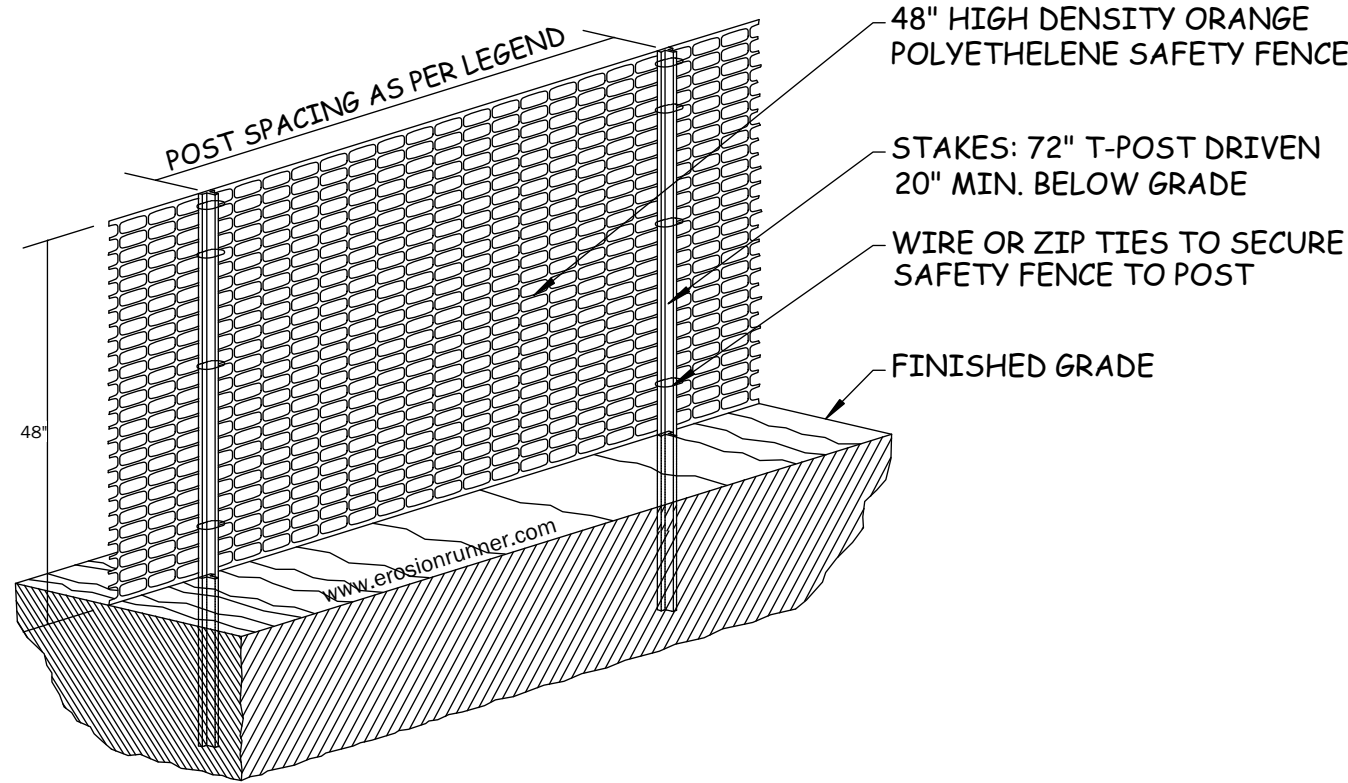
9. Trees/Palms are to be watered every day for the first week, every second day for the second week, every third day for the third week and weekly thereafter until established.
10. Over the guarantee period the Landscape Contractor is responsible for resetting any trees that re not vertical when caused by winds of less than 75 mph.
11. After the transplanted trees are in their final location, the Landscape Contractor shall be required to inspect, water (as required) and maintain soil moisture during the guarantee period in accordance with the following schedule:  
First Month: DAILY Second Month: 3 times per week Third and Fourth Month: 2 times per week Last Eight Months: 1 time per week.  
Amount of Water to be applied: 2 to 3 gallons per inch of trunk caliper as measured at the top of the root ball.

TREE TRANSPLANTATION & PROTECTION DETAILS, TREE STAGING PLAN

SCALE: AS NOTED

SENSITIVE AREA/TREE PROTECTION

**Protection of Existing Trees and Vegetation:**  
Protect trees tagged to remain in place against unnecessary cutting, breaking or skinning of roots, skinning and bruising of bark, smothering of trees by stockpiling construction materials or excavating materials within drip line, excess foot or vehicular traffic or parking of vehicles within drip line. Trees shall be protected with orange vinyl fencing installed according to manufacturer's instruction or as noted above.

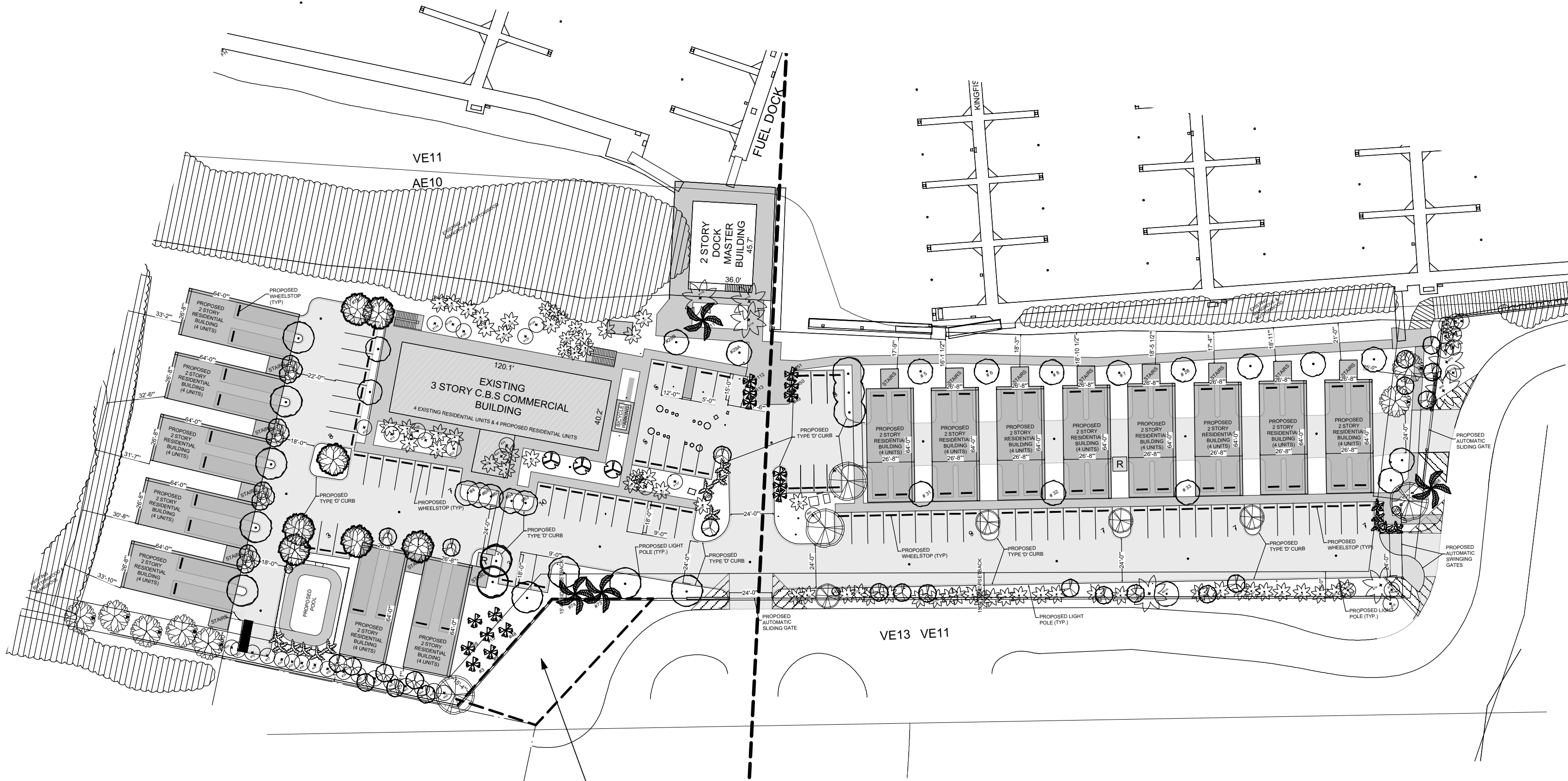


www.erosionrunner.com

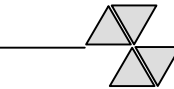
SCALE: NTS

TREE STAGING PLAN

SCALE: 1" = 50'



LOCATION FOR STORAGE OF PALMS TO BE TRANSPLANTED. OWNER IS COORDINATING WITH MONROE COUNTY SHERIFF'S OFFICE TO USE THIS AREA DURING CONSTRUCTION. AREA WILL BE FENCED AND CROSS BRACED POLES INSTALLED. PALMS WILL BE STORED UPRIGHT IN THIS ZONE. AS SOON AS AREA FOR RELOCATION IS AVAILABLE, PALMS SHALL BE REPLANTED. ALL OTHER PLANT MATERIAL (TREES AND SHRUBS) PROPOSED FOR REUSE SHALL BE TRANSPORTED TO AN OFF SITE NURSERY FOR MAINTENANCE DURING CONSTRUCTION. HOSE BIB FOR WATER SUPPLY SHALL BE INSTALLED ADJACENT TO THIS SITE TO MAINTAIN THE PLANT MATERIAL.



SUNSET MARINA  
KEY WEST , FLORIDA

Mitchell Planning & Design, Inc.

15450 SE 103rd Place Road  
Ocklawaha, Florida 32179  
352.288.0401/305.509.0966  
mitchellplanningdesign@gmail.com

Revisions:

04.07.16: Additional Info for Tree Commission mtg.

Date:	02.15.16
Scale:	As Noted
File:	16-FO-002
Drawn:	BM
Sheet:	

PP:06