

STAFF REPORT

DATE: April 20, 2016 and May 5, 2016

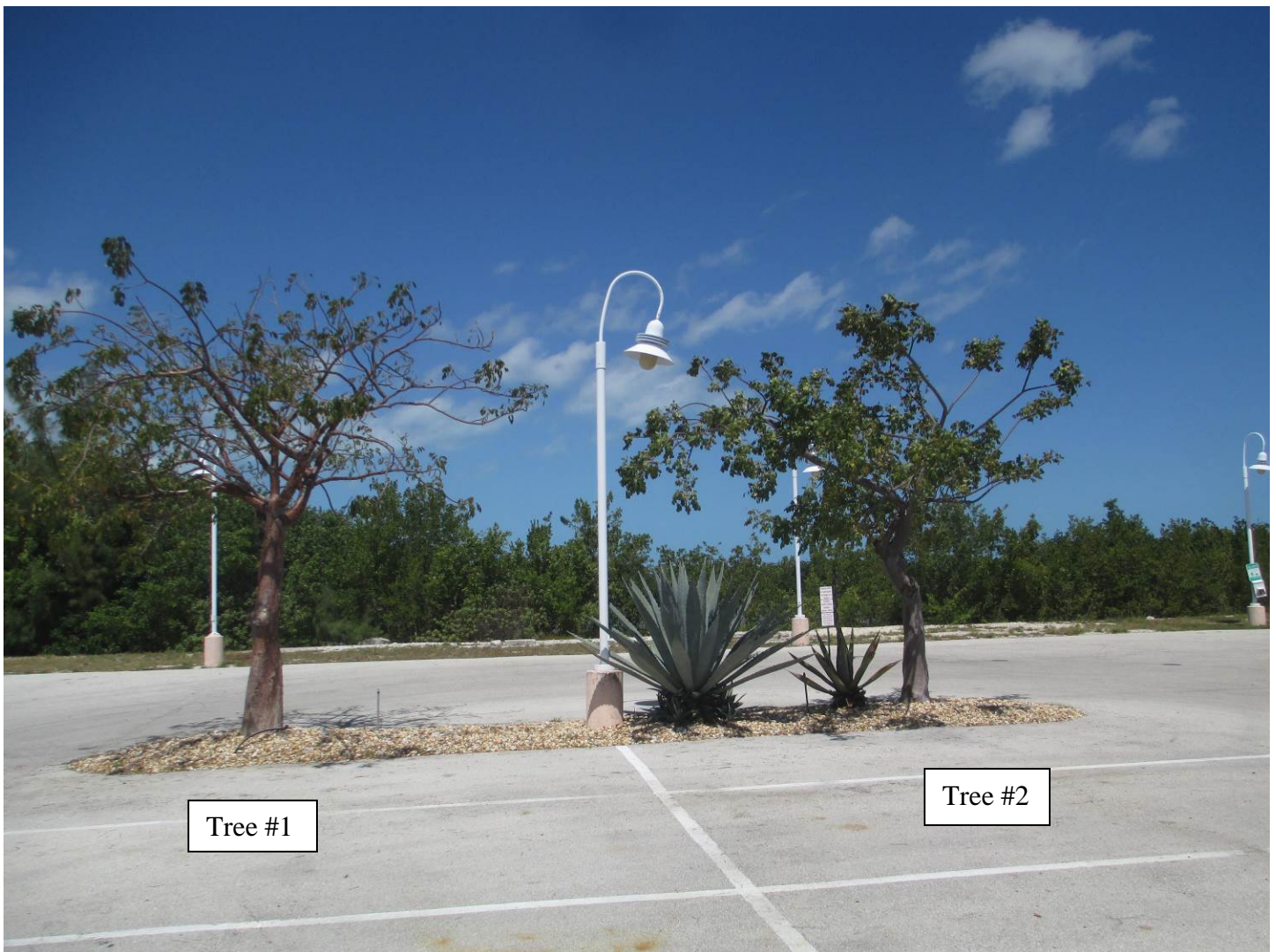
RE: **5555 College Road (permit application # T16-7876)**

FROM: Karen DeMaria, City of Key West Urban Forestry Manager

An application was received requesting the approval of the Conceptual Landscape Plan with Tree Removal for a major development plan at Sunset Marina. A site inspection was done on March 23, 2016 and documented the following:

Most of the proposed work will occur in what is an existing parking lot.

REMOVALS





#1 Gumbo Limbo (*Bursera simaruba*)





Diameter: 9"

Location: 80%

Species: 100% (on protected tree list)

Condition: 40% (poor)

Total Average Value = 73%

Value x Diameter = 6.5 replacement caliper inches

#2 Gumbo Limbo (*Bursera simaruba*)



Diameter: 9"

Location: 80%

Species: 100% (on protected tree list)

Condition: 40% (poor)

Total Average Value = 73%

Value x Diameter = 6.5 replacement caliper inches

#11 Silver Buttonwood (*Conocarpus erectus*)



Diameter: 8" (Multiple trunks)

Location: 80%

Species: 100% (on protected tree list)

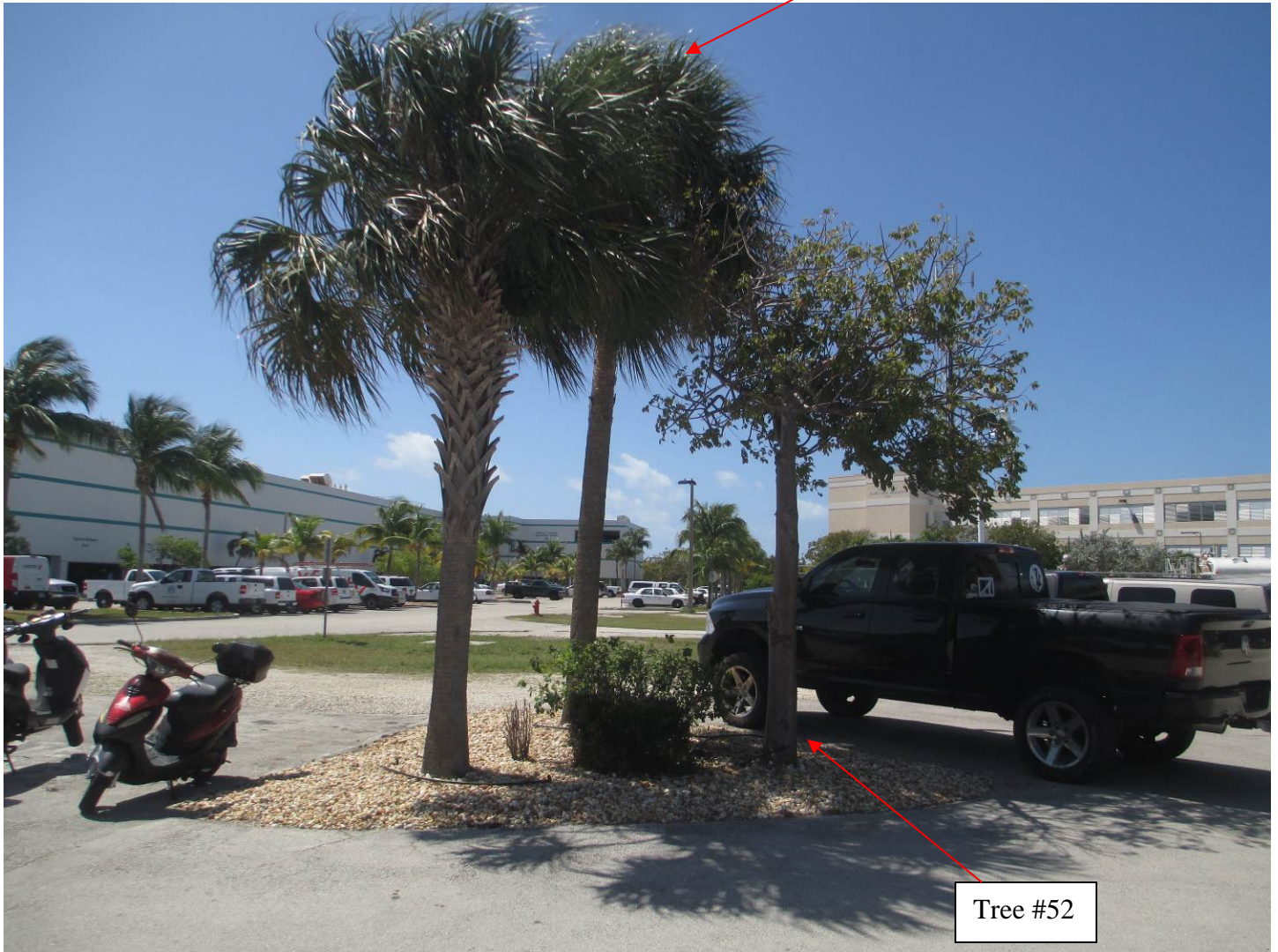
Condition: 60% (fair)

Total Average Value = 80%

Value x Diameter = 6.4 replacement caliper inches

#52 Gumbo Limbo (*Bursera simaruba*)

Tree Transplants #53 & 54



Diameter: 6"

Location: 80%

Species: 100% (on protected tree list)

Condition: 40% (poor)

Total Average Value = 73%

Value x Diameter = 4.3 replacement caliper inches

#108 Royal Palm (poor condition)



Replacement = 1 native palm, 4 ft tall.

TOTAL REPLACEMENTS REQUIRED:

Gumbo Limbo #1 = 6.5 caliper inches
Gumbo Limbo #2 = 6.5 caliper inches
Silver Buttonwood #11 = 6.4 caliper inches
Gumbo Limbo #52 = 4.3 caliper inches

TOTAL: 23.7 caliper inches and 1-native palm

#80 Melaleuca---Invasive Tree Species (no permit required for removal)



TRANSPLANTS

Sabal Palms #3, 8, 9, 10, 12, 47, 48, 49, 50, 51, 53, 54

Silver Buttonwood # 4,5,6,7, 28, 31, 32, 33, 75, 76

Gumbo Limbo # 29A, 29B, 63, 64, 65, 66

Japanese Fern #67

Royal Palm # 68, 73, 74, 111

Christmas Palm # 112, 113

Thatch Palms # 135





Trees # 73, 74, 75, 76



Tree #66



Tree #65



Tree #64



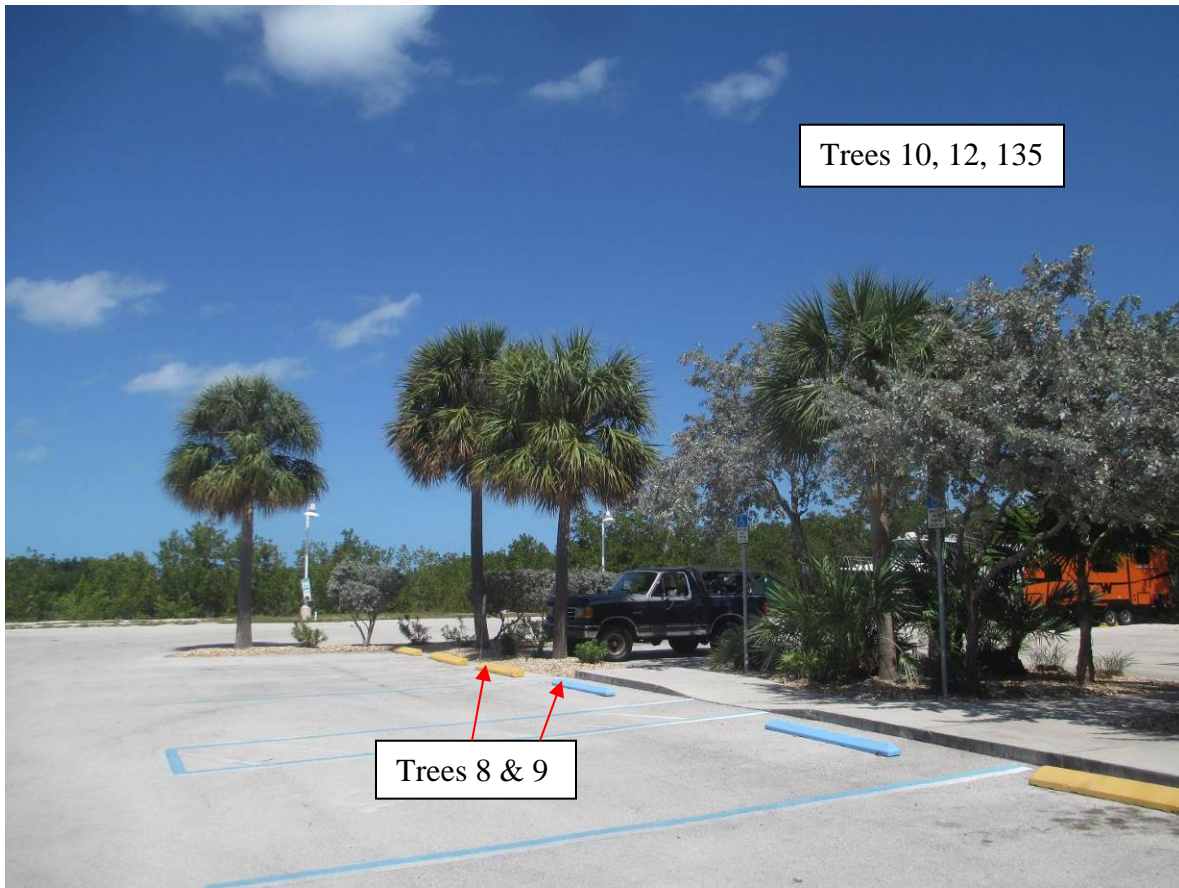
Tree #63



Tree #111, 112, 113







Recommendation: Recommend approval of the Conceptual Landscape Plan with Tree removal.



Note:
All invasive exotic vegetation will be removed and maintained from being on the property, especially the shoreline mangrove area. Specific species include: Australian Pine, Brazilian Pepper, Melaleuca, Lead Tree and Thespesia populnea.

TREE IMPACT PLAN - WEST SIDE

SCALE: 1"=20'

NUMBER	BOTANICAL NAME	COMMON NAME	HEIGHT	SPREAD	CALIPER	CONDITION	STATUS
1	Bursera simarouba	Gumbo Limbo	15' to 20'	15' to 20'	6"	Poor	Remove
2	Bursera simarouba	Gumbo Limbo	15' to 20'	15' to 20'	7"	Poor	Remove
11	Conocarpus erectus 'sericeus'	Silver Buttonwood	15' to 20'	8' to 10'	8" (multi)	Good	Remove
52	Bursera simarouba	Gumbo Limbo	15' to 20'	10' to 15'	5"	Poor	Remove
82	Melaleuca quinquenervia	Melaleuca	8' to 10'	8' to 10'	5"	Poor	Remove
108	Roystonea regia	Royal Palm	20' to 25'	15' to 20'	10"	Poor	Remove

NOTES: Height, Spread, Caliper and location of vegetation has not been surveyed and is approximate. All vegetation scheduled to be transplanted will be transplanted within the Sunset Marina site. All invasive exotic vegetation not listed here will be removed from the site.

NUMBER	BOTANICAL NAME	COMMON NAME	HEIGHT	SPREAD	CALIPER	CONDITION	STATUS
13	Chusquea quillifera	Small Leaf Chusquea	12' to 15'	10' to 15'	Multi	Good	Remove/Fertilize
14	Conocarpus erectus 'sericeus'	Silver Buttonwood	12' to 15'	8' to 10'	Multi	Good	Remove/Fertilize
15	Sabal palmetto	Sabal	20' to 25'	10' to 15'	10"	Good	Remove/Fertilize
16	Sabal palmetto	Sabal	20' to 25'	10' to 15'	10"	Good	Remove/Fertilize
17	Sabal palmetto	Sabal	20' to 25'	10' to 15'	10"	Good	Remove/Fertilize
18	Conocarpus erectus 'sericeus'	Silver Buttonwood	12' to 15'	8' to 10'	Multi	Good	Remove/Fertilize
19	Sabal palmetto	Sabal	20' to 25'	10' to 15'	10"	Good	Remove/Fertilize
20	Sabal palmetto	Sabal	20' to 25'	10' to 15'	10"	Good	Remove/Fertilize
21	Sabal palmetto	Sabal	20' to 25'	10' to 15'	10"	Good	Remove/Fertilize
22	Conocarpus erectus 'sericeus'	Silver Buttonwood	12' to 15'	8' to 10'	Multi	Good	Remove/Fertilize
23	Conocarpus erectus 'sericeus'	Silver Buttonwood	12' to 15'	8' to 10'	Multi	Good	Remove/Fertilize
24	Chusquea quillifera	Small Leaf Chusquea	12' to 15'	10' to 15'	Multi	Good	Remove/Fertilize
24A	Conocarpus erectus 'sericeus'	Silver Buttonwood	12' to 15'	8' to 10'	Multi	Good	Remove/Fertilize
25	Sabal palmetto	Sabal	20' to 25'	10' to 15'	10"	Good	Remove/Fertilize
26	Sabal palmetto	Sabal	20' to 25'	10' to 15'	10"	Good	Remove/Fertilize
27	Sabal palmetto	Sabal	20' to 25'	10' to 15'	10"	Good	Remove/Fertilize
30	Conocarpus erectus 'sericeus'	Silver Buttonwood	12' to 15'	8' to 10'	Multi	Good	Remove/Fertilize
34	Conocarpus erectus 'sericeus'	Silver Buttonwood	12' to 15'	8' to 10'	Multi	Good	Remove/Fertilize
35	Conocarpus erectus 'sericeus'	Silver Buttonwood	12' to 15'	8' to 10'	Multi	Good	Remove/Fertilize
36	Conocarpus erectus 'sericeus'	Silver Buttonwood	12' to 15'	8' to 10'	Multi	Good	Remove/Fertilize
37	Conocarpus erectus 'sericeus'	Silver Buttonwood	12' to 15'	8' to 10'	Multi	Good	Remove/Fertilize
38	Conocarpus erectus 'sericeus'	Silver Buttonwood	12' to 15'	8' to 10'	Multi	Good	Remove/Fertilize
39	Conocarpus erectus 'sericeus'	Silver Buttonwood	12' to 15'	8' to 10'	Multi	Good	Remove/Fertilize
40	Conocarpus erectus 'sericeus'	Silver Buttonwood	12' to 15'	8' to 10'	Multi	Good	Remove/Fertilize
41	Conocarpus erectus 'sericeus'	Silver Buttonwood	12' to 15'	8' to 10'	Multi	Good	Remove/Fertilize
42	Conocarpus erectus 'sericeus'	Silver Buttonwood	12' to 15'	8' to 10'	Multi	Good	Remove/Fertilize
43	Conocarpus erectus 'sericeus'	Silver Buttonwood	12' to 15'	8' to 10'	Multi	Good	Remove/Fertilize
44	Conocarpus erectus 'sericeus'	Silver Buttonwood	12' to 15'	8' to 10'	Multi	Good	Remove/Fertilize
45	Conocarpus erectus 'sericeus'	Silver Buttonwood	12' to 15'	8' to 10'	Multi	Good	Remove/Fertilize
46	Conocarpus erectus 'sericeus'	Silver Buttonwood	12' to 15'	8' to 10'	Multi	Good	Remove/Fertilize
55	Sabal palmetto	Sabal	20' to 25'	10' to 15'	10"	Good	Remove
55A	Thrinax radiata	Thatch Palm	5' to 6'	3' to 4'	3"	Good	Remove
55B	Thrinax radiata	Thatch Palm	5' to 6'	3' to 4'	3"	Good	Remove
56	Sabal palmetto	Sabal	20' to 25'	10' to 15'	10"	Good	Remove
57	Sabal palmetto	Sabal	20' to 25'	10' to 15'	10"	Good	Remove
58	Conocarpus erectus 'sericeus'	Silver Buttonwood	12' to 15'	8' to 10'	Multi	Poor	Remove
59	Conocarpus erectus 'sericeus'	Silver Buttonwood	12' to 15'	8' to 10'	Multi	Poor	Remove
60	Chusquea quillifera	Small Leaf Chusquea	15' to 20'	10' to 15'	Multi	Good	Remove
61 & 105	NO TREES						
62	Sabal palmetto	Sabal	20' to 25'	10' to 15'	10"	Good	Remove
69	Roystonea regia	Royal Palm	15' to 20'	15' to 20'	2"	Good	Remove
70	Roystonea regia	Royal Palm	20' to 25'	15' to 20'	2"	Good	Remove
70A	Tournefortia bicolorata	Mahee Variegated	15' to 18'	12' to 16'	4"	Good	Remove - On ROW
70B	Tournefortia bicolorata	Mahee Variegated	15' to 18'	12' to 16'	4"	Good	Remove - On ROW
70C	Chusquea quillifera	Small Leaf Chusquea	15' to 20'	10' to 15'	Multi	Good	Remove - On ROW
70D	Chusquea quillifera	Small Leaf Chusquea	15' to 20'	10' to 15'	Multi	Good	Remove - On ROW
70E	Conocarpus erectus 'sericeus'	Silver Buttonwood	12' to 15'	8' to 10'	Multi	Good	Remove - On ROW
70F	Conocarpus erectus 'sericeus'	Silver Buttonwood	12' to 15'	8' to 10'	Multi	Good	Remove - On ROW
70G	Chusquea quillifera	Small Leaf Chusquea	15' to 20'	10' to 15'	Multi	Good	Remove - On ROW
70H	Chusquea quillifera	Small Leaf Chusquea	15' to 20'	10' to 15'	Multi	Good	Remove - On ROW
71	Sabal palmetto	Sabal	20' to 25'	10' to 15'	10"	Good	Remove - On ROW
72	Sabal palmetto	Sabal	20' to 25'	10' to 15'	10"	Good	Remove - On ROW
77	Conocarpus erectus 'sericeus'	Silver Buttonwood	12' to 15'	8' to 10'	Multi	Poor	Remove
78	Conocarpus erectus 'sericeus'	Silver Buttonwood	12' to 15'	8' to 10'	Multi	Poor	Remove
79	Roystonea regia	Royal Palm	20' to 25'	15' to 20'	10"	Good	Remove
81	Adiantum merrillii	Christmas Palm	10' to 15'	5' to 10'	Multi	Poor	Remove
82	Sabal palmetto	Sabal	20' to 25'	10' to 15'	10"	Good	Remove
83	Sabal palmetto	Sabal	20' to 25'	10' to 15'	10"	Good	Remove
84	Sabal palmetto	Sabal	20' to 25'	10' to 15'	10"	Good	Remove
85	Sabal palmetto	Sabal	20' to 25'	10' to 15'	10"	Good	Remove
86	Sabal palmetto	Sabal	20' to 25'	10' to 15'	10"	Good	Remove
87	Sabal palmetto	Sabal	20' to 25'	10' to 15'	10"	Good	Remove
88	Sabal palmetto	Sabal	20' to 25'	10' to 15'	10"	Good	Remove
89	Sabal palmetto	Sabal	20' to 25'	10' to 15'	10"	Good	Remove
90	Sabal palmetto	Sabal	20' to 25'	10' to 15'	10"	Good	Remove
91	Roystonea regia	Royal Palm	20' to 25'	15' to 20'	2"	Good	Remove
91A	Simarouba glauca	Paradise Tree	15' to 18'	15' to 20'	2 1/2"	Good	Remove
92	Sabal palmetto	Sabal	20' to 25'	10' to 15'	10"	Good	Remove
93	Sabal palmetto	Sabal	20' to 25'	10' to 15'	10"	Good	Remove
94	Sabal palmetto	Sabal	20' to 25'	10' to 15'	10"	Good	Remove
95	Sabal palmetto	Sabal	20' to 25'	10' to 15'	10"	Good	Remove
96	Sabal palmetto	Sabal	20' to 25'	10' to 15'	10"	Good	Remove
97	Sabal palmetto	Sabal	20' to 25'	10' to 15'	10"	Good	Remove
98	Sabal palmetto	Sabal	20' to 25'	10' to 15'	10"	Good	Remove
99	Adiantum merrillii	Christmas Palm	10' to 15'	5' to 10'	Multi	Poor	Remove
99A	Adiantum merrillii	Christmas Palm	10' to 15'	5' to 10'	Multi	Poor	Remove
100	Sabal palmetto	Sabal	20' to 25'	10' to 15'	10"	Good	Remove
101	Sabal palmetto	Sabal	20' to 25'	10' to 15'	10"	Good	Remove
102	Sabal palmetto	Sabal	20' to 25'	10' to 15'	10"	Good	Remove
103	Sabal palmetto	Sabal	20' to 25'	10' to 15'	10"	Good	Remove
104	Sabal palmetto	Sabal	20' to 25'	10' to 15'	10"	Good	Remove
106	Sabal palmetto	Sabal	20' to 25'	10' to 15'	10"	Good	Remove
107	Sabal palmetto	Sabal	20' to 25'	10' to 15'	10"	Good	Remove
108	Roystonea regia	Royal Palm	20' to 25'	15' to 20'	2"	Poor	Remove
109	Adiantum merrillii	Christmas Palm	10' to 15'	5' to 10'	Multi	Poor	Remove
110	Adiantum merrillii	Christmas Palm	10' to 15'	5' to 10'	Multi	Poor	Remove
114	Roystonea regia	Royal Palm	20' to 25'	15' to 20'	10"	Poor	Remove
115	Wrightia bitorquata	Paradise Tree	15' to 18'	15' to 20'	10"	Good	Remove
116	Wrightia bitorquata	Paradise Tree	15' to 18'	15' to 20'	10"	Good	Remove
117	Chusquea quillifera	Small Leaf Chusquea	15' to 20'	10' to 15'	Multi	Good	Remove
118	Chusquea quillifera	Small Leaf Chusquea	15' to 20'	10' to 15'	Multi	Good	Remove
119	Chusquea quillifera	Small Leaf Chusquea	15' to 20'	10' to 15'	Multi	Good	Remove
120	Chusquea quillifera	Small Leaf Chusquea	15' to 20'	10' to 15'	Multi	Good	Remove
121	Thrinax radiata	Thatch Palm	5' to 6'	3' to 4'	3"	Good	Remove
121A	Thrinax radiata	Thatch Palm	5' to 6'	3' to 4'	3"	Good	Remove
121B	Thrinax radiata	Thatch Palm	5' to 6'	3' to 4'	3"	Good	Remove
121C	Thrinax radiata	Thatch Palm	5' to 6'	3' to 4'	3"	Good	Remove
121D	Thrinax radiata	Thatch Palm	5' to 6'	3' to 4'	3"	Good	Remove
122	Thrinax radiata	Thatch Palm	5' to 6'	3' to 4'	3"	Good	Remove
123	Sabal palmetto	Sabal	20' to 25'	10' to 15'	10"	Good	Remove
124	Sabal palmetto	Sabal	20' to 25'	10' to 15'	10"	Good	Remove
125	Chusquea quillifera	Small Leaf Chusquea	15' to 20'	10' to 15'	Multi	Good	Remove
126	Chusquea quillifera	Small Leaf Chusquea	15' to 20'	10' to 15'	Multi	Good	Remove
127	Sabal palmetto	Sabal	20' to 25'	10' to 15'	10"	Good	Remove
128	Sabal palmetto	Sabal	20' to 25'	10' to 15'	10"	Good	Remove
129	Sabal palmetto	Sabal	20' to 25'	10' to 15'	10"	Good	Remove
130	Sabal palmetto	Sabal	20' to 25'	10' to 15'	10"	Good	Remove
131	Sabal palmetto	Sabal	20' to 25'	10' to 15'	10"	Good	Remove
132	Chusquea quillifera	Small Leaf Chusquea	15' to 20'	10' to 15'	Multi	Good	Remove
133	Sabal palmetto	Sabal	20' to 25'	10' to 15'	10"	Good	Remove
134	Chusquea quillifera	Small Leaf Chusquea	15' to 20'	10' to 15'	Multi	Good	Remove
136	Chusquea quillifera	Small Leaf Chusquea	15' to 20'	10' to 15'	Multi	Good	Remove
137	Cordia sebestena	White Sager	8' to 12'	6' to 10'	Multi	Good	Remove
138	Chusquea quillifera	Small Leaf Chusquea	15' to 20'	10' to 15'	Multi	Good	Remove
139	Chusquea quillifera	Small Leaf Chusquea	15' to 20'	10' to 15'	Multi	Good	Remove
140	Suriana maritima	Bay Cedar	3' to 5'	4' to 6'	4"	Good	Remove

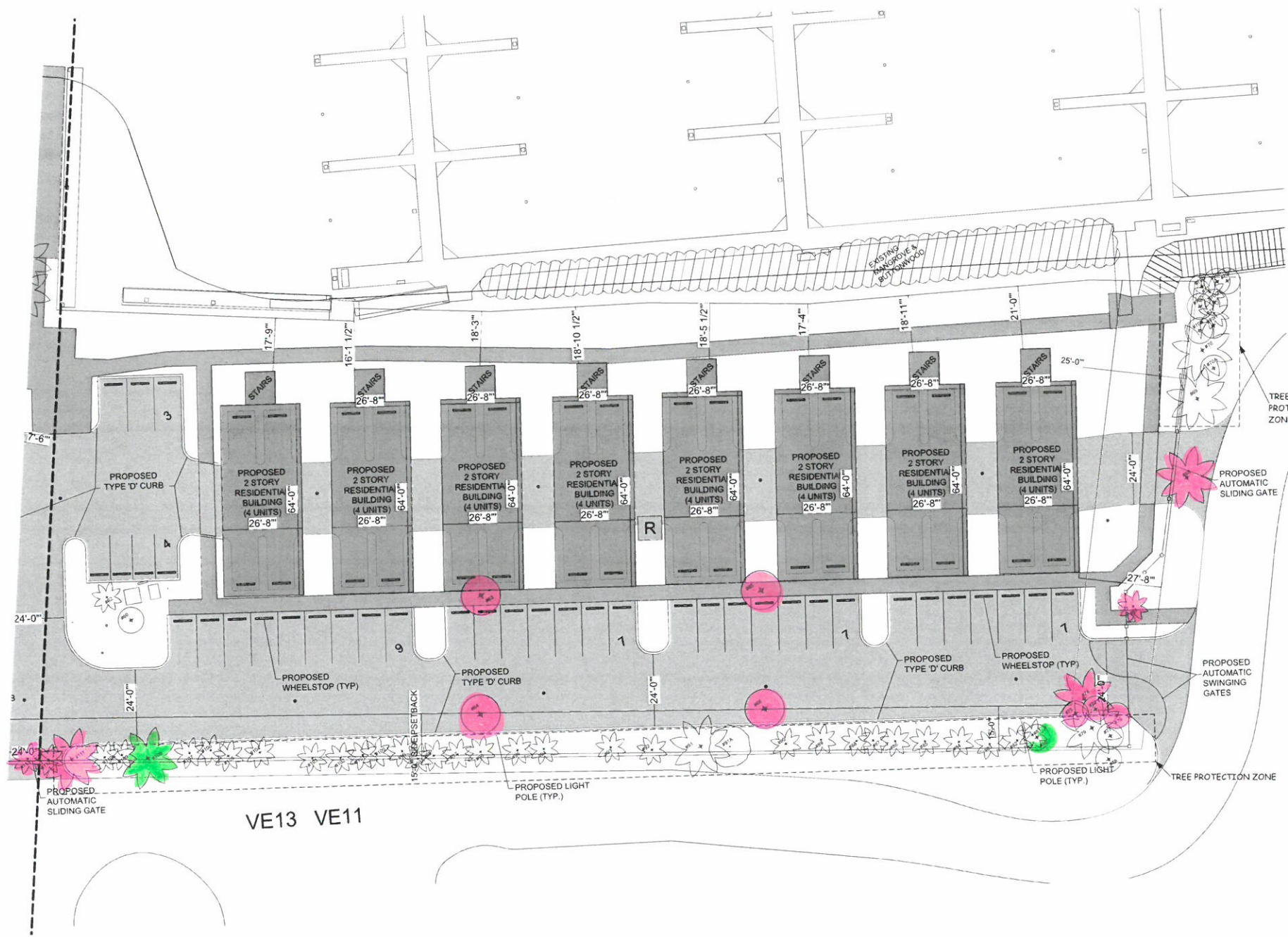
NUMBER	BOTANICAL NAME	COMMON NAME	HEIGHT	SPREAD	CALIPER	CONDITION	STATUS
1	Sabal palmetto	Sabal	20' to 25'	10' to 15'	10"	Good	Transplant
2	Conocarpus erectus 'sericeus'	Silver Buttonwood	12' to 15'	8' to 10'	Multi (Hedge)	Good	Transplant
3	Conocarpus erectus 'sericeus'	Silver Buttonwood	12' to 15'	8' to 10'	Multi (Hedge)	Good	Transplant
4	Conocarpus erectus 'sericeus'	Silver Buttonwood	12' to 15'	8' to 10'	Multi (Hedge)	Good	Transplant
5	Conocarpus erectus 'sericeus'	Silver Buttonwood	12' to 15'	8' to 10'	Multi (Hedge)	Good	Transplant
6	Conocarpus erectus 'sericeus'	Silver Buttonwood	12' to 15'	8' to 10'	Multi (Hedge)	Good	Transplant
7	Sabal palmetto	Sabal	20' to 25'	10' to 15'	10"	Good	Transplant
8	Sabal palmetto	Sabal	20' to 25'	10' to 15'	10"	Good	Transplant
9	Sabal palmetto	Sabal	20' to 25'	10' to 15'	10"	Good	Transplant
10	Sabal palmetto	Sabal	20' to 25'	10' to 15'	10"	Good	Transplant
12	Sabal palmetto	Sabal	20' to 25'	10' to 15'	10"	Good	Transplant
28	Conocarpus erectus 'sericeus'	Silver Buttonwood	12' to 15'	8' to 10'	12" (Multi)	Good	Transplant
29A	Bursera simarouba	Gumbo Limbo	10' to 15'	10' to 15'	8"	Fair	Transplant
29B	Bursera simarouba	Gumbo Limbo	10' to 15'	10' to 15'	8"	Fair	Transplant
31	Conocarpus erectus 'sericeus'	Silver Buttonwood	12' to 15'	8' to 10'	8" (Multi)	Good	Remove/Fertilize
32	Conocarpus erectus 'sericeus'	Silver Buttonwood	12' to 15'	8' to 10'	8" (Multi)	Good	Remove/Fertilize
33	Conocarpus erectus 'sericeus'	Silver Buttonwood	12' to 15'	8' to 10'	10" (Multi)	Good	Remove/Fertilize
47	Sabal palmetto	Sabal	20' to 25'	10' to 15'	10"	Good	Transplant
48	Sabal palmetto	Sabal	20' to 25'	10' to 15'	10"	Good	Transplant
49	Sabal palmetto	Sabal	20' to 25'	10' to 15'	10"	Good	Transplant
50	Sabal palmetto	Sabal	20' to 25'	10' to 15'	10"	Good	Transplant
51	Sabal palmetto	Sabal	20' to 25'	10' to 15'	10"	Good	Transplant
53	Sabal palmetto	Sabal	20' to 25'	10' to 15'	10"	Good	Transplant
54	Sabal palmetto	Sabal	20' to 25'	10' to 15'	10"	Good	Transplant
63	Bursera simarouba	Gumbo Limbo	15' to 20'	10' to 15'	8"	Fair	Transplant
64	Bursera simarouba	Gumbo Limbo	15' to 20'	10' to 15'	8"	Fair	Transplant
65	Bursera simarouba	Gumbo Limbo	15' to 20'	10' to 15'	8"	Fair	Transplant
66	Bursera simarouba	Gumbo Limbo	15' to 20'	10' to 15'	8"	Fair	Transplant
67	Palicourea	Palicourea	15' to 20'	10' to 15'	8"	Good	Transplant
68	Roystonea regia	Royal Palm	20' to 25'	15' to 20'	2"	Good	Transplant
73	Conocarpus erectus 'sericeus'	Silver Buttonwood	12' to 15'	8' to 10'	12" (Multi)	Poor	Transplant
74	Roystonea regia	Royal Palm	20' to 25'	15' to 20'	2"	Good	Transplant
75	Conocarpus erectus 'sericeus'	Silver Buttonwood	12' to 15'	8' to 10'	12" (Multi)	Poor	Transplant
76	Conocarpus erectus 'sericeus'	Silver Buttonwood	12' to 15'	8' to 10'	14" (Multi)	Poor	Transplant
111	Roystonea regia	Royal Palm	20' to 25'	15' to 20'	2"	Good	Transplant
112	Adiantum merrillii	Christmas Palm	10' to 15'	5' to 10'	10"	Fair	Transplant
113	Adiantum merrillii	Christmas Palm	10' to 15'	5' to 10'	10"	Fair	Transplant
135	Thrinax radiata	Thatch Palm	5' to 6'	3' to 4'	3"	Good	Transplant

SUNSET MARINA
KEY WEST, FLORIDA





Note:
All invasive exotic vegetation will be removed and maintained from being on the property, especially the shoreline mangrove area. Specific species include: Australian Pine, Brazilian Pepper, Melaleuca, Lead Tree and Thespesia populnea.



TREE IMPACT PLAN - EAST SIDE

SCALE: 1"=20'

NUMBER	BOTANICAL NAME	COMMON NAME	HEIGHT	SPREAD	CALIPER	CONDITION	STATUS
1	Bursera simaruba	Gumbo Limbo	15' to 20'	15' to 20'	8"	Poor	Remove
2	Bursera simaruba	Gumbo Limbo	15' to 20'	15' to 20'	8"	Poor	Remove
11	Conocarpus erectus 'sericeus'	Silver Buttonwood	15' to 20'	8' to 10'	8"	Good	Remove
52	Bursera simaruba	Gumbo Limbo	15' to 20'	10' to 15'	6"	Poor	Remove
80	Melaleuca leucadendron	Lead Tree	8' to 10'	8' to 10'	6"	Poor	Remove - Invasive Exotic
108	Roystonea regia	Royal Palm	20' to 25'	15' to 20'	10"	Poor	Remove

NOTES: Height, Spread, Caliper and location of vegetation has not been surveyed and is approximate. All vegetation scheduled to be transplanted will be transplanted within the Sunset Marina site. All invasive exotic vegetation not listed here will be removed from the site.

EXISTING TREE AND PALM TO REMAIN SCHEDULE							
NUMBER	BOTANICAL NAME	COMMON NAME	HEIGHT	SPREAD	CALIPER	CONDITION	STATUS
13	Clusia guttifera	Small Leaf Clusia	12' to 15'	10' to 15'	Multi	Good	Remain/Fertilize
14	Conocarpus erectus 'sericeus'	Silver Buttonwood	12' to 15'	8' to 10'	Multi	Good	Remain/Fertilize
15	Sabal palmetto	Sabal	20' to 25'	10' to 15'	10"	Good	Remain/Fertilize
16	Sabal palmetto	Sabal	20' to 25'	10' to 15'	10"	Good	Remain/Fertilize
17	Sabal palmetto	Sabal	20' to 25'	10' to 15'	10"	Good	Remain/Fertilize
18	Conocarpus erectus 'sericeus'	Silver Buttonwood	12' to 15'	8' to 10'	Multi	Good	Remain/Fertilize
19	Sabal palmetto	Sabal	20' to 25'	10' to 15'	10"	Good	Remain/Fertilize
20	Sabal palmetto	Sabal	20' to 25'	10' to 15'	10"	Good	Remain/Fertilize
21	Sabal palmetto	Sabal	20' to 25'	10' to 15'	10"	Good	Remain/Fertilize
22	Conocarpus erectus 'sericeus'	Silver Buttonwood	12' to 15'	8' to 10'	Multi	Good	Remain/Fertilize
23	Conocarpus erectus 'sericeus'	Silver Buttonwood	12' to 15'	8' to 10'	Multi	Good	Remain/Fertilize
24	Clusia guttifera	Small Leaf Clusia	12' to 15'	10' to 15'	Multi	Good	Remain/Fertilize
24A	Conocarpus erectus 'sericeus'	Silver Buttonwood	12' to 15'	8' to 10'	Multi	Good	Remain/Fertilize
25	Sabal palmetto	Sabal	20' to 25'	10' to 15'	10"	Good	Remain/Fertilize
26	Sabal palmetto	Sabal	20' to 25'	10' to 15'	10"	Good	Remain/Fertilize
27	Sabal palmetto	Sabal	20' to 25'	10' to 15'	10"	Good	Remain/Fertilize
30	Conocarpus erectus 'sericeus'	Silver Buttonwood	12' to 15'	8' to 10'	Multi	Good	Remain/Fertilize
34	Conocarpus erectus 'sericeus'	Silver Buttonwood	12' to 15'	8' to 10'	Multi	Good	Remain/Fertilize
35	Conocarpus erectus 'sericeus'	Silver Buttonwood	12' to 15'	8' to 10'	Multi	Good	Remain/Fertilize
36	Conocarpus erectus 'sericeus'	Silver Buttonwood	12' to 15'	8' to 10'	Multi	Good	Remain/Fertilize
37	Conocarpus erectus 'sericeus'	Silver Buttonwood	12' to 15'	8' to 10'	Multi	Good	Remain/Fertilize
38	Conocarpus erectus 'sericeus'	Silver Buttonwood	12' to 15'	8' to 10'	Multi	Good	Remain/Fertilize
39	Conocarpus erectus 'sericeus'	Silver Buttonwood	12' to 15'	8' to 10'	Multi	Good	Remain/Fertilize
40	Conocarpus erectus 'sericeus'	Silver Buttonwood	12' to 15'	8' to 10'	Multi	Good	Remain/Fertilize
41	Conocarpus erectus 'sericeus'	Silver Buttonwood	12' to 15'	8' to 10'	Multi	Good	Remain/Fertilize
42	Conocarpus erectus 'sericeus'	Silver Buttonwood	12' to 15'	8' to 10'	Multi	Good	Remain/Fertilize
43	Conocarpus erectus 'sericeus'	Silver Buttonwood	12' to 15'	8' to 10'	Multi	Good	Remain/Fertilize
44	Conocarpus erectus 'sericeus'	Silver Buttonwood	12' to 15'	8' to 10'	Multi	Good	Remain/Fertilize
45	Conocarpus erectus 'sericeus'	Silver Buttonwood	12' to 15'	8' to 10'	Multi	Good	Remain/Fertilize
46	Conocarpus erectus 'sericeus'	Silver Buttonwood	12' to 15'	8' to 10'	Multi	Good	Remain/Fertilize
55	Sabal palmetto	Sabal	20' to 25'	10' to 15'	10"	Good	Remain
55A	Thrinax radiata	Thatch Palm	5' to 8'	3' to 4'	3"	Good	Remain
55B	Thrinax radiata	Thatch Palm	5' to 8'	3' to 4'	3"	Good	Remain
56	Sabal palmetto	Sabal	20' to 25'	10' to 15'	10"	Good	Remain
57	Sabal palmetto	Sabal	20' to 25'	10' to 15'	10"	Good	Remain
58	Conocarpus erectus 'sericeus'	Silver Buttonwood	8' to 10'	8' to 10'	Multi	Poor	Remain
59	Conocarpus erectus 'sericeus'	Silver Buttonwood	8' to 10'	8' to 10'	Multi	Poor	Remain
60	Clusia guttifera	Small Leaf Clusia	15' to 20'	10' to 15'	Multi	Good	Remain
61 & 60S	No Tag	No Tag					
62	Sabal palmetto	Sabal	20' to 25'	10' to 15'	10"	Good	Remain
69	Roystonea regia	Royal Palm	20' to 25'	15' to 20'	2 1/2"	Good	Remain
70	Roystonea regia	Royal Palm	20' to 25'	15' to 20'	2 1/2"	Good	Remain
70A	Talipotentillium	Muhlenbergia	15' to 18'	12' to 16'	4"	Good	Remain - On ROW
70B	Talipotentillium	Muhlenbergia	15' to 18'	12' to 16'	4"	Good	Remain - On ROW
70C	Clusia guttifera	Small Leaf Clusia	15' to 20'	10' to 15'	Multi	Good	Remain - On ROW
70D	Clusia guttifera	Small Leaf Clusia	15' to 20'	10' to 15'	Multi	Good	Remain - On ROW
70E	Conocarpus erectus 'sericeus'	Silver Buttonwood	8' to 10'	8' to 10'	Multi	Good	Remain - On ROW
70F	Conocarpus erectus 'sericeus'	Silver Buttonwood	8' to 10'	8' to 10'	Multi	Good	Remain - On ROW
70G	Clusia guttifera	Small Leaf Clusia	15' to 20'	10' to 15'	Multi	Good	Remain - On ROW
70H	Clusia guttifera	Small Leaf Clusia	15' to 20'	10' to 15'	Multi	Good	Remain - On ROW
71	Sabal palmetto	Sabal	20' to 25'	10' to 15'	10"	Good	Remain
72	Sabal palmetto	Sabal	20' to 25'	10' to 15'	10"	Good	Remain - On ROW
77	Conocarpus erectus 'sericeus'	Silver Buttonwood	8' to 10'	8' to 10'	Multi	Poor	Remain - On ROW
78	Conocarpus erectus 'sericeus'	Silver Buttonwood	8' to 10'	8' to 10'	Multi	Poor	Remain
79	Roystonea regia	Royal Palm	20' to 25'	15' to 20'	2 1/2"	Good	Remain
81	Adiantum	Christmas Palm	10' to 15'	5' to 10'	Multi	Poor	Remain
82	Sabal palmetto	Sabal	20' to 25'	10' to 15'	10"	Good	Remain
83	Sabal palmetto	Sabal	20' to 25'	10' to 15'	10"	Good	Remain
84	Sabal palmetto	Sabal	20' to 25'	10' to 15'	10"	Good	Remain
85	Sabal palmetto	Sabal	20' to 25'	10' to 15'	10"	Good	Remain
86	Sabal palmetto	Sabal	20' to 25'	10' to 15'	10"	Good	Remain
87	Sabal palmetto	Sabal	20' to 25'	10' to 15'	10"	Good	Remain
88	Sabal palmetto	Sabal	20' to 25'	10' to 15'	10"	Good	Remain
89	Sabal palmetto	Sabal	20' to 25'	10' to 15'	10"	Good	Remain
90	Sabal palmetto	Sabal	20' to 25'	10' to 15'	10"	Good	Remain
91	Roystonea regia	Royal Palm	20' to 25'	15' to 20'	2 1/2"	Good	Remain
91A	Simarouba glauca	Paradise Tree	15' to 18'	15' to 20'	2 1/2"	Good	Remain
92	Sabal palmetto	Sabal	20' to 25'	10' to 15'	10"	Good	Remain
93	Sabal palmetto	Sabal	20' to 25'	10' to 15'	10"	Good	Remain
94	Sabal palmetto	Sabal	20' to 25'	10' to 15'	10"	Good	Remain
95	Sabal palmetto	Sabal	20' to 25'	10' to 15'	10"	Good	Remain
96	Sabal palmetto	Sabal	20' to 25'	10' to 15'	10"	Good	Remain
97	Sabal palmetto	Sabal	20' to 25'	10' to 15'	10"	Good	Remain
98	Sabal palmetto	Sabal	20' to 25'	10' to 15'	10"	Good	Remain
99	Adiantum	Christmas Palm	10' to 15'	5' to 10'	Multi	Poor	Remain
99A	Adiantum	Christmas Palm	10' to 15'	5' to 10'	Multi	Poor	Remain
100	Sabal palmetto	Sabal	20' to 25'	10' to 15'	10"	Good	Remain
101	Sabal palmetto	Sabal	20' to 25'	10' to 15'	10"	Good	Remain
102	Sabal palmetto	Sabal	20' to 25'	10' to 15'	10"	Good	Remain
103	Sabal palmetto	Sabal	20' to 25'	10' to 15'	10"	Good	Remain
104	Sabal palmetto	Sabal	20' to 25'	10' to 15'	10"	Good	Remain
105	Sabal palmetto	Sabal	20' to 25'	10' to 15'	10"	Good	Remain
106	Sabal palmetto	Sabal	20' to 25'	10' to 15'	10"	Good	Remain
107	Sabal palmetto	Sabal	20' to 25'	10' to 15'	10"	Good	Remain
108	Roystonea regia	Royal Palm	20' to 25'	15' to 20'	2 1/2"	Good	Remain
109	Adiantum	Christmas Palm	10' to 15'	5' to 10'	Multi	Poor	Remain
110	Adiantum	Christmas Palm	10' to 15'	5' to 10'	Multi	Poor	Remain
114	Roystonea regia	Royal Palm	20' to 25'	15' to 20'	2 1/2"	Good	Remain
115	Wrightia	Paradise Tree	15' to 18'	15' to 20'	2 1/2"	Good	Remain
116	Wrightia	Paradise Tree	15' to 18'	15' to 20'	2 1/2"	Good	Remain
117	Clusia guttifera	Small Leaf Clusia	15' to 20'	10' to 15'	Multi	Good	Remain
118	Clusia guttifera	Small Leaf Clusia	15' to 20'	10' to 15'	Multi	Good	Remain
119	Clusia guttifera	Small Leaf Clusia	15' to 20'	10' to 15'	Multi	Good	Remain
120	Clusia guttifera	Small Leaf Clusia	15' to 20'	10' to 15'	Multi	Good	Remain
121	Thrinax radiata	Thatch Palm	5' to 8'	3' to 4'	3"	Good	Remain
121A	Thrinax radiata	Thatch Palm	5' to 8'	3' to 4'	3"	Good	Remain
121B	Thrinax radiata	Thatch Palm	5' to 8'	3' to 4'	3"	Good	Remain
121C	Thrinax radiata	Thatch Palm	5' to 8'	3' to 4'	3"	Good	Remain
121D	Thrinax radiata	Thatch Palm	5' to 8'	3' to 4'	3"	Good	Remain
122	Thrinax radiata	Thatch Palm	5' to 8'	3' to 4'	3"	Good	Remain
123	Sabal palmetto	Sabal	20' to 25'	10' to 15'	10"	Good	Remain
124	Sabal palmetto	Sabal	20' to 25'	10' to 15'	10"	Good	Remain
125	Clusia guttifera	Small Leaf Clusia	15' to 20'	10' to 15'	Multi	Good	Remain
126	Clusia guttifera	Small Leaf Clusia	15' to 20'	10' to 15'	Multi	Good	Remain
127	Sabal palmetto	Sabal	20' to 25'	10' to 15'	10"	Good	Remain
128	Sabal palmetto	Sabal	20' to 25'	10' to 15'	10"	Good	Remain
129	Sabal palmetto	Sabal	20' to 25'	10' to 15'	10"	Good	Remain
130	Sabal palmetto	Sabal	20' to 25'	10' to 15'	10"	Good	Remain
131	Sabal palmetto	Sabal	20' to 25'	10' to 15'	10"	Good	Remain
132	Clusia guttifera	Small Leaf Clusia	15' to 20'	10' to 15'	Multi	Good	Remain
133	Sabal palmetto	Sabal	20' to 25'	10' to 15'	10"	Good	Remain
134	Clusia guttifera	Small Leaf Clusia	15' to 20'	10' to 15'	Multi	Good	Remain
135	Clusia guttifera	Small Leaf Clusia	15' to 20'	10' to 15'	Multi	Good	Remain
137	Clusia guttifera	Small Leaf Clusia	15' to 20'	10' to 15'	Multi	Good	Remain
138	Clusia guttifera	Small Leaf Clusia	15' to 20'	10' to 15'	Multi	Good	Remain
139	Clusia guttifera	Small Leaf Clusia	15' to 20'	10' to 15'	Multi	Good	Remain
140	Suriana maritima	Bay Cedar	3' to 5'	4' to 6'	4"	Good	Remain

EXISTING TREE AND PALM TO TRANSPORT ON SITE SCHEDULE							
NUMBER	BOTANICAL NAME	COMMON NAME	HEIGHT	SPREAD	CALIPER	CONDITION	STATUS
3	Conocarpus erectus 'sericeus'	Silver Buttonwood	20' to 25'	10' to 15'	10"	Good	Transplant
5	Conocarpus erectus 'sericeus'	Silver Buttonwood	6' to 8'	4' to 5'	Multi (Hedge)	Good	Transplant
6	Conocarpus erectus 'sericeus'	Silver Buttonwood	6' to 8'	4' to 5'	Multi (Hedge)	Good	Transplant
7	Conocarpus erectus 'sericeus'	Silver Buttonwood	6' to 8'	4' to 5'	Multi (Hedge)	Good	Transplant
8	Sabal palmetto	Sabal	20' to 25'	10' to 15'	10"	Good	Transplant
9	Sabal palmetto	Sabal	20' to 25'	10' to 15'	10"	Good	Transplant
10	Sabal palmetto	Sabal	20' to 25'	10' to 15'	10"	Good	Transplant
12	Sabal palmetto	Sabal	20' to 25'	10' to 15'	10"	Good	Transplant
28	Conocarpus erectus 'sericeus'	Silver Buttonwood	20' to 25'	10' to 15'	10"	Good	Transplant
29A	Bursera simaruba	Gumbo Limbo	10' to 15'	10' to 15'	8"	Fair	Transplant
29B	Bursera simaruba	Gumbo Limbo	10' to 15'	10' to 15'	8"	Fair	Transplant
31	Conocarpus erectus 'sericeus'	Silver Buttonwood	12' to 15'	8' to 10'	8"	Good	Remain/Fertilize
32	Conocarpus erectus 'sericeus'	Silver Buttonwood	12' to 15'	8' to 10'	8"	Good	Remain/Fertilize
33	Conocarpus erectus 'sericeus'	Silver Buttonwood	12' to 15'	8' to 10'	8"	Good	Remain/Fertilize
47	Sabal palmetto	Sabal	20' to 25'	10' to 15'	10"	Good	Transplant
48	Sabal palmetto	Sabal	20' to 25'	10' to 15'	10"	Good	Transplant
49	Sabal palmetto	Sabal	20' to 25'	10' to 15'	10"	Good	Transplant
50	Sabal palmetto	Sabal	20' to 25'	10' to 15'	10"	Good	Transplant
51	Sabal palmetto	Sabal	20' to 25'	10' to 15'	10"	Good	Transplant
53	Sabal palmetto	Sabal	20' to 25'	10' to 15'	10"	Good	Transplant
54	Sabal palmetto	Sabal	20' to 25'	10' to 15'	10"	Good	Transplant
63	Bursera simaruba	Gumbo Limbo	15' to 20'	10' to 15'	8"	Fair	Transplant
64	Bursera simaruba	Gumbo Limbo	15' to 20'	10' to 15'	8"	Fair	Transplant
65	Bursera simaruba	Gumbo Limbo	15' to 20'	10' to 15'	8"	Fair	Transplant
66	Bursera simaruba	Gumbo Limbo	15' to 20'	10' to 15'	8"	Fair	Transplant
67	Ficus religiosa	Fig Tree	15' to 20'	10' to 15'	8"	Fair	Transplant
68	Roystonea regia	Royal Palm	20' to 25'	15' to 20'	2 1/2"	Good	Transplant
73	Conocarpus erectus 'sericeus'	Silver Buttonwood	8' to 10'	8' to 10'	12" (Multi)	Poor	Transplant
74	Roystonea regia	Royal Palm	20' to 25'	15' to 20'	2 1/2"	Good	Transplant
75	Conocarpus erectus 'sericeus'	Silver Buttonwood	8' to 10'	8' to 10'	12" (Multi)	Poor	Transplant
76	Conocarpus erectus 'sericeus'	Silver Buttonwood	8' to 10'	8' to 10'	12" (Multi)	Poor	Transplant
111	Roystonea regia	Royal Palm	20' to 25'	15' to 20'	2 1/2"	Good	Transplant
112	Adiantum	Christmas Palm	10' to 15'	5' to 10'	Multi	Poor	Transplant
113	Adiantum	Christmas Palm	10' to 15'	5' to 10'	Multi	Poor	Transplant
115	Thrinax radiata	Thatch Palm	5' to 8'	3' to 4'	3"	Good	Transplant

SUNSET MARINA