



Work Change Directive Proposal
Truman Waterfront Park Phase 1A
 ITB 15-022
 P.O. #

DATE: 6/13/16

Location: Truman Waterfront Park, Key West
Scope: Misc Scope Adjustments (FCD 003)

ITEMIZED QUANTITIES
WCD 3

Item	Description	Quantity	Units	Cost per Unit	Line Item Cost	Notes	
DEDUCT	ASPHALT PAVEMENT (CG03-04)						
	Asphalt Pavement	46.0	TON	\$ 225.00	\$ 10,350.00		
DEDUCT	LIMEROCK BASE (CG03-04)						
	8" Limerock Base	500.0	SY	\$ 17.00	\$ 8,500.00		
DEDUCT	CROSSWALK PAVERS (CG03-04)						
	Pavers	240.0	SF	\$ 9.50	\$ 2,280.00		
DEDUCT	CONCRETE BANDS AT CROSSWALK (CG03-04)						
	Ribbon Curbing	60.0	LF	\$ 30.00	\$ 1,800.00		
DEDUCT	LANDSCAPING						
	Misc. Landscaping Trees/Shrubs	1.0	LS	\$ 5,060.00	\$ 5,060.00		
DEDUCT	IRRIGATION						
	All Irrigation Deduct/ Cost Revisions will be reflected in FCD-004						
Subtotal					\$ 27,990.00	DEDUCT	
1	Performance/Payment Bonds (\$20.00/Thousand)	1	LS	\$20.00/Thousand	\$ -		
2	Mobilization/Demobilization	1	LS	5% of Total			
Total					\$ 27,990.00	DEDUCT	
Notes:	All costs shown are deductive						
Prepared by:	Andrew Toppino						
	Estimator						
	Charley Toppino & Sons, Inc.					WCD	1
						Sheet	1 of 1
Date:	6/13/16						

From: [Andrew Toppino](#)
To: [Andi Fraley](#)
Subject: Fwd: FCD003 Truman Waterfront Park
Date: Monday, June 13, 2016 7:49:01 AM

----- Forwarded message -----

From: **Andrew Toppino** <ajtoppino@gmail.com>
Date: Mon, Jun 6, 2016 at 3:27 PM
Subject: FCD003 Truman Waterfront Park
To: Evan Bell - Ecoscapes <ldg5@bellsouth.net>, Andi Fraley <andif@toppkw.com>

Evan,

I need deductive cost impacts for FCD003 at Truman Waterfront ASAP.

It looks like they have removed a good amount of trees, etc.. Take a look at the plant material list (LL-08).

Thanks!

 [FCD03_Parking@Seagrape \(1\).pdf](#) 

--

Andrew Toppino
Estimator

Charley Toppino & Sons
Office: [\(305\)-296-5606](tel:(305)296-5606)
Fax: [\(305\)-296-5189](tel:(305)296-5189)
Monroe Concrete Products
Office: [\(305\)-296-9934](tel:(305)296-9934)
Fax: [\(305\)-296-2396](tel:(305)296-2396)

Cell: [\(305\)-797-5839](tel:(305)797-5839)
AJToppino@gmail.com



Charleytoppinoandsons.com

The information contained in this transmission may contain privileged and confidential content. It is intended only for the use of the person(s) named above. If you are not the intended recipient, you are hereby notified that any review, dissemination, distribution or duplication of this communication is strictly prohibited.

--

Andrew Toppino
Estimator

Charley Toppino & Sons
Office: (305)-296-5606
Fax: (305)-296-5189
Monroe Concrete Products
Office: (305)-296-9934
Fax: (305)-296-2396

Cell: (305)-797-5839
AJToppino@gmail.com



Charleytoppinoandsons.com

The information contained in this transmission may contain privileged and confidential content. It is intended only for the use of the person(s) named above. If you are not the intended recipient, you are hereby notified that any review, dissemination, distribution or duplication of this communication is strictly prohibited.



Bermello Ajamil & Partners, Inc.

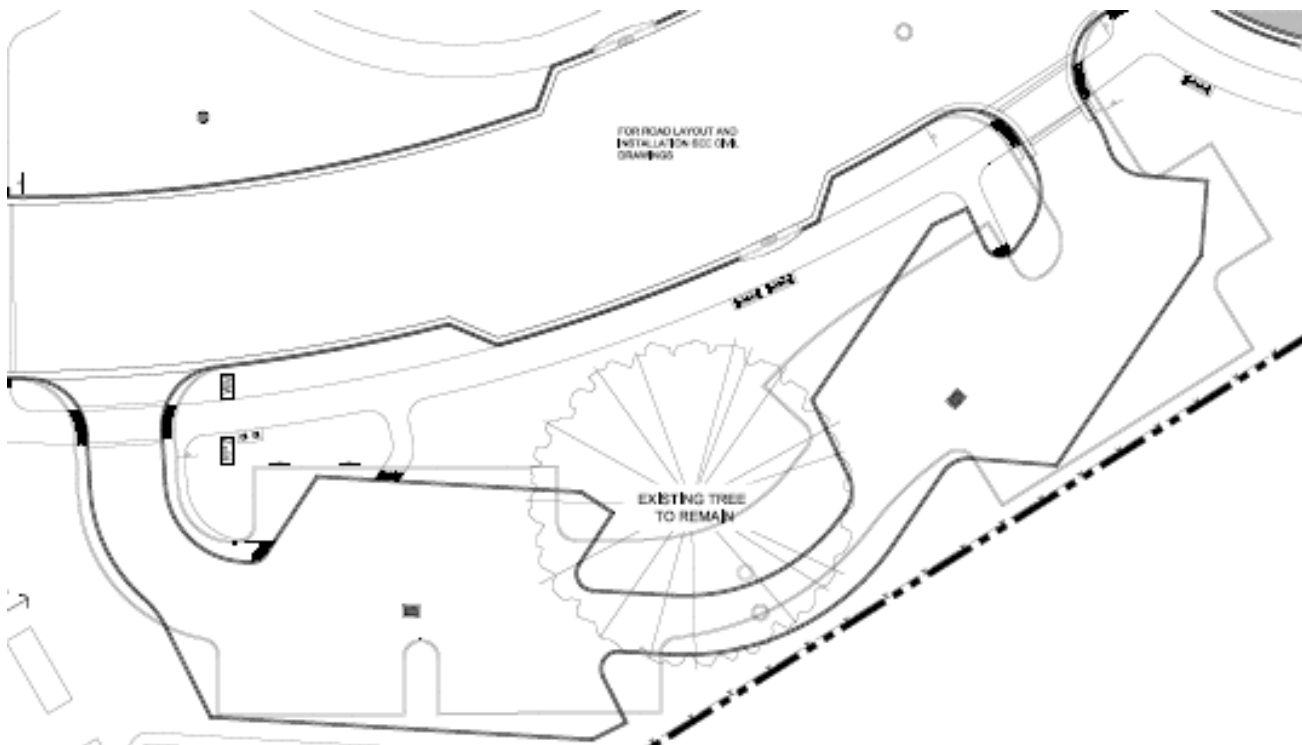
MEMORANDUM

Architecture
Engineering
Planning
Interior Design
Landscape Architecture

1 of 3

To:	Andi Fraley, AIA, LEED AP Senior Project Manager	Date:	April 11, 2016
Organization:	Charley Toppino & Sons		
Project Name:	Truman Waterfront Park		
RE:	Summary of Delta 3 Drawing Revisions		
BA Project No:	14041		
From:	Kirk J. Olney, RLA Senior Landscape Architect 305-860-3709		
CC:	File Randy Hollingworth – Bermello Ajamil & Partners Inc. Jim Bouquet – City of Key West Director of Engineering Terry Justice – City of Key West Construction Coordinator Gary Volenec – City of Key West City Engineer Allen Perez – Perez Engineering & Development Brandon O'Flynn – Perez Engineering & Development		

The Delta 3 drawing revisions generally consist of reconfiguring the parking near the existing Seagrape tree (described as Tree No. 38 on LT-05 and LT-06) along the east side of the property from square spaces with two-way traffic (the lighter edge of pavement below) to angled spaces with one-way traffic (the darker edge of pavement lines below). The diagram below shows the general shift of the road alignment from the bidding documents, shown in light gray lines to the current design, shown with black lines:



This change consists of a parking lot reconfiguration and lies to the east of and is adjacent to the section of the southerly spine road between stations 21+00 and 24+00. This change also incorporates a modification of the exfiltration trench system near Ficus #41 located to the Southwest of the Southard Street roundabout at the main entrance to the park. While every effort has been made to create a summary of all of the changes made during this revision, the contractor shall examine the plans and note any additional changes.

Specific Civil Engineering Delta 3 drawing revisions include:

1. New alignment of access road that provides the baseline for reconfigured parking stalls.
2. Locations of modified entrance/exit to the said access road for reconfigured parking lot.
3. Said access road was modified to be a one-way road with 60-degree parking stalls as opposed to the previous design of a two-way road with 90-degree parking stalls.
4. Two accessible aisles were reconfigured, as well as the associated signage and pavement markings.
5. Storm structures ST-32, ST-35, ST-36, & ST-37 have changed positions horizontally and have been rotated to meet the new alignment of the road.
 - o Elevations and inverts have remained the same for said structures.
 - o Pipe lengths have changed due to the reconfiguration.
 - o Storm Pipes running from ST-33 to ST-32 & from ST-38 to ST-36 will have to be rotated to meet the new configuration.
6. Grading has changed due to reconfiguration of the said parking lot, see sheets CP-03 & CP-05 for details.
7. Locations of FDOT Type D curb have changed due to said reconfigured parking lot. See sheets CP-03 & CP-05.
8. Retention Area E was reconfigured to accommodate changes to said parking lot. See Sheet CP-05.
9. Pavement markings in the previously described area have been moved to align with the modified roadway and should be examined by referencing sheets CM-03 & CM-05.
10. 24" White stop bar & R1-1 stop sign has been removed from the entrance to the said access road (southerly access point). See Sheet CM-05.
11. Two (2) one way signs (one sign post) have been added to the entrance to the said access road (southerly access point). See Sheet CM-05.
12. 24" White stop bar has been extended across entire road at the exit of said access road (northerly access point). See Sheet CM-03.

13. R5-1 Do Not Enter sign was added on the opposing side of the existing R1-1 Stop sign at the exit of said access road and the sign post adjusted horizontally to align with said access road (northerly access point). See Sheet CM-03.
14. Addition of Thirty (30) wheel stops for parking spaces.
15. Horizontal and vertical location of nyloplast yard basin nearest said Ficus #41 has changed, which also changes the direction of the exfiltration trench that connects to said basin. See Sheet CP-03 for details.
16. One segment of the said exfiltration trench connected to and running to the Northwest of the previously described inlet nearest Ficus #41 has been eliminated. See Sheet CP-03 for details.

Specific Landscape Architectural Delta 3 drawing revisions include:

1. Sidewalk connections to parking lot
2. Location of raised dome pavers
3. Furniture pad locations
4. New location for relocated trees 42, 43 and 46
5. Location of trees, shrub beds and hedges
6. Addition of fruit trees
7. Sod quantities
8. Plant quantities on LL-08
9. Irrigation spray and bubbler locations (revised drawings anticipated April 15, 2016).

Field adjustments will need to be made to light pole locations.

FIELD CHANGE DIRECTIVE
No. 03

PROJECT: Truman Waterfront Park Phase 1A

DATE OF ISSUANCE: 26 April 2016

EFFECTIVE DATE: 26 April 2016

OWNER: **City of Key West**

OWNER's Project Number: GR0703/SE1505/TR0501

CONTRACTOR: **Charley Toppino & Sons**

Project Mgr.: Jim Bouquet / Terry Justice

You are directed to proceed promptly with the following change(s):

Description: **Implement design change of parking near seagrape tree #38 as per revised drawings.**

Purpose of Change Directive: **Please proceed with the following modifications to proposed work:**

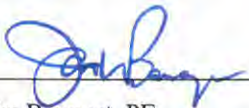
In response to RFI007, modify paved parking area and affected structures near seagrape tree #38 as per the attached revised drawing Sheets 03 and 05 of the following series: CG, CP, CM, LH, IB, IM, in addition to CR-03 and ID-01. In response to RFI 008, incorporate landscaping changes and eliminate one section of exfiltration trench near ficus tree #41.

If a claim is made that the above change(s) have affected Contract Price or Contract Times any claim for a Change Order based thereon will involve one or more of the following methods of determining the effect of the change(s).

Estimated change in Contract Price: **None**

Estimated increase in Contract Times: **None**

(1) APPROVED BY:



Jim Bouquet, PE
Director of Engineering

(2) AUTHORIZED BY:



Authorized Signature
Jim Scholl
City Manager