



ENGINEERING
ENVIRONMENTAL
ECOLOGICAL

January 12, 2017

Francisco J. Alonso, PE
Associate Vice President, Miami Unit Manager
T.Y. Lin International Group (TY Lin)
201 Alhambra Circle, Suite 900
Coral Gables, FL 33134

**Subject: Arborist Assessment Report
Higgs Beach Park at Atlantic Boulevard
Key West, Monroe County, Florida
E Sciences Project Number 7-0313-001**

Dear Mr. Alonso:

E Sciences, Incorporated (E Sciences) is pleased to provide you with this Arborist Assessment Report for the above-referenced property (the Site). This report was prepared in general accordance with E Sciences' proposal number 7-0313-P01 dated October 20th, 2016.

Background Information

E Sciences' understanding of the project is based upon a telephone conversation between Ms. Leticia Fernandez-Beraud, RLA and Justin Freedman of our Miami office on October 19th, 2016 and Ms. Fernandez-Beraud's subsequent email describing the project and providing the project's tree disposition table. Ms. Fernandez-Beraud also spoke with Brian Voelker of our Fort Lauderdale office on January 1st, 2017 and subsequently provided Mr. Voelker with "tree disposition" plans in PDF format and an existing tree data table in Microsoft Excel format (both dated November 28th, 2016).

Per these discussions, we understand that the City of Key West requested a report be prepared by an ISA Certified Arborist assessing approximately 388 trees and palms proposed for preservation and approximately 110 trees proposed for relocation within the Site. The Site is located on the north side of Atlantic Boulevard between Reynolds Street and White Street.

Assessment

Brian Voelker, an E Sciences' ISA Certified Arborist, visited the Site on January 5th, 2017 to visually assess trees proposed to remain or be relocated as identified in the aforementioned tree disposition plans and tree data tables.

The trees were assessed through visual observation of above-ground tree features, including surface roots, trunks, and canopies (branches, foliage, etc.). Based on these assessments, individual trees

E Sciences, INCORPORATED
111 NE First Street, Suite 906 • Miami, FL 33132
ph 786-517-2632 fax 305-397-1556
www.esciencesinc.com

were assigned a general condition with up to three defects recorded (if applicable) to support the condition rating. Remediation recommendations (up to two per tree) were also recorded where applicable. Additional comments were recorded for select trees, including those trees where E Sciences' determined that the proposed disposition (i.e. "Remain", "Remove", or "Relocate") should be re-considered based on the tree's condition or relative ecological/aesthetic value.

E Sciences modified the original November 28th, 2016 tree table by adding our comments within the red outlined box on the attached table. Also, where the disposition was proposed to be modified, the values in the "Disposition" column and subsequent mitigation columns were adjusted accordingly (see **Attachment 1 – Tree Data Table with E Sciences Comments**). Adjusted fields are in bold.

Photographs were taken for trees with proposed disposition changes, as well as select trees with certain defects (e.g. discolored foliage, utility line conflicts, etc.) to provide photographic examples of these defects (see **Attachment 2 – Photo Pages**).

Findings

Trees Proposed to be Relocated

E Sciences determined that trees proposed for relocation were suitable candidates, with the exception of three trees (numbers 187, 209, and 214). These three trees were determined to be in poor condition due to a variety of defects (i.e. significant canopy reduction, significant defoliation, etc.). Based on the poor condition of these trees, relocation is not recommended due to the reduced likelihood of transplant survival. The "disposition" values of these trees, along with the corresponding mitigation values, were adjusted accordingly in the tree data table (see **Attachment 1**).

Trees Proposed to Remain

E Sciences determined that trees proposed to remain were in adequate condition to warrant preservation and protection during construction. Select condition ratings were adjusted slightly to reflect current conditions and obvious notable defects. Recommendations for remediation, including utility clearance pruning, structure pruning, and fertilization were also provided where appropriate.

However, one tree proposed to "remain" (number 229) was found to be in poor condition (i.e. major limb damage). The disposition for this tree was changed to "remove" on the tree data table due to the reduced likelihood of transplant survival.

Supplemental Observations – Trees Proposed for Removal

Although not specifically outlined in the proposal, E Sciences also assessed those trees proposed for removal per telephone conversations with Ms. Fernandez-Beraud. The assessment of trees proposed for removal was performed primarily to identify trees that fell into two categories:

- Category 1 - Trees proposed for removal based on poor condition alone (i.e. not in conflict with construction) that may be in suitable condition to preserve and remediate.
- Category 2 - Trees proposed for removal due to construction conflicts that are in good condition and are providing high aesthetic or ecological functions (i.e. large, healthy canopies for shade and wildlife habitat) and therefore may warrant preservation.

Three Category 1 trees (numbers 200B, 473, and 507) were found to be in fair or better condition with issues including slightly lopsided canopies, sprouting/stubs, and recumbent growth form. No significant structural damage or decay was observed with these trees that would indicate a higher likelihood of failure. Consequently, these trees should be considered for preservation vs. removal, with remediation efforts (e.g. structural pruning, crown cleaning) performed where recommended.

Five Category 2 trees (numbers 187, 271, 400, 403, and 420B), including green buttonwood (*Conocarpus erectus*), mahogany (*Swietenia mahagoni*), and tropical almond (*Terminalia catappa*) were determined to be in good condition and displayed relatively large, healthy canopies providing excellent shade, habitat and aesthetic values. Although tropical almond is listed as a Florida Exotic Pest Plant Council (FLEPPC) Category II tree (i.e. considered “somewhat” invasive), this particular tree is not anticipated to spread and outcompete native vegetation in a manicured park setting (i.e. active mowing between trees). Based on the conditions and values of these trees, E Sciences recommends that design alterations be considered (if practicable) to avoid impacts to these trees and preserve them in place, performing remediation pruning where recommended.

Additional Observations

In addition to the aforementioned assessments, E Sciences provided updates to the tree data table to address the following items:

- Addition of species names where they were missing
- Correction of species names where they were incorrect
- Correction of proposed disposition on table where it did not match symbol on map
- Addition of one tree (number 378B) to the tree table that was not on tree disposition plan or table (see **Attachment 3 – Tree Disposition Plan Mark Up** for tree location).

Please note that although proposed tree dispositions were modified where appropriate on the tree data table, the corresponding tree symbols were not modified on the tree disposition plans.

We appreciate the opportunity to provide you with this Arborist Assessment Report. If you have any questions or comments, please contact us at 954-484-8500.

Sincerely,

E SCIENCES, INCORPORATED



Brian Voelker
Senior Scientist



Justin Freedman
Project Manager

Attachments:

1. Tree Data Table with E Sciences' Comments
2. Photo Pages
3. Tree Disposition Plan Mark Up

ATTACHMENT 1

Tree Data Table with E Sciences' Comments

Higgs Beach Park at Atlantic Boulevard																										
November 28th, 2016 Tree Disposition Table (updated per E Sciences' field assessment on January 5th, 2017)																										
E SCIENCES' NOTES														Note - columns updated per E Sciences' recommended change to disposition (edits in bold text)												
Sheet No.	Tree #	Botanical Name	Common Name	Caliper (in)	Height (ft)	Spread (ft)	CONDITION	Defect 1	Defect 2	Defect 3	Recommendation 1	Recommendation 2	Comments	Photo # (if applicable)	Condition	Disposition			Canopy Tree- Remove	Native Palms- Remove	Non-Native Palms- Remove-MITIGATE	Canopy- Transplant	Palms- Transplant	Inv/Unreg - Remove		
LD-03	100	Cocos nucifera	Coconut Palm				Good										Remain									
LD-03	101	Cocos nucifera	Coconut Palm				Good										Remain									
LD-03	102	Cocos nucifera	Coconut Palm				Good										Remain									
LD-03	103	Cocos nucifera	Coconut Palm				Good										Remain									
LD-03	104	Cocos nucifera	Coconut Palm				Good										Remain									
LD-03	105	Cocos nucifera	Coconut Palm				Good										Remain									
LD-03	106	Cocos nucifera	Coconut Palm		25 GW		Good										Relocate						1			
LD-03	107	Cocos nucifera	Coconut Palm		27 GW		Good										Relocate						1			
LD-03	108	Cocos nucifera	Coconut Palm		22 GW		Good										Relocate						1			
LD-03	109	Cocos nucifera	Coconut Palm				Good										Remain									
LD-03	110	Washingtonia robusta	Washington Palm		12 GW		Good								In the way of construction		Remove				1					
LD-03	111	Washingtonia robusta	Washington Palm		24 GW		Good								In the way of construction		Remove				1					
LD-03	112	Washingtonia robusta	Washington Palm		16 GW		Good								In the way of construction		Remove				1					
LD-03	112A	Thespesia populnea	Portia		25-35		N/A								LARGE CLUMP / INVASIVE - No mitigation required		Remove							1		
LD-03	112B	Bursera simaruba	Gumbo Limbo				Fair	Co-Dominant Leaders, Included Bark	Growing on Fence		Modify Fence				2		Remain									
LD-03	112C	Thespesia populnea	Portia		30-40		N/A								LARGE CLUMP / INVASIVE - No mitigation required		Remove							1		
LD-03	113	Not used					N/A																			
LD-03	114	Cocos nucifera	Coconut Palm				Good										Remain									
LD-03	115	Cocos nucifera	Coconut Palm				Good										Remain									
LD-03	116	Cocos nucifera	Coconut Palm				Good	Utility Line Conflict			Clearance Pruning				1		Remain									
LD-03	117	Cocos nucifera	Coconut Palm				Good										Remain									
LD-03	118	Cocos nucifera	Coconut Palm				Good										Remain									
LD-03	119	Cocos nucifera	Coconut Palm				Good										Remain									
LD-03	120	Cocos nucifera	Coconut Palm		20 GW		Good										Relocate						1			
LD-03	121	Cocos nucifera	Coconut Palm				Good										Remain									
LD-03	122	Cocos nucifera	Coconut Palm				Good										Remain									
LD-03	123	Cocos nucifera	Coconut Palm				Good										Remain									
LD-03	124	Cocos nucifera	Coconut Palm				Good										Remain									
LD-03	125	Cocos nucifera	Coconut Palm				Good										Remain									
LD-03	126	Cocos nucifera	Coconut Palm				Good										Remain									
LD-03	127	Cocos nucifera	Coconut Palm				Good										Remain									
LD-03	128	Cocos nucifera	Coconut Palm				Good										Remain									
LD-03	129	Cocos nucifera	Coconut Palm				Fair	Nutrient Deficiency			Fertilization				3		Remain									
LD-03	130	Cocos nucifera	Coconut Palm				Fair	Nutrient Deficiency			Fertilization				4		Remain									
LD-03	131	Cocos nucifera	Coconut Palm				Good										Remain									
LD-03	132	Cocos nucifera	Coconut Palm				Good										Remain									
LD-03	133	Cocos nucifera	Coconut Palm				Good										Remain									
LD-03	134	Cocos nucifera	Coconut Palm				Good										Remain									
LD-03	135	Cocos nucifera	Coconut Palm				Good										Remain									
LD-03	136	Cocos nucifera	Coconut Palm				Good										Remain									
LD-03	137	Cocos nucifera	Coconut Palm				Good										Remain									
LD-03	138	Cocos nucifera	Coconut Palm				Good										Remain									
LD-03	139	Cocos nucifera	Coconut Palm				Good										Remain									
LD-03	140	Cocos nucifera	Coconut Palm				Good										Remain									
LD-03	141	Cocos nucifera	Coconut Palm		XX GW		Fair	Nutrient Deficiency			Fertilization					FAIR CONDITION -In the way of construction	Relocate						1			
LD-03	142	Cocos nucifera	Coconut Palm		11 GW		Good									FAIR CONDITION -In the way of construction	Relocate						1			
LD-03	143	Not used					N/A																			
LD-03	144	Cocos nucifera	Coconut Palm		7 GW		Poor	Nutrient Deficiency								BAD CONDITION		Remove				1				
LD-03	145	Cocos nucifera	Coconut Palm		9 GW		Good/Fair									FAIR CONDITION -In the way of construction	Relocate						1			
LD-03	146	Cocos nucifera	Coconut Palm		13 GW		Good/Fair									FAIR CONDITION -In the way of construction	Relocate						1			
LD-03	147	Cocos nucifera	Coconut Palm		9 GW		Good/Fair									FAIR CONDITION -In the way of construction	Relocate						1			
LD-03	148	Cocos nucifera	Coconut Palm		6 GW		Good/Fair									FAIR CONDITION -In the way of construction	Relocate						1			
LD-03	149	Cocos nucifera	Coconut Palm				Good										Remain									
LD-03	150	Cocos nucifera	Coconut Palm				Fair	Nutrient Deficiency			Fertilization						Remain									
LD-03	151	Cocos nucifera	Coconut Palm				Fair	Nutrient Deficiency			Fertilization						Remain									
LD-03	152	Cocos nucifera	Coconut Palm				Fair	Nutrient Deficiency			Fertilization						Remain									
LD-03	153	Cocos nucifera	Coconut Palm				Fair	Nutrient Deficiency			Fertilization						Remain									
LD-03	154	Cocos nucifera	Coconut Palm				Fair	Nutrient Deficiency			Fertilization						Remain									
LD-03	155	Cocos nucifera	Coconut Palm				Fair	Nutrient Deficiency	Utility Line Conflict		Fertilization	Clearance Pruning					Remain									
LD-03	156	Cocos nucifera	Coconut Palm				Fair	Nutrient Deficiency			Fertilization						Remain									
LD-03	156A	Casuarina equisetifolia	Australian Pine		25-30		N/A									INVASIVE - No mitigation required		Remove						1		
LD-03	157	Cocos nucifera	Coconut Palm				Good										Remain									
LD-03	158	Cocos nucifera	Coconut Palm																							

Higgs Beach Park at Atlantic Boulevard

November 28th, 2016 Tree Disposition Table (updated per E Sciences' field assessment on January 5th, 2017)

							E SCIENCES' NOTES								Note - columns updated per E Sciences' recommended change to disposition (edits in bold text)									
Sheet No.	Tree #	Botanical Name	Common Name	Caliper (in)	Height (ft)	Spread (ft)	CONDITION	Defect 1	Defect 2	Defect 3	Recommendation 1	Recommendation 2	Comments	Photo # (if applicable)	Condition	Disposition			Canopy Tree-Remove	Native Palms-Remove	Non-Native Palms-Remove-MITIGATE	Canopy-Transplant	Palms-Transplant	Inv/Unreg - Remove
LD-03	174	Cocos nucifera	Coconut Palm		14 GW		Good								FAIR CONDITION -In the way of construction		Relocate						1	
LD-03	175	Cocos nucifera	Coconut Palm		15 GW		Good								FAIR CONDITION -In the way of construction		Relocate						1	
LD-03	176	Cocos nucifera	Coconut Palm		22 GW		Good								FAIR CONDITION-As part of Coconut grouping		Relocate						1	
LD-03	177	Cocos nucifera	Coconut Palm		24 GW		Good								FAIR CONDITION -In the way of construction		Relocate						1	
LD-03	178	Cocos nucifera	Coconut Palm		12, 14 GW		Fair	Nutrient Deficiency			Fertilization				FAIR CONDITION - DOUBLE TRUNK		Relocate						1	
LD-03	179	Casuarina equisetifolia	Australian Pine	3	50	30	N/A								INVASIVE - No mitigation required			Remove						1
LD-03	180	Swietenia mahagoni	Mahogany	8	16	15	Good/Fair	Defoliated (Minor)	Stubs		Fertilization	Crown Cleaning		7	LOSING CANOPY-To be evaluated by a Certified Arb.		Relocate					1		
LD-03	181	Swietenia mahagoni	Mahogany	8	16	12	Good								GOOD	Remain								
	182	Not used					N/A																	
	183	Not used					N/A																	
LD-03	184	Swietenia mahagoni	Mahogany	10	20	14	Good/Fair	Co Dominant Leaders, Included Bark			Structure Pruning				FAIR CONDITION -In the way of construction		Relocate					1		
LD-03	185	Swietenia mahagoni	Mahogany	4	14	12	Good								REMAINS IF HARDSCAPE IS REVISED	Remain								
LD-03	186	Bursera simaruba	Gumbo Limbo	6	12	8	Poor	Reduced Canopy (Major)					Consider Removal Due to Condition		FAIR CONDITION -In the way of construction			Remove	1					
LD-03	187	Terminalia catappa	Tropical Almond	48	60	60	Good	Co Dominant Leaders, Included Bark	Sprouts		Crown Cleaning		Consider Keeping (REMAIN)	8	FAIR CONDITION -In the way of construction	Remain								
LD-03	188	Bursera simaruba	Gumbo Limbo				Fair	Defoliated (Minor)			Fertilization				FAIR CONDITION -In the way of construction		Relocate					1		
LD-03	188A	Cocos nucifera	Coconut Palm				Good									Remain								
LD-04	189	Cocos nucifera	Coconut Palm				Good									Remain								
LD-04	190	Cocos nucifera	Coconut Palm				Good									Remain								
LD-04	191	Coccoloba uvifera	Sea Grape				Good/Fair	Lopsided Canopy	Utility Line Conflict		Structure Pruning	Crown Cleaning				Remain								
LD-04	191A	Coccoloba uvifera	Sea Grape				Good/Fair	Lopsided Canopy	Utility Line Conflict		Structure Pruning	Crown Cleaning				Remain								
LD-04	191B	Coccoloba uvifera	Sea Grape				Good/Fair	Lopsided Canopy	Utility Line Conflict		Structure Pruning	Crown Cleaning				Remain								
LD-04	192	Thespesia populnea	Portia				N/A								LARGE CLUMP / INVASIVE - No mitigation required			Remove						1
LD-04	193	Conocarpus erectus sericeus	Silver Buttonwood				Good									Remain								
LD-04	194	Conocarpus erectus sericeus	Silver Buttonwood				Good									Remain								
LD-04	195	Ptychosperma elegans	Alexander Palm				Fair	Discolored Foliage			Fertilization					Remain								
LD-04	196	Cocos nucifera	Coconut Palm				Good/Fair	Discolored Foliage			Fertilization					Remain								
LD-04	197	Casuarina equisetifolia	Australian Pine				N/A								INVASIVE - No mitigation required			Remove						1
LD-04	198	Thespesia populnea	Portia				N/A								LARGE CLUMP / INVASIVE - No mitigation required			Remove						1
LD-04	199	Conocarpus erectus	Green Buttonwood				Good									Remain								
LD-05	200	Swietenia mahagoni	Mahogany				Good									Remain								
LD-05	200A	Swietenia mahagoni	Mahogany				Good									Remain								
LD-05	200B	Tabebuia sp.	Tabebuia	38	45		Fair	Lopsided Canopy	Sprouting		Structure Pruning	Crown Cleaning	Consider Keeping (REMAIN)	10	FAIR-To be evaluated by a Certified Arb.	Remain								
LD-05	200C	Thespesia populnea	Portia				N/A								LARGE CLUMP / INVASIVE - No mitigation required			Remove						1
LD-05	200D	Thespesia populnea	Portia				N/A								LARGE CLUMP / INVASIVE - No mitigation required			Remove						1
LD-05	200E	Thespesia populnea	Portia				N/A								LARGE CLUMP / INVASIVE - No mitigation required			Remove						1
LD-05	200F	Callistemon citrinus	Bottlebrush	12			Fair	Co Dominant Leaders, Included Bark	Trunk Damage (Moderate)		Structure Pruning					Remain								
LD-05	200G	Conocarpus erectus sericeus	Silver Buttonwood	10			Fair	Poor Structure							BAD STRUCTURE		Remove	1						
LD-05	200H	Cardia sebestena	Orange Geiger	7			Fair	Poor Structure							BAD STRUCTURE		Remove	1						
LD-05	201	Cocos nucifera	Coconut Palm		25 GW		Good								GOOD	Remain								
LD-05	201A	Cocos nucifera	Coconut Palm		25 GW		Good								GOOD	Remain								
LD-05	201B	Washingtonia robusta	Washington Palm		3 GW		N/A								No mitigation required			Remove						1
LD-05	201C	Large shrubs					N/A								No mitigation required			Remove						1
LD-05	202	Cocos nucifera	Coconut Palm		25 GW		Good								GOOD - MINOR TRUNK DAMAGE	Remain								
LD-05	203	Cocos nucifera	Coconut Palm		10		Good								ACCEPTABLE	Remain								
LD-05	204	Cocos nucifera	Coconut Palm		28 GW		Good	Trunk Damage (Minor)							GOOD - MINOR TRUNK DAMAGE	Remain								
LD-05	205	Callaphyllum inophyllum	Beauty Leaf	13	26	25	Good								GOOD	Remain								
LD-05	206	Cocos nucifera	Coconut Palm		30 GW		Good								GOOD	Remain								
LD-05	206A	Thespesia populnea	Portia		30-40		N/A								LARGE CLUMP / INVASIVE - No mitigation required			Remove						1
LD-05	206B	Thespesia populnea	Portia		30-40		N/A								LARGE CLUMP / INVASIVE - No mitigation required			Remove						1
LD-05	207	Cocos nucifera	Coconut Palm		30 GW		Good								GOOD	Remain								
LD-05	208	Cocos nucifera	Coconut Palm		25 GW		Good								GOOD	Remain								
LD-05	209	Bursera simaruba	Gumbo Limbo	9	13	14	Poor	Reduced Canopy (Major)	Lopsided				Consider Removal Due to Condition	9	FAIR CONDITION - In the way of construction			Remove	1					
LD-05	209A	Thespesia populnea	Portia		30-35		N/A								LARGE CLUMP / INVASIVE - No mitigation required			Remove						1
LD-05	210	Bursera simaruba	Gumbo Limbo				Fair	Discolored Foliage			Fertilization					Remain								
LD-05	211	Thespesia populnea	Portia		30-35		N/A								LARGE CLUMP / INVASIVE - No mitigation required			Remove						1
LD-05	212	Bursera simaruba	Gumbo Limbo	4	7	3	Poor	Reduced Canopy (Major)							BAD STRUCTURE			Remove	1					
LD-05	213	Bursera simaruba	Gumbo Limbo	10	12	8	Good/Fair	Stubs			Crown Cleaning				FAIR CONDITION -In the way of construction		Relocate					1		
LD-05	214	Bursera simaruba	Gumbo Limbo	5	10	9	Poor	Defoliated (Moderate)	Reduced Canopy (Moderate)				Consider Removal Due to Condition	11	FAIR CONDITION -In the way of construction			Remove	1					

Higgs Beach Park at Atlantic Boulevard

November 28th, 2016 Tree Disposition Table (updated per E Sciences' field assessment on January 5th, 2017)

							E SCIENCES' NOTES								Note - columns updated per E Sciences' recommended change to disposition (edits in bold text)									
Sheet No.	Tree #	Botanical Name	Common Name	Caliper (in)	Height (ft)	Spread (ft)	CONDITION	Defect 1	Defect 2	Defect 3	Recommendation 1	Recommendation 2	Comments	Photo # (if applicable)	Condition	Disposition			Canopy Tree-Remove	Native Palms-Remove	Non-Native Palms-Remove-MITIGATE	Canopy-Transplant	Palms-Transplant	Inv/Unreg - Remove
LD-05	232	Cocos nucifera	Coconut Palm		20		Good/Fair	Discolored Foliage			Fertilization				ACCEPTABLE	Remain								
LD-05	233	Cocos nucifera	Coconut Palm		21		Good/Fair	Discolored Foliage			Fertilization				ACCEPTABLE	Remain								
LD-05	234	Cocos nucifera	Coconut Palm		25		Good/Fair	Discolored Foliage			Fertilization				ACCEPTABLE	Remain								
LD-05	235	Cocos nucifera	Coconut Palm		28		Good/Fair	Discolored Foliage			Fertilization				ACCEPTABLE	Remain								
LD-05	236	Cocos nucifera	Coconut Palm		30		Good/Fair	Discolored Foliage			Fertilization				ACCEPTABLE	Remain								
LD-05	236A	Cocos nucifera	Coconut Palm				Good/Fair	Discolored Foliage			Fertilization					Remain								
LD-05	237	Cocos nucifera	Coconut Palm		25		Good/Fair	Discolored Foliage			Fertilization				ACCEPTABLE	Remain								
LD-05	238	Cocos nucifera	Coconut Palm		17		Good/Fair	Discolored Foliage			Fertilization				DOUBLE TRUNK - BOTH ACCEPTABLE	Remain								
LD-05	238A	Cocos nucifera	Coconut Palm				Good/Fair	Discolored Foliage			Fertilization					Remain								
LD-05	239	Conocarpus erectus	Green Buttonwood	60	30	40	Poor	Low Multi-Trunk	Stubs		Crown Cleaning				POOR - STRUCTURAL ISSUES	Remain								
LD-05	240	Cocos nucifera	Coconut Palm		30		Good/Fair	Discolored Foliage			Fertilization				ACCEPTABLE	Remain								
LD-05	241	Cocos nucifera	Coconut Palm				Good/Fair	Discolored Foliage			Fertilization				SMALL	Remain								
LD-05	242	Cocos nucifera	Coconut Palm		26		Good/Fair	Discolored Foliage			Fertilization				ACCEPTABLE	Remain								
LD-05	243	Cocos nucifera	Coconut Palm		18		Good/Fair	Discolored Foliage			Fertilization				GOOD	Remain								
LD-05	244	Coccoloba uvifera	Sea Grape				Good/Fair	Low Multi-Trunk								Remain								
LD-05	245	Cocos nucifera	Coconut Palm		24		Good/Fair	Discolored Foliage			Fertilization				ACCEPTABLE	Remain								
LD-05	246	Cocos nucifera	Coconut Palm		24		Good/Fair	Discolored Foliage			Fertilization				GOOD	Remain								
LD-05	247	Thespesia populnea	Portia				N/A								INVASIVE - No mitigation required		Remove							1
LD-05	247A	Cocos nucifera	Coconut Palm				Good/Fair	Discolored Foliage			Fertilization					Remain								
LD-05	248	Cocos nucifera	Coconut Palm		13		Good								GOOD	Remain								
LD-05	249	Cocos nucifera	Coconut Palm		12 & 4		Good								DOUBLE TRUNK - BOTH ACCEPTABLE	Remain								
LD-05	250	Cocos nucifera	Coconut Palm		3		Fair	Discolored Foliage			Fertilization				ACCEPTABLE	Remain								
LD-05	251	Cocos nucifera	Coconut Palm		18		Good								GOOD	Remain								
LD-05	252	Conocarpus erectus	Green Buttonwood	28	40	50	Fair	Stubs			Crown Cleaning				ACCEPTABLE	Remain								
LD-05	253	Cocos nucifera	Coconut Palm		14		Good								GOOD	Remain								
LD-05	254	Cocos nucifera	Coconut Palm		18		Fair	Discolored Foliage			Fertilization				GOOD	Remain								
LD-05	255	Cocos nucifera	Coconut Palm		16		Fair	Discolored Foliage			Fertilization				GOOD	Remain								
LD-05	256	Cocos nucifera	Coconut Palm		21		Fair	Discolored Foliage	Utility Line Conflict		Fertilization	Clearance Pruning			GOOD - ADJACENT UTILITY POLE	Remain								
LD-05	257	Cocos nucifera	Coconut Palm		9		Fair	Discolored Foliage			Fertilization				GOOD	Remain								
LD-05	258	Cocos nucifera	Coconut Palm		14		Fair	Discolored Foliage			Fertilization				GOOD	Remain								
LD-05	259	Cocos nucifera	Coconut Palm				Good/Fair	Discolored Foliage			Fertilization				GOOD	Remain								
LD-05	260	Cocos nucifera	Coconut Palm				Good/Fair	Discolored Foliage			Fertilization				TRIPLE TRUNK - GOOD	Remain								
LD-05	261	Cocos nucifera	Coconut Palm				Good/Fair	Discolored Foliage			Fertilization				ACCEPTABLE	Remain								
LD-05	262	Cocos nucifera	Coconut Palm				Good/Fair	Discolored Foliage			Fertilization				ACCEPTABLE	Remain								
LD-05	263	Cocos nucifera	Coconut Palm				Good/Fair	Discolored Foliage			Fertilization					Remain								
LD-05	264	Cocos nucifera	Coconut Palm				Good/Fair	Discolored Foliage			Fertilization				ACCEPTABLE	Remain								
LD-05	265	Cocos nucifera	Coconut Palm				Good/Fair	Discolored Foliage			Fertilization				ACCEPTABLE	Remain								
LD-05	266	Cocos nucifera	Coconut Palm				Good/Fair	Discolored Foliage			Fertilization				ACCEPTABLE	Remain								
LD-05	267	Cocos nucifera	Coconut Palm				Good/Fair	Discolored Foliage			Fertilization				ACCEPTABLE	Remain								
LD-05	267A	Cocos nucifera	Coconut Palm				Good/Fair	Discolored Foliage			Fertilization					Remain								
LD-05	268	Cocos nucifera	Coconut Palm				Good/Fair	Discolored Foliage			Fertilization				ACCEPTABLE	Remain								
LD-05	269	Washingtonia robusta	Washington Palm	16	38	14	Good								In the way of construction		Remove				1			
LD-05	270	Conocarpus erectus	Green Buttonwood	50	45	45	Good/Fair	Stubs	Utility Line Conflict		Crown Cleaning	Clearance Pruning		13	GOOD	Remain								
LD-05	271	Conocarpus erectus	Green Buttonwood	70	45	55	Good						Good Condition - Retain if Possible	14	LARGE TREE - In the way of construction	Remain								
LD-05	272	Cocos nucifera	Coconut Palm		9		Good								GOOD	Remain								
LD-05	273	Cocos nucifera	Coconut Palm		18		Good								GOOD	Remain								
LD-05	274	Cocos nucifera	Coconut Palm		11		Good								ACCEPTABLE	Remain								
LD-05	275	Cocos nucifera	Coconut Palm		6		Good								GOOD	Remain								
LD-05	276	Cocos nucifera	Coconut Palm		7		Good								GOOD	Remain								
LD-05	277	Cocos nucifera	Coconut Palm		13		Good								GOOD	Remain								
LD-05	277A	Guaiaacum sanctum	Lignum vitae		5		Good								GOOD	Remain								
LD-05	277B	Guaiaacum sanctum	Lignum vitae		5		Good								GOOD	Remain								
LD-05	278	Cocos nucifera	Coconut Palm		22		Good								GOOD	Remain								
LD-05	279	Cocos nucifera	Coconut Palm		12		Good								GOOD	Remain								
LD-05	280	Cocos nucifera	Coconut Palm		13		Good								GOOD	Remain								
LD-05	281	Cocos nucifera	Coconut Palm		11 & 12		Good								DOUBLE TRUNK - BOTH GOOD	Remain								
LD-05	282	Cocos nucifera	Coconut Palm		14		Good								GOOD	Remain								
LD-05	283	Cocos nucifera	Coconut Palm		20		Good								GOOD	Remain								
LD-05	284	Cocos nucifera	Coconut Palm		15		Good	Utility Line Conflict			Clearance Pruning				GOOD - OVERHEAD UTILITY	Remain								
LD-05	285	Cocos nucifera	Coconut Palm		15		Good	Utility Line Conflict			Clearance Pruning				ACCEPTABLE - OVERHEAD UTILITY	Remain								
LD-05	28																							

Higgs Beach Park at Atlantic Boulevard

November 28th, 2016 Tree Disposition Table (updated per E Sciences' field assessment on January 5th, 2017)

E SCIENCES' NOTES															Note - columns updated per E Sciences' recommended change to disposition (edits in bold text)									
Sheet No.	Tree #	Botanical Name	Common Name	Caliper (in)	Height (ft)	Spread (ft)	CONDITION	Defect 1	Defect 2	Defect 3	Recommendation 1	Recommendation 2	Comments	Photo # (if applicable)	Condition	Disposition			Canopy Tree-Remove	Native Palms-Remove	Non-Native Palms-Remove-MITIGATE	Canopy-Transplant	Palms-Transplant	Inv/Unreg - Remove
LD-05	303	Cocos nucifera	Coconut Palm		12 to 40		Good								ACCEPTABLE	Remain								
LD-05	304	Cocos nucifera	Coconut Palm		12 to 40		Good								ACCEPTABLE	Remain								
LD-05	305	Bursera simaruba	Gumbo Limbo	16	18	14	Fair	Low Multi-Trunk							ACCEPTABLE - POOR STRUCTURE	Remain								
LD-05	306	Bursera simaruba	Gumbo Limbo				Fair	Low Multi-Trunk	Stubs	Reduced Canopy (Moderate)	Crown Cleaning					Remain								
LD-05	307	Washingtonia robusta	Washington Palm	16	42	10	Good/Fair	Reduced Canopy (Minor)							In the way of construction		Remove				1			
LD-05	308	Bursera simaruba	Gumbo Limbo				Fair	Discolored Foliage	Reduced Canopy (Moderate)		Fertilization					Remain								
LD-05	309	Cocos nucifera	Coconut Palm		30		Good								GOOD	Remain								
LD-05	310	Washingtonia robusta	Washington Palm	16	42	12	Good								In the way of construction		Remove				1			
LD-05	311	Adonidia merrilli	Christmas Palm		8 to 13		Good								FAIR	Remain								
LD-05	312	Adonidia merrilli	Christmas Palm		8 to 13		Good								FAIR	Remain								
LD-05	313	Adonidia merrilli	Christmas Palm		8 to 13		Good								FAIR	Remain								
LD-05	314	Adonidia merrilli	Christmas Palm		8 to 13		Good								FAIR	Remain								
LD-05	315	Adonidia merrilli	Christmas Palm		8 to 13		Good								FAIR	Remain								
LD-05	316	Adonidia merrilli	Christmas Palm		8 to 13		Good								FAIR	Remain								
LD-05	317	Adonidia merrilli	Christmas Palm		8 to 13		Good								FAIR	Remain								
LD-05	318	Adonidia merrilli	Christmas Palm		8 to 13		Good								FAIR	Remain								
LD-05	319	Adonidia merrilli	Christmas Palm		8 to 13		Good								FAIR	Remain								
LD-05	320	Adonidia merrilli	Christmas Palm		8 to 13		Good								FAIR	Remain								
LD-05	321	Cocos nucifera	Coconut Palm		13		Fair	Discolored Foliage			Fertilization				ACCEPTABLE	Remain								
LD-05	322	Bursera simaruba	Gumbo Limbo	17	18	23	Good	Utility Lines Above			Future Clearance Pruning				GOOD	Remain								
LD-05	323	Cocos nucifera	Coconut Palm		16		Fair	Discolored Foliage			Fertilization				GOOD	Remain								
LD-05	324	Cocos nucifera	Coconut Palm		8		Good								GOOD	Remain								
LD-05	325	Cocos nucifera	Coconut Palm		20		Good								GOOD	Remain								
LD-05	326	Cocos nucifera	Coconut Palm		17		Good								GOOD	Remain								
LD-05	327	Cocos nucifera	Coconut Palm		12		Good								GOOD	Remain								
LD-05	328	Cocos nucifera	Coconut Palm				Good									Remain								
LD-05	329	Cocos nucifera	Coconut Palm		9		Good								GOOD	Remain								
LD-05	330	Adonidia merrilli	Christmas Palm	2	7	4	Fair	Trunk Damage (Moderate)							POOR STRUCTURE AT BASE OF TRUNK	Remain								
LD-05	331	Cocos nucifera	Coconut Palm		13		Good								GOOD	Remain								
LD-05	332	Cocos nucifera	Coconut Palm		22		Fair	Discolored Foliage			Fertilization				GOOD	Remain								
LD-05	333	Cocos nucifera	Coconut Palm		11		Fair	Discolored Foliage			Fertilization				ACCEPTABLE	Remain								
LD-05	334	Cocos nucifera	Coconut Palm		7		Fair	Discolored Foliage			Fertilization				GOOD	Remain								
LD-05	335	Cocos nucifera	Coconut Palm		14		Fair	Discolored Foliage			Fertilization				GOOD	Remain								
LD-05	336	Cocos nucifera	Coconut Palm		13		Fair	Discolored Foliage			Fertilization				GOOD	Remain								
LD-05	337	Cocos nucifera	Coconut Palm		25		Fair	Discolored Foliage			Fertilization				GOOD	Remain								
LD-05	338	Conocarpus erectus sericeus	Silver Buttonwood	14	15	15	Fair	Lopsided Canopy			Structure Pruning				ACCEPTABLE	Remain								
LD-05	339	Conocarpus erectus sericeus	Silver Buttonwood	12	25	28	Fair	Low Multi-Trunk			Structure Pruning				ACCEPTABLE	Remain								
LD-05	340	Cocos nucifera	Coconut Palm		11		Fair	Discolored Foliage			Fertilization				GOOD	Remain								
LD-05	341	Cocos nucifera	Coconut Palm		12		Fair	Discolored Foliage			Fertilization				GOOD	Remain								
LD-05	342	Cocos nucifera	Coconut Palm		12		Fair	Discolored Foliage			Fertilization				GOOD	Remain								
LD-05	343	Cocos nucifera	Coconut Palm		5		Fair	Discolored Foliage			Fertilization				ACCEPTABLE	Remain								
LD-05	344	Cocos nucifera	Coconut Palm				Good									Remain								
LD-05	345	Cocos nucifera	Coconut Palm				Good/Fair	Discolored Foliage			Fertilization					Remain								
LD-05	346	Cocos nucifera	Coconut Palm				Good									Remain								
LD-05	347	Cocos nucifera	Coconut Palm				Good									Remain								
LD-05	348	Cocos nucifera	Coconut Palm				Good									Remain								
LD-05	349	Cocos nucifera	Coconut Palm				Good									Remain								
LD-05	350	Cocos nucifera	Coconut Palm				Good									Remain								
LD-05	351	Cocos nucifera	Coconut Palm				Good									Remain								
LD-05	352	Cocos nucifera	Coconut Palm				Good									Remain								
LD-05	353	Cocos nucifera	Coconut Palm				Good									Remain								
LD-05	354	Cocos nucifera	Coconut Palm				Good									Remain								
LD-05	355	Cocos nucifera	Coconut Palm				Good									Remain								
LD-05	356	Cocos nucifera	Coconut Palm				Good									Remain								
LD-05	357	Cocos nucifera	Coconut Palm				Good									Remain								
LD-05	358	Cocos nucifera	Coconut Palm				Good									Remain								
LD-05	359	Cocos nucifera	Coconut Palm				Good	Utility Line Conflict			Clearance Pruning					Remain								
LD-05	360	Cocos nucifera	Coconut Palm				Good									Remain								
LD-06	361	Cocos nucifera	Coconut Palm				Good									Remain								
LD-06	362	Cocos nucifera	Coconut Palm				Good									Remain								
LD-06	363	Cocos nucifera	Coconut Palm				Good									Remain								
LD-06	364	Cocos nucifera	Coconut Palm				Good									Remain								
LD-06	364A	Tabebuia caraiba	Yellow Tabebuia				N/A						NOT ON MAP			Remain								
LD-06	365	Cocos nucifera	Coconut Palm				Good									Remain								
LD-06	366	Cocos nucifera	Coconut Palm				Good									Remain								
LD-06	367	Cocos nucifera	Coconut Palm				Good																	

Higgs Beach Park at Atlantic Boulevard

November 28th, 2016 Tree Disposition Table (updated per E Sciences' field assessment on January 5th, 2017)

							E SCIENCES' NOTES								Note - columns updated per E Sciences' recommended change to disposition (edits in bold text)									
Sheet No.	Tree #	Botanical Name	Common Name	Caliper (in)	Height (ft)	Spread (ft)	CONDITION	Defect 1	Defect 2	Defect 3	Recommendation 1	Recommendation 2	Comments	Photo # (if applicable)	Condition	Disposition			Canopy Tree-Remove	Native Palms-Remove	Non-Native Palms-Remove-MITIGATE	Canopy-Transplant	Palms-Transplant	Inv/Unreg - Remove
LD-06	3788	Conocarpus erectus	Green Buttonwood				Good						NOT ON MAP - SEE MAP MARK UP	20		Remain								
LD-06	379	Casuarina equisetifolia	Australian Pine				N/A								INVASIVE - No mitigation required			Remove						1
LD-06	380	Casuarina equisetifolia	Australian Pine				N/A								INVASIVE - No mitigation required			Remove						1
LD-06	381	Cocos nucifera	Coconut Palm				Good									Remain								
LD-06	382	Thrinax radiata	Florida Thatch Palm				Good								Quadruple trunk - GOOD	Remain								
LD-06	383	Thrinax radiata	Florida Thatch Palm				Good						CORRECTED COMMON NAME		GOOD	Remain								
LD-06	384	Thrinax radiata	Florida Thatch Palm				N/A						NOT PRESENT		GOOD	Remain								
LD-06	385	Thrinax radiata	Florida Thatch Palm				Good						CORRECTED COMMON NAME		GOOD	Remain								
LD-06	386	Thrinax radiata	Florida Thatch Palm				Good						CORRECTED COMMON NAME		GOOD	Remain								
LD-06	387	Leucothrinax morrisii	Key Thatch Palm				Good								GOOD	Remain								
LD-06	388	Not used					N/A									Remain								
LD-06	389	Not used					N/A									Remain								
LD-06	390	Not used					N/A									Remain								
LD-06	391	Not used					N/A									Remain								
LD-06	392	Washingtonia robusta	Washington Palm		35		Good								In the way of construction			Remove			1			
LD-06	393	Washingtonia robusta	Washington Palm		15		Good								In the way of construction			Remove			1			
LD-06	394	Casuarina equisetifolia	Australian Pine		65		N/A								INVASIVE - In the way of construction			Remove						1
LD-06	395	Cocos nucifera	Coconut Palm		15 GW		Fair	Discolored Foliage			Fertilization				FAIR CONDITION -In the way of construction		Relocate						1	
LD-06	396	Conocarpus erectus	Green Buttonwood	42	55	50	Fair	Lopsided Canopy							LARGE TREE - In the way of construction		Remove	1						
LD-06	397	Conocarpus erectus	Green Buttonwood	24	30	32	Good								LARGE TREE - In the way of construction		Remove	1						
LD-06	398	Cocos nucifera	Coconut Palm		18 GW		Good								FAIR CONDITION -In the way of construction		Relocate						1	
LD-06	399	Cocos nucifera	Coconut Palm		15 GW		Good								FAIR CONDITION -In the way of construction		Relocate						1	
LD-06	400	Conocarpus erectus	Green Buttonwood	25	30	40	Good						Keep if Possible (Good Condition)	17	LARGE TREE - In the way of construction	Remain								
LD-06	401	Cocos nucifera	Coconut Palm		12 GW		Fair	Discolored Foliage			Fertilization				FAIR CONDITION -In the way of construction		Relocate						1	
LD-06	402	Cocos nucifera	Coconut Palm		18 GW		Fair	Discolored Foliage			Fertilization				FAIR CONDITION -In the way of construction		Relocate						1	
LD-06	403	Conocarpus erectus	Green Buttonwood	36	37	50	Good						Keep if Possible (Good Condition)	18	LARGE TREE - In the way of construction	Remain								
LD-06	404	Thespesia populnea	Portia		35		N/A								LARGE CLUMP / INVASIVE - No mitigation required			Remove						1
LD-06	405	Cocos nucifera	Coconut Palm		16 - 18		Good								GOOD	Remain								
LD-06	406	Cocos nucifera	Coconut Palm		16 - 18		Good								GOOD	Remain								
LD-06	407	Bursera simaruba	Gumbo Limbo		25		Good/Fair	Trunk Damage (Minor)	Cavities							Remain								
LD-06	408	Cocos nucifera	Coconut Palm		16 - 18		Good								GOOD	Remain								
LD-06	409	Swietenia mahagoni	Mahogany	13	24	28	Good/Fair	Lopsided Canopy							LARGE TREE - In the way of construction		Remove	1						
LD-06	410	Cocos nucifera	Coconut Palm		12 GW		Good							16	FAIR CONDITION -In the way of construction		Relocate						1	
LD-06	411	Cocos nucifera	Coconut Palm		16 - 18		Good						Switched to "Relocate" per map		GOOD	Relocate							1	
LD-06	412	Cocos nucifera	Coconut Palm		16 - 18 GW		Good							15	FAIR CONDITION -In the way of construction	Relocate							1	
LD-06	413	Swietenia mahagoni	Mahogany	16	35	50	Good	Stubs	Dead Wood		Crown Cleaning					Remain								
LD-06	414	Not used					N/A																	
LD-06	415	Not used					N/A																	
LD-06	416	Not used					N/A																	
LD-06	417	Not used					N/A																	
LD-06	418	Not used					N/A																	
LD-06	419	Not used					N/A																	
LD-06	420	Washingtonia robusta	Washington Palm	14	20 GW	6	Fair	Discolored Foliage							In the way of construction			Remove			1			
LD-06	420A	Bursera simaruba	Gumbo Limbo	14	20	24	Fair	Growing Under Wall							In the way of construction - Wall/Root issues			Remove	1					
LD-06	420B	Swietenia mahagoni	Mahogany	18	38	33	Good/Fair	Lopsided Canopy			Structure Pruning		Good Candidate to "Remain"		REMAINS IF LAYOUT IS REVISED-TWO PARKING SPACES	Remain								
LD-06	420C	Swietenia mahagoni	Mahogany	9	20	16	Poor	Trunk Damage (Major)	Decay						STRUCTURAL ISSUES - In the way of construction			Remove	1					
LD-06	420D	Washingtonia robusta	Washington Palm				Good								In the way of construction			Remove			1			
LD-06	421	Cocos nucifera	Coconut Palm		22 GW		Good								FAIR CONDITION	Remain								
LD-06	421A	Bursera simaruba	Gumbo Limbo	2	10	10	Fair	Lopsided Canopy			Structure Pruning				FAIR CONDITION	Remain								
LD-06	421B	Cocos nucifera	Coconut Palm		25 GW		Good								FAIR CONDITION	Remain								
LD-06	421C	Cocos nucifera	Coconut Palm		18 GW		Good								FAIR CONDITION	Remain								
LD-06	421D	Cocos nucifera	Coconut Palm		20 GW		Good								FAIR CONDITION	Remain								
LD-06	421E	Bursera simaruba	Gumbo Limbo	1	7	7	Fair	Lopsided Canopy			Structure Pruning				FAIR CONDITION	Remain								
LD-06	422	Cocos nucifera	Coconut Palm		20 GW		Good								FAIR CONDITION -In the way of construction	Relocate							1	
LD-06	423	Cocos nucifera	Coconut Palm		20 GW		Good								FAIR CONDITION -In the way of construction	Relocate							1	
LD-06	424	Cocos nucifera	Coconut Palm		20 GW		Good								FAIR CONDITION -In the way of construction	Relocate							1	
LD-06	425	Cocos nucifera	Coconut Palm		22 GW		Good								FAIR CONDITION -In the way of construction	Relocate							1	
LD-06	426	Cocos nucifera	Coconut Palm		12 GW		Good								FAIR CONDITION -In the way of construction	Relocate							1	
LD-06	427	Cocos nucifera	Coconut Palm		20 GW		Good								FAIR CONDITION -In the way of construction	Relocate							1	
LD-06	428	Cocos nucifera	Coconut Palm		20 GW		Good								FAIR CONDITION -In the way of construction	Relocate							1	
LD-06	429	Cocos nucifera	Coconut Palm		18 GW		Good																	

Higgs Beach Park at Atlantic Boulevard

November 28th, 2016 Tree Disposition Table (updated per E Sciences' field assessment on January 5th, 2017)

E SCIENCES' NOTES															Note - columns updated per E Sciences' recommended change to disposition (edits in bold text)									
Sheet No.	Tree #	Botanical Name	Common Name	Caliper (in)	Height (ft)	Spread (ft)	CONDITION	Defect 1	Defect 2	Defect 3	Recommendation 1	Recommendation 2	Comments	Photo # (if applicable)	Condition	Disposition			Canopy Tree-Remove	Native Palms-Remove	Non-Native Palms-Remove-MITIGATE	Canopy-Transplant	Palms-Transplant	Inv/Unreg - Remove
LD-06	447	Cocos nucifera	Coconut Palm		12 GW		Good								FAIR CONDITION -In the way of construction		Relocate						1	
LD-06	448	Cocos nucifera	Coconut Palm		10 GW		Good								FAIR CONDITION -In the way of construction		Relocate						1	
LD-06	449	Cocos nucifera	Coconut Palm		20 GW		Good								FAIR CONDITION -In the way of construction		Relocate						1	
LD-06	450	Not used					N/A																	
LD-06	451	Not used					N/A																	
LD-06	452	Not used					N/A																	
LD-06	453	Not used					N/A																	
LD-06	454	Not used					N/A																	
LD-06	455	Cocos nucifera	Coconut Palm				Good									Remain								
LD-06	456	Cocos nucifera	Coconut Palm				Good									Remain								
LD-06	457	Cocos nucifera	Coconut Palm				Good									Remain								
LD-06	458	Cocos nucifera	Coconut Palm				Good									Remain								
LD-06	459	Cocos nucifera	Coconut Palm				Good	Utility Line Conflict			Clearance Pruning					Remain								
LD-06	460	Terminalia catappa	Tropical Almond	4	12		Good/Fair	Co-Dominant Leaders, Included Bark							No mitigation required		Remove							1
LD-06	461	Conocarpus erectus sericeus	Silver Buttonwood				Good									Remain								
LD-06	462	Washingtonia robusta	Washington Palm		30 GW		Good/Fair								In the way of construction		Remove				1			
LD-06	463	Washingtonia robusta	Washington Palm		40 GW		Good/Fair								In the way of construction		Remove				1			
LD-06	464	Washingtonia robusta	Washington Palm		65 GW		Good/Fair								In the way of construction		Remove				1			
LD-06	465	Bursera simaruba	Gumbo Limbo				Fair	Lopsided Canopy			Structure Pruning					Remain								
LD-06	466	Coccoloba uvifera	Sea Grape				Good									Remain								
LD-06	467	Bursera simaruba	Gumbo Limbo	12	13	14	Good/Fair	Co-Dominant Leaders			Structure Pruning					Remain								
LD-06	468	Bursera simaruba	Gumbo Limbo	5	7	8	Good/Fair	Co-Dominant Leaders, Included Bark			Structure Pruning					Remain								
LD-06	469	Bursera simaruba	Gumbo Limbo	6	10	7	Good									Remain								
LD-06	470	Cocos nucifera	Coconut Palm				Fair	Discolored Foliage			Fertilization					Remain								
LD-06	471	Washingtonia robusta	Washington Palm		30, 27 GW		Good								DOUBLE TRUNK / In the way of construction		Remove				1			
LD-06	471A	Washingtonia robusta	Washington Palm		28, 2 GW		Good								DOUBLE TRUNK / In the way of construction		Remove				1			
LD-06	471B	Cocos nucifera	Coconut Palm				Good	Utility Line Conflict			Clearance Pruning					Remain								
LD-06	471C	Cocos nucifera	Coconut Palm				Good	Utility Line Conflict			Clearance Pruning					Remain								
LD-06		Cocos nucifera	Coconut Palm				N/A						NOT ON MAP			Remain								
LD-06	471D	Cocos nucifera	Coconut Palm				Fair	Utility Line Conflict	Discolored Foliage		Clearance Pruning	Fertilization				Remain								
LD-06	472	Swietenia mahagoni	Mahogany	10	22	14	Fair	Partially Uprooted			Bracing/Support				POOR - ROOT STRUCTURAL ISSUES	Remain								
LD-06	473	Swietenia mahagoni	Mahogany	13	46	38	Fair	Lopsided Canopy			Structure Pruning		Consider Keeping (REMAIN)	22	POOR	Remain								
LD-06	474	Cocos nucifera	Coconut Palm		15 to 25		Fair	Discolored Foliage			Fertilization					Remain								
LD-06	475	Cocos nucifera	Coconut Palm		15 to 25		Fair	Discolored Foliage			Fertilization					Remain								
LD-06	476	Cocos nucifera	Coconut Palm		15 to 25		Fair	Discolored Foliage			Fertilization					Remain								
LD-06	477	Cocos nucifera	Coconut Palm		15 to 25		Fair	Discolored Foliage			Fertilization					Remain								
LD-06	478	Cocos nucifera	Coconut Palm		15 to 25		Fair	Discolored Foliage			Fertilization					Remain								
LD-06	479	Cocos nucifera	Coconut Palm		15 to 25		Fair	Discolored Foliage			Fertilization					Remain								
LD-06	480	Cocos nucifera	Coconut Palm		15 to 25		Fair	Discolored Foliage			Fertilization					Remain								
LD-06	481	Cocos nucifera	Coconut Palm		15 to 25		Fair	Discolored Foliage			Fertilization					Remain								
LD-06	482	Cocos nucifera	Coconut Palm		15 to 25		Fair	Discolored Foliage			Fertilization					Remain								
LD-06	483	Cocos nucifera	Coconut Palm		15 to 25		Fair	Discolored Foliage			Fertilization					Remain								
LD-06	484	Cocos nucifera	Coconut Palm		15 to 25		Fair	Discolored Foliage			Fertilization					Remain								
LD-06	485	Cocos nucifera	Coconut Palm		15 to 25		Fair	Discolored Foliage			Fertilization					Remain								
LD-06	486	Swietenia mahagoni	Mahogany	10	26	13	Fair	Co-Dominant Leaders							MITIGATION REQUIRED - In the way of construction		Remove	1						
LD-06	486A	Washingtonia robusta	Washington Palm		30 GW		Good								MITIGATION REQUIRED - In the way of construction		Remove				1			
LD-06	487	Swietenia mahagoni	Mahogany	14	30	24	Fair	Co-Dominant Leaders, Included Bark							MITIGATION REQUIRED - In the way of construction		Remove	1						
LD-06	488	Swietenia mahagoni	Mahogany	14	38	30	Fair	Co-Dominant Leaders	Lopsided Canopy						MITIGATION REQUIRED - In the way of construction		Remove	1						
LD-06	489	Cocos nucifera	Coconut Palm		18		Fair	Discolored Foliage			Fertilization					Remain								
LD-06	489A	Coccoloba uvifera	Seagrape				Fair	Low Multi-Trunk	Stubs		Crown Cleaning				Grouping / Shrubs	Remain								
LD-06	490	Not used					N/A									Remain								
LD-06	491	Bursera simaruba	Gumbo Limbo	8	20	13	Fair	Poor Structure	Lopsided Canopy						STRUCTURAL ISSUES - Growing under tree		Remove	1						
LD-06	492	Cocos nucifera	Coconut Palm		8		Good								FAIR CONDITION -In the way of construction		Relocate						1	
LD-06	493	Conocarpus erectus	Green Buttonwood	26	40	60	Good								GOOD	Remain								
LD-06	494	Cocos nucifera	Coconut Palm		12		Good								GOOD	Remain								
LD-06	495	Conocarpus erectus	Green Buttonwood	26	30	45	Good								GOOD	Remain								
LD-06	496	Cocos nucifera	Coconut Palm		8		Good								GOOD	Remain								
LD-06	497	Conocarpus erectus	Green Buttonwood	18	24	35	Good								GOOD	Remain								
LD-06	498	Conocarpus erectus	Green Buttonwood	30	40	50	Good								GOOD	Remain								
LD-06	499	Conocarpus erectus	Green Buttonwood	14	28	28	Good/Fair	Co-Dominant Leaders			Structure Pruning				STRUCTURAL ISSUES	Remain								
LD-06	500	Cocos nucifera	Coconut Palm		8		Good								GOOD	Remain								
LD-06	501	Cocos nucifera	Coconut Palm																					

November 28th, 2016 Tree Disposition Table (updated per E Sciences' field assessment on January 5th, 2017)

Page 7 of 7

ATTACHMENT 2

Photo Pages



Photo 1 – Tree No. 116.



Photo 2 – Tree No. 112B.



Photo 3 – Tree No. 129.



Photo 4 – Tree No. 130.



Photo 5 – Trees No. 160 and 161.



Photo 6 – Trees No. 150 to 156 (overview).



Photo 7 – Tree No. 180.



Photo 8 – Tree No. 187.



Photo 9 – Tree No. 209.



Photo 10 – Tree No. 200B.



Photo 11 – Tree No. 214.



Photo 12 – Tree No. 229.



Photo 13 – Tree No. 270.



Photo 14 – Tree No. 271.



Photo 15 – Tree No. 412



Photo 16 – Tree No. 410.



Photo 17 – Tree No. 400.



Photo 18 – Tree No. 403.



Photo 19 – Tree No. 378A



Photo 20 – Tree No. 378B.



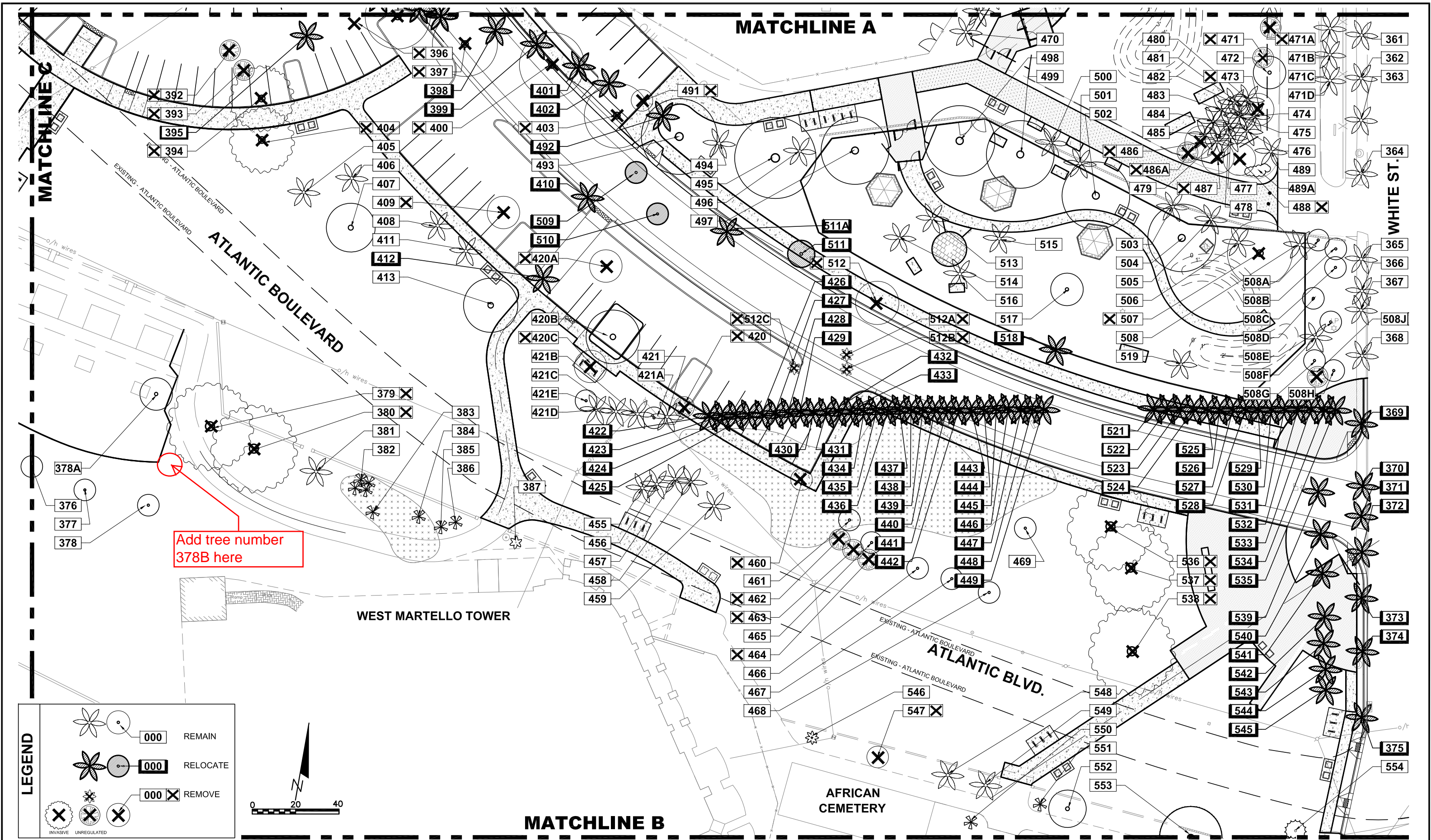
Photo 21 – Tree No. 507.



Photo 22 – Tree No. 473.

ATTACHMENT 3

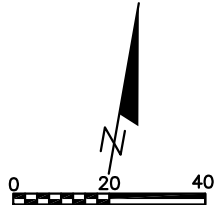
Tree Disposition Plan Mark Up



Add tree number
378B here

LEGEND

	000	REMAIN
	000	RELOCATE
	000 X	REMOVE
		INVASIVE
		UNREGULATED



REVISIONS		
DATE	BY	DESCRIPTION

LAOR

Leticia Fernandez-Beraud, RLA
LA6666720

FERNANDEZ-BERAUD, INC.
Landscape Architecture and Planning



MONROE COUNTY
PUBLIC WORKS/ENGINEERING DIVISION

1100 Simonton Street, Suite 2-231
Key West, Florida 33040
(305) 292-4560 FAX (305) 292-4558

MONROE COUNTY
PUBLIC WORKS/ENGINEERING DIVISION

PROJECT NAME

RELOCATION OF ATLANTIC BOULEVARD

TREE DISPOSITION PLAN

11.28.2016

SHEET NO.

LD-06

NOT FOR CONSTRUCTION - 90% SUBMITTAL PLANS