

STAFF REPORT

DATE: June 10, 2019

RE: 3824 & 3840 N. Roosevelt Blvd-Conceptual Landscape Plan Approval, Major Development Plan

FROM: Karen DeMaria, City of Key West Urban Forestry Manager

On June 10, 2019, updated plans were received that incorporate the requested site map adjustments. The maps appear to be accurate, but the actual tree list needs a couple of minor adjustments (see attached plans).

The proposed landscape plan does not involve the removal of any regulated trees species and all the proposed transplants have been accounted for in the new design. It does appear that the plan currently submitted on June 10, 2019 will incorporate the City code requirement of 70% native vegetation.

Recommend approval of the Conceptual Landscape Plan dated June 10, 2019 so that the plan can get reviewed by the Planning Board. Details as to the counts of the understory plants will be needed for Planning Board and Final Landscape Plan approval by the Tree Commission to verify City code requirement of 70% native species.

ALL TREES NOT LOCATED WITHIN THE LIMITS OF CONSTRUCTION AND OUTSIDE OF OTHER AREAS SHALL BE PRESERVED. THE CONTRACTOR IS RESPONSIBLE FOR PROTECTING ALL TREES TO BE PRESERVED.

IF ANY TREES ARE LOCATED WITHIN THE LIMITS OF CONSTRUCTION, THE CONTRACTOR SHALL:

- 1) ALL TREES BEING TO REMAIN AFTER THE LIMITS OF CONSTRUCTION ON THE PLANS SHALL BE PROTECTED BY ERECTING CONSTRUCTION FENCE AND "TREE PROTECTION" TREE LOCUS AND "TREE PROTECTION" FENCE DETAILS, ON THIS SHEET.
- 2) TREE PROTECTION FENCES SHALL BE INSTALLED PRIOR TO THE COMMENCEMENT OF ANY SITE PREPARATION, EXCAVATION OR GRADING WORK. THE CONTRACTOR SHALL MAINTAIN THE AROUND ALL PLACES OF THE CONSTRUCTION OF PROJECT.
- 3) TREE PROTECTION CONTROL BARBERS SHALL BE INSTALLED AS SHOWN IN A "SHAWR BARBER" DOES NOT RESULT IN SOIL BUILD-UP WITHIN TREE CROWNED.

FENCES SHALL BE LOCATED SURROUND THE TREE OR CLUSTER OF TREES, LOCATED AT THE OUTERSIDE OF THE TREE CROWNED. THE MINIMUM DISTANCE TO PROTECT EACH TREE: IF HIGHER OR GREATER, THE CONTRACTOR SHALL MAINTAIN THE "CONSTRUCTION" PROJECT IN ORDER TO PREVENT THE FOLDING.

- AA. ALL TREES LOCATED WITHIN THE LIMITS OF CONSTRUCTION SHALL BE PROTECTED BY ERECTING CONSTRUCTION FENCE AND "TREE PROTECTION" FENCE DETAILS, ON THIS SHEET.
- AB. ONE DISTANCE BEING TO GRASSY GROUNDS OR TRENDING NOT KEPT AND ALTERNATIVE TO THE FOLLOWING:
- AC. MINOR TO EXPOSED ROOTS, TRUNK, OR FIBER BY TECHNICAL EQUIPMENT.
- AD. OTHER ACTIVITY EXCEPTED TO TREES BEING AS CAPITAL STRUCTURE, CONCRETE TRUCK, CLIMBING AND PILES.

EXCEPTIONS TO INSTALLING TREE FENCES AT THE TREE DIPS OR IN OTHER AREAS GREATER:

- 1A. WHERE THERE IS TO BE AN APPROVED GRASSY, IMPEDABLE PAVING, BLINDING, OR FOLDING.
- 2A. WHERE PERMISSIBLE PAVING IS TO BE INSTALLED, EXCEPT THE FENCE AT THE OUTER LIMITS OF THE PERMISSIBLE PAVING AREA.
- 3A. WHERE TREES ARE LOCATED CLOSE TO PERSONNEL, EXCEPT THE FENCE NO GREATER THAN 4 FEET TO THE BUILDING.
- 4A. WHERE TREES ARE NEARBY OF THE CONTRACTORS DO TO TRAIL OR ON OTHER SPECIAL REQUESTS, EXCEPT THE LANDSCAPE ARCHITECT TO GRASSY ALTERNATIVES.

WHERE ANY OF THE RESULT IN A FENCE THAT IS CLOSER THAN 4 FEET TO A TREE, TRUNK, THE TRUNK SHALL BE PROTECTED BY STREAMLINED PAVING TO A LEGS OF 4 FEET (OR TO THE TRUNK) CLOSER BEING CLOSER TO PERSONNEL, EXCEPT THE FENCE NO GREATER THAN 4 FEET TO THE BUILDING.

WHERE ANY OF THE ABOVE EXCEPTIONS RESULT IN AREAS OF UNPROTECTED ROOTS BEING EXPOSED OR THE CROWN OF ONE, HIGHER OR GREATER, THESE AREAS SHOULD BE COVERED WITH A INCHES OF MULCH TO PROTECT THEM FROM DAMAGE.

ALL GRADING WITHIN ONE AREAS SHALL BE DONE BY HAND OR WITH SMALL EQUIPMENT TO MINIMIZE ROOT DAMAGE PRIOR TO GRADING. LOCATE PROTECTIVE FENCING TO 2 FEET BEHIND THE GRASSY AREA.

ALL ROOTS EXPOSED BY CONSTRUCTION ACTIVITY SHALL BE PRUNED FLOWING WITH THE SOIL AND REMOVED WITHIN 48 HOURS OF EXPOSURE. THE CONTRACTOR SHALL:

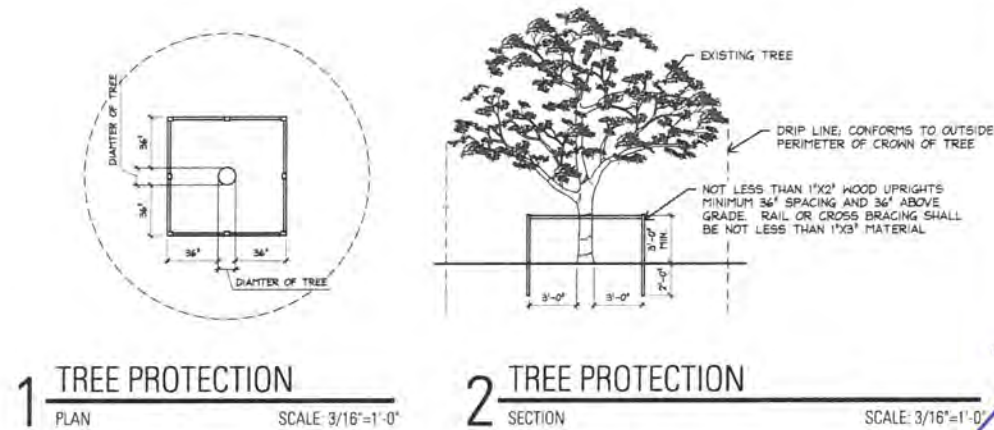
- 1) PRIOR TO EXCAVATION OR GRASS CUTTING WITHIN TREE CROWNED, A CLEAN CUT SHALL BE MADE AT THE TRUNK OF THE TREE TO BE REMOVED.
- 2) THE CONTRACTOR SHALL MAINTAIN THE "CONSTRUCTION" PROJECT IN ORDER TO PREVENT THE FOLDING.
- 3) TREES NOT HEAVILY IMPACTED BY CONSTRUCTION ACTIVITY SHALL BE MAINTAINED DURING ONE YEAR DURING PERIOD OF ACT "DEATH". TREE CROWNED ARE TO BE SPRAYED WITH WATER PERIODICALLY TO REDUCE THE EFFECT OF DRYING.
- 4) ANY TRENDING REQUIRED FOR THE INSTALLATION OF LANDSCAPE ARCHITECT SHALL BE PLACED AS FLOWING WITHIN 4 FEET TO THE TRUNK.

NO LANDSCAPE TOPPING, PRUNING GRASS, OR OTHER ACTIVITY SHALL BE PERMITTED WITHIN THE CROWNED OR TRUNK, HIGHER OR GREATER, NO TRUNK IS PERMITTED ON ROOT PLAYS OF ANY TREE.

PLANS TO PROVIDE CLEARANCE FOR STRUCTURES, VEHICULAR TRAFFIC AND CONSTRUCTION EQUIPMENT SHALL BE MAINTAINED BY THE CONTRACTOR. THE CONTRACTOR SHALL MAINTAIN THE "CONSTRUCTION" PROJECT IN ORDER TO PREVENT THE FOLDING.

STAKES AND ALL EQUIPMENT IN LITERATURE PROVIDED BY THE INTERNATIONAL SOCIETY OF LANDSCAPE ARCHITECTS SHALL BE LOCATED TO BE REMOVED. ADDITIONAL TREE PROTECTION BEFORE OR DURING CONSTRUCTION.

THE CONTRACTOR SHALL BE RESPONSIBLE FOR THE REMOVAL OF ALL EQUIPMENT AND MATERIALS FROM THE SITE PRIOR TO CONSTRUCTION. ALL WORK HEREUPON DONE ACCORDING MUST BE PLACED TO A HEIGHT OF 4 FEET ABOVE THE GROUND.

[illegible]

Taxa	Common Name	Latin Name
1	Coconut Palm	<i>Cocos nucifera</i>
2	Coconut Palm	<i>Cocos nucifera</i>
3	Coconut Palm	<i>Cocos nucifera</i>
4	Coconut Palm	<i>Cocos nucifera</i>
5	Coconut Palm	<i>Cocos nucifera</i>
6	Coconut Palm	<i>Cocos nucifera</i>
7	Coconut Palm	<i>Cocos nucifera</i>
8	Coconut Palm	<i>Cocos nucifera</i>
9	Coconut Palm	<i>Cocos nucifera</i>
10	Coconut Palm	<i>Cocos nucifera</i>
11	Coconut Palm	<i>Cocos nucifera</i>
12	Coconut Palm	<i>Cocos nucifera</i>
13	Areca Palm	<i>Dyopsis lutescens</i>
14	Areca Palm	<i>Dyopsis lutescens</i>
15	Coccoloba Palm	<i>Coccoloba palmifolia</i>
15a	Japanese Privet	<i>Ligustrum japonicum</i>
16	Coconut Palm	<i>Cocos nucifera</i>
16a	Japanese Privet	<i>Ligustrum japonicum</i>
17	Coconut Palm	<i>Cocos nucifera</i>
17a	MacArthur Palm	<i>Psychosperma macarthuri</i>
18	Coconut Palm	<i>Cocos nucifera</i>
19	Areca Palm	<i>Dyopsis lutescens</i>
20	Areca Palm	<i>Dyopsis lutescens</i>
21	Areca Palm	<i>Dyopsis lutescens</i>
22	Areca Palm	<i>Dyopsis lutescens</i>
23	Strangler Fig	<i>Ficus aurea</i>
24	Areca Palm	<i>Dyopsis lutescens</i>
25	Dahoon Holly	<i>Ilex cassine</i>
26	Areca Palm	<i>Dyopsis lutescens</i>
27	Areca Palm	<i>Dyopsis lutescens</i>
28	n/a	n/a
29	Dahoon Holly	<i>Ilex Cassine</i>
30	Areca Palm	<i>Dyopsis lutescens</i>
31	Dahoon Holly	<i>Ilex Cassine</i>
32	Areca Palm	<i>Dyopsis lutescens</i>
33	Dahoon Holly	<i>Ilex Cassine</i>
34	Areca Palm	<i>Dyopsis lutescens</i>
35	Dahoon Holly	<i>Ilex Cassine</i>
36	Areca Palm	<i>Dyopsis lutescens</i>
36a	Dahoon Holly	<i>Ilex Cassine</i>
36b	Areca Palm	<i>Dyopsis lutescens</i>
37	Christmas Palm	<i>Adonia merriallii</i>
38	Christmas Palm	<i>Adonia merriallii</i>
39	n/a	n/a
40	Gumbo Limbo Tree	<i>Bursera simaruba</i>
41	Umbrella Tree	<i>Schefflera actinophylla</i>
42	Umbrella Tree	<i>Schefflera actinophylla</i>
43	Gumbo Limbo Tree	<i>Bursera simaruba</i>
44	Umbrella Tree	<i>Schefflera actinophylla</i>
45	Areca Palm	<i>Dyopsis lutescens</i>
46	Areca Palm	<i>Dyopsis lutescens</i>
47	Dahoon Holly	<i>Ilex Cassine</i>

→ 53A B.C
Aurea Solitaria Aurea > on the drawing but not on list

Tag	Common Name	Latin Name
48	Areca Palm	<i>Dyopsis lutescens</i>
49	Dahoon Holly	<i>Ilex Cassine</i>
50	Areca Palm	<i>Dyopsis lutescens</i>
51	Solitaire Palm	<i>Psychosperma elegans</i>
52	Areca Palm	<i>Dyopsis lutescens</i>
53	Solitaire Palm	<i>Psychosperma elegans</i>
54	Gumbo Limbo Tree	<i>Bursaria sinuata</i>
55	Areca Palm	<i>Dyopsis lutescens</i>
56	Sabal Palm	<i>Sabal palmetto</i>
57	Areca Palm	<i>Dyopsis lutescens</i>
58	Sabal Palm	<i>Sabal palmetto</i>
59	Areca Palm	<i>Dyopsis lutescens</i>
60	Sabal Palm	<i>Sabal palmetto</i>
61	Areca Palm	<i>Dyopsis lutescens</i>
62	Areca Palm	<i>Dyopsis lutescens</i>
63	Gumbo Limbo Tree	<i>Bursaria sinuata</i>
64	Areca Palm	<i>Dyopsis lutescens</i>
65	Gumbo Limbo Tree	<i>Bursaria sinuata</i>
66	Areca Palm	<i>Dyopsis lutescens</i>
67	Areca Palm	<i>Dyopsis lutescens</i>
68	Areca Palm	<i>Dyopsis lutescens</i>
69	Areca Palm	<i>Dyopsis lutescens</i>
70	Areca Palm	<i>Dyopsis lutescens</i>
71	Areca Palm	<i>Dyopsis lutescens</i>
72	Areca Palm	<i>Dyopsis lutescens</i>
73	Areca Palm	<i>Dyopsis lutescens</i>
74	Verawood	<i>Bursera arborea</i>
75	Verawood	<i>Bursera arborea</i>
76	Flourbait Palm	<i>Acrocalymma wrightii</i>
77	N/A	
78	Areca Palm	<i>Dyopsis lutescens</i>
79	Coconut Palm	<i>Cocos nucifera</i>
80	Coconut Palm	<i>Cocos nucifera</i>
81	Coconut Palm	<i>Cocos nucifera</i>
82	Avocado Tree	<i>Persea americana</i>
83	Avocado Tree	<i>Persea americana</i>
84	Avocado Tree	<i>Persea americana</i>
85	Avocado Tree	<i>Persea americana</i>
86	Simpson Stopper	<i>Myrcianthes fragrans</i>
87	Simpson Stopper	<i>Myrcianthes fragrans</i>
88	Simpson Stopper	<i>Myrcianthes fragrans</i>
89	Simpson Stopper	<i>Myrcianthes fragrans</i>
90	Simpson Stopper	<i>Myrcianthes fragrans</i>
91	Simpson Stopper	<i>Myrcianthes fragrans</i>
92	Simpson Stopper	<i>Myrcianthes fragrans</i>
93	Simpson Stopper	<i>Myrcianthes fragrans</i>
94	Simpson Stopper	<i>Myrcianthes fragrans</i>
95	Simpson Stopper	<i>Myrcianthes fragrans</i>
96	Simpson Stopper	<i>Myrcianthes fragrans</i>
97	Simpson Stopper	<i>Myrcianthes fragrans</i>
98	Simpson Stopper	<i>Myrcianthes fragrans</i>
99	Simpson Stopper	<i>Myrcianthes fragrans</i>

Tag	Common Name	Latin Name
100	Simpson Stopper	<i>Myrcianthes fragrans</i>
101	Simpson Stopper	<i>Myrcianthes fragrans</i>
102	Simpson Stopper	<i>Myrcianthes fragrans</i>
103	Simpson Stopper	<i>Myrcianthes fragrans</i>
104	Simpson Stopper	<i>Myrcianthes fragrans</i>
105	Simpson Stopper	<i>Myrcianthes fragrans</i>
106	Simpson Stopper	<i>Myrcianthes fragrans</i>
107	Simpson Stopper	<i>Myrcianthes fragrans</i>
108	Simpson Stopper	<i>Myrcianthes fragrans</i>
109	Simpson Stopper	<i>Myrcianthes fragrans</i>
110	Simpson Stopper	<i>Myrcianthes fragrans</i>
111	Simpson Stopper	<i>Myrcianthes fragrans</i>
112	Alexander Palm	<i>Archontophoenix alexandri</i>
113	Alexander Palm	<i>Archontophoenix alexandri</i>
114	Alexander Palm	<i>Archontophoenix alexandri</i>
115	Arecia Palm	<i>Dyopsis lutescens</i>
116	Arecia Palm	<i>Dyopsis lutescens</i>
117	Strangler Fig	<i>Ficus Aurea</i>
118	Arecia Palm	<i>Dyopsis lutescens</i>
119	Arecia Palm	<i>Dyopsis lutescens</i>
120	Arecia Palm	<i>Dyopsis lutescens</i>
121	Arecia Palm	<i>Dyopsis lutescens</i>
122	Arecia Palm	<i>Dyopsis lutescens</i>
123	Arecia Palm	<i>Dyopsis lutescens</i>
124	Arecia Palm	<i>Dyopsis lutescens</i>
125	Arecia Palm	<i>Dyopsis lutescens</i>
126	Arecia Palm	<i>Dyopsis lutescens</i>
127	Arecia Palm	<i>Dyopsis lutescens</i>
128	Arecia Palm	<i>Dyopsis lutescens</i>
129	Arecia Palm	<i>Dyopsis lutescens</i>
130	Arecia Palm	<i>Dyopsis lutescens</i>
131	Arecia Palm	<i>Dyopsis lutescens</i>
132	Arecia Palm	<i>Dyopsis lutescens</i>
133	Green Buttonwood	<i>Conocarpus erectus</i>
134	Strangler Fig	<i>Ficus Aurea</i>
135	Arecia Palm	<i>Dyopsis lutescens</i>
136	Arecia Palm	<i>Dyopsis lutescens</i>
137	Arecia Palm	<i>Dyopsis lutescens</i>
138	Arecia Palm	<i>Dyopsis lutescens</i>
139	Arecia Palm	<i>Dyopsis lutescens</i>
140	Arecia Palm	<i>Dyopsis lutescens</i>
141	Arecia Palm	<i>Dyopsis lutescens</i>
142	Green Buttonwood	<i>Conocarpus erectus</i>
143	Arecia Palm	<i>Dyopsis lutescens</i>
144	Arecia Palm	<i>Dyopsis lutescens</i>
145	Arecia Palm	<i>Dyopsis lutescens</i>
146	Arecia Palm	<i>Dyopsis lutescens</i>
147	Arecia Palm	<i>Dyopsis lutescens</i>
148	Arecia Palm	<i>Dyopsis lutescens</i>
149	Arecia Palm	<i>Dyopsis lutescens</i>
150	Arecia Palm	<i>Dyopsis lutescens</i>
151	Arecia Palm	<i>Dyopsis lutescens</i>
152	Arecia Palm	<i>Dyopsis lutescens</i>

751 NE 83rd Street
Miami, Florida 33138

Nathan VanDeman, RLA
Registered Landscape Architect
FL Lic. LA 6667174
(317) 442-2213
nathan@resolve.space

Project:

Keys Collection Site E
Landscape Improvements

Planning Board Submittal

SE Key West Owner VII LP

3840 N. Roosevelt Blvd
Key West, Florida

Designed: NVD

Drawn: NVD

Reviewed: NVD

Date Issued:

April 12, 2019

Revisions:
June 10, 2019 - City Comments

Sheet Title:
**Tree Disposition
Plan and Details**

Sheet Number:
LT1-01

TREE DISPOSITION SCHEDULE

Tag	Common Name	Latin Name	Height	Width	DBH "	Notes	Preserve	Transplant	Remove
1	Coconut Palm	Cocos nucifera	35'	20'	10"		x		
2	Coconut Palm	Cocos nucifera	30'	20'	10"		x		
3	Coconut Palm	Cocos nucifera	35'	20'	10"		x		
4	Coconut Palm	Cocos nucifera	30'	20'	10"		x		
5	Coconut Palm	Cocos nucifera	26'	20'	10"		x		
6	Coconut Palm	Cocos nucifera	35'	20'	10"		x		
7	Coconut Palm	Cocos nucifera	35'	20'	10"		x		
8	Coconut Palm	Cocos nucifera	30'	20'	10"		x		
9	Coconut Palm	Cocos nucifera	30'	20'	10"		x		
10	Coconut Palm	Cocos nucifera	26'	20'	10"		x		
11	Coconut Palm	Cocos nucifera	26'	20'	10"		x		
12	Coconut Palm	Cocos nucifera	30'	20'	10"		x		
13	Areca Palm	Dyopsis lutescens	30'	20'	10"		x		
14	Areca Palm	Dyopsis lutescens	26'	20'	10"		x		
15	Coconut Palm	Cocos nucifera	35'	20'	10"		x		
15a	Japanese Privet	Ligustrum japonicum	12'	12'	20" (aggr.)				
16	Coconut Palm	Cocos nucifera	35'	20'	10"		x		
16a	Japanese Privet	Ligustrum japonicum	12'	12'	20" (aggr.)				
17	Coconut Palm	Cocos nucifera	28'	20'	10"		x		
17a	MacArthur Palm	Ptychosperma macarthurii	25'	15'	24" (aggr.)		x		
18	Coconut Palm	Cocos nucifera	26'	20'	10"		x		
19	Areca Palm	Dyopsis lutescens	14'	12'	N/A			x	
20	Areca Palm	Dyopsis lutescens	14'	12'	N/A			x	
21	Areca Palm	Dyopsis lutescens	14'	12'	N/A			x	
22	Areca Palm	Dyopsis lutescens	14'	12'	N/A			x	
23	Strangler Fig	Ficus Aurea	25'	25'	36" (aggr.)	root prune per arborist report at minimum of 90 days prior to transplant	x		
24	Areca Palm	Dyopsis lutescens	14'	12'	N/A			x	
25	Dahoon Holly	Ilex Cassine	9'	6'	2"			x	
26	Areca Palm	Dyopsis lutescens	14'	12'	N/A			x	
27	Areca Palm	Dyopsis lutescens	14'	12'	N/A			x	
28	n/a	n/a							
29	Dahoon Holly	Ilex Cassine	9'	6'	2"			x	
30	Areca Palm	Dyopsis lutescens	14'	12'	N/A			x	
31	Dahoon Holly	Ilex Cassine	9'	6'	2"			x	
32	Areca Palm	Dyopsis lutescens	14'	12'	N/A			x	
33	Dahoon Holly	Ilex Cassine	9'	6'	2"			x	
34	Areca Palm	Dyopsis lutescens	14'	12'	N/A			x	
35	Dahoon Holly	Ilex Cassine	09'	6'	2"			x	
36	Areca Palm	Dyopsis lutescens	14'	12'	N/A			x	
36a	Dahoon Holly	Ilex Cassine	09'	6'	2"			x	
36b	Areca Palm	Dyopsis lutescens	14'	12'	N/A			x	
37	Christmas Palm	Adonidia merrillii	12'	8'	15 (5"x3)			x	
38	Christmas Palm	Adonidia merrillii	12'	8'	10 (5"x3)			x	
39	n/a	n/a							
40	Gumbo Limbo Tree	Bursera simaruba	15'	18'	20 (10"x10")			x	
41	Umbrella Tree	Schefflera actinophylla	17'	15'	16" (8"x8")	1/3 of structure and canopy missing, asymmetrical			x
42	Umbrella Tree	Schefflera actinophylla	15'	12'	8"	Asymmetrical w/ heavy lean			x
43	Gumbo Limbo Tree	Bursera simaruba	22'	25'	28"		x		
44	Umbrella Tree	Schefflera actinophylla	25'	25'	40"				x
45	Areca Palm	Dyopsis lutescens	14'	12'	N/A		x		
46	Areca Palm	Dyopsis lutescens	14'	12'	N/A		x		
47	Dahoon Holly	Ilex Cassine	9'	6'	2"		x		
48	Areca Palm	Dyopsis lutescens	14'	12'	N/A		x		
49	Dahoon Holly	Ilex Cassine	9'	6'	2"		x		
50	Areca Palm	Dyopsis lutescens	14'	12'	N/A		x		
51	Solitaire Palm	Ptychosperma elegans	12'	6'	N/A		x		
52	Areca Palm	Dyopsis lutescens	14'	12'	N/A		x		
53	Solitaire Palm	Ptychosperma elegans	12'	6'	N/A		x		
54	Gumbo Limbo Tree	Bursera simaruba	22'	10'	6"		x		
55	Areca Palm	Dyopsis lutescens	14'	12'	N/A		x		
56	Sabal Palm	Sabal palmetto	20'	8'	12"		x		
57	Areca Palm	Dyopsis lutescens	14'	12'	N/A		x		
58	Sabal Palm	Sabal palmetto	20'	8'	10"		x		
59	Areca Palm	Dyopsis lutescens	14'	12'	N/A		x		
60	Sabal Palm	Sabal palmetto	20'	8'	10"		x		
61	Areca Palm	Dyopsis lutescens	14'	12'	N/A		x		
62	Areca Palm	Dyopsis lutescens	14'	12'	N/A		x		
63	Gumbo Limbo Tree	Bursera simaruba	18'	12'	10"		x		
64	Areca Palm	Dyopsis lutescens	14'	12'	N/A		x		
65	Gumbo Limbo Tree	Bursera simaruba	16'	10'	6"		x		
66	Areca Palm	Dyopsis lutescens	14'	12'	N/A		x		
67	Areca Palm	Dyopsis lutescens	14'	12'	N/A		x		
68	Areca Palm	Dyopsis lutescens	14'	12'	N/A		x		
69	Areca Palm	Dyopsis lutescens	12'	6'	5"		x		
70	Areca Palm	Dyopsis lutescens	10'	6'	4"		x		
71	Areca Palm	Dyopsis lutescens	10'	6'	5"		x		
72	Areca Palm	Dyopsis lutescens	12'	6'	5"		x		
73	Areca Palm	Dyopsis lutescens	12'	12'	N/A			x	
74	Verawood	Bulnesia arborea	10'	6'	3"		x		
75	Verawood	Bulnesia arborea	10'	6'	3"		x		

20A Holly

53A
Areca
53B
Solitaire
53C
Areca

Tag	Common Name	Latin Name	Height	Width	DBH "	Notes	Preserve	Transplant	Remove
76	Paurotis Palm	Acrocladia wrightii	10'	6'	N/A		x		
77	n/a	n/a							
78	Areca Palm	Dyopsis lutescens	14'	12'	N/A			x	
79	Coconut Palm	Cocos nucifera	30'	20'	12"		x		
80	Coconut Palm	Cocos nucifera	25'	20'	12"		x		
81	Coconut Palm	Cocos nucifera	25'	20'	12"		x		
82	Avacado Tree	Persea americana	6'	3'	2.5"		x		
83	Avacado Tree	Persea americana	6'	3'	2.5"		x		
84	Avacado Tree	Persea americana	6'	3'	2.5"		x		
85	Avacado Tree	Persea americana	6'	3'	2.5"		x		
86	Simpson Stopper	Myrcianthes fragrans	6'	3'	1"		x		
87	Simpson Stopper	Myrcianthes fragrans	6'	3'	1"		x		
88	Simpson Stopper	Myrcianthes fragrans	6'	3'	1"		x		
89	Simpson Stopper	Myrcianthes fragrans	6'	3'	1"		x		
90	Simpson Stopper	Myrcianthes fragrans	6'	3'	1"		x		
91	Simpson Stopper	Myrcianthes fragrans	6'	3'	1"		x		
92	Simpson Stopper	Myrcianthes fragrans	6'	3'	1"		x		
93	Simpson Stopper	Myrcianthes fragrans	6'	3'	1"		x		
94	Simpson Stopper	Myrcianthes fragrans	6'	3'	1"		x		
95	Simpson Stopper	Myrcianthes fragrans	6'	3'	1"		x		
96	Simpson Stopper	Myrcianthes fragrans	6'	3'	1"		x		
97	Simpson Stopper	Myrcianthes fragrans	6'	3'	1"		x		
98	Simpson Stopper	Myrcianthes fragrans	6'	3'	1"		x		
99	Simpson Stopper	Myrcianthes fragrans	6'	3'	1"		x		
100	Simpson Stopper	Myrcianthes fragrans	6'	3'	1"		x		
101	Simpson Stopper	Myrcianthes fragrans	6'	3'	1"		x		
102	Simpson Stopper	Myrcianthes fragrans	6'	3'	1"		x		
103	Simpson Stopper	Myrcianthes fragrans	6'	3'	1"		x		
104	Simpson Stopper	Myrcianthes fragrans	6'	3'	1"		x		
105	Simpson Stopper	Myrcianthes fragrans	6'	3'	1"		x		
106	Simpson Stopper	Myrcianthes fragrans	6'	3'	1"		x		
107	Simpson Stopper	Myrcianthes fragrans	6'	3'	1"		x		
108	Simpson Stopper	Myrcianthes fragrans	6'	3'	1"		x		
109	Simpson Stopper	Myrcianthes fragrans	6'	3'	1"		x		
110	Simpson Stopper	Myrcianthes fragrans	6'	3'	1"		x		
111	Simpson Stopper	Myrcianthes fragrans	6'	3'	1"		x		
112	Alexander Palm	Archontophoenix alexandrae	25'	8'	N/A		x		
113	Alexander Palm	Archontophoenix alexandrae	25'	8'	N/A		x		
114	Alexander Palm	Archontophoenix alexandrae	25'	15'	N/A	Double Trunk	x		
115	Areca Palm	Dyopsis lutescens	14'	12'	N/A		x		
116	Areca Palm	Dyopsis lutescens	14'	12'	N/A		x		
117	Strangler Fig	Ficus Aurea	18'	25'	25"		x		
118	Areca Palm	Dyopsis lutescens	14'	12'	N/A		x		
119	Areca Palm	Dyopsis lutescens	14'	12'	N/A		x		
120	Areca Palm	Dyopsis lutescens	14'	12'	N/A		x		
121	Areca Palm	Dyopsis lutescens	14'	12'	N/A		x		
122	Areca Palm	Dyopsis lutescens	14'	12'	N/A		x		
123	Areca Palm	Dyopsis lutescens	14'	12'	N/A		x		
124	Areca Palm	Dyopsis lutescens	14'	12'	N/A		x		
125	Areca Palm	Dyopsis lutescens	14'	12'	N/A		x		
126	Areca Palm	Dyopsis lutescens	14'	12'	N/A		x		
127	Areca Palm	Dyopsis lutescens	14'	12'	N/A		x		
128	Areca Palm	Dyopsis lutescens	14'	12'	N/A		x		
129	Areca Palm	Dyopsis lutescens	14'	12'	N/A		x		
130	Areca Palm	Dyopsis lutescens	14'	12'	N/A		x		
131	Areca Palm	Dyopsis lutescens	14'	12'	N/A		x		
132	Areca Palm	Dyopsis lutescens	14'	12'	N/A		x		
133	Green Buttonwood	Conocarpus erectus	35'	25'	25"		x		
134	Strangler Fig	Ficus Aurea	18'	25'	25"	1/3 of main structure damaged and missing canopy	x		
135	Areca Palm	Dyopsis lutescens	14'	12'	N/A		x		
136	Areca Palm	Dyopsis lutescens	14'	12'	N/A		x		
137	Areca Palm	Dyopsis lutescens	14'	12'	N/A		x		
138	Areca Palm	Dyopsis lutescens	14'	12'	N/A		x		
139	Areca Palm	Dyopsis lutescens	14'	12'	N/A		x		
140	Areca Palm	Dyopsis lutescens	14'	12'	N/A		x		
141	Areca Palm	Dyopsis lutescens	14'	12'	N/A		x		
142	Green Buttonwood	Conocarpus erectus	15'	15'	4"		x		
143	Areca Palm	Dyopsis lutescens	14'	12'	N/A		x		
144	Areca Palm	Dyopsis lutescens	14'	12'	N/A		x		
145	Areca Palm	Dyopsis lutescens	14'	12'	N/A		x		
146	Areca Palm	Dyopsis lutescens	14'	12'	N/A		x		
147	Areca Palm	Dyopsis lutescens	14'	12'	N/A		x		
148	Areca Palm	Dyopsis lutescens	14'	12'	N/A		x		
149	Areca Palm	Dyopsis lutescens	14'	12'	N/A		x		
150	Areca Palm	Dyopsis lutescens	14'	12'	N/A		x		
151	Areca Palm	Dyopsis lutescens	14'	12'	N/A		x		
152	Areca Palm	Dyopsis lutescens	14'	12'	N/A		x		

Note: See LP1-01 for proposed locations of transplanted trees and palms, and proposed canopy plant material

RESOLVE

751 NE 83rd Street
Miami, Florida 33138

Nathan VanDeman, RLA
Registered Landscape Architect
FL Lic. LA 6667174
(317) 442-2213
nathan@resolve.space

Project:

Keys Collection Site E
Landscape Improvements

Planning Board Submittal

SE Key West Owner VII LP

3840 N. Roosevelt Blvd
Key West, Florida

Designed: NVD

Drawn: NVD

Reviewed: NVD

Date Issued:
April 12, 2019

Revisions:
June 10, 2019 - City Comments

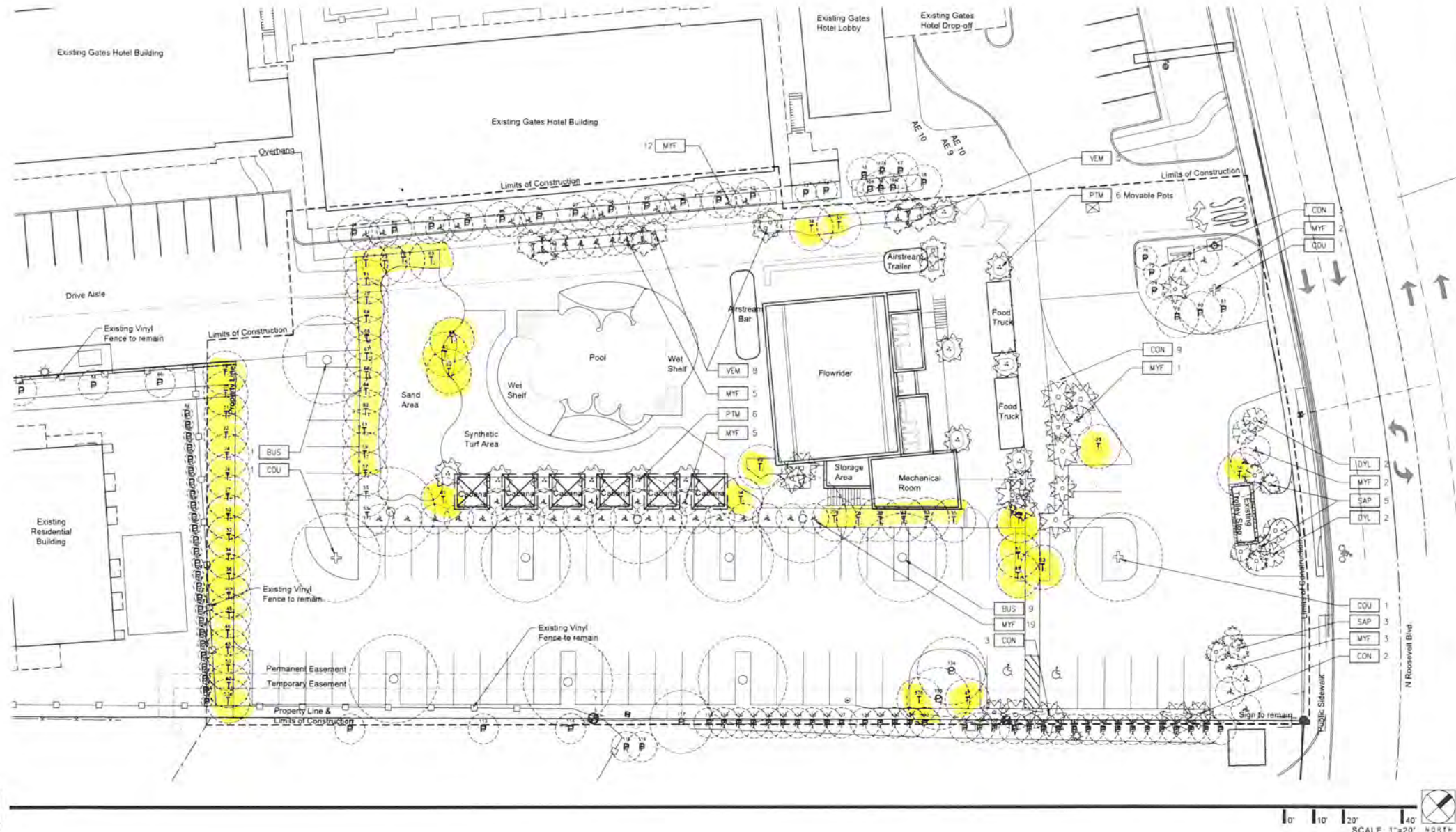
Sheet Title:
Tree Disposition
Schedule

Sheet Number:
LT2-00

CANOPY PLANTING LEGEND

10	BUS	Gumbo Limbo Tree	Bursera simaruba	5" cal, 20' ht, 15' Spr, 8' Clear Ht.	See plan	Field grown or collected Specimen
50	MYF1	Simpson's Stopper Tree	Myrcianthes fragrans	Multi 3" Cal., 12' oa., 4' clear ht.	8' O.C.	Field Grown, B&B
3	COU	Seagrape	Coccoloba uvifera	10" Cal., 25' ht., 20' spr. equal qty: 10' gw, 20' oa & 18' gw., 28' oa	7' O.C., see plan	field grown
17	CON	Coconut Palm	Cocos nucifera			Field Grown, B&B
13	VEM	Montgomery Palm	Veitchia montgomeryana	12' gw., 22' oa.	3' min, see plan	Field Grown, B&B
4	DYL	Areca Palm	Dypsis lutescens	12' ht., min. (8) 2" trunks, field grown	See plan	
12	PTM	Macarthur Palm	Ptychosperma macarthuri	12' Greywood, 20' ht., min. (3) 2" trunks		field grown
8	SAP	Sabal Palm	Sabal palmetto	7-10' Greywood		field grown

Note: See LP3-00 for full plant material specifications



RESOLVE

751 NE 83rd Street
Miami, Florida 33138

Nathan VanDeman, RLA
Registered Landscape Architect
FL Lic. LA 6667174
(317) 442-2213
nathan@resolve.space

Project:

Keys Collection Site E
Landscape Improvements

Planning Board Submittal

SE Key West Owner VII LP

3840 N. Roosevelt Blvd
Key West, Florida

Designed: NVD

Drawn: NVD

Reviewed: NVD

Date Issued:
April 12, 2019

Revisions:
June 10, 2019 - City Comments

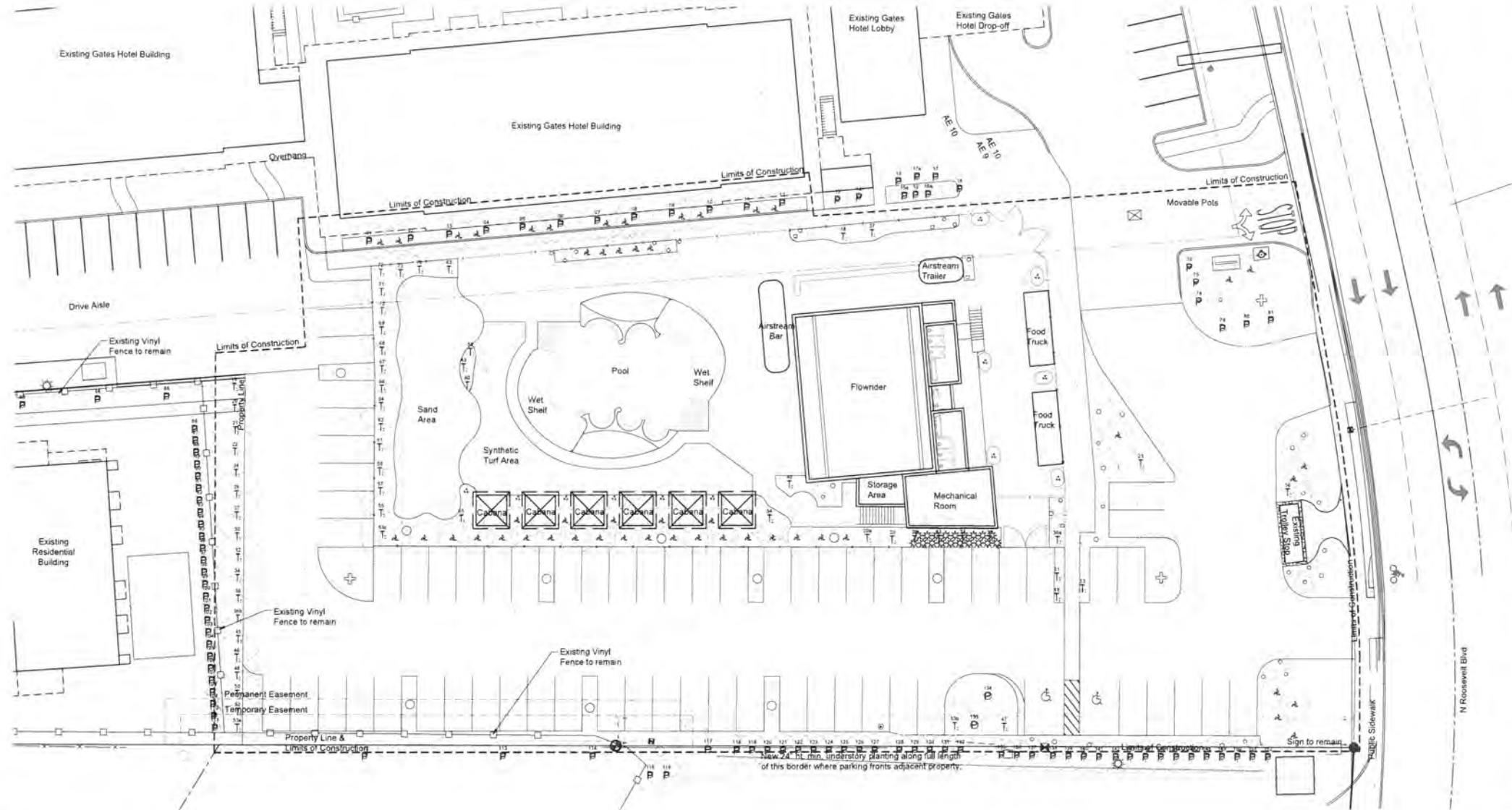
Sheet Title:
Canopy
Planting Plan

Sheet Number:
LP1-01

UNDERSTORY PLANTING LEGEND

Qty	Key	Common Name	Latin Name	Size	Spacing	Notes
TBD	ACD	Leather Fern	Acrostichum danaeifolium	7g, 36" ht.	36" O.C.	Florida #1
TBD	PSN	Wild Coffee	Psychotria nervosa	7g, 36" ht.	30" O.C.	Florida #1
TBD	RHE	Rhaphis Palm	Rhaphis excelsa	7g, 24" ht., full to ground	36" O.C.	Florida #1
TBD	ZAI	Coontie	Zamia integrifolia	7g, 24" ht., 24" spr.	30" O.C.	Florida #1
TBD	CHI	Red tip Cocoplum	Chrysobalanus icaco 'Red Tip'	7 gal., 36" ht., 36" spr., 36" O.C.		Florida #1
TBD	AOC	California Alocasia	Alocasia odora 'California'	3g, 24" ht., 24" spr.	24" O.C.	Florida #1
TBD	CAF	Yellow Canna	Canna flaccida	3g, 24" ht.	18" O.C.	Florida #1
TBD	PBM	Burle Marx Philodendron	Philodendron 'Burle Marx'	3g, 24" ht., 18" spr.	15" O.C.	Florida #1
TBD	NCR	Blue Walking Iris	Neomarica caerulea 'regina'	3g, 24" ht.	12" O.C.	Florida #1
TBD	ERL	Golden Creeper	Ernodea littoralis	3 gal., 12" ht., 18" spr., 24" O.C.	12" O.C.	Florida #1
TBD	IBM	Margarita Sweet Potato Vine	Ipomoea batatas 'margarita'	1g, 6" ht.	12" O.C.	Florida #1

Note: See LP3-00 for full plant material specifications



RESOLVE

751 NE 83rd Street
Miami, Florida 33138

Nathan VanDeman, RLA
Registered Landscape Architect
FL Lic. LA 6667174
(317) 442-2213
nathan@resolve.space

Project:
Keys Collection Site E
Landscape Improvements

Planning Board Submittal

SE Key West Owner VII LP

3840 N. Roosevelt Blvd
Key West, Florida

Designed: NVD
Drawn: NVD
Reviewed: NVD

Date Issued:
April 12, 2019

Revisions:
June 10, 2019 - City Comments

Sheet Title:
Understory
Planting Plan

Sheet Number:
LP2-01