

Parking Possibilities

To discourage single occupancy vehicle use; and
to create revenue for the General Fund

1) Truman Waterfront for Employee Parking

- 02/2019: Supported by SAB
- \$25/month for staff in Historic District
- Currently only at Park N Ride Garage
- Only during scheduled working hours
- Purchased at 6 month increments
- Visited by Loop every 20 minutes
- Predicted Revenue: \$3K



2) Employee Assistance Parking

- 02/2019: Supported by SAB
- For Commercial Historic District Staff to park in any Metered Street spots
- Value of Parking Space: \$1200/month
- Currently \$120/month
- Proposed \$175/month
- Not used by lower income staff
- No work shift specified
- Predicted Additional Revenue: \$132,000



3) Mallory Square

- 100 parking spaces, currently \$4/hour
- Used to be twice as much as all other parking.
- Predicted Extra Revenue @ \$5/hour: \$241K



4) Increase Residential Permit

- Currently \$10/year
- Demand outweighs supply
- Proposed \$20/year
- Predicted Additional Revenue \$110,000



5) Smathers Beach

- 150 parking spots on South Roosevelt.
 - Would need permit from FDOT (no \$ share)
 - Might drive more people to Higgs Beach
 - Will drive more people to gravel lot.
 - Would allow 4hrs free for locals.
 - Predicted Revenue: \$328K
- 65 parking spots at gravel lot.
 - To meter, will have to upgrade to not affect wetlands. At least one year more.
 - Cost to upgrade, \$362-500K
 - Predicted Revenue: \$95K



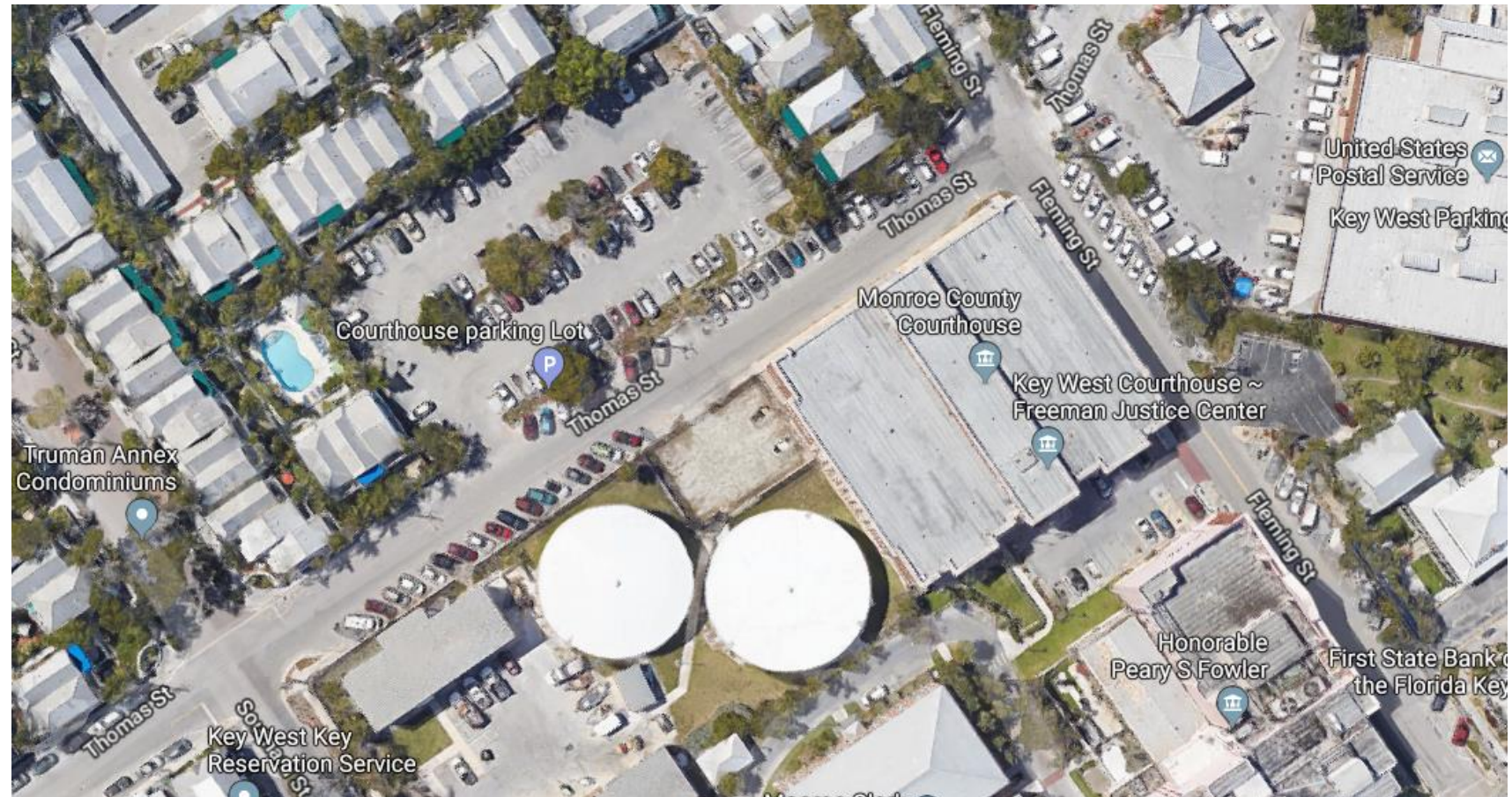
6) Courthouse Parking Lot

- 84 lot + 46 street parking spaces, after 6pm and on weekends.
- Have permission to meter it from County.
- Will have blowback from County residents who use it after hours (2015)

Survey:

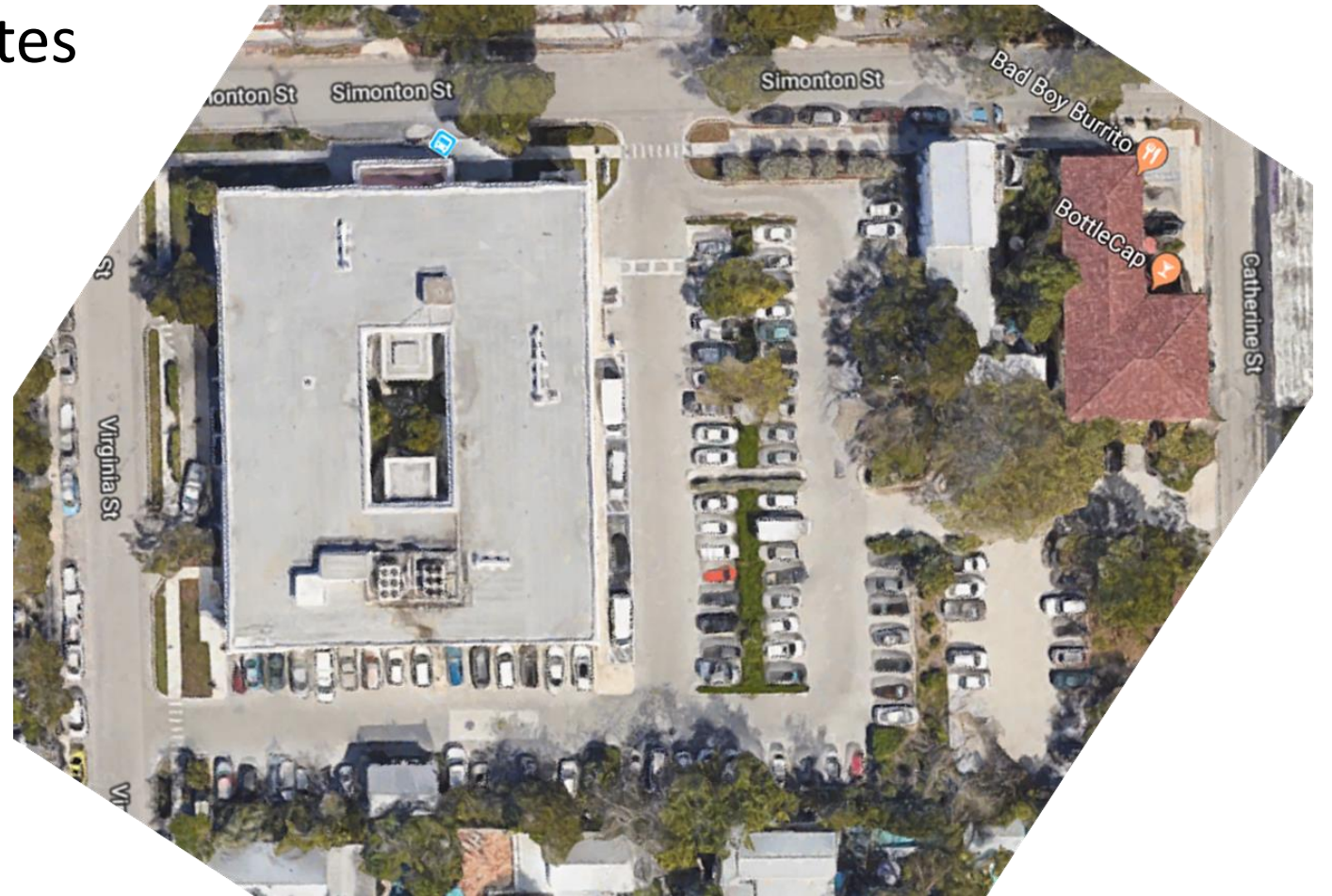
- 48% tourists
- 40% Monroe
- 12% Govt vehicles

Predicted Revenue:
\$244K



Look to: Gato

- Monroe County Owned
- 110 parking spaces, after 5:30pm and on weekends.
- Could be recommended parking for Monroe residents.
- Visited by Loop every 20 minutes
- Not deep downtown.



Summary:

Action	Estimate
1) TW Employee Permit	\$ 3,000
2) Emp Assistance Permit	\$ 132,000
3) Mallory Square \$5	\$ 241,000
4) Residential Permit Increase	\$ 110,000
5) Smathers Beach Metering	\$ 328,000
6) Courthouse Parking	\$ 244,500
TOTAL:	\$ 1,058,500