



THE CITY OF KEY WEST
Tree Commission

Post Office Box 1409 - Key West, FL 33041-1409
Telephone: 305-809-3725

May 9, 2018

City of Key West
Attn: Karen Olsen
PO Box 1409
Key West, FL 33041

To Whom It May Concern:

The City of Key West Tree Commission recently considered your permit application T18-8977 for Conceptual Landscape Design at the Key West Historic Seaport at their regularly scheduled meeting on May 8, 2018.

The Tree Commission approved the Conceptual Landscape Plan with the understanding that you would incorporate the Urban Forester's comments and suggestions into your final plan. Once you have received approval from other departments and boards, application should be made again to the Tree Commission for Final Landscape Plan approval with Tree Removal.

If you have any questions, please call the office at (305) 809-3768.

Sincerely,

A handwritten signature in black ink, appearing to read "David Jackson", written over a horizontal line.

David Jackson
Chairman, Tree Commission

A handwritten signature in blue ink, appearing to read "Karen DeMaria", written over a horizontal line.

Karen DeMaria
Urban Forestry Manager
kdemaria@cityofkeywest-fl.gov

STAFF REPORT

DATE: May 2, 2018

RE: **Key West Historic Seaport (permit application # T18-8977)**

FROM: Karen DeMaria, City of Key West Urban Forestry Manager

An application was received requesting the review of a conceptual landscape plan in association with the proposed renovations at the Key West Historic Seaport area. This review will be discussed in stages.

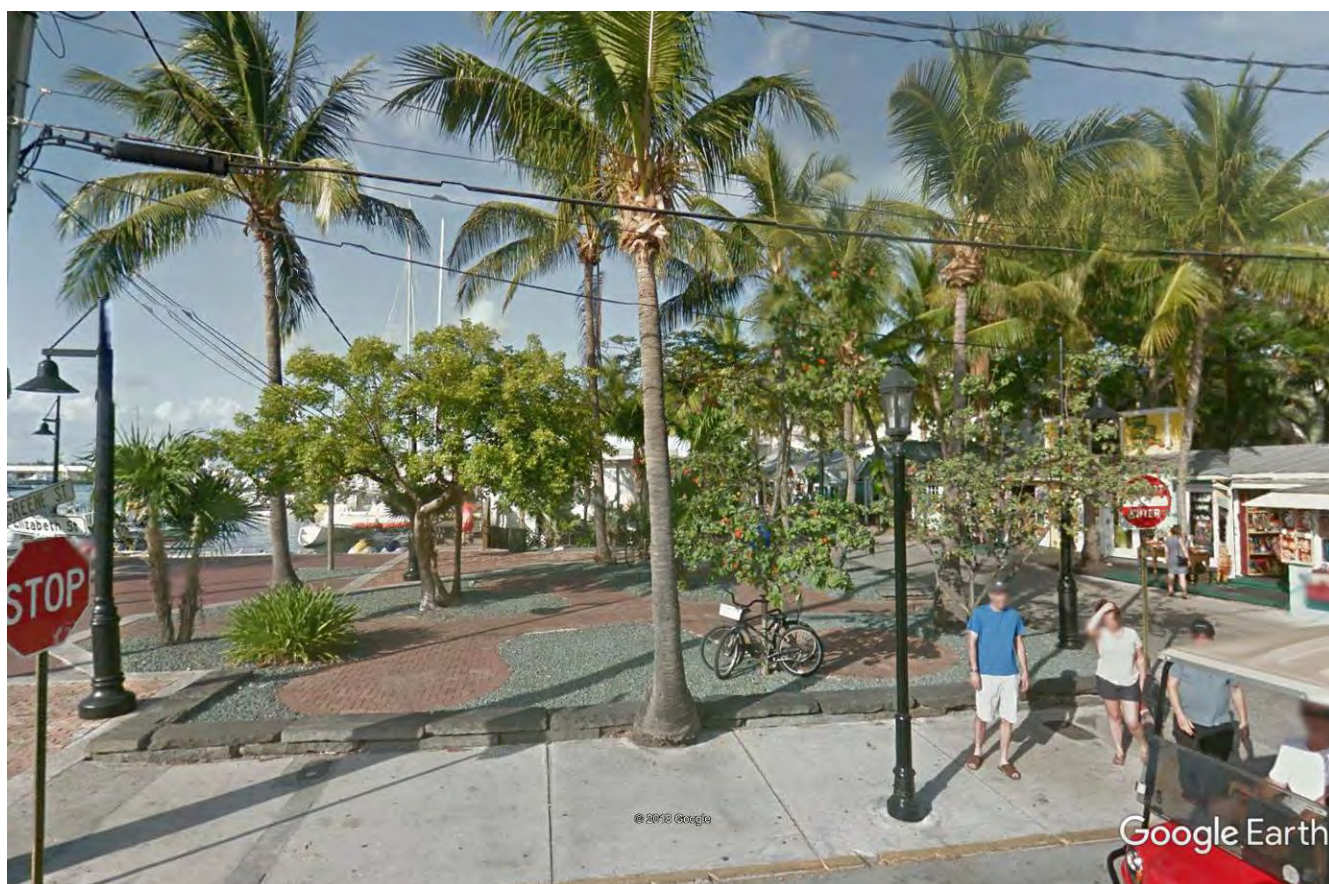
Area #1: Greene Street & Lazy Way

The City Port and Marine Services department is requesting to transplant/remove (7) Coconut Palms, transplant (5) Thatch Palms, and remove (4) Coconut Palms, (4) Orange Geiger trees, and (1) Gumbo Limbo tree from this area.



Google aerial photo of proposed work area (December 2017).

The following photos are Google Streetview photos of the proposed work area (dated July 2015).





July
2015





Lazy Way



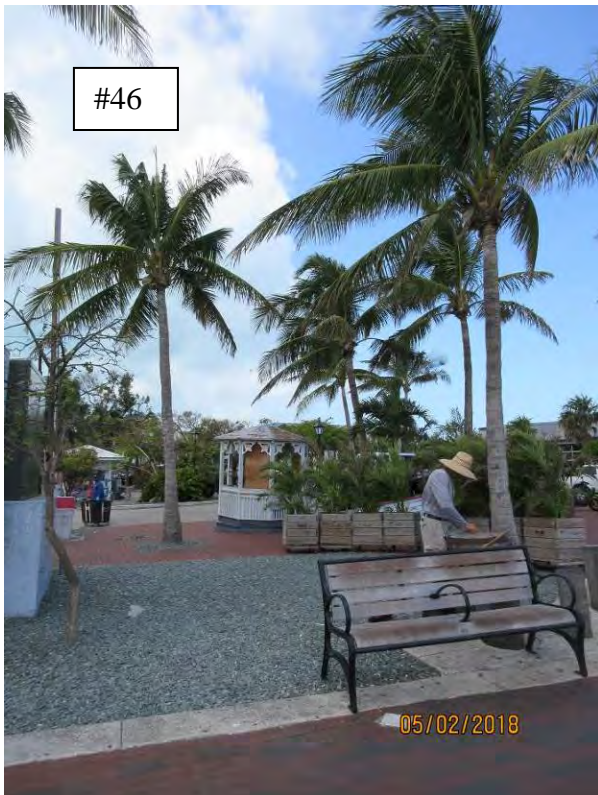


Elizabeth Street



Seven Coconut Palms are slated to be transplanted/removed. A specific evaluation and determination needs to be made with a reason as to why they can not remain. Below are some comments and photos of these palms:

#48



#38
Top and
bottom of
palm



#4, 5, and 6

#7 selected to
be removed





#3

Why do Palms #3, 4, 5, and 6 need to be removed? Transplanting may cause a mess and a great disturbance to the area.

Same for why palms #7 and 8 in that same line of palms, are slated for removal?

Palms #46 and #48 if they can not remain, should be transplanted.

Palm #38 is too tall to be transplanted and due to its condition, would be a candidate for removal.

Five Thatch Palms are slated to be transplanted:



#44

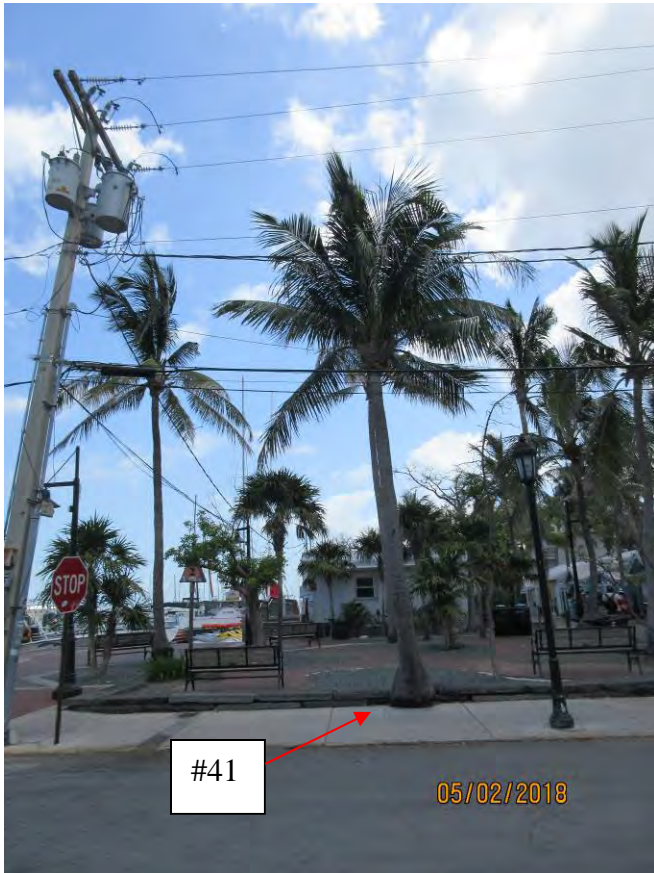


#42



The removal of (4) Coconut Palms, if approved, will require the replacement of (4) approved palms, 4 ft tall each palm, to be planted on site.





Agree with the recommendation to remove Coconut Palm #41 and #51B.

Four (4) Geiger trees and one (1) Gumbo Limbo tree are slated to be removed. Below are the replacement values for these trees if removal is approved:

Geiger tree #10





05/02/2018



Diameter: 4.7"

Location: 100%

Species: 100% (on protected tree list)

Condition: 50% (fair to poor-poor structure, tear in main trunk)

Total Average Value = 83%

Value x Diameter = 3.9 replacement caliper inches



Geiger tree #40





05/02/2018



05/02/2018



Diameter: 4.1"

Location: 100%

Species: 100% (on protected tree list)

Condition: 40% (poor)

Total Average Value = 80%

Value x Diameter = 3.2 replacement caliper inches

Geiger tree #47







BICYCLE
IN RACK
BE REMOVED
THE CITY
KEY W

05/02/2018





Diameter: 6.2"

Location: 70% (planted close to utility box)

Species: 100% (on protected tree list)

Condition: 50% (fair to poor, poor structure-decay)

Total Average Value = 73%

Value x Diameter = 4.5 replacement caliper inches

Geiger tree #49





05/02/2018



Diameter: 2.8"

Location: 100%

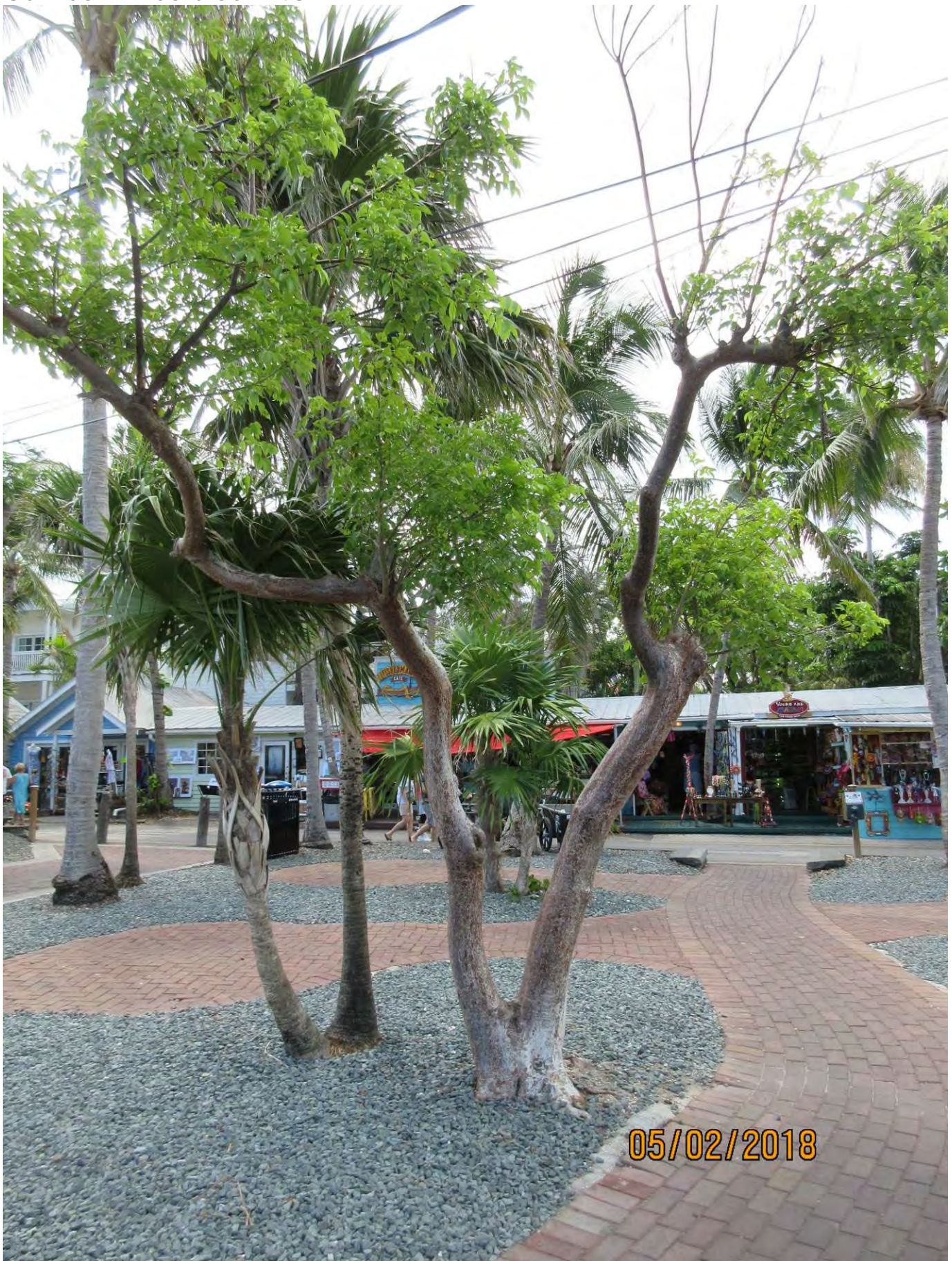
Species: 100% (on protected tree list)

Condition: 50% (fair to poor, poor structure, tear into main trunk of tree)

Total Average Value = 83%

Value x Diameter = 2.3 replacement caliper inches

Gumbo Limbo tree #43









05/02/2018





Diameter: 14.9" (two trunks)

Location: 60% (canopy impacted by utility lines)

Species: 100% (on protected tree list)

Condition: 50% (fair to poor, old canopy cuts have resprouted, poor canopy structure)

Total Average Value = 70%

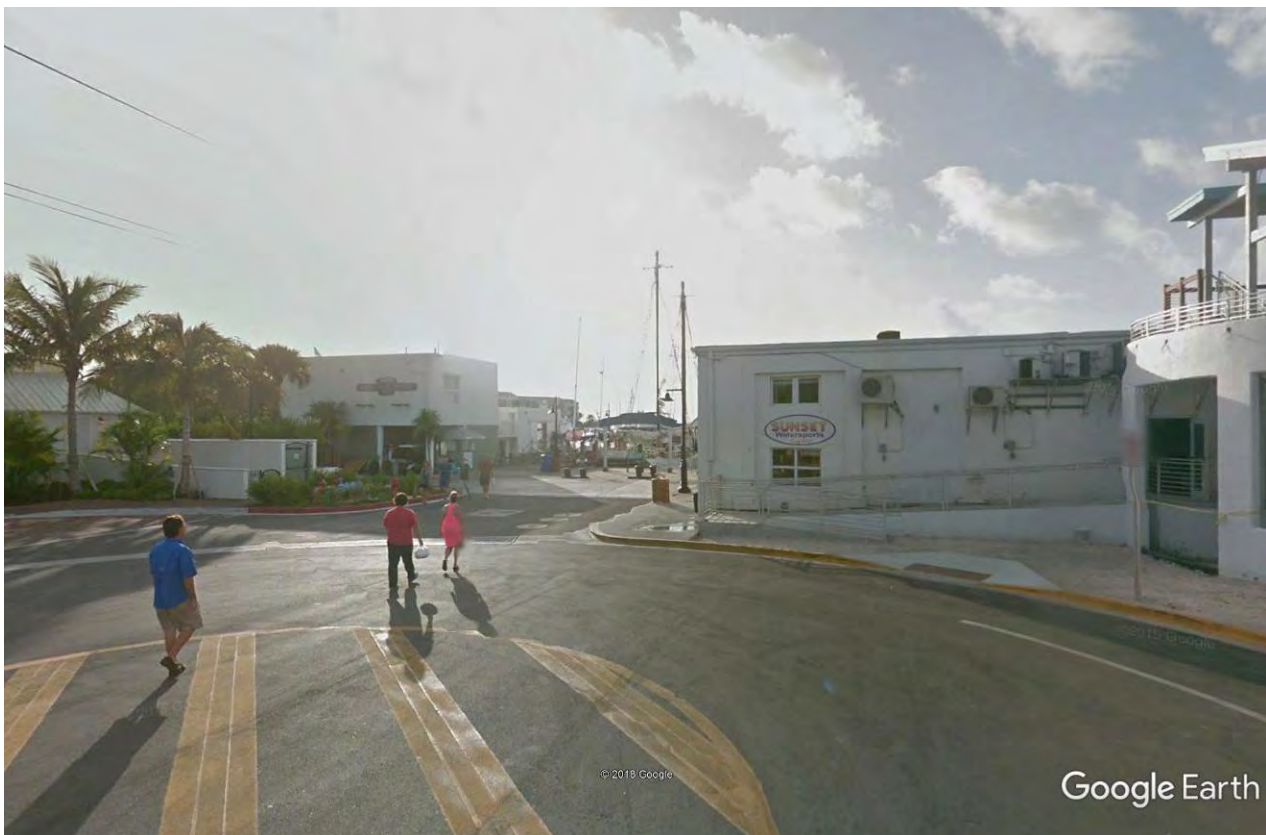
Value x Diameter = 10.4 replacement caliper inches

If permits were approved today, the proposed landscaping does not incorporate the required tree replacements. It appears to incorporate most if not all the required palm replacements for this area and does incorporate the Thatch palm transplants. Where will the coconut palm transplants be planted?

Do not recommend the planting of saw palmetto in the area as it has a low traveling growth and thorny type structures along the petiole of the frond.

Area #2 William Street Plaza

The following photos are of the proposed work area dated July 2015.



Proposed work in this area includes the removal of three (3) Christmas Palms and the transplanting of three (3) young Thatch palms. The following photos are recent photos of the area.



These are some of the Thatch palms that are to be transplanted (where to?).



These Christmas Palms are proposed to be removed. It appears that shrubs will be replanted in this area. Do not recommend removal of these palms. Why do they need to be moved from this area? At the very least, transplant these trees to another location, either in the area or a street planter in old town.



This area to
be enhanced
with
additional
landscaping.



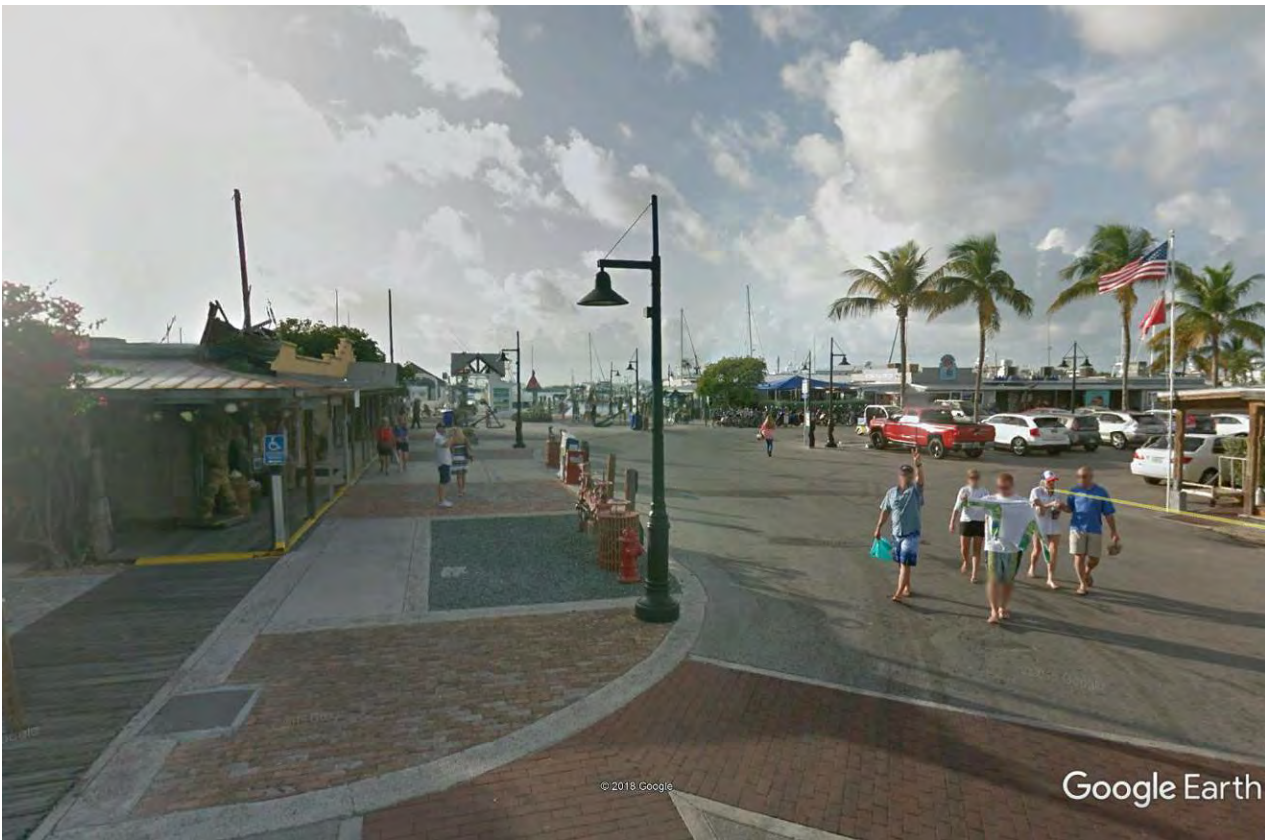
This Thatch Palm is not noted on the plans but is in the project boundaries.

Only shrubs and groundcover are to be added to this proposed work area. Do not recommend the planting of saw palmetto.

Area #3 Margaret Street Plaza



July 2017



July 2017

Below are recent photos of the proposed work areas. All existing palms and trees are to remain and the area enhanced with additional landscaping.







The landscape plan proposes to add tree planters with Pigeon Plum trees along the Margaret Street store front area. Would possibly like to see two or three different species of trees instead of all seven new trees being the same species or is there a certain look for the area that is being developed? The landscape plan says Thatch palms will be transplanted into this area. Where from and where on the plans?

Recommendation: There are still a number of questions that need to be answered before this plan can move forward for approval. Recommend postponing any permit decisions until plan has been reviewed by HARC and tree questions have been answered.

Also, final plans need to include a tree protection plan for proposed work near the trees and palms.



what does
transplant/remove
mean? pick one
(clarify)
where are transplants going?

NUMBER	BOTANICAL NAME	COMMON NAME	HEIGHT	SPREAD	CALIPER	CONDITION	STATUS
1	Cocos nucifera	Coconut Palm	30-35	20'	8-12"	Fair	Remain
2	Cocos nucifera	Coconut Palm	30-35	20'	8-12"	Fair	Remain
3	Cocos nucifera	Coconut Palm	30-35	20'	8-12"	Fair	Transplant/Remove
4	Cocos nucifera	Coconut Palm	30-35	20'	8-12"	Fair	Transplant/Remove
5	Cocos nucifera	Coconut Palm	30-35	20'	8-12"	Fair	Transplant/Remove
6	Cocos nucifera	Coconut Palm	30-35	20'	8-12"	Fair	Transplant/Remove
7	Cocos nucifera	Coconut Palm	30-35	20'	8-12"	Fair/Adv. Roots	Remove
8	Cocos nucifera	Coconut Palm	30-35	20'	8-12"	Fair/Adv. Roots	Remove
9	Thrinax radiata	Thatch Palm	3	8'	4-6" (2)	Fair	Remain
10	Cordia sebestena	Orange Gager	6-12'	8-12'	3-4"	Poor	Remove
11	Cocos nucifera	Coconut Palm	30-35	20'	8-12"	Fair/Adv. Roots	Remain
12	Cocos nucifera	Coconut Palm	30-35	20'	8-12"	Fair/Scarring	Remain
13	Cocos nucifera	Coconut Palm	30-35	20'	8-12"	Good	Remain
14	Delonix regia	Poinciana	20-25'	15-20'	12"	Fair	Remain
15	Thrinax radiata	Thatch Palm	3	8'	4-6"	Fair	Remain
16	Thrinax radiata	Thatch Palm	8-10'	8'	4-6"	Fair	Remain
17	Thrinax radiata	Thatch Palm	8-10'	8'	4-6" (3)	Fair	Remain
18	Cocos nucifera	Coconut Palm	30-35	20'	8-12"	Fair	Remain
19	Thrinax radiata	Thatch Palm	6-8'	8'	4-6"	Fair	Remain
20	Thrinax radiata	Thatch Palm	3-4'	8'	4-6" (3)	Fair	Remain
21	Adonis aemula	Christmas Palm	10-12'	8-10'	Double	Fair	Remain
22	Thrinax radiata	Thatch Palm	8-10'	8'	4-6"	Fair	Remain
23	Bursera simarouba	Gumbo Limbo	20-25'	15-20'	6-8" (2)	Fair	Remain
24	Thrinax radiata	Thatch Palm	4-5'	8'	4-6" (2)	Fair	Remain
25	Thrinax radiata	Thatch Palm	4-6'	8'	4-6" Multi	Fair	Remain
26	Thrinax radiata	Thatch Palm	4-8'	8'	4-6" Multi	Fair	Remain
27	Cocos nucifera	Coconut Palm	30-35	20'	8-12"	Fair	Remain
28	Thrinax radiata	Thatch Palm	8-10'	8'	4-6"	Fair	Remain
29	Bursera simarouba	Gumbo Limbo	20-25'	15-20'	16"	Fair	Remain
30	Not Applicable						
31	Thrinax radiata	Thatch Palm	2-4'	8'	4-6"	Fair	Remain
32	Thrinax radiata	Thatch Palm	12-14'	8'	4-6"	Fair	Remain
33	Thrinax radiata	Thatch Palm	2-4'	8'	4-6"	Fair	Remain
34	Thrinax radiata	Thatch Palm	12-14'	8'	4-6"	Fair	Remain
35	Thrinax radiata	Thatch Palm	3-4'	8'	4-6"	Fair	Remain
36	Thrinax radiata	Thatch Palm	8-10'	8'	4-6"	Fair	Transplant
37	Thrinax radiata	Thatch Palm	8-10'	8'	4-6"	Fair	Transplant
38	Cocos nucifera	Coconut Palm	30-35	20'	8-12"	Fair	Transplant/Remove
39	Thrinax radiata	Thatch Palm	6-8'	8'	4-6" (2)	Fair	Transplant
40	Cordia sebestena	Orange Gager	8-12'	4-8'	3-4"	Poor	Remove
41	Cocos nucifera	Coconut Palm	30-35	20'	8-12"	Fair	Remove
42	Thrinax radiata	Thatch Palm	6-14'	8'	4-6" (2)	Fair	Transplant
43	Bursera simarouba	Gumbo Limbo	6-10'	15-20'	6-8" (2)	Poor	Remove
44	Thrinax radiata	Thatch Palm	6-8'	8'	4-6" (2)	Fair	Transplant
45	Cocos nucifera	Coconut Palm	30-35	20'	8-12"	Fair	Remain
46	Cocos nucifera	Coconut Palm	30-35	20'	8-12"	Fair	Transplant/Remove
47	Cordia sebestena	Orange Gager	8-12'	6-12'	3" (2)	Poor	Remove
48	Cocos nucifera	Coconut Palm	30-35	20'	8-12"	Fair	Transplant/Remove
49	Cordia sebestena	Orange Gager	8-12'	6-12'	3"	Poor	Remove
50	Cocos nucifera	Coconut Palm	30-35	20'	8-12"	Fair	Remain
51A	Thrinax radiata	Thatch Palm	6-8'	8'	4-6"	Fair	Remain
51B	Cocos nucifera	Coconut Palm	30-35	20'	8-12"	Fair/Adv. Roots	Remove

Remove
transplant
Sample in 5-18

LEGEND

EXISTING PALM

EXISTING TREE

PROJECT LIMIT LINE

HISTORIC SEAPORT HARBORWALK - EXISTING TREE DISPOSITION PLAN AREA #1 GREENE & LAZY WAY

SCALE: 1/16" = 1'-0"

KEY WEST HISTORIC SEAPORT
PHASE II
KEY WEST, FLORIDA

WILLIAM P. HORN
ARCHITECT, P.A.

915 CATON ST.
KEY WEST,
FLORIDA
33048

TEL: (305) 296-5302
FAX: (305) 296-1033

LICENSE NO.
AA 000360

KEY WEST
HISTORIC
SEAPORT
PHASE II

KEY WEST RIGHT
KEY WEST FL 33048

ELIZABETH
NEWLAND

LANDSCAPE
ARCHITECTURE, LLC

2525 Ponce de Leon
Blvd., Suite 300
Coral Gables, Florida 33134
(305) 461-1031
enewland@earthlink.net

SEAL

THESE DRAWINGS MAY
NOT BE REPRODUCED
WITHOUT WRITTEN
AUTHORIZATION BY
WILLIAM P. HORN

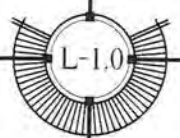
DATE

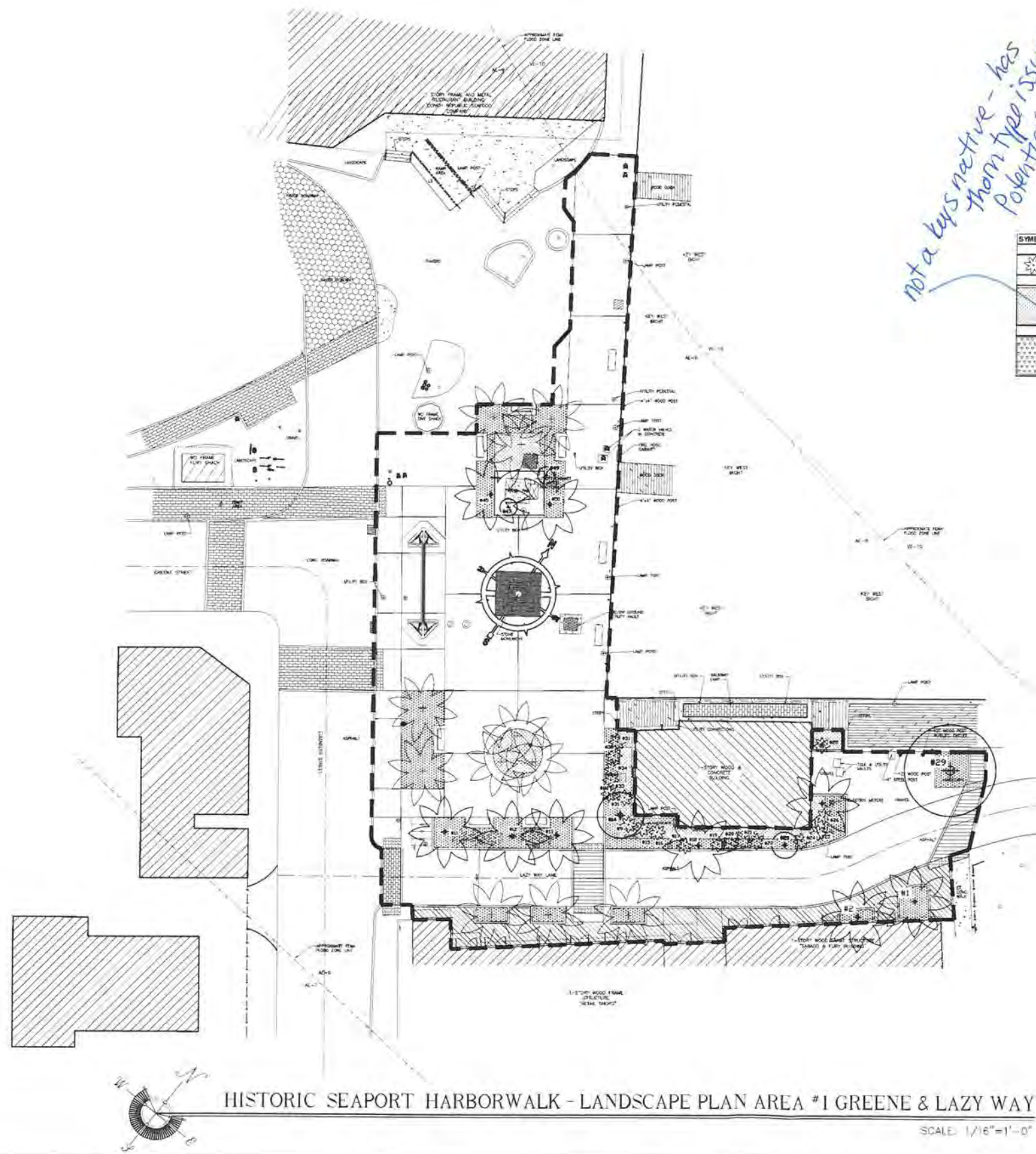
12-19-17 PHASE 2 REVISED
04-10-18 TREE COMMISSION

REVISIONS

DRAWN BY
JW

PROJECT
NUMBER
1609





not a key native - has
thorn type issues.
Potential Ferno
Mammaries, 15005

please clarify - specifies
on where and
which ones.

SYMBOL	KEY	QTY L-1.1	SCIENTIFIC NAME	COMMON NAME	NATIVE	CALIPER	HEIGHT	CANOPY	CONTAINER	SPACING	CONDITION
	PALMS										
	CON	12	Coccothrinax 'Green Malayan'	Green Malayan Coconut	No	10'-12"	14'-16' CT	15'-20'	B&B	As Shown	
	THR	3	Thrinax radiata	Thatch Palm	Yes	4'-6"	6'-8' GA	6'-8'	B&B	As Shown	Transplant From Site
	MEDIUM SHRUBS										
	BRL		Brysonia lucida	Locust Berry	Yes	NA	24"-36"	24"-36"	7 Gal	24" OC	
	PSL	216	Psychotria ligustrifolia	Dwarf Wild Coffee	Yes	NA	18"-24"	18"-24"	7 Gal	24" OC	
	SAB		Savillea bahamensis	Maiden Bush	Yes	NA	18"-24"	18"-24"	7 Gal	24" OC	
	SER		Sesuvia repens	Saw Palmetto	Yes	NA	36"-48"	36"-48"	15 Gal	24" OC	Silver
	GROUND COVER										
	ERL	1722	Ernstia litoralis	Sea Oe Eye Daisy	Yes	NA	12"-18"	12"-18"	1 Gal	12" OC	
	FM		Ficus microcarpa 'Green Island'	Green Island Ficus	No	NA	12"-18"	12"-18"	3 Gal	12" OC	
	MIS		Microsorium scolopendrium	Wart Fern	No	NA	12"-18"	12"-18"	1 Gal	12" OC	

WILLIAM P. HORN
ARCHITECT, P.A.

915 E. TON ST.
KEY WEST,
FLORIDA
33040

TEL: (305) 296-3300
FAX: (305) 296-1033

LICENSE NO.
6003046

KEY WEST
HISTORIC
SEAPORT
PHASE II

KEY WEST BIGHT
KEY WEST, FL 33909

ELIZABETH
NEWLAND

LANDSCAPE
ARCHITECTURE, LLC

2502 Ponce de Leon
Blvd., Suite 300
Key West, Florida 33901
(305) 407-8201
enewland@comcast.net

SEAL

THESE DRAWINGS MAY
NOT BE REPRODUCED
WITHOUT WRITTEN
AUTHORIZATION BY
WILLIAM P. HORN

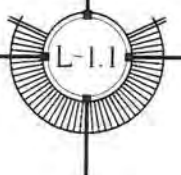
DATE

12-19-17 PHASE 2 REVISED
08-10-18 TREE COMMISSION

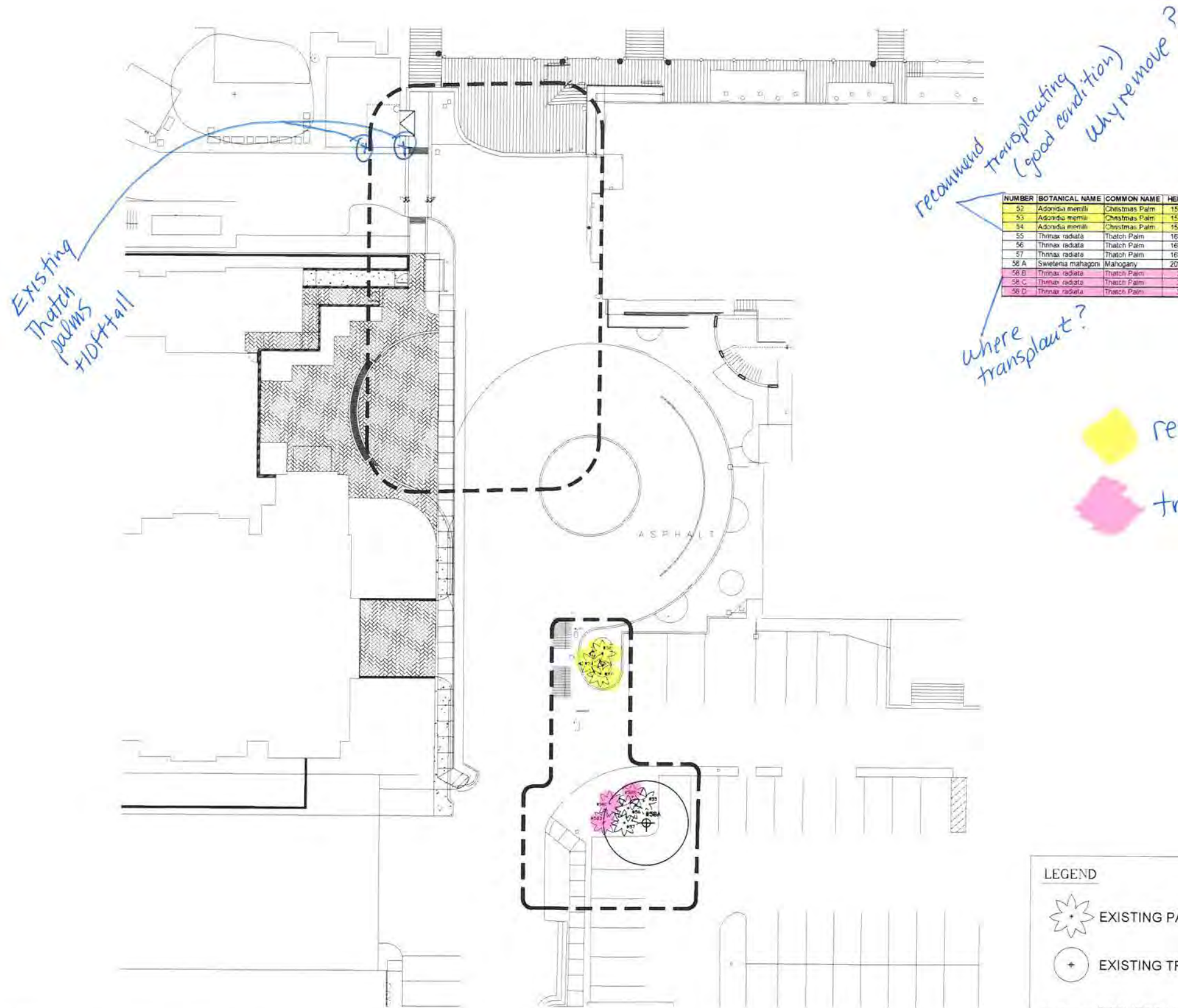
REVISIONS

DRAWN BY
JW

PROJECT
NUMBER
1609



KEY WEST HISTORIC SEAPORT
PHASE II
KEY WEST, FLORIDA



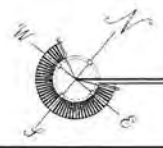
NUMBER	BOTANICAL NAME	COMMON NAME	HEIGHT	SPREAD	CALIPER	CONDITION	STATUS
52	Adonidia merillii	Christmas Palm	15-20'	8-10'	Multi	Fair	Remove
53	Adonidia merillii	Christmas Palm	15-20'	8-10'	Multi	Fair	Remove
54	Adonidia merillii	Christmas Palm	15-20'	8-10'	Multi	Fair	Remove
55	Thrinax radiata	Thatch Palm	16-20'	8'	4"-6"	Fair	Remain
56	Thrinax radiata	Thatch Palm	16-20'	8'	4"-6"	Fair	Remain
57	Thrinax radiata	Thatch Palm	16-20'	8'	4"-6"	Fair	Remain
58 A	Sweetenia mahagoni	Mahogany	20-30'	20-30'	24"	Good	Remain
58 B	Thrinax radiata	Thatch Palm	3'	6'	4"	Fair	Transplant
58 C	Thrinax radiata	Thatch Palm	3'	6'	4" (Multi)	Fair	Transplant
58 D	Thrinax radiata	Thatch Palm	3'	6'	4" (Multi)	Fair	Transplant

LEGEND

★ EXISTING PALM

○ EXISTING TREE

--- PROJECT LIMIT LINE



HISTORIC SEAPORT HARBORWALK - EXISTING TREE DISPOSITION PLAN - AREA #2 WILLIAM STREET PLAZA

SCALE: 1/16" = 1'-0"

KEY WEST HISTORIC SEAPORT
PHASE II
KEY WEST, FLORIDA

WILLIAM P. HORN
ARCHITECT, P.A.

915 EATON ST.
KEY WEST,
FLORIDA
33040

TEL: (305) 296-5302
FAX: (305) 296-1633

LICENSE NO.
AA 0003040

KEY WEST HISTORIC
SEAPORT
PHASE II

KEY WEST RIGHT
KEY WEST, FL 33040

**ELIZABETH
NEWLAND**
LANDSCAPE
ARCHITECTURE, LLC

2525 Ponce de Leon
Blvd., Suite 300
Coral Gables, Florida 33134
(305) 441-5331
enewland@earthlink.net

SEAL

THESE DRAWINGS MAY
NOT BE REPRODUCED
WITHOUT WRITTEN
AUTHORIZATION BY
WILLIAM P. HORN

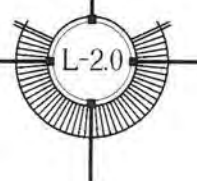
DATE

12-19-17 PHASE 2 REVISED
04-10-18 TREE COMMISSION

REVISIONS

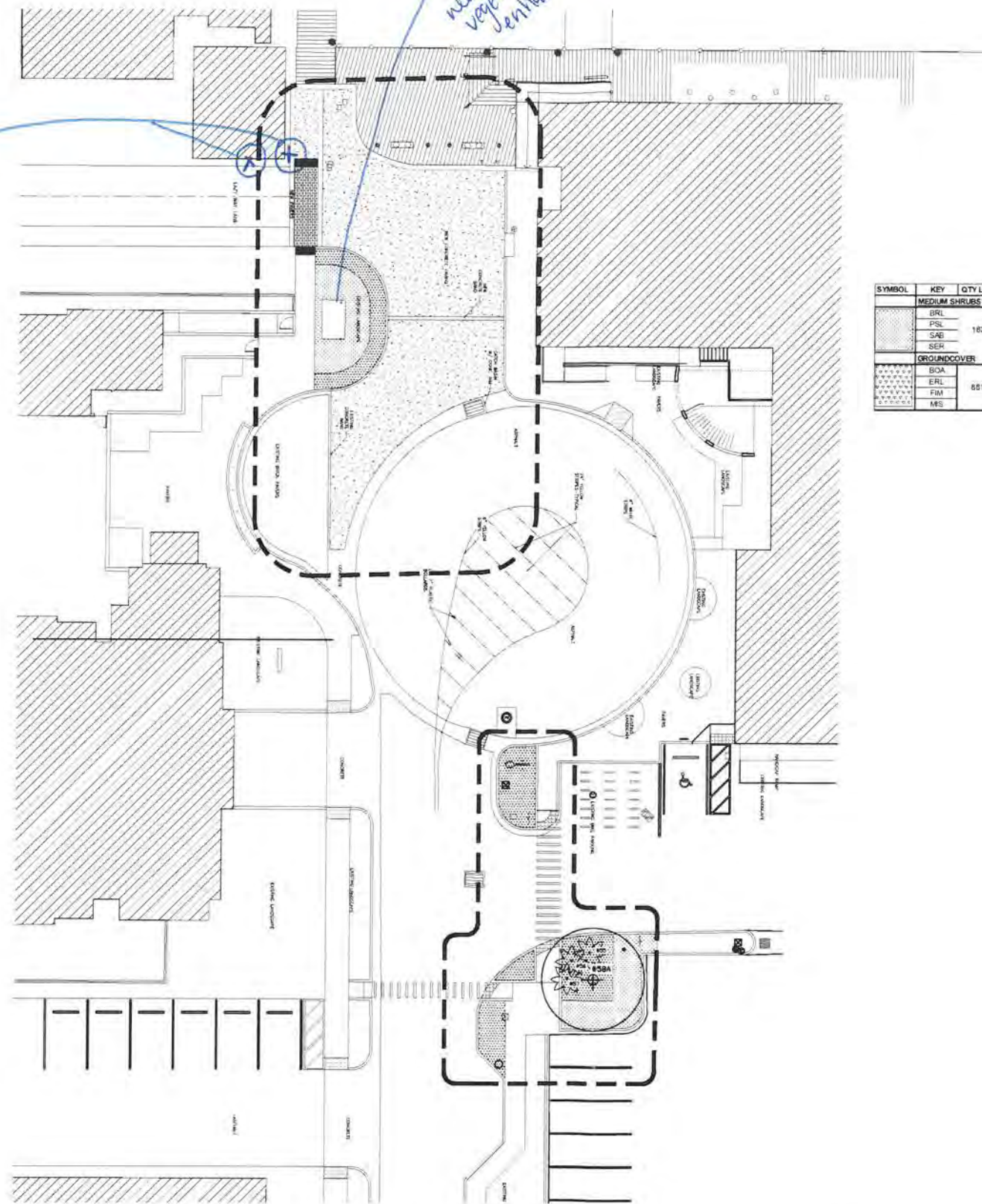
DRAWN BY
JW

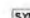

PROJECT
NUMBER
1609



Existing
Thatch
Palms
+ 10ft+ tall

Yes!
area
needs
vegetative
enhancements



SYMBOL	KEY	QTY L-2.1	SCIENTIFIC NAME	COMMON NAME	NATIVE	CALIPER	HEIGHT	CANOPY	CONTAINER	SPACING	CONDITION
MEDIUM SHRUBS											
	BRL	162	Brysonima lucida	Lorax Berry	Yes	NA	24'-36"	24'-36"	7 Gal	24" OC	
	PSL		Psychotria ligustrifolia	Dwarf Wild Coffee	Yes	NA	18'-24"	18'-24"	7 Gal	24" OC	
	SAB		Sava bahamensis	Maiden Bush	Yes	NA	18'-24"	18'-24"	7 Gal	24" OC	
	SER		Serenoa repens	Saw Palmetto	Yes	NA	36'-48"	36'-48"	15 Gal	24" OC	Silver
GROUND COVER											
	BIA	651	Borricha frutescens	Sea Ox-Eye Daisy	Yes	NA	12'-18"	12'-18"	1 Gal	12" OC	
	ERL		Emodia littoralis	Golden Creeper	Yes	NA	12'-18"	12'-18"	1 Gal	12" OC	
	FIM		Ficus microcarpa Green Island	Green Island Ficus	No	NA	12'-18"	12'-18"	3 Gal	12" OC	
	MS		Microsorium scolopendrium	Wart Fern	No	NA	12'-18"	12'-18"	1 Gal	12" OC	

Handwritten signature
5-2-18

WILLIAM P. HORN
ARCHITECT, P.A.

915 EATON ST.
KEY WEST,
FLORIDA
33040

TEL: (305) 296-1032
FAX: (305) 296-1033

LICENSE NO.
AA 0002040

KEY WEST
HISTORIC
SEAPORT
PHASE II

KEY WEST RIGHT
KEY WEST, FL 33040

ELIZABETH
NEWLAND
LANDSCAPE
ARCHITECTURE, LLC
10225 Ponce de Leon
Blvd., Suite 300
Coral Gables, Florida 33154
(305) 451-6501
enewland@elizabethnewland.com

SE-41

THESE DRAWINGS MAY
NOT BE REPRODUCED
WITHOUT WRITTEN
AUTHORIZATION BY
WILLIAM P. HORN

DATE

12-19-17 PHASE 2 REVISED
04-10-18 TREE COMMISSION

REVISIONS

DRAWN BY
JW

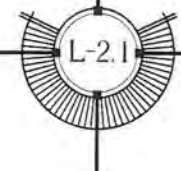
PROJECT
NUMBER
1609

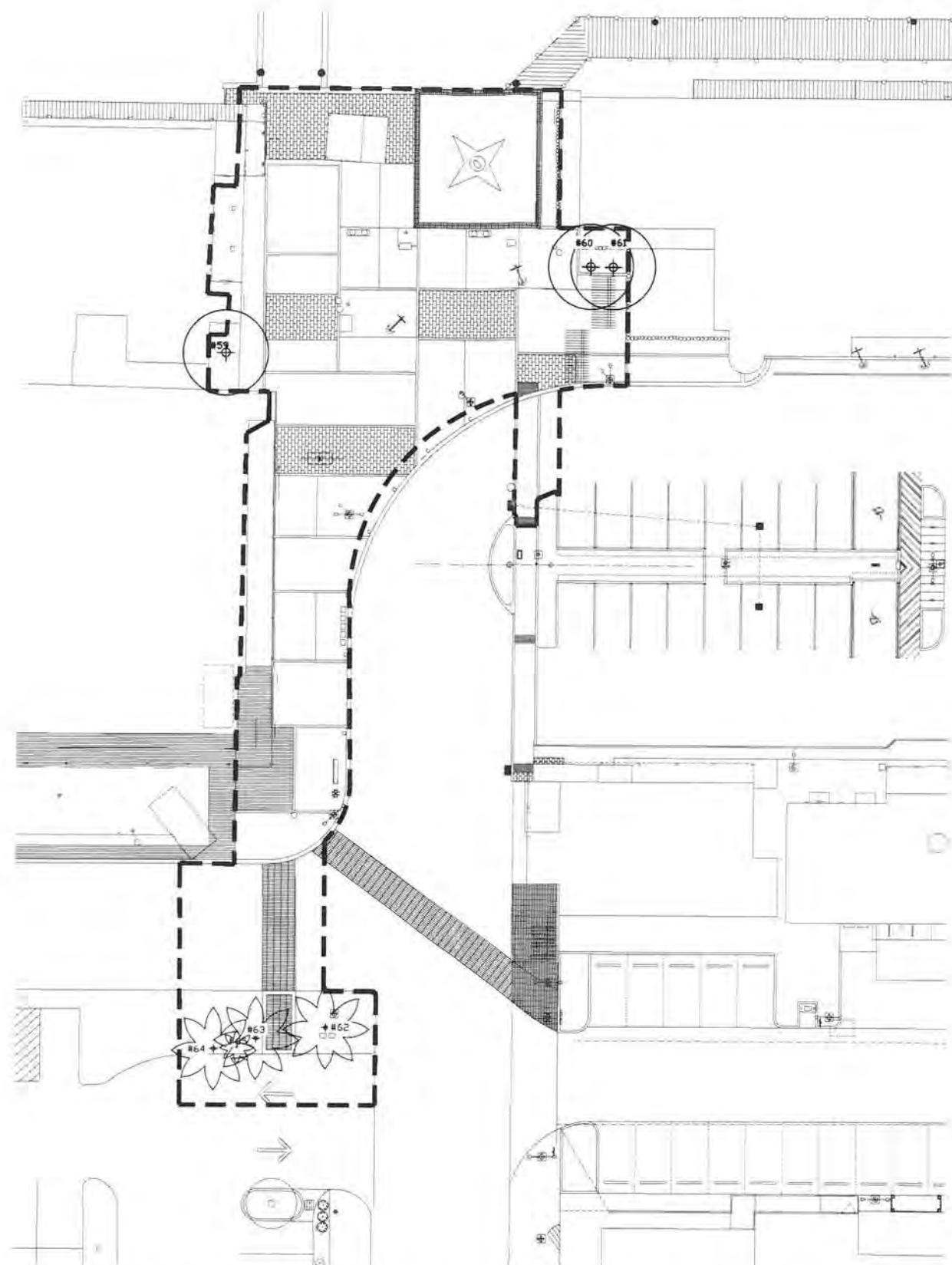


HISTORIC SEAPORT HARBORWALK - LANDSCAPE PLAN AREA #2 WILLIAM STREET PLAZA

SCALE: 1/16"=1'-0"

KEY WEST HISTORIC SEAPORT
PHASE II
KEY WEST, FLORIDA





NUMBER	BOTANICAL NAME	COMMON NAME	HEIGHT	SPREAD	CALIPER	CONDITION	STATUS
59	Bursera simarouba	Gumbo Limbo	20'-22'	15'-20'	18" (2)	Fair	Remain
60	Bursera simarouba	Gumbo Limbo	15'-20'	15'-20'	Multi	Fair	Remain
61	Bursera simarouba	Gumbo Limbo	15'-20'	15'-20'	Multi	Fair	Remain
62	Cocos nucifera	Coconut Palm	30'-35'	20'	8"-12"	Fair	Remain
63	Cocos nucifera	Coconut Palm	30'-35'	20'	8"-12"	Fair	Remain
64	Cocos nucifera	Coconut Palm	30'-35'	20'	8"-12"	Fair	Remain
65	Sabal palmetto	Sabal Palm	15'-20'	8'	12"	Fair	Remain

remove
transplant

Kamphur
5-1-18

LEGEND

EXISTING PALM

EXISTING TREE

PROJECT LIMIT LINE



HISTORIC SEAPORT HARBORWALK - EXISTING TREE DISPOSITION PLAN - AREA #3 MARGARET STREET PLAZA

SCALE: 1/16"=1'-0"

KEY WEST HISTORIC SEAPORT
PHASE II
KEY WEST, FLORIDA

WILLIAM P. HORN
ARCHITECT, P.A.

915 CATON ST
KEY WEST
FLORIDA
33040

TEL: (305) 296-5282
FAX: (305) 296-1033

LICENSE NO.
AA 000340

KEY WEST HISTORIC
SEAPORT
PHASE II

KEY WEST RIGHT
KEY WEST, FL 33040

ELIZABETH
NEWLAND

LANDSCAPE
ARCHITECTURE, LLC

3525 Ponce de Leon
Bldg., Suite 300
Orlando, Florida 32814
407-481-1501
enewland@earthlink.net

SEAL

THESE DRAWINGS MAY
NOT BE REPRODUCED
WITHOUT WRITTEN
AUTHORIZATION BY
WILLIAM P. HORN

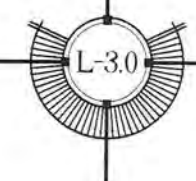
DATE

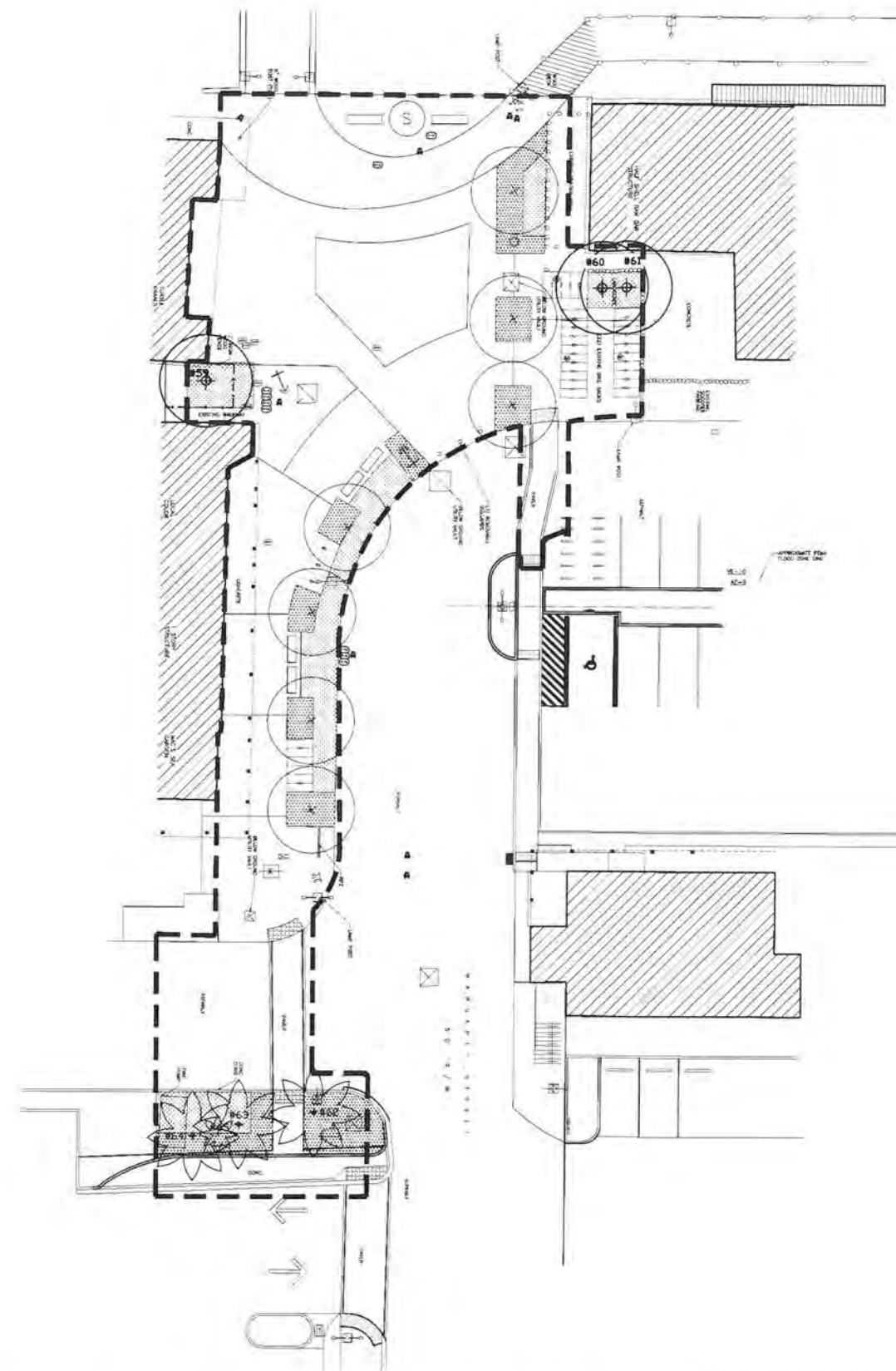
12-19-17 PHASE 2 REVISED
04-10-18 TREE COMMISSION

REVISIONS

DRAWN BY
JW

PROJECT
NUMBER
1609





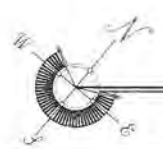
SYMBOL	KEY	QTY	L-3.1	SCIENTIFIC NAME	COMMON NAME	NATIVE	CALIPER	HEIGHT	CANOPY	CONTAINER	SPACING	CONDITION
	TREES											
	COO	7		Coccoloba diversifolia	Pigeon Plum	Yes	3'-4"	14'-18'	6'-10'	100 Gal	As Shown	5' CT
	PALMS											
	CON			Coconut nucifera 'Green Malayani'	Green Malayani Coconut	No	10'-12"	14'-18' CT	15'-20'	84B	As Shown	
	SHRUBS											
	THRL			Thunbergia asiatica	Thunberg Palm	Yes	4'-6"	6'-8' OA	6'-8'	84B	As Shown	Transplant From Site
	MEDIUM SHRUBS											
	BRL			Brysonima laevis	Locust Berry	Yes	NA	24'-36"	24'-36"	7 Gal	24" OC	
	PSL			Psychotria ligustrifolia	Dwarf Wild Coffee	Yes	NA	18'-24"	18'-24"	7 Gal	24" OC	
	SAB			Santia bahamensis	Maiden Bush	Yes	NA	18'-24"	18'-24"	7 Gal	24" OC	
	SER			Serenoa repens	Saw Palmetto	Yes	NA	36'-48"	36'-48"	15 Gal	24" OC	Silver
	GROUND COVER											
	BCA			Borreria hederacea	Sea On-Eye Daisy	Yes	NA	12'-18"	12'-18"	1 Gal	12" OC	
	ERL			Ernodea libralis	Golden Creeper	Yes	NA	12'-18"	12'-18"	1 Gal	12" OC	
	FIM			Ficus microcarpa 'Green Island'	Green Island Ficus	No	NA	12'-18"	12'-18"	3 Gal	12" OC	
	ME			Microsorum scolopendrium	Wart Fern	No	NA	12'-18"	12'-18"	1 Gal	12" OC	

LEGEND

EXISTING PALM

EXISTING TREE

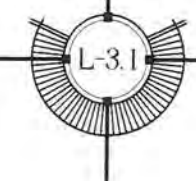
PROJECT LIMIT LINE



HISTORIC SEAPORT HARBORWALK - LANDSCAPE PLAN AREA #3 MARGARET STREET PLAZA

SCALE: 1/16" = 1'-0"

KEY WEST HISTORIC SEAPORT
PHASE II
KEY WEST, FLORIDA



WILLIAM P. HORN
ARCHITECT, P.A.

815 E. TON ST.
KEY WEST
FLORIDA
33640

TEL (305) 296-1303
FAX (305) 296-1033

LIENLSE & CO
P.A. 0003040

KEY WEST HISTORIC
SEAPORT
PHASE II

KEY WEST RIGHT
KEY WEST FL 33640

ELIZABETH
NEWLAND

LANDSCAPE
ARCHITECTURE, LLC

3525 Ronce de Leon
Blvd., Suite 500
Coral Gables, Florida 33134
(305) 441-0311
www.elizabethnewland.com

SEAL

THESE DRAWINGS MAY
NOT BE REPRODUCED
WITHOUT WRITTEN
AUTHORIZATION BY
WILLIAM P. HORN

DATE

12-19-17 PHASE 2 REVISED
04-10-18 TREE COMMISSION

REVISIONS

DRAWN BY
JW

PROJECT
NUMBER
1609