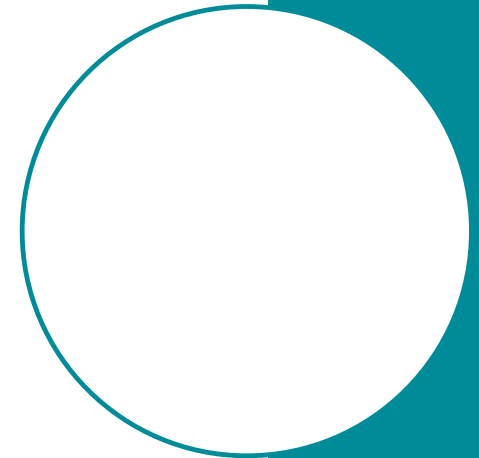


Health in All Policies (HiAP) Presentation on behalf of the *Choose Health: Partnership for A Healthier Florida Keys*

Bridget Kerner, National Association of County and City Health Officials

NACCHO Introduction

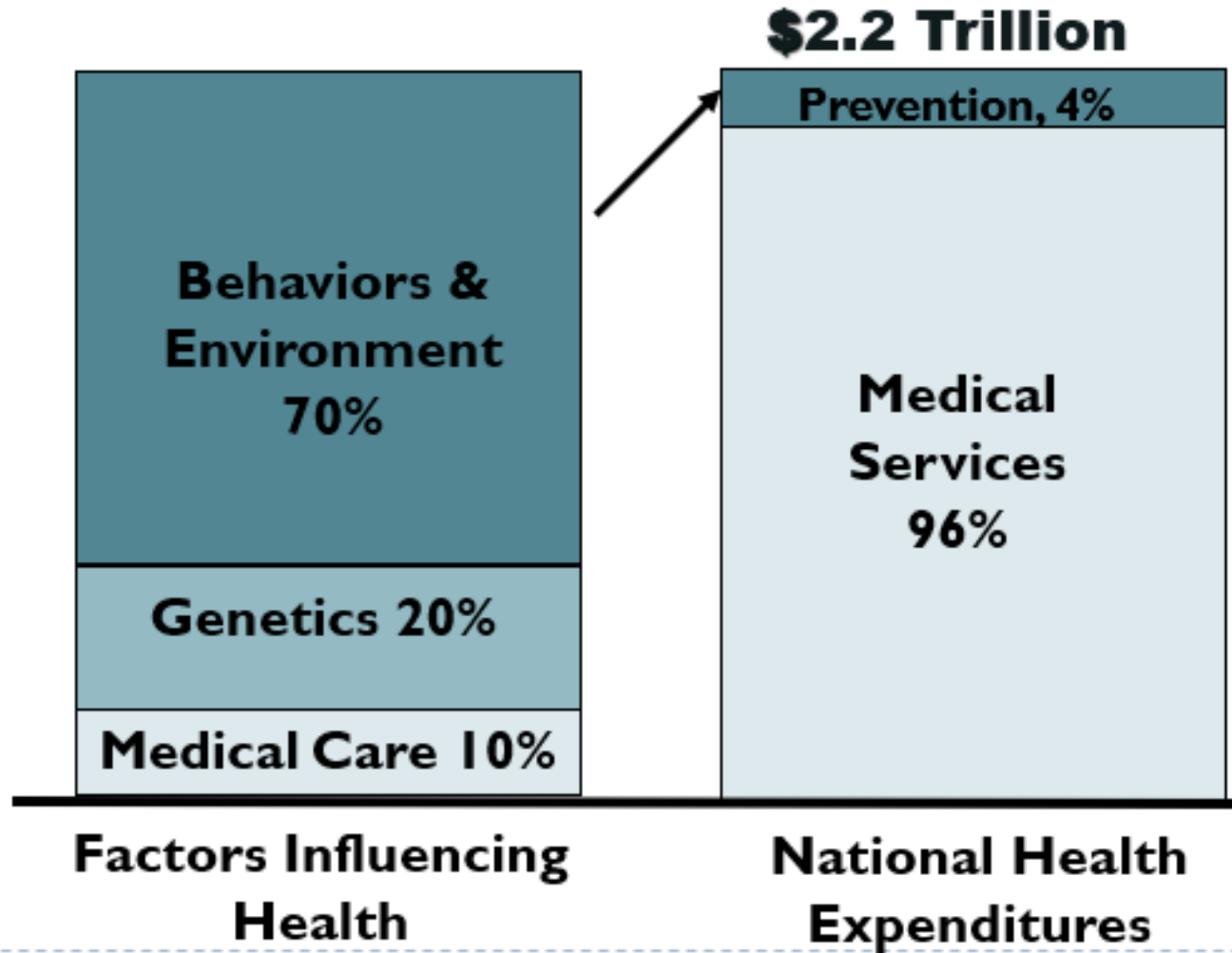
- The National Association of County and City Health Officials (NACCHO) is comprised of nearly **3,000 local health departments** across the United States. Our mission is to serve as a **leader, partner, catalyst**, and **voice** with local health departments.
- NACCHO's Values are leadership, excellence, health equity, participation, respect, integrity, science, and innovation.
- NACCHO advocates for LHDs on Capitol Hill; hosts informative conferences; develops timely tools, resources, and publications; disseminates evidence-based practices; provides essential technical assistance, funding, and training; and cultivates important partnerships to move local public health forward.



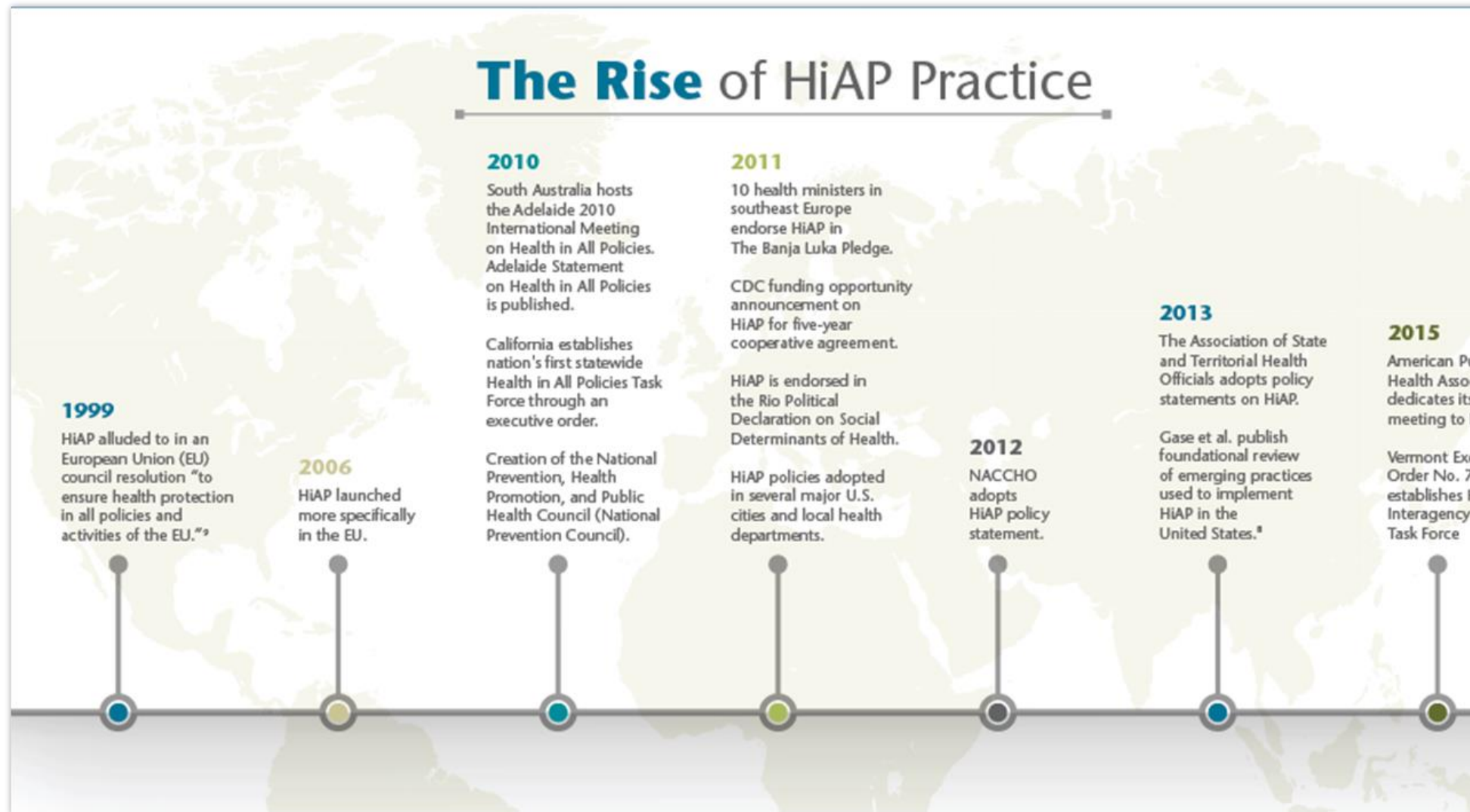
Definitions of HiAP

- NACCHO: HiAP is a change in the systems that determine how policy decisions are made and implemented by local, state, and federal government to ensure that policy decisions have beneficial or neutral impacts on the determinants of health.
- WHO: HiAP assists leaders and decision makers to integrate considerations of health, well-being and equity during the development, implementation, and evaluation of policies and services
- ASTHO: HiAP is a collaborative approach that integrates and articulates health considerations into policy making across sectors, and at all levels, to improve the health of all communities and people.

What factors determine our health?



HiAP Timeline





The how-to of HiAP

- ▶ **Objectives:**

- ▶ Safer environment with fewer risk factors
- ▶ Improved health equity
- ▶ Increased health and well-being

- ▶ **Multiple non-health sectors:** the sectors that shape social and physical determinants of health

- ▶ **Decision making processes:** development, implementation, and evaluation

The how-to of HiAP Continued

- ▶ **Health considerations in the decision making process** → How does a prospective-decision potentially impact population health?
- ▶ HiAP is **upstream** – the focus is on addressing potential health impacts early in the decision processes
- ▶ HiAP is **comprehensive** – all sectors, all stages of policy processes, all levels of government

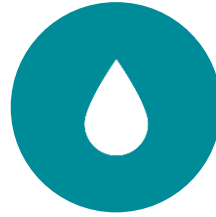
Why we need HiAP: Lead Poisoning Prevention



**HOUSING
DEPARTMENT,**



**HEALTH
DEPARTMENT,**



WATER UTILITY,



**EDUCATION
DEPARTMENT,**



PUBLIC WORKS,



**HUMAN
SERVICES,**

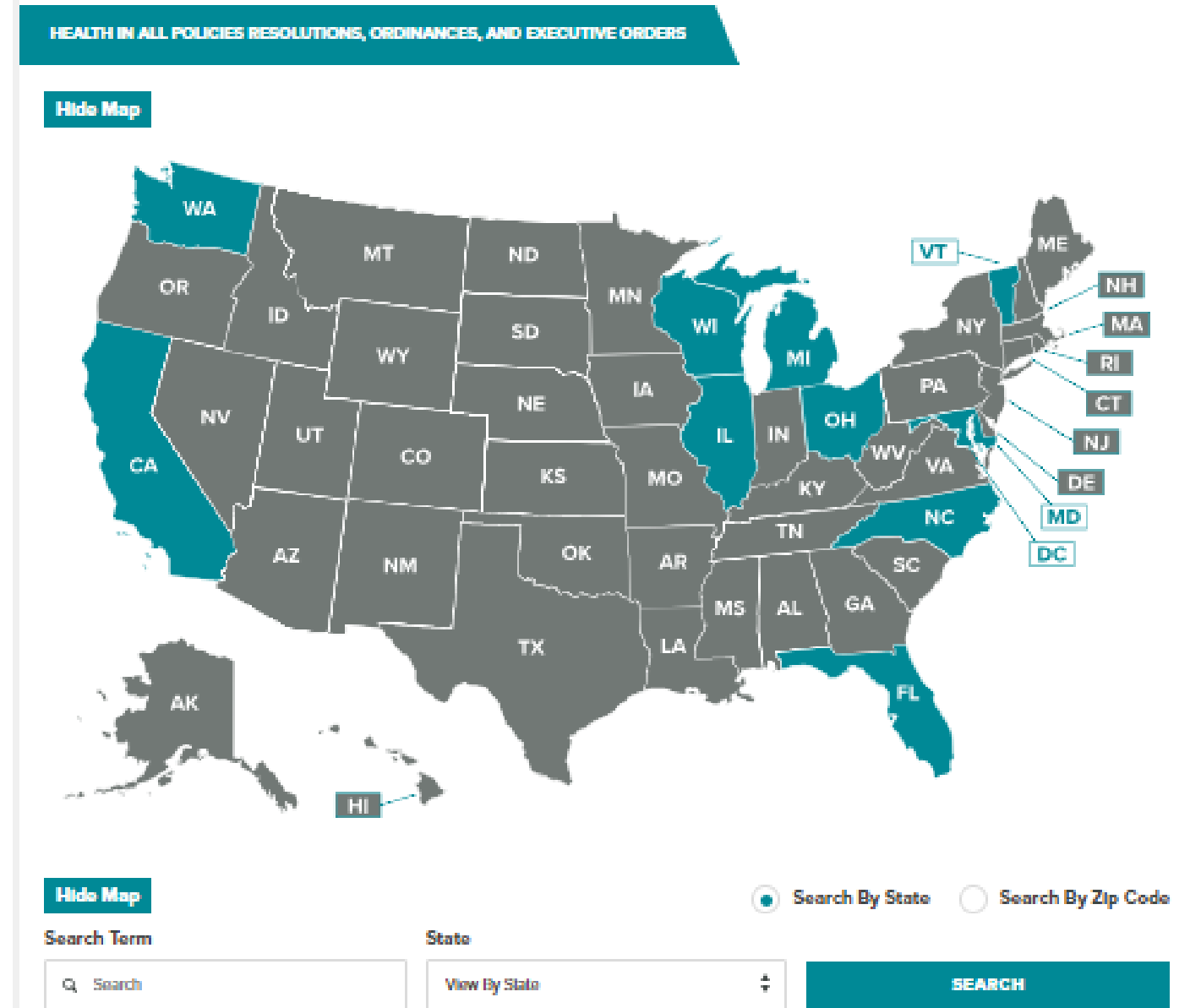


**DEPARTMENT OF
ENVIRONMENT**

Seven Strategies of HiAP

Develop and Structure	Develop and Structure Cross-Sector Relationships
Enhance	Enhance Workforce Capacity
Incorporate	Incorporate Health into Decision-making
Coordinate	Coordinate Funding and Investments
Integrate	Integrate Research, Data, and Evaluation Systems
Implement	Implement Accountability Structures
Synchronize	Synchronize Communications and Messaging

State and Local HiAP Initiatives with a Policy in Place



THE POLICY BRIEF

A newsletter issued by the Health in All Policies (HiAP) team in Pinellas County

IN THIS BRIEF:

Program Review.....	Pages 1 & 2
Partner Biography.....	Page 3
Community Perspective.....	Pages 4 & 5
Health Fact of the Month.....	Page 5
Literature Review.....	Page 6
Program Contacts.....	Page 6

PROGRAM REVIEW

St. Petersburg's HiAP Working Group Meeting

On June 19th, the City of St. Petersburg's HiAP working group held its quarterly meeting at the Leisure Complex. The working group meeting was facilitated by Cassidy Mutnansky, Health Planner for the City of St. Petersburg. The event was attended by St. Petersburg employees from various city departments. The working group discussed the progress of the HiAP plan and the upcoming annual report.



HiAP Example: Pinellas County, FL

THE POLICY BRIEF

A newsletter issued by the Health in All Policies (HiAP) team in Pinellas County

IN THIS BRIEF:

Program Review.....	Pages 1 & 2
Partner Biography.....	Page 3
Community Perspective.....	Page 4
Opportunities for Engagement.....	Page 5
Health Fact of the Month.....	Page 5
Literature Review.....	Page 6
Program Contacts.....	Page 6

PROGRAM REVIEW

St. Petersburg Workshop

On April 10th, the HiAP team hosted a jurisdictional HiAP workshop for the City of St. Petersburg. Opening remarks were delivered by Dr. Kanika Tomalin, the city's administrator and deputy mayor, and Kim Lehto, the Healthy St. Petersburg coordinator. The workshop was facilitated by Dr. Sandra Whitehead, a nationally recognized HiAP expert, and Cassidy Mutnansky, the city's health planner. In attendance were 49 elected officials and city staff representing 24 city departments.

Pinellas Park Workshop

Health Impact Assessment (HIA)

A systematic evaluation of the health and equity impacts of a proposed policy, plan, project, or program. It involves a rigorous and evidence-based process that includes stakeholder engagement and participatory decision-making to inform recommendations.

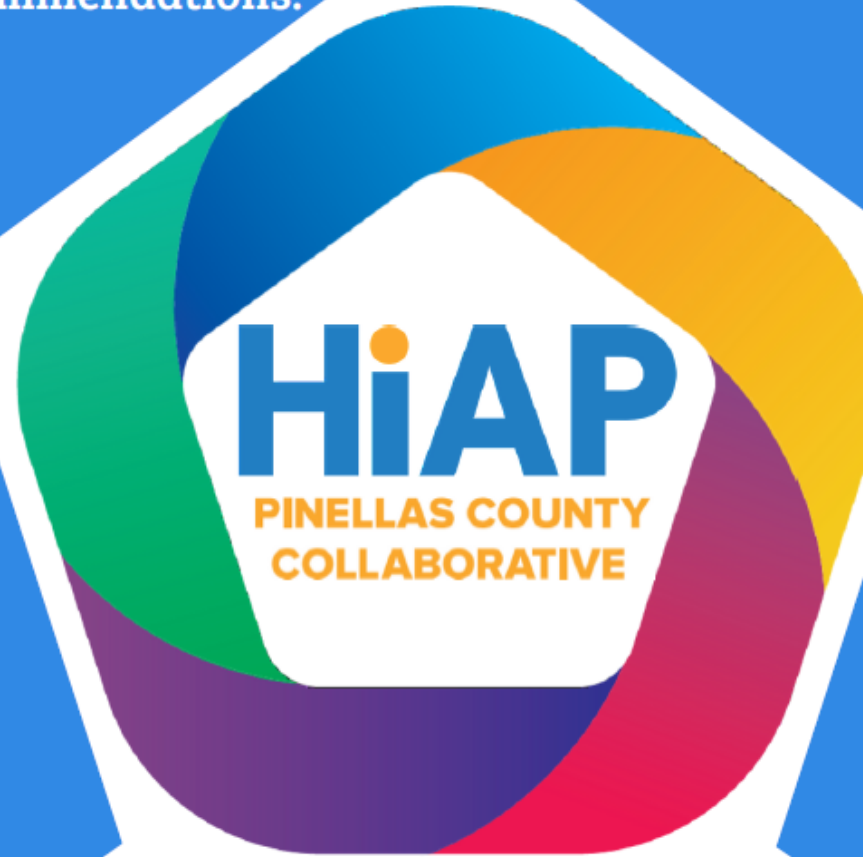
Pinellas
County:
Decision
Support Tool

Health Planning Matrix

A tailored tool designed to guide decision-makers, inform collaborative feedback, and provide quick evidence-based recommendations to improve equitable health outcomes for a proposed project, plan, policy, or program.

Health Note

A timely summarization detailing the health and equity impacts of a drafted policy, plan, project, or program utilizing expedited literature reviews and available data to provide evidence-based recommendations for decision-makers.



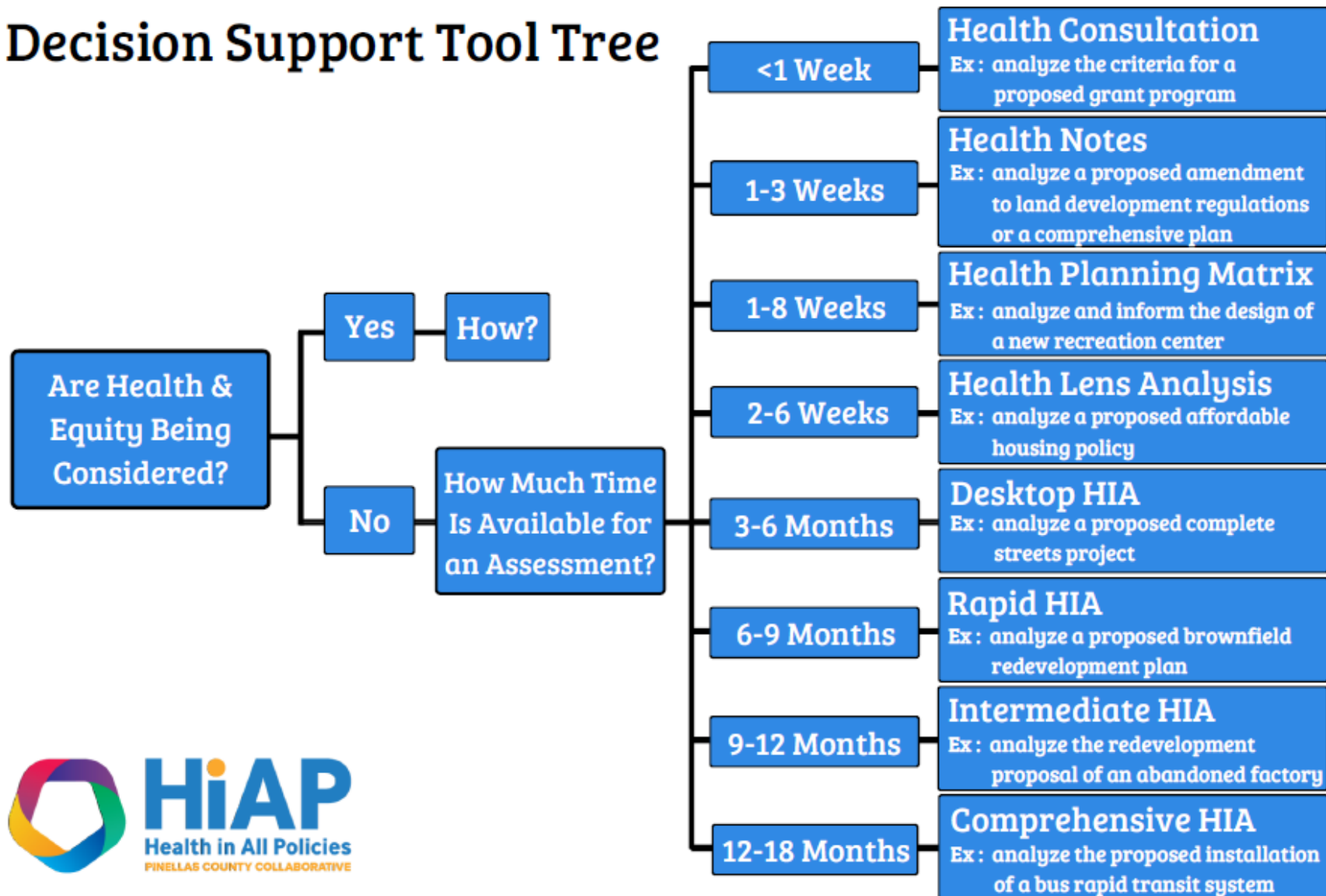
Health Lens Analysis

An evidence-based, qualitative assessment of a proposed policy, plan, project, or program utilizing eight structured questions to address health and equity concerns for differentiated populations with recommendations for improvement.

Health Consultation

A quick analysis and concise recommendation

Decision Support Tool Tree



Action Steps



Celebrate Success: Build on the employee wellness initiatives



Attend *Choose Health: Partnership for a Healthier Florida Keys* meetings on December 10th at 10:00am right here



Include the private sector in HiAP discussions

Contact Information



Bridget Kerner

Phone: 202-507-4230

Email: bkerner@naccho.org.

Alison Kerr

Phone: 305-619-8087

Email: Alison.Kerr@flhealth.gov

References and Resources

- NACCHO Factsheet: Local Health Department Strategies for Implementing Health in All Policies
- NACCHO Report: Health in All Policies: Experiences from Local Health Departments
- ASTHO Report: State of Health in All Policies
- Public Health Institute: Health in All Policies: A Guide for State and Local Governments
- Florida Department of Health at Pinellas County: Policy Brief: Health in All Policies