

# STAFF REPORT

DATE: June 3, 2021

RE: 100 Grinnell Street  
(permit application # T2021-0156 and T2021-0157)

FROM: Karen DeMaria, City of Key West Urban Forestry Manager

An application was received requesting the removal of (2) Spanish Stopper, (2) Blolly, and (1) Jamaican Caper trees and (6) Sabal Palms and (1) Royal Palm. The removals are requested as part of a plan to update and improve the existing landscaping of the parking area. A site inspection was done and documented the following:

Tree Species: Blolly (Guapira discolor)



Tree #2

Tree #1

Photo showing location of trees  
along Grinnell Street.



Tree #1



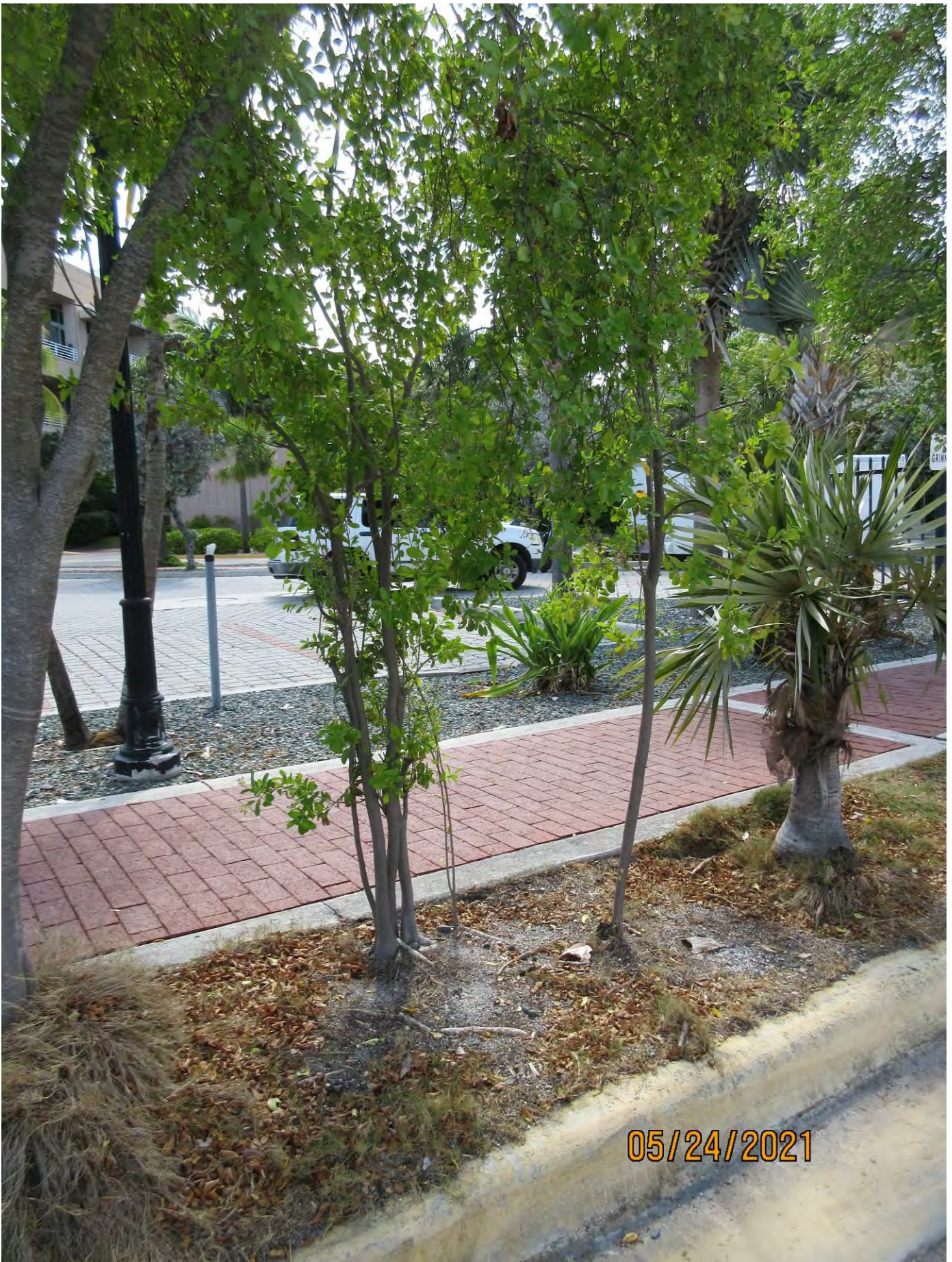
Tree #2

Tree #2



Tree #1





Tree #2

Tree #1



Tree #1-Diameter: 1.5"

Location: 80% (growing in center of sidewalk planter from root system of mother tree, very visible)

Species: 100% (on protected tree list)

Condition: 70% (overall condition is good to fair. Young, single trunked tree.)

Total Average Value = 83%

Value x Diameter = 1.2 replacement caliper inches

Tree #2-Diameter: 2.5" (multi trunked)

Location: 70% (growing in sidewalk planter closer to edge, under canopy of mother tree, growing from root system of mother tree, very visible.)

Species: 100% (on protected tree list)

Condition: 60% (overall condition is fair, multi trunked young tree, as tree grows there will be competition with trunks creating included bark. Visible girdled root across surface)

Total Average Value = 76%

Value x Diameter = 1.9 replacement caliper inches

Tree Species: Spanish Stopper (*Eugenia foetida*)



Photo showing location of trees along Trumbo Road sidewalk area.





Standing on sidewalk, photo showing tree #7, view 1.





Standing on sidewalk, photo showing tree #7, view 2.





Close up photo of tree #7 showing trunk damage.





Photo of base of tree #7.

Tree #7-Diameter: 3.8"

Location: 80% (growing in sidewalk/parking planter, very visible tree.)

Species: 100% (on protected tree list)

Condition: 50% (overall condition is fair to poor. Tree heavily damaged during Hurricane Irma but is recovering, growth lean toward sidewalk)

Total Average Value = 76%

Value x Diameter = 2.8 replacement caliper inches





Standing on sidewalk, photo showing tree #8, view 1.





Standing on sidewalk, photo showing tree #8, view 2.





Photo showing base of tree and trunk structure.





Photo showing base of tree and trunk damage.

Tree #8-Diameter: 4.4"

Location: 80% (growing in sidewalk/parking planter. Very visible area.)

Species: 100% (on protected tree list)

Condition: 50% (overall condition is fair to poor, tree heavily damaged by Hurricane Irma but us trying to recover.)

Total Average Value = 76%

Value x Diameter = 3.3 replacement caliper inches



Tree Species: Jamaican Caper (*Capparis cynophallophora*)



View of tree #5 from parking lot.





Photo of whole tree showing location.





Closer view of whole tree.





Close up view of trunk damage.





Photo showing base of tree and trunk.





Photo of tree canopy.

Diameter: 4.7"

Location: 70% (growing in sidewalk/parking planter, very visible tree.)

Species: 100% (on protected tree list)

Condition: 50% (overall condition is fair to poor, tree has growth lean toward sidewalk, trunk damage from Hurricane Irma)

Total Average Value = 73%

Value x Diameter = 3.4 replacement caliper inches

Total Required Replacements = 12.6" (if all tree approved for removal) and 7-approved native palms, 4 ft tall minimum each palm.



## Sabal Palms to be Removed:

#11



#12





#13



#14





#16



#17





Royal Palm #15



Existing Landscaping



Standing on  
Trumbo Road  
looking at site,  
view 1.





Standing on  
Trumbo Road  
looking at  
site, view 2.



Standing on  
Trumbo Road  
looking at site,  
view 3.





Standing on  
Trumbo Road  
looking at site,  
view 4.



Standing on  
Trumbo Road  
looking at site,  
view 5.





Standing at intersection of Grinnell and Caroline looking at site.



Standing on Grinnell Street looking at site, view 1.





Standing on  
Grinnell  
Street looking  
at site, view 2.



Standing on  
Grinnell Street  
looking at site,  
view 3.





Standing on  
Grinnell Street  
looking at site,  
view 4.



Standing on  
Grinnell Street  
looking at site,  
view 5.





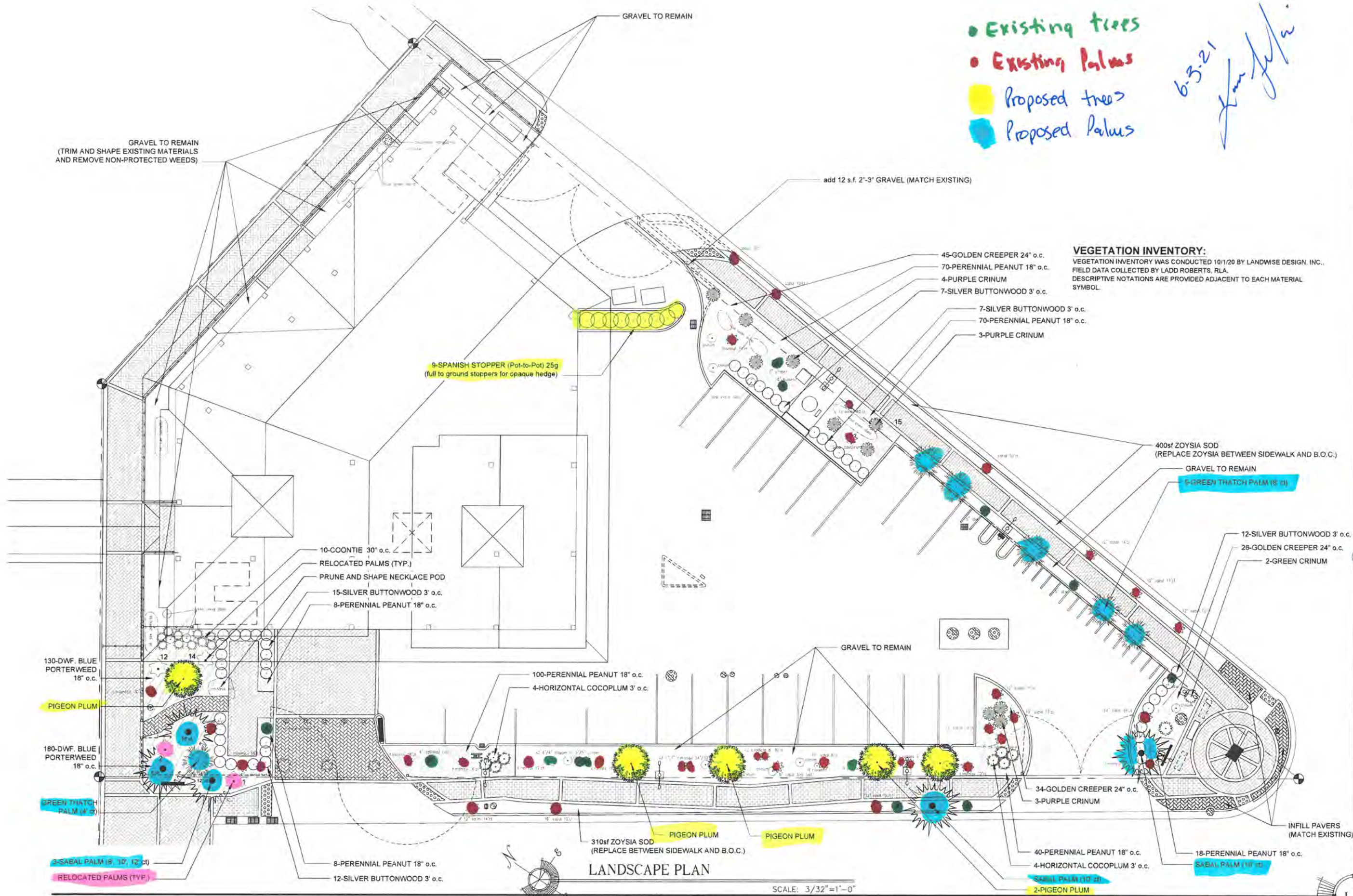
Standing on Grinnell Street looking at site, view 6.

### Proposed Updated Landscape Plan Comments:

The tree removal permits on this site require the planting of 12.6 caliper inches of approved trees and 7 approved native palms, each palm a minimum of 4 ft tall. The project also requests to transplant (2) thatch palms (tree #9 and #10) to another area on the property. There is also an existing, open permit on the property, T2020-0146, that requires the planting of 1-8ft tall approved tree, minimum 1-inch diameter on the site.

The updates to the existing landscaping include the planting of (5) Pigeon Plum trees, (9) Spanish Stopper trees, (6) Thatch Palms, and (5) Sabal Palms. This proposed planting will meet the requirements of the tree and palm removal permits. Additional shrubs and groundcover are proposed to be planted at the corner of Grinnell/Caroline/Trumbo Road, at the parking lot entrance, at the ferry pedestrian entrance, and for buffering of equipment.





Existing trees  
 Existing Palms  
 Proposed trees  
 Proposed Palms

6-3-21  
*[Signature]*

**VEGETATION INVENTORY:**  
 VEGETATION INVENTORY WAS CONDUCTED 10/1/20 BY LANDWISE DESIGN, INC.,  
 FIELD DATA COLLECTED BY LADD ROBERTS, RLA.  
 DESCRIPTIVE NOTATIONS ARE PROVIDED ADJACENT TO EACH MATERIAL SYMBOL.

WILLIAM P. HORN  
 ARCHITECT, P.A.

915 EATON ST.  
 KEY WEST  
 FLORIDA  
 33040

TEL 305/ 296-8302  
 FAX 305/ 296-1033

LICENSE NO  
 AA 0003040

KEY WEST BIGHT  
 FERRY TERMINAL  
 100 Grinnell Street  
 KEY WEST, FLORIDA



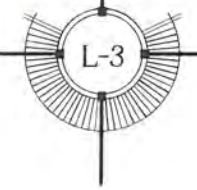
THESE DRAWINGS MAY  
 NOT BE REPRODUCED  
 WITHOUT WRITTEN  
 AUTHORIZATION BY  
 WILLIAM P. HORN

DATE  
 11-03-20 HARC SUBMITTAL  
 04-06-21 TREE COMM.  
 06-02-21 TREE COMM.

REVISIONS

DRAWN BY  
 JW

PROJECT  
 NUMBER  
 2014



KEY WEST BIGHT FERRY TERMINAL  
 100 Grinnell Street  
 KEY WEST, FLORIDA