

**Previous Approved Plans
September 22, 2009**

CITY OF KEY WEST

ADMINISTRATION BUILDING COMPLEX



Drawing Index

- A0.1.1 - Cover
- A1.1.1 - Architectural Site Plan
- A2.1.1 - 1st Floor Plan Admin Bldg
- A2.1.2 - 2nd Floor Plan Admin Bldg
- A2.1.3 - 1st Floor Plan Parking Garage
- A2.1.5 - 3rd Floor Plan Parking Garage
- A2.3.1 - Admin Bldg Roof Plan
- A3.1.1 - Overall Elevations
- A3.1.2 - Admin Bldg Elevations
- A3.1.3 - Admin Bldg Elevations
- A3.1.4 - Parking Garage Elevations

525 ANGELA STREET, KEY WEST, FLORIDA 33040

HARC SUBMISSION
AUGUST 14, 2009

mbi | k2m
ARCHITECTURE, INC.

1001 Whitehead Street
Key West, Florida 33040
Tel: 305.292.7722
Fax: 305.292.2162
Email: info@mbi-k2m.com
URL: www.mbi-k2m.com
Mr. Michael B. Ingram

SUBMISSIONS

2009.08.14 HARC Submission

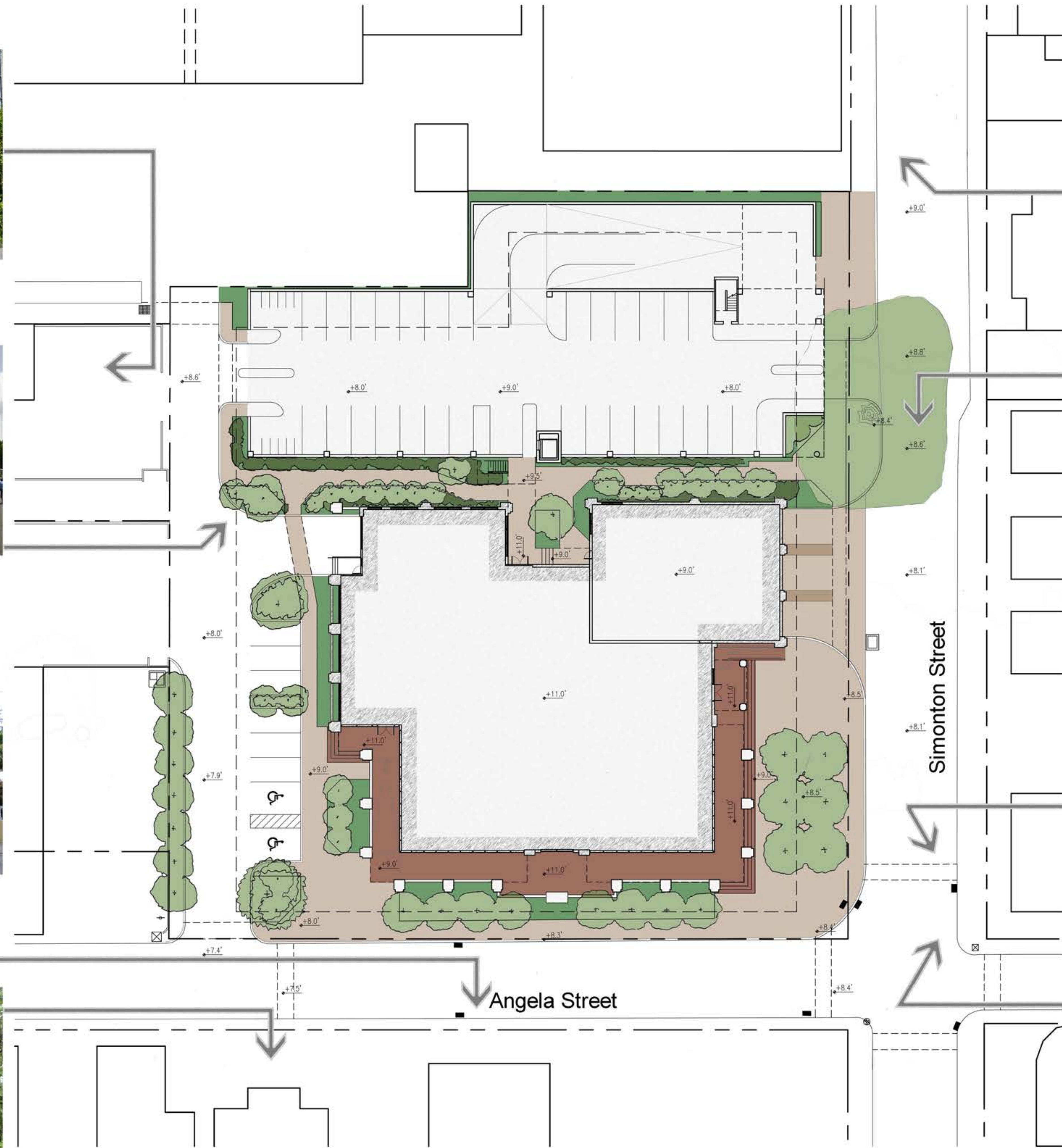
KEY WEST ADMINISTRATION
BUILDING COMPLEX

Project No. MK-08021	Phase: Schematic Design
-------------------------	----------------------------

COVER SHEET

A0.1.1

DATE: August 14, 2009



0 20 40 60
GRAPHIC SCALE: 1" = 20'-0"

01 ARCHITECTURAL SITE PLAN
SCALE: 1"=20'-0"

ARCHITECT:
mbi | k2m
ARCHITECTURE, INC.
Architecture, Interior Design,
Procurement,
Owner Representation,
Specialty Consulting
1001 Whitehead St., Unit 101
Key West, Florida 33040
Tel: 305-292-7722
Fax: 305-292-2162
Email: info@mbi-k2m.com
URL: www.mbi-k2m.com

Seal:
Consultants:
STRUCTURAL ENGINEER:
TKW Engineers
CIVIL ENGINEER:
Perez Engineering
MEP / FF ENGINEER:
TLC Engineering
PLANNER:
The Craig Co.
LANDSCAPE ARCHITECT:
Elizabeth Newland
Revisions:

KEY WEST ADMINISTRATION
BUILDING COMPLEX
575 ANGELA STREET
KEY WEST, FL 33040

NOTED: 8/17/2009 8:31 AM
Drawing Size: 24x36 Project #: MK-08021D
Drawn By: ADS Checked By: MBI
Title: ARCHITECTURAL SITE PLAN
Sheet Number: A1.1.1
Date: - AUGUST 14, 2009
©2009 by mbi | k2m Architecture, Inc.



\\101.168.222.222\Users\jacob\2009\mk-08021 City of Key West\Bldg\Drawings\Arch\A1.1_34x36.dwg, 8/17/2009 8:31 AM, scale: 1"=20'-0", author: jacob

Seal:

Consultants:

STRUCTURAL ENGINEER:
TKW Engineers

CIVIL ENGINEER:
Perez Engineering

MEP / FP ENGINEER:
TLC Engineering

PLANNER:
The Craig Co.

LANDSCAPE ARCHITECT:
Elizabeth Newland

Revisions:

KEY WEST ADMINISTRATION
BUILDING COMPLEX
575 ANGELA STREET
KEY WEST, FL 33040

NOTED: 8/18/2009 8:38 AM

Drawing Size 24x36	Project #: MK-08021D
Drawn By: WBS	Checked By: MBI

Title:
FIRST FLOOR PLAN

Sheet Number:

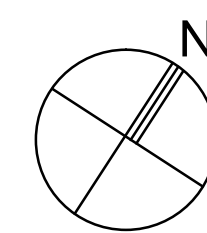
A2.1.1

Date: - AUGUST 14, 2009

1 000/01 01 000/01 01 000/01 01 000/01



1 FIRST FLOOR PLAN
A2.1.1 SCALE: 1/8"=1'-0"



\\fs1.168.222\shared\VC04-Shawn\Jobs\2008\MK-08021 City of KW Admin Bldg\Drawings\Arch\A21_1_A2.1.dwg, 8/17/2009 8:38 AM, scale: 1/8" = 1'-0", author: wms

Seal:

Consultants:

STRUCTURAL ENGINEER:
TKW Engineers

CIVIL ENGINEER:
Perez Engineering

MEP / FP ENGINEER:
TLC Engineering

PLANNER:
The Craig Co.

LANDSCAPE ARCHITECT:
Elizabeth Newland

Revisions:

**KEY WEST ADMINISTRATION
BUILDING COMPLEX**
575 ANGELA STREET
KEY WEST, FL 33040

NOTED: 8/18/2009 8:39 AM

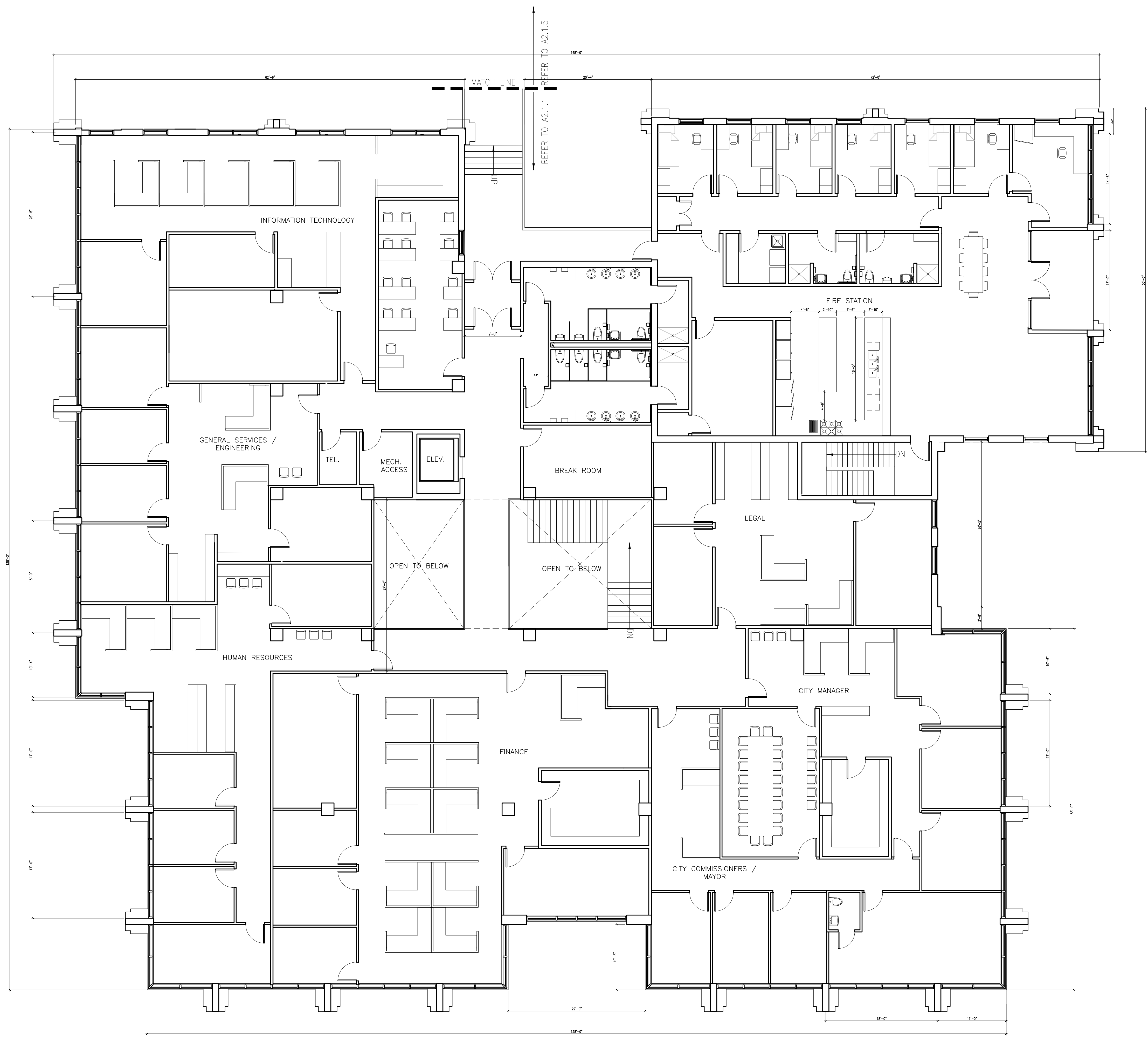
Drawing Size 24x36	Project #: MK-08021D
Drawn By: WBS	Checked By: MBI

Title:
SECOND FLOOR PLAN

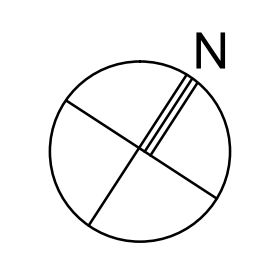
Sheet Number:

A2.1.2

Date: - AUGUST 14, 2009
1 000/0 A 000/0 000/0 000/0



1
A2.1.2 **SECOND FLOOR PLAN**
SCALE: 1/8"=1'-0"



\\Fs11682222\johant\2009\08021 City of Key Admin Bldg\Drawings\Arch\A2.1.2_A2.1.2.dwg, 8/19/2009 8:39 AM, scale: 1/8"=1'-0", author: wbs

Seal:

Consultants:

STRUCTURAL ENGINEER:
TKW Engineers

CIVIL ENGINEER:
Perez Engineering

MEP / FP ENGINEER:
TLC Engineering

PLANNER:
The Craig Co.

LANDSCAPE ARCHITECT:
Elizabeth Newland

Revisions:

**KEY WEST ADMINISTRATION
BUILDING COMPLEX**

575 ANGELA STREET
KEY WEST, FL 33040

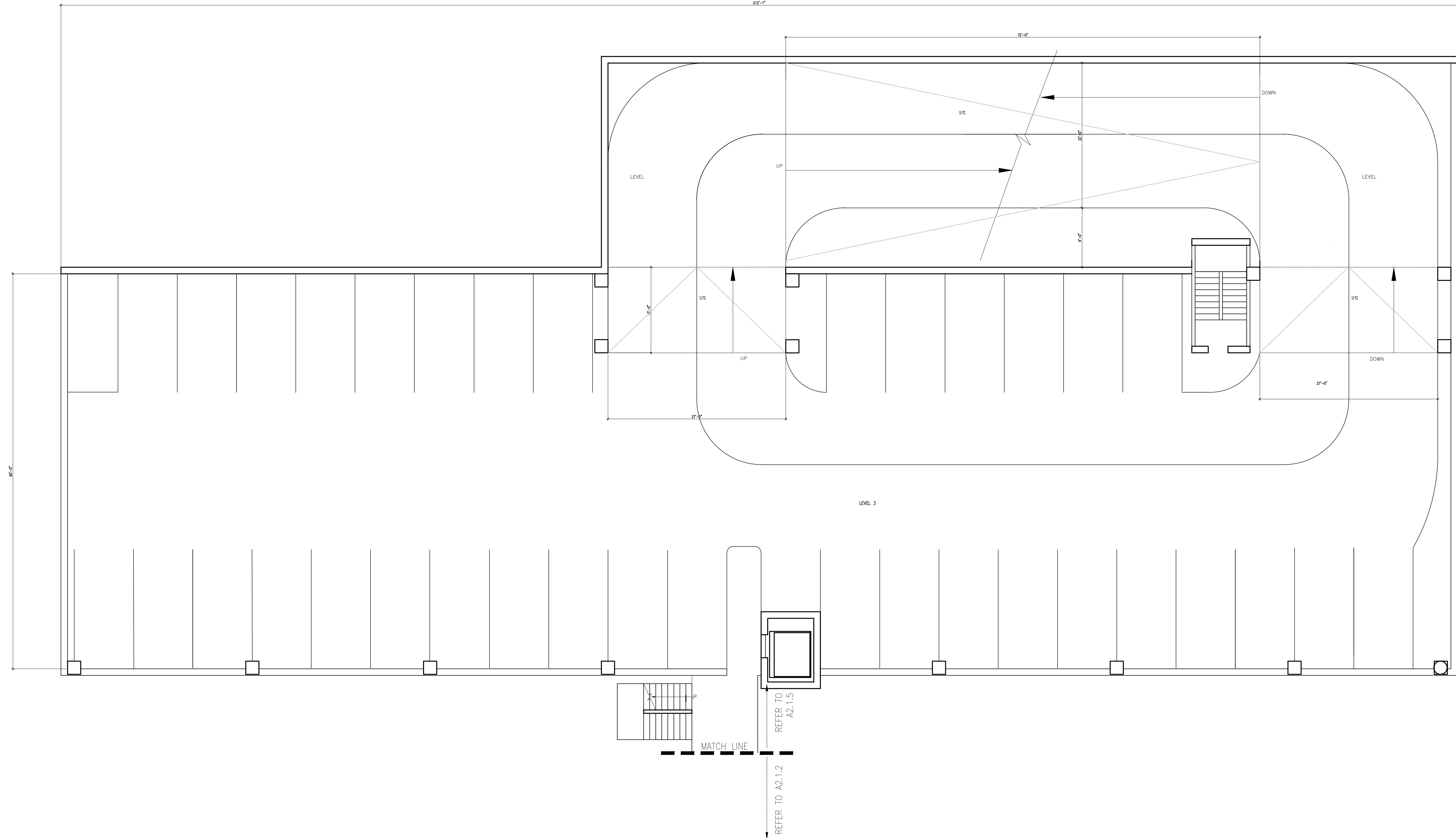
NOTED: 8/18/2009 9:48 AM

Drawing Size 24x36	Project #: MK-08021D
Drawn By: WBS	Checked By: MBI

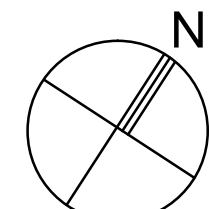
Title:
**PARKING GARAGE
THIRD LEVEL PLAN**

Sheet Number:
A2.1.5

Date: - AUGUST 14, 2009



1
A2.1.5
THIRD LEVEL PLAN
SCALE: 1/8"=1'-0"



ARCHITECT:

mbi | k2m
ARCHITECTURE, INC.

Architecture, Interior Design,
 Procurement,
 Owner Representation,
 Specialty Consulting

1001 Whitehead St., Unit 101
 Key West, Florida 33040
 Tel: 305-292-7722
 Fax: 305-292-2162
 Email: info@mbi-k2m.com
 URL: www.mbi-k2m.com

Seal:

Consultants:

STRUCTURAL ENGINEER:
 TKW Engineers

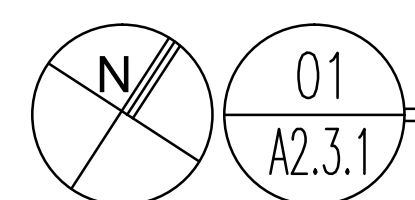
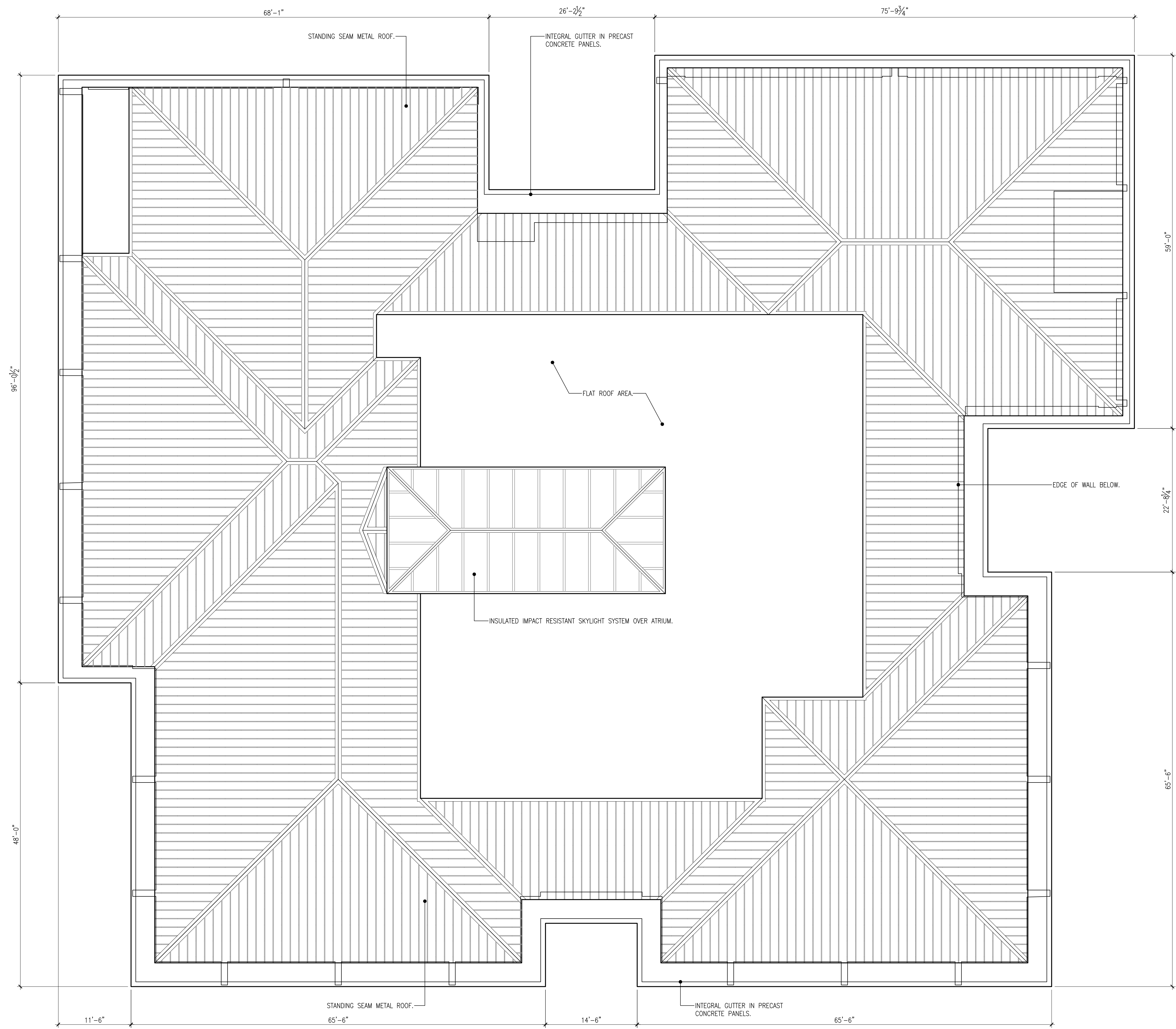
CIVIL ENGINEER:
 Perez Engineering

MEP / FP ENGINEER:
 TLC Engineering

PLANNER:
 The Craig Co.

LANDSCAPE ARCHITECT:
 Elizabeth Newland

Revisions:



ADMINISTRATION BUILDING ROOF PLAN

SCALE: 1/8"=1'-0"

NOTED: 8/18/2009 8:37 AM

Drawing Size 24x36	Project #: MK-08021D
Drawn By: ADS	Checked By: MBI

Title:

**ADMINISTRATION
 BUILDING
 ROOF
 PLAN**

Sheet Number:

A2.3.1

Date: - AUGUST 14, 2009

1 0

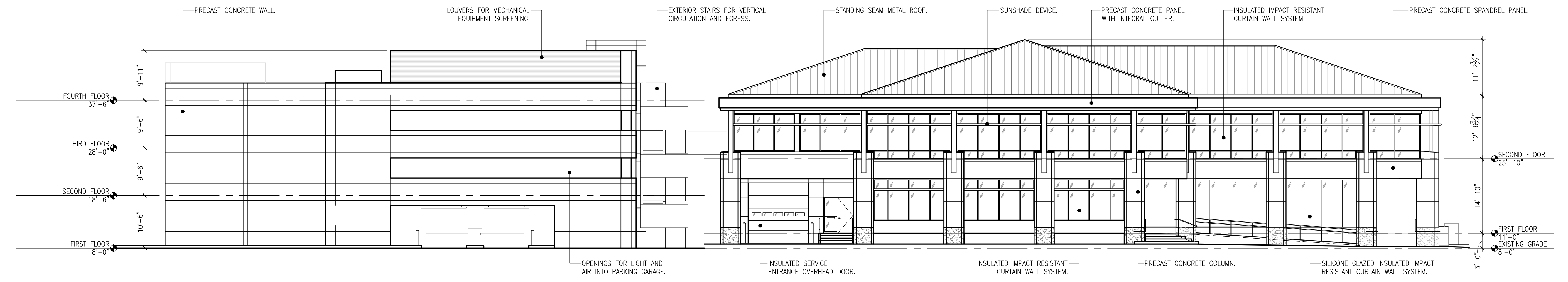
\\192.168.222.222\john\john\Share\Arch\2009\MK-08021\City of KW Admin Bldg\Drawings\Arch\A2.3.1\A2.3.1.dwg, 8/19/2009 8:37 AM, scale: 1'-0" = 1'-0", author: john

ARCHITECT:

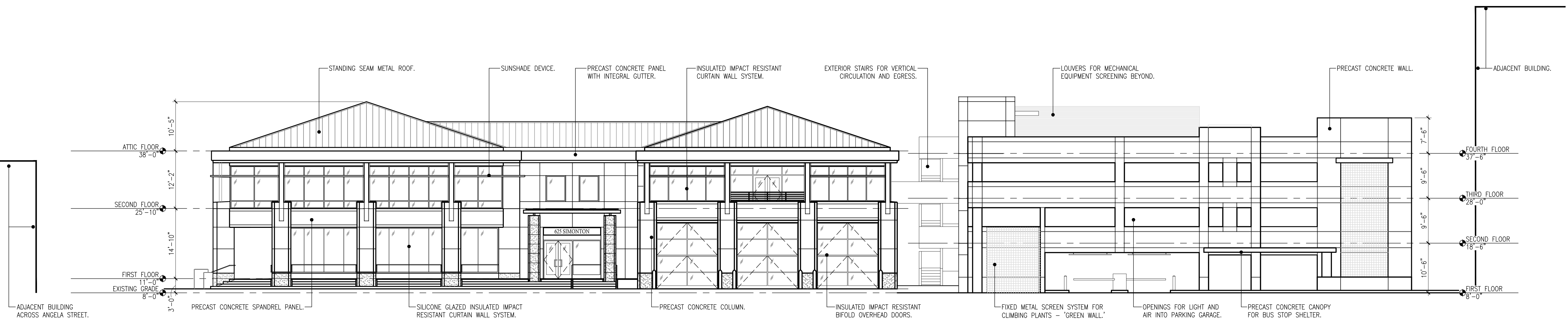
mbi | k2m
ARCHITECTURE, INC.

Architecture, Interior Design,
Procurement,
Owner Representation,
Specialty Consulting

1001 Whitehead St., Unit 101
Key West, Florida 33040
Tel: 305-292-7722
Fax: 305-292-2162
Email: info@mbi-k2m.com
URL: www.mbi-k2m.com



02 WEST ELEVATION - OVERALL
A3.1.1 SCALE: 3/32"=1'-0"



01 EAST ELEVATION - OVERALL
A3.1.1 SCALE: 3/32"=1'-0"

Seal:

Consultants:

- STRUCTURAL ENGINEER:
TKW Engineers
- CIVIL ENGINEER:
Perez Engineering
- MEP / FP ENGINEER:
TLC Engineering
- PLANNER:
The Craig Co.
- LANDSCAPE ARCHITECT:
Elizabeth Newland

Revisions:

KEY WEST ADMINISTRATION
 BUILDING COMPLEX
 575 ANGELA STREET
 KEY WEST, FL 33040

DATE: 8/18/2009 8:24 AM

Drawing Size 24x36	Project #: MK-08021D
Drawn By: ADS	Checked By: MBI

OVERALL EXTERIOR ELEVATIONS

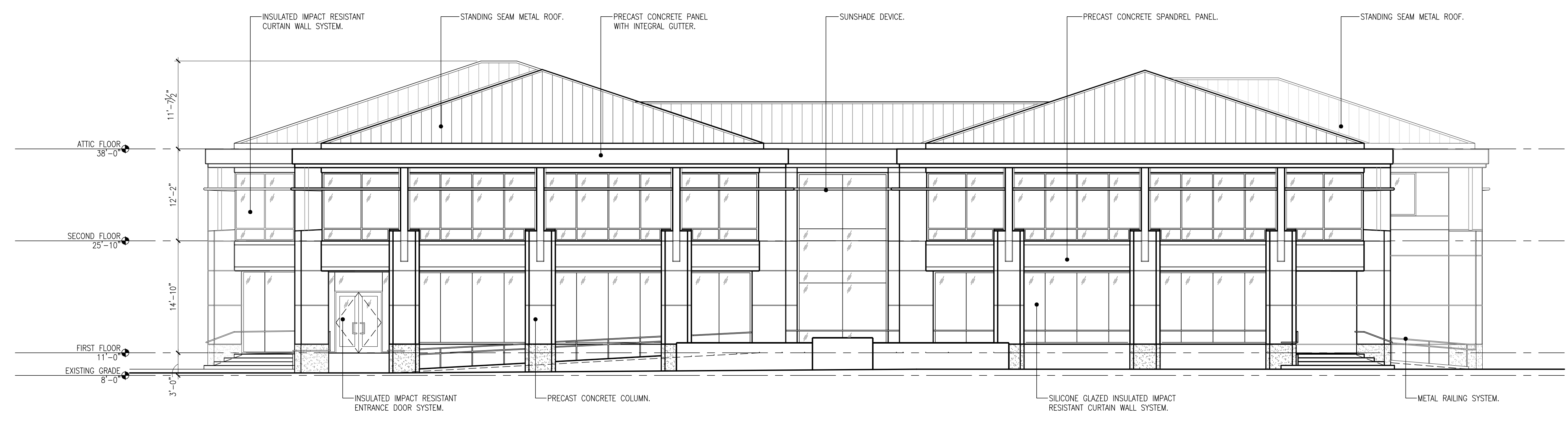
Sheet Number:

A3.1.1

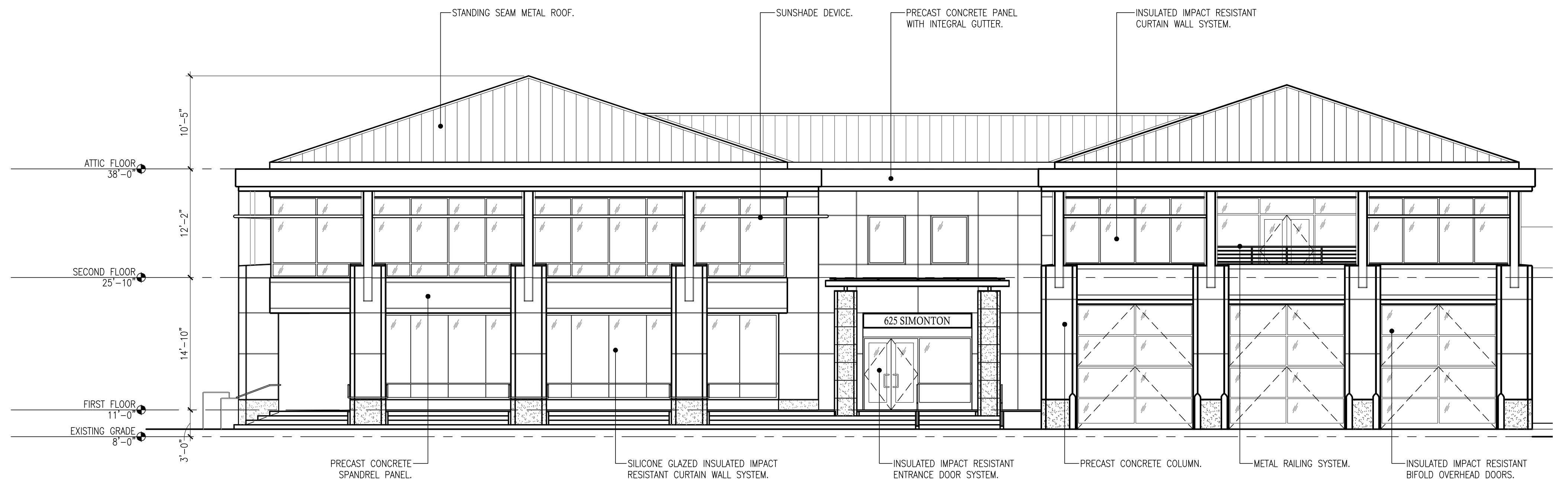
Date: - AUGUST 14, 2009

i ce/j/a A a/a/g a/a/a/a/a

\\192.168.222.222\Users\shawn\A\Arch\A3.1.1_24x36.dwg, 8/18/2009 8:24 AM, locale: 1'-0" = 1'-0", author: shawn



02 SOUTH ELEVATION - ADMINISTRATION BUILDING
SCALE: 1/8"=1'-0"



01 EAST ELEVATION - ADMINISTRATION BUILDING
SCALE: 1/8"=1'-0"

Seal:

Consultants:

- STRUCTURAL ENGINEER:
TKW Engineers
- CIVIL ENGINEER:
Perez Engineering
- MEP/FP ENGINEER:
TLC Engineering
- PLANNER:
The Craig Co.
- LANDSCAPE ARCHITECT:
Elizabeth Newland

Revisions:

KEY WEST ADMINISTRATION BUILDING COMPLEX
 525 ANGELA STREET
 KEY WEST, FL 33040

NOTED: 8/18/2009 8:31 AM

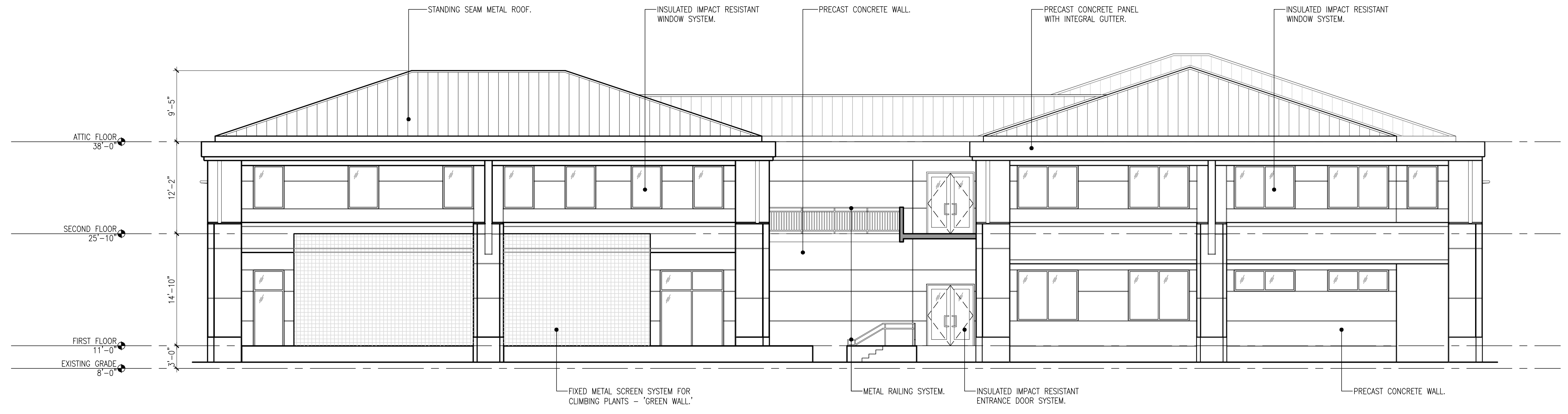
Drawing Size 24x36	Project #: MK-08021D
Drawn By: ADS	Checked By: MBI

Title:
EXTERIOR ELEVATIONS ADMINISTRATION BUILDING

Sheet Number:

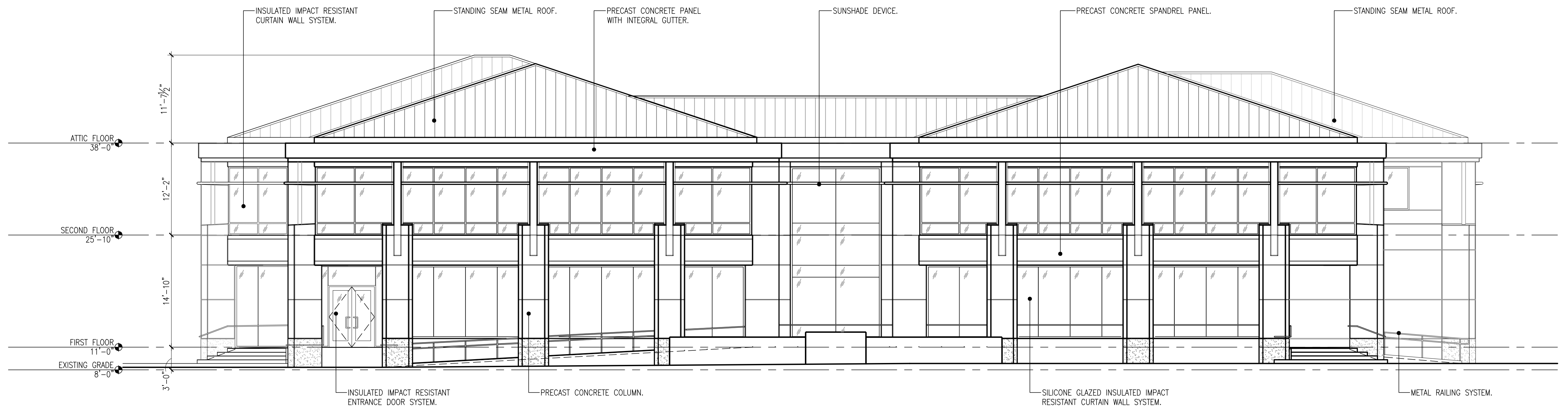
A3.1.2

Date: - AUGUST 14, 2009



0 8 16 24
 GRAPHIC SCALE: 1/8" = 1'-0"

02 NORTH ELEVATION - ADMINISTRATION BUILDING
 SCALE: 1/8"=1'-0"



0 8 16 24
 GRAPHIC SCALE: 1/8" = 1'-0"

01 WEST ELEVATION - ADMINISTRATION BUILDING
 SCALE: 1/8"=1'-0"

Seal:

Consultants:
STRUCTURAL ENGINEER: TKW Engineers
CIVIL ENGINEER: Perez Engineering
MEP / FP ENGINEER: TLC Engineering
PLANNER: The Craig Co.
LANDSCAPE ARCHITECT: Elizabeth Newland
Revisions:

**KEY WEST ADMINISTRATION
 BUILDING COMPLEX**
 525 ANGELA STREET
 KEY WEST, FL 33040

NOTED: 8/18/2009 8:34 AM

Drawing Size 24x36	Project #: MK-08021D
Drawn By: ADS	Checked By: MBI

Title:
**EXTERIOR
 ELEVATIONS
 ADMINISTRATION
 BUILDING**

Sheet Number:
A3.1.3

Date: - AUGUST 14, 2009

1 0806/0 A ABA G A&E/08/14/09

\\\161.168.222.222\ahmet\pdm\1\08-08021\08\08021_01.dwg, 8/19/2009 8:34 AM, scale: 1'-0" = 1'-0", author: ahmet

Seal:

Consultants:
STRUCTURAL ENGINEER:
TKW Engineers
CIVIL ENGINEER:
Perez Engineering
MEP / FF ENGINEER:
TLC Engineering
PLANNER:
The Craig Co.
LANDSCAPE ARCHITECT:
Elizabeth Newland

Revisions:

KEY WEST ADMINISTRATION
BUILDING COMPLEX
525 ANGELA STREET
KEY WEST, FL 33040

NOTED: 8/24/2009 9:58 AM

Drawing Size: 24x36
Project #: MK-08021D
Drawn By: ADS
Checked By: MBI

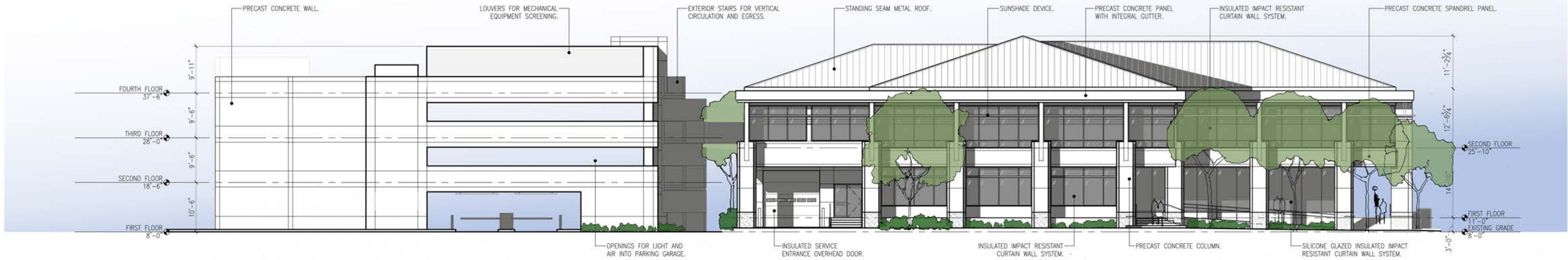
Title:
OVERALL
EXTERIOR
ELEVATIONS

Sheet Number:

A3.1.1

Date: - AUGUST 14, 2009

©2009 by mbi | k2m Architecture, Inc.



02 WEST ELEVATION - OVERALL
A3.1.1 SCALE: 3/32"=1'-0"



01 EAST ELEVATION - OVERALL
A3.1.1 SCALE: 3/32"=1'-0"

\\101.188.222.222\shared\Users\jacob\2009\MK-08021D\City of Key West\Bldg\Drawings\Arch\A3.1.1_34x36.dwg, 8/17/2009 9:58 AM, scale: 1'-0" = 1'-0", author: jacob

Seal:

Consultants:

STRUCTURAL ENGINEER:
TKW Engineers

CIVIL ENGINEER:
Perez Engineering

MEP/FP ENGINEER:
TLC Engineering

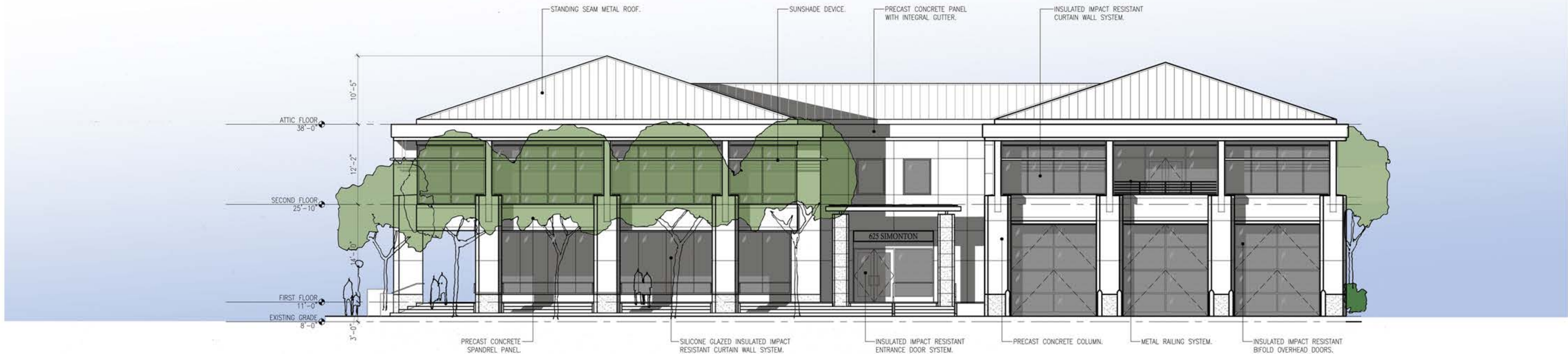
PLANNER:
The Craig Co.

LANDSCAPE ARCHITECT:
Elizabeth Newland

Revisions:



02 SOUTH ELEVATION - ADMINISTRATION BUILDING
A3.1.2 SCALE: 1/8"=1'-0"



01 EAST ELEVATION - ADMINISTRATION BUILDING
A3.1.2 SCALE: 1/8"=1'-0"

KEY WEST ADMINISTRATION BUILDING COMPLEX
5/25 ANGELA STREET
KEY WEST, FL 33040

NOTED: 8/24/2009 9:59 AM

Drawing Size	Project #
24x36	KK-08021D
Drawn By:	Checked By:
ADS	MBI

Title:
**EXTERIOR ELEVATIONS
ADMINISTRATION BUILDING**

Sheet Number:
A3.1.2

V:\161.166.222\Users\james\Projects\0809\0809_KW_Admin\0809_KW_Admin.dwg, 8/24/2009 9:59 AM, scale: 1/8" = 1'-0", author: james