

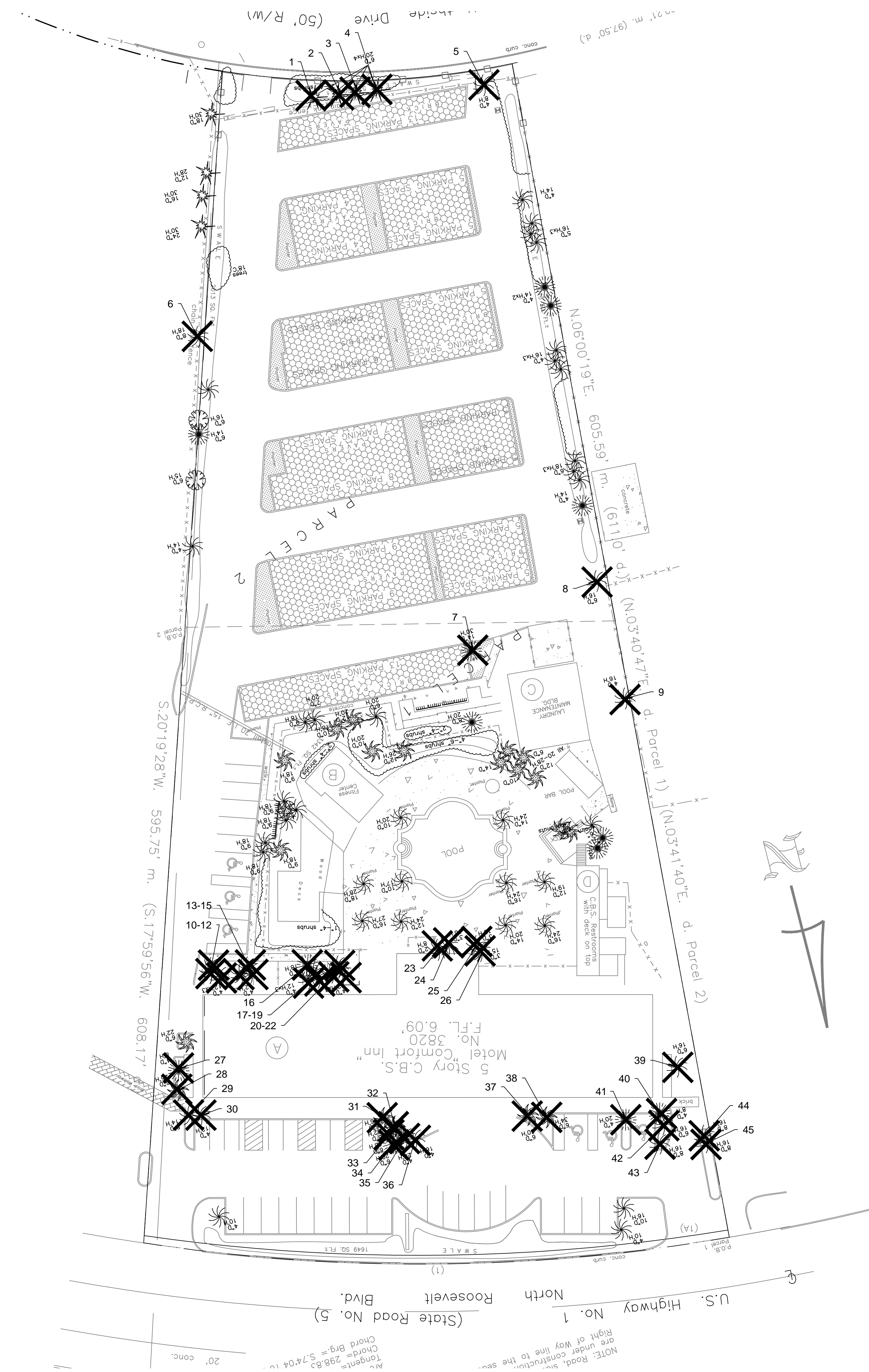


TABLE OF REMOVED TREES

NO.	TYPE	DBH	HEIGHT	REASON REMOVED
1	PINE	6"	20'	EXOTIC
2	PINE	6"	20'	EXOTIC
3	PINE	6"	20'	EXOTIC
4	PINE	6"	20'	EXOTIC
5	PALM	4"	8'	PARKING/DRIVEWAY CONSTRUCTION
6	PALM	8"	18'	FENCE DEMOLITION
7	UNKNOWN	14"	30'	PARKING/DRIVEWAY CONSTRUCTION
8	PALM	6"	16'	PARKING/DRIVEWAY CONSTRUCTION
9	PALM	4"	16'	PARKING/DRIVEWAY CONSTRUCTION
10	PALM	4"	12'	NEW CONSTRUCTION
11	PALM	4"	12'	NEW CONSTRUCTION
12	PALM	4"	12'	NEW CONSTRUCTION
13	PALM	4"	12'	NEW CONSTRUCTION
14	PALM	4"	12'	NEW CONSTRUCTION
15	PALM	4"	12'	NEW CONSTRUCTION
16	UNKNOWN	9"	18'	NEW CONSTRUCTION
17	PALM	4"	12'	NEW CONSTRUCTION
18	PALM	4"	12'	NEW CONSTRUCTION
19	PALM	4"	12'	NEW CONSTRUCTION
20	PALM	4"	12'	NEW CONSTRUCTION
21	PALM	4"	12'	NEW CONSTRUCTION
22	PALM	4"	12'	NEW CONSTRUCTION
23	PALM	2"	8'	POOL DECK RENOVATION
24	PALM	3"	16'	POOL DECK RENOVATION
25	PALM	3"	15'	POOL DECK RENOVATION
26	PALM	3"	15'	POOL DECK RENOVATION
27	UNKNOWN	4"	8'	NEW CONSTRUCTION
28	COCONUT	6"	25'	NEW CONSTRUCTION
29	PALM	8"	14'	NEW CONSTRUCTION
30	PALM	4"	12'	NEW CONSTRUCTION
31	COCONUT	6"	26'	NEW CONSTRUCTION
32	COCONUT	6"	22'	NEW CONSTRUCTION
33	UNKNOWN	6"	18'	NEW CONSTRUCTION
34	UNKNOWN	6"	20'	NEW CONSTRUCTION
35	PALM	4"	20'	NEW CONSTRUCTION
36	PALM	4"	16'	NEW CONSTRUCTION
37	COCONUT	6"	30'	NEW CONSTRUCTION
38	COCONUT	6"	34'	NEW CONSTRUCTION
39	PALM	6"	16'	PARKING/DRIVEWAY CONSTRUCTION
40	UNKNOWN	4"	8'	PARKING/DRIVEWAY CONSTRUCTION
41	UNKNOWN	4"	20'	PARKING/DRIVEWAY CONSTRUCTION
42	PALM	6"	16'	PARKING/DRIVEWAY CONSTRUCTION
43	PALM	8"	16'	PARKING/DRIVEWAY CONSTRUCTION
44	PALM	8"	16'	PARKING/DRIVEWAY CONSTRUCTION
45	PALM	8"	16'	PARKING/DRIVEWAY CONSTRUCTION

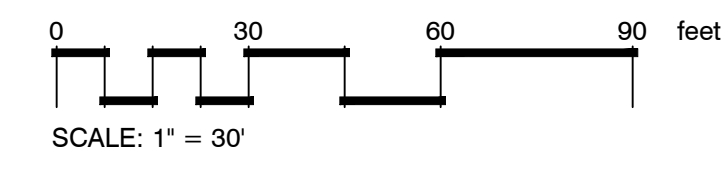
ISSUANCES

No.	Drawing Issue Description	Date
1	SCHEMATIC DESIGN	12/17/2012
2	DESIGN DEVELOPMENT	02/25/2013
3	100% CDS	04/22/2013



X = TREE TO BE REMOVED

1 OVERALL SHEET LAYOUT SCALE: 1" = 30'-0"



KEY WEST HOTEL COLLECTION - HAMPTON INN & SUITES - (SITE D)

3820 North Roosevelt Boulevard Key West, Florida 33040

J.L. Woode Ltd.

EXISTING SITE PLAN

BOB NEAL Principal/Designer	20120295
MANNY DOMINGUEZ Design Director	05/08/13
ANDRES RUBIO Project Manager	
T. JACK BAGBY Project Architect	
GARY WARNER Director of Landscape Architecture	

L0.01

PROJECT NUMBER: 20120295 PROJECT NAME: KEY WEST HOTEL COLLECTION - HAMPTON INN & SUITES - (SITE D) SHEET NUMBER: A2.01 - COMPOSITE FLOOR PLANS NC:2012/20120295-7 drawings/67-1 rev/users/20120295_2011_hampton_peter.rvt 12/26/2012 9:14:38 AM