



**THE CITY OF KEY WEST**  
1300 White St  
Key West, FL 33040

**ADDENDUM NO. 1**  
**ITB 23-019**  
**Replace KWPD Flooring**

This addendum is issued as supplemental information to the bid package for clarification of certain matters of both a general and a technical nature. The referenced bid package is hereby addended in accordance with the following items:

- 1. 6mil visqueen moisture barrier with 6" overlap on seams required on the first floor. Moisture barrier is not required on the second floor.**
- 2. Room 107 will not be a part of the project.**
- 3. Cabinets in Room 123 will be moved.**
- 4. The floorplan is attached to this Addendum.**
- 5. Slip under transition strip in doorways meeting ADA requirements.**

All Bidders shall acknowledge receipt and acceptance of this Addendum No. 1 by submitting the addendum with their proposal. Proposals submitted without acknowledgement or without this Addendum may be considered non-responsive.

Signature

A handwritten signature in black ink, appearing to be "CEO", written over a horizontal line.

*Gulf-Atlantic Construction Group, INC*  
Name of Business



González Architects

3136  
Kortzside  
Drive  
Key West,  
Florida  
33540

(305) 894-5748  
FAX  
(305) 894-8217

Sheet  
JA 0002886  
AR 0008184

Project  
**PUBLIC SAFETY FACILITY  
PHASE II - POLICE STATION**  
KCO West, Florida  
Sheet Title  
FOUNDATION AND  
FIRST FLOOR  
FRAMING PLAN

Revised  
AS SHOWN 06-25-01

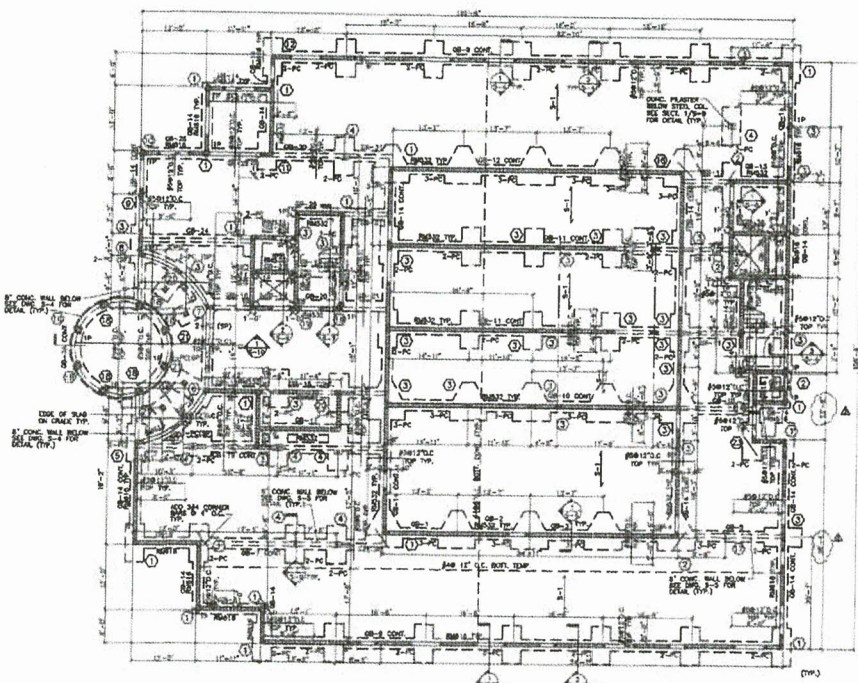
Project Number  
S9-223  
Date  
09/01/00  
Drawn By  
OLEM  
Checked By  
TL

Sheet Number  
**S-1**  
of



**REINFORCED MASONRY LEGEND**  
(PROVIDE VERTICAL REINFORCEMENT IN BRICKED CELLS)

- 1- PROVIDE 3#3 VERTICAL BARS IN BRICKED CELLS, TYPICAL AT ALL INTERIOR AND EXTERIOR REINFORCED CORNERS
- 2- ADD 3#4 CORNER BARS @ 4" O.C. x 4'-0" LONG @ ALL 90° CORNERS OF THE SLAB (TYP.)
- 3- ADD 1#3 VERTICAL BAR AT EA. SIDE OF THE WINDOW & DOOR OPENINGS IN BRICKED CELLS FULL HEIGHT OF THE MASONRY WALL. USE IN 2 CELLS @ EA. SIDE OF WINDOW AND DOOR OPENING GREATER THAN 2'-0".
- 4- CONTRACTOR TO PROVIDE 8" MIN. THICK U.G.M. CONCRETE LINTEL OVER ALL MASONRY OPENINGS. TOP 6" BOLT @ 24" ON CENTER @ 4" O.C. LEVEL TO HAVE AIR IN BEARING ON EA. END OF THE OPENING. CONTRACTOR TO KEEP THE LINTEL SHORED UNTIL THE LINTEL BEAM OR SLAB IS Poured AND CURED.
- 5- PROVIDE CONG. FRUSTRER UNDER ALL STEEL COLUMNS SEE DET. 1/5-9 FOR DETAILS TYPICAL.
- 6- PROVIDE 6" CONG. WALL UNDER ALL GROUND FLOOR SLAB SEE DET. S-4 & S-5 FOR DETAILS TYPICAL.



**FOUNDATION & FIRST FLOOR FRAMING PLAN**  
VP-4-0 True North Point North

**PISTORINO & ALAM**  
CORPORATE ENGINEERS, P.C.  
8401 E.W. 47th AVE., SUITE 111  
MIAMI PALM BEACH 33409 278-7828  
PROJECT NO. 99-223

DESIGN ENCL:	1A
DATE:	07/02/00
BY:	OLEM
CHECKED BY:	TL



Gonzalez Architects

5150  
Harcourt  
Drive  
Key West,  
Florida  
33540

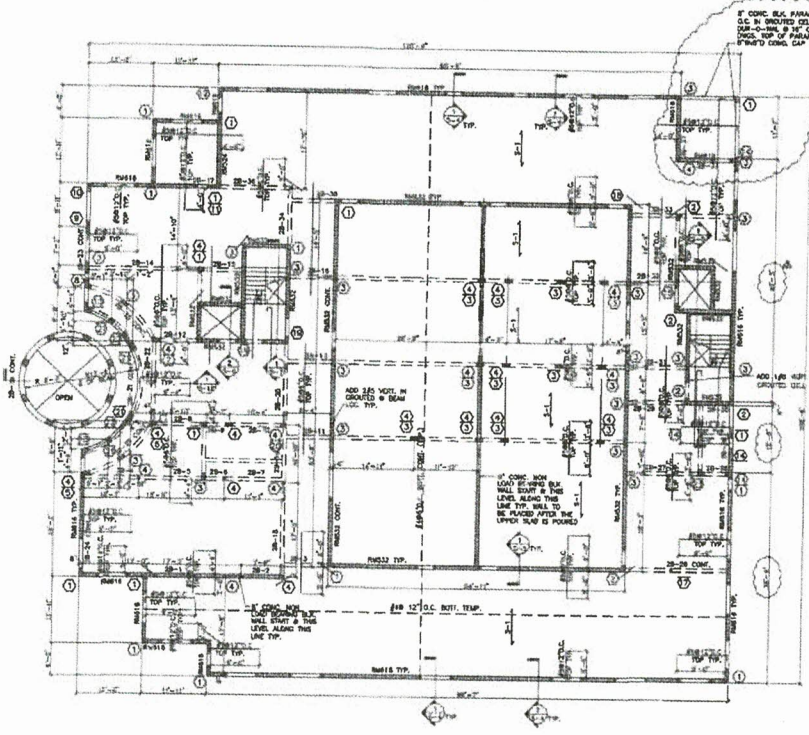
(305) 894-3740  
FAX  
(305) 894-8217

SEA  
AT 00082855  
AT 0008134

Project  
**PUBLIC SAFETY FACILITY  
PHASE II - POLICE STATION**  
Key West, Florida  
Sheet Title  
SECOND FLOOR  
FRAMING PLAN

Revisions  
AS SHOWN 05-28-01  
AS SHOWN 09-28-01  
Project Number  
98-223  
Date  
08/01/00  
Drawn By  
ELEM  
Checked By  
TL

Sheet Number  
**S-2**

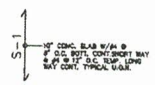


2" CONC. BLK. PARALLEL W/AS @ 12" O.C. IN UNGRADED CELLS & HORIZ. REINFT. OVER-HEADS @ 12" O.C. SEE ARCH. CONC. TOP OF PARALLEL & PROVIDE 1" REINFT. CONC. CAP. W/AS CONC. TOP.



**REINFORCED MASONRY LEGEND**  
(PROVIDE VERTICAL REINFORCEMENT IN UNGRADED CELLS)

- 1- PROVIDE 2#5 VERTICAL BARS IN UNGRADED CELLS, TYPICAL AT ALL INTERIOR AND EXTERIOR 90° MASONRY CORNERS.
- 2- ADD 2#4 CORNER BARS @ 4" O.C. x 4'-0" LONG @ ALL 90° CORNERS OF THE SLAB (TYP).
- 3- ADD 1#5 VERTICAL BAR AT EA. SIDE OF THE WINDOW & DOOR OPENING IN UNGRADED CELL. FULL HEIGHT OF THE MASONRY WALL. USE 2" x 2" CELLS @ SA. SIDE OF WINDOW AND DOOR OPENING. SEE ARCH. DRAWING.
- 4- CONTRACTOR TO PROVIDE 1" REINFT. U.S.A. CONCRETE LITEL. OVER ALL MASONRY OPENING W/2#5 TOP & BOT. @ 22" INTERVALS @ 4" O.C. LITEL. TO HAVE MIN. 6" BEARS ON EA. SID. OF THE OPENING. CONTRACTOR TO FILL THE ENTIRE BEARING WITH THE LITEL. BEAM OR SLAB IS POURED AND CURED.
- 5- CONTRACTOR TO PROVIDE 2#5 REINFT. CONC. TOP BEAM OVER ALL BLOCK WALLS W/AS. ON THE PLAN SEE DWG. S-3 FOR THE REINFT. DETAIL. TOP OF THE BEAM 4'-0" TYPICAL.
- 6- SEE SECT. 1/2-S FOR THE CONNECTION OF STEEL COLUMN TO CONCRETE BEAM TYP.



**REINFORCED CONCRETE SLAB LEGEND**

**SECOND FLOOR FRAMING PLAN**



	<b>PIERDRINO &amp; SEAM</b>	DESIGN DWG. NO.	11
	CONSTRUCTION ENGINEERS, INC.	DRAWN BY	TL
	8401 SW 17TH AVE. SUITE 412	PROJECT NO.	98-223
	MIAMI, FL 33173 (305) 571-7000	DATE	08/01/00