

CODE SUMMARY

2006-2015 INTERNATIONAL BUILDING CODE
2009-2012 UNIFORM MECHANICAL CODE
2006-2015 INTERNATIONAL MECHANICAL CODE
2004 CHICAGO BUILDING CODE
2013 KENTUCKY BUILDING CODE
2015 MINNESOTA STATE BUILDING CODE
2015 MINNESOTA STATE MECHANICAL CODE
(CH. 1346-2012 IMC & 2012 IFGC W/AMEND)
2015 MINNESOTA STATE ENERGY CODE (CH. 1323)
2009 NEW MEXICO COMMERCIAL BUILDING CODE
2014 NEW MEXICO ELECTRICAL CODE
2009 NEW MEXICO MECHANICAL CODE
2012 MICHIGAN BUILDING CODE
2012 MICHIGAN MECHANICAL CODE
2011 MICHIGAN ELECTRICAL CODE
2013 CALIFORNIA BUILDING CODE
2013 CALIFORNIA GREEN BUILDING STANDARDS
2013 CALIFORNIA ENERGY CODE TITLE 24
2013 CALIFORNIA ELECTRICAL CODE
2013 CALIFORNIA FIRE CODE
CALIFORNIA TITLE 25
2010 NEW YORK CITY BUILDING CODE
NORTH DAKOTA ELECTRICAL WIRING STANDARDS
2014 FLORIDA BUILDING CODE W/ 2016 SUPPLEMENTS
2014 FLORIDA BUILDING CODE MECHANICAL W/ 2016 SUPPLEMENTS
2014 FLORIDA BUILDING CODE FUEL GAS W/ 2016 SUPPLEMENTS
9TH MASSACHUSETTS STATE BUILDING CODE
2011 OHIO BUILDING CODE
2011 OHIO MECHANICAL CODE
2011 OHIO FIRE CODE
2014 OREGON STRUCTURAL SPECIALITY CODE
2014 OREGON MECHANICAL SPECIALITY CODE
2014 OREGON ENERGY EFFICIENCY SPECIALITY CODE
2012 NORTH CAROLINA BUILDING CODE
2011 NORTH CAROLINA ELECTRICAL CODE
2012 NORTH CAROLINA MECHANICAL CODE
2012 NORTH CAROLINA ENERGY CONSERVATION CODE
2012 TEXAS ACCESSIBILITY STANDARDS
1996 - 2017 NATIONAL ELECTRIC CODE
2004,2007,2010,2013 ASHRAE 90.1
2006,2009,2012,2015 INTERNATIONAL ENERGY CONSERVATION CODE
2003,2005,2006,2009,2012,2015 NFPA 101 LIFE SAFETY CODE
2009,2012 INTERNATIONAL FUEL GAS CODE
2012 NFPA 1 UNIFORM FIRE PREVENTION CODE
2002 ARKANSAS FIRE PREVENTION CODE
2012 NORTH CAROLINA FIRE PREVENTION CODE
RHODE ISLAND FIRE SAFETY CODE

NOTES

1. LISTED CODES INCLUDE LATEST STATE ADOPTED AMENDMENTS.
2. THIS SHELTER IS AN "ENCLOSED STRUCTURE" NOT INTENDED FOR HUMAN HABITATION.
3. APPROVED MODEL MAY BE MIRROR IMAGE.
4. OCCUPANT LOAD = 0, OHIO = 2
5. SPECIAL CONDITIONS AND PERMISSIBLE TYPES OF GASSES: N/A
6. SHELTER HAS NO COUNTY PLACEMENT RESTRICTION IN THE STATE OF MARYLAND.
7. STATE INSIGNIA LABEL/DECAL IS LOCATED NEAR MAIN ELECTRICAL SERVICE PANEL.
8. DOOR MUST BE MINIMUM 90 MINUTE FIRE RATED IF USED IN 2 HOUR FIRE RATED SHELTER AND MINIMUM 45 MINUTE FIRE RATED IF USED IN 1 HOUR FIRE RATED SHELTER.
9. ACCESS TO SHELTER SHALL COMPLY WITH MARYLAND ACCESSIBILITY CODE COMAR.05.02.02.07 / ADAAG SECTION 4.1.2.
10. APPLICABLE INTERNAL PRESSURE COEFFICIENT (N/A) - THESE SHELTERS CONFORM TO THE REQUIREMENTS OF (2000,03,06,09 IBC), ASCE 7-05, METHOD 1 SIMPLIFIED PROCEDURE; (2012,15 IBC, 2014 FBC) ASCE 7-10 SIMPLIFIED DIAPHRAGM LOW-RISE BUILDINGS.
11. WIND IMPORTANCE FACTOR - I_W = 1.000
12. THESE PLANS ARE DESIGNED TO BE USED FOR THE CONSTRUCTION OF COMMERCIAL MODULAR UNITS, IN ACCORDANCE WITH CA HEALTH AND SAFETY CODE SECTION 18028, 1991 UBC, 1993 NEC, ANSI A117.1-1986.
13. HVAC UNITS ARE SIZED PER CUSTOMER REQUIREMENTS.
14. EXTERNAL GROUNDING BY OTHERS.
15. SHELTER CONSTRUCTED IN ACCORDANCE WITH 61G20-3.006.
16. THIS BUILDING DOES NOT CONTAIN PLUMBING FACILITIES. PLUMBING FACILITIES SHALL BE PROVIDED ON SITE SUBJECT TO THE LOCAL AUTHORITY HAVING JURISDICTION.

EXTERIOR COMPONENTS AND CLADDING POSITIVE AND NEGATIVE PRESSURES IN TERMS OF PSF				
ZONE	2000 IBC, 120 MPH WIND SPEED	2003 IBC, 2006 IBC, 120 MPH WIND SPEED	06, 09, 12, 15 IBC / 2014 FBC 150 MPH WIND SPEED	2014 FBC 180 MPH WIND SPEED
ROOF ZONE 1 (100 SF EFFECTIVE WIND AREA)	+12.1/-28.7	+10.0/-28.7	+15.7/-44.8	+22.7/-64.5
ROOF ZONE 2 (20 SF EFFECTIVE WIND AREA)	+12.1/-46.9	+12.0/-46.9	+18.6/-73.4	+26.9/-105.8
ROOF ZONE 3 (10 SF EFFECTIVE WIND AREA)	+12.7/-79.1	+12.7/-79.1	+20.0/-123.7	+28.7/-178.1
WALL ZONE 4 (200 SF EFFECTIVE WIND AREA)	+25.8/-28.4	+25.8/-28.4	+39.6/-43.4	+58.2/-64.1
WALL ZONE 5 (30 SF EFFECTIVE WIND AREA)	+29.3/-38.0	+29.3/-38.0	+45.9/-59.2	+65.9/-92.3

INDEX OF SHEETS

* = DENOTES SHEETS WHICH MAY CONTAIN FIELD WORK

LAYOUT DRAWINGS

- 0-0 COVER SHEET
- 0-1 PARTS LIST
- 0-2 PARTS LIST (CONTINUED)
- 0-3 PARTS LIST (CONTINUED)
- 0-4 SHOP DETAILS / CUT LIST
- 0-5 OPTIONS LIST
- * 1-0 EXTERIOR WALL ELEVATION "A"
- * 1-1 EXTERIOR WALL ELEVATION "C"
- * 1-2 EXTERIOR WALL ELEVATIONS "B" & "D"
- * 1-3 EXTERIOR WALL ELEVATION "B" (UNISTRUT LAYOUT)
- 2-0 FLOOR PLAN
- 2-1 EQUIPMENT LAYOUT PLAN
- 2-2 ROOM OVERLAY PLAN
- 3-0 REFLECTED CEILING PLAN (ELECTRICAL)
- 3-1 REFLECTED CEILING PLAN (RAYCAP TELCOFLEX)
- 3-2 REFLECTED CEILING PLAN (RECTIFIER DETAILS)
- 3-3 REFLECTED CEILING PLAN (MECHANICAL)
- 3-3 REFLECTED CEILING PLAN (HALO DETAILS)
- 4-0 INTERIOR ELEVATION WALL "A & C" (ELECTRICAL)
- 4-1 INTERIOR ELEVATION WALL "B & D" (ELECTRICAL)
- 5-0 INTERIOR ELEVATION WALL "A & C" (MECHANICAL)
- 5-1 INTERIOR ELEVATION WALL "B & D" (MECHANICAL)
- * 5-2 MECHANICAL GROUND BAR INSTALLATION DETAILS

REFERENCE DRAWINGS

- 108-007 ABBREVIATIONS & SYMBOLS
- 108-008 CONCRETE SHELTER PANEL CONNECTION DETAILS
- 108-015 GENERAL ELECTRICAL NOTES & LEGEND
- 108-016 GENERAL CASTING SPECIFICATIONS
- 108-035 CONCRETE SHELTER INTERIOR INSULATION/PANEL INSTALLATION DETAILS
- 108-039 ANGLED & FLAT TIE DOWN DETAILS
- 108-087 CANOPY FIELD INSTALLATION DETAIL
- 108-088 SHELTER LIFTING DETAILS
- 108-089 SHELTER LOADING DETAILS
- 503-053 ELECTRICAL SCHEMATIC WIC SHELTER

STRUCTURAL DRAWINGS (MANUFACTURER ONLY)

- 1 OF 7 STRUCTURAL SPECIFICATIONS
- 2 OF 7 DOOR POST FABRICATTON
- 3 OF 7 STRUCTURAL LAYOUT SIDE WALL "A"
- 4 OF 7 STRUCTURAL LAYOUT END WALL "B"
- 5 OF 7 STRUCTURAL LAYOUT SIDE WALL "C"
- 6 OF 7 STRUCTURAL LAYOUT END WALL "D"
- 7 OF 7 STRUCTURAL LAYOUT ROOF

221-0800X0800-04 CONCRETE FLOOR ASSEMBLY

DESIGN PARAMETERS

USE GROUP: S-2 (IBC, FBC)
U (OBC)

CONSTRUCTION TYPE: V-B (IBC, FBC)

OCCUPANCY CATEGORY: II

ROOF LIVE LOAD: ??? PSF

FLOOR LIVE LOAD: ??? PSF

GROUND SNOW LOAD: ??? PSF (N/A FOR FBC 2014)

WIND SPEED: 150 MPH/EXPOSURE C

SEISMIC ZONE FOR SBC & UBC: 4

SEISMIC DESIGN CATEGORY FOR IBC: E (IBC)

USE GROUP-III (OBC)

SITE CLASS-D (OBC)

MEETS BULLET RESISTANCE UL 752 LEVELS 1, 2, 3 & 6 FOR 4" CONCRETE

CONCRETE f'_c: 5000 PSI AT 28 DAYS

CONCRETE UNIT WEIGHT: 115 PCF

FIRE RATING: 2 HOUR WALL PER IBC/FBC TABLE 720.1 (2) ITEM NUMBER 4-1.1,

2 HOUR ROOF PER IBC/FBC TABLE 720.1 (3) ITEM NUMBER 3-1.1,

SOLID LIGHTWEIGHT CONCRETE

(LIMITATIONS MAY APPLY DUE TO OPENINGS AND PROXIMITY ON SITE)

MINIMUM FIRE SEPARATION DISTANCE: 10FT

PHYSICAL PROPERTIES

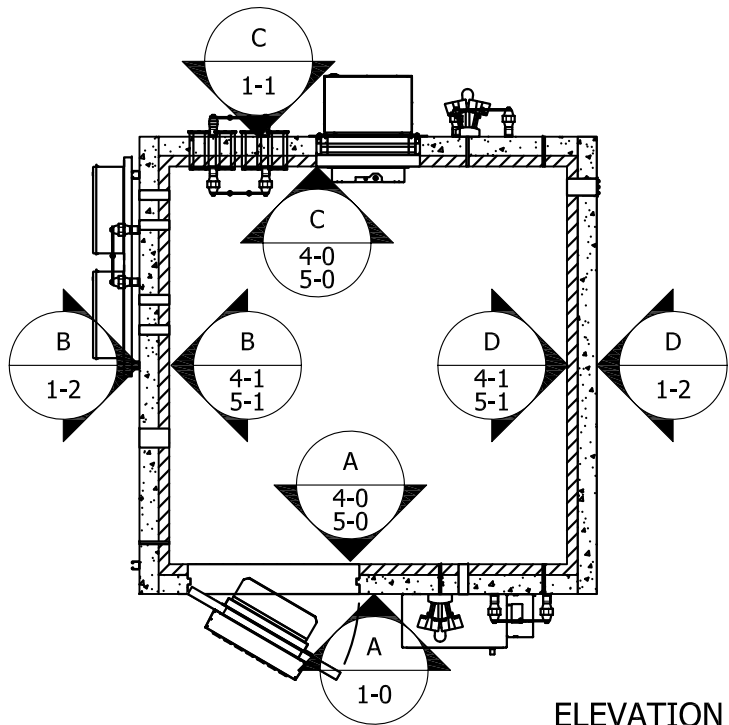
SHELTER DIMENSIONS: 8'-0"W X 8'-0"L

SHIPPING DIMENSIONS: 8'-6"W X 9'-3 3/16"L X 9'-4 1/2"H

SHELTER WEIGHT: 21,000 LBS (SHELTER ONLY)

EXCLUDES BATTERIES AND RADIO EQUIPMENT

SHELTER WEIGHT: 24,500 LBS (SHELTER WITH EQUIPMENT)



ELEVATION KEY

THIS DRAWING IS THE CONFIDENTIAL PROPERTY AND CONTAINS TRADE SECRETS OF CELIXION, LLC. ALL DESIGN, LAYOUT AND FABRICATION DETAILS CONTAINED IN THIS DRAWING ARE CONSIDERED PROPRIETARY. ANY USE OF THESE DRAWINGS OR THE INFORMATION CONTAINED HEREIN FOR ANY REASON OTHER THAN AS EXPRESSLY AUTHORIZED BY SABRE INDUSTRIES, INC. IS STRICTLY PROHIBITED. CONTRACTORS PERFORMING AUTHORIZED WORK WITHIN THE SHELTER ARE AUTHORIZED TO USE THE INFORMATION CONTAINED WITHIN THE DRAWING FOR EQUIPMENT INSTALLATION PURPOSES. THIS DRAWING HAS BEEN DISTRIBUTED WITH THE UNDERSTANDING THAT ANYONE RECEIVING OR OTHERWISE OBTAINING POSSESSION OF IT WILL BE EXPRESSLY NOTIFIED OF ITS CONFIDENTIAL NATURE.

Sabre Industries
Building Systems by Celixion
5031 Hazel Jones Road
Bossier City, LA 71111
Voice: (318) 213-2900
Fax: (318) 213-2919
www.sabreindustries.com

CUSTOMER:

AT&T
MOBILITY

PROJECT:
08'-0" X 8'-0"
CONCRETE SHELTER
COVER SHEET

FILENAME:

SATN70

SCALE:

N.T.S.

TOLERANCE:

DRWN. BY:

G. BRINKMAN

DATE:

01/04/18

CHK. BY:

C. MITCHEL

DATE:

01/04/18

APP. BY:

D. BRANNEN

DATE:

01/04/18

SHEET NO.

0-0

DRAWING NO.:

SATN70

REV.:

1R

PARTS LIST							
ITEM	QTY	U/M	P/N	DEPT	DESCRIPTION	MFG	MFG P/N
1	1.0000	EA.	522001-00045	20	HVAC,SLEEVE,12"X14 3/4"X6"	CELLXION	522001-00045
2	1.0000	EA.	522001-00046	20	HVAC,SLEEVE,5 1/2"X13 1/2"X6"	CELLXION	522001-00046
3	2.0000	EA.	170122	30	PIPE CAP,PLASTIC,NPT,NIAGARA T-6X (OR EQUAL)	NIAGARA	T-6X
4	1.0000	EA.	400108	30	LUG,2H,#4,GRY,1/4"BOLT,3/4"C/C,LB (OR EQUAL)	PANDUIT	LCC4-14B-L
5	1.0000	EA.	410014	30	CONDULET,BODY AL LB,3/4",LB75D		
6	1.0000	EA.	410068	30	CONNECTOR,EMT,1/2",RT (OR EQUAL)	STEEL CITY	TC711A
7	1.0000	EA.	410069	30	CONNECTOR,EMT,3/4",RT (OR EQUAL)	STEEL CITY	TC812SC
8	1.0000	EA.	410134	30	NIPPLE,RIGID,1/2",CLOSE		
9	1.0000	EA.	410182	30	NIPPLE,RIGID,3/4"X8 1/2"		
10	2.0000	EA.	410183	30	NIPPLE,RIGID,3/4"X7 1/2"		
11	3.0000	EA.	410184	30	NIPPLE,RIGID,1/2"X7 1/2"		
12	7.0000	EA.	410205	30	NIPPLE,RIGID,2"X8"		
13	1.0000	EA.	410274	30	PIPE,GALV,SCH 40,4",CAP (OR EQUAL)	MORRILL	GPF-C40
14	1.0000	EA.	410537	30	NIPPLE,RIGID,4"X8"		
15	12.0000	EA.	430005	30	BOX,JUNCT,4"X4",2-1/8D,1/2"-3/4KO (OR EQUAL)	STEEL CITY	521711234E
16	4.0000	EA.	430050	30	WIREWAY,GALV,4"X4",U-CONNECTOR (OR EQUAL)	HOFFMAN	F-44GUCGV
17	1.0000	EA.	430054	30	BOX,JUNCT,2"X4",1 7/8" (OR EQUAL)	STEEL CITY	103-W-1/2
18	1.0000	EA.	430061	30	WIREWAY,GALV,4X4,90D ELBOW (OR EQUAL)	HOFFMAN	F-4490EGV
19	1.0000	EA.	430267	30	WIREWAY,GALV,4"X4"X24",W/O KO'S (OR EQUAL)	HOFFMAN	F-44T124GV
20	1.0000	EA.	430268	30	WIREWAY,GALV,4"X4"X48",W/O KO'S (OR EQUAL)	HOFFMAN	F-44T148GV
21	2.0000	EA.	430336	30	WIREWAY,GALV,4"X4"X12",W/O KO'S (OR EQUAL)	HOFFMAN	F-44T112GV
22	2.0000	EA.	431419	30	BOX,JUNCT,4-11/16"W/3/4" & 1" K/O'S (OR EQUAL)	STEEL CITY	721711
23	1.0000	EA.	431427	30	ALARM BLOCK,SIEMON,S66B3-100MH-49 (OR EQUAL)	SIEMON	S66B3-100MH-49
24	1.0000	EA.	432111	30	PANEL,PTLC,INT,200A,30P,MTS,TVSS,CL,NEMA 3R		PTLC-MTS-12200-CL
25	1.0000	EA.	460029	30	CONTROLLER,LEAD LAG,SCHROFFTECH	SCHROFFTECH	AF000119
26	4.5000	FT.	510126	30	UNISTRUT,1 5/8" CHANNEL,P1000 GALV		
27	12.0000	FT.	510126	30	UNISTRUT,1 5/8"CHANNEL,P1000 GALV		
28	2.0000	EA.	168186	40	WASHER,1/2" FLAT,STAINLESS (OR EQUAL)	FASTENAL	78021
29	4.0000	FT.	400050	40	WIRE,#2 THHN,STRAND,GRN		
30	1.0000	EA.	410005	40	CONDULET,BODY COVER,3/4" AL,CC75		
31	1.0000	EA.	410040	40	CONDULET,GASKET 3/4",GASK025N		
	73.0000	FT.	410111	40	CONDUIT,LFMC,3/4",SEALTITE (OR EQUAL)	ANAMET ELECTRICAL, INC	EF34
35	5.0000	FT.	410112	40	CONDUIT,LFMC,1/2",SEALTITE (OR EQUAL)	ANAMET ELECTRICAL, INC	EF12
36	7.0000	EA.	410120	40	CONNECTOR,LFMC,3/4",90D,SEALTITE (OR EQUAL)	T&B	5253
37	8.0000	EA.	410128	40	CONNECTOR,LFMC,3/4",45D,SEALTITE (OR EQUAL)	T&B	5243
38	2.0000	EA.	410129	40	CONNECTOR,LFMC,3/4",STRAIGHT,ST (OR EQUAL)	T&B	5233
39	2.0000	EA.	410555	40	COVER,OCT,4" BLANK,W/1/2 KO (OR EQUAL)	RACO	724
40	1.0000	EA.	420006	40	LABEL,BLK,ELECT,"GFCI"	CELLXION	420006
41	2.0000	EA.	420009	40	LABEL,BLK,ELECT,"INTERIOR LIGHT"	CELLXION	420009
42	1.0000	EA.	420016	40	LABEL,BLK,ELECT,"LEAD-LAG CONTROL"	CELLXION	420016
43	1.0000	EA.	420018	40	LABEL,BLK,ELECT,"HVAC #1"	CELLXIONG	420018
44	1.0000	EA.	420024	40	LABEL,BLK,ELECT,"EXTERIOR LIGHT"	CELLXION	420024
45	16.0000	EA.	420033	40	LABEL,SELF TRANSFER,PANDUIT TTSL2 (OR EQUAL)	PANDUIT	S100X150VATY
46	1.0000	EA.	420041	40	LABEL,"ARC FLASH AND SHOCK WARNING		
47	1.0000	EA.	420143	40	LABEL,RED, ELECT,BONDING TAG	CELLXION	420143
48	1.0000	EA.	430001	40	COVER,BLANK PLATE,4X2,HANDY (OR EQUAL)	RACO	860
49	1.0000	EA.	430006	40	COVER,SWITCH PLATE,4X4,1 SWITCH (OR EQUAL)	STEEL CITY	460-BW
50	9.0000	EA.	430012	40	COVER,BLANK PLATE,4X4 (OR EQUAL)	APPLETON	8465
51	2.0000	EA.	430014	40	COVER,BLANK PLATE,4 11/16 (OR EQUAL)	APPLETON	8487
52	1.0000	EA.	430025	40	COVER,RECPT PLATE,4X4,2R (OR EQUAL)	APPLETON	8365N
53	1.0000	EA.	430034	40	RECEPTACLE,DUPLEX,125V,20A,IVORY (OR EQUAL)	COOPER	CR20V
54	1.0000	EA.	430072	40	COVER,SWITCH PLATE,4X4,2 SWITCH (OR EQUAL)	STEEL CITY	456
55	100.0000	EA.	430214	40	ALARM BLOCK,BRIDGE CLIP,SA1-SS		
56	1.0000	EA.	430328	40	SWITCH,DPST,20A,120V,IVORY (OR EQUAL)	HUBBELL	1222I

NOTES:

1. ITEMS LISTED THAT DO NOT SHOW AN ITEM NUMBER HAVE TWO OR MORE LIKE MATERIALS CUT TO DIFFERENT LENGTHS AND ARE MERGED TO PROVIDE A TOTAL QUANTITY REQUIRED. THESE MERGED ITEMS ARE DETAILED IN THE CUT LIST TABLE SHOWN AFTER THE PARTS LIST.

DEPT CODES:

- 20 - CARPENTRY
30 - CONDUIT
40 - ELECTRICAL
50 - MECHANICAL
51 - DOORS
55 - HVAC
70 - TILE/FLOORING
75 - GENERATOR
90 - SHIPPING
95 - MULTI-TASK
99 - PACKING LIST
150 - INSTALLATION DEPT

THIS DRAWING IS THE CONFIDENTIAL PROPERTY AND CONTAINS TRADE SECRETS OF CELLXION, LLC. ALL DESIGN, LAYOUT AND FABRICATION DETAILS CONTAINED IN THIS DRAWING ARE CONSIDERED PROPRIETARY. ANY USE OF THESE DRAWINGS OR THE INFORMATION CONTAINED HEREIN FOR ANY REASON OTHER THAN AS EXPRESSLY AUTHORIZED BY SABRE INDUSTRIES, INC. IS STRICTLY PROHIBITED. CONTRACTORS PERFORMING AUTHORIZED WORK WITHIN THE SHELTER ARE AUTHORIZED TO USE THE INFORMATION CONTAINED WITHIN THE DRAWING FOR EQUIPMENT INSTALLATION PURPOSES. THIS DRAWING HAS BEEN DISTRIBUTED WITH THE UNDERSTANDING THAT ANYONE RECEIVING OR OTHERWISE OBTAINING POSSESSION OF IT WILL BE EXPRESSLY NOTIFIED OF ITS CONFIDENTIAL NATURE.

Sabre Industries'
Building Systems by CellXion
5031 Hazel Jones Road
Bossier City, LA 71111
Voice: (318) 213-2900
Fax: (318) 213-2919
www.sabreindustries.com

CUSTOMER:

**AT&T
MOBILITY**

PROJECT:
**08'-0" X 8'-0"
CONCRETE SHELTER
PARTS LIST**

FILENAME:

SATN70

SCALE:

N.T.S.

TOLERANCE:

DRWN. BY:

G. BRINKMAN

DATE:

01/04/18

CHK. BY:

C. MITCHEL

DATE:

01/04/18

APP. BY:

D. BRANNEN

DATE:

01/04/18

SHEET NO.

0-1

DRAWING NO.:

SATN70

REV.:

1R

SABRE INDUSTRIES(TM) PROPRIETARY DOCUMENT

PARTS LIST (CONTINUED)

ITEM	QTY	U/M	P/N	DEPT	DESCRIPTION	MFG	MFG P/N
57	2.0000	EA.	430437	40	SWITCH,SPST,125VAC,24/48VDC,TOGGLE (OR EQUAL)	SELECTA	SS209-8-BG
58	2.0000	EA.	470736	40	LIGHT,EXT,LED,MOTION/PHOTO,29 WATT	COOPER LIGHTING	MST18920L
59	1.0000	EA.	470900	40	FAN,48VDC,ECON/MITI,SCHROFFTECH		
60	4.0000	EA.	470913	40	DC LIGHT FIXTURE,LED,SURF,LDX-TL	TEXAS FLOURESCENTS	LDX-TL
61	1.0000	EA.	490000	40	ALARM,MAGNETIC DOOR CONTACT (OR EQUAL)	HONEYWELL	7939WG-2GY
62	1.0000	EA.	400001	50	LUG,2H,#6,BLU,3/8"BOLT,1"C/C,LBFW (OR EQUAL)	PANDUIT	LCCXF6-38D-L
63	7.0000	EA.	400021	50	C-TAP,BROWN,54720 (OR EQUAL)	PANDUIT	CTAPF4-12TP-C
64	35.0000	FT.	400030	50	WIRE, #6 THHN, STRAND, GRN		
	37.0000	FT.	400050	50	WIRE,#2 THHN,STRAND,GRN		
69	18.0000	EA.	400051	50	C-TAP,ORANGE,54740 (OR EQUAL)	PANDUIT	CTAPF1/0-12TP-L
	79.6667		400099	50	WIRE,#2 SOLID COPPER,BARE,TINNED		
74	1.0000	EA.	400108	50	LUG,2H,#4,GRY,1/4"BOLT,3/4"C/C,LB (OR EQUAL)	PANDUIT	LCC4-14B-L
75	17.0000		400174	50	C-TAP,PINK,54730	PANDUIT	CTAPF2-12TP-C
76	3.0000	EA.	400259	50	LUG,2H,#2,BRN,3/8"BOLT,1"C/C,LBFW (OR EQUAL)	PANDUIT	LCCXF2-38D-L
77	11.0000	EA.	400307	50	LUG,2H,#4,GRY,3/8"BOLT,1"C/C,LBFW (OR EQUAL)	PANDUIT	LCCXF4-38D-L
78	9.0000	EA.	400371	50	LUG,2H,#6,BLU,1/4"BOLT,3/4"C/C,LBFW (OR EQUAL)	PANDUIT	LCCXF6-14B-L
79	3.0000	EA.	400390	50	LUG,2H,#2,BRN,1/4"BOLT,3/4"C/C,LBFW (OR EQUAL)	PANDUIT	LCCXF2-14B-L
80	5.0000	EA.	400500	50	CLAMP,GROUND 1/2"-1",GC-1Z,WEAVER (OR EQUAL)	NEER	GC-1Z
81	1.0000	EA.	400623	50	CLAMP,GROUND 1 1/2",RB12B,PERPENDIC (OR EQUAL)	HARGER	RB12B
82	24.0000	EA.	410343	50	WIRE STANDOFF,1 3/4" (OR EQUAL)	T&B	TC376
83	10.0000	EA.	410396	50	BUSHING, INSULATING, CEILING BRACKET		
84	12.0000	EA.	410396	50	BUSHING,INSULATING,CEILING BRACKET (OR EQUAL)	NYLON & ALLOYS, LTD	12SWS3104
85	4.0000	EA.	410397	50	BUSHING,INSULATING,WALL MOUNT BRACK (OR EQUAL)	NYLON & ALLOYS, LTD	12SWS3165
	38.2500	FT.	410441	50	CONDUIT,LFNC,1/2",SEALTITE		
95	1.0000	EA.	480005	50	SABRE GRAY/BLUE SERIAL NO. PLATE	CELLXION	480005
96	1.0000	EA.	480025	50	DESK,FOLD DOWN,20"X15"X2-3/4" (OR EQUAL)	McMASTER-CARR	FD100
	5.0000	EA.	510000	50	CABLE LADDER,12"X9'8 1/2",YELLOW ZI (OR EQUAL)	CENTRAL STEEL FABRICATORS	10012ZY
101	1.0000	EA.	510006	50	CABLE LADDER,12",CLOSING BAR,Y/Z	CENTRAL STEEL FABRICATORS	ET112YZ
102	7.0000	PAIR	510014	50	CABLE LADDER,WALL CLIP,WC12,PAIR (OR EQUAL)	CENTRAL STEEL FABRICATORS	WC12
103	4.0000	EA.	510061	50	CABLE LADDER,BLACK, END CAP (OR EQUAL)	CENTRAL STEEL FABRICATORS	RFCH1
104	4.0000	EA.	510074	50	CABLE LADDER,FLOOR BRKT,3.5"X1.5" (OR EQUAL)	CENTRAL STEEL FABRICATORS	WM11YZ
105	10.0000	EA.	510181	50	CABLE LADDER, TRAY HANGER, 9"		
106	1.0000	EA.	521021	50	HVAC,GRILL,SUPPLY,5"X13"		
107	1.0000	EA.	521121	50	HVAC,GRILL,RETURN,11 3/4"X13 3/4"		
108	1.0000	EA.	530003	50	WAVEGUIDE ENTRY,8 PORT,4",2X4 (OR EQUAL)	VALMONT	B576
109	1.0000	EA.	540218	50	GROUND STRAP ASSY,#6 THHN,14 1/2"	CELLXION	540218
110	4.0000	EA.	540232	50	GROUND STRAP ASSY,#6 THHN,12"	CELLXION	540232
111	1.0000	EA.	540293	50	G-BAR KIT,WITH PIGTAILS,1/4"X12" (OR EQUAL)	ROSENBERGER	GRB-ATTG0412-PUNI
112	1.0000	EA.	540492	50	G-BAR,1/4X4X12,2-10'DROP,NOHW	ERICO	
113	3.0000	EA.	540493	50	G-BAR,ERICO,1/4X4X12,1-10'DROP,KIT	ERICO	
114	1.0000	EA.	500001	51	DOOR,3070,LH/RHT,CURRIES,18G,45MIN		
115	3.0000	EA.	504000	51	DOOR,HINGES,STAINLESS STEEL 32D (OR EQUAL)	GLOBAL DOOR CONTROLS	CS4545BB
116	1.0000	EA.	504109	51	DOOR,CLOSER,W/90 DEGREE HOLD OPEN (OR EQUAL)	GLOBAL DOOR CONTROLS	TC2200
117	1.0000	EA.	504300	51	DOOR,LOCKGUARD,10" 32D		
118	1.0000	EA.	504400	51	DOOR,DRIP CAP,NGF16A-48" (OR EQUAL)	PEMKO	346C
119	1.0000	EA.	504409	51	DOOR,THRESHOLD 42"X4.75",.090 ALUM	CELLXION	504409
120	1.0000	EA.	504437	51	DOOR,THRESHOLD 42"X6.25",.090 ALUM	CELLXION	504437
121	1.0000	EA.	504500	51	LOCKSET,PB,CYD,SIMPLEX,LVR,LL1021B-	SIMPLEX	LL1021B-26D-41
122	1.0000	EA.	504501	51	CORE,LOCKSET,BEST,CONSTRUCT,GREEN		
123	1.0000	EA.	504555	51	DOOR,STRIKER PLATE,STANDARD		
124	1.0000	EA.	540216	51	GROUND STRAP ASSY,1/2 BRAIDED,18"	CELLXION	540216

NOTES:

1. ITEMS LISTED THAT DO NOT SHOW AN ITEM NUMBER HAVE TWO OR MORE LIKE MATERIALS CUT TO DIFFERENT LENGTHS AND ARE MERGED TO PROVIDE A TOTAL QUANTITY REQUIRED. THESE MERGED ITEMS ARE DETAILED IN THE CUT LIST TABLE SHOWN AFTER THE PARTS LIST.

DEPT CODES:

- 20 - CARPENTRY
30 - CONDUIT
40 - ELECTRICAL
50 - MECHANICAL
51 - DOORS
55 - HVAC
70 - TILE/FLOORING
75 - GENERATOR
90 - SHIPPING
95 - MULTI-TASK
99 - PACKING LIST
150 - INSTALLATION DEPT

THIS DRAWING IS THE CONFIDENTIAL PROPERTY AND CONTAINS TRADE SECRETS OF CELLXION, LLC. ALL DESIGN, LAYOUT AND FABRICATION DETAILS CONTAINED IN THIS DRAWING ARE CONSIDERED PROPRIETARY. ANY USE OF THESE DRAWINGS OR THE INFORMATION CONTAINED HEREIN FOR ANY REASON OTHER THAN AS EXPRESSLY AUTHORIZED BY SABRE INDUSTRIES, INC. IS STRICTLY PROHIBITED. CONTRACTORS PERFORMING AUTHORIZED WORK WITHIN THE SHELTER ARE AUTHORIZED TO USE THE INFORMATION CONTAINED WITHIN THE DRAWING FOR EQUIPMENT INSTALLATION PURPOSES. THIS DRAWING HAS BEEN DISTRIBUTED WITH THE UNDERSTANDING THAT ANYONE RECEIVING OR OTHERWISE OBTAINING POSSESSION OF IT WILL BE EXPRESSLY NOTIFIED OF ITS CONFIDENTIAL NATURE.

Sabre Industries
Building Systems by CellXion
5031 Hazel Jones Road
Bossier City, LA 71111
Voice: (318) 213-2900
Fax: (318) 213-2919
www.sabreindustries.com

CUSTOMER:

AT&T
MOBILITY

PROJECT:
08'-0" X 8'-0"
CONCRETE SHELTER
PARTS LIST
(CONTINUED)

FILENAME: SATN70	
SCALE: N.T.S.	TOLERANCE:
DRWN. BY: G. BRINKMAN	DATE: 01/04/18
CHK. BY: C. MITCHEL	DATE: 01/04/18
APP. BY: D. BRANNEN	DATE: 01/04/18
SHEET NO. 0-2	
DRAWING NO.: SATN70	REV.: 1R

SABRE INDUSTRIES(TM) PROPRIETARY DOCUMENT

PARTS LIST (CONTINUED)

ITEM	QTY	U/M	P/N	DEPT	DESCRIPTION	MFG	MFG P/N
126	1.0000	EA.	520199	55	HVAC,WPU,1T,3.6KW,MARV,ECUA12ACA	MARVAIR	ECUA12ACA-036
127	1.0000	EA.	410118	75	CONNECTOR,LFMC,1/2",90D,SEALTITE (OR EQUAL)	T&B	5372
128	1.0000	EA.	420048	90	LABEL,DATA,STANDARD SHELTER	CELLXION	420048
129	1.0000	EA.	480001	90	PLATE,DATA,ALUM,8"X12",GRAY	CELLXION	480001
130	1.0000	EA.	480355	95	SIGN,SITE LOG BOOK	EXCEL	D-005
131	1.0000	EA.	480356	95	SIGN,FCC LICENSE	EXCEL	ATT DC CUS 653
132	3.0000	FT.	504216	95	DOOR,WEATHERSTRIP,SPONGE NEOPRENE (OR EQUAL)	PEMKO	P491
133	1.0000	EA.	504222	95	DOOR,WEATHERSTRIPPING,303-TF-3670 (OR EQUAL)	PEMKO	303-TF-3670
134	1.0000	EA.	480087-02	99	PACKING KIT,W/8 FLAT TIE DOWN PLATE	CELLXION	480087-01
135	1.0000	EA.	480357	99	SIGN,AUTHORIZED PERSONNEL ONLY	EXCEL	D-006
136	1.0000	EA.	480358	99	SIGN,COMBO,PACK,DIESEL,GEN		
137	1.0000	EA.	504108	99	KEY,OPERATING BEST "A" CORE,GREEN		
138	1.0000	EA.	530117	99	SEAL,CABLE ENTRY,ROXTEC R75/4,3"PVC (PACKING LIST ITEM)	ROXTEC	5RKT810000032
139	1.0000	EA.	530147	99	WAVEGUIDE,ENTRY,GLAND,BOOT,ANDR	ROXTEC	WBG4-52
140	3.0000	EA.	530148	99	WAVEGUIDE,ENTRY,GLAND,ROXT	ROXTEC	CRL4"/5

- DEPT CODES:
- 20 - CARPENTRY
 - 30 - CONDUIT
 - 40 - ELECTRICAL
 - 50 - MECHANICAL
 - 51 - DOORS
 - 55 - HVAC
 - 70 - TILE/FLOORING
 - 75 - GENERATOR
 - 90 - SHIPPING
 - 95 - MULTI-TASK
 - 99 - PACKING LIST
 - 150 - INSTALLATION DEPT

THIS DRAWING IS THE CONFIDENTIAL PROPERTY AND CONTAINS TRADE SECRETS OF CELLXION, LLC. ALL DESIGN, LAYOUT AND FABRICATION DETAILS CONTAINED IN THIS DRAWING ARE CONSIDERED PROPRIETARY. ANY USE OF THESE DRAWINGS OR THE INFORMATION CONTAINED HEREIN FOR ANY REASON OTHER THAN AS EXPRESSLY AUTHORIZED BY SABRE INDUSTRIES, INC. IS STRICTLY PROHIBITED. CONTRACTORS PERFORMING AUTHORIZED WORK WITHIN THE SHELTER ARE AUTHORIZED TO USE THE INFORMATION CONTAINED WITHIN THE DRAWING FOR EQUIPMENT INSTALLATION PURPOSES. THIS DRAWING HAS BEEN DISTRIBUTED WITH THE UNDERSTANDING THAT ANYONE RECEIVING OR OTHERWISE OBTAINING POSSESSION OF IT WILL BE EXPRESSLY NOTIFIED OF ITS CONFIDENTIAL NATURE.

Sabre Industries

Building Systems by CellXion

5031 Hazel Jones Road
Bossier City, LA 71111
Voice: (318) 213-2900
Fax: (318) 213-2919
www.sabreindustries.com

CUSTOMER:

AT&T
MOBILITY

PROJECT:
08'-0" X 8'-0"
CONCRETE SHELTER
PARTS LIST
(CONTINUED)

FILENAME: SATN70	
SCALE: N.T.S.	TOLERANCE:
DRWN. BY: G. BRINKMAN	DATE: 01/04/18
CHK. BY: C. MITCHEL	DATE: 01/04/18
APP. BY: D. BRANNEN	DATE: 01/04/18
SHEET NO. 0-3	
DRAWING NO.: SATN70	REV.: 1R

NOTES:

- ITEMS LISTED THAT DO NOT SHOW AN ITEM NUMBER HAVE TWO OR MORE LIKE MATERIALS CUT TO DIFFERENT LENGTHS AND ARE MERGED TO PROVIDE A TOTAL QUANTITY REQUIRED. THESE MERGED ITEMS ARE DETAILED IN THE CUT LIST TABLE SHOWN AFTER THE PARTS LIST.

NOTE:
CUT LIST ITEM LENGTHS ARE ESTIMATED, CONFIRM
LENGTHS REQUIRED PRIOR TO ACTUALLY CUTTING PARTS.

CUT LIST				
ITEM	P/N	DESCRIPTION	CUT	PCS
19	430267	WIREWAY,GALV,4"X4"X24",W/O KO'S (OR EQUAL)	24"	1
20	430268	WIREWAY,GALV,4"X4"X48",W/O KO'S (OR EQUAL)	48"	1
21	430336	WIREWAY,GALV,4"X4"X12",W/O KO'S (OR EQUAL)	8"	2
26	510126	UNISTRUT,1 5/8" CHANNEL,P1000 GALV	18"	3
27	510126	UNISTRUT,1 5/8"CHANNEL,P1000 GALV	96"	12
29	400050	WIRE,#2 THHN,STRAND,GRN	48"	1
32	410111	CONDUIT,LFMC,3/4",SEALTITE (OR EQUAL)	60"	1
33	410111	CONDUIT,LFMC,3/4",SEALTITE (OR EQUAL)	48"	2
34	410111	CONDUIT,LFMC,3/4",SEALTITE (OR EQUAL)	120"	6
35	410112	CONDUIT,LFMC,1/2",SEALTITE (OR EQUAL)	60"	1
64	400030	WIRE, #6 THHN, STRAND, GRN	420"	1
66	400050	WIRE,#2 THHN,STRAND,GRN	24"	2
67	400050	WIRE,#2 THHN,STRAND,GRN	384"	1
68	400050	WIRE,#2 THHN,STRAND,GRN	12"	1
70	400099	WIRE,#2 SOLID COPPER,BARE,TINNED	216"	4
71	400099	WIRE,#2 SOLID COPPER,BARE,TINNED	54"	1
72	400099	WIRE,#2 SOLID COPPER,BARE,TINNED	24"	1
73	400099	WIRE,#2 SOLID COPPER,BARE,TINNED	14"	1
86	410441	CONDUIT,LFNC,1/2",SEALTITE	36"	2
87	410441	CONDUIT,LFNC,1/2",SEALTITE	12"	1
88	410441	CONDUIT,LFNC,1/2",SEALTITE	14"	1
89	410441	CONDUIT,LFNC,1/2",SEALTITE	54"	1
90	410441	CONDUIT,LFNC,1/2",SEALTITE	24"	1
91	410441	CONDUIT,LFNC,1/2",SEALTITE	62"	1
92	410441	CONDUIT,LFNC,1/2",SEALTITE	69"	1
93	410441	CONDUIT,LFNC,1/2",SEALTITE	80"	1
94	410441	CONDUIT,LFNC,1/2",SEALTITE	72"	1
97	510000	CABLE LADDER,12"X9'8 1/2",YELLOW ZI (OR EQUAL)	74 1/2"	1
98	510000	CABLE LADDER,12"X9'8 1/2",YELLOW ZI (OR EQUAL)	73 7/8"	1
99	510000	CABLE LADDER,12"X9'8 1/2",YELLOW ZI (OR EQUAL)	82"	2
100	510000	CABLE LADDER,12"X9'8 1/2",YELLOW ZI (OR EQUAL)	62 1/2"	1
118	504400	DOOR,DRIP CAP,NGF16A-48" (OR EQUAL)	40"	1
132	504216	DOOR,WEATHERSTRIP,SPONGE NEOPRENE (OR EQUAL)	36"	1

SHOP DRAWINGS (ELECTRICAL)		SHOP DRAWINGS (MECHANICAL)	
DWG #	DESCRIPTION	DWG #	DESCRIPTION
30-002	BOX TO BOX PENETRATION DETAIL	50-001	GROUND BAR MOUNTING INSTALLATION
30-004	BOX TO GFCI PENETRATION DETAIL	50-006	CABLE LADDER GROUNDING DETAILS (T-JUNCTION TWO SIDES)
30-007	THRU WALL PENETRATION RIGID NIPPLE DETAIL	50-008	CABLE LADDER SPLICE JUNCTION GROUNDING DETAILS
30-009	CONDUIT TO WIREWAY CONNECTION	50-013	GROUND TO DOOR FRAME
30-011	PLASTIC CAP INSTALLATION DETAIL	50-020	GROUND TO PERPENDICULAR CONDUIT
30-012	RIGID, CLOSE & CHASE NIPPLE APPLICATION	50-026	Y DROP INSTALLATION - #6 WIRE
30-015	ONE LAYER UNISTRUT INSTALLATION	50-030	#2 HALO TO #2 SOLID Y DROP
30-016	WIREWAY MOUNTING INSTALLATION DETAIL	50-034	GROUND TO HVAC GRILLE
30-017	CONDUIT STRAP-BACK INSTALLATION DETAIL	50-035	THRU WALL PENETRATION PVC PIPE @ 45°
30-019	CONDUIT STANDARD INTERIOR LIGHT FIXTURE DETAIL	50-038	GROUND TO WIREWAY
30-020	JUNCTION BOX MOUNTING DETAIL	50-042	WIRE STANDOFF INSTALLATION
30-022	HVAC THRU WALL PENETRATION DETAIL	50-070	LUG CRIMPING DETAIL
40-008	ELECTRICAL GROUND BONDING DETAIL	50-071	GROUND BAR HAT BRACKET INSTALLATION
40-010	TYPICAL WIRE SECURING AT LOADCENTER	50-075	MECHANICAL LUG TO STEEL CONNECTION - LOCKWASHER
40-011	HVAC THRU WALL CONDUIT PENETRATION	50-083	GROUND CLAMP USAGE DETAIL
40-012	WARNING LABEL PLACEMENT DETAILS	51-003	2 PIECE THRESHOLD INSTALLATION
40-013	FIRE PROTECTION CIRCUIT BREAKER INSTALLATION STANDARDS	51-006	DRIP CAP INSTALLATION
		51-007	DOOR LOCKGUARD INSTALLATION
		51-008	DOOR PULL HANDLE INSTALLATION
		51-009	DOOR HOLD OPEN INSTALLATION
		51-010	DOOR CLOSER INSTALLATION
		51-012	DOOR CANOPY INSTALLATION
		51-013	ID SIGN LOCATION
		51-014	DOOR HARDWARE INSTALLATION
		51-017	GROUND STRAP TO DOOR FRAME
		51-029	MAGNETIC DOOR CONTACT INSTALLATION
		51-034	DOOR WEATHER STRIP INSTALLATION
		51-040	DOOR FRAME IDENTIFICATION MATRIX
		52-003	STRAIGHT CLAMP INSTALLATION
		52-004	CORNER CLAMP INSTALLATION
		52-016	CABLE LADDER WALL BRACKET INSTALLATION
		52-017	CABLE LADDER DOG LEG INSTALLATION
		52-018	CABLE LADDER TO HANGER BRACKET INSTALLATION DETAIL
		52-019	CABLE LADDER INSTALLATION DETAIL (HANGER BRACKET)
		52-021	CABLE LADDER HANGER BRACKET ONE LAYER INSTALLATION
		55-001	HVAC BLOCKOUT SLEEVE INSTALLATION
		55-002	HVAC FINISH SLEEVE INSTALLATION
		55-003	HVAC MOUNTING ANGLE INSTALLATION DETAIL
		55-004	HVAC INSTALLATION DETAIL
		55-006	HVAC INSTALLATION AND CONNECTIONS
		55-010	HVAC DRIP CAP INSTALLATION
		70-001	TILE INSTALLATION DETAIL
		70-002	BASE MOLD INSTALLATION DETAIL
		70-003	VINYL TILE INSTALLATION PROCEDURE
		75-000	GENERATOR CONNECTION DRAWING LEGEND
		75-001	GENERATOR ANCHOR INSTALLATION
		80-001	1/2" PVC PIPE STANDOFF

THIS DRAWING IS THE CONFIDENTIAL PROPERTY AND CONTAINS TRADE SECRETS OF CELLIXION, LLC. ALL DESIGN, LAYOUT AND FABRICATION DETAILS CONTAINED IN THIS DRAWING ARE CONSIDERED PROPRIETARY. ANY USE OF THESE DRAWINGS OR THE INFORMATION CONTAINED HEREIN FOR ANY REASON OTHER THAN AS EXPRESSLY AUTHORIZED BY SABRE INDUSTRIES, INC. IS STRICTLY PROHIBITED. CONTRACTORS PERFORMING AUTHORIZED WORK WITHIN THE SHELTER ARE AUTHORIZED TO USE THE INFORMATION CONTAINED WITHIN THE DRAWING FOR EQUIPMENT INSTALLATION PURPOSES. THIS DRAWING HAS BEEN DISTRIBUTED WITH THE UNDERSTANDING THAT ANYONE RECEIVING OR OTHERWISE OBTAINING POSSESSION OF IT WILL BE EXPRESSLY NOTIFIED OF ITS CONFIDENTIAL NATURE.

Sabre Industries

Building Systems by Cellixion

5031 Hazel Jones Road
Bossier City, LA 71111
Voice: (318) 213-2900
Fax: (318) 213-2919
www.sabreindustries.com

CUSTOMER:

AT&T
MOBILITY

PROJECT:

08'-0" X 8'-0"
CONCRETE SHELTER
SHOP DRAWINGS &
CUT LIST

FILENAME:

SATN70

SCALE:

N.T.S.

TOLERANCE:

DRWN. BY:

G. BRINKMAN

DATE:

01/04/18

CHK. BY:

C. MITCHEL

DATE:

01/04/18

APP. BY:

D. BRANNEN

DATE:

01/04/18

SHEET NO.

0-4

DRAWING NO.:

SATN70

REV.:

1R

SABRE INDUSTRIES(TM) PROPRIETARY DOCUMENT

1/4/2018 4:55:19 PM, gbrinkman, Confidential

SABRE INDUSTRIES(TM) PROPRIETARY DOCUMENT

OPTIONAL COMPONENTS

OPT.	OPT. #	TAG #	QTY	U/M	PART #	DEPT	DESCRIPTION	MFG	MFG PART #	CUT	PCS
A	A1	1	1.00	EA	440193	30	SURGE ARRESTOR,RAY,NEMA 4	RAYCAP	DC12-48-60-25E		
		2	2.00	EA.	410292	30	CONNECTOR,LFMC,2",90°				
		3	2.00	EA.	410141	30	COUPLING,RIGID,2"				
		4	2.00	EA.	410258	30	CONNECTOR,LFMC,2",STRAIGHT,ST				
		5	1.00	FT.	410232	30	CONDUIT,LFMC,2",SEALTITE			12"	1
		6	7.67	FT.	510126	30	UNISTRUT,1 5/8" CHANNEL,P1000 GALV			46"	2
		7	1.00	EA.	410443	30	CONNECTOR,LFNC,1/2",STRAIGHT,ST				
		8	5.5	FT.	400030	50	WIRE,#6 THHN,STRAND,GRN			66"	1
		9	5.5	FT.	410441	50	CONDUIT,LFNC,1/2",SEALTITE			66"	1
		10	1.00	EA.	400307	50	LUG,2H,#4,GRY,3/8" BOLT,1" C/C	PANDUIT	LCCXF4-38D-L		
		11	30.00	FT.	401381	150	WIRE,#6,TELCOFLEX,GRAY,NO CLOTH		S/W #57158301	180"	2
		12	48.00	EA.	401380	150	LUG,2H,#6,BLU,#10STUD,5/8"C/C,WINDO	PANDUIT	LCDX6-10A-L		
	A2	1	2.00	EA.	170128	30	PIPE,GALV,2",CAP				
	A3	1	1.00	EA.	440193	30	SURGE ARRESTOR,RAY,NEMA 4	RAYCAP	DC12-48-60-25E		
		2	2.00	EA.	410292	30	CONNECTOR,LFMC,2",90°				
		3	2.00	EA.	410141	30	COUPLING,RIGID,2"				
		4	2.00	EA.	410258	30	CONNECTOR,LFMC,2",STRAIGHT,ST				
		5	1.00	FT.	410232	30	CONDUIT,LFMC,2",SEALTITE			12"	1
		6	7.67	FT.	510126	30	UNISTRUT,1 5/8" CHANNEL,P1000 GALV			46"	2
		7	1.00	EA.	410443	30	CONNECTOR,LFNC,1/2" STRAIGHT,ST				
		8	6.00	FT.	400030	50	WIRE,#6 THHN,STRAND,GRN			72"	1
		9	6.00	FT.	410441	50	CONDUIT,LFNC,1/2" SEALTITE			72"	1
		10	1.00	EA.	400307	50	LUG,2H,#4,GRY,3/8" BOLT,1" C/C				
		11	37.00	FT.	401381	150	WIRE,#6,TELCOFLEX,GRAY,NO CLOTH		S/W #57158301	222"	2
		12	48.00	EA.	401380	150	LUG,2H,#6,BLU,#10STUD,5/8" C/C,WINDO	PANDUIT	LCDX6-10A-L		
	A4	1	2.00	EA.	170128	30	PIPE,GALV,2",CAP				
	A5	1	1.00	EA.	440193	30	SURGE ARRESTOR,RAY,NEMA 4	RAYCAP	DC12-48-60-25E		
		2	2.00	EA.	410292	30	CONNECTOR,LFMC,2",90°				
		3	2.00	EA.	410141	30	COUPLING,RIGID,2"				
		4	2.00	EA.	410258	30	CONNECTOR,LFMC,2",STRAIGHT,ST				
		5	1.00	FT.	410232	30	CONDUIT,LFMC,2",SEALTITE			12"	1
		6	7.67	FT.	510126	30	UNISTRUT,1 5/8" CHANNEL,P1000 GALV			46"	2
		7	1.00	EA.	410443	30	CONNECTOR,LFNC,1/2" STRAIGHT,ST				
		8	2.00	FT.	400030	50	WIRE,#6 THHN,STRAND,GRN			24"	1
		9	2.00	FT.	410441	50	CONDUIT,LFNC,1/2" SEALTITE			24"	1
		10	1.00	EA.	400307	50	LUG,2H,#4,GRY,3/8" BOLT,1" C/C				
		11	25.00	FT.	401381	150	WIRE,#6,TELCOFLEX,GRAY,NO CLOTH		S/W #57158301	150"	2
		12	48.00	EA.	401380	150	LUG,2H,#6,BLU,#10STUD,5/8" C/C,WINDO	PANDUIT	LCDX6-10A-L		
	A6	1	2.00	EA.	170128	30	PIPE,GALV,2",CAP				
B	B1	1	---	---	----	----	NOT REQUIRED				
	B2	1	1.00	EA.	480614	99	STEP ASSEM,30"W,2 STEP,9.5 RISE				
C	C1	----	----	---	----	----	NOT REQUIRED				
	C2	1	1.00	EA.	TBD	95	GPS ANTENNA MOUNT				

SHELTER REQUIRES ONE OPTION NUMBER FROM EACH OPTION LISTED.

NOTE THAT SOME OPTION NUMBERS ARE A KIT W/ MULTIPLE PARTS.

OPTIONS ARE IDENTIFIED ON THE DRAWING BY THE OPTION LETTER ☒, BY
OPTION NUMBER XX , OR BY THE OPTION TAG NUMBER XX-X

THIS DRAWING IS THE CONFIDENTIAL PROPERTY AND CONTAINS TRADE SECRETS OF CELLIXION, LLC. ALL DESIGN, LAYOUT AND FABRICATION DETAILS CONTAINED IN THIS DRAWING ARE CONSIDERED PROPRIETARY. ANY USE OF THESE DRAWINGS OR THE INFORMATION CONTAINED HEREIN FOR ANY REASON OTHER THAN AS EXPRESSLY AUTHORIZED BY SABRE INDUSTRIES, INC. IS STRICTLY PROHIBITED. CONTRACTORS PERFORMING AUTHORIZED WORK WITHIN THE SHELTER ARE AUTHORIZED TO USE THE INFORMATION CONTAINED WITHIN THE DRAWING FOR EQUIPMENT INSTALLATION PURPOSES. THIS DRAWING HAS BEEN DISTRIBUTED WITH THE UNDERSTANDING THAT ANYONE RECEIVING OR OTHERWISE OBTAINING POSSESSION OF IT WILL BE EXPRESSLY NOTIFIED OF ITS CONFIDENTIAL NATURE.

Sabre Industries'
Building Systems by Cellixion
5031 Hazel Jones Road
Bossier City, LA 71111
Voice: (318) 213-2900
Fax: (318) 213-2919
www.sabreindustries.com

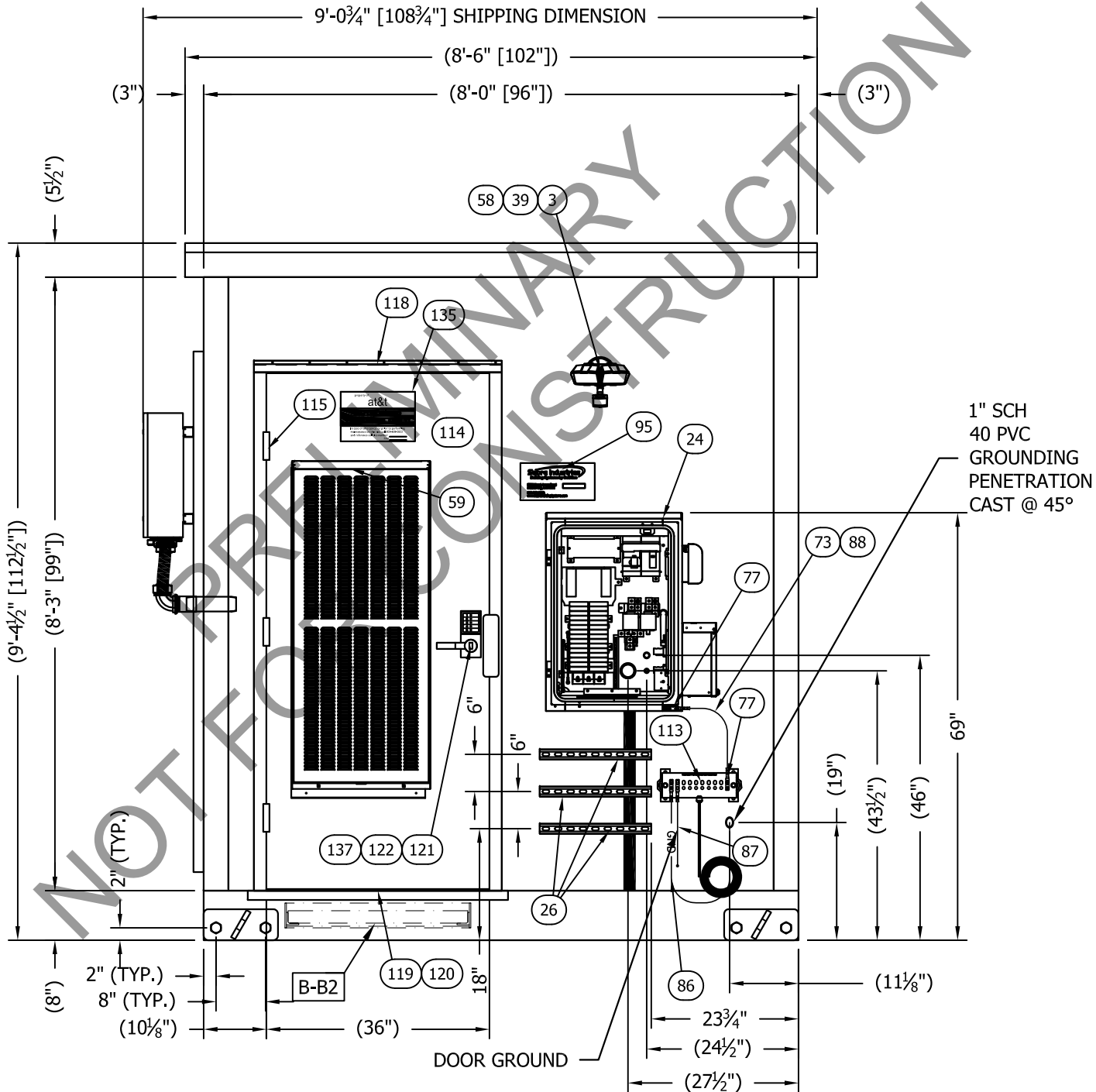
CUSTOMER:

AT&T
MOBILITY

PROJECT:
08'-0" X 8'-0"
CONCRETE SHELTER
OPTIONAL COMPONENTS
LIST

FILENAME: SATN70	
SCALE: N.T.S.	TOLERANCE:
DRWN. BY: G. BRINKMAN	DATE: 01/04/18
CHK. BY: C. MITCHEL	DATE: 01/04/18
APP. BY: D. BRANNEN	DATE: 01/04/18
SHEET NO. 0-5	
DRAWING NO.: SATN70	REV.: 1R

SUB-PARTS LIST							
ITEM	P/N	DESCRIPTION	CUT	ITEM	P/N	DESCRIPTION	CUT
26	510126	UNISTRUT,1 5/8" CHANNEL,P1000 GALV	18"	88	410441	CONDUIT,LFNC,1/2",SEALTITE	14"
73	400099	WIRE,#2 SOLID COPPER,BARE,TINNED	14"	118	504400	DOOR,DRIP CAP,NGF16A-48" (OR EQUAL)	40"
86	410441	CONDUIT,LFNC,1/2",SEALTITE	36"				
87	410441	CONDUIT,LFNC,1/2",SEALTITE	12"				



EXTERIOR ELEVATION "A"

THIS DRAWING IS THE CONFIDENTIAL PROPERTY AND CONTAINS TRADE SECRETS OF CELLIXION, LLC. ALL DESIGN, LAYOUT AND FABRICATION DETAILS CONTAINED IN THIS DRAWING ARE CONSIDERED PROPRIETARY. ANY USE OF THESE DRAWINGS OR THE INFORMATION CONTAINED HEREIN FOR ANY REASON OTHER THAN AS EXPRESSLY AUTHORIZED BY SABRE INDUSTRIES, INC. IS STRICTLY PROHIBITED. CONTRACTORS PERFORMING AUTHORIZED WORK WITHIN THE SHELTER ARE AUTHORIZED TO USE THE INFORMATION CONTAINED WITHIN THE DRAWING FOR EQUIPMENT INSTALLATION PURPOSES. THIS DRAWING HAS BEEN DISTRIBUTED WITH THE UNDERSTANDING THAT ANYONE RECEIVING OR OTHERWISE OBTAINING POSSESSION OF IT WILL BE EXPRESSLY NOTIFIED OF ITS CONFIDENTIAL NATURE.

Sabre Industries
Building Systems by Cellixion
5031 Hazel Jones Road
Bossier City, LA 71111
Voice: (318) 213-2900
Fax: (318) 213-2919
www.sabreindustries.com

CUSTOMER:

AT&T
MOBILITY

PROJECT:
08'-0" X 8'-0"
CONCRETE SHELTER
EXTERIOR ELEVATION
WALL "A"

FILENAME:
SATN70

SCALE:

1/2" = 1'-0"

DRWN. BY:

G. BRINKMAN

CHK. BY:

C. MITCHEL

APP. BY:

D. BRANNEN

TOLERANCE:

DATE:

01/04/18

DATE:

01/04/18

DATE:

01/04/18

SHEET NO.

1-0

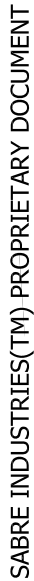
DRAWING NO.:

SATN70

REV.:

IR

SABRE INDUSTRIES(TM) PROPRIETARY DOCUMENT



SABRE INDUSTRIES(TM) PROPRIETARY DOCUMENT

SABRE INDUSTRIES (IM) PROPRIETARY DOCUMENT

SABRE INDUSTRIES (IM) PROPRIETARY DOCUMENT

CUSTOMER:

*AT&T
MOBILITY*

CUSTOMER:

*AT&T
MOBILITY*

PROJECT:
08'-0" X 8'-0"
CONCRETE SHELTER
EXTERIOR ELEVATION
WALL "C"

FILENAME:
SATN70

SCALE: $1/2" = 1'-0"$	TOLERANCE:
--------------------------	------------

DRWN. BY: <i>G. BRINKMAN</i>	DATE: <i>01/04/18</i>
---------------------------------	--------------------------

CHK. BY:	DATE:
C. MITCHELL	01/04/18

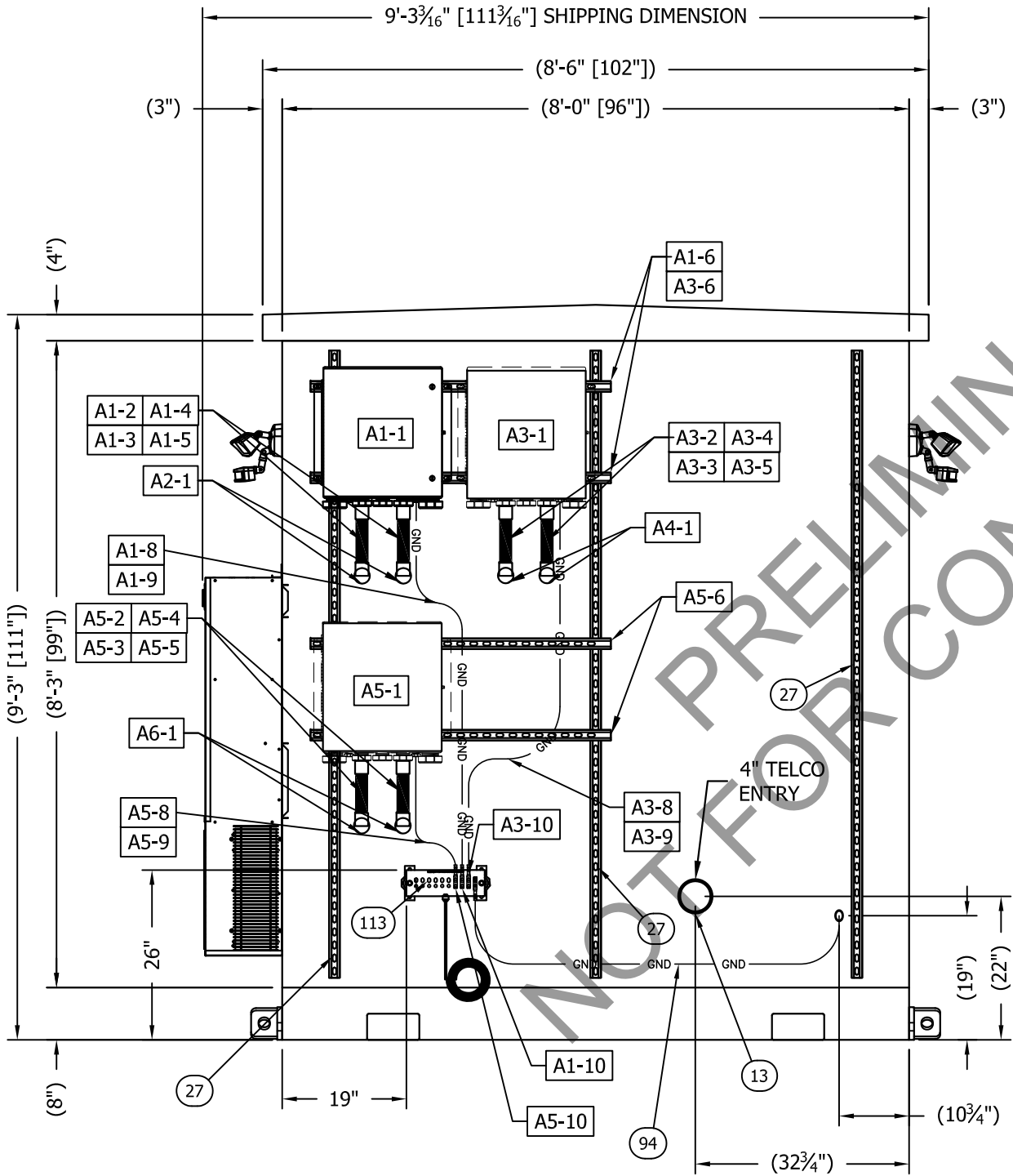
APP. BY:	DATE:
D. BRANNEN	01/04/18

D. DRAWING	01/07/10
SHEET NO.	
11	

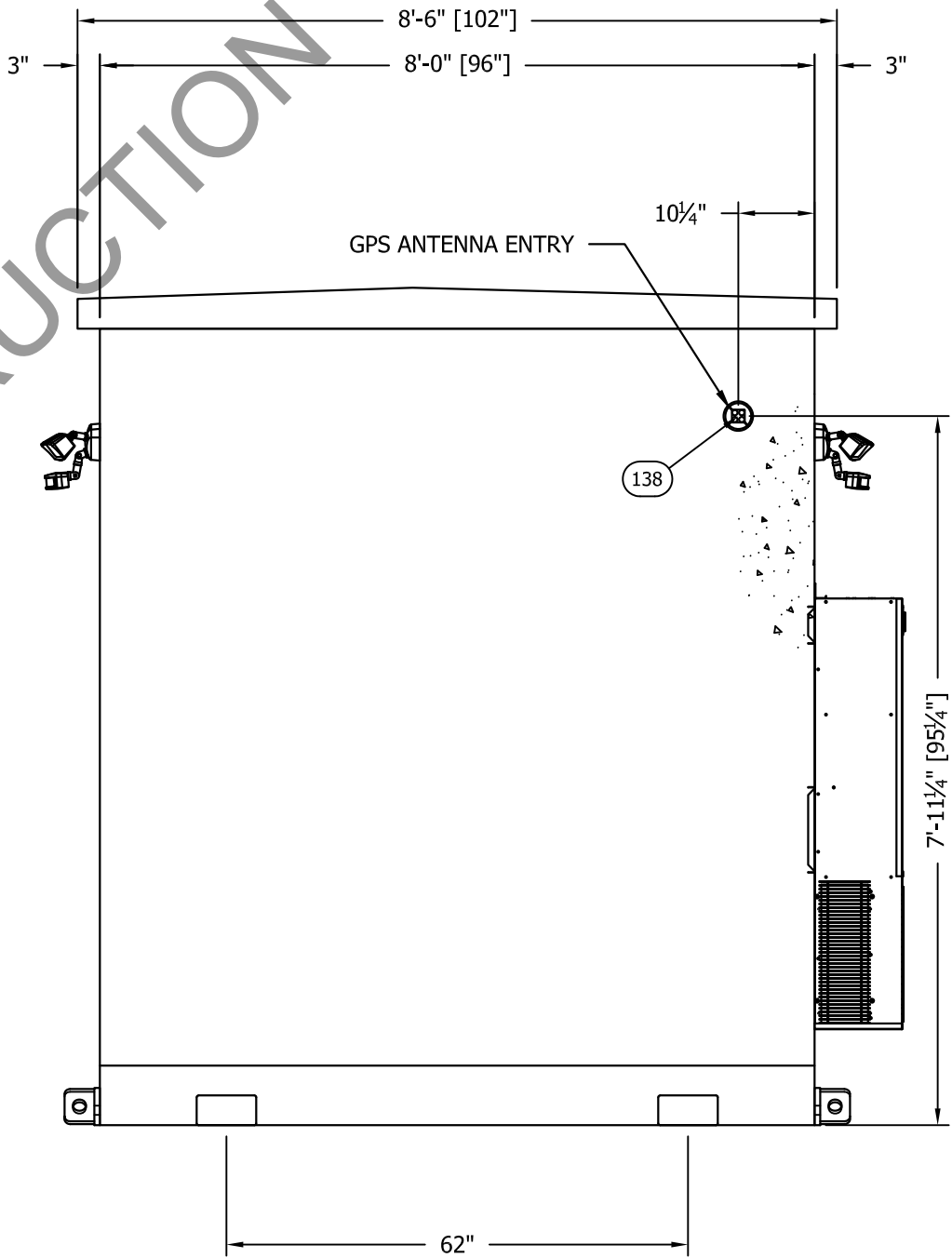
1-1	
DRAWING NO. :	REV. :

DRAWING NO.:	REV.:
SATN70	IR

SUB-PARTS LIST			
ITEM	P/N	DESCRIPTION	CUT
27	510126	UNISTRUT,1 5/8"CHANNEL,P1000 GALV	96"
94	410441	CONDUIT,LFNC,1/2",SEALTITE	72"



EXTERIOR ELEVATION "B"



EXTERIOR ELEVATION "D"

THIS DRAWING IS THE CONFIDENTIAL PROPERTY AND CONTAINS TRADE SECRETS OF CELLIXION, LLC. ALL DESIGN, LAYOUT AND FABRICATION DETAILS CONTAINED IN THIS DRAWING ARE CONSIDERED PROPRIETARY. ANY USE OF THESE DRAWINGS OR THE INFORMATION CONTAINED HEREIN FOR ANY REASON OTHER THAN AS EXPRESSLY AUTHORIZED BY SABRE INDUSTRIES, INC. IS STRICTLY PROHIBITED. CONTRACTORS PERFORMING AUTHORIZED WORK WITHIN THE SHELTER ARE AUTHORIZED TO USE THE INFORMATION CONTAINED WITHIN THE DRAWING FOR EQUIPMENT INSTALLATION PURPOSES. THIS DRAWING HAS BEEN DISTRIBUTED WITH THE UNDERSTANDING THAT ANYONE RECEIVING OR OTHERWISE OBTAINING POSSESSION OF IT WILL BE EXPRESSLY NOTIFIED OF ITS CONFIDENTIAL NATURE.

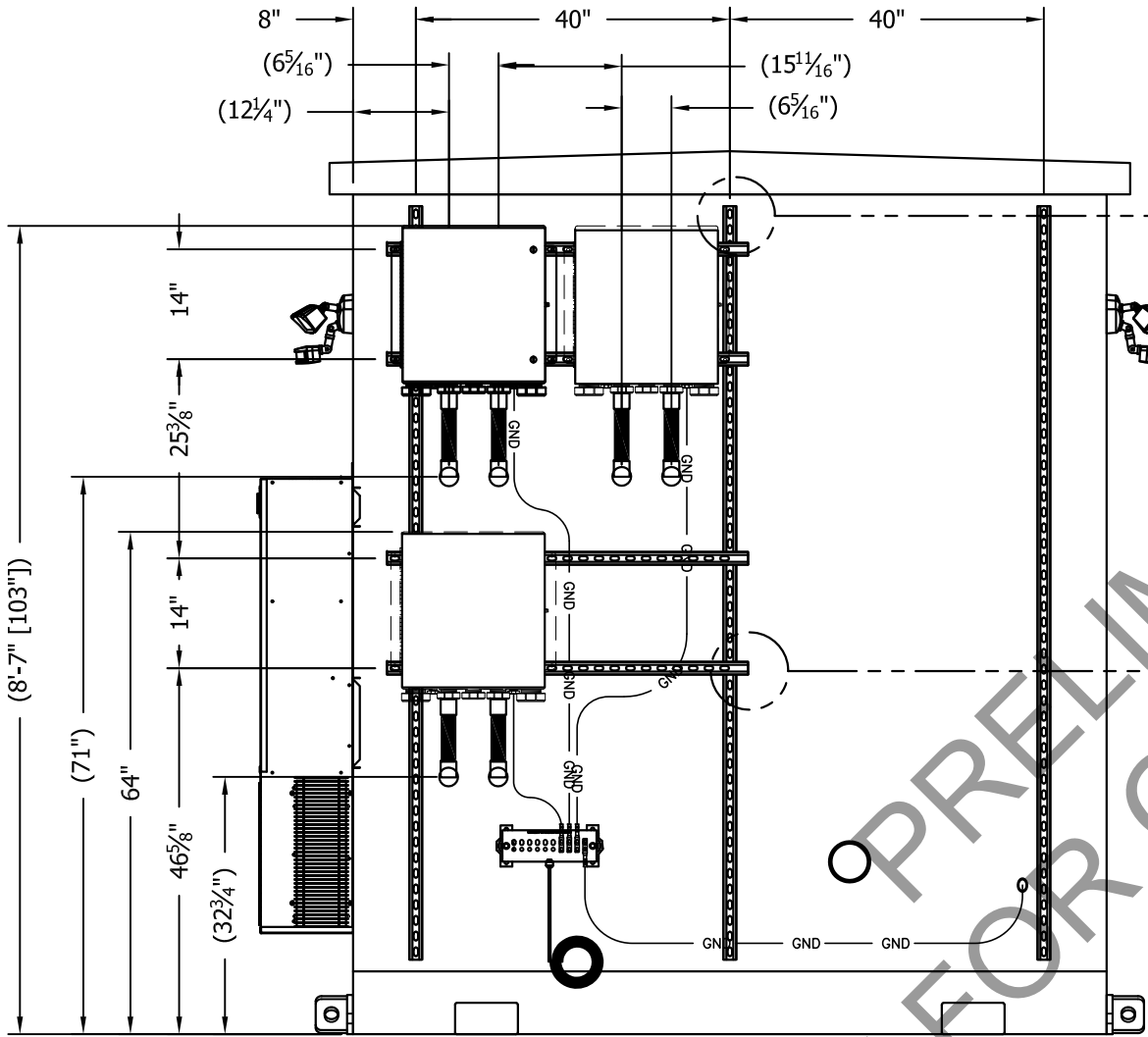
Sabre Industries
Building Systems by Cellixion
5031 Hazel Jones Road
Bossier City, LA 71111
Voice: (318) 213-2900
Fax: (318) 213-2919
www.sabreindustries.com

CUSTOMER:
**AT&T
MOBILITY**

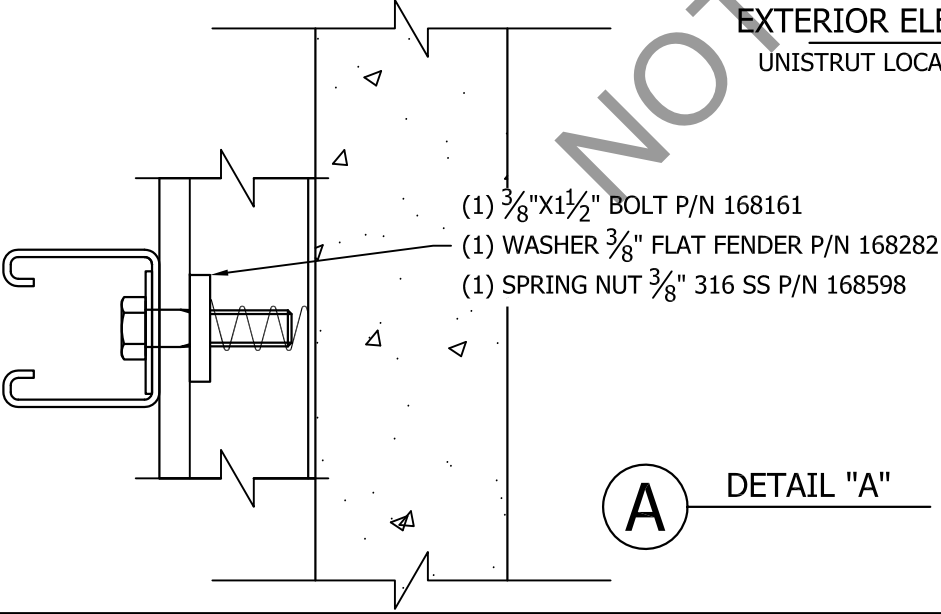
PROJECT:
**08'-0" X 8'-0"
CONCRETE SHELTER
EXTERIOR ELEVATION
WALLS "B" & "D"**

FILENAME: SATN70	
SCALE: 1/2" = 1'-0"	TOLERANCE:
DRWN. BY: G. BRINKMAN	DATE: 01/04/18
CHK. BY: C. MITCHEL	DATE: 01/04/18
APP. BY: D. BRANNEN	DATE: 01/04/18
SHEET NO. 1-2	
DRAWING NO.: SATN70	REV.: IR

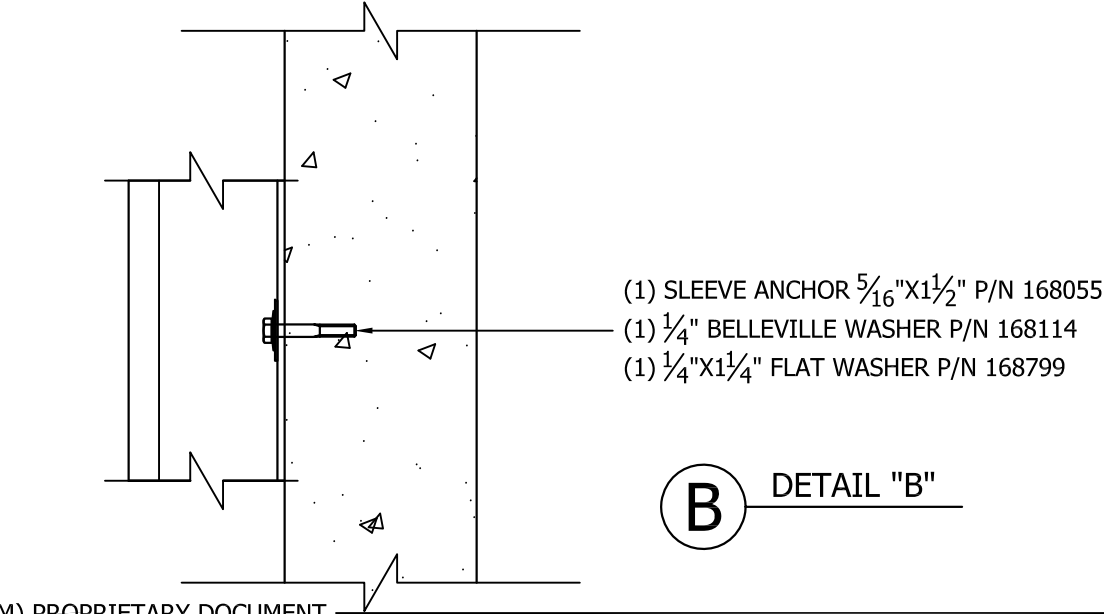
SUB-PARTS LIST			
ITEM	P/N	DESCRIPTION	CUT
27	510126	UNISTRUT,1 5/8"CHANNEL,P1000 GALV	96"



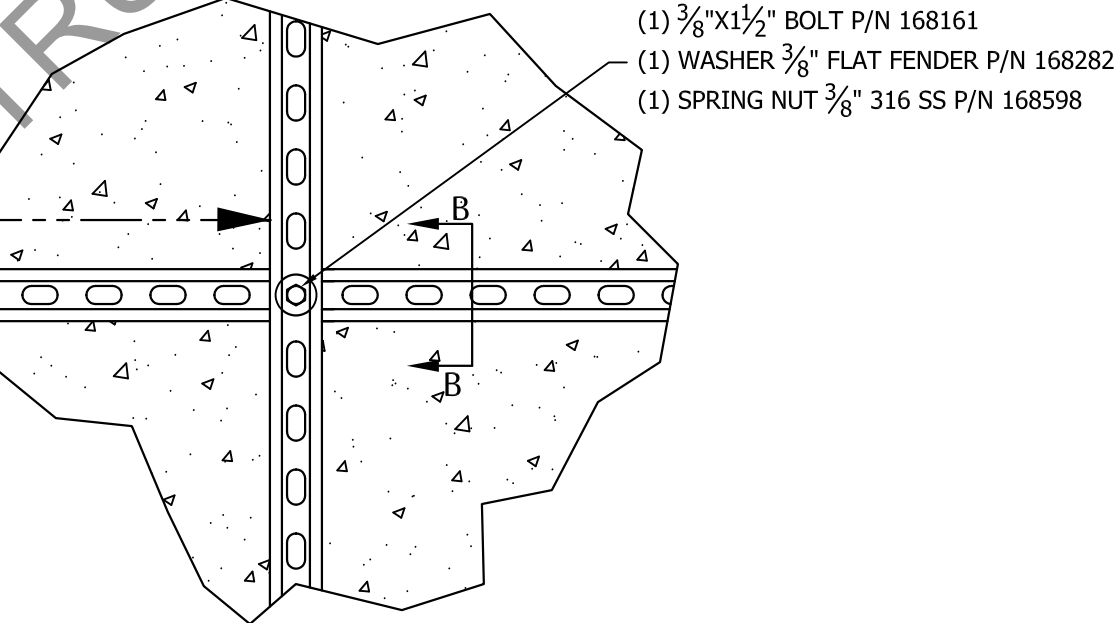
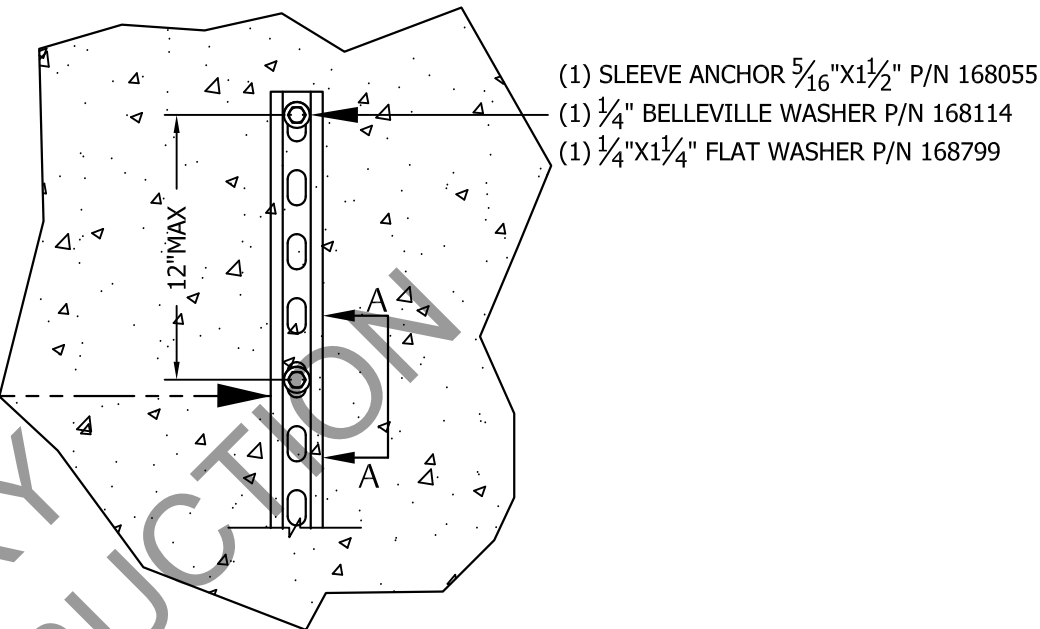
EXTERIOR ELEVATION "B"
UNISTRUT LOCATION DETAILS



A
DETAIL "A"



B
DETAIL "B"



THIS DRAWING IS THE CONFIDENTIAL PROPERTY AND CONTAINS TRADE SECRETS OF CELIXION, LLC. ALL DESIGN, LAYOUT AND FABRICATION DETAILS CONTAINED IN THIS DRAWING ARE CONSIDERED PROPRIETARY. ANY USE OF THESE DRAWINGS OR THE INFORMATION CONTAINED HEREIN FOR ANY REASON OTHER THAN AS EXPRESSLY AUTHORIZED BY SABRE INDUSTRIES, INC. IS STRICTLY PROHIBITED. CONTRACTORS PERFORMING AUTHORIZED WORK WITHIN THE SHELTER ARE AUTHORIZED TO USE THE INFORMATION CONTAINED WITHIN THE DRAWING FOR EQUIPMENT INSTALLATION PURPOSES. THIS DRAWING HAS BEEN DISTRIBUTED WITH THE UNDERSTANDING THAT ANYONE RECEIVING OR OTHERWISE OBTAINING POSSESSION OF IT WILL BE EXPRESSLY NOTIFIED OF ITS CONFIDENTIAL NATURE.

Sabre Industries

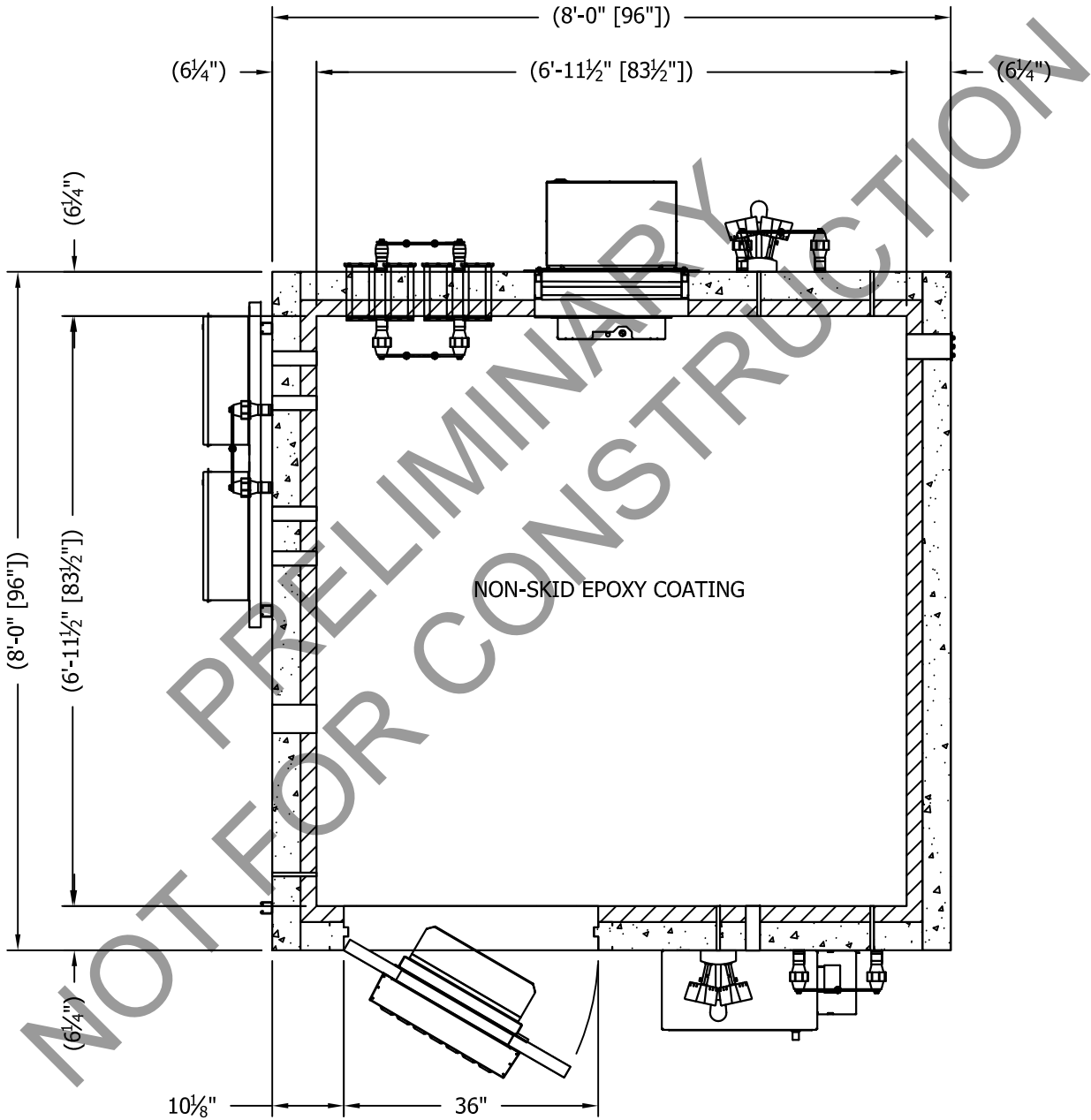
Building Systems by Celixion

5031 Hazel Jones Road
Bossier City, LA 71111
Voice: (318) 213-2900
Fax: (318) 213-2919
www.sabreindustries.com

CUSTOMER:
**AT&T
MOBILITY**

PROJECT:
**08'-0" X 8'-0"
CONCRETE SHELTER
EXTERIOR ELEVATION "B"
UNISTRUT LOCATIONS**

FILENAME: SATN70	
SCALE: 1/2" = 1'-0"	TOLERANCE:
DRWN. BY: G. BRINKMAN	DATE: 01/04/18
CHK. BY: C. MITCHEL	DATE: 01/04/18
APP. BY: D. BRANNEN	DATE: 01/04/18
SHEET NO. 1-3	
DRAWING NO.: SATN70	REV.: IR



FLOOR PLAN
64.00 SQ. FT. EXTERIOR BUILDING AREA
48.42 SQ. FT. INTERIOR BUILDING AREA

THIS DRAWING IS THE CONFIDENTIAL PROPERTY AND CONTAINS TRADE SECRETS OF CELLIXION, LLC. ALL DESIGN, LAYOUT AND FABRICATION DETAILS CONTAINED IN THIS DRAWING ARE CONSIDERED PROPRIETARY. ANY USE OF THESE DRAWINGS OR THE INFORMATION CONTAINED HEREIN FOR ANY REASON OTHER THAN AS EXPRESSLY AUTHORIZED BY SABRE INDUSTRIES, INC. IS STRICTLY PROHIBITED. CONTRACTORS PERFORMING AUTHORIZED WORK WITHIN THE SHELTER ARE AUTHORIZED TO USE THE INFORMATION CONTAINED WITHIN THE DRAWING FOR EQUIPMENT INSTALLATION PURPOSES. THIS DRAWING HAS BEEN DISTRIBUTED WITH THE UNDERSTANDING THAT ANYONE RECEIVING OR OTHERWISE OBTAINING POSSESSION OF IT WILL BE EXPRESSLY NOTIFIED OF ITS CONFIDENTIAL NATURE.

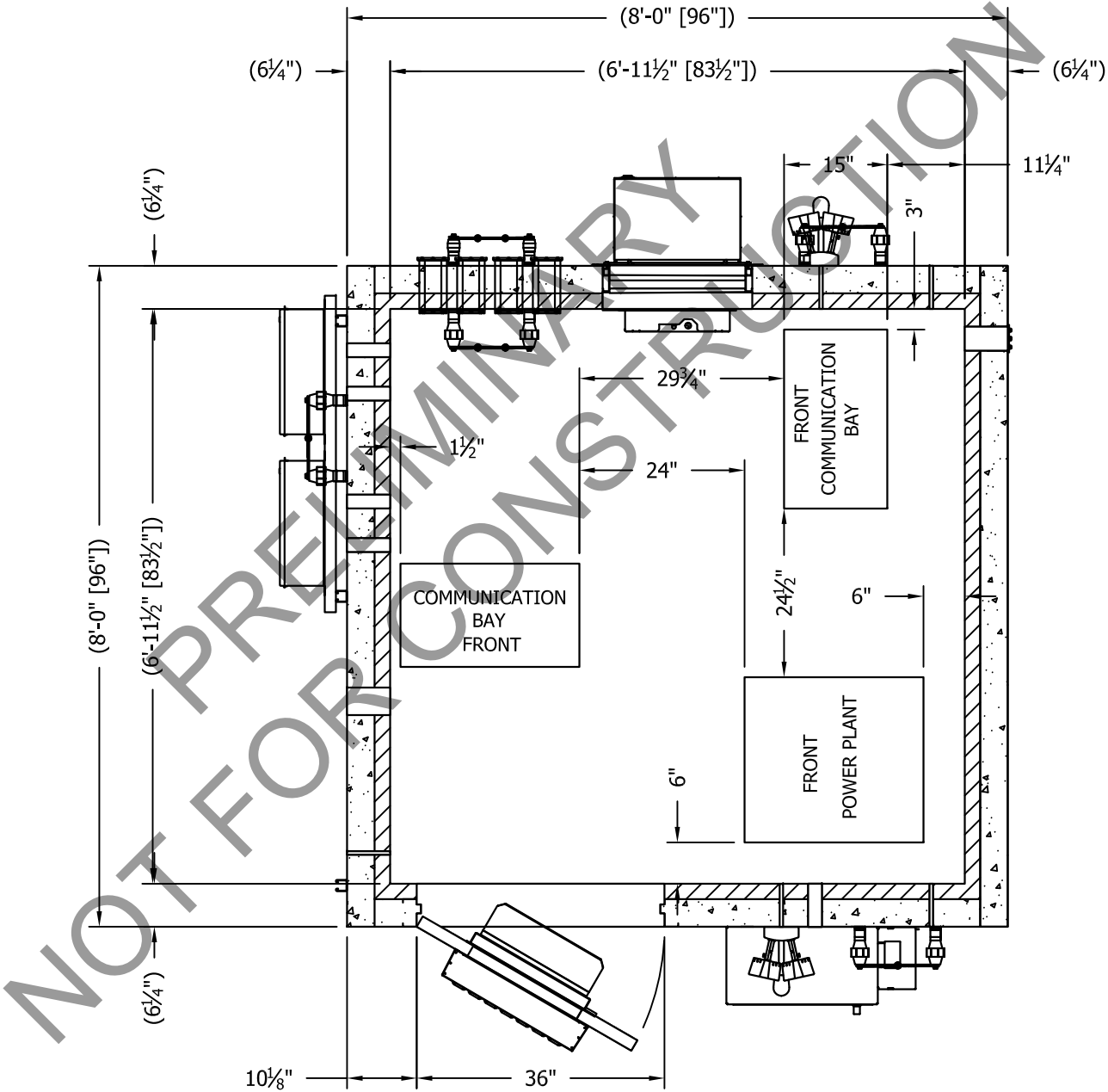
Sabre Industries
Building Systems by Cellixion
5031 Hazel Jones Road
Bossier City, LA 71111
Voice: (318) 213-2900
Fax: (318) 213-2919
www.sabreindustries.com

CUSTOMER:

*AT&T
MOBILITY*

PROJECT:
*08'-0" X 8'-0"
CONCRETE SHELTER
FLOOR PLAN*

FILENAME: SATN70	
SCALE: 1/2" = 1'-0"	TOLERANCE:
DRWN. BY: G. BRINKMAN	DATE: 01/04/18
CHK. BY: C. MITCHEL	DATE: 01/04/18
APP. BY: D. BRANNEN	DATE: 01/04/18
SHEET NO. 2-0	
DRAWING NO.: SATN70	REV.: IR



EQUIPMENT LAYOUT PLAN

THIS DRAWING IS THE CONFIDENTIAL PROPERTY AND CONTAINS TRADE SECRETS OF CELLIXION, LLC. ALL DESIGN, LAYOUT AND FABRICATION DETAILS CONTAINED IN THIS DRAWING ARE CONSIDERED PROPRIETARY. ANY USE OF THESE DRAWINGS OR THE INFORMATION CONTAINED HEREIN FOR ANY REASON OTHER THAN AS EXPRESSLY AUTHORIZED BY SABRE INDUSTRIES, INC. IS STRICTLY PROHIBITED. CONTRACTORS PERFORMING AUTHORIZED WORK WITHIN THE SHELTER ARE AUTHORIZED TO USE THE INFORMATION CONTAINED WITHIN THE DRAWING FOR EQUIPMENT INSTALLATION PURPOSES. THIS DRAWING HAS BEEN DISTRIBUTED WITH THE UNDERSTANDING THAT ANYONE RECEIVING OR OTHERWISE OBTAINING POSSESSION OF IT WILL BE EXPRESSLY NOTIFIED OF ITS CONFIDENTIAL NATURE.

Sabre Industries

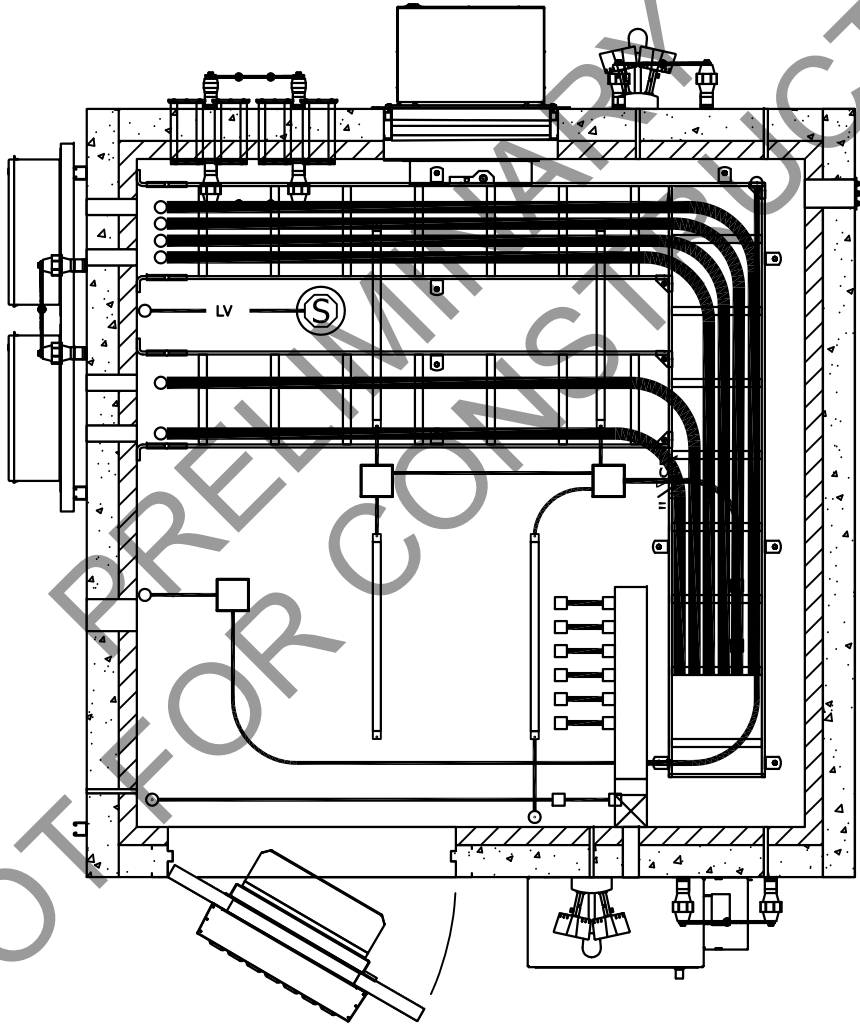
Building Systems by Cellixion

5031 Hazel Jones Road
Bossier City, LA 71111
Voice: (318) 213-2900
Fax: (318) 213-2919
www.sabreindustries.com

CUSTOMER:
**AT&T
MOBILITY**

PROJECT:
**08'-0" X 8'-0"
CONCRETE SHELTER
EQUIPMENT LAYOUT
PLAN**

FILENAME: SATN70	
SCALE: 1/2" = 1'-0"	TOLERANCE:
DRWN. BY: G. BRINKMAN	DATE: 01/04/18
CHK. BY: C. MITCHEL	DATE: 01/04/18
APP. BY: D. BRANNEN	DATE: 01/04/18
SHEET NO. 2-1	
DRAWING NO.: SATN70	REV.: IR



ROOM OVERLAY PLAN

THIS DRAWING IS THE CONFIDENTIAL PROPERTY AND CONTAINS TRADE SECRETS OF CELLIXION, LLC. ALL DESIGN, LAYOUT AND FABRICATION DETAILS CONTAINED IN THIS DRAWING ARE CONSIDERED PROPRIETARY. ANY USE OF THESE DRAWINGS OR THE INFORMATION CONTAINED HEREIN FOR ANY REASON OTHER THAN AS EXPRESSLY AUTHORIZED BY SABRE INDUSTRIES, INC. IS STRICTLY PROHIBITED. CONTRACTORS PERFORMING AUTHORIZED WORK WITHIN THE SHELTER ARE AUTHORIZED TO USE THE INFORMATION CONTAINED WITHIN THE DRAWING FOR EQUIPMENT INSTALLATION PURPOSES. THIS DRAWING HAS BEEN DISTRIBUTED WITH THE UNDERSTANDING THAT ANYONE RECEIVING OR OTHERWISE OBTAINING POSSESSION OF IT WILL BE EXPRESSLY NOTIFIED OF ITS CONFIDENTIAL NATURE.

Sabre Industries

Building Systems by Cellixion

5031 Hazel Jones Road
Bossier City, LA 71111
Voice: (318) 213-2900
Fax: (318) 213-2919
www.sabreindustries.com

CUSTOMER:
**AT&T
MOBILITY**

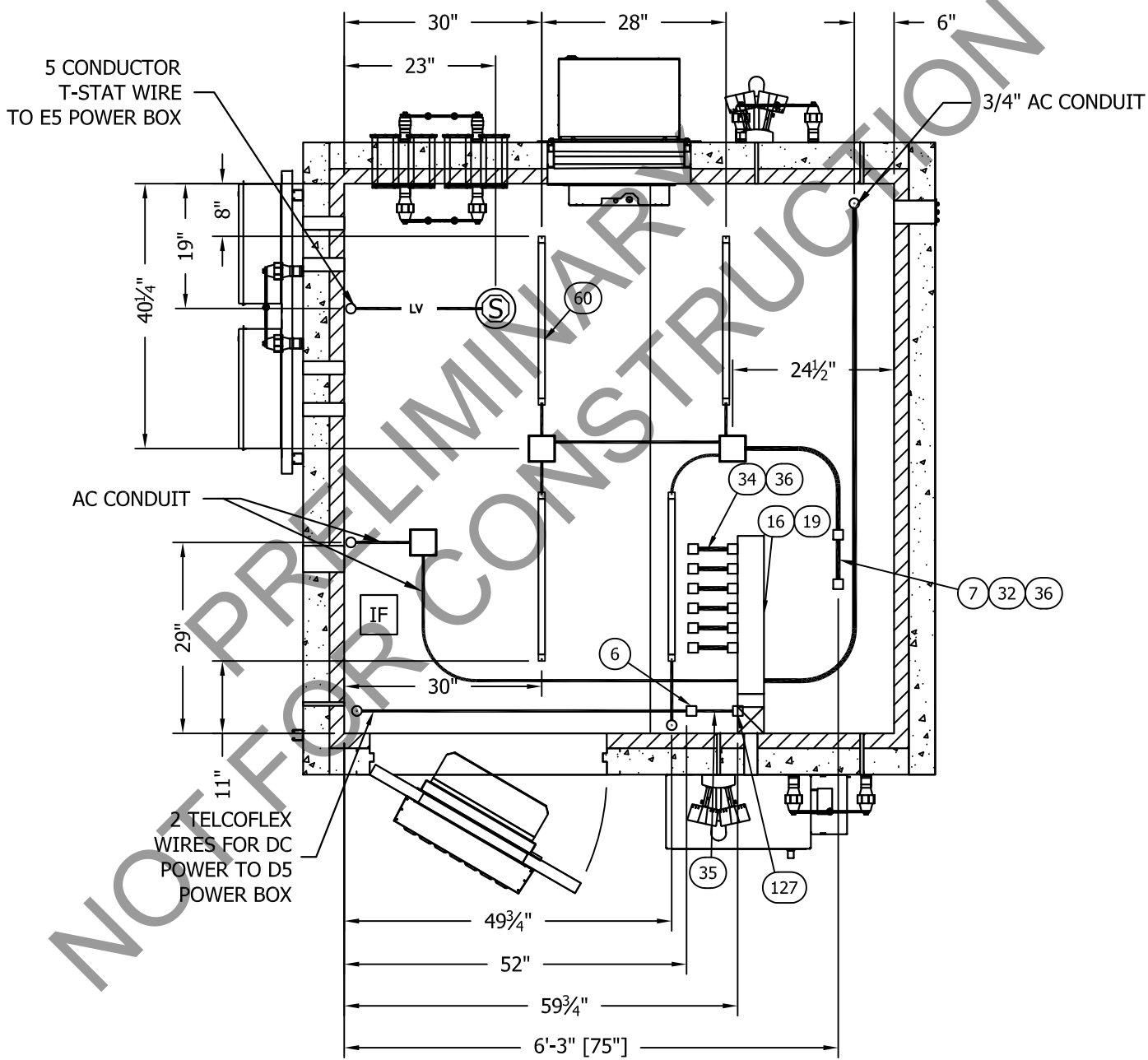
PROJECT:
**08'-0" X 8'-0"
CONCRETE SHELTER
ROOM OVERLAY PLAN**

FILENAME: SATN70	
SCALE: 1/2" = 1'-0"	TOLERANCE:
DRWN. BY: G. BRINKMAN	DATE: 01/04/18
CHK. BY: C. MITCHEL	DATE: 01/04/18
APP. BY: D. BRANNEN	DATE: 01/04/18
SHEET NO. 2-2	
DRAWING NO.: SATN70	REV.: IR

SUB-PARTS LIST			
ITEM	P/N	DESCRIPTION	CUT
19	430267	WIREWAY,GALV,4"X4"X24",W/O KO'S (OR EQUAL)	24"
32	410111	CONDUIT,LFMC,3/4",SEALTITE (OR EQUAL)	60"
34	410111	CONDUIT,LFMC,3/4",SEALTITE (OR EQUAL)	120"
35	410112	CONDUIT,LFMC,1/2",SEALTITE (OR EQUAL)	60"

LEGEND:

[IF] = INTERIOR FINISH STARTING PANEL



REFLECTED CEILING PLAN
(ELECTRICAL)

NOTES:
1. SEE REF DWG 108-015 FOR ELECTRICAL LEGENDS & STANDARD NOTES

THIS DRAWING IS THE CONFIDENTIAL PROPERTY AND CONTAINS TRADE SECRETS OF CELLXION, LLC. ALL DESIGN, LAYOUT AND FABRICATION DETAILS CONTAINED IN THIS DRAWING ARE CONSIDERED PROPRIETARY. ANY USE OF THESE DRAWINGS OR THE INFORMATION CONTAINED HEREIN FOR ANY REASON OTHER THAN AS EXPRESSLY AUTHORIZED BY SABRE INDUSTRIES, INC. IS STRICTLY PROHIBITED. CONTRACTORS PERFORMING AUTHORIZED WORK WITHIN THE SHELTER ARE AUTHORIZED TO USE THE INFORMATION CONTAINED WITHIN THE DRAWING FOR EQUIPMENT INSTALLATION PURPOSES. THIS DRAWING HAS BEEN DISTRIBUTED WITH THE UNDERSTANDING THAT ANYONE RECEIVING OR OTHERWISE OBTAINING POSSESSION OF IT WILL BE EXPRESSLY NOTIFIED OF ITS CONFIDENTIAL NATURE.

Sabre Industries

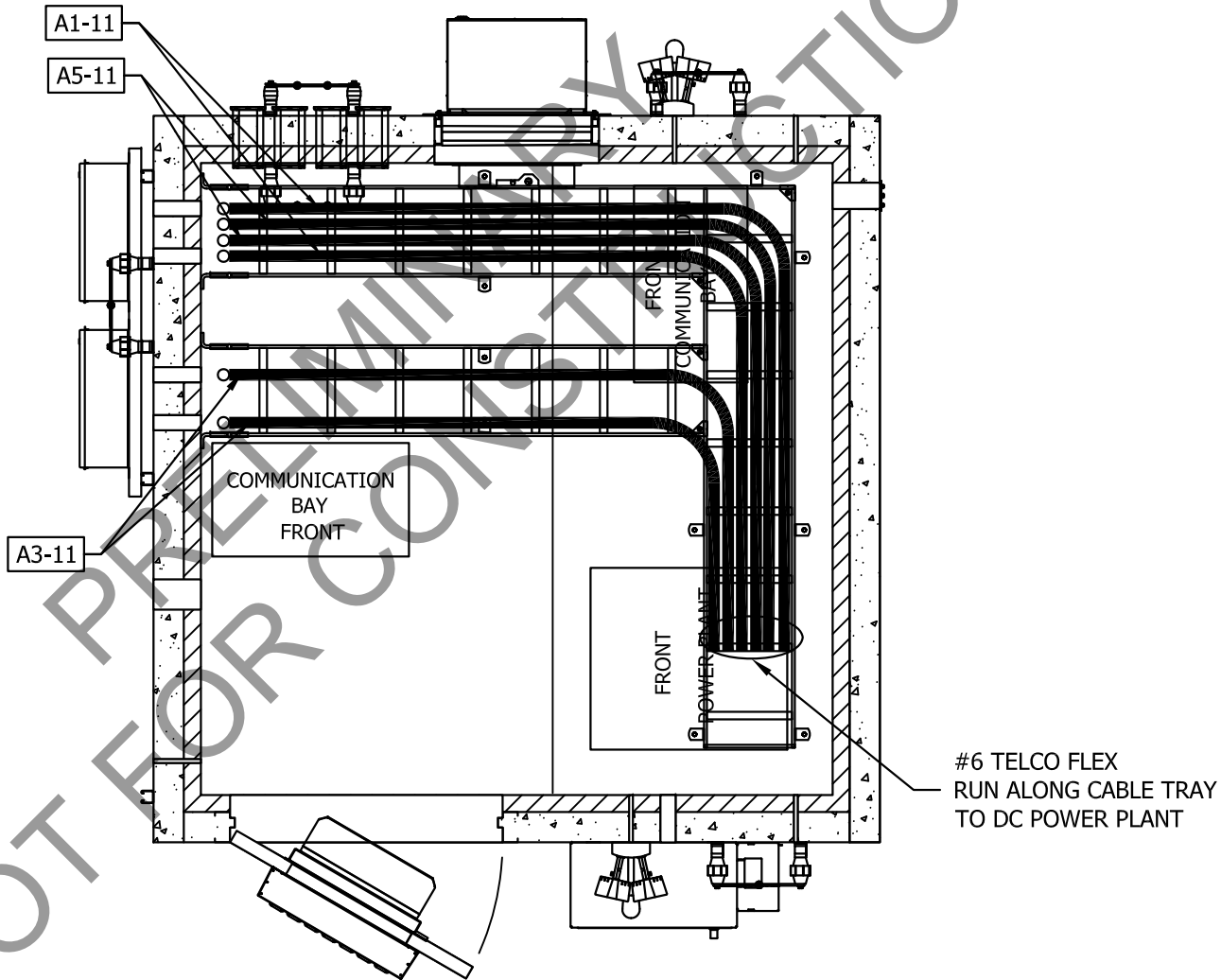
Building Systems by CellXion

5031 Hazel Jones Road
Bossier City, LA 71111
Voice: (318) 213-2900
Fax: (318) 213-2919
www.sabreindustries.com

CUSTOMER:
**AT&T
MOBILITY**

PROJECT:
**08'-0" X 8'-0"
CONCRETE SHELTER
REFLECTED CEILING
PLAN (ELECTRICAL)**

FILENAME: SATN70	
SCALE: 1/2" = 1'-0"	TOLERANCE:
DRWN. BY: G. BRINKMAN	DATE: 01/04/18
CHK. BY: C. MITCHEL	DATE: 01/04/18
APP. BY: D. BRANNEN	DATE: 01/04/18
SHEET NO. 3-0	
DRAWING NO.: SATN70	REV.: IR



REFLECTED CEILING PLAN
(RAYCAP
TELCOFLEX)

THIS DRAWING IS THE CONFIDENTIAL PROPERTY AND CONTAINS TRADE SECRETS OF CELLIXION, LLC. ALL DESIGN, LAYOUT AND FABRICATION DETAILS CONTAINED IN THIS DRAWING ARE CONSIDERED PROPRIETARY. ANY USE OF THESE DRAWINGS OR THE INFORMATION CONTAINED HEREIN FOR ANY REASON OTHER THAN AS EXPRESSLY AUTHORIZED BY SABRE INDUSTRIES, INC. IS STRICTLY PROHIBITED. CONTRACTORS PERFORMING AUTHORIZED WORK WITHIN THE SHELTER ARE AUTHORIZED TO USE THE INFORMATION CONTAINED WITHIN THE DRAWING FOR EQUIPMENT INSTALLATION PURPOSES. THIS DRAWING HAS BEEN DISTRIBUTED WITH THE UNDERSTANDING THAT ANYONE RECEIVING OR OTHERWISE OBTAINING POSSESSION OF IT WILL BE EXPRESSLY NOTIFIED OF ITS CONFIDENTIAL NATURE.

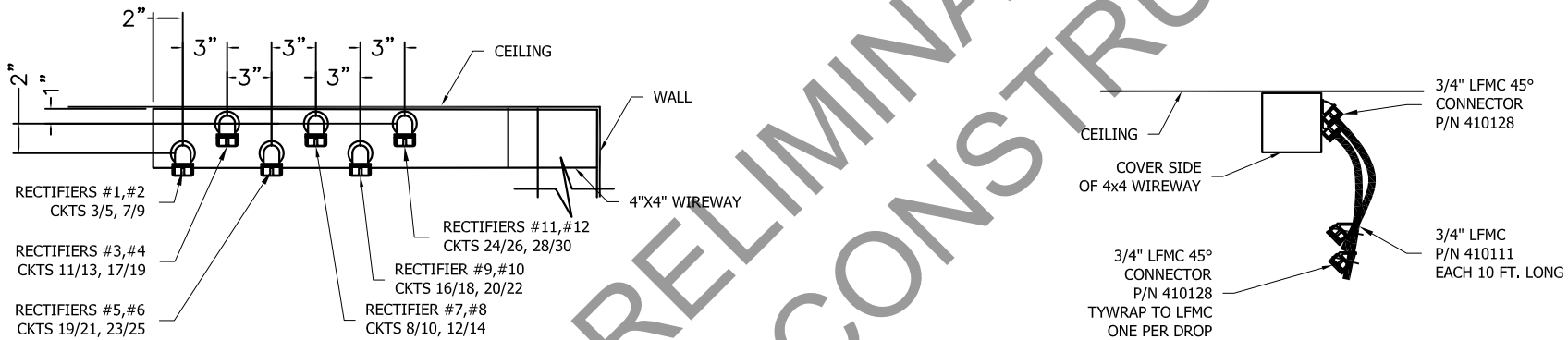
Sabre Industries
Building Systems by Cellixion
5031 Hazel Jones Road
Bossier City, LA 71111
Voice: (318) 213-2900
Fax: (318) 213-2919
www.sabreindustries.com

CUSTOMER:

AT&T
MOBILITY

PROJECT:
08'-0" X 8'-0"
CONCRETE SHELTER
REFLECTED CEILING
PLAN (RAYCAP TELCOFLEX)

FILENAME: SATN70	
SCALE: 1/2" = 1'-0"	TOLERANCE:
DRWN. BY: G. BRINKMAN	DATE: 01/04/18
CHK. BY: C. MITCHEL	DATE: 01/04/18
APP. BY: D. BRANNEN	DATE: 01/04/18
SHEET NO. 3-1	
DRAWING NO.: SATN70	REV.: IR



RECTIFIER DROP DETAILS

THIS DRAWING IS THE CONFIDENTIAL PROPERTY AND CONTAINS TRADE SECRETS OF CELLIXION, LLC. ALL DESIGN, LAYOUT AND FABRICATION DETAILS CONTAINED IN THIS DRAWING ARE CONSIDERED PROPRIETARY. ANY USE OF THESE DRAWINGS OR THE INFORMATION CONTAINED HEREIN FOR ANY REASON OTHER THAN AS EXPRESSLY AUTHORIZED BY SABRE INDUSTRIES, INC. IS STRICTLY PROHIBITED. CONTRACTORS PERFORMING AUTHORIZED WORK WITHIN THE SHELTER ARE AUTHORIZED TO USE THE INFORMATION CONTAINED WITHIN THE DRAWING FOR EQUIPMENT INSTALLATION PURPOSES. THIS DRAWING HAS BEEN DISTRIBUTED WITH THE UNDERSTANDING THAT ANYONE RECEIVING OR OTHERWISE OBTAINING POSSESSION OF IT WILL BE EXPRESSLY NOTIFIED OF ITS CONFIDENTIAL NATURE.

Sabre Industries
Building Systems by Cellixion
5031 Hazel Jones Road
Bossier City, LA 71111
Voice: (318) 213-2900
Fax: (318) 213-2919
www.sabreindustries.com

CUSTOMER:



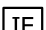
AT&T
MOBILITY

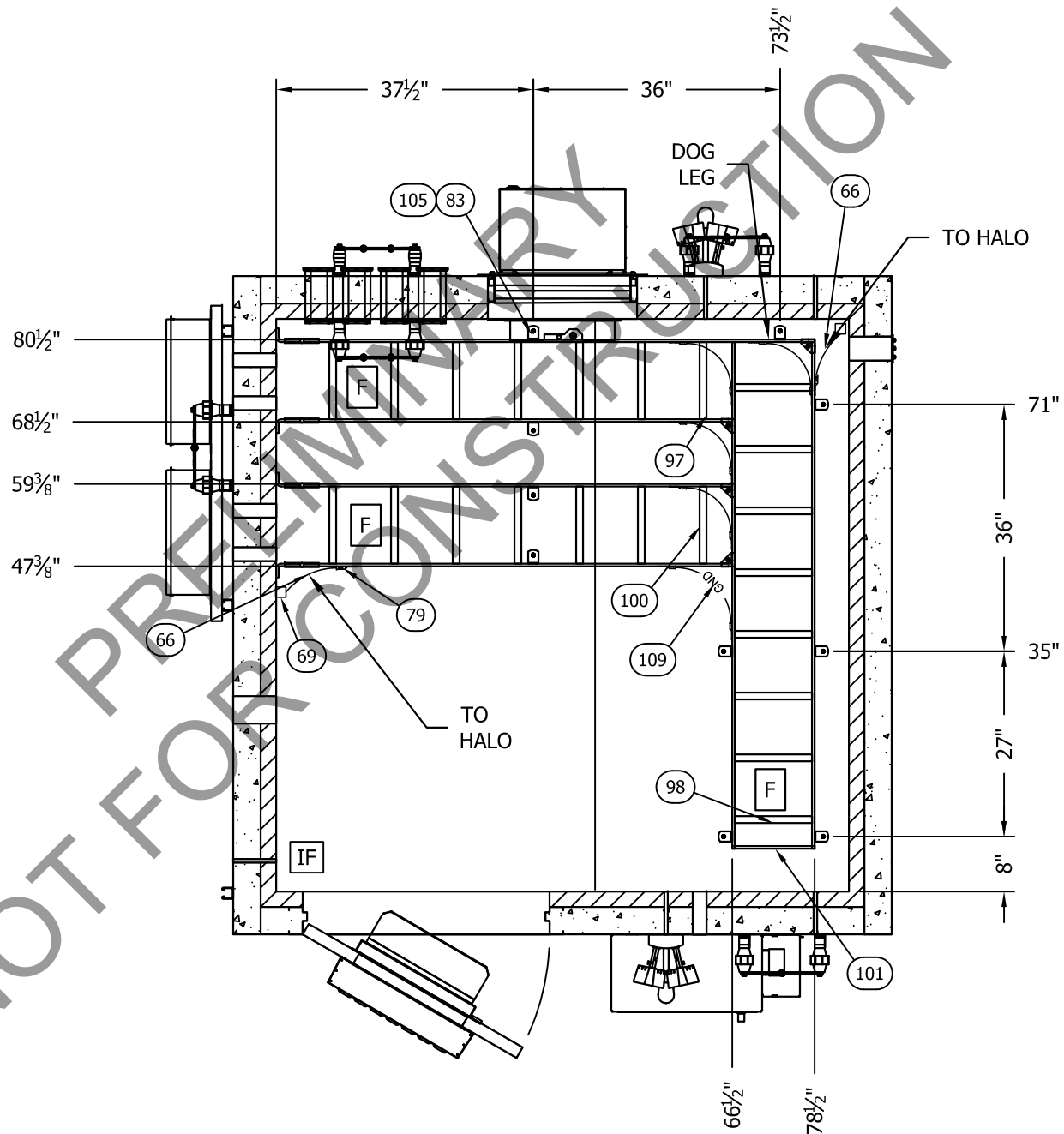
PROJECT:
08'-0" X 8'-0"
CONCRETE SHELTER
REFLECTED CEILING PLAN
(ELECTRICAL) DETAILS

FILENAME: SATN70	
SCALE: N.T.S.	TOLERANCE:
DRWN. BY: G. BRINKMAN	DATE: 01/04/18
CHK. BY: C. MITCHEL	DATE: 01/04/18
APP. BY: D. BRANNEN	DATE: 01/04/18
SHEET NO. 3-2	
DRAWING NO.: SATN70	REV.: IR

SUB-PARTS LIST			
ITEM	P/N	DESCRIPTION	CUT
66	400050	WIRE, #2 THHN, STRAND, GRN	24"
97	510000	CABLE LADDER, 12"X9'8 1/2", YELLOW ZI (OR EQUAL)	74 1/2"
98	510000	CABLE LADDER, 12"X9'8 1/2", YELLOW ZI (OR EQUAL)	73 7/8"
100	510000	CABLE LADDER, 12"X9'8 1/2", YELLOW ZI (OR EQUAL)	62 1/2"

LEGEND:

-  = CABLE LADDER SPLICE LOCATION
-  = CABLE LADDER FACTORY CUT END
-  = INTERIOR FINISH STARTING PANEL



REFLECTED CEILING PLAN
(MECHANICAL)

NOTES:

1. CABLE TRAY TO BE MOUNTED 7'-2 1/2" (85 1/2") A. F. F.

THIS DRAWING IS THE CONFIDENTIAL PROPERTY AND CONTAINS TRADE SECRETS OF CELLIXION, LLC. ALL DESIGN, LAYOUT AND FABRICATION DETAILS CONTAINED IN THIS DRAWING ARE CONSIDERED PROPRIETARY. ANY USE OF THESE DRAWINGS OR THE INFORMATION CONTAINED HEREIN FOR ANY REASON OTHER THAN AS EXPRESSLY AUTHORIZED BY SABRE INDUSTRIES, INC. IS STRICTLY PROHIBITED. CONTRACTORS PERFORMING AUTHORIZED WORK WITHIN THE SHELTER ARE AUTHORIZED TO USE THE INFORMATION CONTAINED WITHIN THE DRAWING FOR EQUIPMENT INSTALLATION PURPOSES. THIS DRAWING HAS BEEN DISTRIBUTED WITH THE UNDERSTANDING THAT ANYONE RECEIVING OR OTHERWISE OBTAINING POSSESSION OF IT WILL BE EXPRESSLY NOTIFIED OF ITS CONFIDENTIAL NATURE.

Sabre Industries
Building Systems by Cellixion
5031 Hazel Jones Road
Bossier City, LA 71111
Voice: (318) 213-2900
Fax: (318) 213-2919
www.sabreindustries.com

CUSTOMER:

AT&T
MOBILITY

PROJECT:
08'-0" X 8'-0"
CONCRETE SHELTER
REFLECTED CEILING
PLAN (MECHANICAL)

FILENAME:

SATN70

SCALE:

1/2" = 1'-0"

TOLERANCE:

DRWN. BY:

G. BRINKMAN

DATE:

01/04/18

CHK. BY:

C. MITCHEL

DATE:

01/04/18

APP. BY:

D. BRANNEN

DATE:

01/04/18

SHEET NO.

3-3

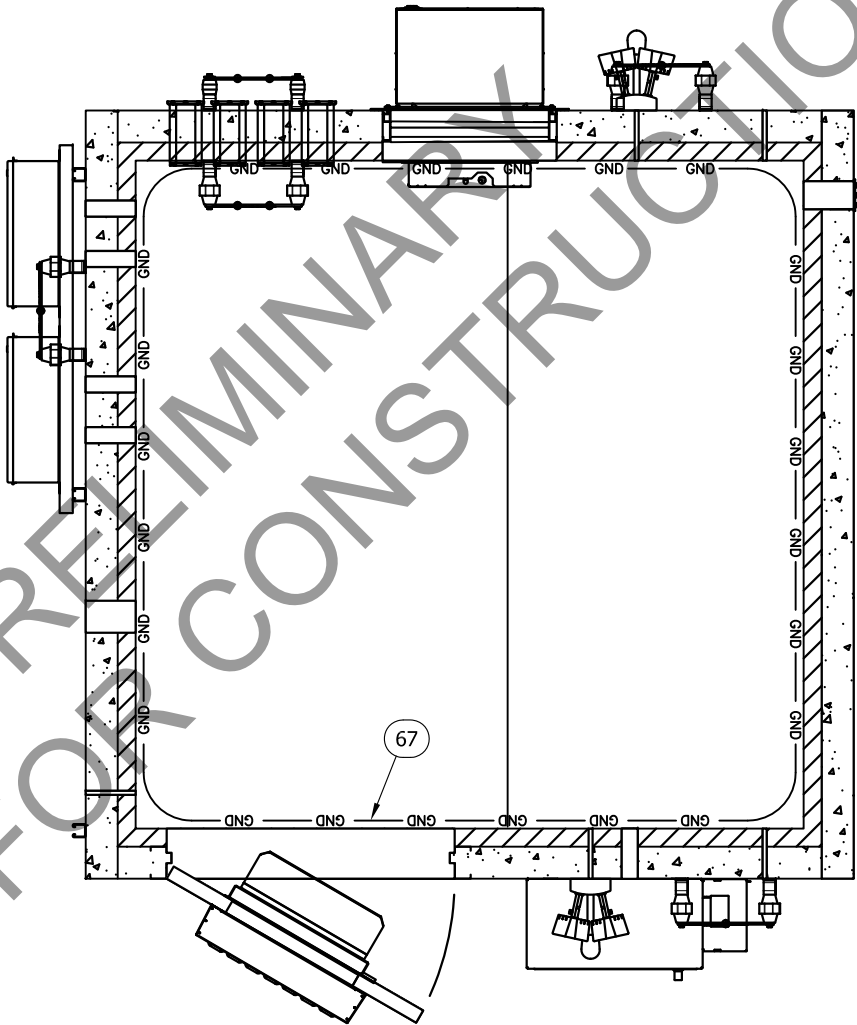
DRAWING NO.:

SATN70

REV.:

IR

SUB-PARTS LIST			
ITEM	P/N	DESCRIPTION	CUT
67	400050	WIRE,#2 THHN,STRAND,GRN	384"



NOTE:

- HALO ATTACHED TO CEILING WITH WIRE STANDOFFS.
- ALL GROUND DROPS AND EQUIPMENT GROUNDING ATTACH TO HALO EXCEPT AS NOTED ON DRAWING.

REFLECTED CEILING PLAN
(HALO AND GENERATOR GROUNDING)

THIS DRAWING IS THE CONFIDENTIAL PROPERTY AND CONTAINS TRADE SECRETS OF CELLXION, LLC. ALL DESIGN, LAYOUT AND FABRICATION DETAILS CONTAINED IN THIS DRAWING ARE CONSIDERED PROPRIETARY. ANY USE OF THESE DRAWINGS OR THE INFORMATION CONTAINED HEREIN FOR ANY REASON OTHER THAN AS EXPRESSLY AUTHORIZED BY SABRE INDUSTRIES, INC. IS STRICTLY PROHIBITED. CONTRACTORS PERFORMING AUTHORIZED WORK WITHIN THE SHELTER ARE AUTHORIZED TO USE THE INFORMATION CONTAINED WITHIN THE DRAWING FOR EQUIPMENT INSTALLATION PURPOSES. THIS DRAWING HAS BEEN DISTRIBUTED WITH THE UNDERSTANDING THAT ANYONE RECEIVING OR OTHERWISE OBTAINING POSSESSION OF IT WILL BE EXPRESSLY NOTIFIED OF ITS CONFIDENTIAL NATURE.

Sabre Industries
Building Systems by CellXion
5031 Hazel Jones Road
Bossier City, LA 71111
Voice: (318) 213-2900
Fax: (318) 213-2919
www.sabreindustries.com

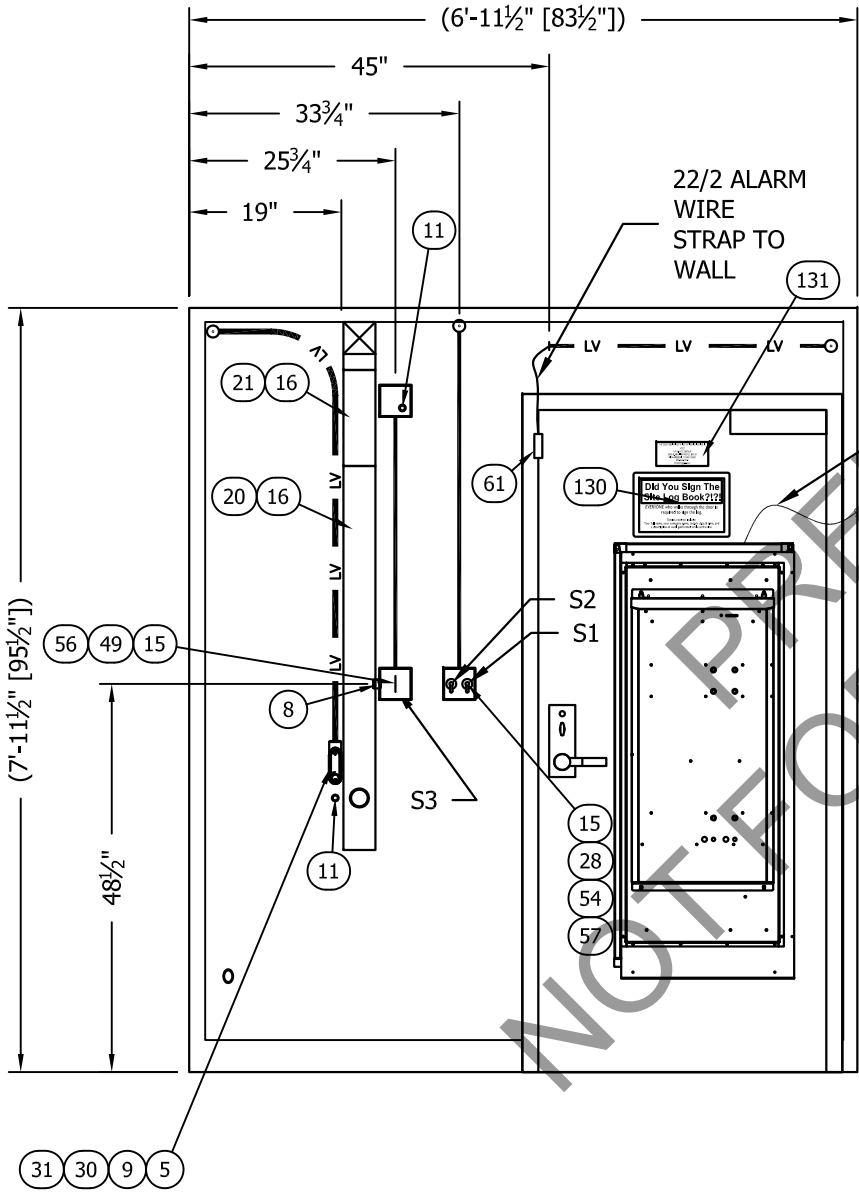
CUSTOMER:

AT&T
MOBILITY

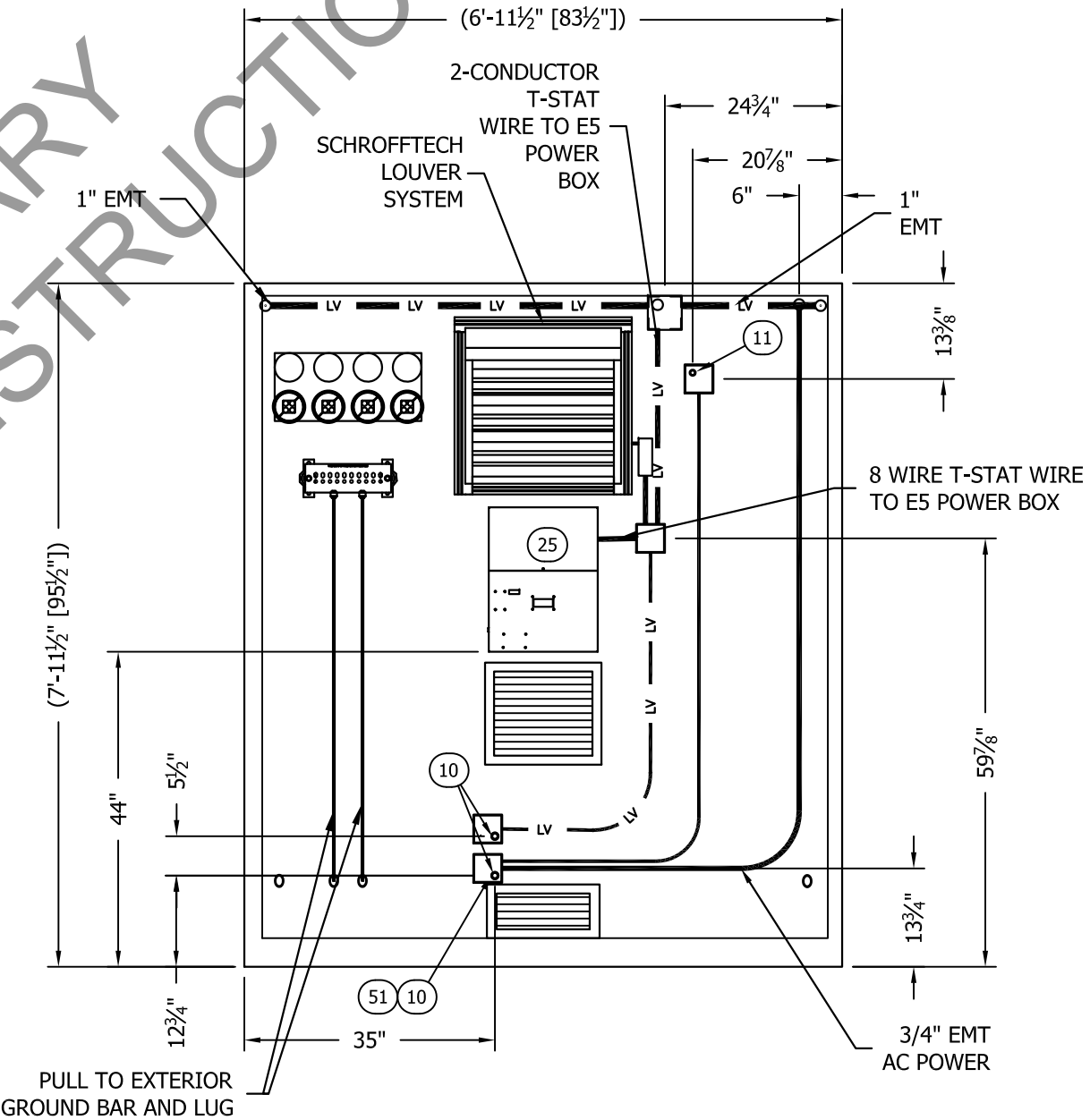
PROJECT:
08'-0" X 8'-0"
CONCRETE SHELTER
REFLECTED CEILING
PLAN (HALO & GEN GND)

FILENAME: SATN70	
SCALE: 1/2" = 1'-0"	TOLERANCE:
DRWN. BY: G. BRINKMAN	DATE: 01/04/18
CHK. BY: C. MITCHEL	DATE: 01/04/18
APP. BY: D. BRANNEN	DATE: 01/04/18
SHEET NO. 3-4	
DRAWING NO.: SATN70	REV.: IR

SUB-PARTS LIST			
ITEM	P/N	DESCRIPTION	CUT
20	430268	WIREWAY,GALV,4"X4"X48",W/O KO'S (OR EQUAL)	48"
21	430336	WIREWAY,GALV,4"X4"X12",W/O KO'S (OR EQUAL)	8"



INTERIOR ELEVATION "A"
(ELECTRICAL)



INTERIOR ELEVATION "C"
(ELECTRICAL)

THIS DRAWING IS THE CONFIDENTIAL PROPERTY AND CONTAINS TRADE SECRETS OF CELLIXION, LLC. ALL DESIGN, LAYOUT AND FABRICATION DETAILS CONTAINED IN THIS DRAWING ARE CONSIDERED PROPRIETARY. ANY USE OF THESE DRAWINGS OR THE INFORMATION CONTAINED HEREIN FOR ANY REASON OTHER THAN AS EXPRESSLY AUTHORIZED BY SABRE INDUSTRIES, INC. IS STRICTLY PROHIBITED. CONTRACTORS PERFORMING AUTHORIZED WORK WITHIN THE SHELTER ARE AUTHORIZED TO USE THE INFORMATION CONTAINED WITHIN THE DRAWING FOR EQUIPMENT INSTALLATION PURPOSES. THIS DRAWING HAS BEEN DISTRIBUTED WITH THE UNDERSTANDING THAT ANYONE RECEIVING OR OTHERWISE OBTAINING POSSESSION OF IT WILL BE EXPRESSLY NOTIFIED OF ITS CONFIDENTIAL NATURE.

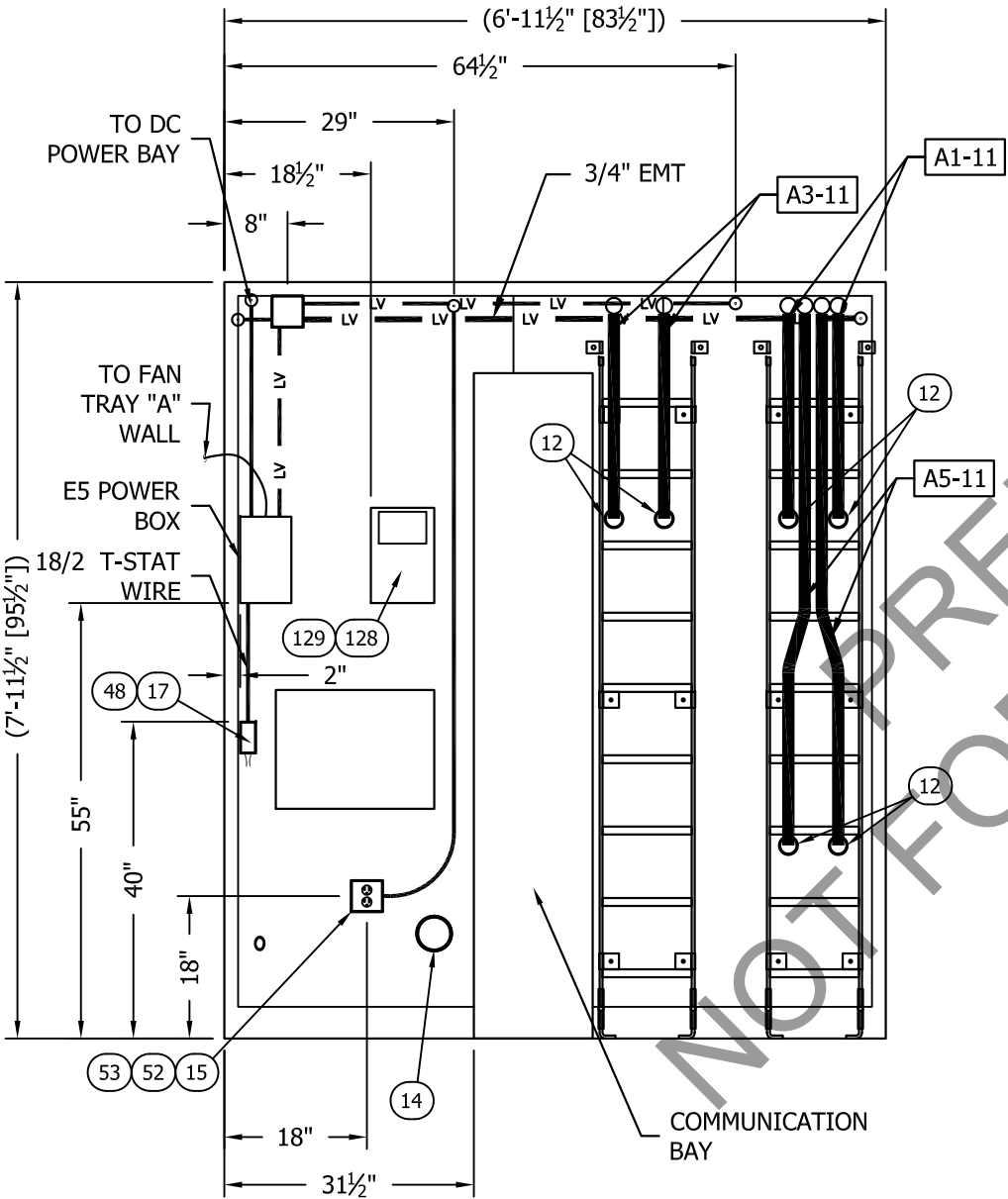
Sabre Industries
Building Systems by Cellixion
5031 Hazel Jones Road
Bossier City, LA 71111
Voice: (318) 213-2900
Fax: (318) 213-2919
www.sabreindustries.com

CUSTOMER:

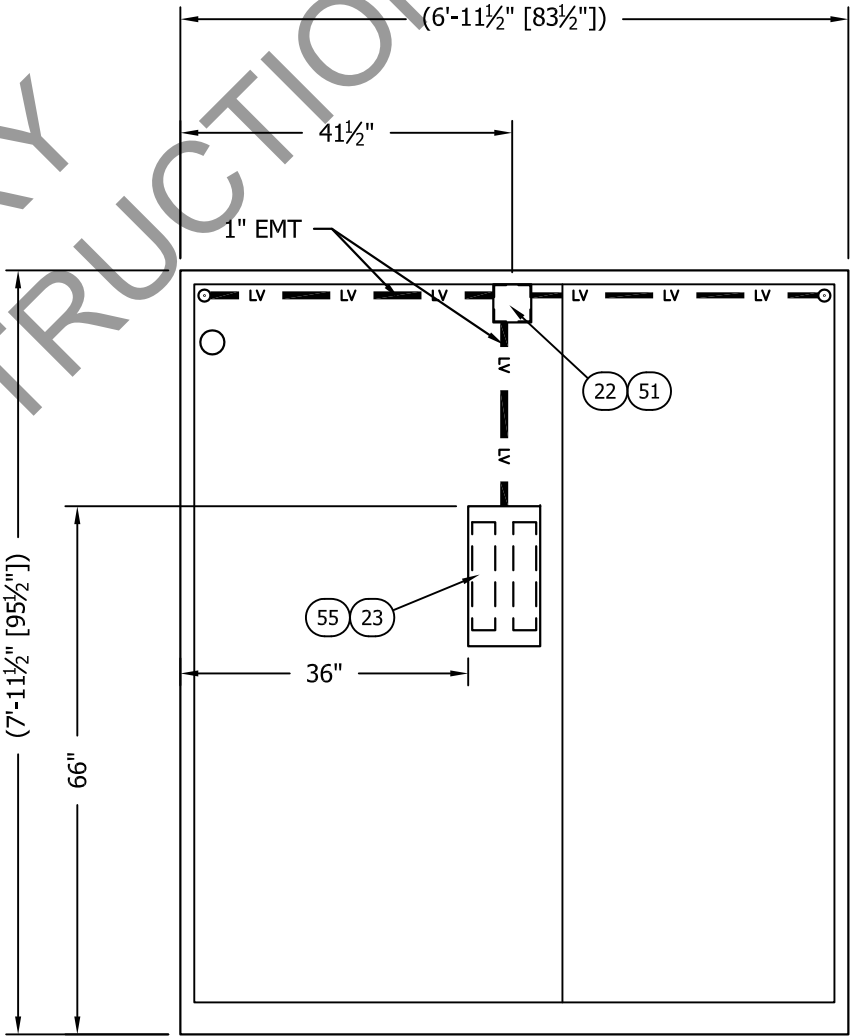
AT&T
MOBILITY

PROJECT:
08'-0" X 8'-0"
CONCRETE SHELTER
INTERIOR ELEVATION
WALL "A" & "C" (ELECTRICAL)

FILENAME: SATN70	
SCALE: 1/2" = 1'-0"	TOLERANCE:
DRWN. BY: G. BRINKMAN	DATE: 01/04/18
CHK. BY: C. MITCHEL	DATE: 01/04/18
APP. BY: D. BRANNEN	DATE: 01/04/18
SHEET NO. 4-0	
DRAWING NO.: SATN70	REV.: IR



INTERIOR ELEVATION "B"
(ELECTRICAL)



INTERIOR ELEVATION "D"
(ELECTRICAL)

THIS DRAWING IS THE CONFIDENTIAL PROPERTY AND CONTAINS TRADE SECRETS OF CELLIXION, LLC. ALL DESIGN, LAYOUT AND FABRICATION DETAILS CONTAINED IN THIS DRAWING ARE CONSIDERED PROPRIETARY. ANY USE OF THESE DRAWINGS OR THE INFORMATION CONTAINED HEREIN FOR ANY REASON OTHER THAN AS EXPRESSLY AUTHORIZED BY SABRE INDUSTRIES, INC. IS STRICTLY PROHIBITED. CONTRACTORS PERFORMING AUTHORIZED WORK WITHIN THE SHELTER ARE AUTHORIZED TO USE THE INFORMATION CONTAINED WITHIN THE DRAWING FOR EQUIPMENT INSTALLATION PURPOSES. THIS DRAWING HAS BEEN DISTRIBUTED WITH THE UNDERSTANDING THAT ANYONE RECEIVING OR OTHERWISE OBTAINING POSSESSION OF IT WILL BE EXPRESSLY NOTIFIED OF ITS CONFIDENTIAL NATURE.

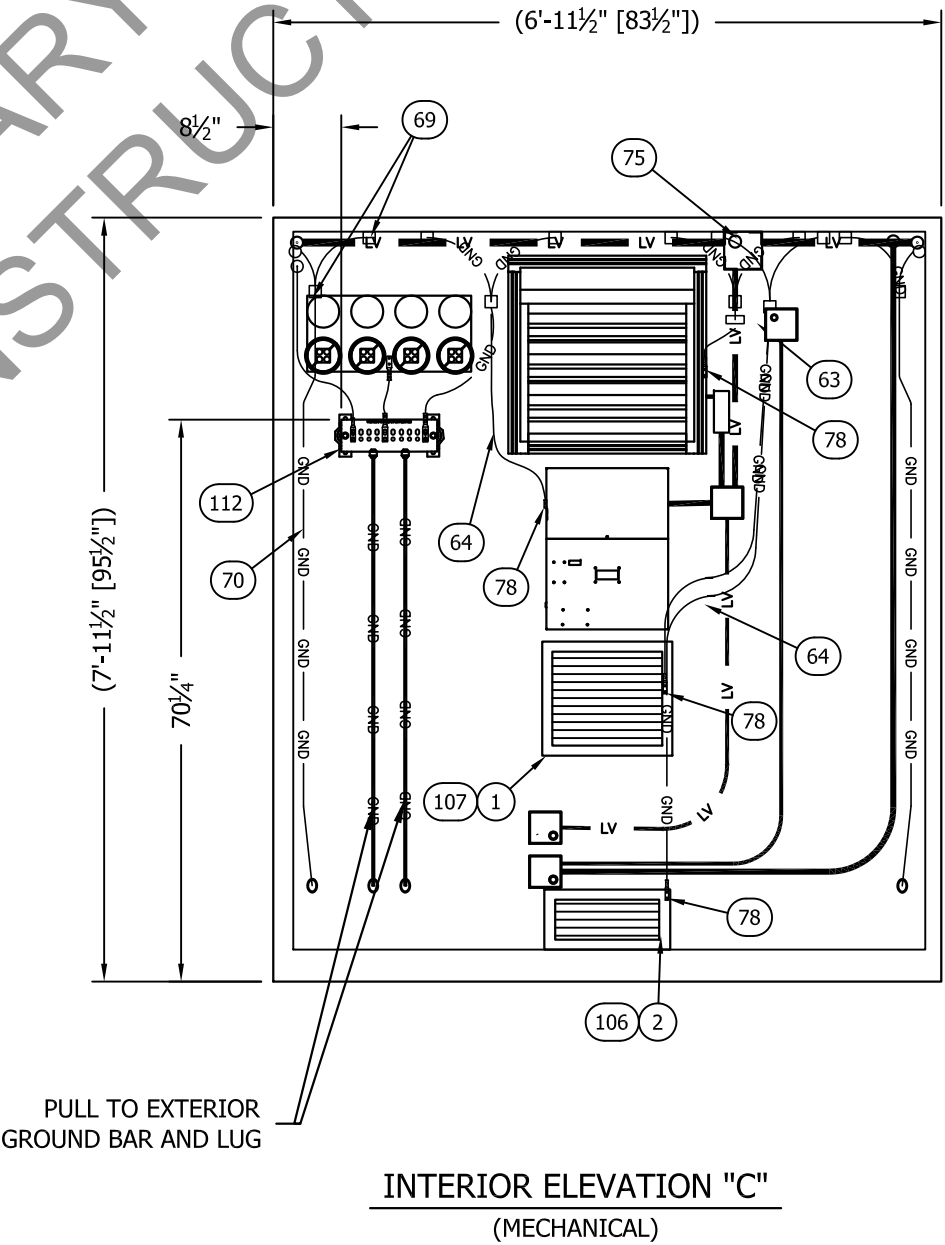
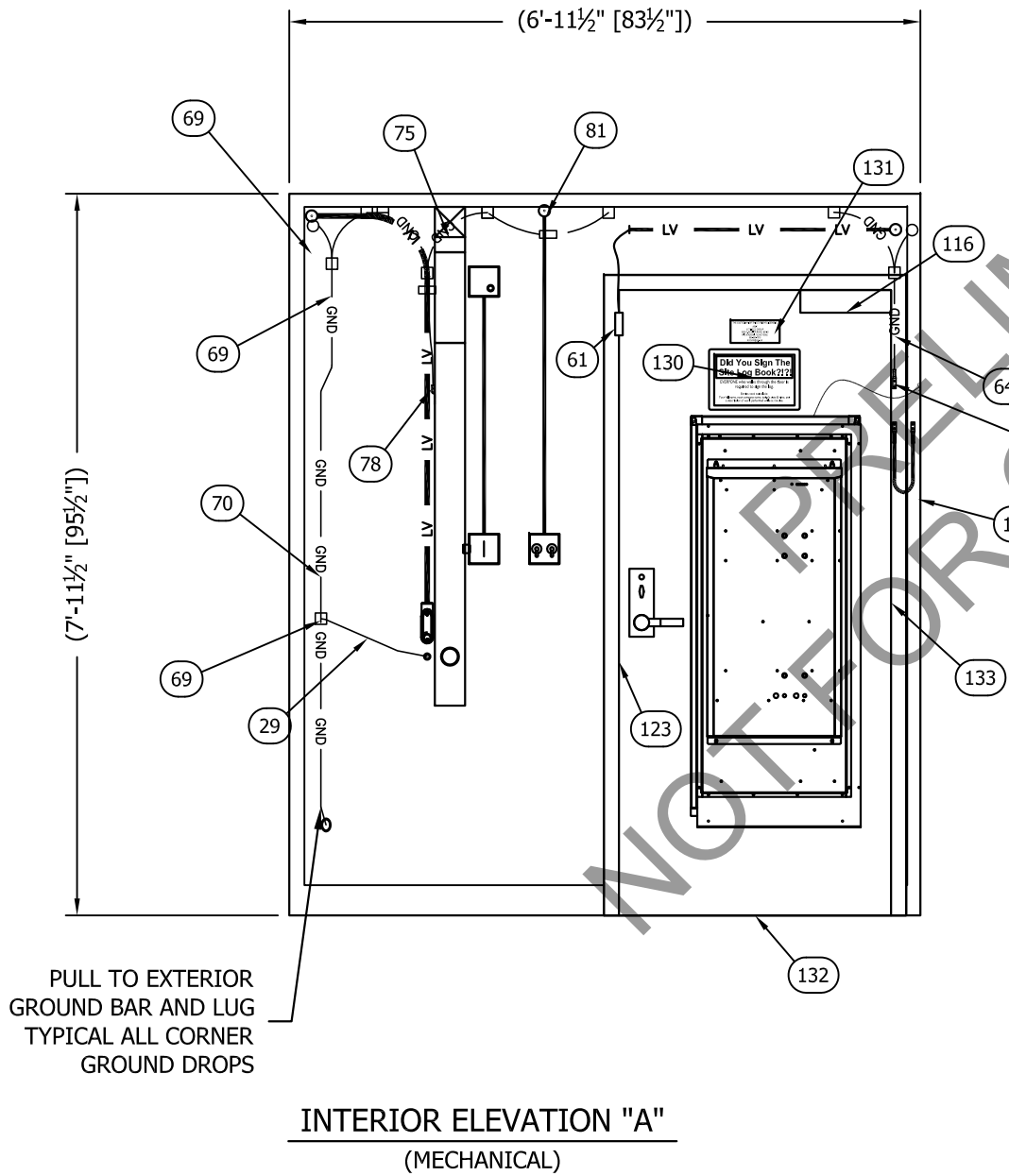
Sabre Industries
Building Systems by Cellixion
5031 Hazel Jones Road
Bossier City, LA 71111
Voice: (318) 213-2900
Fax: (318) 213-2919
www.sabreindustries.com

CUSTOMER:
**AT&T
MOBILITY**

PROJECT:
**08'-0" X 8'-0"
CONCRETE SHELTER
INTERIOR ELEVATION WALLS
"B" & "D" (ELECTRICAL)**

FILENAME: SATN70	
SCALE: 1/2" = 1'-0"	TOLERANCE:
DRWN. BY: G. BRINKMAN	DATE: 01/04/18
CHK. BY: C. MITCHEL	DATE: 01/04/18
APP. BY: D. BRANNEN	DATE: 01/04/18
SHEET NO. 4-1	
DRAWING NO.: SATN70	REV.: IR

SUB-PARTS LIST			
ITEM	P/N	DESCRIPTION	CUT
29	400050	WIRE, #2 THHN, STRAND, GRN	48"
64	400030	WIRE, #6 THHN, STRAND, GRN	420"
68	400050	WIRE, #2 THHN, STRAND, GRN	12"
70	400099	WIRE, #2 SOLID COPPER, BARE, TINNED	216"



- NOTE:
- ALL GROUND DROPS AND EQUIPMENT GROUNDING ATTACH TO CEILING MOUNTED HALO EXCEPT WHERE NOTED.

THIS DRAWING IS THE CONFIDENTIAL PROPERTY AND CONTAINS TRADE SECRETS OF CELLIXION, LLC. ALL DESIGN, LAYOUT AND FABRICATION DETAILS CONTAINED IN THIS DRAWING ARE CONSIDERED PROPRIETARY. ANY USE OF THESE DRAWINGS OR THE INFORMATION CONTAINED HEREIN FOR ANY REASON OTHER THAN AS EXPRESSLY AUTHORIZED BY SABRE INDUSTRIES, INC. IS STRICTLY PROHIBITED. CONTRACTORS PERFORMING AUTHORIZED WORK WITHIN THE SHELTER ARE AUTHORIZED TO USE THE INFORMATION CONTAINED WITHIN THE DRAWING FOR EQUIPMENT INSTALLATION PURPOSES. THIS DRAWING HAS BEEN DISTRIBUTED WITH THE UNDERSTANDING THAT ANYONE RECEIVING OR OTHERWISE OBTAINING POSSESSION OF IT WILL BE EXPRESSLY NOTIFIED OF ITS CONFIDENTIAL NATURE.

Sabre Industries
Building Systems by Cellixion
5031 Hazel Jones Road
Bossier City, LA 71111
Voice: (318) 213-2900
Fax: (318) 213-2919
www.sabreindustries.com

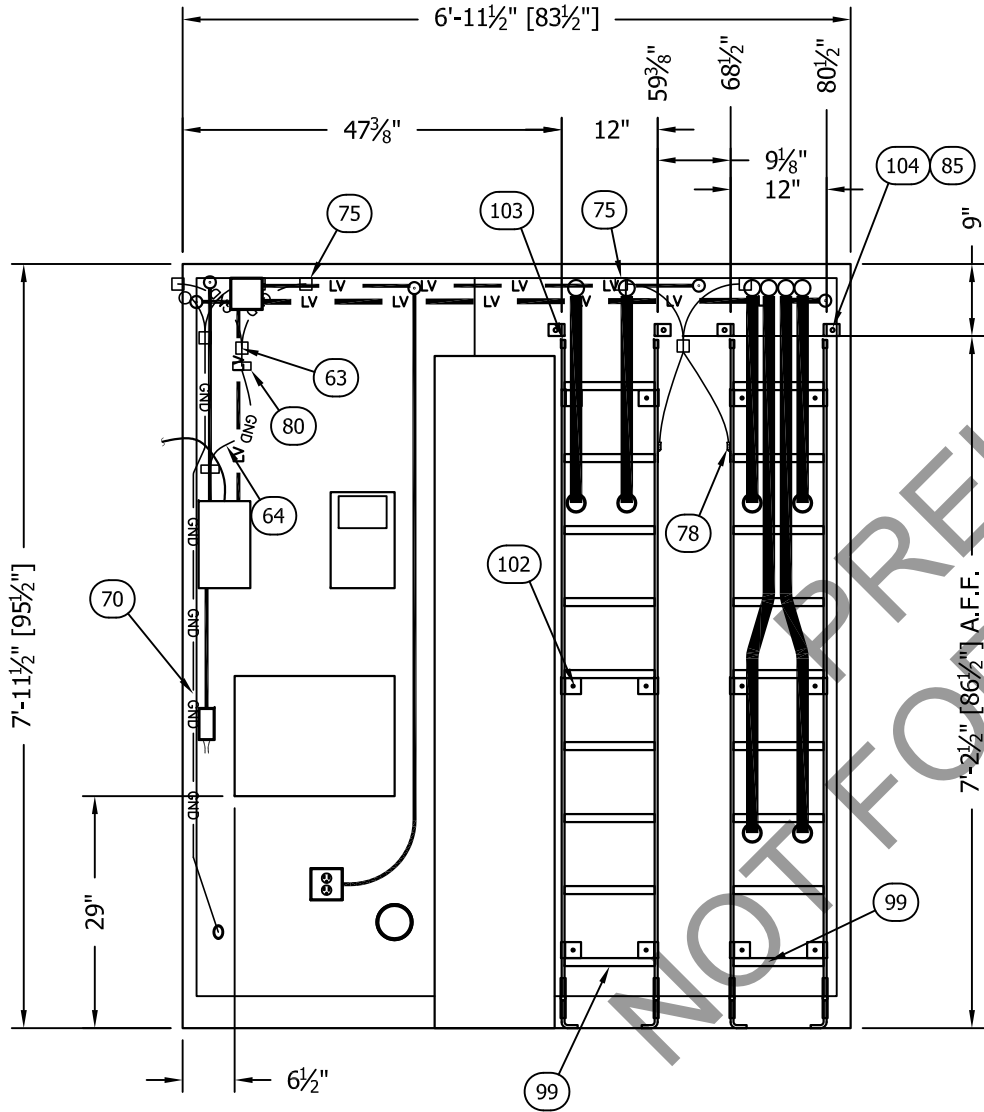
CUSTOMER:

AT&T
MOBILITY

PROJECT:
08'-0" X 8'-0"
CONCRETE SHELTER
INTERIOR ELEVATION
WALL "A" & "C" (MECHANICAL)

FILENAME: SATN70	
SCALE: 1/2" = 1'-0"	TOLERANCE:
DRWN. BY: G. BRINKMAN	DATE: 01/04/18
CHK. BY: C. MITCHEL	DATE: 01/04/18
APP. BY: D. BRANNEN	DATE: 01/04/18
SHEET NO. 5-0	
DRAWING NO.: SATN70	REV.: 1R

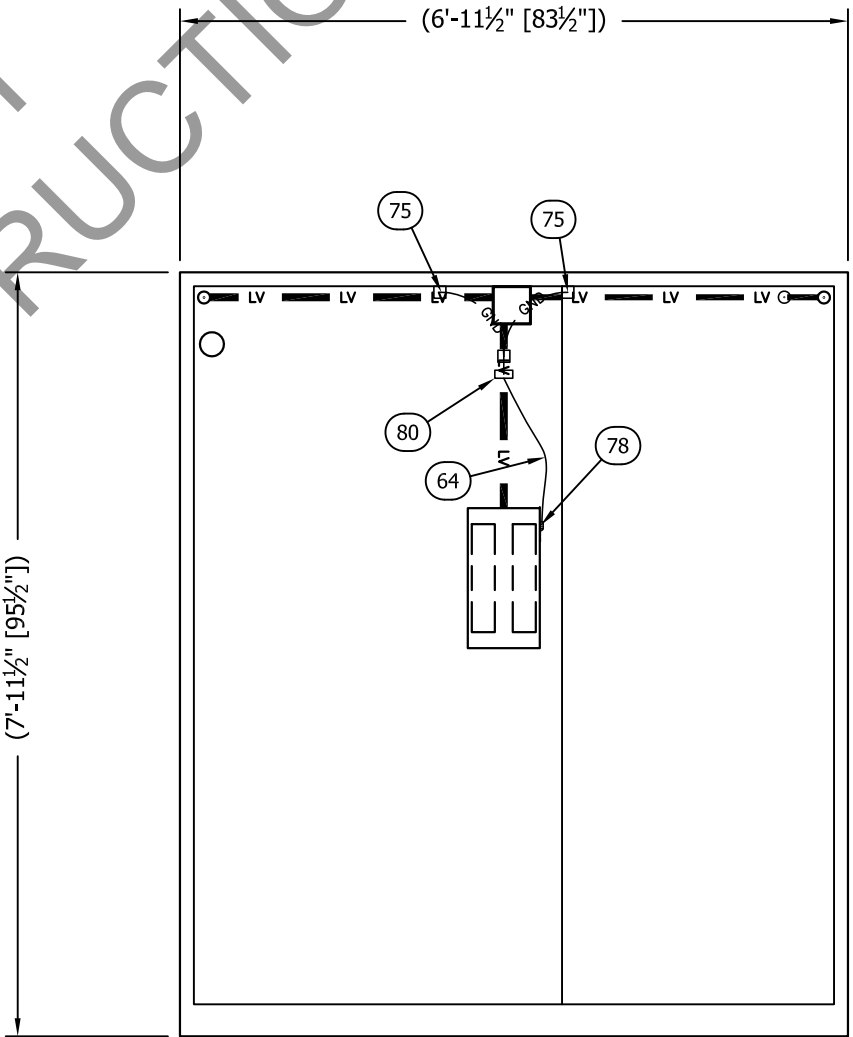
SUB-PARTS LIST			
ITEM	P/N	DESCRIPTION	CUT
99	510000	CABLE LADDER,12"X9'8 1/2",YELLOW ZI (OR EQUAL)	82"
64	400030	WIRE, #6 THHN, STRAND, GRN	420"



INTERIOR ELEVATION "B"
(MECHANICAL)

NOTE:

- ALL GROUND DROPS AND EQUIPMENT GROUNDING ATTACH TO CEILING MOUNTED HALO EXCEPT WHERE NOTED.



INTERIOR ELEVATION "D"
(MECHANICAL)

THIS DRAWING IS THE CONFIDENTIAL PROPERTY AND CONTAINS TRADE SECRETS OF CELLIXION, LLC. ALL DESIGN, LAYOUT AND FABRICATION DETAILS CONTAINED IN THIS DRAWING ARE CONSIDERED PROPRIETARY. ANY USE OF THESE DRAWINGS OR THE INFORMATION CONTAINED HEREIN FOR ANY REASON OTHER THAN AS EXPRESSLY AUTHORIZED BY SABRE INDUSTRIES, INC. IS STRICTLY PROHIBITED. CONTRACTORS PERFORMING AUTHORIZED WORK WITHIN THE SHELTER ARE AUTHORIZED TO USE THE INFORMATION CONTAINED WITHIN THE DRAWING FOR EQUIPMENT INSTALLATION PURPOSES. THIS DRAWING HAS BEEN DISTRIBUTED WITH THE UNDERSTANDING THAT ANYONE RECEIVING OR OTHERWISE OBTAINING POSSESSION OF IT WILL BE EXPRESSLY NOTIFIED OF ITS CONFIDENTIAL NATURE.

Sabre Industries

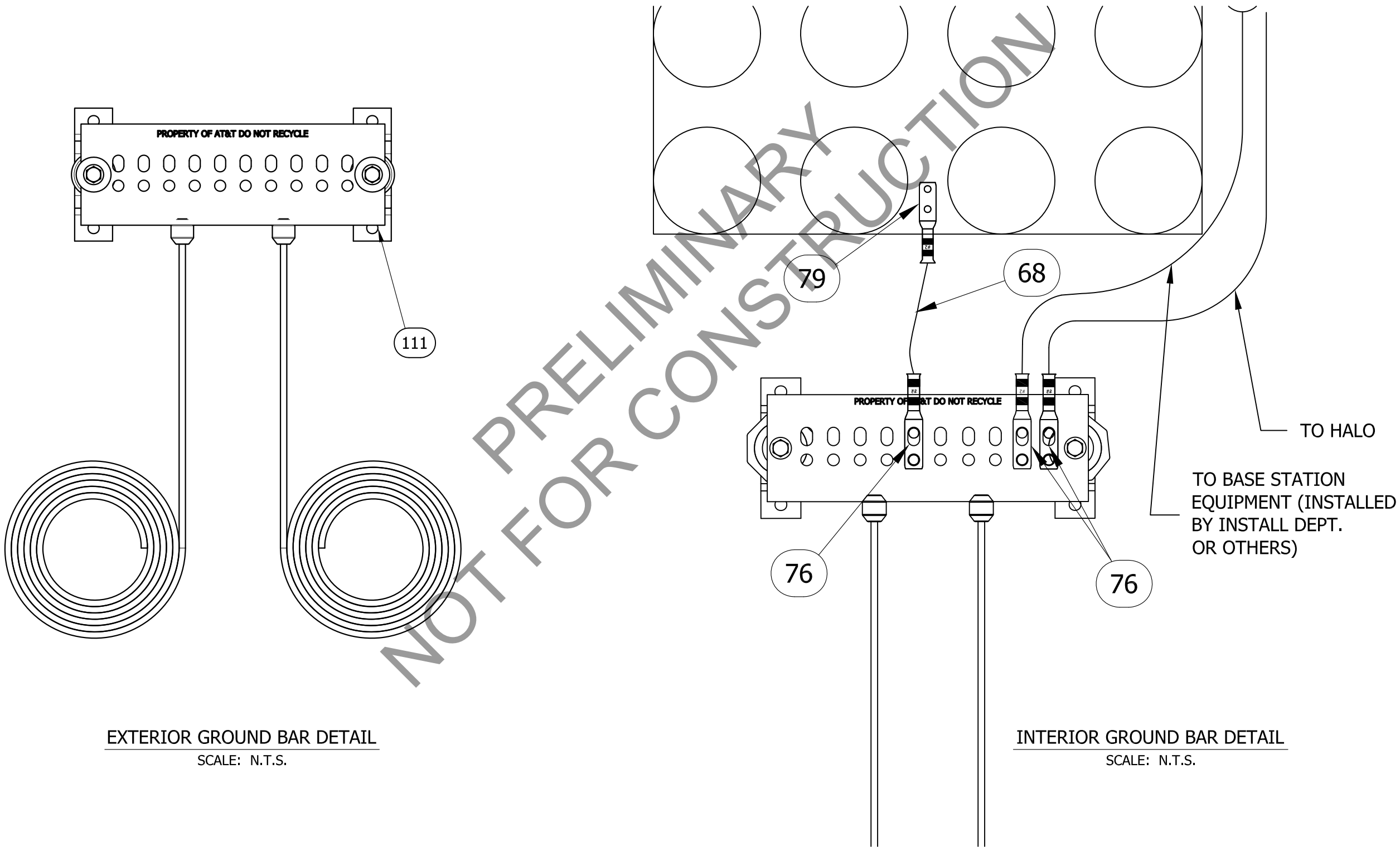
Building Systems by Cellixion

5031 Hazel Jones Road
Bossier City, LA 71111
Voice: (318) 213-2900
Fax: (318) 213-2919
www.sabreindustries.com

CUSTOMER:
**AT&T
MOBILITY**

PROJECT:
**08'-0" X 8'-0"
CONCRETE SHELTER
INTERIOR ELEVATION WALLS
"B" & "D" (MECHANICAL)**

FILENAME: SATN70	
SCALE: 1/2" = 1'-0"	TOLERANCE:
DRWN. BY: G. BRINKMAN	DATE: 01/04/18
CHK. BY: C. MITCHEL	DATE: 01/04/18
APP. BY: D. BRANNEN	DATE: 01/04/18
SHEET NO. 5-1	
DRAWING NO.: SATN70	REV.: IR



EXTERIOR GROUND BAR DETAIL
SCALE: N.T.S.

INTERIOR GROUND BAR DETAIL
SCALE: N.T.S.

THIS DRAWING IS THE CONFIDENTIAL PROPERTY AND CONTAINS TRADE SECRETS OF CELLIXION, LLC. ALL DESIGN, LAYOUT AND FABRICATION DETAILS CONTAINED IN THIS DRAWING ARE CONSIDERED PROPRIETARY. ANY USE OF THESE DRAWINGS OR THE INFORMATION CONTAINED HEREIN FOR ANY REASON OTHER THAN AS EXPRESSLY AUTHORIZED BY SABRE INDUSTRIES, INC. IS STRICTLY PROHIBITED. CONTRACTORS PERFORMING AUTHORIZED WORK WITHIN THE SHELTER ARE AUTHORIZED TO USE THE INFORMATION CONTAINED WITHIN THE DRAWING FOR EQUIPMENT INSTALLATION PURPOSES. THIS DRAWING HAS BEEN DISTRIBUTED WITH THE UNDERSTANDING THAT ANYONE RECEIVING OR OTHERWISE OBTAINING POSSESSION OF IT WILL BE EXPRESSLY NOTIFIED OF ITS CONFIDENTIAL NATURE.

Sabre Industries
Building Systems by CellXion
5031 Hazel Jones Road
Bossier City, LA 71111
Voice: (318) 213-2900
Fax: (318) 213-2919
www.sabreindustries.com

CUSTOMER:
**AT&T
MOBILITY**

PROJECT:
**08'-0" X 8'-0"
CONCRETE SHELTER
MECHANICAL GROUND BAR
GROUNDING DETAILS**

FILENAME: SATN70	
SCALE: AS NOTED	TOLERANCE:
DRWN. BY: G. BRINKMAN	DATE: 01/04/18
CHK. BY: C. MITCHEL	DATE: 01/04/18
APP. BY: D. BRANNEN	DATE: 01/04/18
SHEET NO. 5-2	
DRAWING NO.: SATN70	REV.: IR