

2006 Approved Plans -
Areas over height limit highlighted yellow

DENNIS A. BEEBE

ARCHITECT, P.A.
925 TRUMAN AVE.
KEY WEST FLORIDA
U.S.A. 33040
PHONE: 305-296-8885

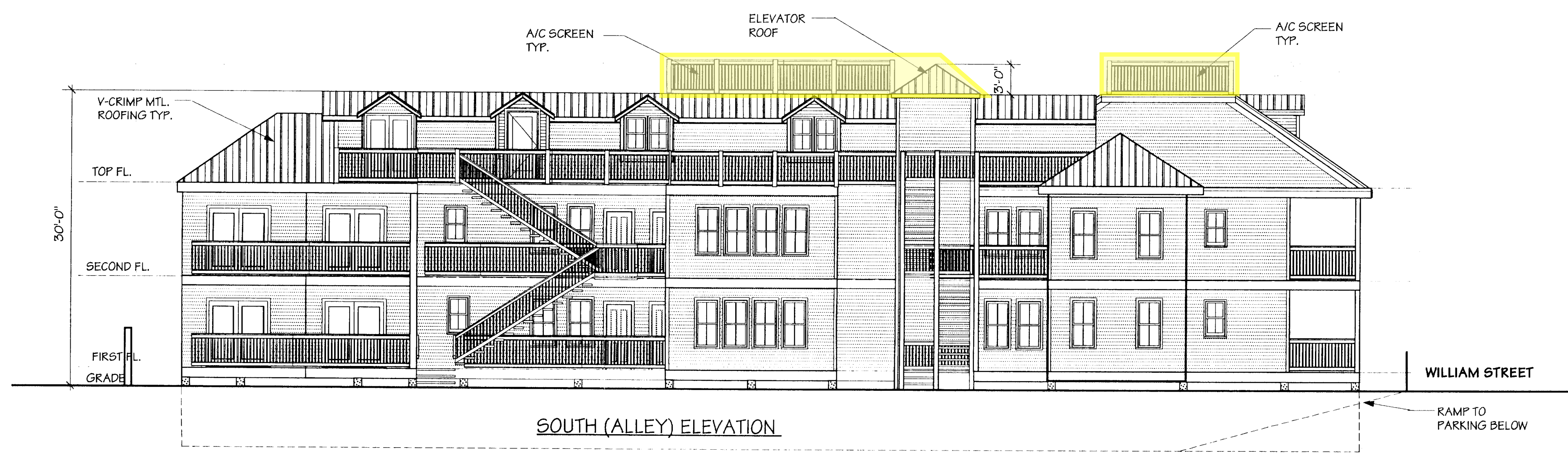
D. Beebe

All Drawings, Specifications and related documents are the copyright property of the Architect and must be returned on request. Drawings, Specifications and related documents are for use on this Project only and use or reproduction of a part or whole is forbidden without the Architect's written permission.

This drawing is not to be used for construction until scaled and signed by the Architect

Owen Trepanier
& Associates
PLANNER
Key West, Florida
Phone: 305.744.0085

NO.	ISSUED FOR	DATE
1	HARC COMMENTS	11/23/05
2	PLAN. DEPT. COMMENTS	01/20/06
3	IMPERVIOUS CALCULATIONS	02/02/06



RECEIVED
APR 03 2006
CITY OF KEY WEST
PLANNING DEPT.

DRAWING TITLE:

EXTERIOR
ELEVATIONS

PROJECT:

Southern Gables
716-718 South St.
Key West, Fla.

SCALE: 1/8"=1'-0"
DRAWN: D.A.B.
CHECK: D.A.B.
JOB No. 05.02
DATE: 11/21/2005

A-3