

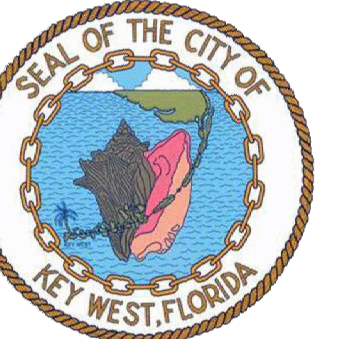


BERMELLO AJAMIL & PARTNERS INC

Architecture • Engineering • Planning
Interior Design • Landscape Architecture
2601 South Bayshore Drive
Suite 1000
Miami, Florida 33133
(305) 859-2050
Fax (305) 860-3700

PREPARED FOR/OWNER:

CITY OF KEY WEST, FL
P. O. BOX 1409
3140 FLAGLER AVENUE
KEY WEST, FL 33041



PROJECT NAME:

TRUMAN WATERFRONT PARK

PROJECT LOCATION/ADDRESS:

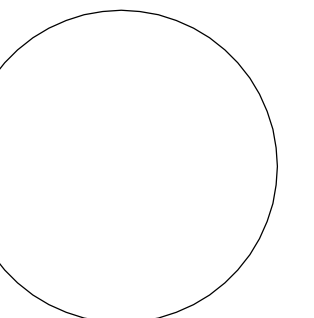
TRUMAN WATERFRONT PARK WEST OF FORT STREET AND THE TRUMAN ANNEX DEVELOPMENT, NORTH OF KEY WEST NAVAL BASE

SUB-CONSULTANT INFORMATION:

mbi | k2m

ARCHITECTURE, INC.
1001 Whitehead St., Suite 101
Key West, Florida 33040
Tel: 305-292-7722
Fax: 305-292-2162
Email: info@mbi-k2m.com
URL: www.mbi-k2m.com
PROF. REG. AA26001059

PROFESSIONAL SEAL:



ANTHONY D. SARNO, R.A.
FLORIDA REGISTERED ARCHITECT
LICENSE NUMBER AR95308

SUBMITTAL DESCRIPTION / MILESTONE:

DEVELOPMENT APPLICATION
January 14, 2013

REVISIONS:

NO.	DESCRIPTION

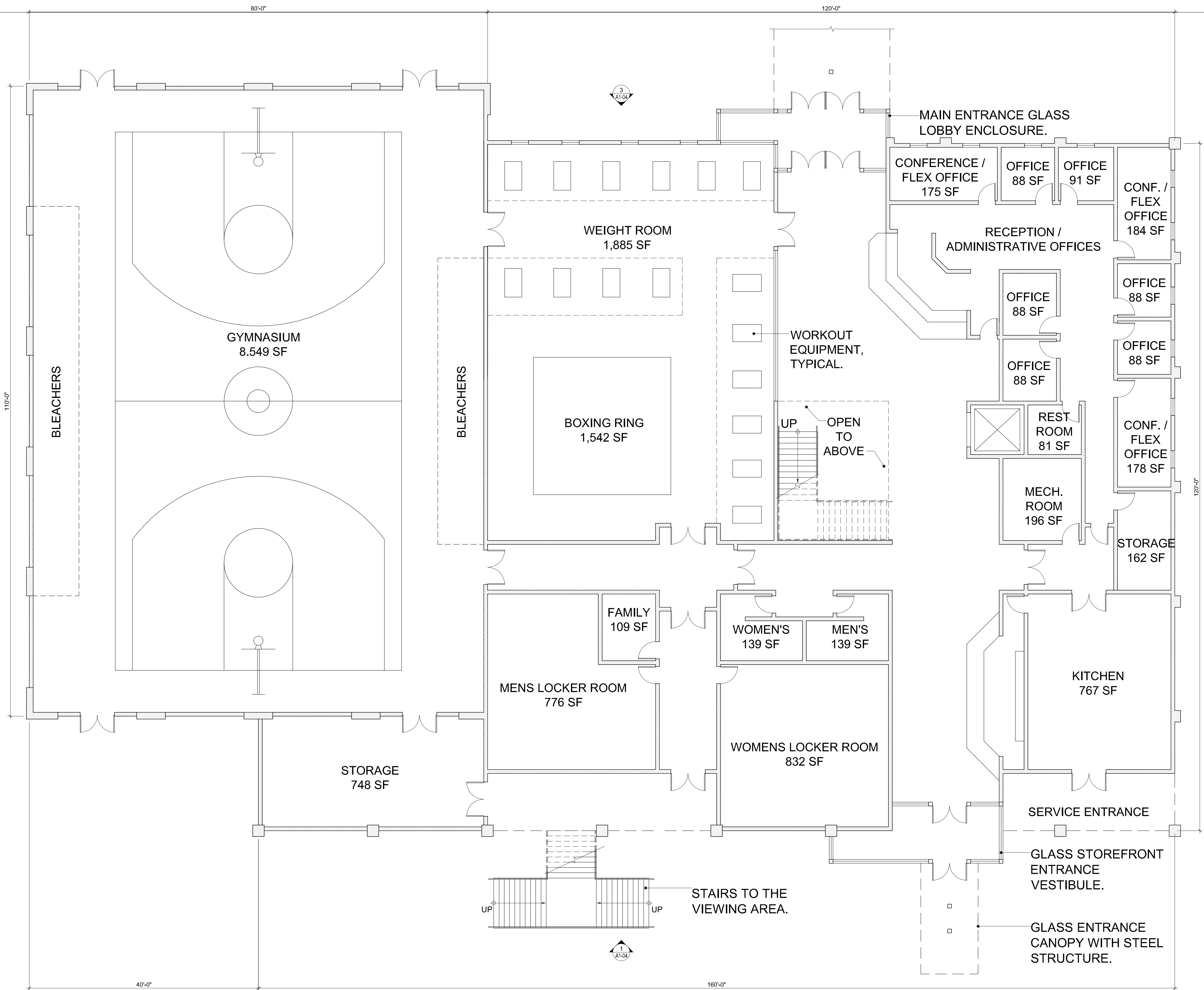
DRAWING SHEET INFORMATION

BA PROJECT NO.: 12010
SCALE: AS NOTED
DATE: 01/14/2013
DRAWN BY: PSS
CHECKED BY: ADS
CADD FILE: a_fp_101.dwg

DRAWING TITLE:

COMMUNITY CENTER - 1ST FLOOR PLAN
SHEET NO.

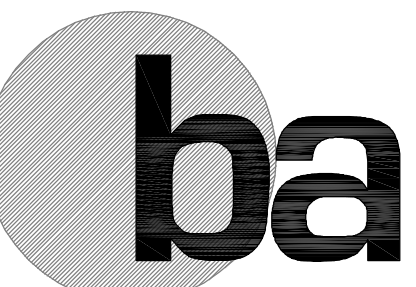
A1-01



01 COMMUNITY CENTER - FIRST FLOOR PLAN
SCALE: 1/8" = 1'-0"



A:\2012\20120101 - ba - Truman Waterfront Park\Drawings\A1-01.dwg, 1/13/2013 10:54 AM, scale: 1/8" = 1'-0", 11/27/2013



BERMELLO AJAMIL & PARTNERS • INC

Architecture • Engineering • Planning
Interior Design • Landscape Architecture
2601 South Bayshore Drive
Suite 1000
Miami, Florida 33133
(305) 859-2050
Fax (305) 860-3700

PREPARED FOR/OWNER:

CITY OF KEY WEST, FL
P. O. BOX 1409
3140 FLAGLER AVENUE
KEY WEST, FL 33041



PROJECT NAME:

TRUMAN WATERFRONT PARK

PROJECT LOCATION/ADDRESS:

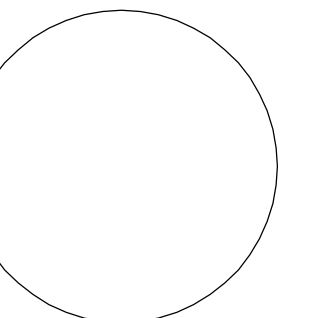
TRUMAN WATERFRONT PARK WEST OF FORT STREET AND THE TRUMAN ANNEX DEVELOPMENT, NORTH OF KEY WEST NAVAL BASE

SUB-CONSULTANT INFORMATION:

mbi | k2m

ARCHITECTURE, INC.
1001 Whitehead St., Suite 101
Key West, Florida 33040
Tel: 305-292-7722
Fax: 305-292-2162
Email: info@mbi-k2m.com
URL: www.mbi-k2m.com
PROF. REG. AA26001059

PROFESSIONAL SEAL:



ANTHONY D. SARNO, R.A.
FLORIDA REGISTERED ARCHITECT
LICENSE NUMBER AR95308

SUBMITTAL DESCRIPTION / MILESTONE:

DEVELOPMENT APPLICATION
January 14, 2013

REVISIONS:

NO.	DESCRIPTION

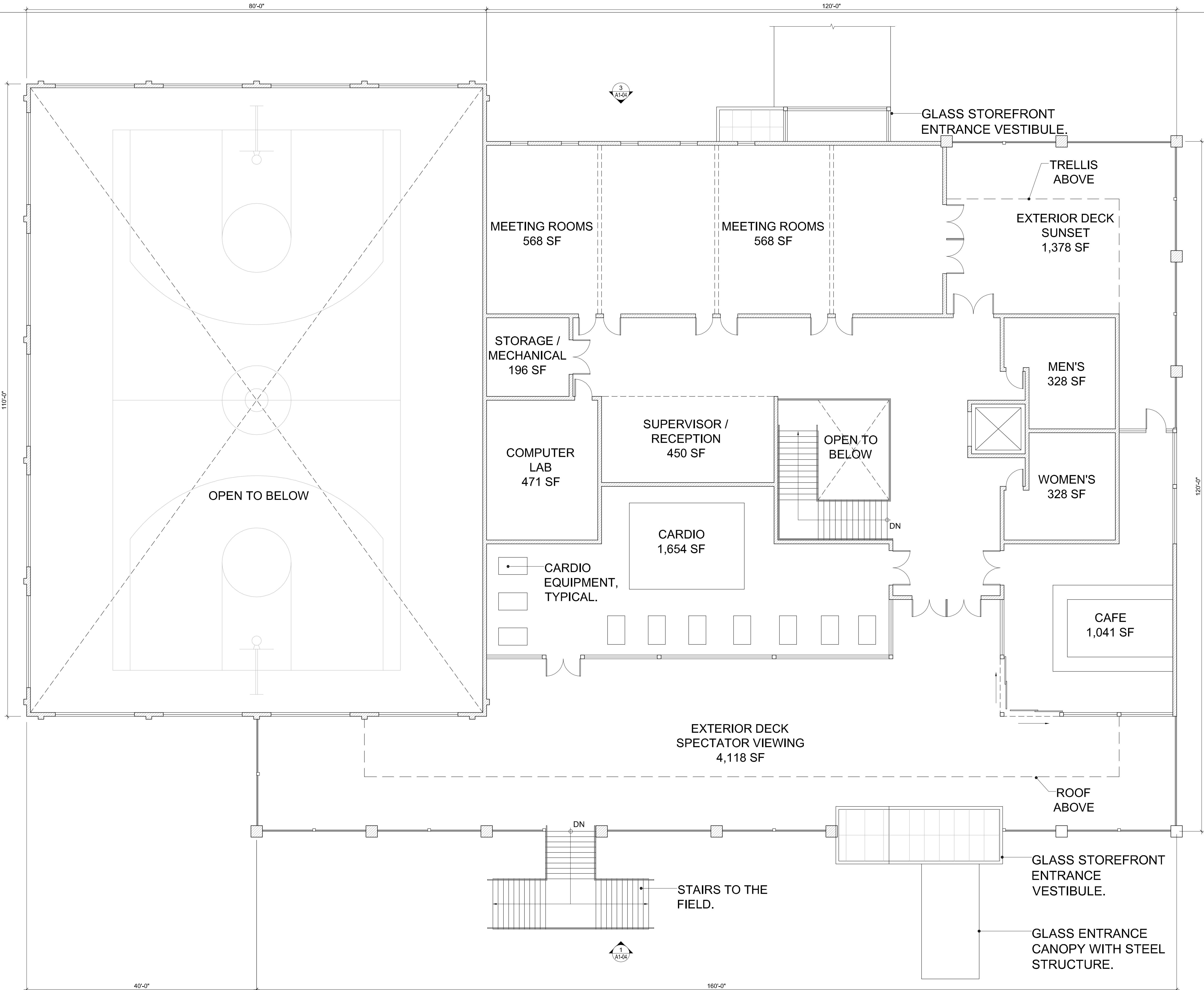
DRAWING SHEET INFORMATION

BA PROJECT NO.: 12010
SCALE: AS NOTED
DATE: 01/14/2013
DRAWN BY: PSS
CHECKED BY: ADS
CADD FILE: a_fp_101.dwg

DRAWING TITLE:

COMMUNITY CENTER - 2ND FLOOR PLAN
SHEET NO.

A1-02



01 COMMUNITY CENTER - SECOND FLOOR PLAN
A1-02 SCALE: 1/8" = 1'-0"



K:\0207286\2011 - 11 - Truman Waterfront Park\0207286.dwg, 15/01/13 10:58:44, scale: 1/8" = 1'-0", 11/17/13 10:58:44



BERMELLO AJAMIL & PARTNERS • INC

Architecture • Engineering • Planning
Interior Design • Landscape Architecture
2601 South Bayshore Drive
Suite 1000
Miami, Florida 33133
(305) 859-2050
Fax (305) 860-3700

PREPARED FOR/OWNER:

CITY OF KEY WEST, FL
P. O. BOX 1409
3140 FLAGLER AVENUE
KEY WEST, FL 33041



PROJECT NAME:

**TRUMAN
WATERFRONT
PARK**

PROJECT LOCATION/ADDRESS:

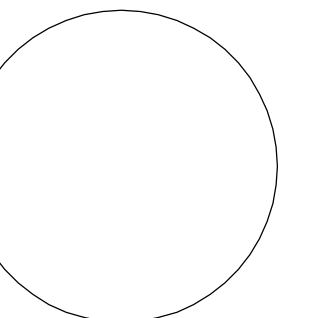
TRUMAN WATERFRONT PARK WEST
OF FORT STREET AND THE TRUMAN
ANNEX DEVELOPMENT, NORTH OF
KEY WEST NAVAL BASE

SUB-CONSULTANT INFORMATION:

mbi | k2m

ARCHITECTURE, INC.
1001 Whitehead St., Suite 101
Key West, Florida 33040
Tel: 305-292-7722
Fax: 305-292-2162
Email: info@mbi-k2m.com
URL: www.mbi-k2m.com
PROF. REG. AA26001059

PROFESSIONAL SEAL:



ANTHONY D. SARNO, R.A.
FLORIDA REGISTERED ARCHITECT
LICENSE NUMBER AR95308

SUBMITTAL DESCRIPTION / MILESTONE:

**DEVELOPMENT
APPLICATION
January 14, 2013**

REVISIONS:

NO.	DESCRIPTION

DRAWING SHEET INFORMATION

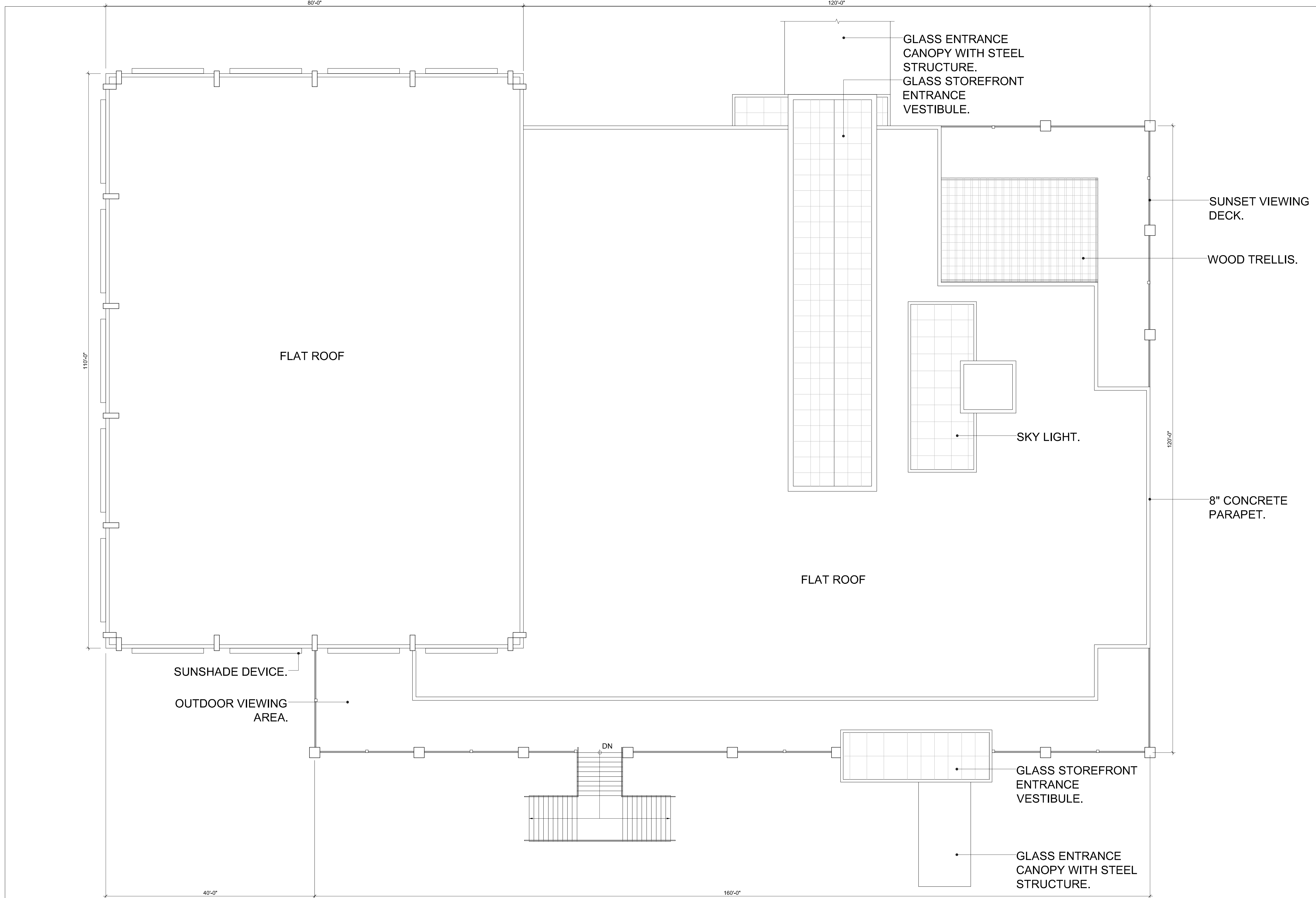
BA PROJECT NO.: 12010
SCALE: AS NOTED
DATE: 01/14/2013
DRAWN BY: PSS
CHECKED BY: ADS
CADD FILE: a_fp_101.dwg

DRAWING TITLE:

**COMMUNITY
CENTER -
ROOF PLAN**

SHEET NO.

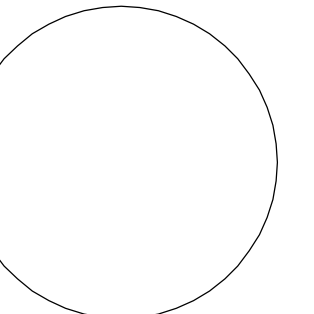
A1-03



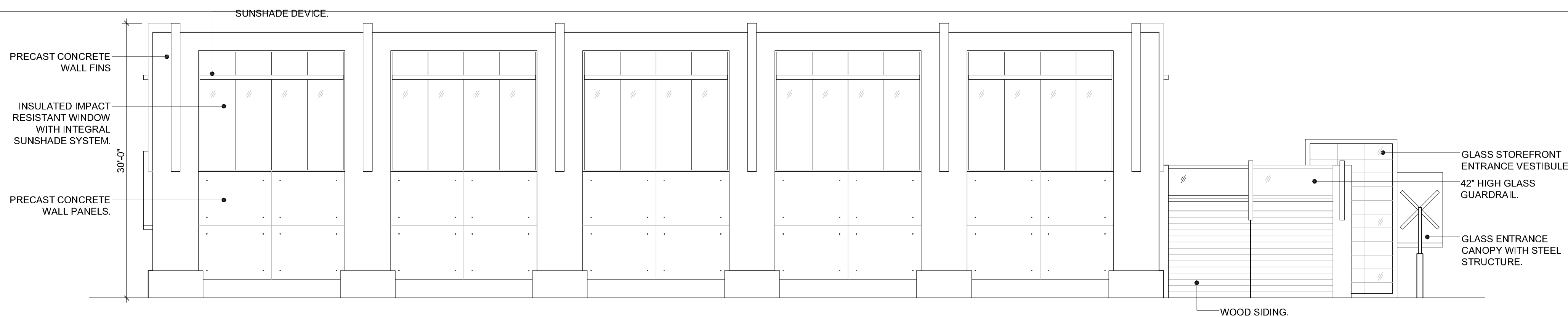
01 COMMUNITY CENTER - ROOF PLAN
A1-03 SCALE: 1/8" = 1'-0"



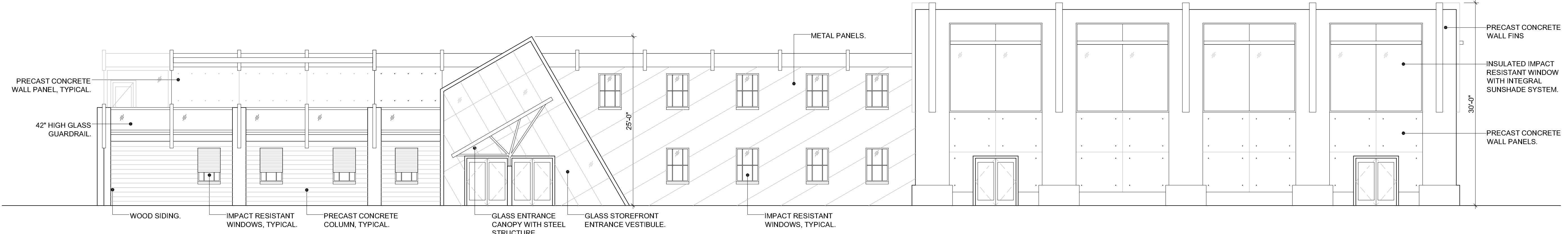
K:\2012\12010 - Truman Waterfront Park\0101.dwg, 13/01/13 10:57 AM, scale: 1/8" = 1'-0", 1/17/13 10:57 AM



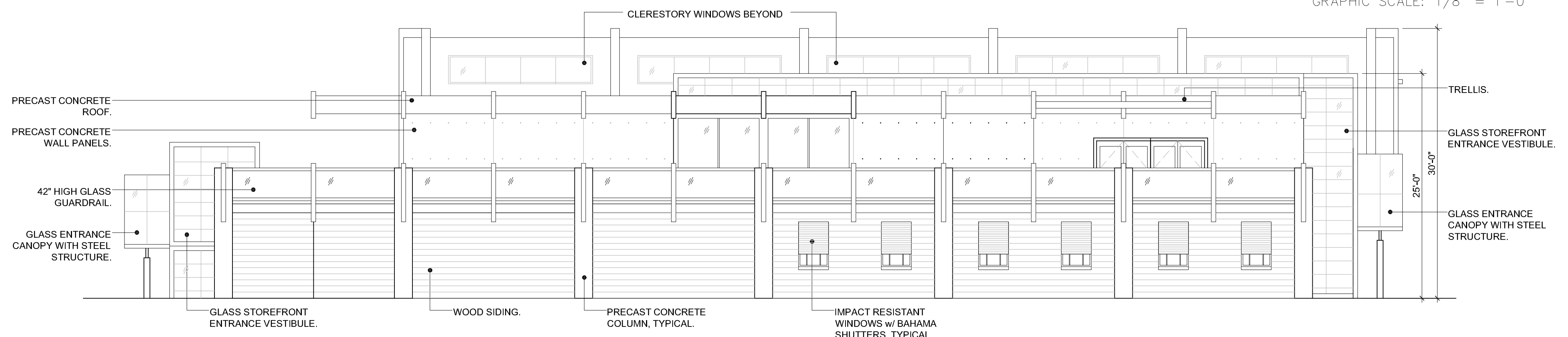
NO.	DESCRIPTION



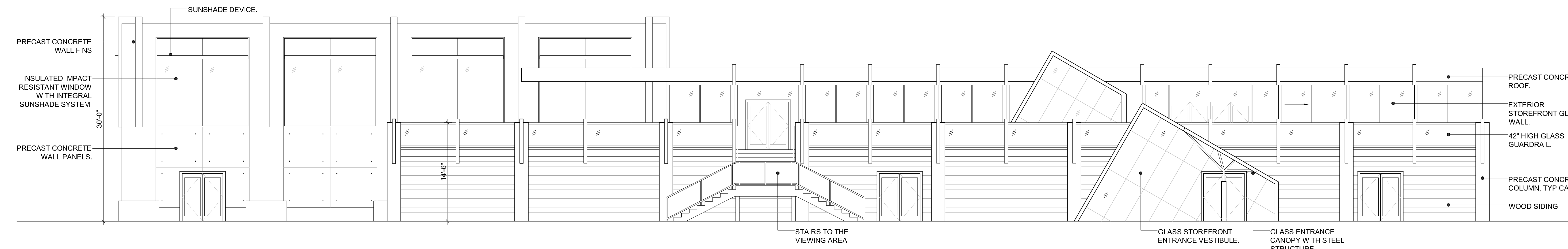
04
A1-04 **COMMUNITY CENTER ELEVATION - SOUTH**
SCALE: 1/8" = 1'-0"



03
A1-04 **COMMUNITY CENTER ELEVATION - WEST- MAIN ENTRANCE**
SCALE: 1/8" = 1'-0"



02
A1-04 **COMMUNITY CENTER ELEVATION - NORTH**
SCALE: 1/8" = 1'-0"



01
A1-04 **COMMUNITY CENTER ELEVATION - EAST**
SCALE: 1/8" = 1'-0"



K:\0307\2013\01 - TRUMAN WATERFRONT PARK\DWG\A1-04.dwg, 1/14/2013 10:58 AM, scale: 1/8" = 1'-0", berrymark