

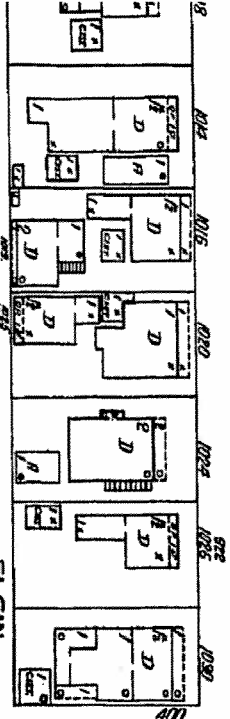
#1124 Eaton Street circa 1965 Monroe County Library

1929

EATON

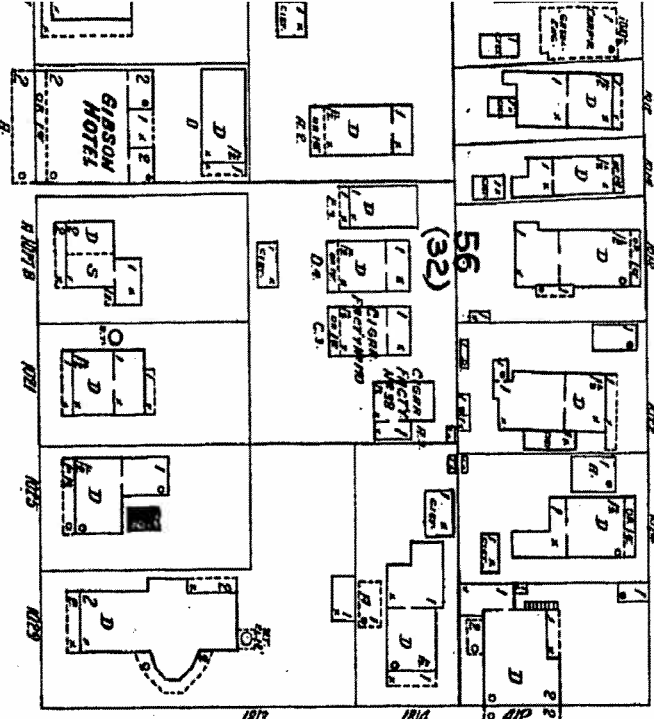
G.W. PIPE

276'

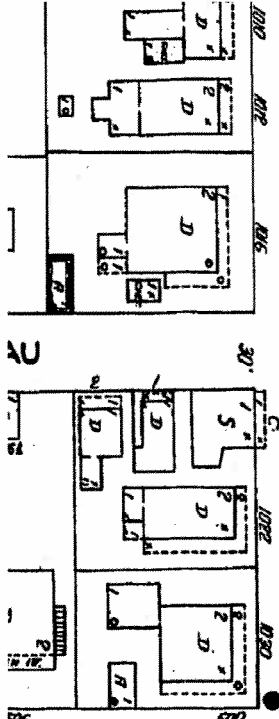


ELGIN

(32) 56



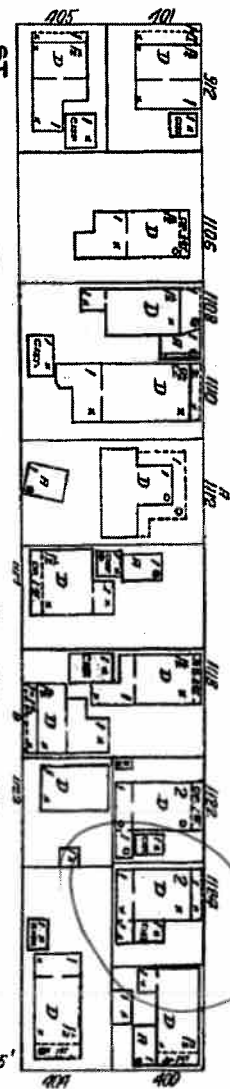
FLEMING



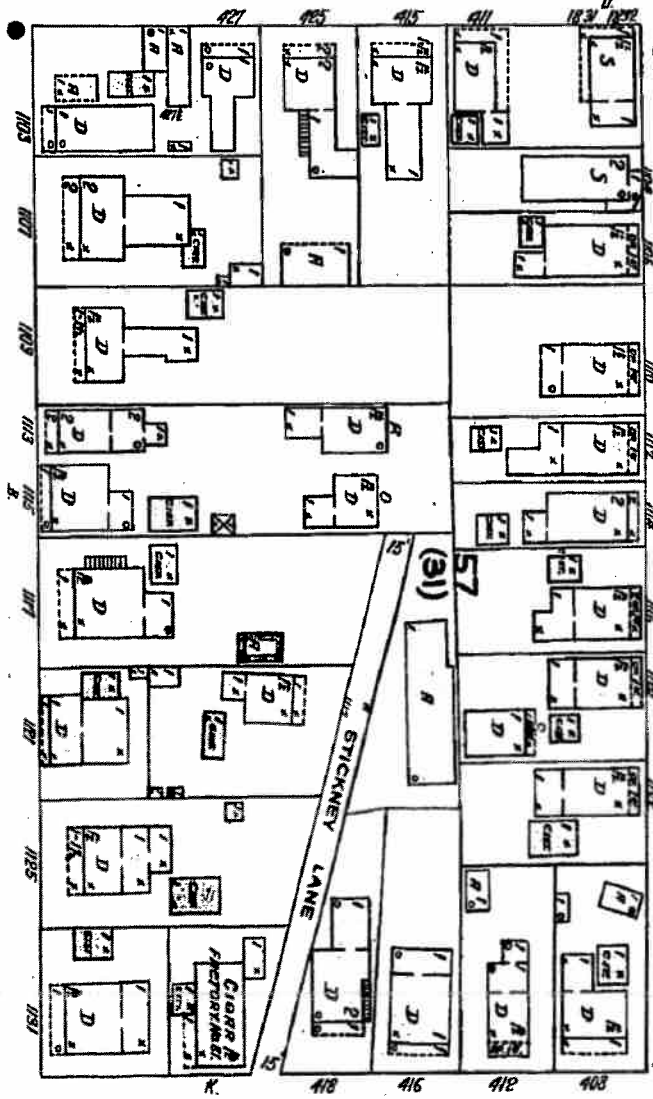
FRANCIS

(FRANCES)

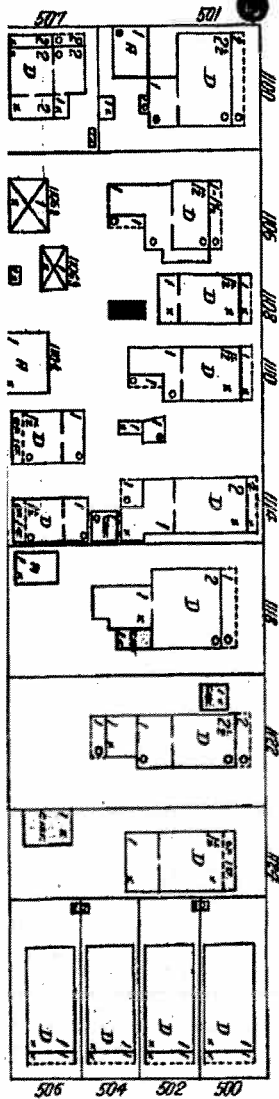
G.W. PIPE



55'



(31) 57



WHITE

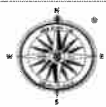
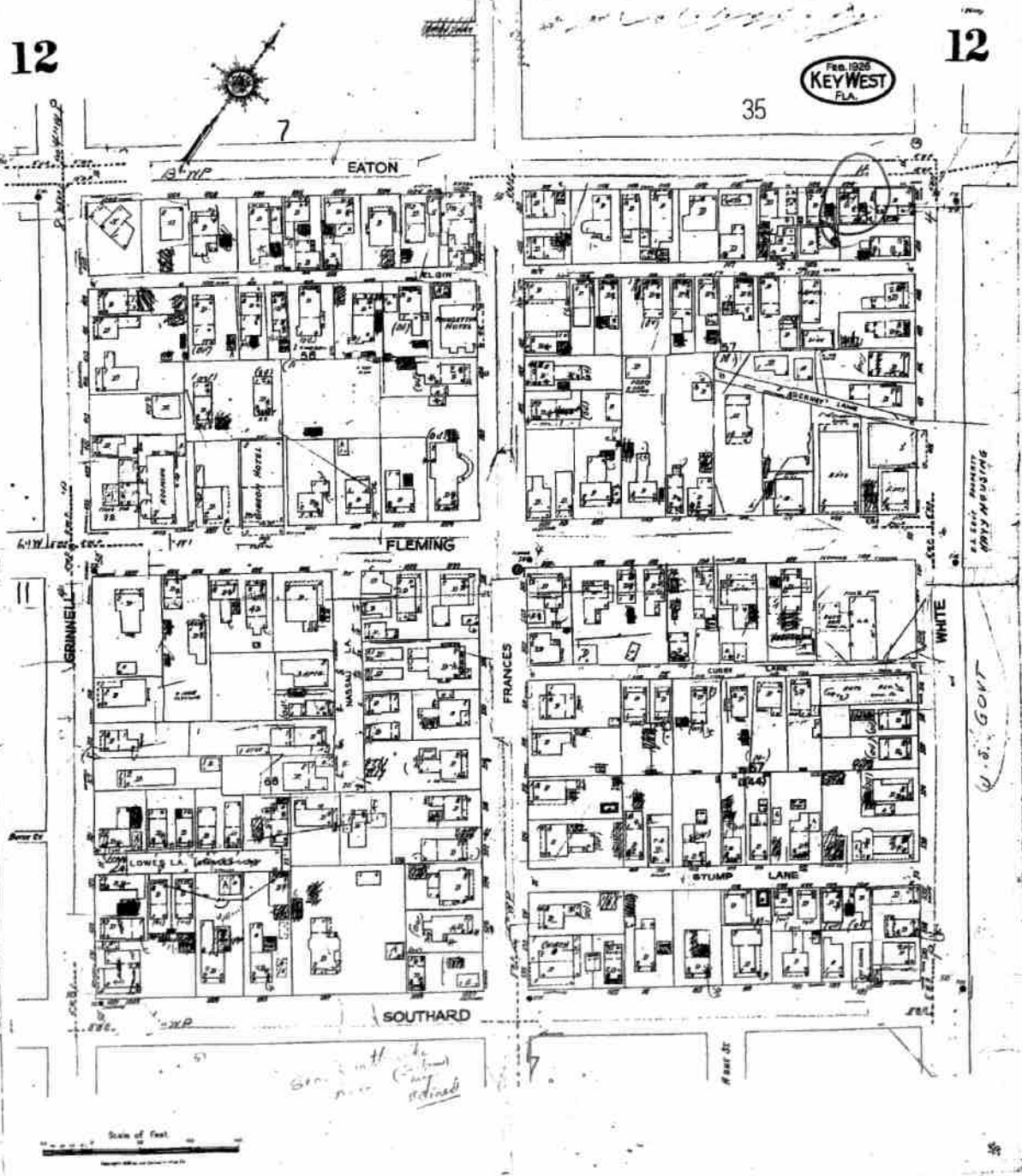
G.W. PIPE

12

12

Feb. 1926
KEY WEST
FLA.

35



The Sanborn Library, LLC

This Sanborn® Map is a certified copy produced by Environmental Data Resources, Inc. under arrangement with The Sanborn Library, LLC. Information on this Sanborn® Map is derived from Sanborn field surveys conducted in:

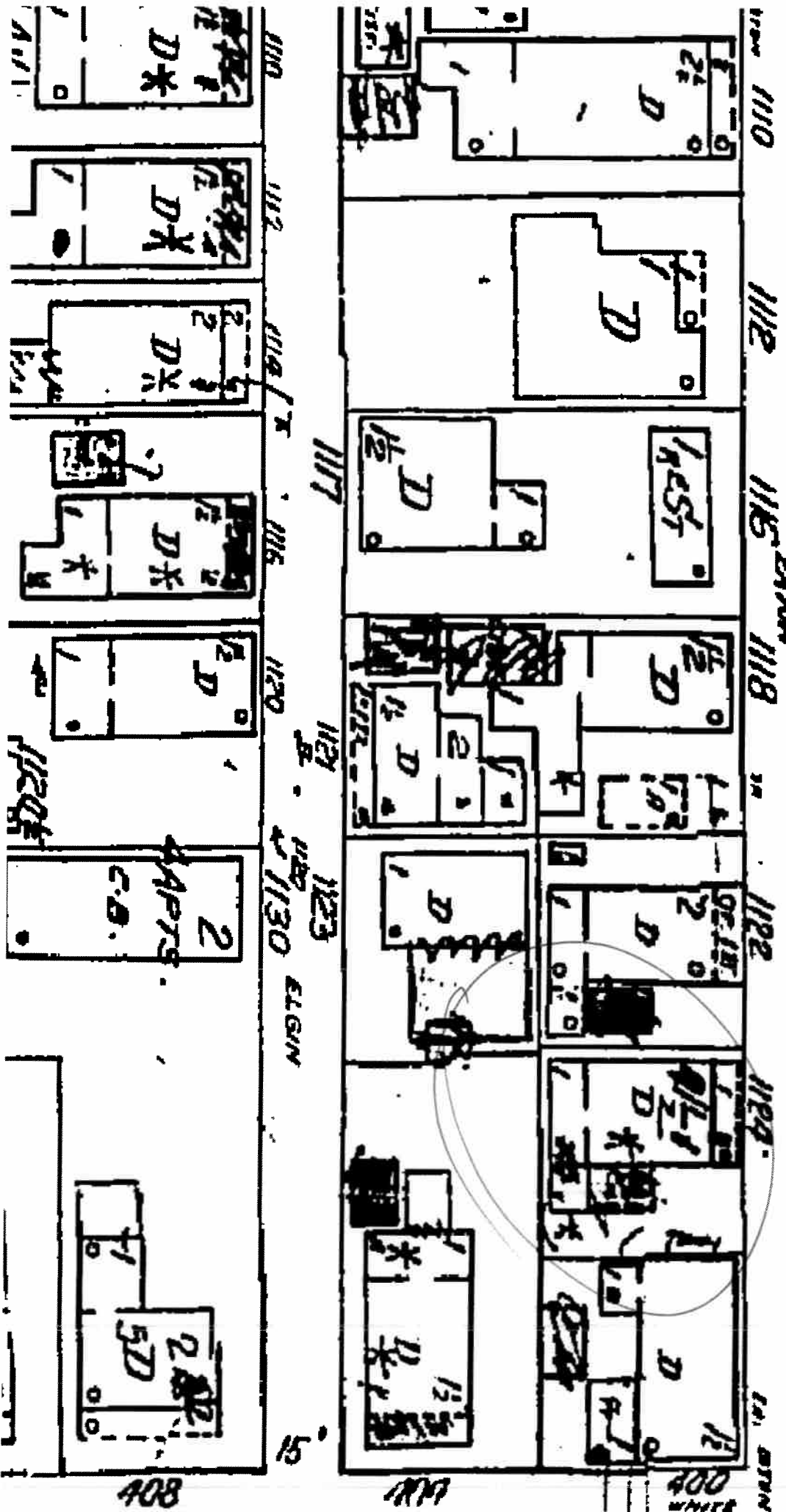
Copyright © 1962 The Sanborn Library, LLC NFS
Year FDR Research Associate

Reproduction in whole or in part of any map of The Sanborn Library, LLC may be prohibited without prior written permission from The Sanborn Library, LLC.

1962

13

55
18'



408

1117

400
WHITE