

Site Plans

KEY WEST BIGHT RETAIL SHOP

MARGARET STREET PLAZA KEY WEST, FLORIDA



RECEIVED
August 1, 2011
KW Planning Dpt

PLANNER

TREPANIER & ASSOCIATES, INC.

402 APPELROUTH LANE, P.O. BOX 2155
KEY WEST, FL 33045-2155
(305)293-8983

ARCHITECTS

FRANK DAUGHTRY ARCHITECTS

200 EAST GOVERNMENT STREET #240A
PENSACOLA, FLORIDA 32502
(850)433-3023

ARCHITECTS

WILLIAM P. HORN ARCHITECT P.A.

915 EATON STREET
KEY WEST, FLORIDA 33040
(305)296-8302

STRUCTURAL ENGINEER

SEA TECH OF THE FLORIDA KEYS, INC.

830 CRANE BOULEVARD
SUMMERLAND KEY, FLORIDA 33042
(305)294-9993

CIVIL ENGINEER

PEREZ ENGINEERING & DEVELOPMENT, INC.

1010 KENNEDY DRIVE, SUITE #400
KEY WEST, FLORIDA 33040
(305)293-9440

LEED COMMISSIONING AUTHORITY

BUILDING ENERGY SCIENCES

733 GULF BEACH HIGHWAY
PENSACOLA, FLORIDA 32507
(850)390-4117

ELECTRICAL ENGINEER

ANTHONY L. DAVIS, P.E.

3035 WHITLEY LANE
PACE, FLORIDA 32571
(850)995-2548

MECHANICAL ENGINEER

JOHNSON PEADEN ENGINEERING, INC.

329 BROOKS STREET SE
FORT WALTON BEACH, FLORIDA 32548
(305)244-6189



SeaTech inc.
830 CRANE BOULEVARD
SUGARLOAF KEY, FLORIDA
(305) 294-9993
C.A. #28984

TITLE SHEET

KEY WEST BIGHT
RETAIL SHOP
MARGARET STREET PLAZA
KEY WEST, FLORIDA

REVISIONS

JOB: 11-217

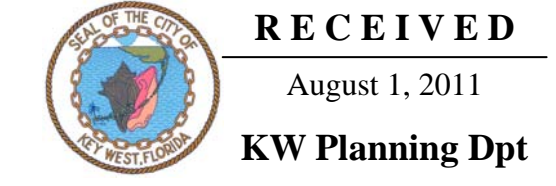
ISSUE DATE: 07-28-11

DRAWN: EKM

G001

ABBREVIATIONS

A &	AND ANCHOR BOLT ACCESS FLOOR ACOUSTICAL ACOUSTICAL CEILING TILE ARISE DRAIN ADDENDUM ADDITIONAL ADJUSTABLE ADJACENT ADMINISTRATION ABOVE FINISH FLOOR AIR HANDLING UNIT ALTERNATE ALUMINUM ANNUNCIATOR ACCESS PANEL ARCHITECTURAL PRECAST CONCRETE APPROXIMATE ARCHITECTURAL ACOUSTICAL TILE AUTOMATIC ACOUSTICAL WALL TREATMENT	D	DEPTH OR DEEP DEMOLITION DEPRESSION DEPARTMENT DETAILS DRINKING FOUNTAIN DIAMETER DIAGNOSTIC DIFFUSER DIMENSION DISPENSER DISTRIBUTION DIVISION DUMMAY JOINT DOWN DEMOUNTABLE PARTITION DATA PROCESSING DOOR DOWNSPOUT DUMBWAITER DRAWING DOWELS	F	FLASH FLASHING FLEXIBLE FLANGE FLUORESCENT FIRE PROOFING FRAMING FULL SIZE FLOOR SINK DIFFUSER FOOT/FEET FOOTING FIN TUBE RADIATION FURRING FUTURE	M	MECH MEMBRANE METAL MEZZANINE MANUFACTURER MANHOLE MATERIAL HANDLING CONVEYOR MINIMUM MIRROR MISCELLANEOUS MASONRY OPENING MONOTHIC METAL PAN CEILING MULTI-PURPOSE UNIT MOUNTED MOTOR MULLION	S	SCHED SCHEDULE SD SOAP DISPENSER SMD SMOKE DAMPER SOAP DISPENSER SECT SECTION SECY SECRETARY SF STORE FRONT SF SQUARE FOOT SG SEMI GLOSS SH SHOWER SHD SHOWER HEAD SHT SHEET SHTG SHEATHING SIM SIMILAR SL SEALER SLNT SLEEVE SM SURFACE MOUNTED SNC SANITARY NAPKIN SND CABINET SANITARY NAPKIN DISPOSER SOG SLAB ON GRADE SP STANDPIPE SPC SPECIMEN PASS THROUGH CABINET SPECIFICATIONS SPLY SINGLE PLY ROOF SQ SQUARE SQ YD SQUARE YARD SR SERVICE RECEPTOR SS SERVICE SINK SST STAINLESS STEEL ST OPENING ST STONE TILE STC SOUND TRANSMISSION STD STANDARD STL STEEL STN STONE STNL STONE LEDGE STOR STORAGE STRUCT STRUCTURAL STS STEEL STRUCTURE SUPV SUPERVISOR SUSP SUSPENDED SW STEEL WINDOWS SW SWITCH SWD SOFTWOOD SYM SYMMETRICAL	W	W W W W/O WC WC WD WDW WG WH WHCH WHTR WR WS WSCT WSF WT WT WW WWF WIDTH/WIDE WIDE FLANGE WITH WITHOUT WATER CLOSET WALL COVERING WOOD WINDOW WALL GUARD WALL HYDRANT WHEELCHAIR WATER HEATER WATERPROOF WASTE RECEPTACLE WEATHERSTRIP WAINSCOT WELDED SHEET FLOORING WINDOW TREATMENT WEIGHT WOOD WINDOW WELDED WIRE FABRIC																				
B	BA BUILDING ACCESSORY BBD BULLETIN BOARD BC BRICK COURSES BD BOARD BFE BOTTOM FOOTING ELEVATION BG BUMPER GUARD BIT BITUMINOUS BKT BRACKET BLDG BUILDING BLKG BLOCKING BLT BORROWED LIGHT BLW BELOW BM BEAM BO BY CONTRACTING OFFICER/CONTR	E	EXISTING EPOXY COATING EPOXY FLOORING EXTERIOR INSULATION AND FINISH SYSTEM EXPANSION JOINT ELEVATION ELECTRIC CABINET ELEC ELECTRICAL ELEV ELEVATOR EMERG EMERGENCY ENCL ENCLOSURE ENTR ENTRANCE EO ELECTRICAL OUTLET EP EXPLOSION PROOF EQ EQUAL EQUIP EQUIPMENT EWC ELECTRIC WATER COOLER EXA EXHAUST AIR EXC EXCAVAT-E/-ED/-ION EXH EXHAUST HOOD EXIST EXISTING EXP EXPANSION EXT EXTERIOR ELECTRIC CABINET ELECTRIC WATER COOLER EXHAUST AIR EXCAVATE-E/-ED/-ION EXHAUST HOOD EXISTING EXPANSION EXTERIOR	G	GAL GALLONS GALV GALVANIZED GB GRAB BAR GC GENERAL CONTRACTOR GEN GENERATOR GEN GENERAL GL GLASS GMU GLASS MASONRY UNIT GR GRADE GRB GRADE BEAM GWB GYPSUM WALL BOARD GYP GYPSUM SHEATHING	H	HIGH HOSE BIB HD HAND DRYER HDCP HANDICAP HDR HEADER HDW HARDWARE HM HOLLOW METAL HORIZ HORIZONTAL HPT HIGHPOINT HR HOUR HT HEIGHT HTR HEATER HVAC HEATING, VENTILATING, AIR CONDITIONING HW HOT WATER HWD HARDWOOD	I	IC INTERCOM ICF ICE MAKING MACHINE WITH FILTRATION SYSTEM ID INSIDE DIAMETER IN INCH INSUL INSULATION INT INTERIOR ISO ISOLATION	J	JAN JANITOR JB JUNCTION BOX JST JOIST JT JOINT	K	KO KNOCK OUT	L	ANGLE LAVATORY LAV LAVATORY LB POUND LDRP LABOR, DELIVERY AND PREP LCD LINEAR CEILING DIFFUSER LF LINE FIGURED LIN LINEAR LKR LOCKER LLH LONG LEG HORIZONTAL LLV LONG LEG VERTICAL LMC LINEAR METAL CEILING LOC LOCATION OR LOCATE LPT LOW POINT LS LAWN SPRINKLING LT LIGHT LTG LIGHTING LVR LOUVER LWC LINEAR WOOD CEILING	N	NOT APPLICABLE NOT IN CONTRACT NO NUMBER NOM NOMINAL NRC NOISE REDUCTION COEFFICIENT NOTE NOT TO SCALE	O	ON CENTER OD OUTSIDE DIAMETER OFF OFFICE OH OVERHEAD OP OPERABLE PARTITION OPER OPERATOR OPNG OPENING OPP OPPOSITE ORD OVERFLOW ROOF DRAIN	P	PART PARTITION PB PUSH BUTTON PC PRECAST CONCRETE PCD PAPER CUP DISPENSER PED PEDESTAL PL PLATE PL PROPERTY LINE PLAM PLASTIC LAMINATE PLBG PLUMBING PLS PLASTER PLW PLYWOOD PNL PANEL PR PAIR PRELIM PRELIMINARY PRES PLASTIC RESIN PRESS PRESSURE PRIM PRIMARY PROJ PROJECTION PRV POWER ROOF VENTILATOR JOIST PTC PAPER TOWEL CABINET PTR PRINTER PVC POLYVINYL CHLORIDE	Q	QUARRY TILE	R	RADIUS RISER RAD RADIATION RB RESILIENT BASE RCP REFLECTED CEILING PLAN RD ROOF DRAIN RE RELOCATE EXISTING REC RECESSED REF REFERENCE REFR REFRIGERATOR REG REGISTER REINF REINFORCE/-ED/-ING REQD REQUIRED RES RESINOUS FLOORING RET RETAINING REV REVERSE RF RESILIENT FLOOR RH ROOF HATCH RM ROOM RO ROUGH OPENING RS ROUGH SLAB	T	TAN TANGENT TBD TACKBOARD TC TIME CLOCK TCAB TOWEL CABINET TDISP TISSUE DISPENSER TDR TRENCH DRAIN TEL TELEPHONE TEMP TEMPERATURE TER TERRAZZO TG TONGUE & GROOVE THRES THRESHOLD TPH TOILET PAPER HOLDER TR TREAD TRANSF TRANSFORMER TS TUBE SECTION TV TELEVISION TYP TYPICAL	U	URINAL UNDERCUT UFD UNDER FLOOR DUCT UG UNDERGROUND UH UNIT HEATER UNFIN UNFINISHED UNO UNLESS NOTED OTHERWISE US UTILITY SHELF UTIL UTILITY	V	VC VA SUPPLIED CONTRACTOR INSTALLED VCAB VALVE CABINET VCT VINYL COMPOSITION TILE VENT VENTILATION VERT VERTICAL VEST VESTIBULE VR VAPOR RETARDER VTR VENT THROUGH ROOF VV VA SUPPLIED VA INSTALLED
C	CHANNEL CUP DISPENSER CAB CABINET CC CONTRACTOR SUPPLIED/ CONTRACTOR INSTALLED CG CORNER GUARD CH COAT HOOK CJT CONTROL JOINT CCTV CLOSED CIRCUIT TELEVISION CD COLLING DOOR CGR COLLING GRILLE CL CENTER LINE CL CLASS CLG CEILING CLR CLEAR CM CONSTRUCTION MANAGER CMU CONCRETE MASONRY UNIT CO CLEANOUT CO CASED OPENING COL COLUMN COMB COMBINATION-ED CONC CONCRETE CONF CONFERENCE CONN CONNECT-E/-ED/-ION CONST CONSTRUCTION CONT CONTINUOUS CONTR CONTRACTOR COORD COORDINATE CORR CORRIDOR CPT CARPET CT CERAMIC TILE CTR CENTER CTSK COUNTERSUNK CUH CABINET UNIT HEATER CW CURTAIN WALL CWL COLD WATER CYL CYLINDER	F	FIRE ALARM FIRE BLANKET FD FLOOR DRAIN FDN FOUNDATION FDV FIRE DEPARTMENT VALVE FE FIRE EXTINGUISHER FEC FIRE EXTINGUISHER CABINET FGS FOAM GASKET SEAL FH FIRE HOSE FHP FULL HEIGHT PARTITION FHV FIRE HOSE VALVE FIN FINISH FIXT FIXTURE FL FLOOR FL FLOW LINE	M	MIDDLE MANUAL MATL MATERIAL MAX MAXIMUM MBD MARKER BOARD MC MEDICINE CABINET MCU MODULAR COOLING																										

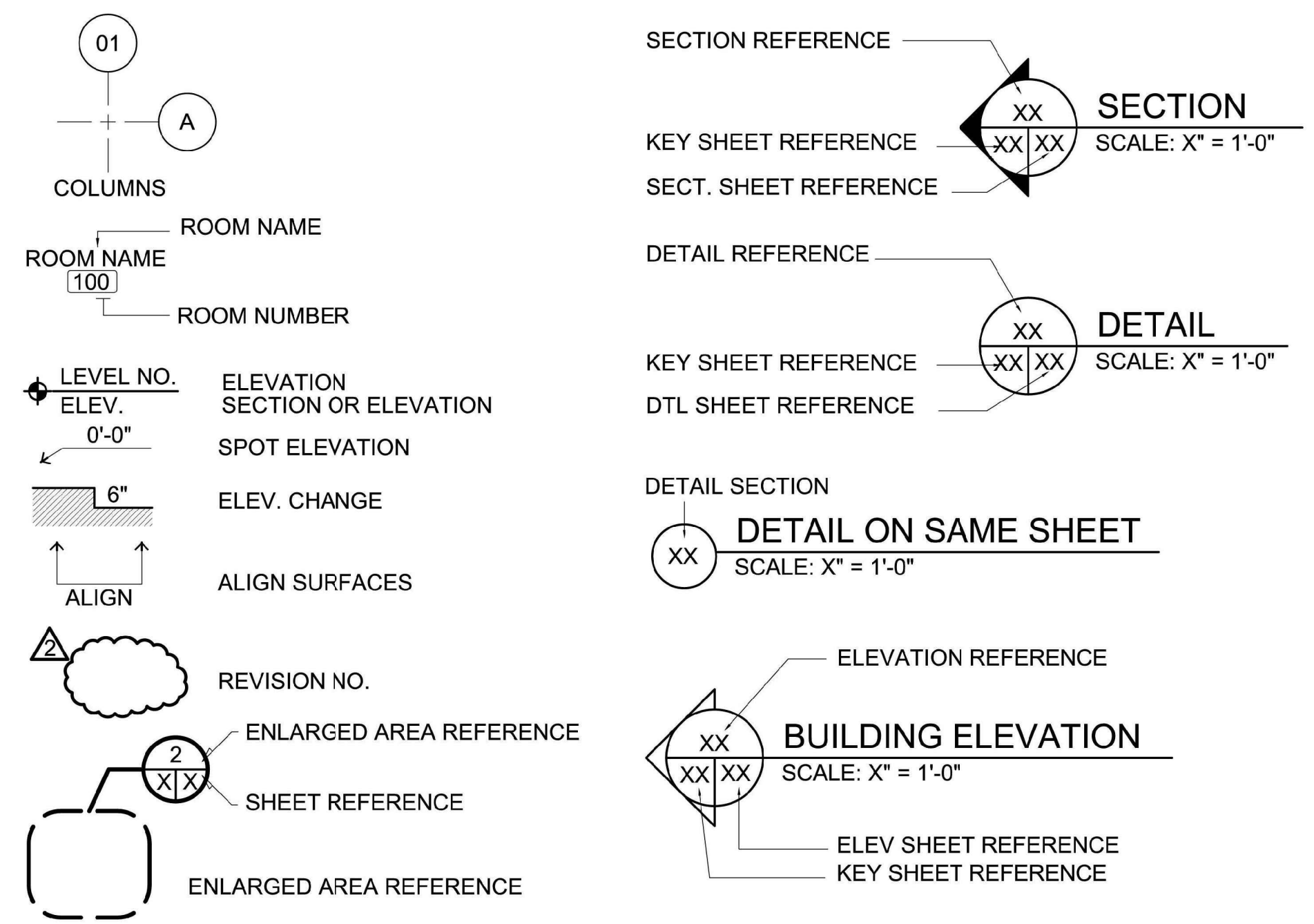


SeaTech Inc.
830 CRANE BOULEVARD
SUGARLOAF KEY, FLORIDA
(305) 294-9993
C.A. #28984

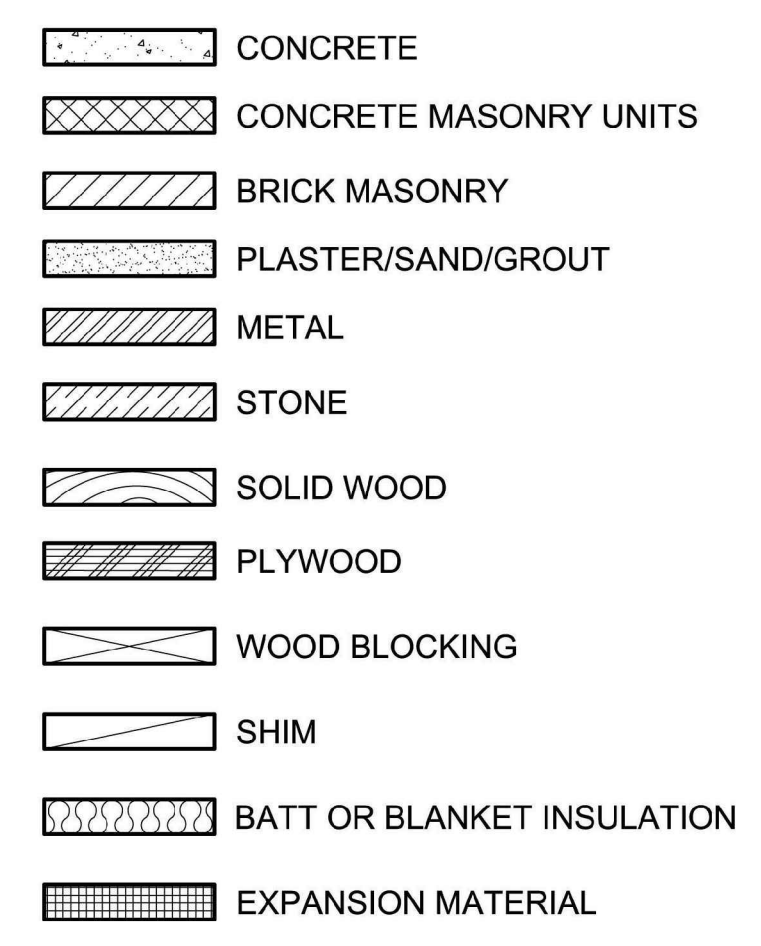
PROJECT INFORMATION &
GENERAL NOTES

KEY WEST BIGHT
RETAIL SHOP
MARGARET STREET PLAZA
KEY WEST, FLORIDA

ARCHITECTURAL SYMBOLS



MATERIAL DESIGNATIONS



PROJECT INFORMATION

APPLICABLE GOVERNING STANDARDS

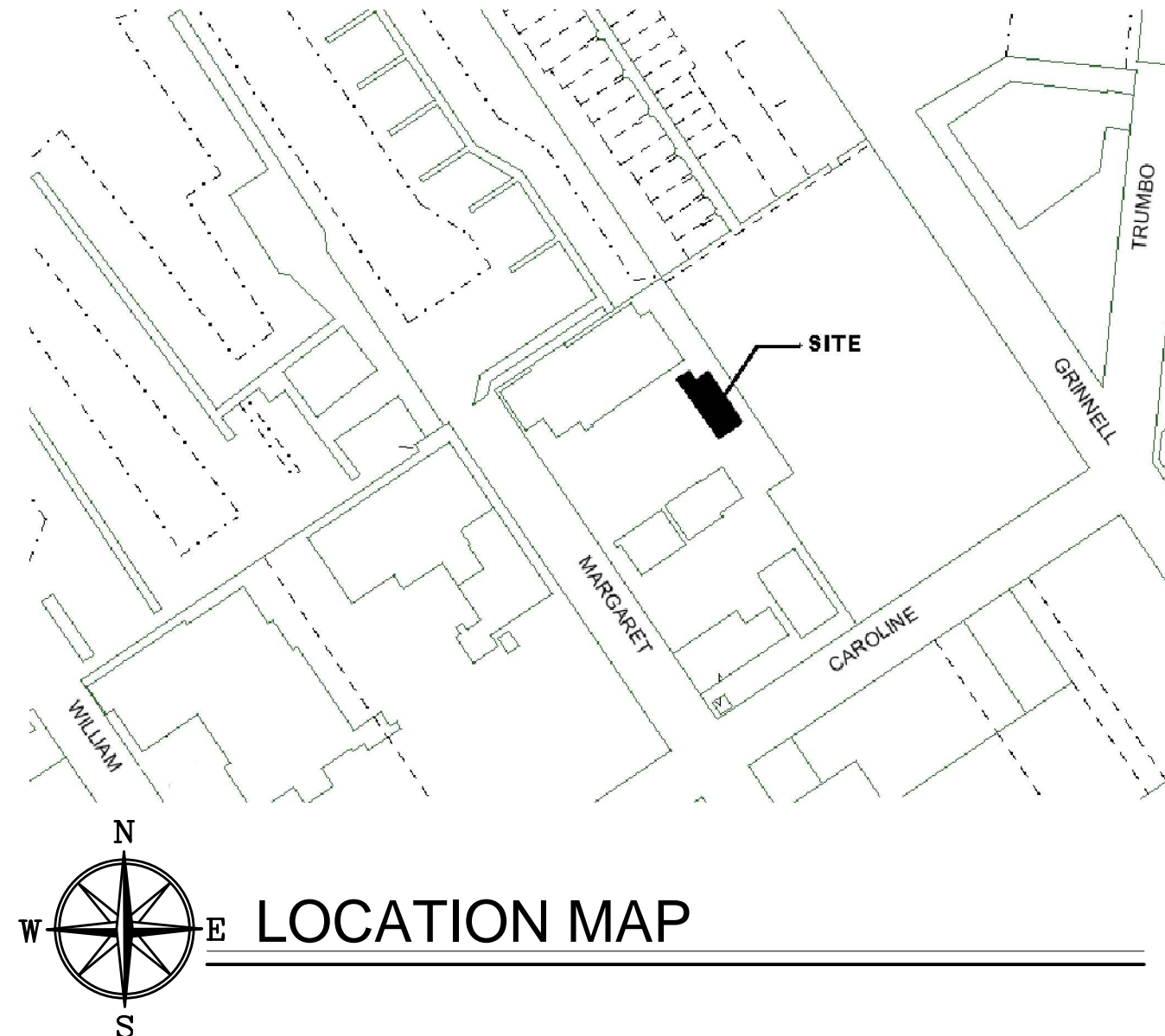
BUILDING CODE: 2007 FLORIDA BUILDING CODE	MECHANICAL CODE: 2007 FLORIDA MECHANICAL CODE
FIRE CODE: NFPA 101, LIFE SAFETY CODE 2007	PLUMBING CODE: 2007 FLORIDA PLUMBING CODE
	ELECTRICAL CODE: 2008 NATIONAL ELECTRICAL CODE



G002

INDEX OF DRAWINGS

- G001 - TITLE PAGE
- G002 - GENERAL NOTES
- G003 - PROJECT DATA
- C101 - SITE PLAN
- C201 - DRAINAGE & GRADING PLAN
- C301 - UTILITY PLAN
- C401 - LANDSCAPE PLAN
- D101 - DEMOLITION PLAN
- LS101 - LIFE SAFETY PLAN
- A101 - FIRST & SECOND FLOOR PLANS
- A102 - REFLECTED CEILING PLANS
- A103 - ROOF PLAN & DETAILS
- A201 - ELEVATIONS
- A202 - ELEVATIONS
- A301 - BUILDING SECTIONS
- A302 - WALL SECTIONS
- A303 - ROOF, FLOOR, WALL, & PARTITION TYPES
- A401 - FINISH PLANS & DETAILS
- A402 - STAIR PLANS & DETAILS
- A501 - DOOR & WINDOW SCHEDULES & DETAILS
- S101 - STRUCTURAL PLANS
- S102 - STRUCTURAL ROOF PLAN & DETAILS
- S103 - STRUCTURAL BUILDING SECTION & DETAILS
- M101 - MECHANICAL PLANS
- M102 - MECHANICAL DETAILS
- P101 - PLUMBING PLANS
- P102 - PLUMBING DETAILS
- E101 - ELECTRICAL NOTES
- E102 - POWER PLAN
- E103 - LIGHTING PLAN



SITE DATA

ZONING DISTRICT: HRCC-2
 FLOOD ZONE: AE 9
 F.I.R.M. - COMMUNITY #120168; PANEL #1516; SUFFIX "K"; DATED: 02-18-2005

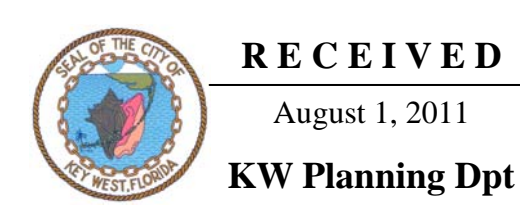
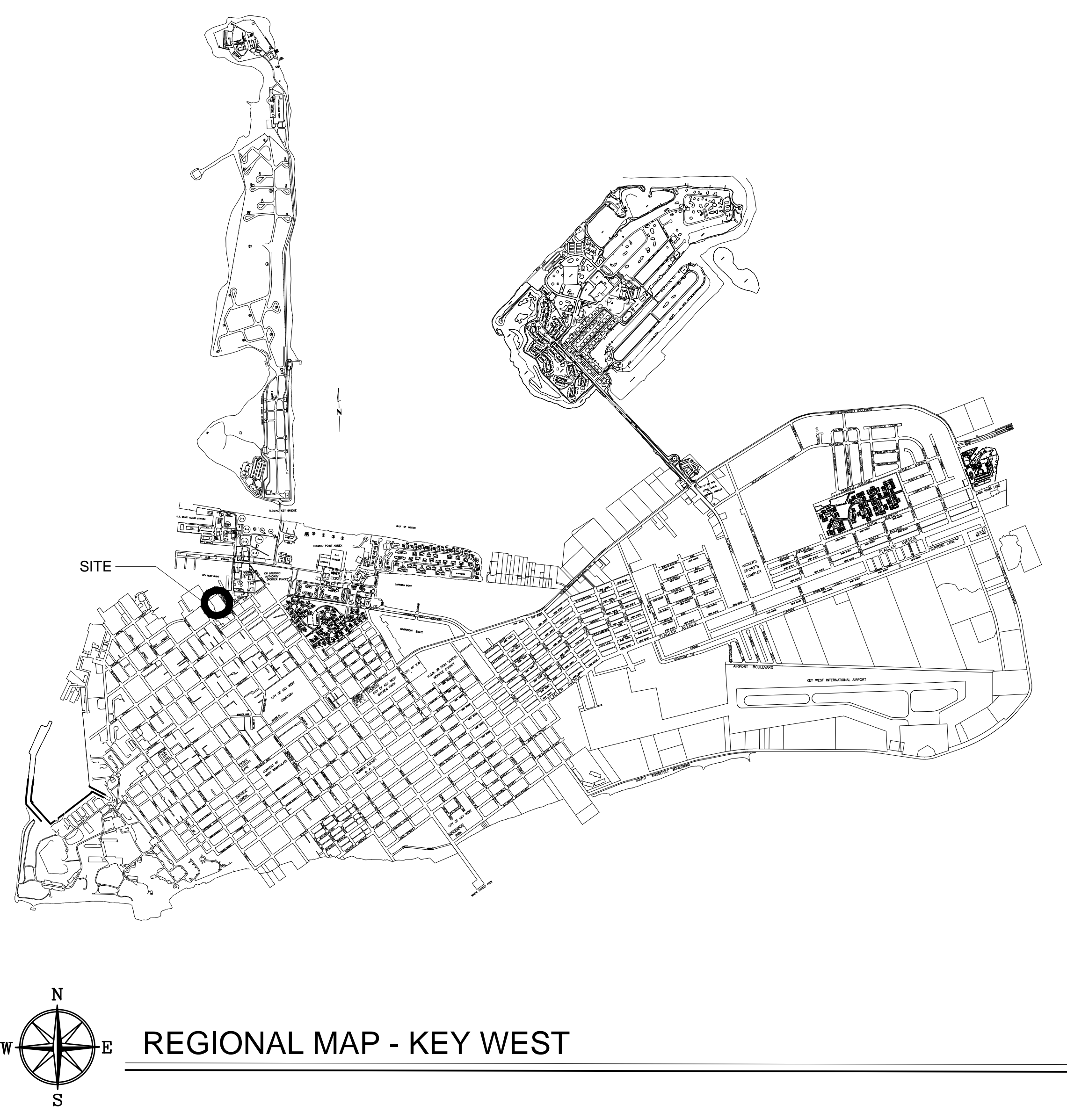
GOVERNING STANDARDS

THIS PROJECT WAS DESIGNED TO MEET THE REQUIREMENTS OF THE FOLLOWING STANDARDS

BUILDING CODE: 2007 FLORIDA BUILDING CODE	PLUMBING CODE: 2007 FLORIDA BUILDING CODE
FIRE CODE: NFPA 101, LIFESAFETY CODE 2007	ELECTRICAL CODE: 2008 NATIONAL ELECTRICAL CODE
MECHANICAL CODE: 2007 FLORIDA MECHANICAL CODE	

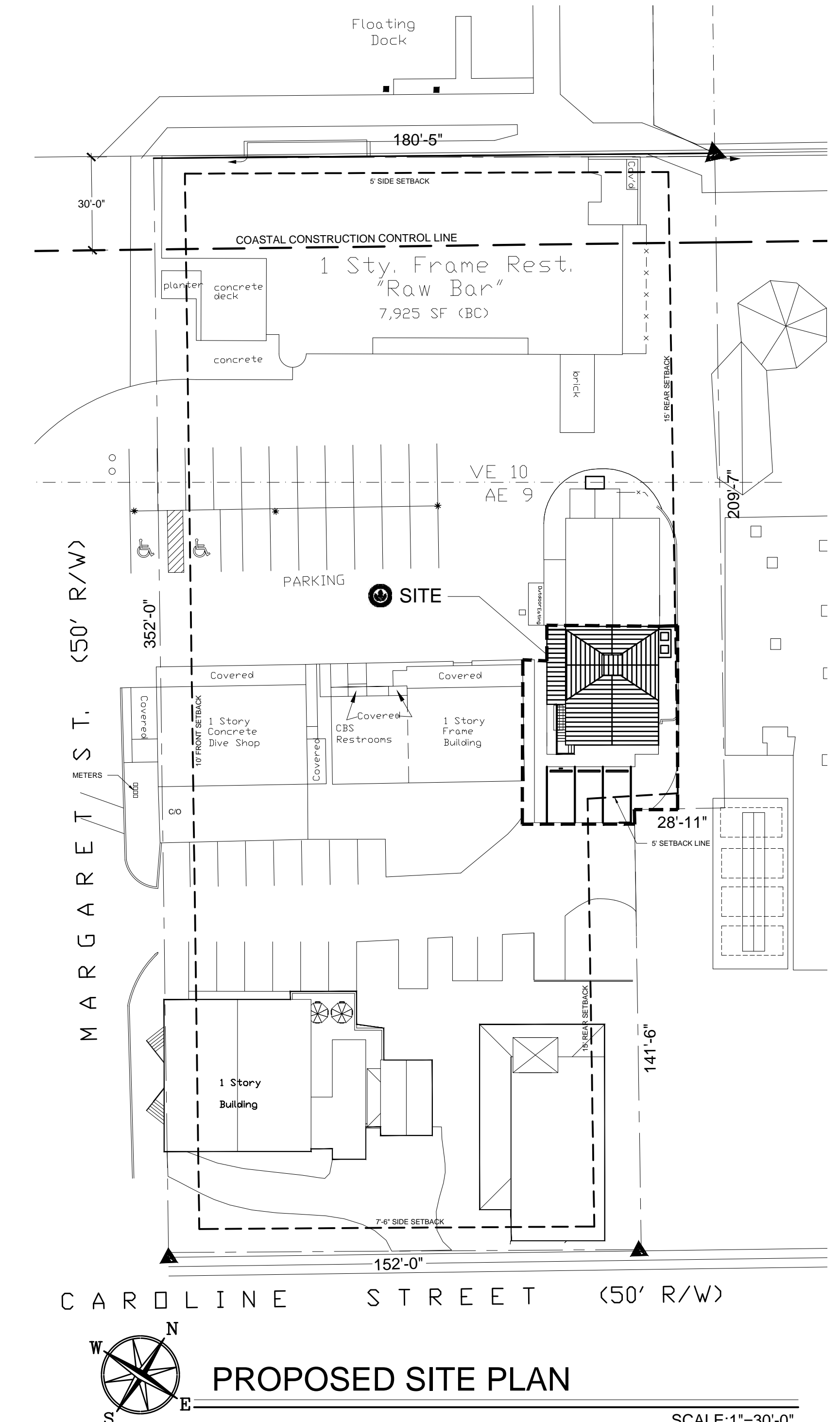
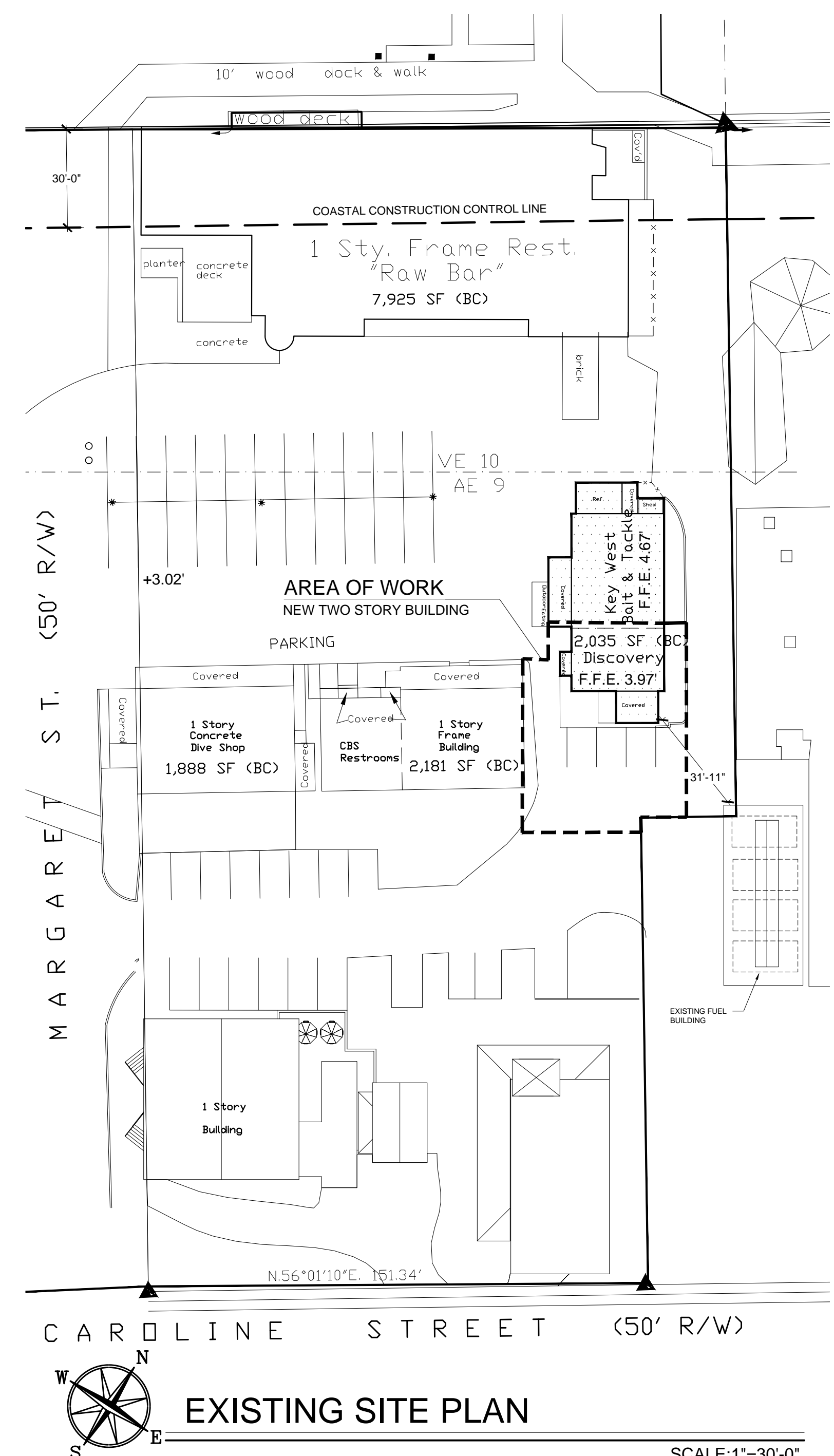
SITE DATA TABLE

	EXISTING CONDITIONS	ALLOWABLE CONDITIONS	PROPOSED CONDITIONS	COMMENTS
DISTRICT	HRCC-2	HRCC-2	NO CHANGE	COMPLIES
LOT SIZE	59,460 SF	59,460 SF	NO CHANGE	COMPLIES
BUILDING AREA	20,518 SF	29,730 SF	21,154 SF	COMPLIES
BUILDING COVERAGE %	34.5%	50% MAX.	35.5%	COMPLIES
IMPERVIOUS COVERAGE	48,990 SF	35,676 SF	NO CHANGE	COMPLIES
IMPERVIOUS COVERAGE %	82.3%	60% MAX.	NO CHANGE	COMPLIES
FLOOR AREA	20,518 SF	29,730 SF	22,071 SF	COMPLIES
FLOOR AREA %	34.5%	50% MAX.	37.1%	COMPLIES
OPEN SPACE	10,470 SF	11,892 SF	NO CHANGE	COMPLIES
OPEN SPACE %	17.6%	20% MIN.	NO CHANGE	COMPLIES
BUILDING HEIGHT	14'-4"	35'	30'-4"	COMPLIES



¹ THE IMPERVIOUS SURFACE AND ITS INVERSE OPEN SPACE IS CONSIDERED NON-COMPLYING STRUCTURE UNDER THE CODE. NON-COMPLYING STRUCTURES ARE REGULATED UNDER CHAPTER 122, ARTICLE II, SEC. 122.27 & 122.28 EXPRESSLY PERMIT NON-COMPLYING STRUCTURES TO BE CONTINUED AND MAINTAINED AS LONG AS THE VALUE OF ANY RECONSTRUCTIONS, RENOVATIONS, OR REPAIRS DO NOT EXCEED 50% OF THE PROPERTY'S APPRAISED OR ASSESSED VALUE. SEC. 122.27 ALSO DISCOURAGES THEIR EXPANSION. IN THIS CASE, PROPOSED WORK DOES NOT EXCEED 50% OF THE VALUE OF THE PROPERTY AND AS A RESULT OF THE WORK THE NON-COMPLYING IMPERVIOUS SURFACE WILL NOT BE EXPANDED.

ACCORDING TO THE MONROE COUNTY PROPERTY APPRAISER'S PROPERTY RECORD INFORMATION THE VALUE OF THE SITE PROPERTY IS APPROXIMATELY \$26,542,944. THE ESTIMATED VALUE OF THE PROPOSED PROJECT IS EXPECTED TO BE APPROXIMATELY \$ (APPROXIMATELY % OF THE ASSESSED VALUE OF MALLORY). GIVEN THE ABOVE, CHAPTER 122, ART. II CLEARLY INDICATES NO VARIANCE IS REQUIRED FOR IMPERVIOUS SURFACE.



SeaTech Inc.
830 CRANE BOULEVARD
SUGARLOAF KEY, FLORIDA
(305) 294-9893
C.A. #28984

PROJECT DATA

**KEY WEST BIGHT
RETAIL SHOP**
MARGARET STREET PLAZA
KEY WEST, FLORIDA

REVISIONS

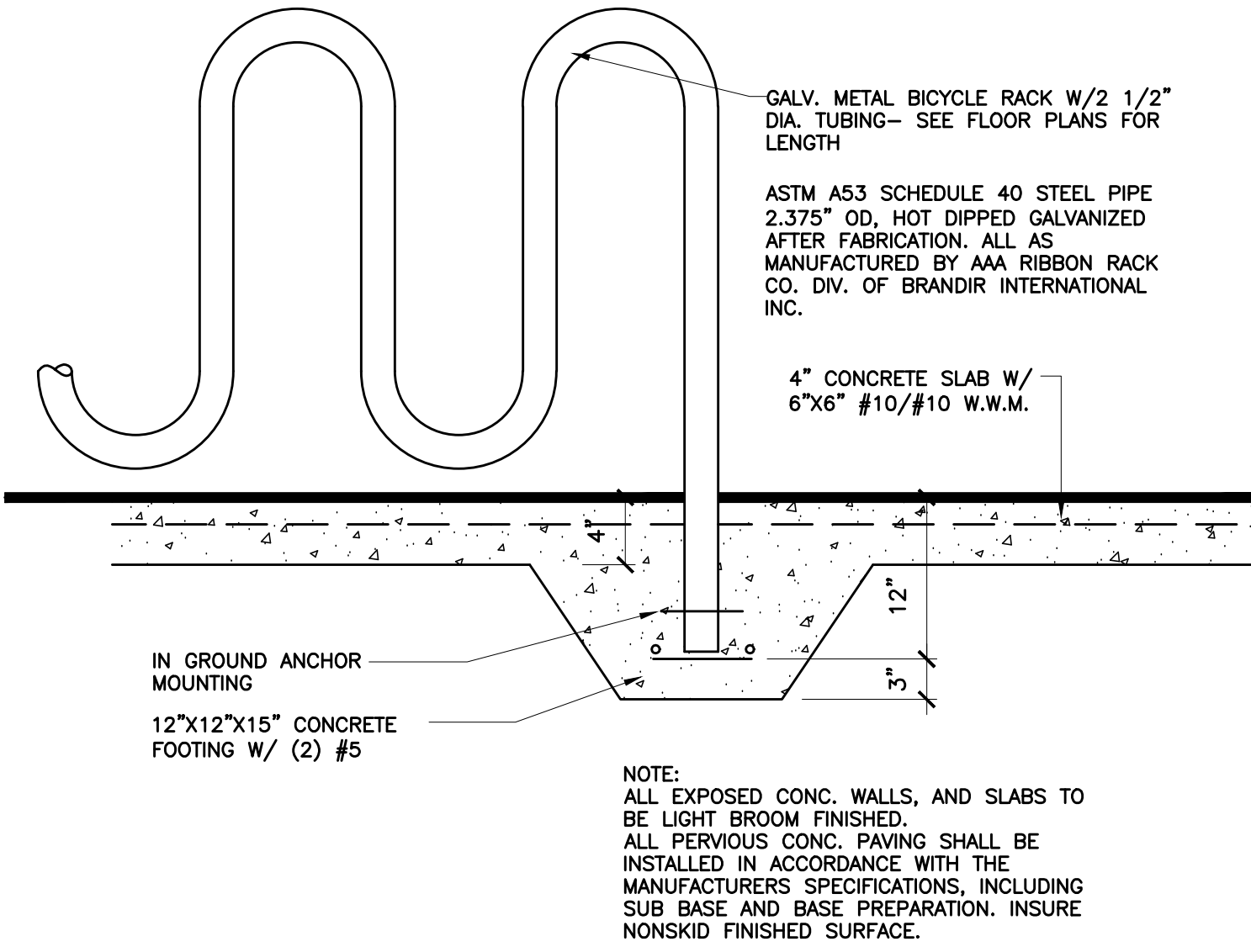
NO.	DATE	DESCRIPTION

JOB: 11-217
 ISSUE DATE: 07-28-11
 DRAWN: EKM

G003

PARKING SUMMARY

REQUIRED SPACES (CURRENT USE): 100 / 3 = 33
 REQUIRE SPACES (PROPOSED USE): 8
 NO ADDITIONAL SPACES PROVIDED SINCE THE USAGE REDUCES THE NUMBER OF SPACES REQUIRED. NO ADDITIONAL SPACES PROVIDED IN ORDER TO SATISFY USGBC LEED CREDIT SS4.4.
 TOTAL ACCESSIBLE SPACES REQUIRED: 2
 TOTAL ACCESSIBLE SPACES PROVIDED : 2

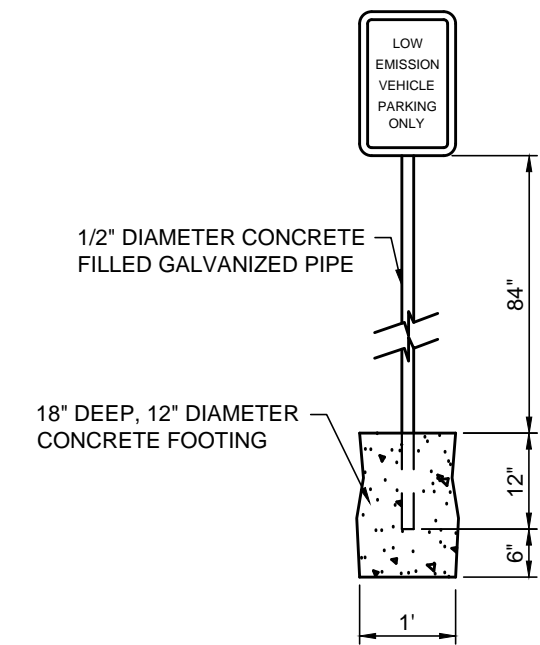


BICYCLE RACK DETAIL

SCALE: 1"=1'-0"

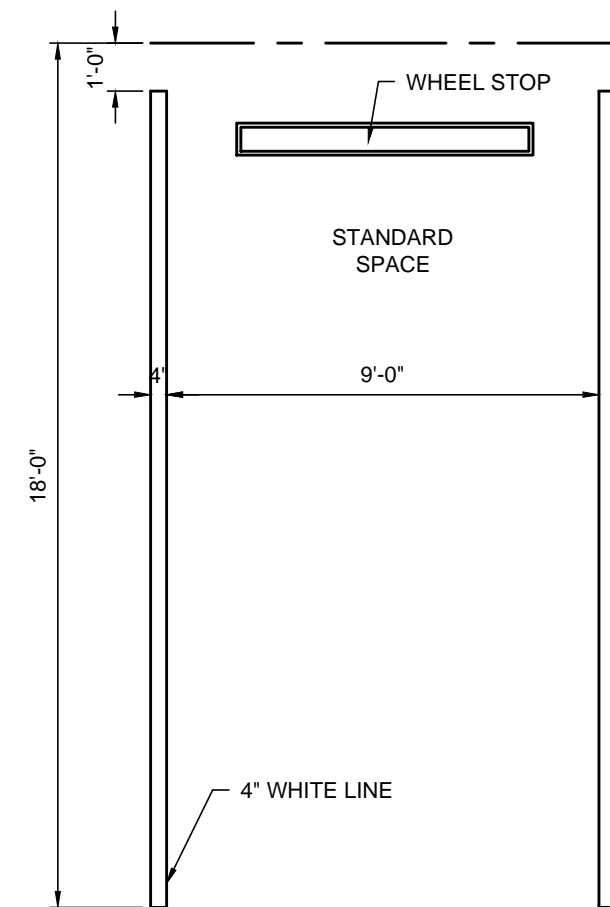


PROVIDE NO SMOKING SIGNS AT EACH ENTRANCE OF NEW BUILDING



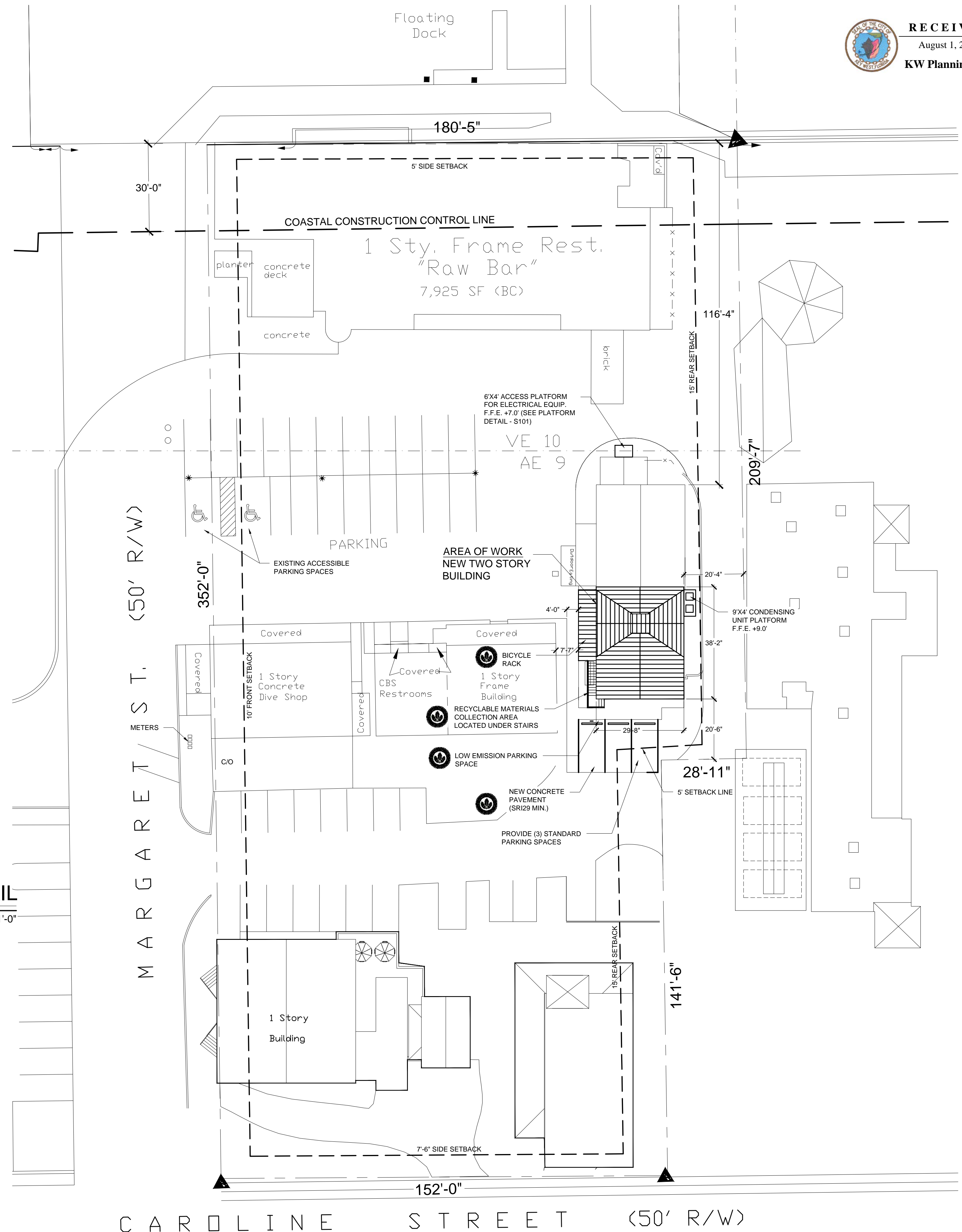
LOW EMISSION PARKING SIGN DETAIL

SCALE: 1/4"=1'-0"



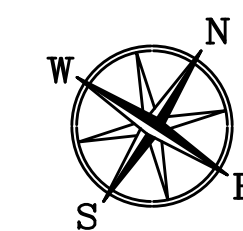
PARKING DETAIL

SCALE: 1/4"=1'-0"



CAROLINE STREET (50' R/W)

MARGARET ST. (50' R/W)



PROPOSED SITE PLAN

SCALE: 1"=20'-0"



RECEIVED
 August 1, 2011
 KW Planning Dpt

SeaTech Inc.
 830 CRANE BOULEVARD
 SUGARLOAF KEY, FLORIDA
 (305) 294-9893
 C.A. #28984

PROPOSED SITE PLAN

**KEY WEST BIGHT
 RETAIL SHOP**
 MARGARET STREET PLAZA
 KEY WEST, FLORIDA

REVISIONS

JOB: 11-217
 ISSUE DATE: 07-28-11
 DRAWN: EKM

C101

BUILDING CODE ANALYSIS:

APPLICABLE BUILDING CODES:

FLORIDA BUILDING CODE (2007)
 FLORIDA FIRE PROTECTION CHAPTER 39 OR NFPA 101 AND 13, 10, ETC.
 FLORIDA ACCESSIBILITY CODE

OCCUPANCY CLASSIFICATION:

CLASSIFICATION OF OCCUPANCY PER FBC: 304.1 BUSINESS GROUP B
 309 MERCANTILE GROUP M
 311.2 MODERATE-HAZARD STORAGE, GROUP S-1

TYPE OF CONSTRUCTION:

TYPE VA (FBC 602.5) - CONSTRUCTION THAT IS ANY MATERIAL PERMITTED BY CODE.

FIRE RESISTANCE RATING FOR BUILDING ELEMENTS: (PER FBC TABLE 601)

STRUCTURAL FRAME: 1 HOUR(S)
 BEARING WALLS: 1 HOUR(S)
 NON-BEARING WALLS AND PARTITIONS (INTERIOR): 0 HOUR(S)
 FLOOR CONSTRUCTION: 1 HOUR(S)
 ROOF CONSTRUCTION: 1 HOUR(S)

FIRE RESISTANCE RATING FOR EXTERIOR WALLS: (PER FBC TABLE 602)

TYPE VA CONSTRUCTION; GROUP M + S-1 OCCUPANCY
 LESS THAN 5'-0": 3 HOUR(S)
 BETWEEN 5'-0" AND 10'-0": 2 HOUR(S)
 BETWEEN 10'-0" AND 2'-0": 1 HOUR(S)
 GREATER THAN 20'-0": 0 HOUR(S)

OCCUPANCY / TENANT SEPERATION:

TENANT SEPERATION WALL: 1 HOUR(S)
 (PER FBC SECTION 708.1 FIRE PARTITIONS)
 FLOOR / CEILING ASSEMBLY: 1 HOUR(S)
 (PER FBC SECTION 711 HORIZONTAL ASSEMBLIES)

BUILDING HEIGHT/NUMBER OF STORIES (WITHOUT SPRINKLER SYSTEM):

ALLOWED: 50'-0" MAXIMUM ABOVE FINISH GRADE / 3 STORIES (FBC TABLE 503) GROUP S-1 IS MOST RESTRICTIVE
 PROPOSED: 30'-4" HIGH, 2 STORIES

MAXIMUM ALLOWABLE BUILDING AREA (WITHOUT SPRINKLER SYSTEM):

MAX ALLOWED: PER S-1 OCCUPANCY 14,000 SQ FT X 3 STORIES= 42,000 SQ FT (FBC TABLE 503)

FBC 503.1.3. BUILDINGS ON SAME LOT. 2 OR MORE BUILDINGS ON THE SAME LOT SHALL BE CONSIDERED AS PORTIONS OF ONE BUILDING IF THE HEIGHT OF EACH BUILDING AND THE AGGREGATE AREA OF BUILDINGS ARE WITHIN THE LIMITATIONS OF TABLE 503 AS MODIFIED BY SECTIONS 504 AND 506.

AREA TABULATION:

EXISTING BAIT AND TACKLE SHOP:	1190 SF
PROPOSED BIGHT RETAIL BUILDING:	2000 SF (1ST AND 2ND FLOOR COMBINED)
EXISTING FISH HOUSE:	2181 SF
EXISTING DIVE SHOP:	1888 SF
TOTAL AGGREGATE AREA	7259 SF

INTERIOR FINISHES:

NEW INTERIOR WALL & CEILING FINISHES (NFPA 38.3.3.2):
 - EXIT ENCLOSURES & EXIT ACCESS CORRDIORS = CLASS A OR B
 - ALL OTHER AREAS = CLASS A, B OR C

NEW INTERIOR FLOOR FINISHES (NFPA 38.3.3.3):
 - EXIT ENCLOSURES = CLASS I OR II

CALCULATED OCCUPANT LOAD FOR EGRESS CAPACITY:

PER NFPA 101 TABLE 7.3.1.2:
 BUSINESS B= 1 PERSON PER 100 GROSS SF
 MERCANTILE M= 1 PERSON PER 30 GROSS SF
 OCCUPANT LOAD FOR 1ST FLOOR = 1000/30= 34 OCCUPANTS
 OCCUPANT LOAD FOR 2ND FLOOR = 1000 SF/100= 10 OCCUPANTS
 TOTAL OCCUPANT LOAD= 44 OCCUPANTS

EMERGENCY LIGHTS MUST MEET ALL ENGINEERING TECHNICAL LETTER 99.4 REQUIREMENTS. THE LETTERING FOR THE EXIT LIGHTS MUST BE RED IAW ETL 99.4 CH. 6.

ILLUMINATED EXIT LIGHT LOCATIONS ARE DESIGNATED BY THE FOLLOWING SYMBOL:

 INDICATES SURFACE MOUNTED ILLUMINATED EXIT LIGHT



RECEIVED

August 1, 2011

KW Planning Dpt

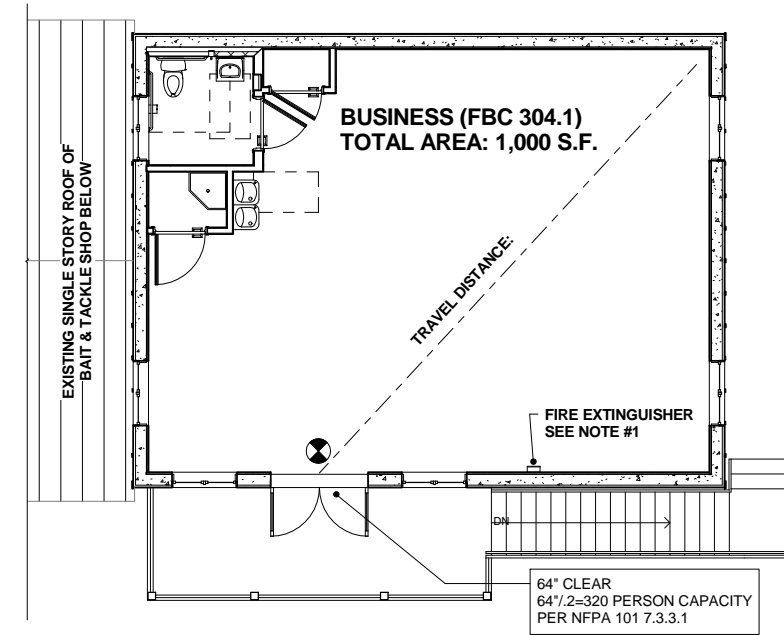
NOTES: THIS SHEET ONLY

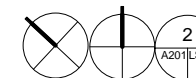
NOTE #1: SEMI- RECESSED FIRE EXTINGUISHER
 10# ABC MULTI-PURPOSE FIRE DRY CHEMICAL
 EXTINGUISHERS BY AMEREX.

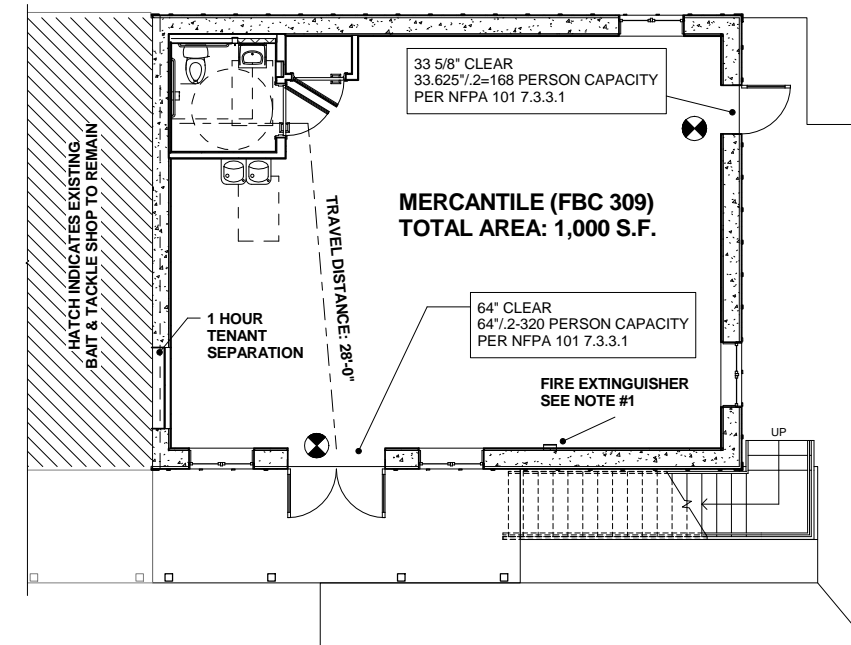
FIRE EXTINGUISHER SIZE & PLACEMENT:
 - MINIMUM RATED SINGLE EXTINGUISHER= 2-A
 - MAXIMUM FLOOR AREA PER UNIT= 3,000 S.F. & 1,000 S.F. ACTUAL
 - MAXIMUM FLOOR AREA FOR EXTINGUISHER= 11,250 S.F. & 1,000 S.F. ACTUAL
 - MAXIMUM TRAVEL DISTANCE TO FIRE EXTINGUISHER= 75 FT

ELEVATORS:
 FBC 2007 11-4.1.1 ACCESSIBLE BUILDING: NEW CONSTRUCTION

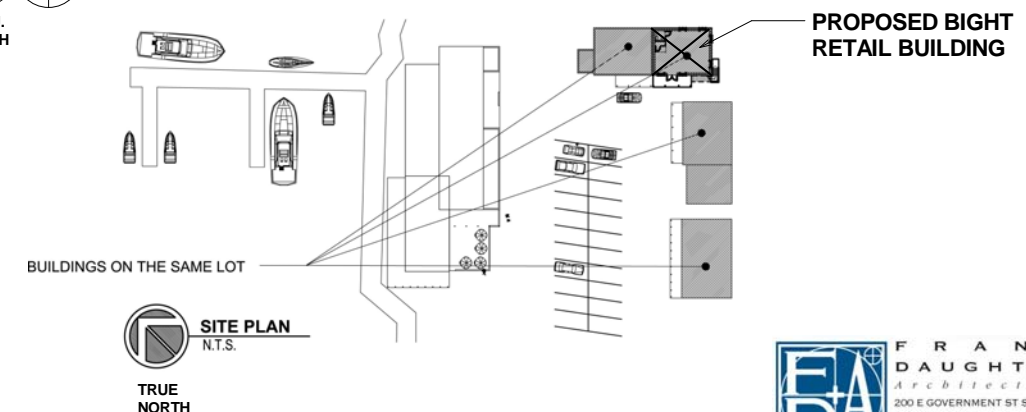
EXCEPTION 1: ELEVATORS ARE NOT REQUIRED IN FACILITIES THAT ARE LESS THAN THREE STORIES OR THAT HAVE LESS THAN 3,000 SQUARE FEET (279 SQUARE METERS) PER STORY UNLESS THE BUILDING IS A SHOPPING CENTER, A SHOPPING MALL, OR THE PROFESSIONAL OFFICE OF A HEALTH CARE PROVIDER, OR ANOTHER TYPE OF FACILITY AS DETERMINED BY THE US ATTORNEY GENERAL.



 2 SECOND FLOOR LIFE SAFETY PLAN
 3/16" = 1'-0"



 1 FIRST FLOOR LIFE SAFETY PLAN
 3/16" = 1'-0"



 SITE PLAN
 N.T.S.
 TRUE NORTH



SeaTech Inc.
 830 CRANE BOULEVARD
 SUGARLOAF KEY, FLORIDA
 (305) 294-9993
 C.A. #28984

FIRST + SECOND FLOOR LIFE
 SAFETY PLAN

KEY WEST BIGHT
 RETAIL SHOP
 MARGARET STREET PLAZA
 KEY WEST, FLORIDA

REVISIONS

JOB: 11-217

ISSUE DATE: 07.27.11

DRAWN:

LS101

JOB: _____

ISSUE DATE: _____

DRAWN: _____

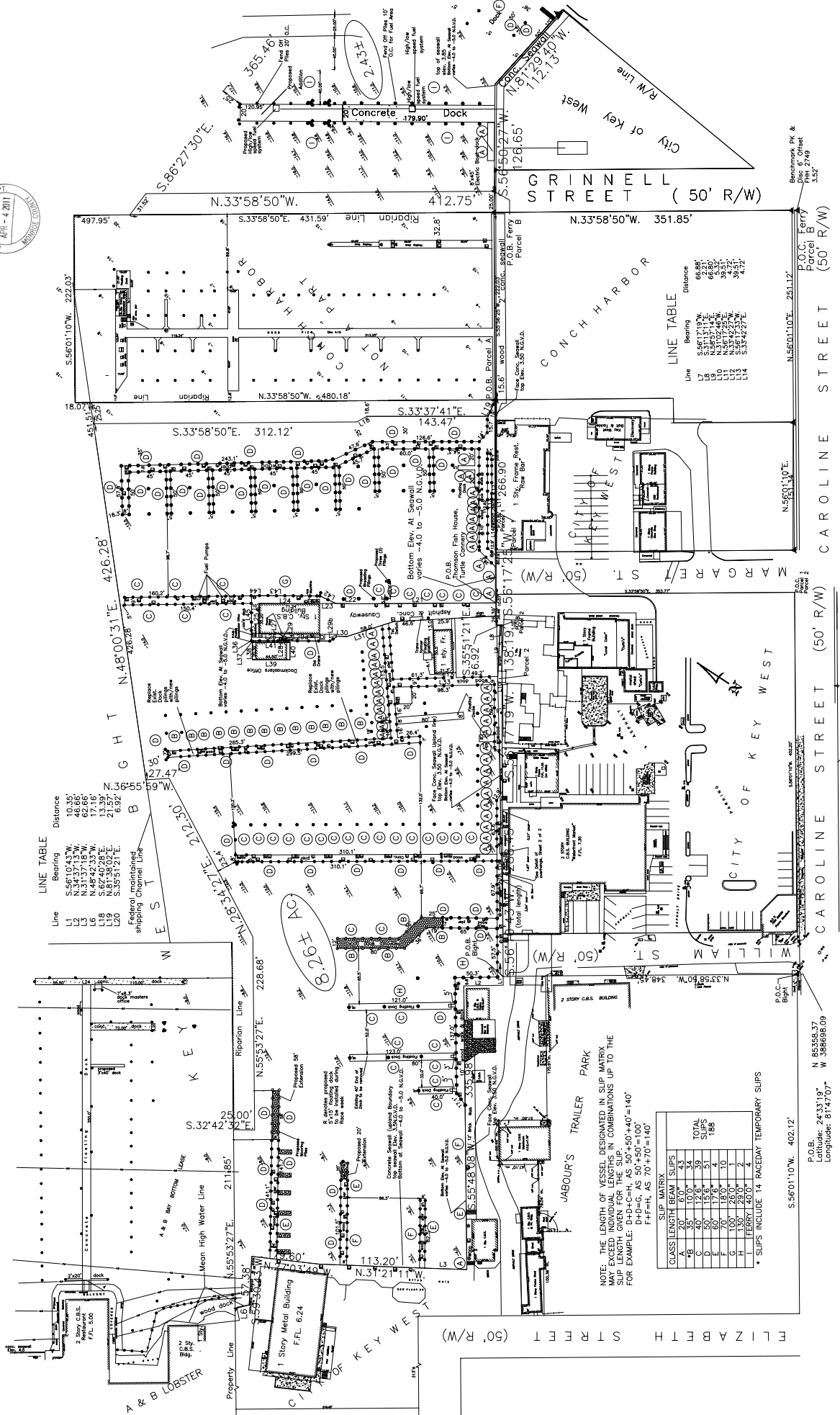
REVISIONS

KEY WEST BIGHT
RETAIL SHOP
MARGARET STREET PLAZA
KEY WEST, FLORIDA

WILLIAM P. HORN
ARCHITECT, P.A.
315 GUNN ST.
KEY WEST, FLORIDA 33040
TEL: (305) 296-8102
FAX: (305) 296-1103 AA 0000000

Seatech Inc.
830 GRANE BOULEVARD
SUGARLOAF KEY, FLORIDA
(305) 294-9993
C.A. #28994





LINE TABLE

Line	Bearing	Distance
L1	S.56°10'43"W.	10.35'
L2	N.34°37'13"W.	46.66'
L3	N.87°42'33"W.	13.39'
L4	S.62°40'28"E.	21.57'
L5	N.61°39'02"E.	6.92'
L6	S.65°51'21"E.	6.92'

Federally maintained shipping Channel Line

SLIP MATRIX

CLASS	LENGTH	NO. OF SLIPS
A	35'	34
B	40'	39
C	50'	41
D	60'	41
E	70'	10
F	100'	2
G	100'	2
H	140'	1
I	FERRY	4

NOTE: THE LENGTH OF VESSEL DESIGNATED IN SLIP MATRIX MAY EXCEED INDIVIDUAL LENGTHS IN COMBINATIONS UP TO THE SLIP LENGTH GIVEN FOR THE SLIP.
 FOR EXAMPLE: D+D+C+H, AS 50'+50'+40'=140'
 F+F+H, AS 70'+70'+140'

* SLIPS INCLUDE 14 RACEDAY TEMPORARY SLIPS

P.O.B.: N 86358.37
 Longitude: 81°47'07"

LINE TABLE

Line	Bearing	Distance
L7	S.56°11'19"W.	66.58'
L8	N.28°55'14"E.	66.58'
L9	N.28°55'14"E.	33.29'
L10	N.28°55'14"E.	33.29'
L11	N.28°55'14"E.	33.29'
L12	N.28°55'14"E.	33.29'
L13	N.28°55'14"E.	33.29'
L14	S.33°42'27"E.	4.72'

Benchmark PK & Parcel B
 P.O.C. Parcel B
 (50' R/W)