

RECEIVED

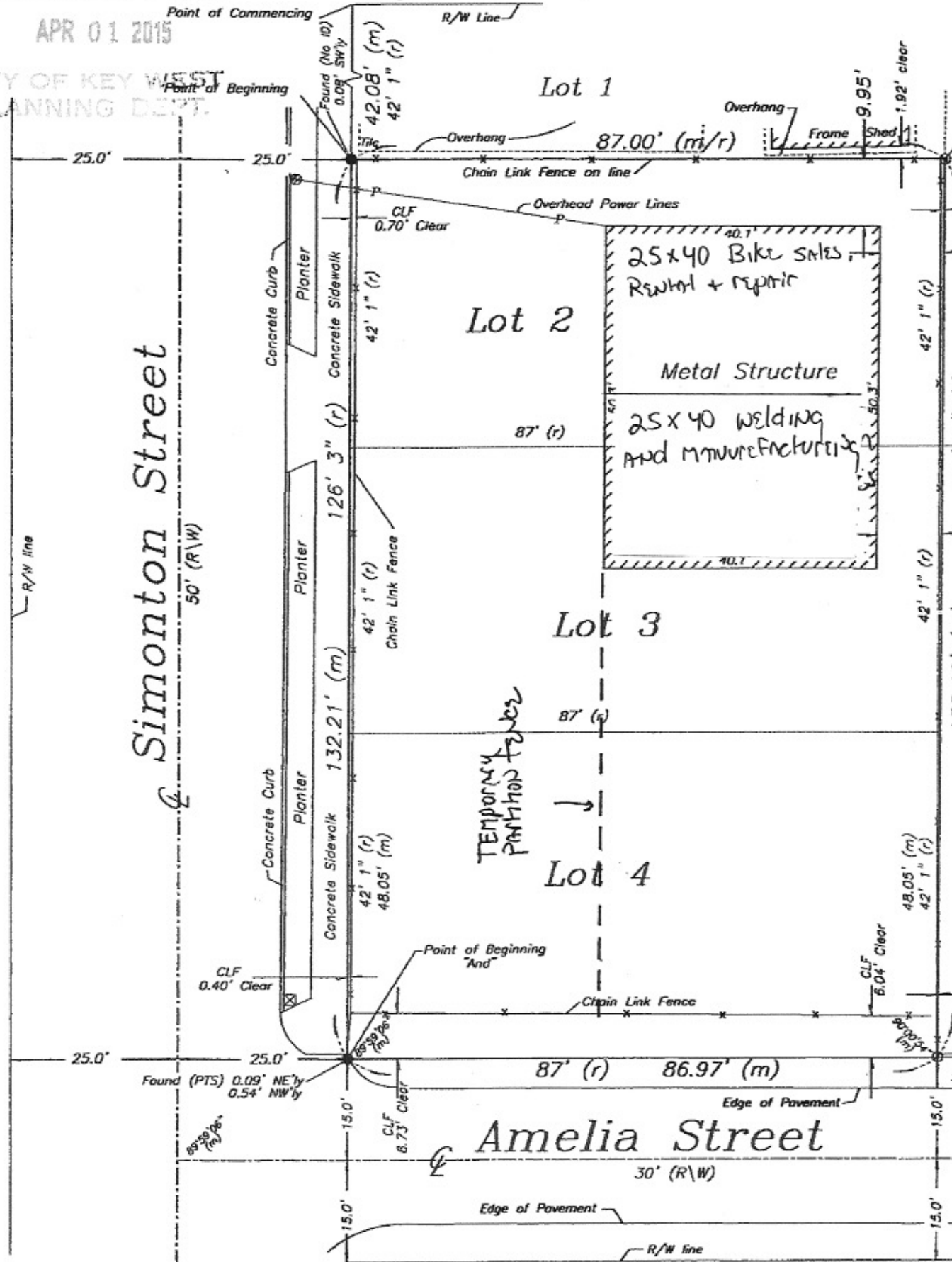
APR 01 2015

CITY OF KEY WEST
PLANNING DEPT.

Virginia St.

Simonton Street

Amelia Street



Point of Commencing

Point of Beginning

Found (No 10)
0.09' SW'y

42.08' (m)
42' 1" (r)

R/W Line

Lot 1

Overhang

87.00' (m/r)

Frame Shed
9.95'
1.92' clear

Overhang

Chain Link Fence on line

Overhead Power Lines

CLF
0.70' Clear

Lot 2

25x40 Bike Sales
Rental + repair

Metal Structure

25x40 Welding
and manufacturing

87' (r)

126' 3" (r)

Concrete Curb

Planter

Concrete Sidewalk

42' 1" (r)

Concrete Curb

Planter

Concrete Sidewalk

42' 1" (r)

Chain Link Fence

Lot 3

TEMPORARY
PARTITION FENCE

87' (r)

132.21' (m)

Concrete Curb

Planter

Concrete Sidewalk

42' 1" (r)
48.05' (m)

CLF
0.40' Clear

Point of Beginning
"And"

Chain Link Fence

CLF
6.04' Clear

48.05' (m)
42' 1" (r)

25.0'

25.0'

Found (PTS) 0.09' NE'y
0.54' NW'y

15.0'

CLF
6.73' Clear

87' (r)

86.97' (m)

Edge of Pavement

Amelia Street

30' (R\W)

Edge of Pavement

R/W line

15.0'

15.0'