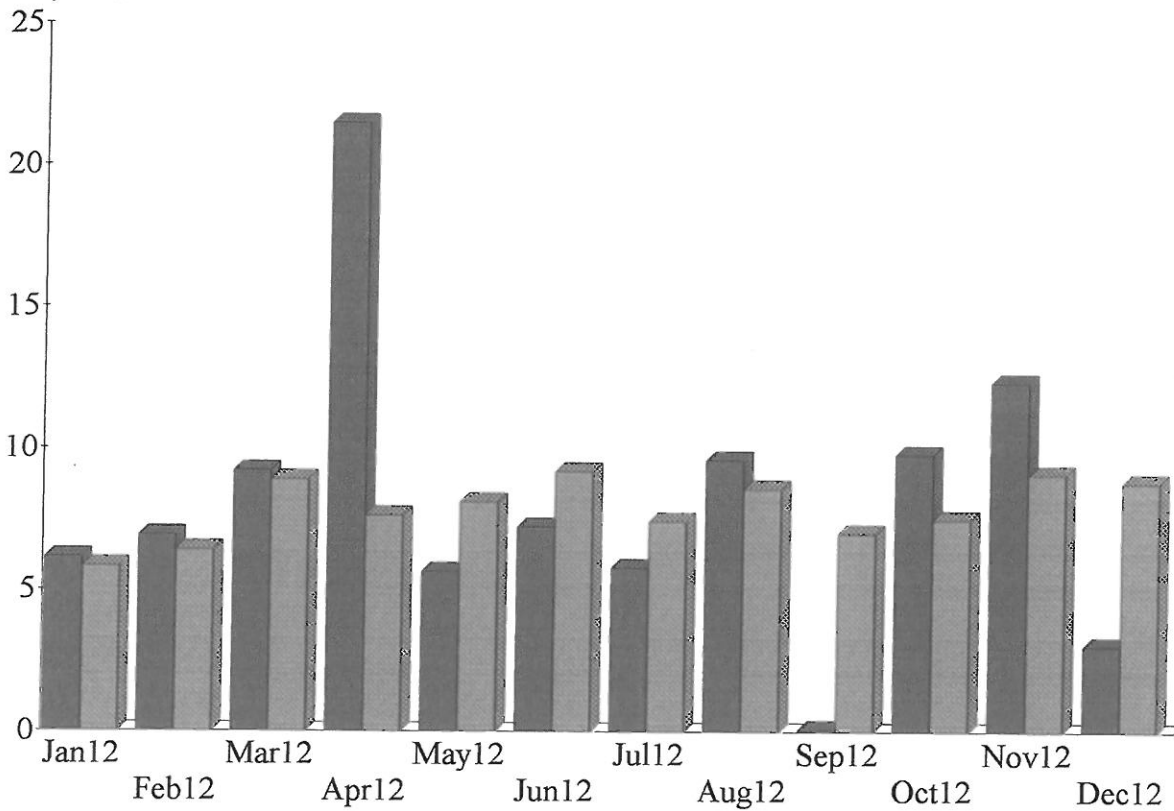


Income and Expense by Month
January through December 2012

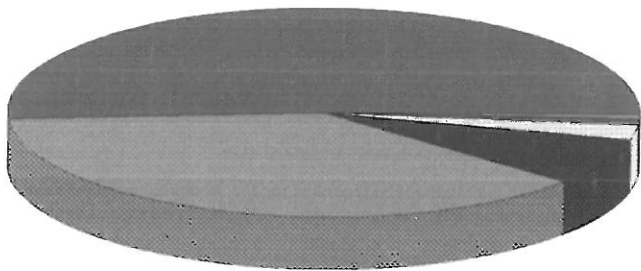
Income
Expense

\$ in 1,000's



Income Summary
January through December 2012

City of Key West Program Revenu	%51.31
Contributions Income	37.68
Fundraising Income	7.40
pavilion rental	2.28
T-shirt Sales	0.66
pay pal donation	0.57
Miscellaneous Income	0.11
Total	\$97,446.85



By Account

Key West Wild Bird Center, Inc.
Profit & Loss
 January through December 2012

	<u>Jan - Dec 12</u>
Ordinary Income/Expense	
Income	
City of Key West Program Revenue	49,998.00
Contributions Income	
Restricted	5,408.00
Unrestricted	17,740.00
Contributions Income - Other	13,567.08
Total Contributions Income	<u>36,715.08</u>
Fundraising Income	7,207.00
Miscellaneous Income	108.29
pavilion rental	2,224.00
pay pal donation	551.98
T-shirt Sales	642.50
Total Income	<u>97,446.85</u>
Gross Profit	97,446.85
Expense	
Automobile Expense	3,869.67
Bank Service Charges	219.79
Chicken	
Auto expense - Chicken run	1,264.67
Chicken Cremation	195.00
Chicken Food	3,773.77
Chicken medicine	1,879.95
Chicken Supplies	574.85
Total Chicken	<u>7,688.24</u>
Continuing Education	386.55
Contributions	100.00
Department of Revenue Tax	200.00
Depreciation Expense	2,124.00
Dues and Subscriptions	45.90
Employee/Volunteer	148.44
Employee/Volunteer Medical Cost	354.00
Fundraising Expense	8.53
Insurance	
Auto	1,736.19
Liability Insurance	1,809.93
Total Insurance	<u>3,546.12</u>
Interest Expense	
Finance Charge	1,188.47
Total Interest Expense	<u>1,188.47</u>
Licenses and Permits	320.00
Marketing	
Marketing Supplies	399.51
Marketing - Other	1,139.31
Total Marketing	<u>1,538.82</u>
Miscellaneous	9.99
Office Supplies	1,079.93
Parking	48.75
Payroll Expenses	
Processing fee	2,019.85
Payroll Expenses - Other	47,016.72
Total Payroll Expenses	<u>49,036.57</u>
Postage and Delivery	178.90

7:07 PM
12/12/13
Cash Basis

Key West Wild Bird Center, Inc.
Profit & Loss
January through December 2012

	<u>Jan - Dec 12</u>
Professional Fees	
Accounting	
Sales Tax	16.00
Accounting - Other	1,305.00
Total Accounting	<u>1,321.00</u>
Total Professional Fees	1,321.00
Program Expense	75.95
Reconciliation Discrepancies	0.00
Repairs	
Computer Repairs	38.00
Total Repairs	<u>38.00</u>
Supplies	
Cleaning Supplies	1,395.17
T-shirt supplies	325.90
Supplies - Other	267.02
Total Supplies	<u>1,988.09</u>
Telephone	2,051.18
Tools & Equipment	1,605.83
Travel & Ent	
Meals	208.75
Total Travel & Ent	<u>208.75</u>
unknown	0.00
Wild Bird	
Wild Bird Cremation	195.00
Wild Bird Food	
Crickets	2,550.00
Meat (liver, raw, etc.)	22.95
Mice, Quail & Rats	3,037.72
Wild Bird Food - Other	7,519.72
Total Wild Bird Food	<u>13,130.39</u>
Wild Bird medicine	673.25
Wild Bird Supplies	904.36
Wild Bird Veterinary Services	366.80
Total Wild Bird	<u>15,269.80</u>
Total Expense	<u>94,651.27</u>
Net Ordinary Income	2,795.58
Other Income/Expense	
Other Income	0.00
Total Other Income	<u>0.00</u>
Net Other Income	<u>0.00</u>
Net Income	<u><u>2,795.58</u></u>

Chicken Expenses Key West Wildlife Center 2012

Payroll Processing Fee	\$2,019.85
Thomas Sweets (Full Salary)	\$25,920
Peggy Coontz (Quarter Salary)	\$5,184
Total Salary	\$33,123.85
Chicken Expenses	\$7,688.24
Insurance Automobile	\$1,736.19
Insurance Liability	\$1,809.93
Professional Fees: Accounting	\$1,305.00
Repairs Computer	\$38
Repairs Equipment	\$0
Supplies: Cleaning Supplies	\$1,395.17
Telephone	\$2,051.18
Tools Equipment	\$1,605.83
Office Supplies (Half)	\$539.97
Automobile Expense (Half)	\$1,934.84
Total Expenses	\$20,104.35
Total	\$53,228.20