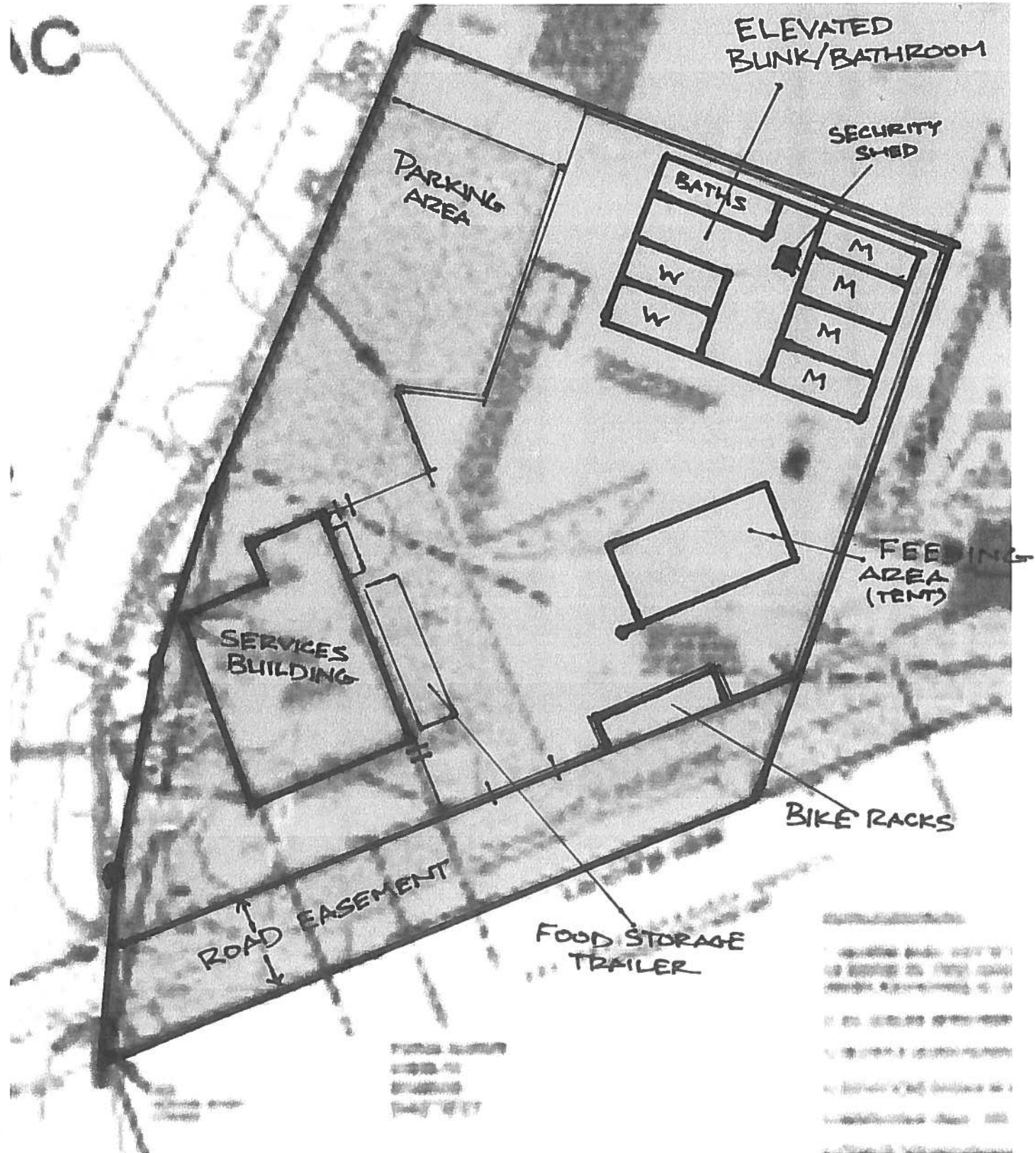


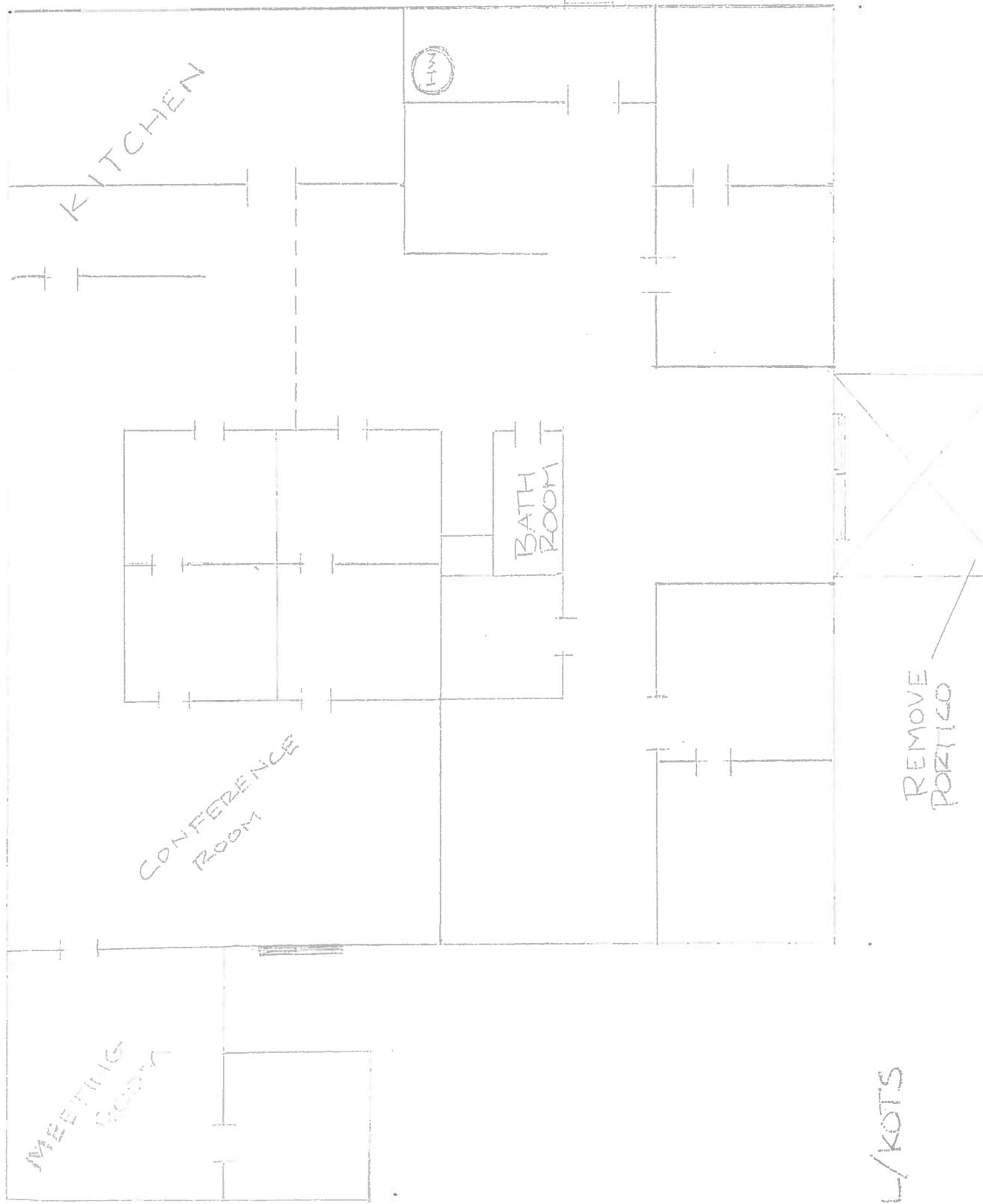
PROPOSED SITE PLAN



CONFIDENTIAL

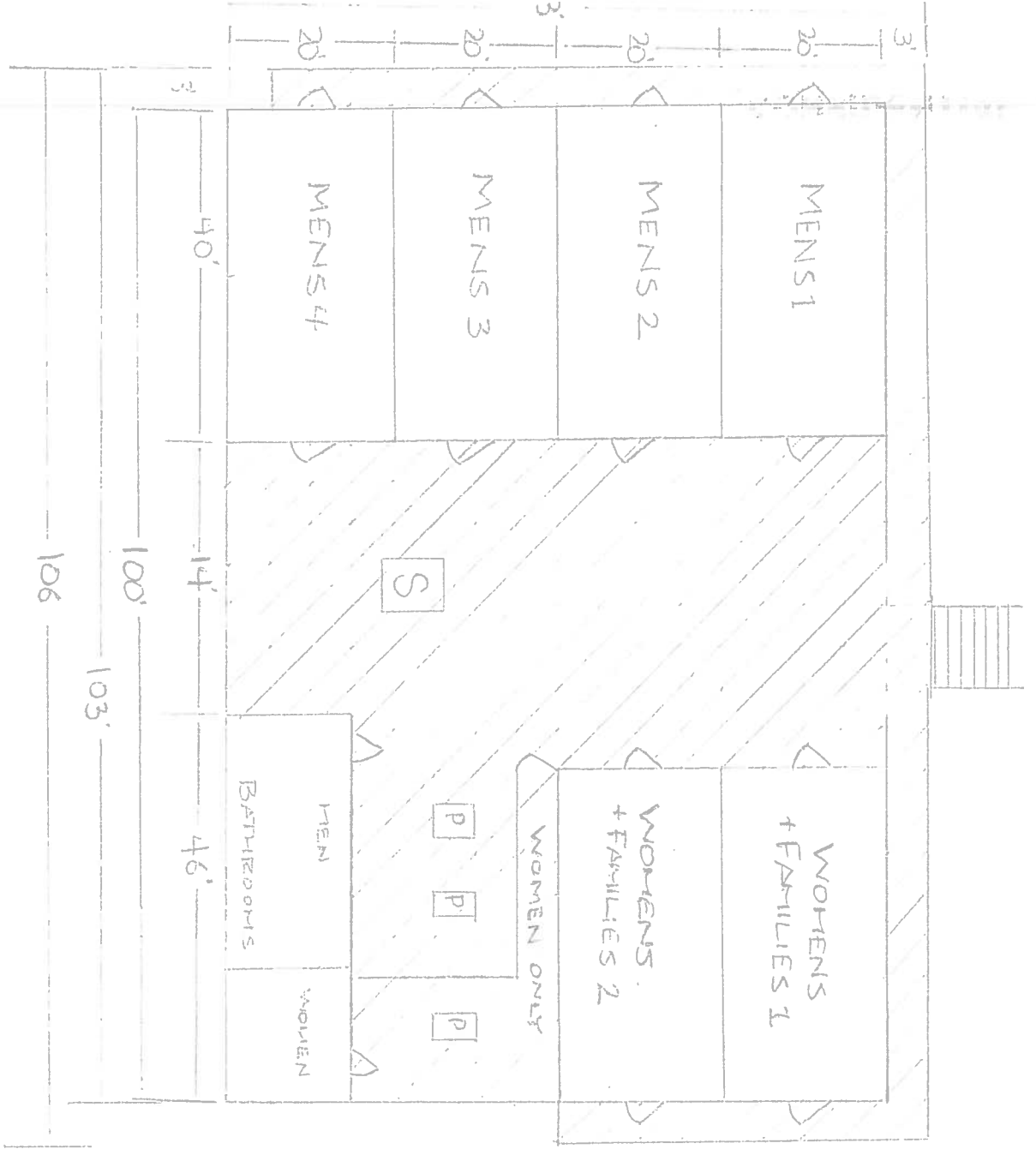
— FENCE

EXISTING BUILDING



CONFIDENTIAL

HAL/KOTS



OVERVIEW/
ELEVATED STRUCTURES

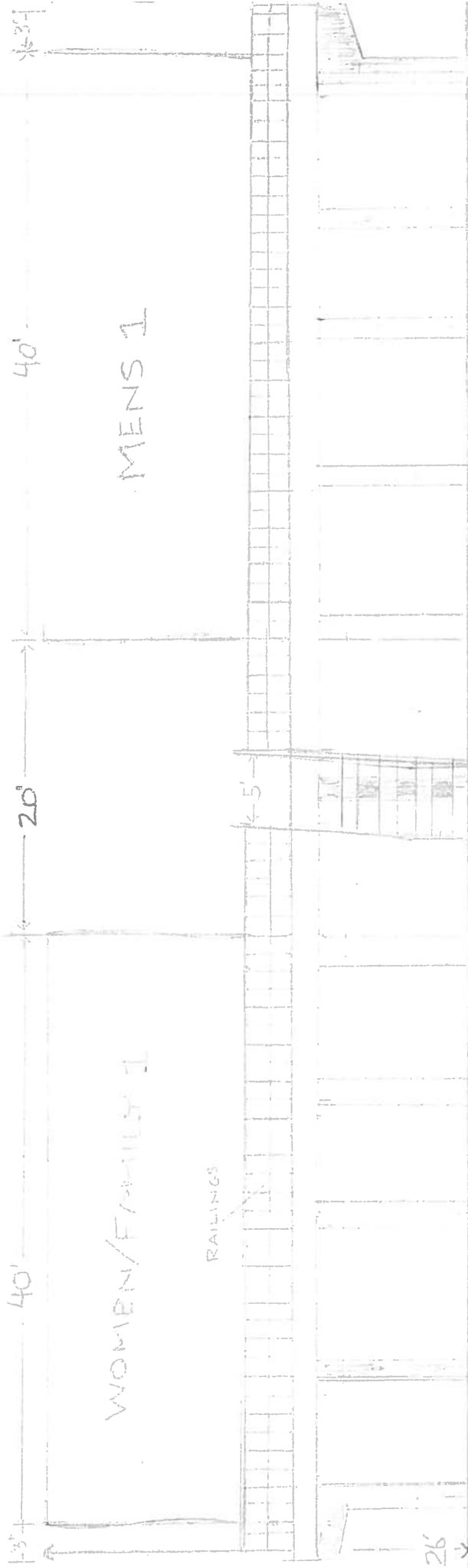
SHALL/KOTS



SCALE
1" = 20'

FRONT ELEVATION
ELEVATED STRUCTURE

CONFIDENTIAL



SCALE
1" = 5'

PHAL/KOTS





AFFILIATED

DESIGN & CONSTRUCTION MANAGERS, LLC

P.O. Box 5882, Key West FL 33045-5882

Office Telephone (305) 296-6021 Dar's Cell (305) 797-1085

E-mail darcastillo@att.net Fax (305) 296-4867

Florida State Building License CGC 1515977

Florida Qualified Contracting Business License #QB45643

Existing Easter Seals Building

5220 College Road

Key West, Florida

We hereby propose to furnish all the materials and labor necessary to complete the following:

Please note that it appears that no repairs have been made to address damage from Hurricane Wilma.

Interior Repairs

- Labor and materials to remove drywall 4' off floor throughout the building and dispose of.
- Labor and materials to apply antimicrobial agent where drywall was removed.
- Labor and materials to install drywall, tape and finish with texture similar to existing.
- Labor and materials to remove all carpet and dispose of.
- Labor and materials to replace pocket doors and trim.
- Labor and materials to prime and paint all walls, ceilings, moldings and interior doors.
- Labor and materials to install vinyl flooring with vinyl base.
- Labor and materials to clean to move in condition.

Total labor and materials \$25,592.00

Exterior Repairs

- Labor and materials to repair stucco 4' high on front elevation with bonding agent, stucco base and marblcrete.
- Labor and materials to remove covered entry and dispose of..
- Labor and materials to replace (3) sections of rotted fascia.
- Labor and materials to paint exterior.

Total labor and materials \$8,973.00

Roofing

- **Labor and materials to tear off existing modified roof to a smooth workable surface and dispose of.**
- **Labor and materials to install 28 pound base sheet, 4" lapped dry in with 1 ¼" roofing nails and tin tabs.**
- **Labor and materials to install custom made 3" x 3" 26 gauge galvalume eave drip and re-flash stacks.**
- **Labor and materials to install (2) ply fiberglass roofing felt set in hot asphalt.**
- **Labor and materials to install (1) ply modified bitumen roofing felt set in hot asphalt.**
- **Labor to clean job site.**
- **Work carries a 5 year warranty against any leaks or defects in workmanship.**

Labor and materials

\$23,650.00

Interior HVAC

- Labor and materials to replace (2) split systems serving office with (2) American Standard 3 ton split systems..
- Labor and materials to install air handlers in closet to sit on aluminum stands.
- Labor and materials to install new secondary condensate pans on floor under the stand.
- Labor and materials to install new condensate switches in pans and air handlers.
- Labor and materials to install a new Honeywell programmable thermostat.
- Labor and materials to anchor new condenser to existing stands on roof.
- Note: 10 year warranty on equipment and (1) year warranty on installation.

Labor, materials and permit fees

\$10,331,00

Interior Electric

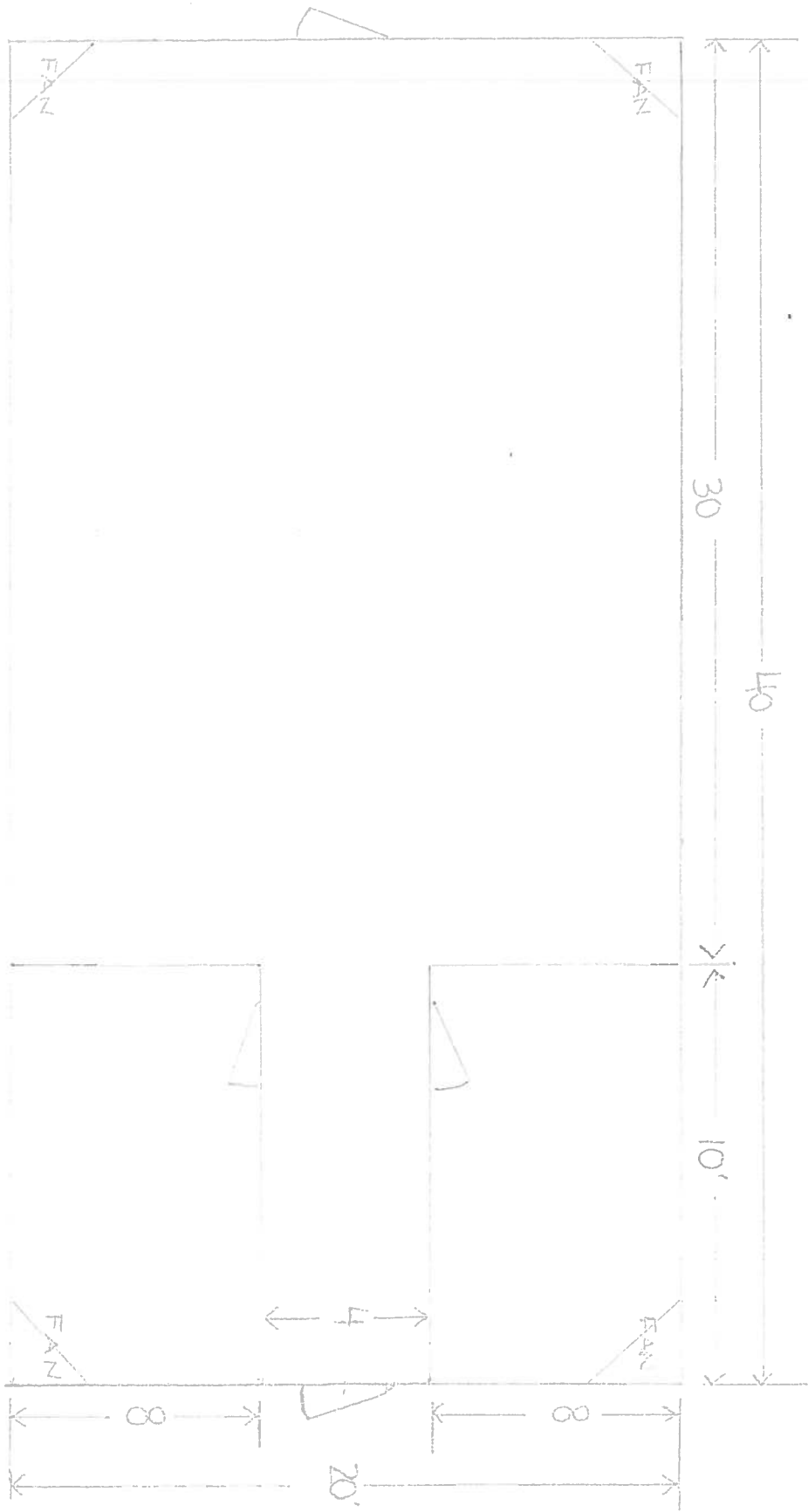
- Labor and materials to run new grounded wire throughout.

Labor and materials

\$30,000.00

Interior Plumbing

- Plumbing labor and materials for existing building will be billed on a time and materials basis. Upon inspection building had no water to check for existing leaks.

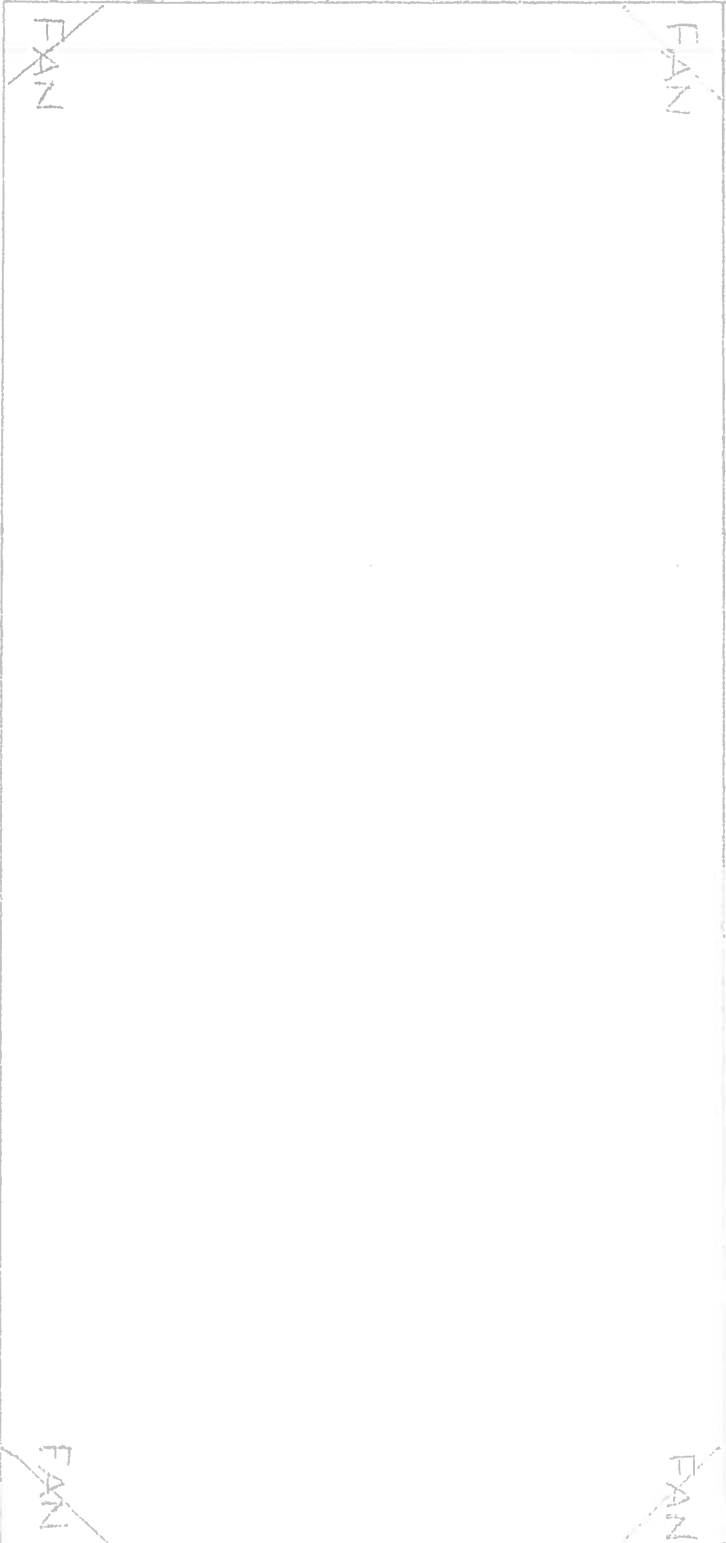


FLOOR PLAN
 WOMEN/FAMILY BUILDING(2)

SHAL/KOTS

CONFIDENTIAL

SCALE
 1" = 5'



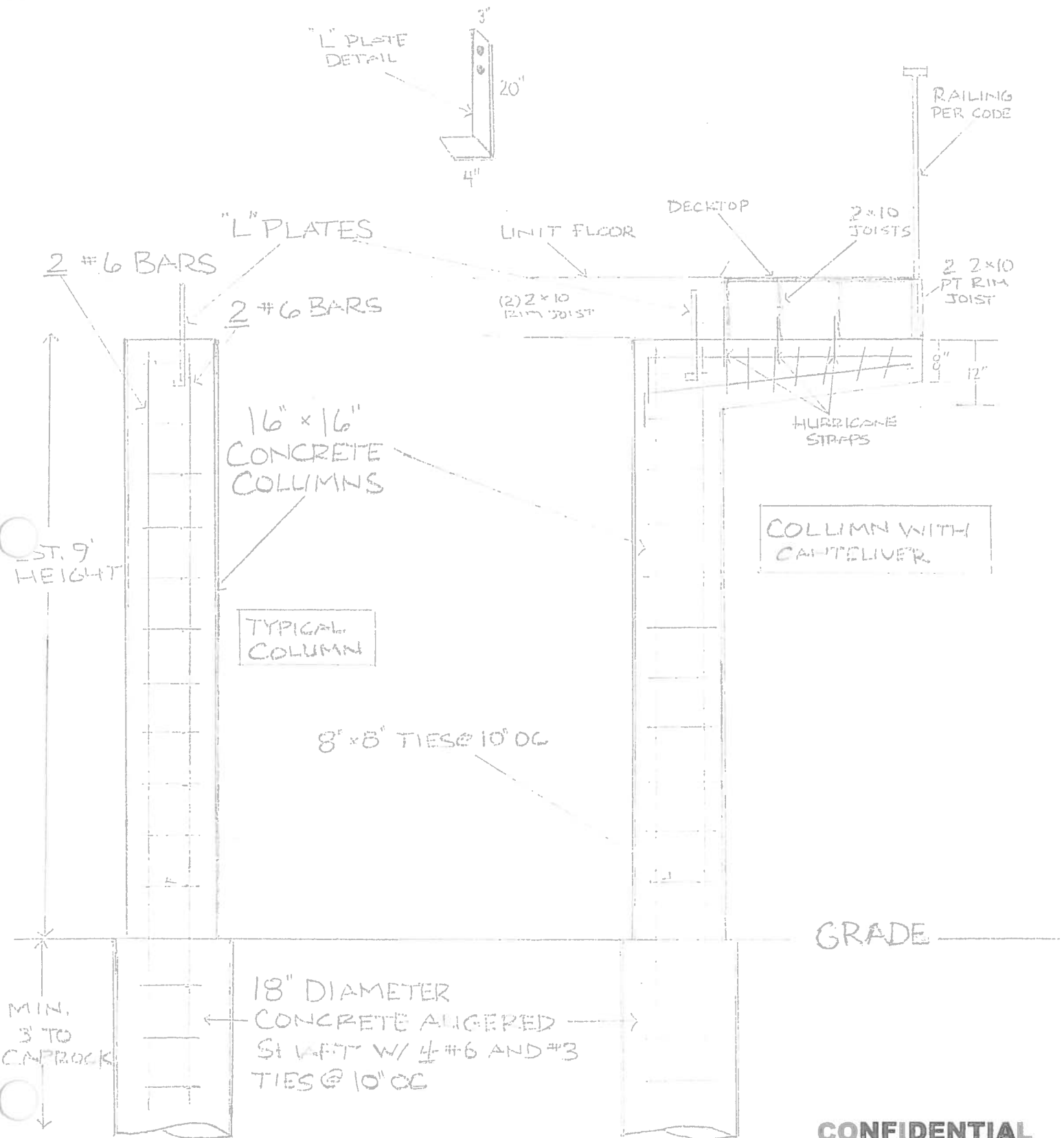
FLOOR PLAN
MENS DORM (4)

SHAL/KOTS

SCALE
1" = 5'

COLUMN DETAIL

SCALE
1" = 2'



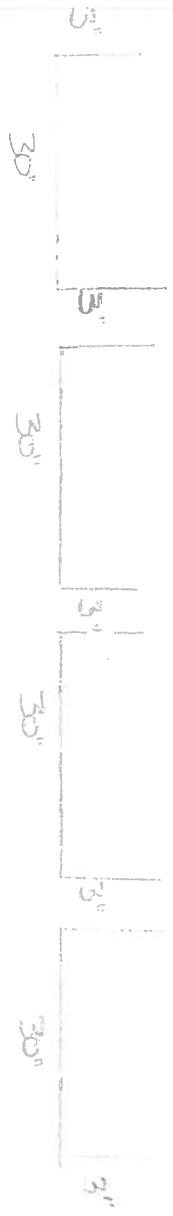
CONFIDENTIAL

ASHER 1

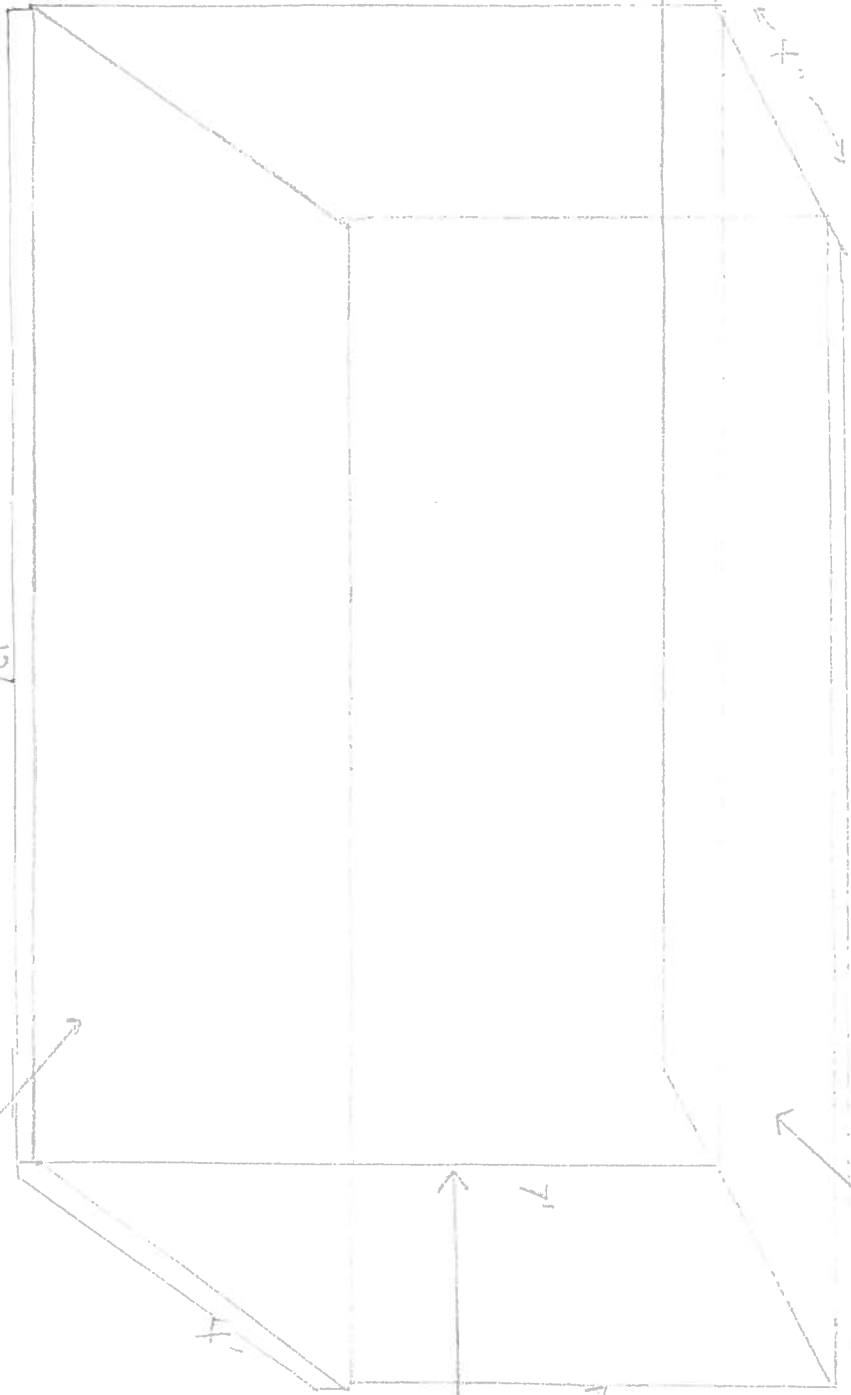
WASHER 2

DRYER 1

DRYER 2



CONCRETE PAD
12' x 4' x 3'



METAL ROOF

6' x 7'

RICHARD CASEY, JR.
PO Box 303
Big Pine Key, Florida 33043
(35) 923-9476
rickcaseyjr@gmail.com

March 08, 2017

TO: PALM HARBOR
FR: SOUTHERNMOST HOMELESS ASSISTANCE LEAGUE, INC.
RE: COST ESTIMATE, MODULAR BATHROOMS

The Southernmost Homeless Assistance League, Inc. is a non-profit organization who will be constructing a homeless shelter to be in Key West, Florida. We seek pricing for a modular building to function as a bathroom facility. Please find a floor plan and preliminary specifications attached. Should you have any questions, please feel free to contact me directly. Please provide current estimate of time from order date to delivery.

FLOORPLAN: Attached
SPECIFICATIONS: Single box, 15' wide x 46' length
Wind load rating to 180 mph (Monroe County)
Two windows (approx. 4' x 18") installed high on each end wall
Two exterior doors
Tile floors, walls, walls and divider walls
Shingle roof (price metal roof alternative)
Exterior clad in corrugated metal (?)
3 drain holes in floor to exterior
Commercial rubber baseboards
Full divider wall creating women's facilities (16'L) and men's facilities (46'L)
Three ceiling fans with lights (2 men's & 1 women's)
Lighting bank above each row of sinks
Exterior lighting at each entry door
Interior light/fan in each women's bathroom

Men's facilities to include:

- 6 shower stalls, each separated by 4' divider wall (1 stall h/c)
- 2''-3'' high edge/lip at entry to each shower stall
- 3 toilet stalls (1 h/c) & 4 urinals
- 6 sinks with countertop (no cabinets) with 4'' shelf across
- Single supply closet/cabinet, all wood.

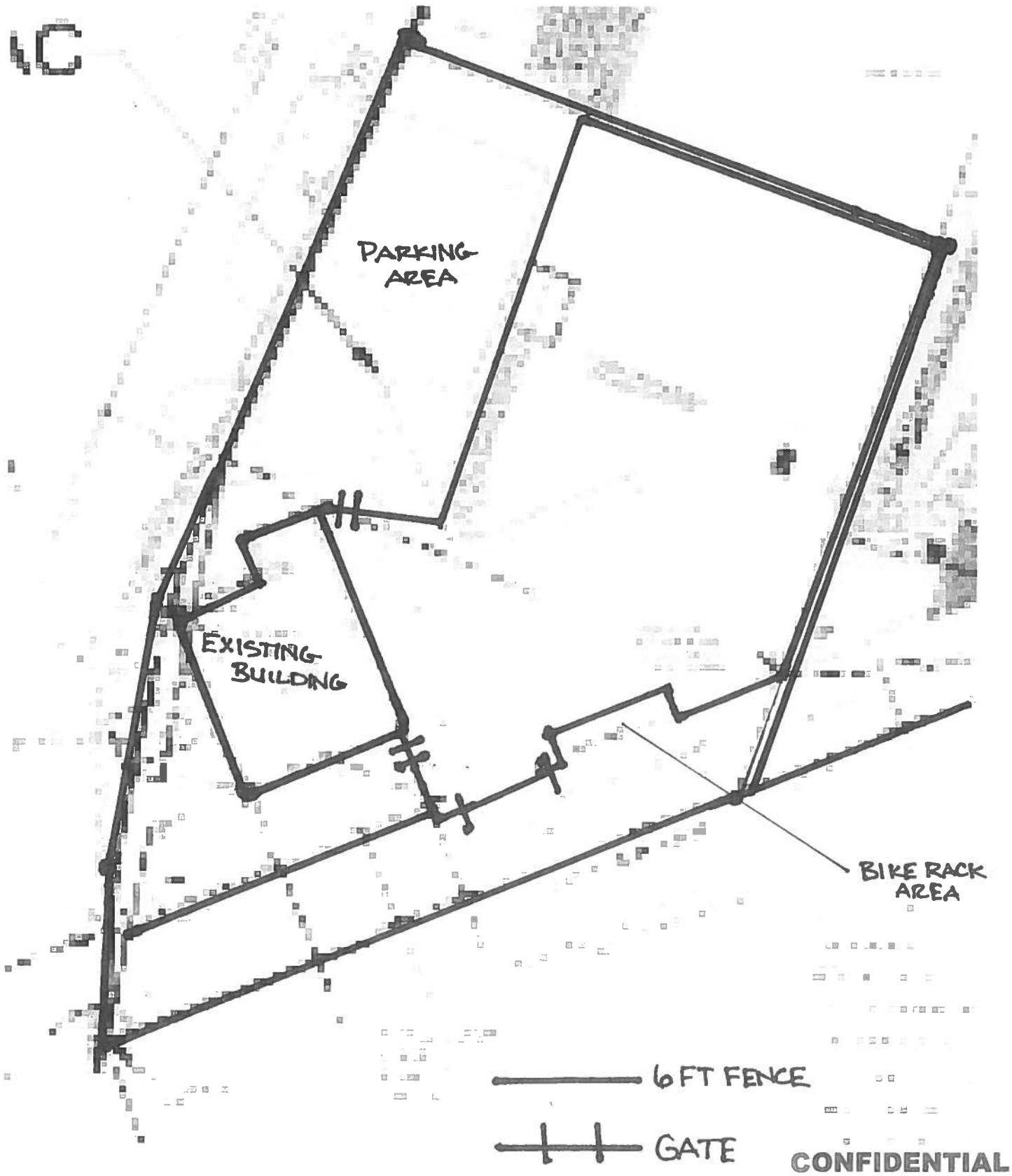
Women's facilities to include:

- 4 bathrooms each containing shower, sink & toilet (1 h/c) *
- 6 sinks along end wall with countertops (no cabinet) with 4'' shelf across

Should you have any questions, please feel free to contact me directly. We contemplate contract directly for the unit, as the organization is exempt from state sales tax. Upon delivery and final payment, we would turn the unit over the general contractor, to be selected by bid solicitation **CONFIDENTIAL**

* Note: Specifications for women's facility may differ from floor plan. Use specifications.

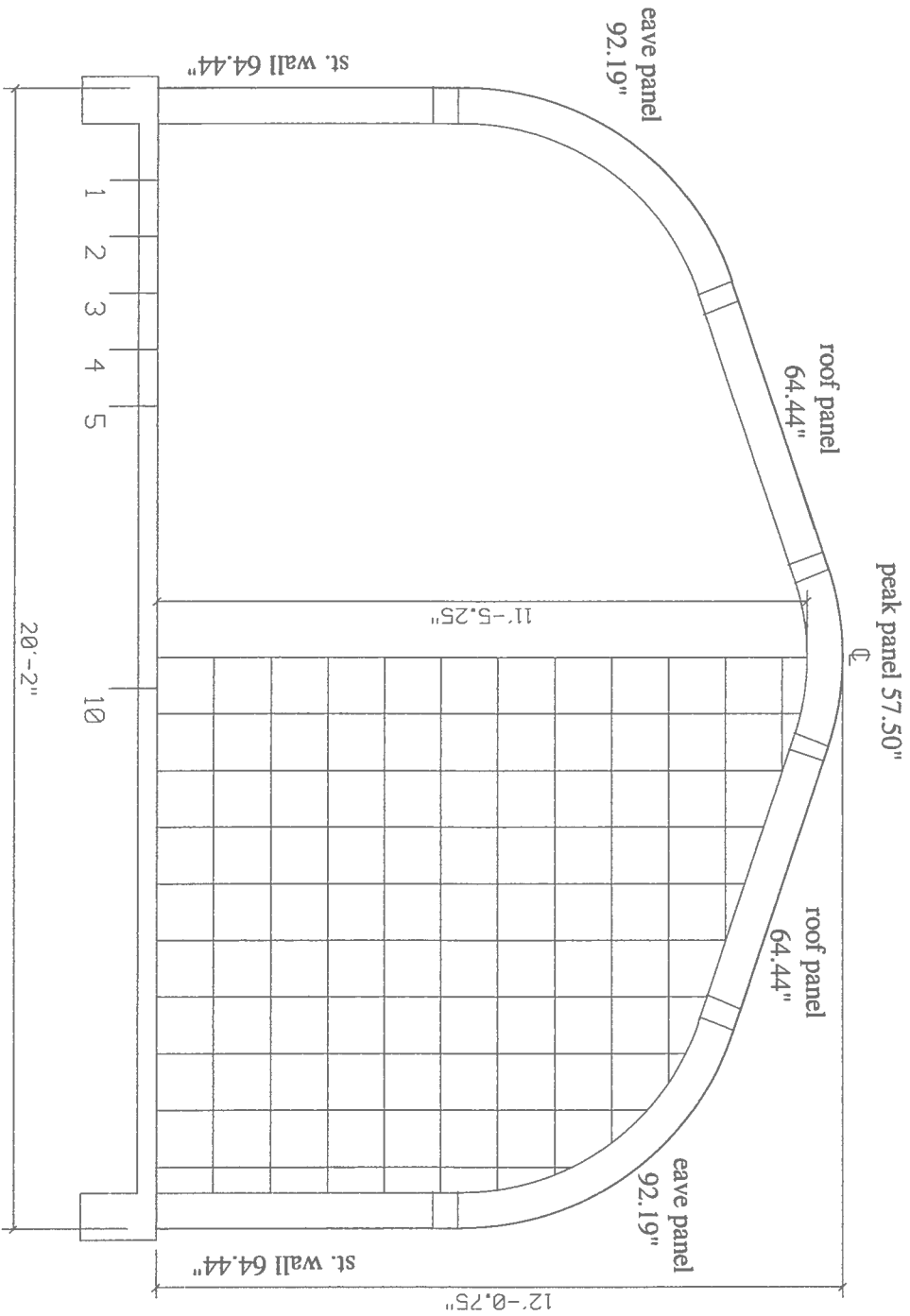
FENCE DETAIL



CONFIDENTIAL

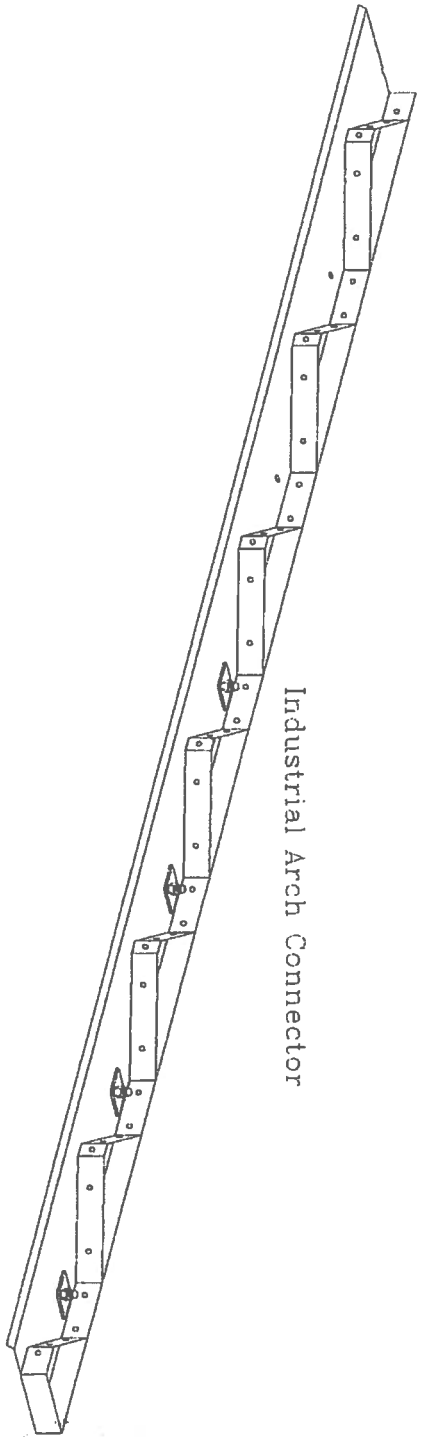
STEELMASTER
BUILDING SYSTEMS

www.SteelMasterUSA.com
800-341-7007

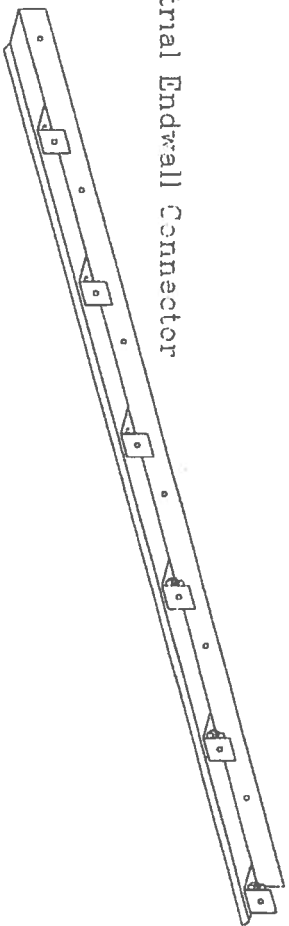


| Horizontal Distance | Inside Clearance |
|---------------------|------------------|
| 1' | 8'-2" |
| 2' | 9'-0.5" |
| 3' | 9'-6.5" |
| 4' | 9'-10.5" |
| 5' | 10'-2.5" |
| 10' | 11'-5" |

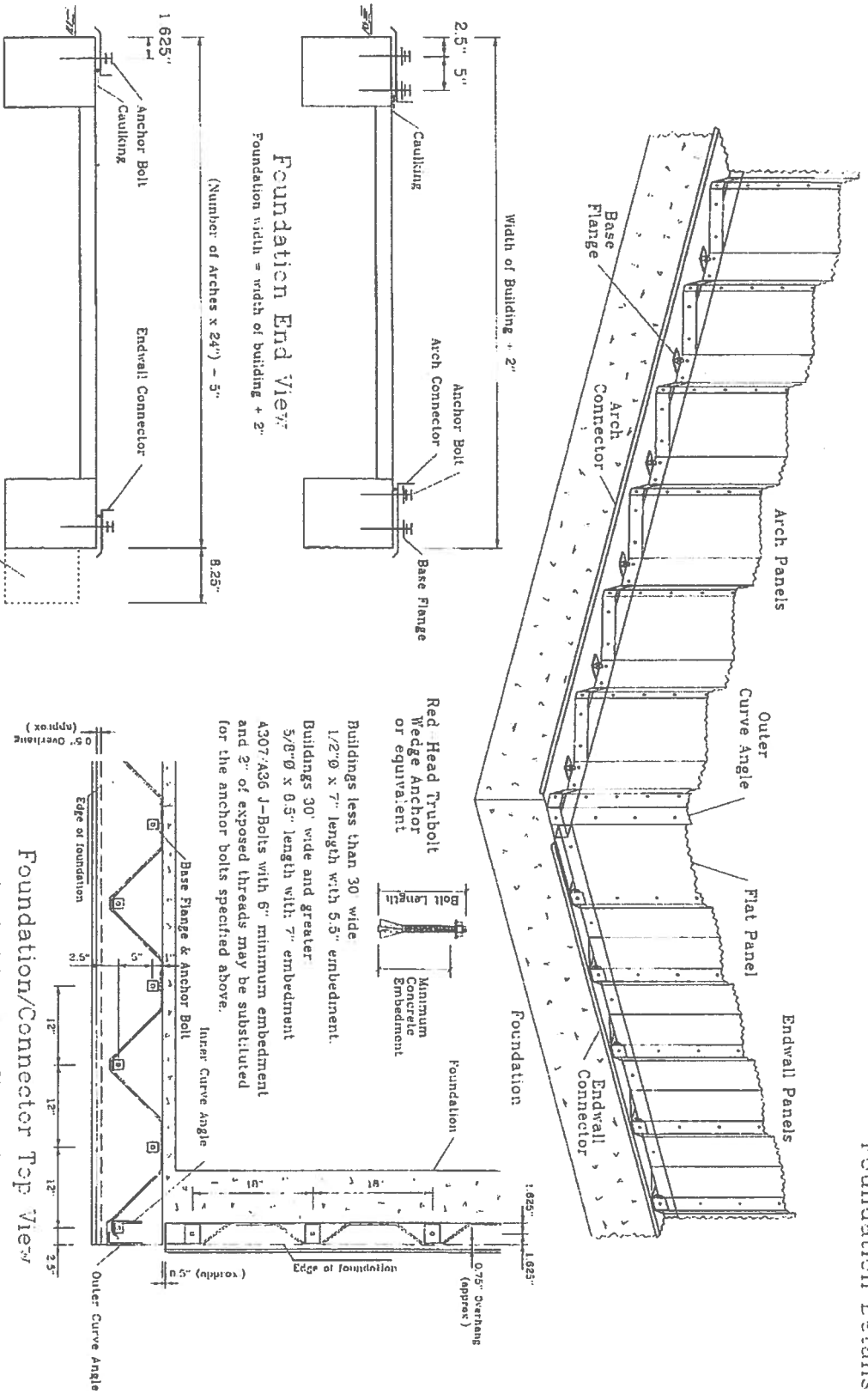
Industrial Connector Instructions



Industrial Arch Connector



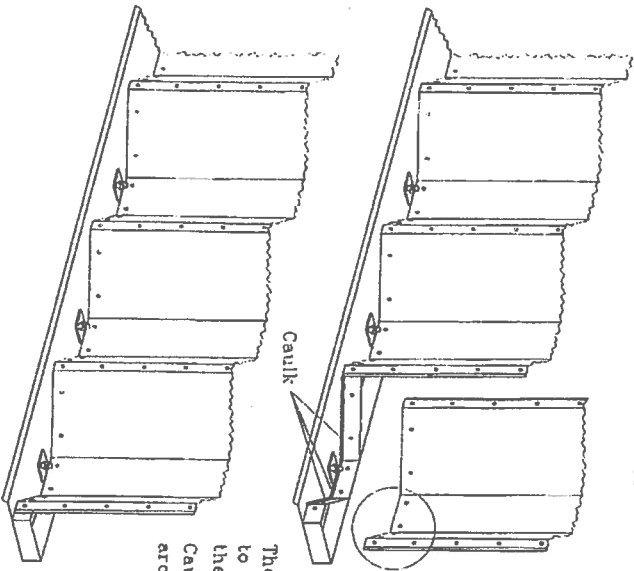
Industrial Endwall Connector



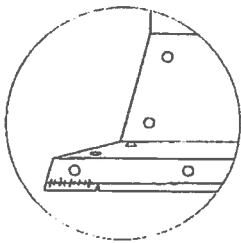
Refer to the blueprint or drawing supplied for specific foundation dimensions and anchor bolt layout.

Installation of the anchor bolts must be done in accordance with the manufacturer's instructions.
 Anchor bolts and caulking are not supplied (available as optional items)

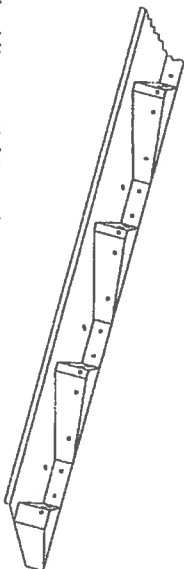
The arch panels fasten to the industrial connector with the standard bolts and nuts supplied with the building.



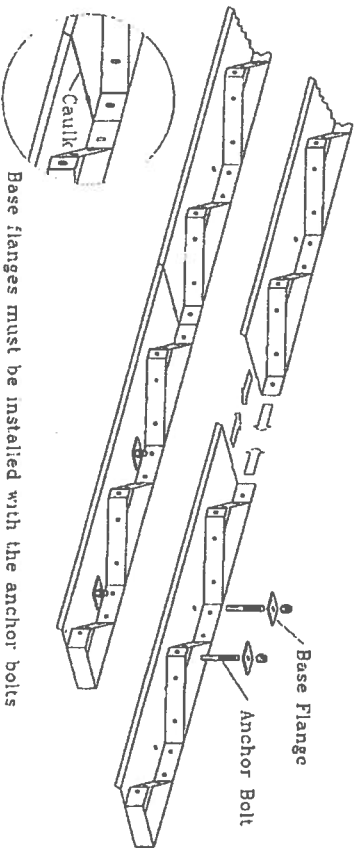
The arch panels at the ends of the building must be modified to fit the "boxed" ends of the connector. Flatten the edge of the arch panel 2.5" - 3" up from the bottom end of the panel. Caulking is recommended between the arch wall panels and the arch connector. Apply the caulking before raising each arch.



The arch connector for the "X" and some "Q" buildings differs from the connector for "A" and "S" buildings as it is angled to match the pitch of the arch wall panels; however, installation is the same for all building types. Base flanges are not required, or supplied for the industrial connector on "X" and "Q" model buildings.



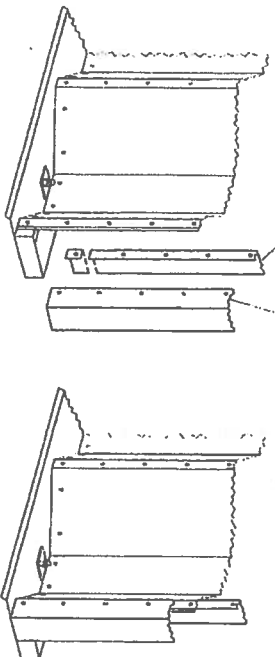
Two pieces of arch connector butt together to form one complete anchor bolt hole. Caulking is recommended where the ends of the connector pieces butt together.



Base flanges must be installed with the anchor bolts on "A" and "S" model buildings.

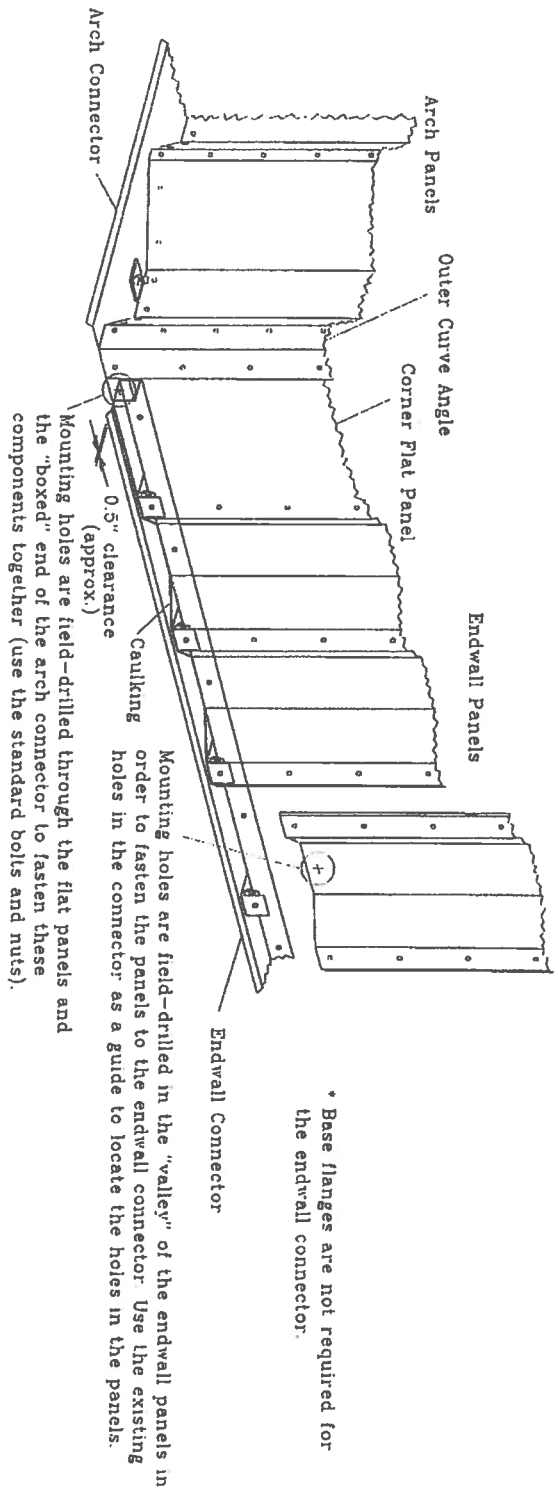
Inner Curve Angle

Outer Curve Angle



Inner curve angles must be shortened approximately 2.5" - 3" to fit over the boxed end of the arch connector. The outer curve angle covers the modified edge of the arch panel.

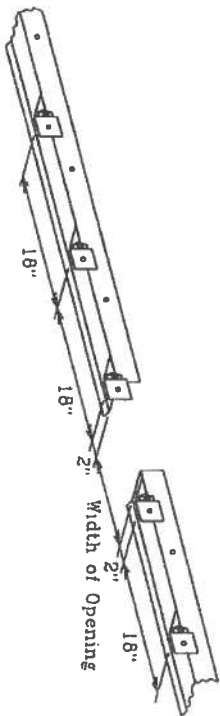
Refer to the blueprint or drawing supplied for the connector and anchor bolt layout.



Multiple pieces of endwall connector butt together at an anchor bolt. Caulking is recommended where the ends of the connector pieces butt together.

For solid endwalls set the base-connector starting at the center of the building, and work out to the walls. For an endwall with an opening, establish the location of the opening and set the base connector from there, out to the walls of the building. There is approximately a half-inch of clearance between the ends of the endwall connector and the inside face of the arch connector.

Caulking is recommended along the joint between the endwall panels the endwall connector. Apply caulking after the endwall panels are bolted into position.



On endwalls with an opening(s) the distance between the connector pieces is equal to the actual opening width. The anchor bolts set 2" to each side of the opening and every 18" C.T.C. thereafter.

The endwall panels fasten to the industrial connector with the standard bolts and nuts supplied with the building. Refer to the blueprint or drawing supplied for the industrial connector and anchor bolt layouts.