



**City of Key West
CCTV and Security Lighting at
Mole Pier
RFP #0006-12**

Florida Key Electric now submits:



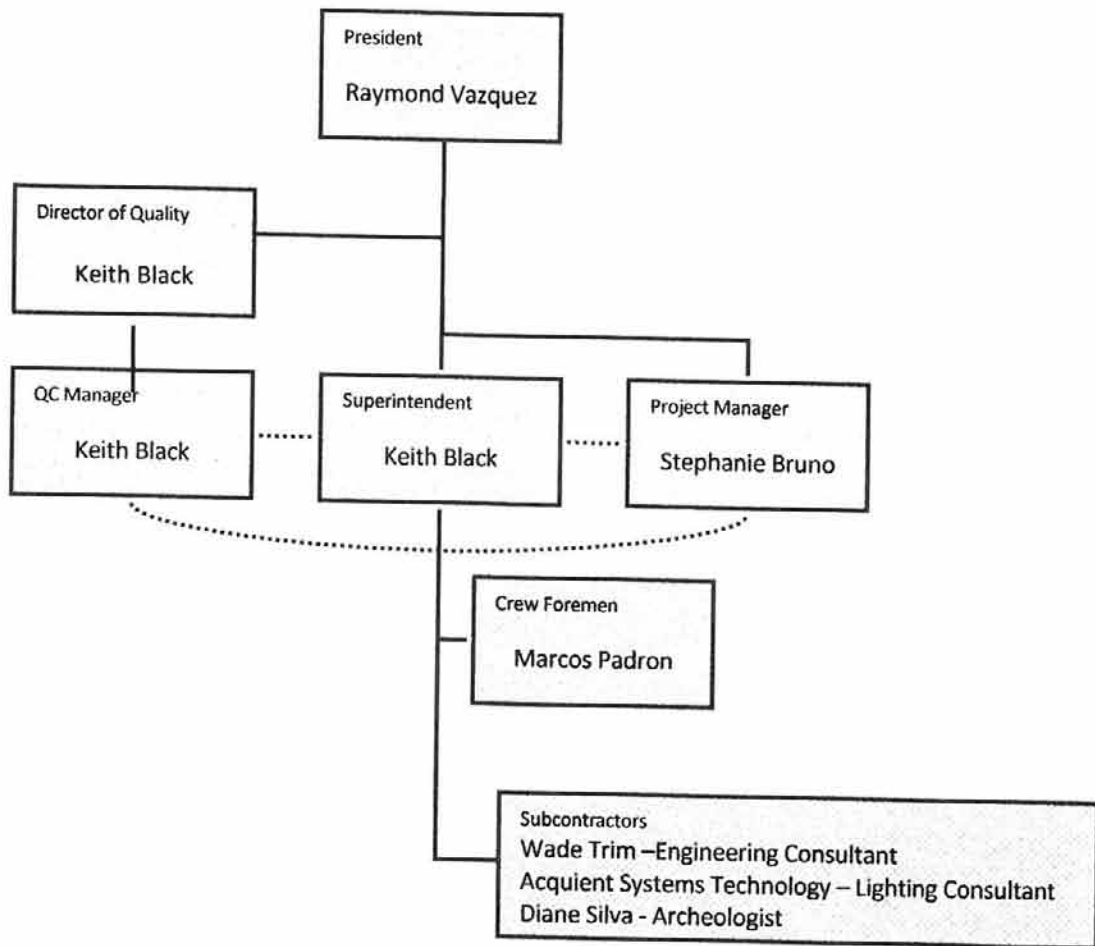
Information Page

**City of Key West
CCTV and Security Lighting at Mole Pier
RFP #006-12**

**Stephanie Balbuena – Project Manager
Cell 305-509-0739
sbruno@flkeyselectric.com**

Florida Keys ELECTRIC INC.

Organizational Chart





Company & Personnel

Resumes

RAYMOND VAZQUEZ

23 Driftwood Dr.
Key West, Florida 33040
(305) 296-4028 Office
(305) 296-9283 Fax
rvazquez@flkeyselectric.com

EXPERIENCE

1988 - Present Florida Keys Electric, Inc. Key West, Florida
President-Owner
Master Electrician
▪ All aspects of electrical for residential, commercial and government projects. Including but not limited to the following:
▪ Staff Supervision
▪ Reading Blueprints

EDUCATION

1982 - 1986 Key West High School Key West, Florida

INTERESTS

Avid watersports fan that enjoys boating and fishing.

PROFESSIONAL AND PERSONAL REFERENCES

Available on request

STEPHANIE BRUNO

3305 Riviera Drive • Key West, FL 33040 • Mobile: 305-509-0739
stephanie.b.balbuena@gmail.com

SUMMARY OF QUALIFICATIONS

CORE COMPETENCIES

Cost Accounting/Job Cost Management
Legal/Dispute Resolution
Insurance Claim Management

Fiscal Budgeting
Contract Negotiations
Employee Training

Risk Management
Strategic Planning
Software Imp./Support

GOV/HUD Certified Payroll
Financial Reporting
Project Management

PROFESSIONAL EXPERIENCE

FLORIDA KEYS ELECTRIC, INC

2011– Present

Project Manager

- Manage commercial contract work with responsibilities including but not limited to Contract/Risk Management, Change Orders Subcontractors, Schedule, RFI's, Permits, Inspections, Field Personnel, Submittals, Dispute Resolution, Budgeting, Job Cost, Compliance Reporting including Davis Bacon as applicable, overall Project Management, etc.

DOOLEYMACK CONSTRUCTORS, INC

2006 – 2011

Vice President

- Managed all financial aspects of the business including A/P, A/R, G/L, Job Cost, Certified Payroll, Insurance Compliance, Bonding, Fiscal Budgeting and Reporting.
- Managed Project Managers and all Personnel across 4 offices daily and facilitated monthly cost reviews ensuring projects were delivered on time and within budget while minimizing risk. Ultimately responsible for project success.
- Negotiated Subcontract Agreements, Client Contracts, HUD Contracts, and Change Orders. Assisted Project Managers in bringing swift resolution to contractual/legal disputes and insurance claims.
- Trained employees on Operational processes and Software programs.

EDUCATION AND TECHNICAL SKILLS

University of Georgia, Business Core Curriculum
Gwinnett University Center, Accounting Studies

QuickBooks Certification, FL Construction Lien Law Courses, Microsoft Word, Microsoft Excel, Microsoft Access, AIA Software
Adobe Writer, Timberline, COINS, COINS – TI, Prolog, SureTrak, MAS 90/200, Submittal Exchange, OSHA 10

PREVIOUS PROJECTS (Sample Only, More Experience Provided Upon Request)

Davis Bacon/Prevailing Wage/Government/Public/HUD Financed:

Geneseo College Doty Hall Renovation (Geneseo, NY): \$25M Renovation, Historic, LEED Silver, Prevailing Wage, SUNY Funded

New York State Police Troop D Headquarters (Oneida, NY): \$4.8M, LEED Silver, Prevailing Wage, NYS Funded

Ausable Forks School Renovation (Plattsburgh, NY): \$12M, 3 Separate Schools, Interior Renovations and Additions, Prevailing Wage, NYS Funded

New Riviera Nursing Home (Coral Gables, FL): \$25M, HUD Financed, Davis Bacon, 4 Story ALF with 3 Story Underground Parking, Tremie, AHCA Inspections

NuVista at Wellington Green ALF (Wellington, FL): \$28M, HUD Financed, Davis Bacon, 120 Bed Skilled Nursing Independent Living Facility, AHCA Inspections, OCIP, Filigree Plank, Daikin System

Privately Financed:

Coral Reef Nursing Home (Miami, FL): \$12M, Addition and Renovation, AHCA Inspections

Marriott Courtyard Hotel (Miami, FL): \$14M, 5 Story Filigree Plank, Winner of ABC's 2010 Excellence in Construction Eagle 2010 Pyramid Award for Commercial \$5M - \$15M

MICHAEL L. SMITH

P.O. Box 154
Key West, Florida 33040
305-797-3985 Cell
305-294-2209 Home

RESUME

JOURNEYMAN ELECTRICIAN WIREMAN WITH THIRTY TWO YEARS OF EXPERIENCE IN RESIDENTIAL, COMMERCIAL AND INDUSTRIAL APPLICATIONS. INCLUDING THE CONSTRUCTION AND MAINTENANCE OF THESE ELECTRICAL SYSTEMS. EXPERTISE AND KNOWLEDGE OF ELECTRICAL CIRCUITRY, CONDUIT SYSTEMS, SWITCH GEAR, MOTOR CONTROL CENTERS, TRANSFORMER INSTALLATION AND TERMINATION, LIGHTING AND POWER BLUEPRINTS/SPECIFICATION INTERPRETATION. EXHIBITS A VAST KNOWLEDGE OF THE NATIONAL ELECTRICAL CODE, NATIONAL FIRE PROTECTION CODES, AMERICAN INSTITUTE ARCHITECTS DOCUMENTATION AND ELECTRICAL ENGINEERS INSTITUTE DOCUMENTATION AND PROCEDURES. FURTHER THE ABILITY TO CALCULATE AND UTILIZE THE ABOVE REFERENCES IN THE APPLICATION OF ELECTRICAL SYSTEMS.

EXPERIENCE

Benson Electric, Inc. – Key West, Florida

Milcon – Key West, Florida

Florida Keys Electric, Inc. – Key West, Florida

Estimator/Foreman

All aspects of electrical for residential, commercial and government projects,

Including but not limited to the following:

- Reading Blueprints
- Crew Supervision
- Completion of daily paperwork : daily reports, timesheets

FOREMAN ON THE FOLLOWING PROJECTS

FKE: Construction of Fitness Center – NAS Truman Annex

FKE: Renovation and Refrigeration Installation – NAS Sigsbee Park Commissary

Milcon: Construction of Air Operations Building and New Control Tower – NAS Boca Chica

Benson Electric, Inc: Construction Oceanside Condominiums – Key West, Florida

DOUG HOLMES

Mobile: 305-797-2856

- Licensed Journeyman Electrician
 - OSHA 30 Certified

Florida Keys Electric, Inc. Superintendent 1992-Present

Proficient in all aspects of electrical construction for residential, commercial and government projects. Including but not limited to the following:

- Performs general functions inherent in all supervisory field positions
- Schedules and directs the sequence of electrical work for crews
- Responsible for the planning and execution of all electrical work for crews
- Evaluates and collaborates the installation of temporary and permanent power
- Ensures performance and productivity of electrical power performed on the project
- Supervise layout, construction and maintenance of electrical systems on electrical projects
- Coordinates subcontractor work activities on the project
- Provides leadership for safety, accident prevention on the project which include: safety orientation of new employees, prepare safety procedures and monitor safety meetings, inspects site for unsafe conditions and practices and implements appropriate corrective action to correct all problems
- Supervises all installations of fire alarm systems, security systems, and telecommunication systems
- Completion of daily paperwork; daily reports, timesheets, etc.
- Design, bending, and installation of EMT, ridged, and PVC coated piping
- Vast knowledge of the National Electrical Code and National Fire Protection Codes

Sample of Past Experience

Santa Maria Resort, Superintendent/Project Manager: \$1.1M, Installation of Service Entrance, metering, conduit distribution system, feeders, and over-current protection; Installation of branch circuitry, boxes, fixtures, devices, and over-current protection for condominiums, and lobby; Installation of Emergency Generator; Installation of distribution system, branch circuitry, and over-current protection for restaurant area

Southernmost Hotel, Superintendent/Project Manager: \$1.6M, Installation of branch circuitry for power, lighting, signage, HVAC equipment , pool equipment; Installation of Elevator branch circuitry, lighting, disconnecting means, and over-current protection; Installation of Telecommunication/Data conduit system, cabling, and devices; Installation of CCTV conduit, cabling, and devices; Installation of emergency generator, with associated conduit, feeders, Automatic Transfer Switch, remote annunciator and controls; Installation of Service Entrance equipment with associated Switch Board, Panel Boards, feeders, conduit, and over-current protection.

Holiday Inn Express, Superintendent/Project Manager: \$1M, Installation of branch circuitry for power, lighting, signage, HVAC equipment , pool equipment; Installation of Elevator branch circuitry, lighting, disconnecting means, and over-current protection; Installation of Telecommunication/Data conduit system, cabling, and devices; Installation of CCTV conduit, cabling, and devices; Installation of emergency generator, with associated conduit, feeders, Automatic Transfer Switch, remote annunciator and controls; Installation of Service Entrance equipment with associated Switch Board, Panel Boards, feeders, conduit, and over-current protection

Boca Chica Tower (Extensive Underground), Superintendent/PM: \$1.1M, Site layout for duct bank, installation of telecommunication and data duct bank, installation of duct bank for power, installation of man holes and hand holes with associated excavation, compaction, dewatering and backfill.

Key West Convalescent Center, Superintendent/Project Manager: \$700K Installation of branch circuitry, devices, covers, over-current protection for Life Safety, Critical Power, and Normal power; Installation of conduit system, cabling, devices, for Fire Alarm System, Nurses Call System, and Security System; Testing for all receptacles, and equipotential grounding; TVSS installations; Generator certifications; Installation of branch circuitry, fixtures, conduit, and over-current protection for lighting; Passage of all ACHA inspections, and Florida State inspections

El Rancho Motel, Superintendent/Project Manager: \$800K, Installation of service entrance equipment with associated panelboards, disconnecting means, conduit systems, feeders for service equipment, termination of service equipment. Installation of emergency stand by generator, automatic transfer switch, and remote annunciator with associated conduits, feeders and control branch circuitry. Layout of project from blueprints and specifications for power, lighting, life safety, fire alarm and telecommunication systems with associated boxes, devices, covers, branch circuitry and over-current protection.

Key West International Airport, Assistant Project Manager: \$4.7M, Assistant Project Manager involving the layout of project, scheduling of personnel, daily reporting, and quality assurance of project installation and safety.

Key West Police Department, Superintendent/Project Manager: \$700K, Installation of service equipment, standby emergency generator with associated conduit, feeders and controls. Installation of conduits and cabling for CCTV system, fire alarm system, telecommunication/data system with associated boxes, devices, and covers. Installation of branch circuitry for lighting and power with associated boxes, devices, covers and over-current protection.

KEITH BLACK

Experience:

December 2005-present

Florida Keys Electric, Inc.

Key West, Fl

Superintendent

- Performs general functions inherent in all supervisory field positions
- Schedules and directs the sequence of electrical work for crews
- Responsible for the planning and execution of all electrical work for crews
- Evaluates and collaborates the installation of temporary and permanent power
- Ensures performance and productivity of electrical power performed on the project
- Supervise layout, construction and maintenance of electrical systems on electrical projects
- Coordinates subcontractor work activities on the project
- Provides leadership for safety, accident prevention on the project which include: safety orientation of new employees, prepare safety procedures and monitor safety meetings, inspects site for unsafe conditions and practices and implements appropriate corrective action to correct all problems
- Supervises all installations of fire alarm systems, security systems, and telecommunication systems
- Completion of daily paperwork; daily reports, timesheets, etc.
- Design, bending, and installation of EMT, ridged, and PVC coated piping
- Vast knowledge of the National Electrical Code and National Fire Protection Codes

Purchasing Manager

- Continually develop expertise to support growth for new projects.
 - Build and develop relationships with key suppliers and customers.
 - Identify and develop training opportunities.
 - Order materials and services as per negotiated and appropriately approved. Review quotations.
 - Prepare purchase requisitions, approve and issues purchase orders in accordance with company policy and negotiated terms and conditions.
 - Maintain procurement files.
 - Track Purchasing activity and measurements.
 - Discuss defective or unacceptable new goods or services with users, vendors and others to determine cause of problem and take corrective and preventative action.
 - Ensure supplier compliance with site and company requirements for safety.
 - Manage vendor relationships and assist in building effective partnerships.
 - Dealing with suppliers.
 - Help to lower the cost and secure agreements.
 - Liaise with Accounts Payable Department to ensure accurate and timely payment of invoices, as necessary for the business with the supplier.
-

Sample of Past Experience

Hurricane Wilma Repairs NAS Key West/Project Manager: \$2.1M, Installation of Service Entrance, metering, conduit distribution system, feeders, and over-current protection; Installation of branch circuitry, boxes, fixtures, devices. Installation of Emergency Generator; Installation of distribution system, branch circuitry, and over-current.

Key West International Airport /Project Manager: \$3.6M, Installation of branch circuitry for power, lighting, signage, HVAC equipment, Installation of Elevator branch circuitry, lighting, disconnecting means, and over-current protection; Installation of Telecommunication/Data conduit system, cabling, and devices; Installation of CCTV conduit, cabling, and devices; Installation of emergency generator, with associated conduit, feeders, Automatic Transfer Switch, remote enunciator and controls; Installation of Service Entrance equipment with associated Switch Board, Panel Boards, feeders, conduit, and over-current protection. Complete fire alarm system

Holiday Inn Express, Superintendent/Project Manager: \$1M, Installation of branch circuitry for power, lighting, signage, HVAC equipment, pool equipment; Installation of Elevator branch circuitry, lighting, disconnecting means, and over-current protection; Installation of Telecommunication/Data conduit system, cabling, and devices; Installation of CCTV conduit, cabling, and devices; Installation of emergency generator, with associated conduit, feeders, Automatic Transfer Switch, remote enunciator and controls; Installation of Service Entrance equipment with associated Switch Board, Panel Boards, feeders, conduit, and over-current protection

Certificates:

- 30 Hour OSHA
 - 10 Hour OSHA
 - OSHA Fall Protection
 - American Health Association CPR/AED
 - Quality Control Training Certification
-



Business History

Established in 1988, Florida Keys Electric Inc. is a premier Electrical Contractor providing electrical, low voltage, and fire alarm services throughout Key West and the Florida Keys. Raymond Vazquez, President and Owner of Florida Keys Electric, Inc., has been licensed and insured for over 22 years specializing in commercial and residential construction projects along with local services for private home and business owners. Florida Keys Electric, Inc. is DBE certified, currently holds an SBA certification and is in the process of obtaining 8A status. As a progressive organization providing all aspects of commercial, residential, industrial and underground electrical contracting, the company has recognized profitable growth by maintaining a reputation of quality and excellence with multiple repeat clients.

List of current, recently completed and past contracts:

<u>Project:</u>	<u>Project Description:</u>	<u>General Contractor:</u>
USCG – Marathon Rehab	Renovation	Nelco Construction
Five Guys Burger	Restaurant	Winesett-Hill Construction
Island City Flying Service	Private Airport	D.L. Porter Construction
Boy Scout Camp Sawyer	Commercial	Charley Toppino & Sons
KW Botanical Gardens	Commercial	Marion Construction
FKCC	Florida College Dorms	Sikon Construction
Poinciana Royale	Aides Housing Project	Coastal Construction
Horace O Bryant	Middle School	Coastal Construction
The Galleon Resort	Hotel Resort	D.L. Porter Construction
El Rancho Motel	Hotel (Commercial)	D.L. Porter
Holiday Inn Express	Hotel (Commercial)	Mike Marino Construction
KW Convalescent Center	Resident Homes	D.L. Porter
KWIA Noise Insulation	Residential Homes	H.I.P.P. Industries

<u>Project:</u>	<u>Project Description:</u>	<u>General Contractor:</u>
KW International Airport	Airport Commercial	Morganti Group
Marathon Airport	Airport Commercial	Morganti Group
Tortuga West	Residential	Salinero Enterprises
Little Palm Island	Resort	Frank Dovelle Const
618 Caroline St.	Residential	Gary the Carpenter
810 & 812 Terry Ln.	Residential	Gary the Carpenter
Casa Alante	Resort Homes	Gary the Carpenter
Naval Base Veteran's	Hospital	Gary the Carpenter
Marquesa Court Homes	Residential	Homes of Distinction
Southernmost on the Bch	Resort	D L Porter Construction
Lower Keys Medical Truman Hotel	Hospital Hotel	M.J. Harris, Inc. D L Porter Construction
Truman Annex	Fitness Center	BRPH
Road Modification	Road Modification	DTC Engineers
Sheriff's Office	Crime Lab	Sea Tech, Inc
Base Ops Facilities	Operation Facilities	Sauer, Inc
Hurricane Wilma Repairs	Government Buildings	Sauer, Inc
Marine Ops Facilities Temporary Building	Operation Facilities	Sauer, Inc

<u>Project:</u>	<u>Project Description:</u>	<u>General Contractor:</u>
Naval Base Pistol Range	Pistol Range	Sauer, Inc
Sigsbee Naval Base Gas Station	Fuel Station	Sauer, Inc
Boca Chica Gymnasium	Gymnasium	Sauer, Inc
Sigsbee Naval Base	Lounge	NAS Sigsbee Sunset Lounge
Ocean Key House Phase 1, 2 & 3	Rooms/Spa	Frank Dovelle Construction
Santa Maria	Condominiums	DL Porter Constructors
Key West International	Hanger Development	DL Porter Constructors
Old Mariners Hospital	Hospital	DL Porter Constructors
Fishermen's Hospital	Hospital	DL Porter Constructors
Walgreen's	Drug Store (Duval)	Suncom Inc.
Hyatt Beach Front Resorts	Condominiums (Time Shares)	Welbro Constructors
Monroe County Courthouse	Government Building	DL Porter Constructors
National Weather Service	NOAA Weather Station	Rovel Construction
Price Building	Office Complex	TPS, Inc.
Miami Subs	Restaurant	EG Braswell Construction

<u>Project:</u>	<u>Project Description:</u>	<u>General Contractor:</u>
Morrison Sales & Service	Car Dealership	DL Porter Constructors
Fisherman's Port	Restaurant	Salinero Enterprises
Champs Sports	Retail Store	Montgomery Development
Lester Building	Government Building	DL Porter Constructors
Silver Eagle	Distribution Facility	DL Porter Constructors
Natural Food Mkt.	Health Care Store	KAWA Construction
Pier House	Hotel	Island Angles
Shell Stations	Gas Station	EG Braswell Construction
Spottswood Companies	Office Complex	KAWA Construction
Key West Brewery & Bottling Plant	Brewery	Redco Construction
Stock Island Shops	Shops/Bank/Radio Station	Keystar, Inc.
Boater's World /Ritz Camera	Retail Store	TRB Construction, Inc.
Ross Dress for Less	Retail Store	Jayeff Construction Corp.
Roy's Trailer Park	Trailer Park	Roy Stone
Marine Bank	Financial Institution	Kawa Construction, Inc.
Key Cove Phase I	Housing Development	DL Porter Constructors
Key Cove Phase II	Housing Development	HTM, Inc

Project:**Project Description:****General Contractor:**

Truman Annex	NAS Secured Warehouse	Harry Pepper&Associates
Pier House Phase 6&7	Hotel	HTM, Inc
Winn Dixie	Retail Liquor Store	Toppino Construction Co.
KW Public Safety	Police Station	D L Porter Constructors
KW Ferry Terminal	Ferry Station	D L Porter Constructors
Sheriff's Hanger	Sheriff's Substation	D L Porter Constructors
Old Mariners Hospital	Sheriff's Substation	D L Porter Constructors
Hard Rock Café	Restaurant	Salinero Enterprises
Sunset Marina	Marina	Bellingham Marine
Key Lodge Motel	Motel	Mike J Marino, Inc.
Perry's Seafood	Restaurant	KAWA Construction
Denny's	Restaurant	Michael J. Marino, Inc.
Noble House	Condominiums	Ocean Key House

Contacts:

Steve Hall	Nelco Construction	813-237-2785
Brian French	Sikon Construction	954-354-8338
Marshall White	D L Porter Constructors	941-929-9400
Lee Bazile	Bellingham Marine	904-358-3362
Gary Loer	D L Porter Constructors	941-929-9400

Karl Walters	KAWA Construction	305-294-8146
Steve Zeamer	Rovel Construction	305-509-1523
Michael Ingram	MB Ingram Architect	305-292-7722
Fred Salinero	Salinero Enterprises	305-294-7618
John Fugo	Montgomery Development	919-969-7301
Marc Fernandez	Harry Pepper & Associates	904-721-3300
Larry Bliel	Keystar, Inc.	305-304-3623
Maradith Jones	TRB Construction, Inc.	561-340-3454
Ken Schloesser	Jayeff Construction Corp.	732-223-5320
Frank Dovelle	Frank Dovelle Construction	305-395-0049
Gary Burchfield	Gary the Carpenter	305-292-0261
Pat Cartwright	Sauer, Inc	904-334-4461
David Moran	Sea Tech, Inc.	305-872-0888
Tony Tarnowski	DTC Engineers & Constructors	203-239-4200
Mike J Marino	Mike J Marino, Inc.	239-910-2132
Kurt Lewin	First State Bank	305-296-8535
Jack Spottswood	Spottswood Company	305-294-9956
Erica Hughes	Spottswood Company	305-294-9556
Terri Spottswood	Truman Company	305-587-3407
Mark Todaro	Centennial Bank	305-292-3852

Craig Cowan	ESI	305-702-6001
Ivan Gonzalez	Graybar	305-520-4800
Jim Groff	Rexel	305-296-6581
Gary Loer	D.L. Porter	941-929-9400
Tracey Bruce	Morganti Group	772-233-2101
Jim Peace	Morganti Group	561-689-0200
Peter Horton	Key West Airport	305-304-0063



Subcontractors



Name:

Alan Schwab

Role:

Electrical Engineer

Education:

Bachelor of Science Electrical Engineering, Lawrence Technological University
Associate of Science Chemical Technology, Lawrence Technological University

Licenses:

Professional Engineer: Florida, Michigan, Nebraska

General Engineering Bio

Alan Schwab is an electrical engineer who provides project management and electrical engineering design services primarily for water/wastewater treatment plants, street lighting, parks, and marinas. Alan brings 19 years of experience with extensive design and field engineering experience. He has spent many years in the field, inspecting, testing, evaluating, troubleshooting, and starting-up electrical equipment and control systems. Alan performs all associated electrical load and voltage drop calculations, as well as sizing wiring, conduit, and over-current protection devices. Alan is also a proficient report writer which enables him to document valuable information in the field while conducting tests and inspections which is ultimately used to prepare reports on all findings and test results.

Representative project experience includes:

Castaway Cove Beach Park, Bayfront Community Redevelopment Agency (BCRA), City of Palm Bay, FL, Electrical Engineer. This improvement project included designing LED lighting throughout the park's parking lot area and along the walking paths. LED lighting was installed in the new recreational pavilion as well as for illuminating the park's entrance sign. Prior to the park's lighting installation, residents did not utilize the park at night, citing safety concerns. With the new lighting installed, the park is now enjoyed at night as well as during the day. Alan performed a photometric lighting calculations and prepared contract bid documents including: Schematic design for the new electrical power system, power panel schedules for the electrical power distribution system, equipment installation details, and specified the electrical power distribution equipment, lighting, related electrical devices, and conduit and wiring.

Jordan School Improvements, City of St. Petersburg, FL, Electrical Engineer. This LEED certified silver project included designing lighting for the school's parking lot and site grounds. Illumination was designed to meet LEED standards, yet also provide night time safety and security. Alan performed photometric lighting calculations and prepared

contract bid documents including: Schematic design for the new electrical power system, power panel schedules for the electrical power distribution system, equipment installation details, and specified the electrical power distribution equipment, lighting, related electrical devices, conduit, and wiring.

US-1 Beautification, FDOT District 5, City of Palm Bay, Brevard County, FL, Electrical Engineer. This project included the design for 3.2 miles of roadway lighting located along the side of the road. Additional decorative pedestrian lighting was added along a separate sidewalk near the beach. A cursory review was performed between different types of light fixtures, including LED technology to determine if long-term energy efficiency and cost savings could be achieved. A photometric analysis was performed for lighting of the roadway and adjacent sidewalk. After selection of the light fixture and pole to be used, plan drawings were created showing the location of all light poles, handholes, directional bores, conduit and wire sizes, circuit identification, and lighting control cabinets. This project included many different engineering challenges to overcome such as steep embankment drop-offs near the edge of the roadway and limited available public right-of-way in some locations. Detailed drawings for light pole concrete bases, handholes, conduit trenches, utility electrical services, and lighting control cabinet fabrication were also created. Written electrical specifications and installation notes were included on the drawings.

R.J. Conlan Boulevard Beautification, City of Palm Bay, Brevard County, FL, Electrical Engineer. This project included the design for 2.5 miles of decorative roadway lighting located in the median. A cursory review was performed between different types of light fixtures, including LED technology to determine if long-term energy efficiency and cost savings could be achieved. A photometric analysis was performed for lighting of the roadway and adjacent sidewalk. After selection of the light fixture and pole to be used, plan drawings were created showing the location of all light poles, handholes, directional bores, conduit and wire sizes, circuit identification, and lighting control cabinets. Particular attention was paid to coordination with landscaping that was to be installed at the same time. Detailed drawings for light pole concrete bases, handholes, conduit trenches, utility electrical services, and lighting control cabinet fabrication were also created. Written electrical specifications and installation notes were included on the drawings.

Bayfront Promenade, City of Clearwater, FL, Electrical Engineer. This project consisted of constructing a new concrete promenade on a set of existing pile structures that remained from a bridge that had been previously demolished. The new promenade featured decorative lighting, convenience power receptacles, and park benches. The existing electric utility power transformer that powered the previous bridge was reused for powering the electrical equipment associated with new promenade. Power from the transformer was connected to a new power pedestal that contained the electrical metering equipment, power panels, and control circuitry for the decorative lighting. Alan prepared contract bid documents including: Schematic design for the new electrical power system, power panel schedules for the electrical power distribution system, equipment installation details, and specified the electrical power distribution equipment, related electrical devices, conduit, and wiring.

17th Street West, Bradenton, FL, Electrical Engineer. Alan was the Electrical Engineer for the 17th St. Decorative roadway lighting in Manatee County. This project includes design for 1 mile of decorative roadway lighting. The design included conduit sizing, cable selection, and review of roadway photo-metrics, service, specifications and general electrical requirements. During the construction phase, Wade Trim was responsible for the preparation of design electrical documents, preparation and support with distribution of construction documents including specifications and drawings, and review of the submitted questions from prospective contractors.

17th Street East Final Design, Manatee County, FL, Electrical Engineer. As an Electrical Engineer, Alan performed the electrical design for phase two of the 17th Street Roadway lighting along 17th street in Manatee County. This project includes design for 1 mile of highway lighting on both sides. The design included conduit size, cable selection, and review of photo-metrics, service, specs and general electrical requirements. Wade Trim was also responsible for the construction management of the entire electrical system. Under the construction phase, Wade Trim was responsible for shop drawing review, responding to RFI's, preparation of bulletins and recommendations for changes.

North Key Largo Wastewater Treatment Plant Advanced Treatment and Wastewater Reuse, North Key Largo Utility Corporation, North Key Largo, FL, Electrical Engineer. This project consisted of an upgrade and expansion of a 0.55 MGD wastewater treatment facility for the Ocean Reef community to meet Advanced Wastewater Treatment (AWT) effluent limits and to implement effluent reuse. Included in this project was the design of site lighting for the new process tanks and surrounding area. Alan prepared contract bid documents including: Schematic design for the new electrical power system, power panel schedules for the electrical power distribution system, equipment installation details, and specified the electrical power distribution equipment, related electrical devices, conduit, and wiring.

Duck Key Wastewater Treatment Plant Advanced Treatment and Wastewater Reuse, Florida Keys Aqueduct Authority, Marathon, FL, Electrical Engineer. This project involved the study and design for the upgrade and expansion of a 0.225 MGD wastewater treatment facility for the Authority to meet Advanced Wastewater Treatment (AWT) effluent limits and to implement effluent reuse. Included in this project was the design of site lighting for the new process tanks and parking area underneath the elevated control building. Alan prepared contract bid documents including: Schematic design for the new electrical power system, power panel schedules for the electrical power distribution system, equipment installation details, and specified the electrical power distribution equipment, related electrical devices, conduit, and wiring.

Security System Upgrade, City of Detroit, MI, Detroit Water and Sewerage Department (DWSD), Electrical Engineer. Alan acted as the QA/QC electrical engineer for this design/build installation of security systems. Wade Trim was responsible for the electrical engineering of the access control systems and the intrusion detection systems for three (3) wastewater pump stations (Bluehill, Fairview, and Oakwood) for the City of Detroit. The electrical design included an electrical survey of the existing security installations at the three sites. Based on the review, recommendations were made to the Owner to replace various security devices and to also replace entrance gates and hardware, sections of fencing as well as doors and hardware. The security installation

included magnetic door switches, window limit switches, and motion detectors for intrusion detection. Card readers in conjunction with automatic gate operators and closed circuit television cameras (CCTV) were installed for access control. The various inputs from the access control and intrusion detection devices were then hard wired to the Owner's security network for remote monitoring and data logging.

Eight Mile Road Pump Station Improvements, Oakland County, MI, Electrical Engineer. This project included designing site lighting for the septage truck access driveway, card reader access system, motorized security gates, and CCTV cameras. Alan prepared contract bid documents including: Schematic design for the modifications to electrical power system, power panel schedules for the electrical power distribution system, equipment installation details, lighting, and specified the electrical power distribution equipment, related electrical devices, conduit, and wiring.

Key West Botanical Gardens, Key West, FL, Electrical Engineer. This project consisted of designing new electrical improvements to the existing chapel and event stage, as well as a new restroom building and a new covered patio. The main electrical service was upgraded and required the installation of a new power panel in the chapel. New electrical panels were also installed at the restroom building, event stage and covered patio. The addition of lighting and receptacles at the covered patio and new receptacles at the event stage completed the project. Alan prepared contract bid documents including: Schematic design for the new electrical power system, power panel schedules for the electrical power distribution system, equipment installation details, and specified the electrical power distribution equipment, related electrical devices, conduit, and wiring.

Michael Smith

From: sean finegan [sean.finegan@sshsmail.com]
Sent: Thursday, June 07, 2012 9:48 AM
To: msmith@flkeyselectric.com; tmckay@dart.org
Subject: References for Key West

Mike

Listed below are some Key reference account for us

Dallas Love Field

City of Dallas

4 year ongoing Installation and Maintenance contract for all Security Systems @ the Airport

Contact ; john.kohut@dallascityhall.com

- Team approach for security technology for Dallas Love Field – providing maintenance and support services for security technology
\$ 6.0 million

Atmos Energy

Master Services agreement for Security in 14 states

Contact; larry.kuper@atmosenergy.com

Texas Department of Transportation

Ongoing security installation and service in texas

Contact: Terry Reidy <Terry.Reidy@txdot.gov> (Terry.Reidy@txdot.gov)

Dallas Area Rapid Transportation (DART)

Security ,installations ,Staffing and service

Contact: tmckay@dart.org

Energy Future Holdings

(TXU ,Luminent & Oncor)

Security Installation ,Service ,Staffing & investigations across Texas

- Customized approach for security outsourcing at TXU - the largest security contract in the southwestern US 48+ million contract

Sean Finegan

Vice President Products & Services

Technology Division

Safe Guard

4801 Spring Valley Road

Suite 125

Dallas ,Texas 75244

214-922-9040 Main

214-393-6997 Facsimile
214-499-7719 Cell