

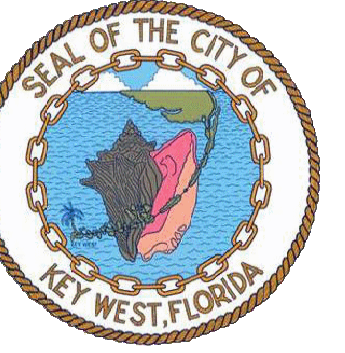


BERMELLO AJAMIL & PARTNERS • INC

Architecture • Engineering • Planning
Interior Design • Landscape Architecture
2601 South Bayshore Drive
Suite 1000
Miami, Florida 33133
(305) 859-2050
Fax (305) 860-3700

PREPARED FOR/OWNER:

CITY OF KEY WEST, FL
P. O. BOX 1409
3140 FLAGLER AVENUE
KEY WEST, FL 33041



PROJECT NAME:

**TRUMAN
WATERFRONT
PARK**

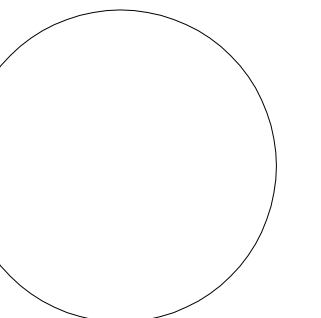
PROJECT LOCATION/ADDRESS:

TRUMAN WATERFRONT PARK WEST
OF FORT STREET AND THE TRUMAN
ANNEX DEVELOPMENT, NORTH OF
KEY WEST NAVAL BASE

SUB-CONSULTANT INFORMATION:

mbi | k2m
ARCHITECTURE, INC.
1001 Whitehead St., Suite 101
Key West, Florida 33040
Tel: 305-292-7722
Fax: 305-292-2162
Email: info@mbi-k2m.com
URL: www.mbi-k2m.com
PROF. REG. AA26001059

PROFESSIONAL SEAL:



ANTHONY D. SARNO, R.A.
FLORIDA REGISTERED ARCHITECT
LICENSE NUMBER AR95308

SUBMITTAL DESCRIPTION / MILESTONE:

**DEVELOPMENT
APPLICATION
January 14, 2013**

REVISIONS:

NO.	DESCRIPTION

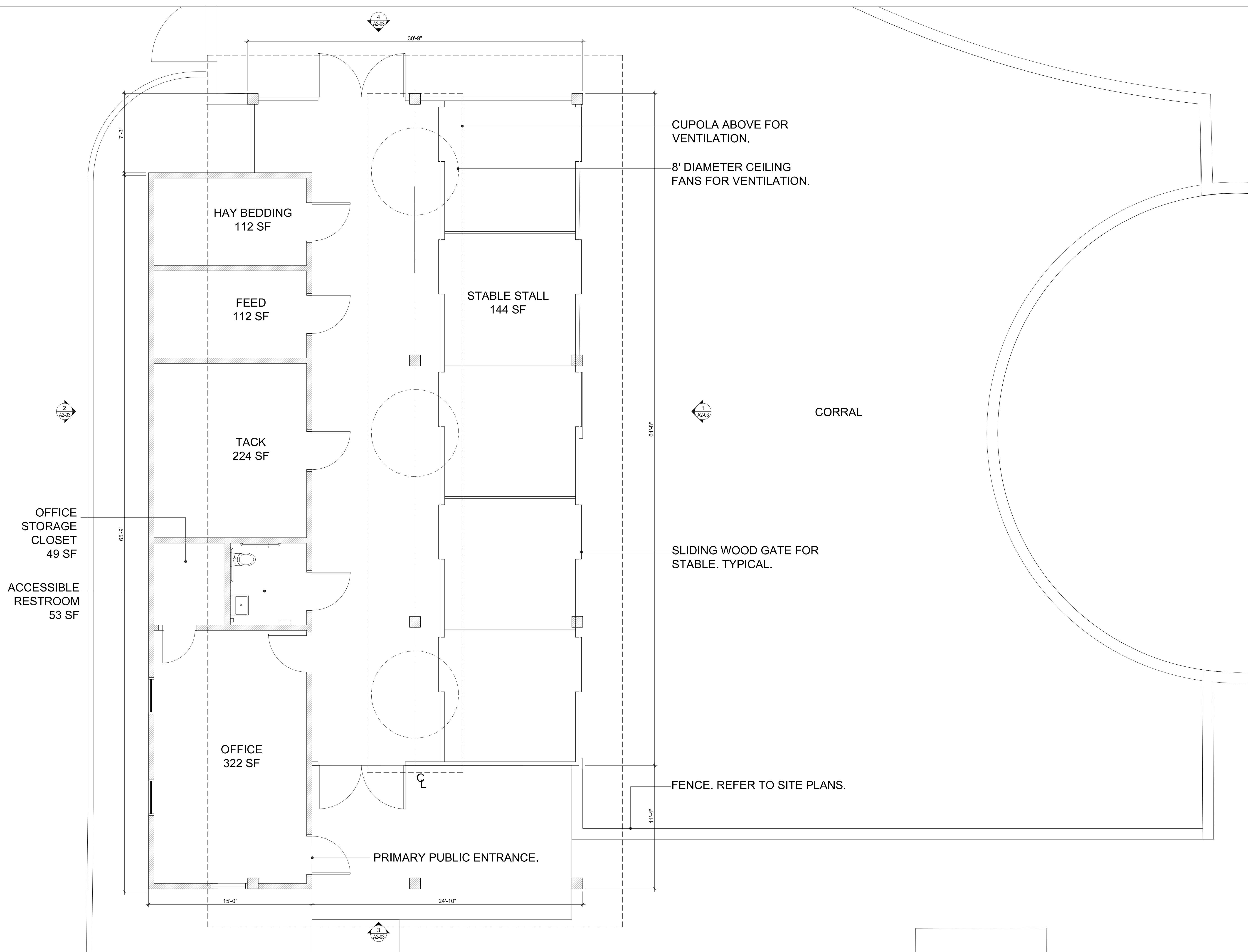
DRAWING SHEET INFORMATION

BA PROJECT NO.: 12010
SCALE: AS NOTED
DATE: 01/14/2013
DRAWN BY: AAG
CHECKED BY: ADS
CADD FILE: a_fp_201.dwg

DRAWING TITLE:

**HORSE STABLES
FIRST FLOOR
PLAN**

SHEET NO.

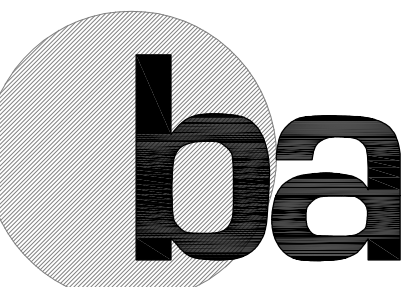


01 HORSE STABLE FLOOR PLAN
A2-01 SCALE: 1/4" = 1'-0"



A2-01

K:\2012\1011 - ba - Truman Waterfront Park\Drawings\A2-01.dwg, 2/2/2013 10:21:21 AM, scale: 1/4" = 1'-0", author: jgmb



**BERMELLO AJAMIL
& PARTNERS INC.**

Architecture • Engineering • Planning
Interior Design • Landscape Architecture
2601 South Bayshore Drive
Suite 1000
Miami, Florida 33133
(305) 859-2050
Fax (305) 860-3700

PREPARED FOR/OWNER:

CITY OF KEY WEST, FL
P. O. BOX 1409
3140 FLAGLER AVENUE
KEY WEST, FL 33041



PROJECT NAME:

**TRUMAN
WATERFRONT
PARK**

PROJECT LOCATION/ADDRESS:

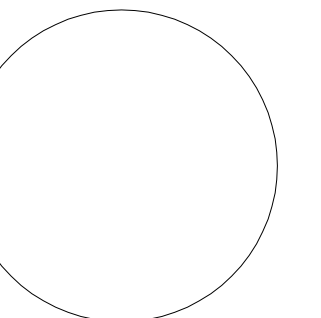
TRUMAN WATERFRONT PARK WEST
OF FORT STREET AND THE TRUMAN
ANNEX DEVELOPMENT, NORTH OF
KEY WEST NAVAL BASE

SUB-CONSULTANT INFORMATION:

mbi | k2m
ARCHITECTURE, INC.

1001 Whitehead St., Suite 101
Key West, Florida 33040
Tel: 305-292-7722
Fax: 305-292-2162
Email: info@mbi-k2m.com
URL: www.mbi-k2m.com
PROF. REG. AA26001059

PROFESSIONAL SEAL:



ANTHONY D. SARNO, R.A.
FLORIDA REGISTERED ARCHITECT
LICENSE NUMBER AR95308

SUBMITTAL DESCRIPTION / MILESTONE:

**DEVELOPMENT
APPLICATION
January 14, 2013**

REVISIONS:

NO.	DESCRIPTION

DRAWING SHEET INFORMATION

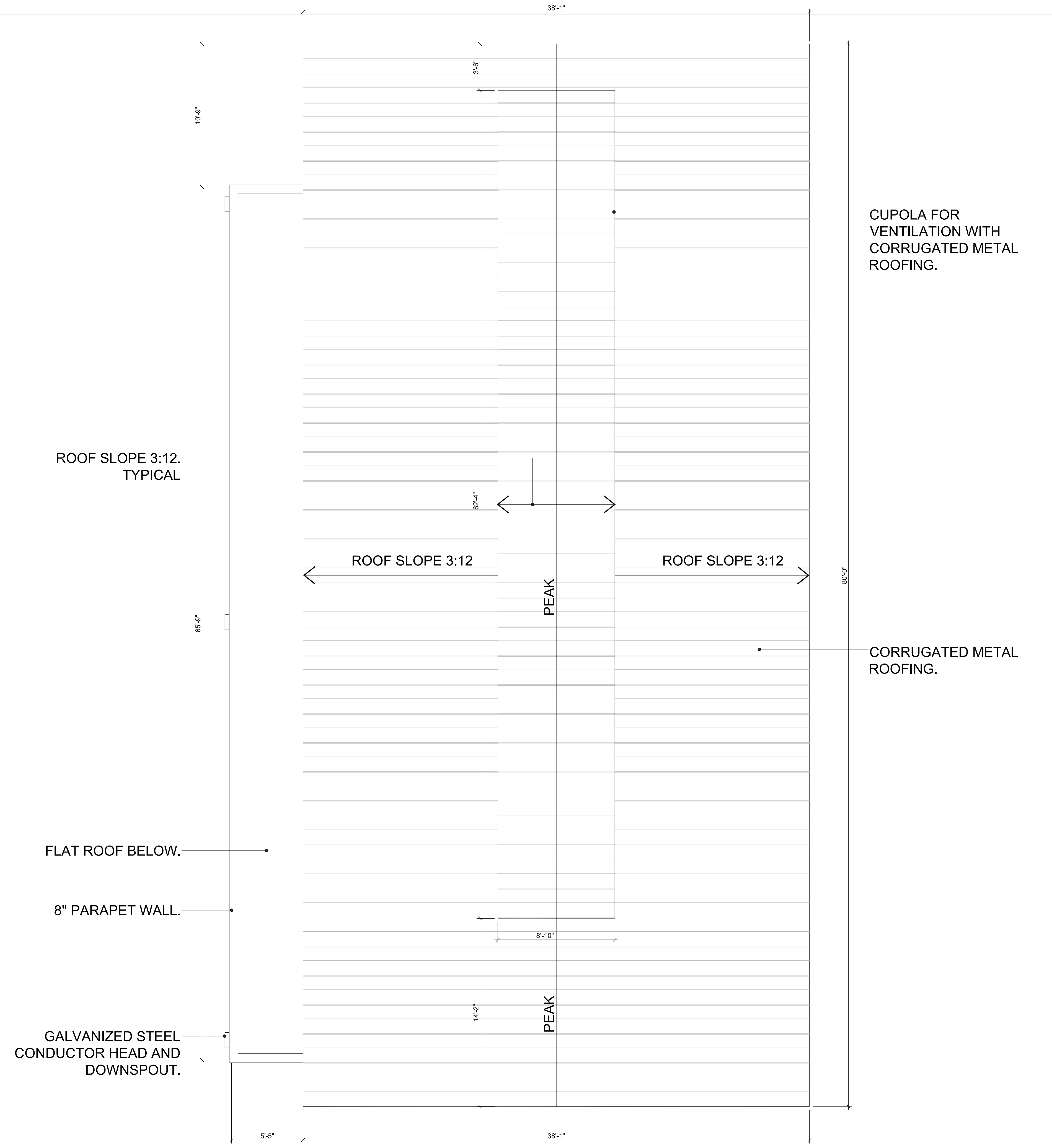
BA PROJECT NO.: 12010
SCALE: AS NOTED
DATE: 01/14/2013
DRAWN BY: AAG
CHECKED BY: ADS
CADD FILE: a_rp_202.dwg

DRAWING TITLE:

**HORSE STABLES
ROOF PLAN**

SHEET NO.

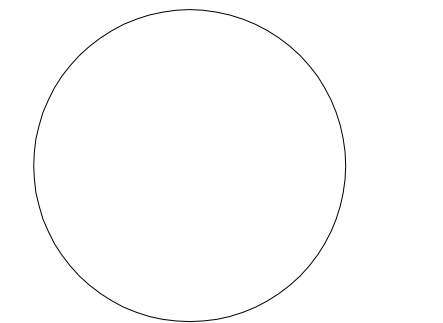
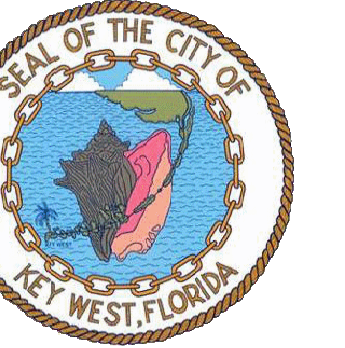
A2-02

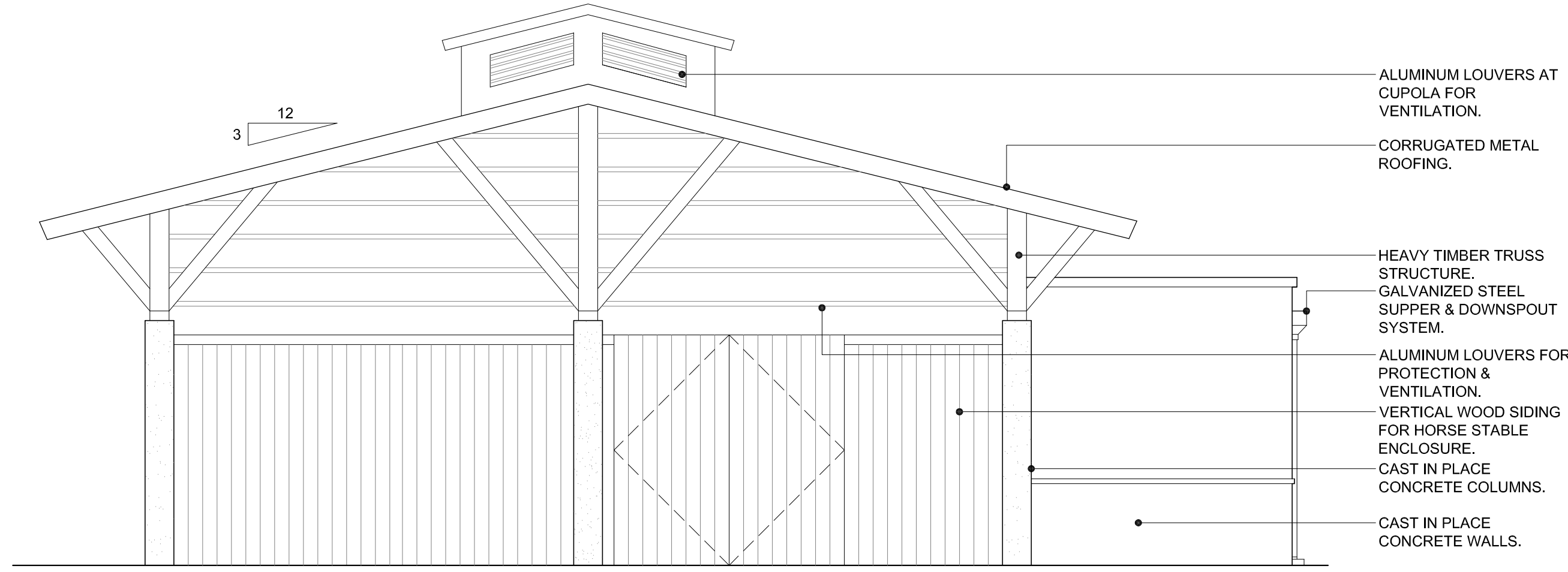


01
A2-02 HORSE STABLE ROOF PLAN
SCALE: 1/4" = 1'-0"

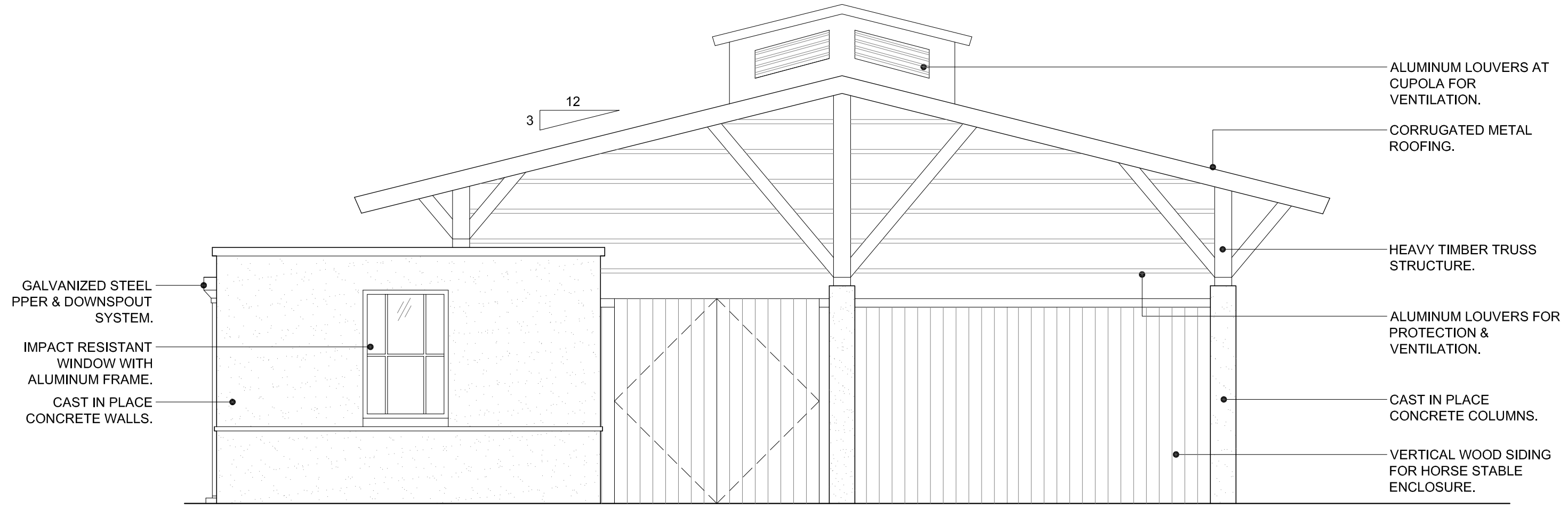


\\s01021266\0201 - 04 - Truman Waterfront Park\Drawings\Arch\0202.dwg, 10/20/13 10:13 AM, scale: 1/4" = 1'-0", user: amw

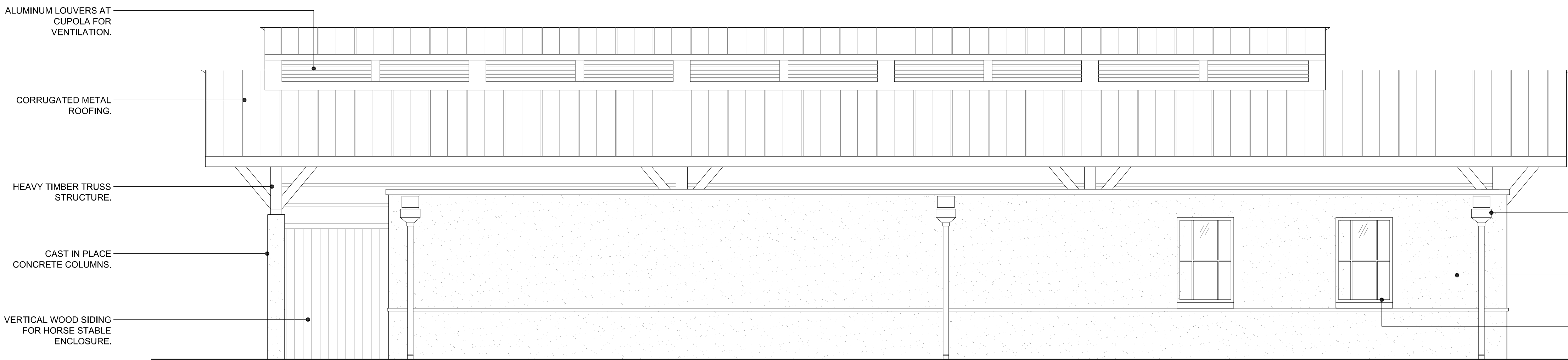




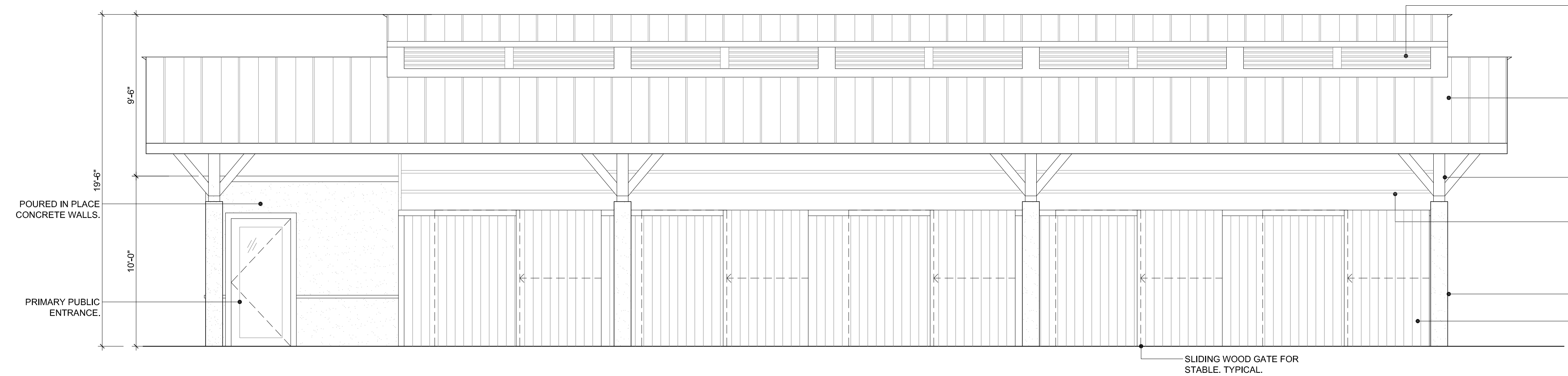
04 HORSE STABLE ELEVATION- WEST
SCALE: 1/4" = 1'-0"



03 HORSE STABLE ELEVATION- EAST
SCALE: 1/4" = 1'-0"



02 HORSE STABLE ELEVATION- SOUTH
SCALE: 1/4" = 1'-0"



01 HORSE STABLE ELEVATION- NORTH
SCALE: 1/4" = 1'-0"

