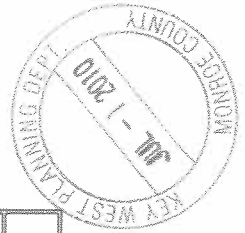
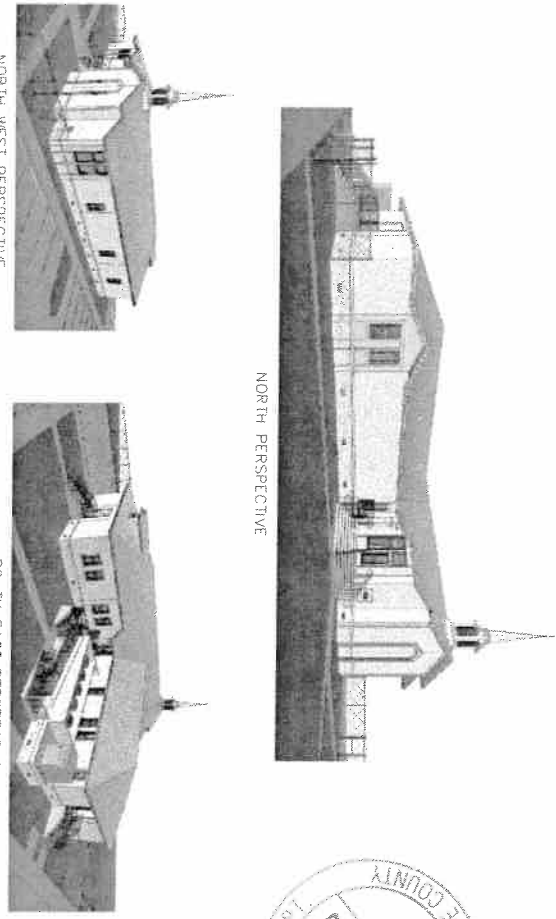


Modified Site Plans

DEVELOPMENT AND CONDITIONAL USE PLAN

Proposed New Meetinghouse for:
The Church of Jesus Christ
 of Latter-Day Saints
 3424 Northside Drive, Key West, FL 33040



INTERGOVERNMENTAL COORDINATION REQUIRED

110 - City of Key West, Florida (COW)
 State Florida State Department of Community Affairs (SDCA)
 State Department of Community Affairs (SDCA)
 120 - Key West Planning and Zoning Commission (KWPC)
 125 - Key West Planning and Zoning Commission (KWPC)
 Acknowledged from: entered by: [Name]

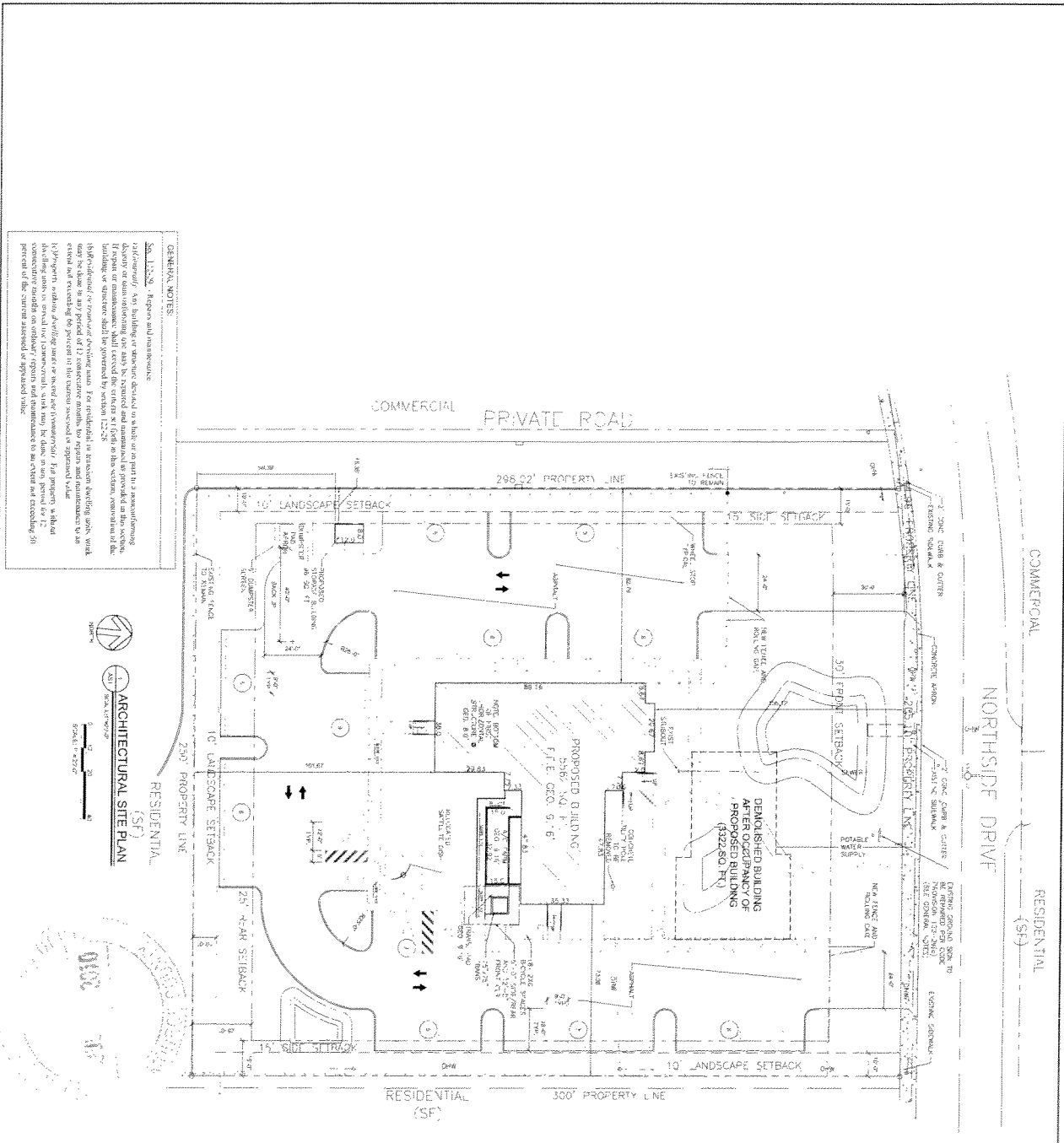
KEY PERSONS

Owner: The Church of Jesus Christ of Latter-Day Saints 3424 Northside Drive Key West, FL 33040	Civil: Perez Engineering & Development, Inc. 1010 Kennedy Drive, Suite 400 Key West, FL 33040 (305) 293-9440	Structural: McInroy Engineering 1835 Edgewater Dr. Orlando, FL 32804 (407) 245-8775	Electrical: Peninsula Engineering 2016 Alden Road Orlando, FL 32803 (407) 246-1688
Architect: McCreo Architects & Engineers, Inc. 500 East Princeton Street Orlando, FL 32803 (407) 898-4821	Surveyor: R.E. Reece P.A. 30364 Quail Roost Trail Big Pine Key, FL 33043 (305) 872-5622	Landscape: Ecoscapes/Indigenous Design Group 1120 Seminary Street Key West, FL 33040 (305) 797-0633	

DRAWING INDEX

SHEET #	SHEET TITLE
001	COVER SHEET
010	GENERAL NOTES
020	CONSTRUCTION MANAGEMENT PLAN
030	CONSTRUCTION MANAGEMENT PLAN
040	CONSTRUCTION MANAGEMENT PLAN
050	CONSTRUCTION MANAGEMENT PLAN
060	CONSTRUCTION MANAGEMENT PLAN
070	CONSTRUCTION MANAGEMENT PLAN
080	CONSTRUCTION MANAGEMENT PLAN
090	CONSTRUCTION MANAGEMENT PLAN
100	CONSTRUCTION MANAGEMENT PLAN
110	CONSTRUCTION MANAGEMENT PLAN
120	CONSTRUCTION MANAGEMENT PLAN
130	CONSTRUCTION MANAGEMENT PLAN
140	CONSTRUCTION MANAGEMENT PLAN
150	CONSTRUCTION MANAGEMENT PLAN
160	CONSTRUCTION MANAGEMENT PLAN
170	CONSTRUCTION MANAGEMENT PLAN
180	CONSTRUCTION MANAGEMENT PLAN
190	CONSTRUCTION MANAGEMENT PLAN
200	CONSTRUCTION MANAGEMENT PLAN
210	CONSTRUCTION MANAGEMENT PLAN
220	CONSTRUCTION MANAGEMENT PLAN
230	CONSTRUCTION MANAGEMENT PLAN
240	CONSTRUCTION MANAGEMENT PLAN
250	CONSTRUCTION MANAGEMENT PLAN
260	CONSTRUCTION MANAGEMENT PLAN
270	CONSTRUCTION MANAGEMENT PLAN
280	CONSTRUCTION MANAGEMENT PLAN
290	CONSTRUCTION MANAGEMENT PLAN
300	CONSTRUCTION MANAGEMENT PLAN

<p>Project by:</p> <p>THE CHURCH OF JESUS CHRIST OF LATTER-DAY SAINTS</p>	<p>Description:</p> <p>LDS - KEY WEST</p> <p>5424 NORTHSIDE DRIVE KEY WEST, FL 33040</p>	<p>Author: A. WESS, JR. Title: ARCHITECT License No. 4837132</p>	<p>McCreo ARCHITECTS & ENGINEERS, INC. 500 EAST PRINCETON STREET ORLANDO, FL 32803 P.O. BOX 20088 ORLANDO, FL 32820 Phone: (407) 898-4821 Fax: (407) 898-4822 www.mccreo.com</p>
<p>Sheet:</p> <p>G101</p>	<p>Conditional Use Permit</p>	<p>COVER SHEET DRAWING BOARD EXHIBIT MAP</p>	



PROJECT DESCRIPTION	
ZONING: SF - SINGLE FAMILY	PROJECT SITE SIZE: 1.72 ACRES (74,929 S.F.)
LEGAL DESCRIPTION: SEE ENCLOSED SURVEY	ALTERNATE KEY: 1098881
PARCEL: D:\00088830\000800	STRUCTURE AREAS: 5,862 S.F.
BUILDING SIZE: 58,541 S.F.	ACCESSORY STRUCTURE: 107,014 S.F.
FLOOR AREA RATIO: ALLOWED: 0.25 (PROPOSED: 0.25)	HEIGHT: ALLOWED: 26'-0" FOR NON-HABITABLE SPACE WITH PITCHED ROOF
EXISTING: 33'-0" 112' FROM CROWN OF ROAD	PROPOSED: 24'-11" 112' TO ROOF RIDGE FROM FIN. FLR.
REQUEST VARIANCE FOR STEEPLE HEIGHT	TOP OF STEEPLE: 49.82'
LOT COVERAGE: SITE AREA: 74,929 S.Q. FT. EXISTING: 1,826 S.Q. FT. PROPOSED: 38,919 S.Q. FT. = 0.53	IMPERVIOUS SURFACE RATIO: ALLOWED: 60% (PROPOSED: 60%)
PARKING SPACES: REQUIRED: (1) SPACE PER 6 SEATS = 1826 ÷ 6 = 307 SPACES OR (1) SPACE PER 160 S.F. = 126 S.F. / 160 S.F. = 9 SPACES PROPOSED: 70	BICYCLE SPACES: REQUIRED: 10% OF 37 = 4 SPACES PROPOSED: 8 SPACES
LAND USE: EXISTING: PLACE OF WORSHIP PROPOSED: PLACE OF WORSHIP	BUILDING SETBACKS: FRONT: 30' SIDE: 15' REAR: 25'
LANDSCAPE: PARKING LOT: REQUIRED: 10 STRIP PROPOSED: 10 STRIP	INTERVAL: 20% RATIO PROPOSED: (SEE LANDSCAPE LAM & LA2)
OPEN SPACE RATIO: REQUIRED: 20% RATIO PROPOSED: (SEE LANDSCAPE LAM & LA2)	GRADES: EXISTING GRADES: SEE SITE SURVEY PROPOSED GRADES: SEE CIVIL DRAWING SHEET C-1

McCree
ARCHITECTS & ENGINEERS, INC.
101 S. PULASKI ST., SUITE 100
MEMPHIS, TN 38102
PH: 901.525.2200 FAX: 901.525.2201
WWW.MCCREE.COM

THE CHURCH OF JESUS CHRIST OF LATTER-DAY SAINTS

Project for: **LDS - KEY WEST**

5424 NORTHSIDE DRIVE
KEY WEST, FL 34881

Architect: **McCree**
Drawing #: **AA0002700**
Revision: **01**

Scale: **AS1**

GENERAL NOTES:

1. **Site:** 1.72-acre property located at the intersection of Commercial Private Road and Northside Drive, Key West, Florida.

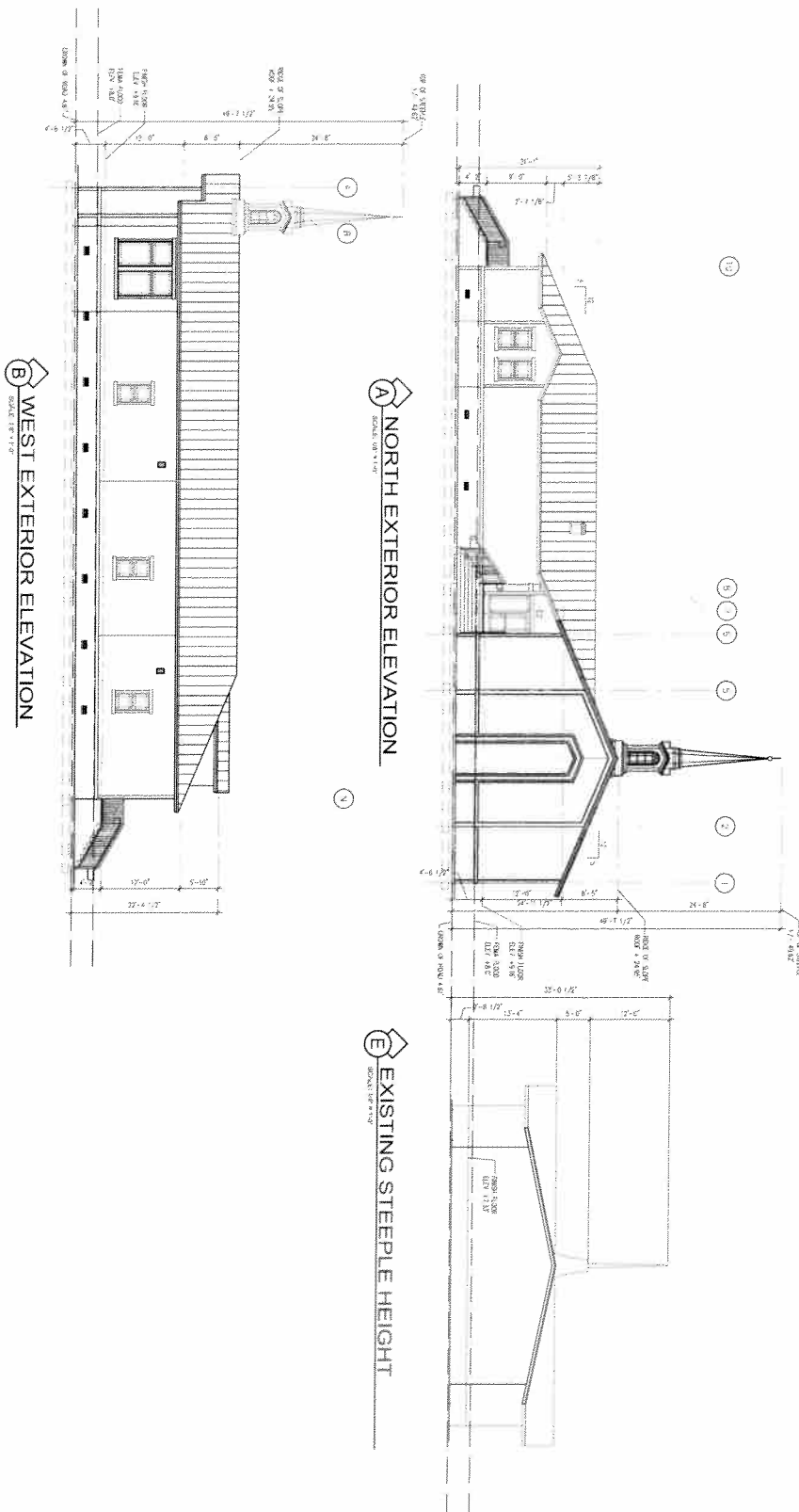
2. **Proposed Building:** A new 58,541 S.F. building with a 107,014 S.F. accessory structure.

3. **Demolished Building:** A 107,014 S.F. building to be demolished after occupancy of the proposed building.

4. **Setbacks:** 10' Landscape Setback, 25' Rear Setback, 30' Front Setback.

5. **Property Lines:** 296' 02" Property Line, 300' Property Line, 230' Property Line.

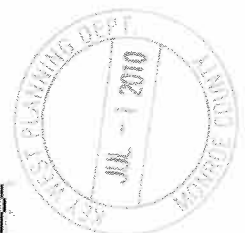
6. **Other Features:** 20' Conc. curb & gutters, 2' concrete sidewalk, 2' concrete apron, 2' concrete curb & gutters, 2' concrete sidewalk, 2' concrete apron, 2' concrete curb & gutters, 2' concrete sidewalk, 2' concrete apron.



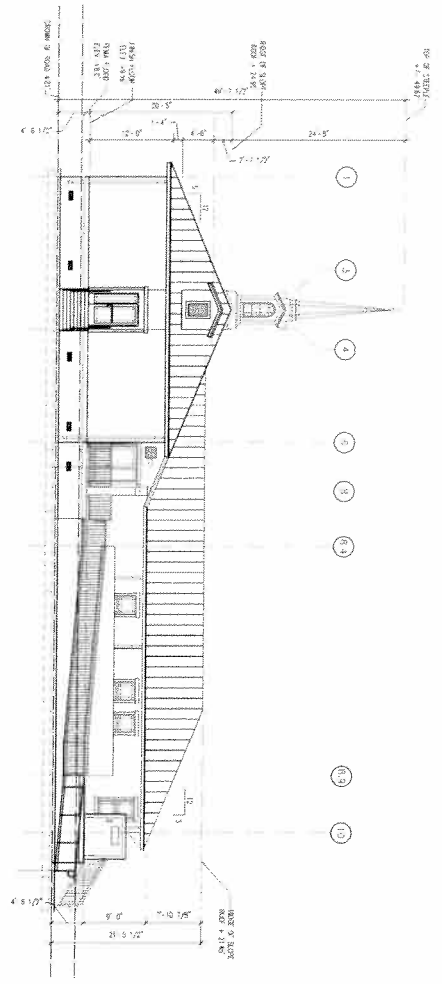
A NORTH EXTERIOR ELEVATION
SCALE: 1/8" = 1'-0"

B WEST EXTERIOR ELEVATION
SCALE: 1/8" = 1'-0"

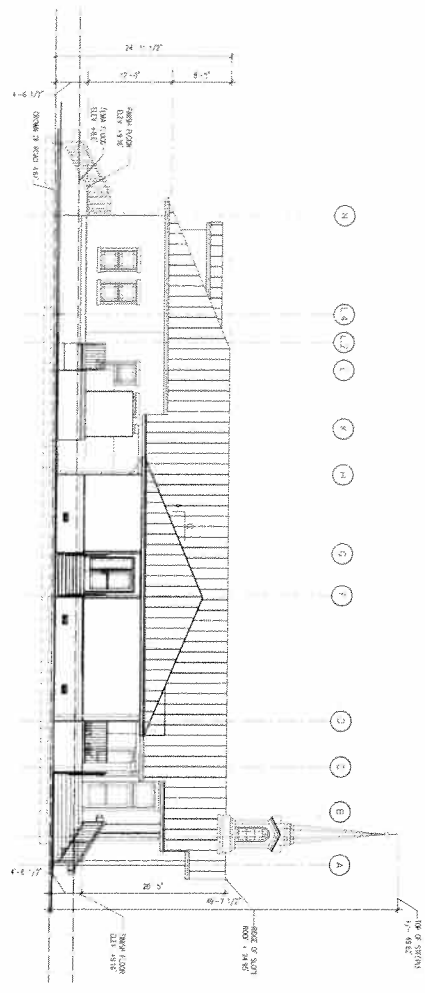
C EXISTING STEEPLE HEIGHT
SCALE: 1/8" = 1'-0"



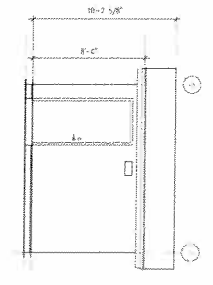
SHEET A201	EXTERIOR ELEVATIONS AND DETAILS	PROJECT: THE CHURCH OF JESUS CHRIST OF LATTER-DAY SAINTS	DESCRIPTION: LDS - KEY WEST	ARCHITECT: MCCREE ARCHITECTS & ENGINEERS, INC. 105 S. IMPERIAL BLVD., SUITE 110, KEY WEST, FL 33549-1100 PHONE: 305-857-4007 FAX: 305-857-4008
		CONDITIONAL USE PERMIT VARIANCE	3424 NORTHSHORE DR/MS KEY WEST, FL 33846	



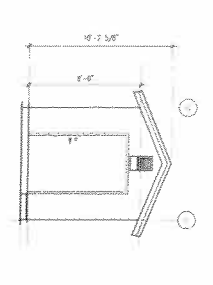
A SOUTH ELEVATION
SCALE: 1/8" = 1'-0"



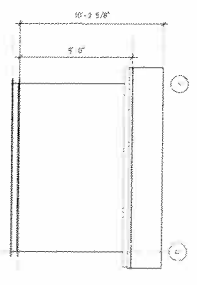
B EAST ELEVATION
SCALE: 1/8" = 1'-0"



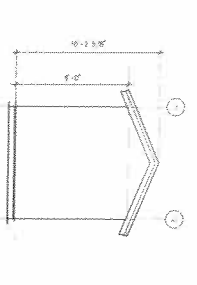
C STORAGE ROOM EAST ELEVATION
SCALE: 1/8" = 1'-0"



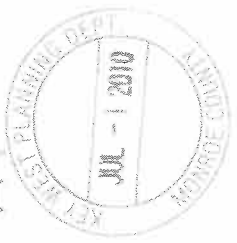
D STORAGE ROOM NORTH ELEVATION
SCALE: 1/8" = 1'-0"



E STORAGE ROOM WEST ELEVATION
SCALE: 1/8" = 1'-0"



F STORAGE ROOM SOUTH ELEVATION
SCALE: 1/8" = 1'-0"



Sheet
A202

EXTERIOR ELEVATIONS

Project No.	20087-0506010001
Client	THE CHURCH OF JESUS CHRIST OF LATTER-DAY SAINTS
Project Name	1824 NORTH HOUSTON DRIVE, KEY WEST, FL 33041
Revision	01/11/11
Scale	1/8" = 1'-0"
Author	JTK
Check	JTK
Drawn	JTK
Scale	1/8" = 1'-0"
Project No.	20087-0506010001
Client	THE CHURCH OF JESUS CHRIST OF LATTER-DAY SAINTS
Project Name	1824 NORTH HOUSTON DRIVE, KEY WEST, FL 33041
Revision	01/11/11
Scale	1/8" = 1'-0"
Author	JTK
Check	JTK
Drawn	JTK
Scale	1/8" = 1'-0"

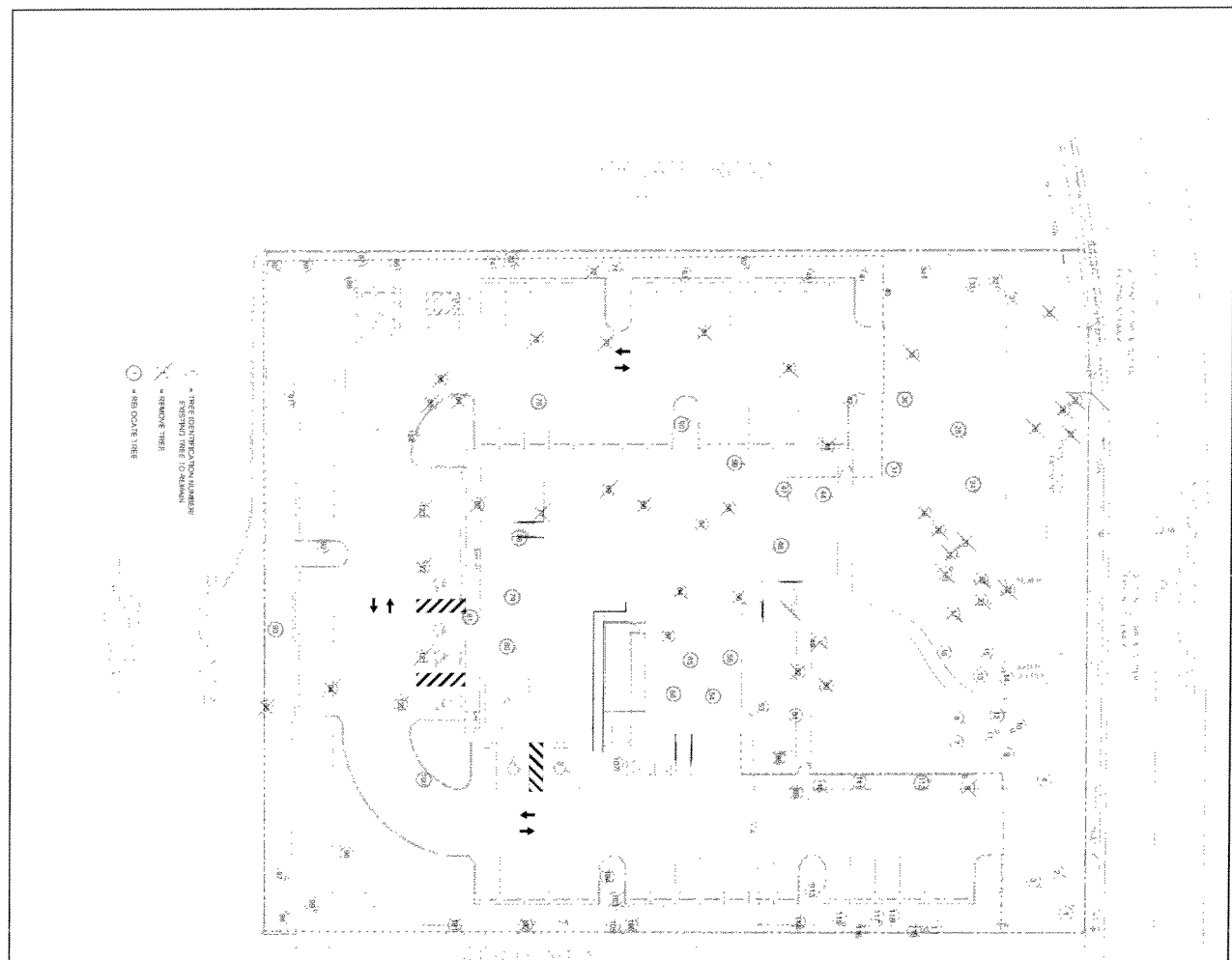
Project for:
THE CHURCH OF JESUS CHRIST OF LATTER-DAY SAINTS

Description
LDS - KEY WEST
1824 NORTH HOUSTON DRIVE
KEY WEST, FL 33041

Author: JTK
Check: JTK
Date: 01/11/11

Scale: 1/8" = 1'-0"

McCree
ARCHITECTS & ENGINEERS, INC.
800 E. PENNSYLVANIA, SUITE 1000
P.O. BOX 17599, ORLANDO, FL 32817-0599
Phone: 407-248-8877 Fax: 407-248-8870 www.mccree.com



Tree #	Tree Name	Tree Size	Tree Location	Tree Status	Tree Notes
1	COVE PALM	12' H	100' W	REMOVE	...
2	COVE PALM	12' H	100' W	REMOVE	...
3	COVE PALM	12' H	100' W	REMOVE	...
4	COVE PALM	12' H	100' W	REMOVE	...
5	COVE PALM	12' H	100' W	REMOVE	...
6	COVE PALM	12' H	100' W	REMOVE	...
7	COVE PALM	12' H	100' W	REMOVE	...
8	COVE PALM	12' H	100' W	REMOVE	...
9	COVE PALM	12' H	100' W	REMOVE	...
10	COVE PALM	12' H	100' W	REMOVE	...
11	COVE PALM	12' H	100' W	REMOVE	...
12	COVE PALM	12' H	100' W	REMOVE	...
13	COVE PALM	12' H	100' W	REMOVE	...
14	COVE PALM	12' H	100' W	REMOVE	...
15	COVE PALM	12' H	100' W	REMOVE	...
16	COVE PALM	12' H	100' W	REMOVE	...
17	COVE PALM	12' H	100' W	REMOVE	...
18	COVE PALM	12' H	100' W	REMOVE	...
19	COVE PALM	12' H	100' W	REMOVE	...
20	COVE PALM	12' H	100' W	REMOVE	...
21	COVE PALM	12' H	100' W	REMOVE	...
22	COVE PALM	12' H	100' W	REMOVE	...
23	COVE PALM	12' H	100' W	REMOVE	...
24	COVE PALM	12' H	100' W	REMOVE	...
25	COVE PALM	12' H	100' W	REMOVE	...
26	COVE PALM	12' H	100' W	REMOVE	...
27	COVE PALM	12' H	100' W	REMOVE	...
28	COVE PALM	12' H	100' W	REMOVE	...
29	COVE PALM	12' H	100' W	REMOVE	...
30	COVE PALM	12' H	100' W	REMOVE	...
31	COVE PALM	12' H	100' W	REMOVE	...
32	COVE PALM	12' H	100' W	REMOVE	...
33	COVE PALM	12' H	100' W	REMOVE	...
34	COVE PALM	12' H	100' W	REMOVE	...
35	COVE PALM	12' H	100' W	REMOVE	...
36	COVE PALM	12' H	100' W	REMOVE	...
37	COVE PALM	12' H	100' W	REMOVE	...
38	COVE PALM	12' H	100' W	REMOVE	...
39	COVE PALM	12' H	100' W	REMOVE	...
40	COVE PALM	12' H	100' W	REMOVE	...
41	COVE PALM	12' H	100' W	REMOVE	...
42	COVE PALM	12' H	100' W	REMOVE	...
43	COVE PALM	12' H	100' W	REMOVE	...
44	COVE PALM	12' H	100' W	REMOVE	...
45	COVE PALM	12' H	100' W	REMOVE	...
46	COVE PALM	12' H	100' W	REMOVE	...
47	COVE PALM	12' H	100' W	REMOVE	...
48	COVE PALM	12' H	100' W	REMOVE	...
49	COVE PALM	12' H	100' W	REMOVE	...
50	COVE PALM	12' H	100' W	REMOVE	...
51	COVE PALM	12' H	100' W	REMOVE	...
52	COVE PALM	12' H	100' W	REMOVE	...
53	COVE PALM	12' H	100' W	REMOVE	...
54	COVE PALM	12' H	100' W	REMOVE	...

Project #

THE CHURCH OF JESUS CHRIST OF LATTER-DAY SAINTS

Description

LDS - KEY WEST

500 NORTHWOOD DRIVE
KEY WEST, FL 33540

Indigenous Design Group INC.

License #

657-2627 R. | 305-294-7148

CONDITIONAL USE REPORT

Tree Committee

6/26/10

Compliance with the Plan Book

Project #

000-0000

000-0000

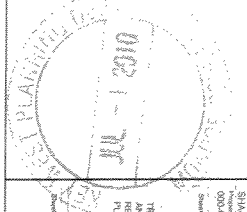
000-0000

000-0000

000-0000

THE REMOVAL AND RESTORATION PLAN

LA1



GENERAL INFORMATION

PROJECT NO. 14-0114
 DATE: 11/13/2014
 DRAWN BY: J. W. BROWN
 CHECKED BY: J. W. BROWN
 PROJECT NAME: CHURCH OF JESUS CHRIST OF LATTER-DAY SAINTS
 PROJECT ADDRESS: 1500 NORTH SIDE DRIVE, KEY WEST, FL 34634

LANDSCAPE DATA/CALCULATIONS

MINIMUM LANDSCAPE AREA
 1500 SQ. FT. (15' x 100')
 1500 SQ. FT. (15' x 100')

STREET FRONTAGE REQUIREMENT

MINIMUM FRONTAGE REQUIREMENT
 150' (15' x 10')

INTERIOR PLANNING REQUIREMENT

MINIMUM INTERIOR PLANNING REQUIREMENT
 1500 SQ. FT. (15' x 100')

REFERENCED/ADAPTED SCREENING

SCREENING REQUIREMENTS
 150' (15' x 10')

PLANT LIST

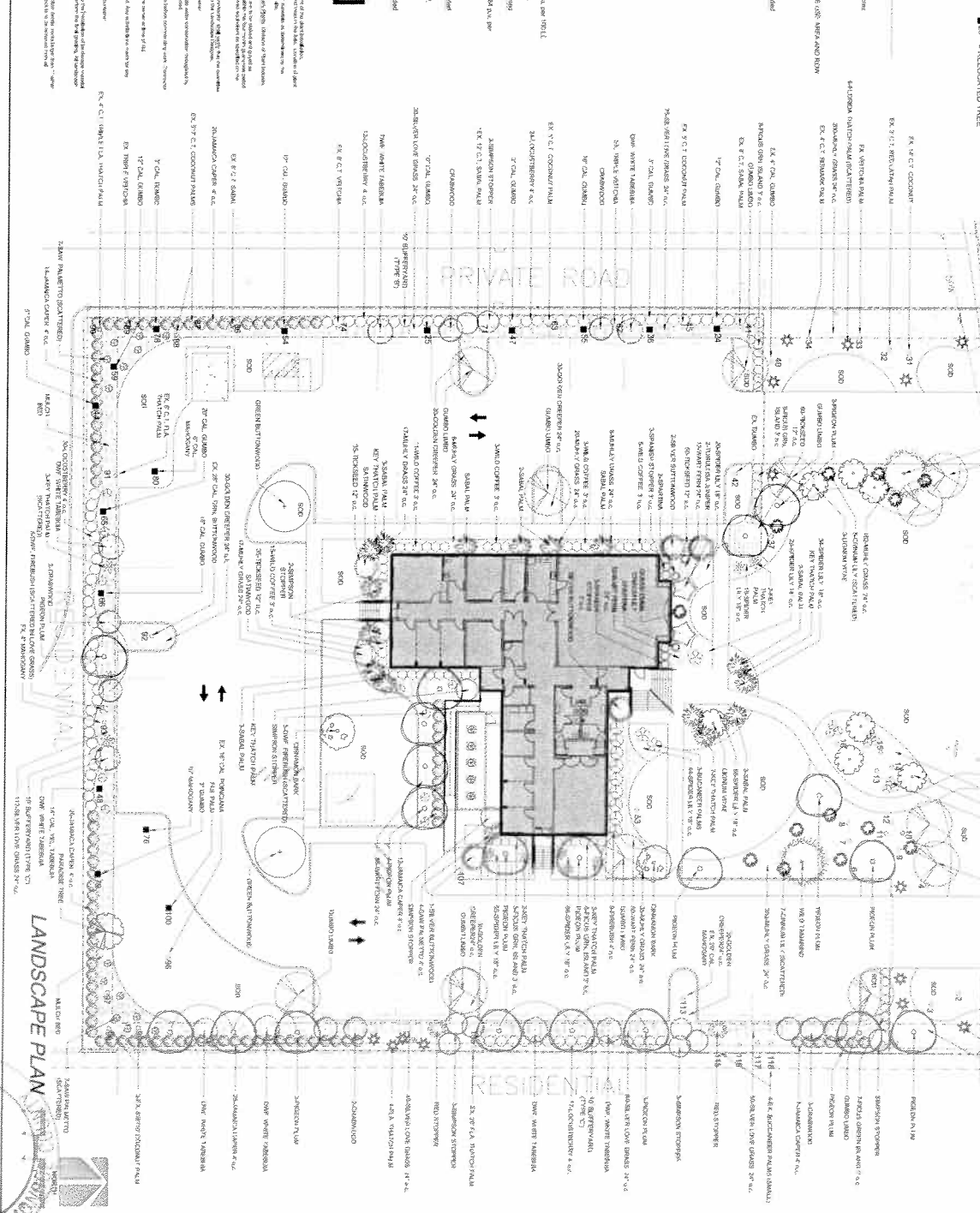
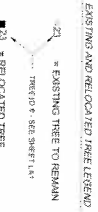
PLANT LIST
 150' (15' x 10')

PLANTING NOTES

PLANTING NOTES
 150' (15' x 10')

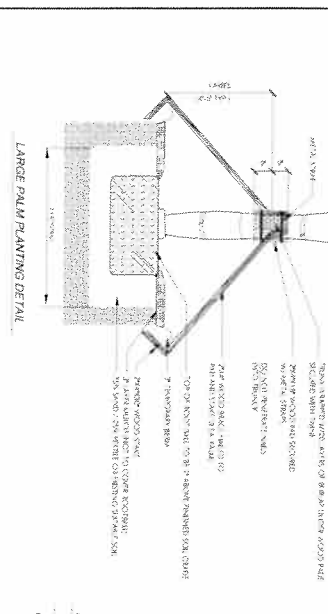
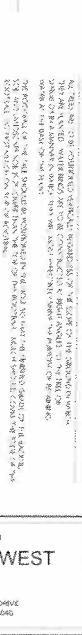
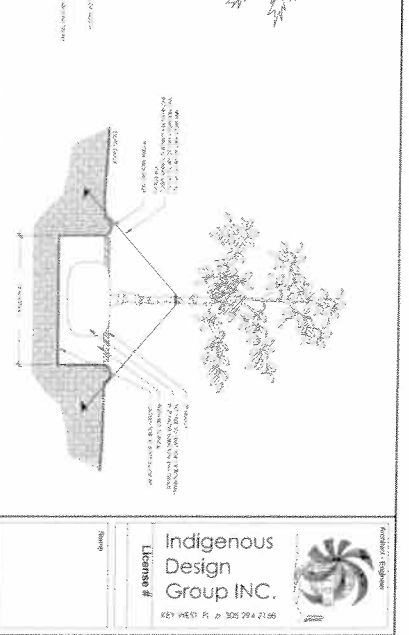
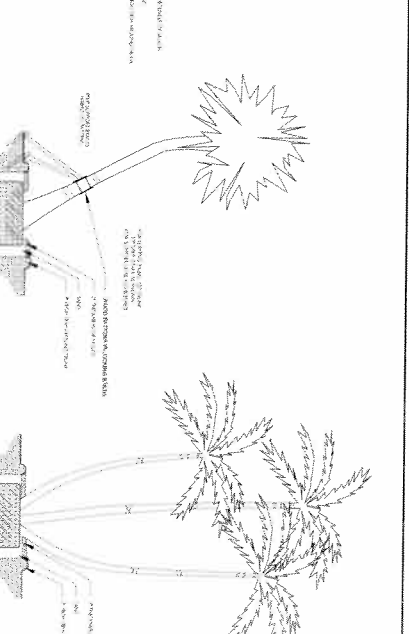
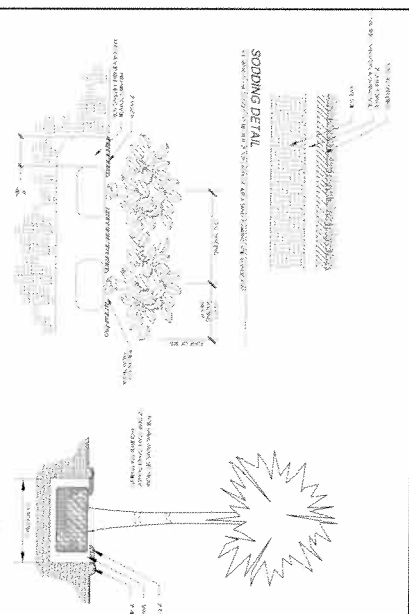
GENERAL NOTES

GENERAL NOTES
 150' (15' x 10')



<p>Project No. 14-0114</p> <p>Project Name: CHURCH OF JESUS CHRIST OF LATTER-DAY SAINTS</p> <p>Project Address: 1500 NORTH SIDE DRIVE, KEY WEST, FL 34634</p>	<p>Description: LDS - KEY WEST</p> <p>1500 NORTH SIDE DRIVE, KEY WEST, FL 34634</p>	<p>Indigenous Design Group INC.</p> <p>1500 NORTH SIDE DRIVE, KEY WEST, FL 34634</p>
---------------------------------------------------------------------------------------------------------------------------------------------------------------	-------------------------------------------------------------------------------------	--------------------------------------------------------------------------------------





GENERAL NOTES:
 ALL PLANTS 70% OF THE SPECIFIED SPECIES FOR PROPOSED MAINTENANCE SHALL BE NATIVE AS SPECIFIED IN THE MINIMUM NATIVE PLANT REQUIREMENT.
 100% IRRIGATION COVERAGE SHALL BE PROVIDED TO ALL PROPOSED PLANTING AREAS. SAID SYSTEM SHALL BE DESIGNED TO MAINTAIN WATER CONSERVATION AND SHALL MEET ALL APPLICABLE REGULATIONS AND STANDARDS OF ANY APPLICABLE AGENCIES.
 ALL LARGE CANOPY AND RED COATED TREES SHALL UTILIZE PROVISION ROBERTS IN BASE OF TREE.

PLANT SCHEDULE

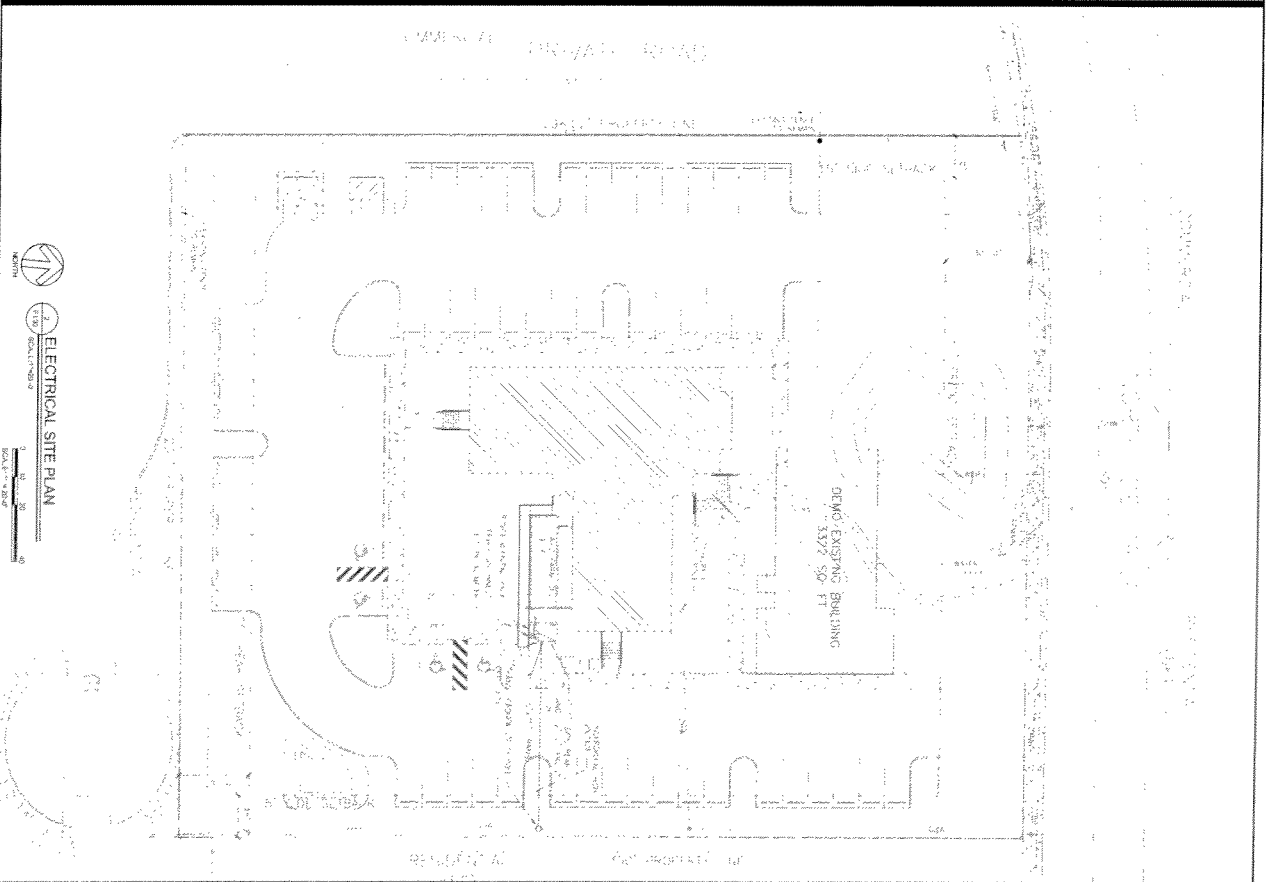
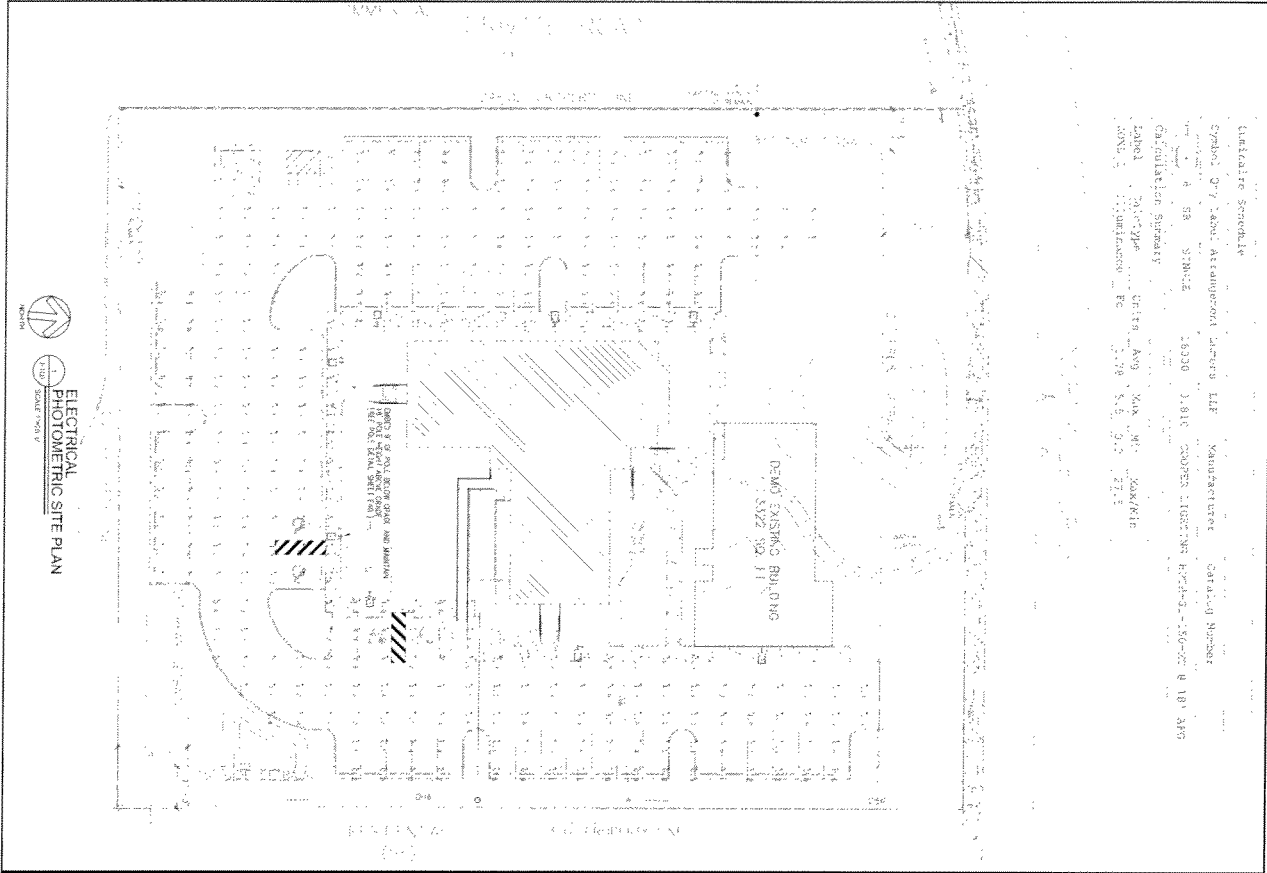
QTY	COMMON NAME	BOTANICAL NAME	SIZE	NOTE	NATIVE
15	SHRUB ONLY	Small shrubs	12\"/>		
15	NEE THEE COY PALM	Chamaedorea	6\"/>		
14	PALM COY PALM	Chamaedorea	6\"/>		
3	BROWNE PALM	Washingtonia	12\"/>		
2	GRAND BOTTLEWOOD	Bravaisia	12\"/>		
2	FLORIDA PALM	Chamaedorea	6\"/>		
2	WAX PALM	Chamaedorea	6\"/>		
2	PARROT PALM	Chamaedorea	6\"/>		
2	DWARF PALM	Chamaedorea	6\"/>		
2	WAX PALM	Chamaedorea	6\"/>		
2	FLORIDA PALM	Chamaedorea	6\"/>		
2	PARROT PALM	Chamaedorea	6\"/>		
2	DWARF PALM	Chamaedorea	6\"/>		

PLANT SCHEDULE AND DETAILS

LA3

INDIGENOUS DESIGN GROUP INC.

KEY WEST, FL 305 294 2106



E100

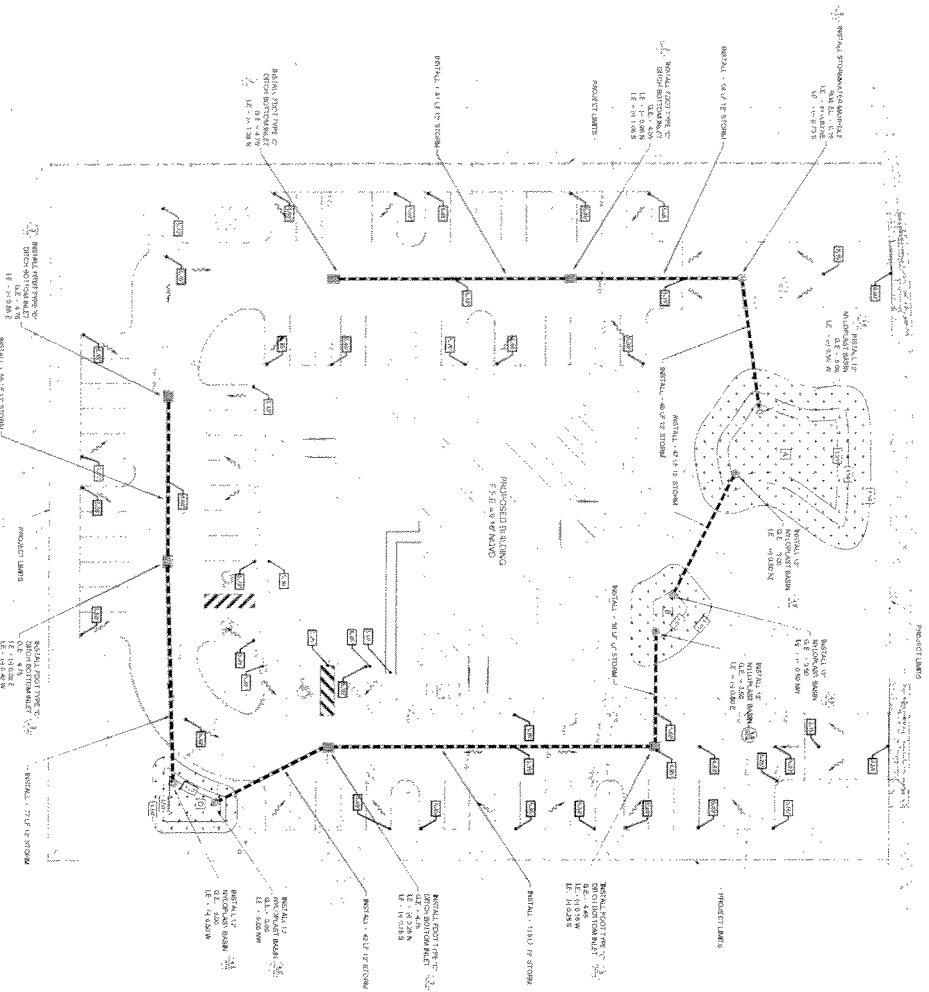
PENNSYLVANIA ENGINEERING IN

THE CHURCH OF JESUS CHRIST OF LATTER-DAY SAINTS

LDS - KEY WEST

5424 NORTH SIDE DRIVE
KEY WEST, FL 33040

EDWARD J. [unreadable]
ELECTRICAL PHOTOMETRIC SITE PLAN



Item	Description	Quantity	Unit	Material	Notes
1	Proposed Building	1	sq ft	111' x 111'	
2	Existing Building	1	sq ft	20' x 20'	
3	Parking Spaces	15	spaces		
4	Catch Basins	10	units	12" x 12"	
5	Manholes	5	units	48"	
6	Detention Basins	2	units	10' x 10'	
7	Stormwater Piping	1000	lineal ft	18"	
8	Stormwater Piping	500	lineal ft	36"	
9	Stormwater Piping	250	lineal ft	48"	
10	Stormwater Piping	100	lineal ft	60"	
11	Stormwater Piping	50	lineal ft	72"	
12	Stormwater Piping	25	lineal ft	90"	
13	Stormwater Piping	10	lineal ft	108"	
14	Stormwater Piping	5	lineal ft	144"	
15	Stormwater Piping	2	lineal ft	180"	
16	Stormwater Piping	1	lineal ft	216"	
17	Stormwater Piping	1	lineal ft	252"	
18	Stormwater Piping	1	lineal ft	288"	
19	Stormwater Piping	1	lineal ft	324"	
20	Stormwater Piping	1	lineal ft	360"	
21	Stormwater Piping	1	lineal ft	396"	
22	Stormwater Piping	1	lineal ft	432"	
23	Stormwater Piping	1	lineal ft	468"	
24	Stormwater Piping	1	lineal ft	504"	
25	Stormwater Piping	1	lineal ft	540"	
26	Stormwater Piping	1	lineal ft	576"	
27	Stormwater Piping	1	lineal ft	612"	
28	Stormwater Piping	1	lineal ft	648"	
29	Stormwater Piping	1	lineal ft	684"	
30	Stormwater Piping	1	lineal ft	720"	
31	Stormwater Piping	1	lineal ft	756"	
32	Stormwater Piping	1	lineal ft	792"	
33	Stormwater Piping	1	lineal ft	828"	
34	Stormwater Piping	1	lineal ft	864"	
35	Stormwater Piping	1	lineal ft	900"	
36	Stormwater Piping	1	lineal ft	936"	
37	Stormwater Piping	1	lineal ft	972"	
38	Stormwater Piping	1	lineal ft	1008"	
39	Stormwater Piping	1	lineal ft	1044"	
40	Stormwater Piping	1	lineal ft	1080"	
41	Stormwater Piping	1	lineal ft	1116"	
42	Stormwater Piping	1	lineal ft	1152"	
43	Stormwater Piping	1	lineal ft	1188"	
44	Stormwater Piping	1	lineal ft	1224"	
45	Stormwater Piping	1	lineal ft	1260"	
46	Stormwater Piping	1	lineal ft	1296"	
47	Stormwater Piping	1	lineal ft	1332"	
48	Stormwater Piping	1	lineal ft	1368"	
49	Stormwater Piping	1	lineal ft	1404"	
50	Stormwater Piping	1	lineal ft	1440"	
51	Stormwater Piping	1	lineal ft	1476"	
52	Stormwater Piping	1	lineal ft	1512"	
53	Stormwater Piping	1	lineal ft	1548"	
54	Stormwater Piping	1	lineal ft	1584"	
55	Stormwater Piping	1	lineal ft	1620"	
56	Stormwater Piping	1	lineal ft	1656"	
57	Stormwater Piping	1	lineal ft	1692"	
58	Stormwater Piping	1	lineal ft	1728"	
59	Stormwater Piping	1	lineal ft	1764"	
60	Stormwater Piping	1	lineal ft	1800"	
61	Stormwater Piping	1	lineal ft	1836"	
62	Stormwater Piping	1	lineal ft	1872"	
63	Stormwater Piping	1	lineal ft	1908"	
64	Stormwater Piping	1	lineal ft	1944"	
65	Stormwater Piping	1	lineal ft	1980"	
66	Stormwater Piping	1	lineal ft	2016"	
67	Stormwater Piping	1	lineal ft	2052"	
68	Stormwater Piping	1	lineal ft	2088"	
69	Stormwater Piping	1	lineal ft	2124"	
70	Stormwater Piping	1	lineal ft	2160"	
71	Stormwater Piping	1	lineal ft	2196"	
72	Stormwater Piping	1	lineal ft	2232"	
73	Stormwater Piping	1	lineal ft	2268"	
74	Stormwater Piping	1	lineal ft	2304"	
75	Stormwater Piping	1	lineal ft	2340"	
76	Stormwater Piping	1	lineal ft	2376"	
77	Stormwater Piping	1	lineal ft	2412"	
78	Stormwater Piping	1	lineal ft	2448"	
79	Stormwater Piping	1	lineal ft	2484"	
80	Stormwater Piping	1	lineal ft	2520"	
81	Stormwater Piping	1	lineal ft	2556"	
82	Stormwater Piping	1	lineal ft	2592"	
83	Stormwater Piping	1	lineal ft	2628"	
84	Stormwater Piping	1	lineal ft	2664"	
85	Stormwater Piping	1	lineal ft	2700"	
86	Stormwater Piping	1	lineal ft	2736"	
87	Stormwater Piping	1	lineal ft	2772"	
88	Stormwater Piping	1	lineal ft	2808"	
89	Stormwater Piping	1	lineal ft	2844"	
90	Stormwater Piping	1	lineal ft	2880"	
91	Stormwater Piping	1	lineal ft	2916"	
92	Stormwater Piping	1	lineal ft	2952"	
93	Stormwater Piping	1	lineal ft	2988"	
94	Stormwater Piping	1	lineal ft	3024"	
95	Stormwater Piping	1	lineal ft	3060"	
96	Stormwater Piping	1	lineal ft	3096"	
97	Stormwater Piping	1	lineal ft	3132"	
98	Stormwater Piping	1	lineal ft	3168"	
99	Stormwater Piping	1	lineal ft	3204"	
100	Stormwater Piping	1	lineal ft	3240"	

Category	Item	Quantity	Unit	Material	Notes
Proposed Building	Foundation	4.5	sq ft	2,600	5,000
	Floors	2.25	sq ft	1,300	2,812
	Walls	2.25	sq ft	1,300	2,812
	Roof	2.25	sq ft	1,300	2,812
	Interior	2.25	sq ft	1,300	2,812
Existing Building	Foundation	1.5	sq ft	847	6,018
	Interior	1.5	sq ft	847	6,018
Total	Stormwater Volume (FT³)				4,326

