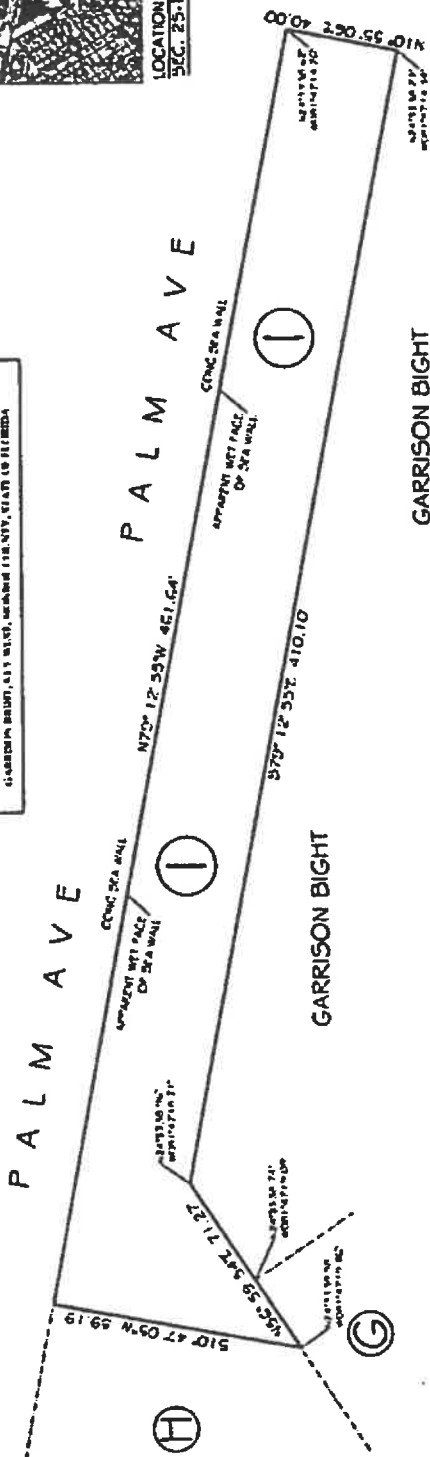
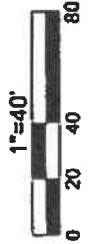


LOCATION MAP - NTS
SEC. 25-1625-R33E

**SPECIFIC PURPOSE SURVEY SKETCH TO
ILLUSTRATE SUBMERGED LAND LEASE AREAS**
GARRISON BIGHT, CITY OF PALM BEACH, COUNTY OF PALM BEACH, STATE OF FLORIDA



GRID NORTH



AREA DELINEATION	AREA
(1)	15,737.50 FT. +/-

SYMBOL LEGEND:

[Symbol]	CONC. SEA WALL
[Symbol]	APPROXIMATE FACE OF SEA WALL
[Symbol]	CONCRETE UTILITY POLE
[Symbol]	ELECTRIC UTILITY POLE
[Symbol]	LIGHT POLE
[Symbol]	WOOD POLE
[Symbol]	WOODEN CULVERT
[Symbol]	CONCRETE CULVERT
[Symbol]	WOOD UTILITY POLE
[Symbol]	WOOD POLE

ABBREVIATION LEGEND:

[Symbol]	IRON NAIL
[Symbol]	WOOD NAIL
[Symbol]	CONCRETE NAIL
[Symbol]	STEEL NAIL
[Symbol]	WOODEN CULVERT
[Symbol]	CONCRETE CULVERT
[Symbol]	WOOD UTILITY POLE
[Symbol]	WOOD POLE
[Symbol]	CONCRETE UTILITY POLE
[Symbol]	ELECTRIC UTILITY POLE
[Symbol]	LIGHT POLE
[Symbol]	WOOD POLE
[Symbol]	WOODEN CULVERT
[Symbol]	CONCRETE CULVERT
[Symbol]	WOOD UTILITY POLE
[Symbol]	WOOD POLE

**FLORIDA KEYS
LAND SURVEYING**
15750 OVERSEAS HIGHWAY
SUWANNOO RIVER FL 33042
PHONE: (305) 394-3200
FAX: (305) 394-7373
EMAIL: FLK@flkeysurveying.com



ALL RIGHTS RESERVED. THIS SURVEY WAS MADE IN ACCORDANCE WITH THE FLORIDA SURVEYING BOARD'S RULES AND REGULATIONS. THE QUALITY OF THIS SURVEY IS GUARANTEED TO BE AS HIGH AS REASONABLY PRACTICABLE UNDER THE CIRCUMSTANCES.

DATE: 1/14/09
PROJECT: 017 NOTICES
JOB NO.: 017-001
SHEET: 1 OF 1
PREPARED BY: [Name]
CHECKED BY: [Name]
DATE: 01/14/09