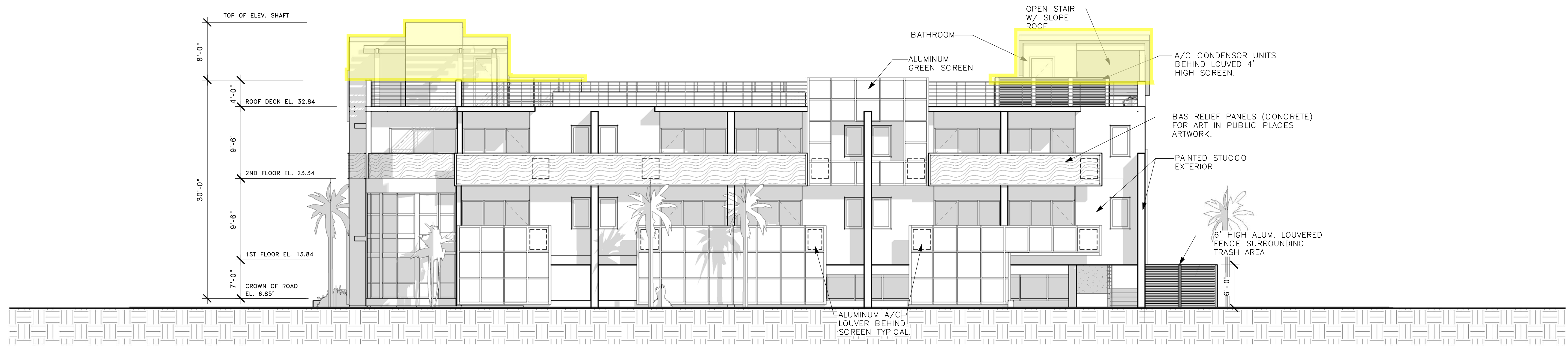
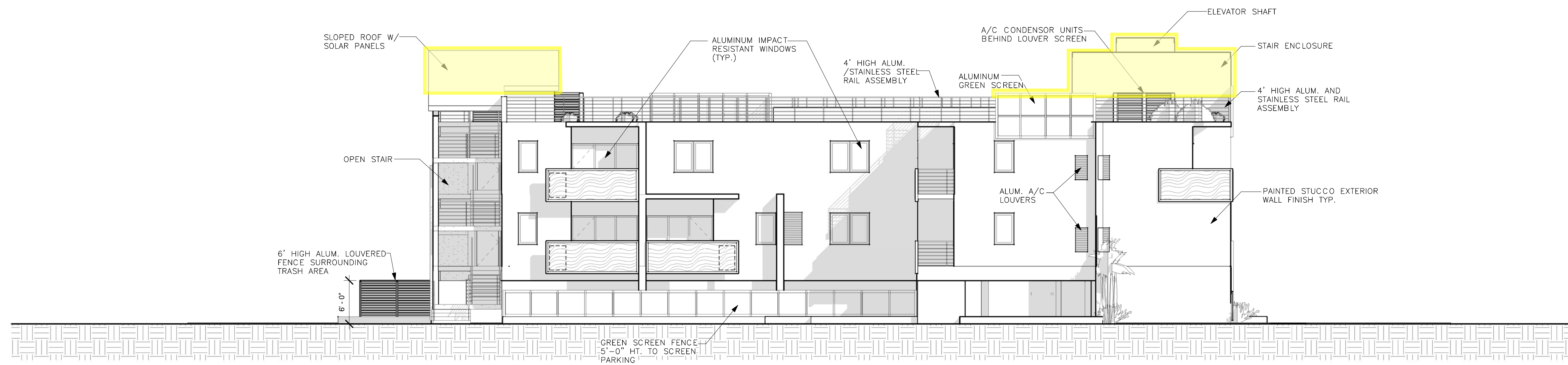


Proposed Plans - Areas over height limit highlighted yellow



NORTH WEST ELEVATION- SOUTH ST. SIDE

1/8" = 1'-0"



SOUTH EAST ELEVATION - GARDEN SIDE

1/8" = 1'-0"

WILLIAM P. HORN
ARCHITECT, P.A.

915 EATON ST.
KEY WEST,
FLORIDA
33040

TEL (305) 296-8302
FAX (305) 296-1033

LICENSE NO.
AA 0003040

TWO OCEAN INN
716-718 SOUTH STEET

THESE DRAWINGS MAY
NOT BE REPRODUCED
WITHOUT WRITTEN
AUTHORIZATION BY
WILLIAM P. HORN

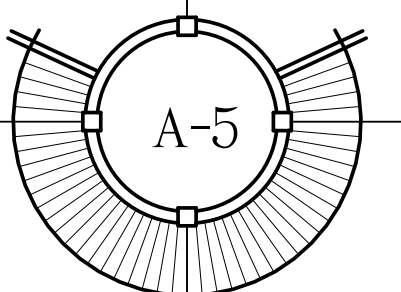
SEAL

DATE
3-21-14 DRC
5-12-14 PL. BD.
8-25-14 HARC

REVISIONS

DRAWN BY
OE

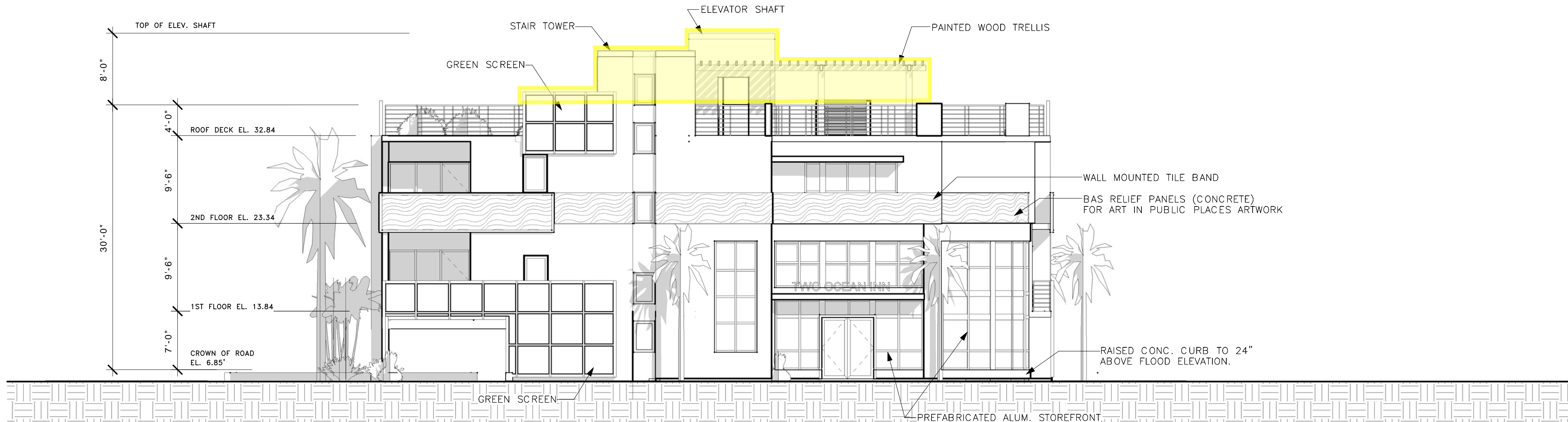
PROJECT
NUMBER
1324



TWO OCEAN INN

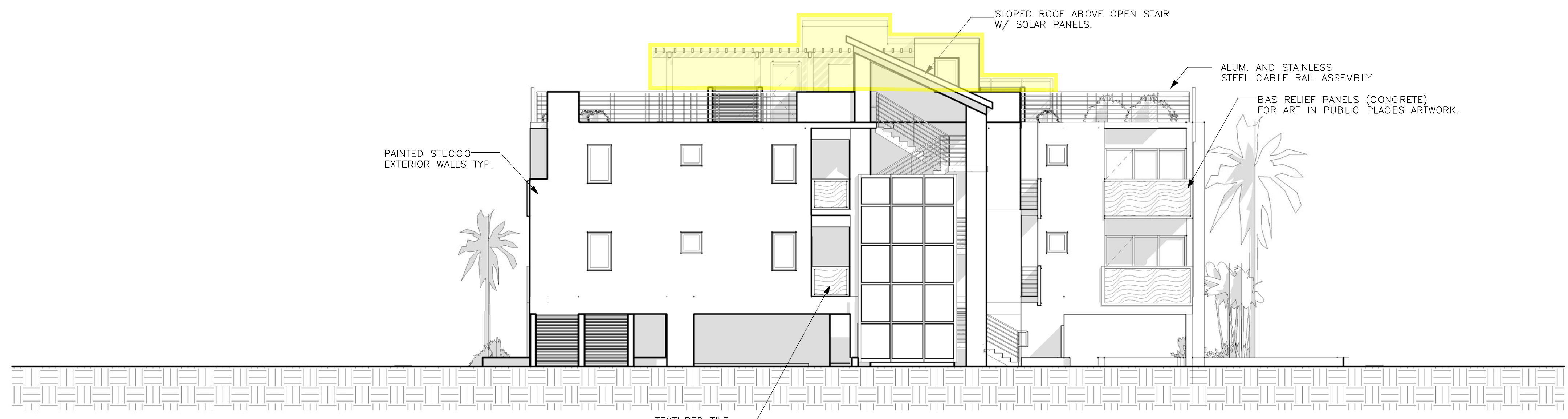
716-718 SOUTH STEET
KEY WEST, FL

Proposed Plans - Areas over height limit highlighted yellow



NORTH EAST ELEVATION -WILLIAM ST. SIDE

1/8" = 1'-0"



SOUTH WEST ELEVATION

1/8" = 1'-0"

WILLIAM P. HORN
ARCHITECT, P.A.

915 EATON ST.
KEY WEST,
FLORIDA
33040

TEL (305) 296-8302
FAX (305) 296-1033

LICENSE NO.
AA 0003040

TWO OCEAN INN
716-718 SOUTH STEET

THESE DRAWINGS MAY
NOT BE REPRODUCED
WITHOUT WRITTEN
AUTHORIZATION BY
WILLIAM P. HORN

SEAL

DATE
3-21-14 DRC
5-12-14 PL. BD.
8-25-14 HARC

REVISIONS

DRAWN BY
OE

PROJECT
NUMBER
1324

TWO OCEAN INN
716-718 SOUTH STEET
KEY WEST, FL

