

#84



#89

#92A

#91

#88

#87

07/30/2018



#91



07/30/2018

#91



#1

#91

#92B

Corner of Bertha
and Venetia Streets

07/30/2018



#93

#94

Venetia Street

07/30/2018



07/30/2018

#93



#93



#95





#98

07/30/2018





Venetia Street





#121, #122, #123

#120

07/30/2018



#112, #113, #114, #115, #116, #117

#119

07/30/2018



If all the trees requested for removal are approved, a total of 133.6 caliper inches of replacement trees are required to be planted on the property and incorporated into the landscape plan. Also, an old tree removal permit exists on the property. T14-7203 authorized the removal of (1) Royal Poinciana tree with the required replacement of 23 caliper inches to be planted on-site/incorporated into the landscape plan of the approved development plan at that time. Therefore, a total of 156.6 caliper inches is required to be planted and incorporated into the landscape plan.

The landscape plan consists of a majority of native species or species that do well in the Key West area. The plan does rely on too many Sabal Palms as their palm species. It is recommended that other palms species be included.

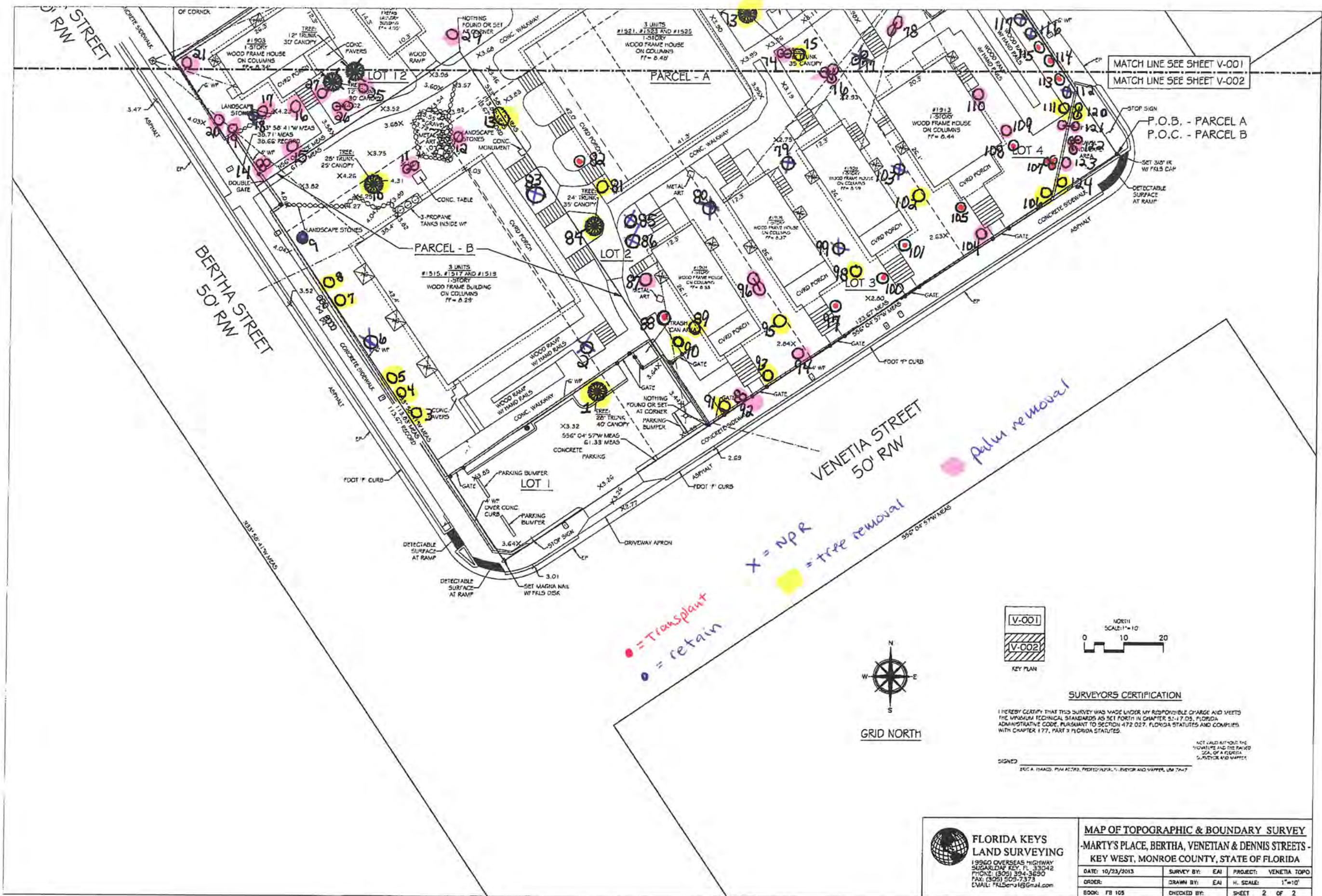
Tree #	Common Name/Scientific Name	DBH/Height	Condition	Location	Species	Value	Required Replacements	Status	Condition	Request
1	Black Olive/Bucida buceras	24.25" - 24" = 0.25" dbh	50%	80%	0%	43%	0.1" dbh	Regulated	Codominant	Remove
2	Chinese Fan Palm/Livistona chinensis	4 ft tall					NA	NPR	Poor	Remove
3	Bridalveil/Caesalpinia grandillo	4" dbh	30%	80%	50%	53%	2.1" dbh	Regulated	Poor, partially uprooted	Remove
4	Pigeon Plum/Coccoloba diversifolia	2.75" dbh	30%	80%	100%	70%	1.9" dbh	Protected	Poor, partially uprooted, thin canopy, 45'angle lean	Remove
5	Paradise/Simaruba glauca	6" dbh	30%	80%	100%	70%	4.2" dbh	Protected	Poor, thinning canopy, circling roots, one sided, tip dieback	Remove
6	Fishtail Palm/Caryota mitis	NA					NA	NPR		Remove
7	Paradise/Simaruba glauca	6.5" dbh	30%	80%	100%	70%	4.5" dbh	Protected	Tip and branch dieback, lead and canopy top dead	Remove
8	Bridalveil/Caesalpinia grandillo	6.5" dbh	40%	80%	50%	56%	3.6" dbh	Regulated	Poor, codominant with included bark	Remove
9	Frangipani 'Key West'/Plumeria	4.5" dbh	NA	NA	NA	NA	NA	Regulated	fair- Good	Retain
10	Gumbo Limbo/Bursea simaruba	16.5" dbh	50%	80%	100%	76%	12.5" dbh	Protected	Low branching codominant with included bark	Remove
11	Coconut (2)/Cocos nucifera	18'-20' tall					1-Palm	Protected		Remove
12	Coconut/Cocos nucifera	23'-25' tall					1-Palm	Protected		Remove
13	Ficus 'Strangler' Fig/Ficus aurea	2" dbh	60%	80%	100%	80%	1.6" dbh	Protected	young tree shape	Remove
14	Christmas Palm (3)/Adonidia merrillii	8'-9' tall					NA	NPR		Remove
15	Washington Palm/Washingtonia robusta	25'-30' tall					1-Palm	Regulated		Remove
16	Christmas Palm/Adonidia merrillii	18'-20' tall					1-Palm	Regulated		Remove
17	Christmas Palm/Adonidia merrillii	12'-15' tall					1-Palm	Regulated		Remove
18	Weeping Fig/ Ficus benjamina	NA					NA	NPR		Remove
19	Christmas Palm/Adonidia merrillii	10'-12' tall					1-Palm	Regulated		Remove
20	Christmas Palm/Adonidia merrillii	10'-12' tall					1-Palm	Regulated		Remove
21	Christmas Palm/Adonidia merrillii	10'-12' tall					1-Palm	Regulated		Remove
22	Christmas Palm (2)/Adonidia merrillii	18'-25' tall					1-Palm	Regulated		Remove
23	Christmas Palm/Adonidia merrillii	10'-13' tall					1-Palm	Regulated		Remove

24	Ficus/Ficus aurea	4.5-5' dbh	NA	NA	NA	NA	NA	Protected	Fair, storm and utility pruning damage	Retain
25	Christmas Palm/Adonidia merrillii	18'-20' tall					1-Palm	Regulated		Remove
26	Christmas Palm (2)/Adonidia merrillii	18'-20' tall					1-Palm	Regulated		Remove
27	Christmas Palm/Adonidia merrillii	18'-20' tall					1-Palm	Regulated		Remove
28	Spanish Stopper/Eugenia foetida	1" dbh	60%	80%	100%	80%	0.8" dbh	Protected	Fair	Remove
29	Christmas Palm/Adonidia merrillii	10'-12' tall					1-Palm	Regulated		Remove
30	Christmas Palm/Adonidia merrillii	18'-20' tall					1-Palm	Regulated		Remove
31	Christmas Palm (4)/Adonidia merrillii	12'-20' tall					1-Palm	Regulated		Remove
32	Ficus 'Shortleaf'/Ficus citrifolia	9.5" dbh			NA		NA	Protected	fair	Transplant
33	Crabwood/Gymnanthes lucida	1.75" dbh	40%	80%	100%	73%	1.2" dbh	Protected	Storm Damage	Remove
34	Spanish Stopper/Eugenia foetida	1" dbh			NA		NA	Protected	Fair	Transplant
35	Crabwood/Gymnanthes lucida	1.5" dbh			NA		NA	Protected	Good	Transplant
36	Coconut Palm/Cocos nucifera	15'-18' tall					1-Palm	Protected		Remove
37	Areca Palm/Dyopsis lutescens	NPR					NA	NPR		Remove
38	Silver buttonwood/Conocarpus erectus sericeus	1.5" dbh	50%	40%	100%	63%	0.9" dbh	Regulated	lollipopped	Remove
39	Silver buttonwood/Conocarpus erectus sericeus	8.75" dbh	50%	40%	100%	63%	5.5" dbh	Regulated	lollipopped	Remove
40	Christmas Palm (5)/Adonidia merrillii	8'-20' tall					1-Palm	Regulated		Remove
41	Christmas Palm (3)/Adonidia merrillii	6'-18' tall					1-Palm	Regulated		Remove
42	Areca Palm/Dyopsis lutescens	NA					NA	NPR		Remove
43	Alexander Palm/Ptychosperma elegans	18'-20' tall					1-Palm	Regulated		Remove
44	Christmas Palm (2)/Adonidia merrillii	15'-18' tall					1-Palm	Regulated		Remove
45	Christmas Palm (3)/Adonidia merrillii	10'-18' tall					1-Palm	Regulated		Remove
46	Christmas Palm (2)/Adonidia merrillii	16'-20' tall					1-Palm	Regulated		Remove
47	Christmas Palm (3)/Adonidia merrillii	16'-20' tall					1-Palm	Regulated		Remove
48	Ficus 'Strangler' shrub/Ficus aurea	NA					NA	NPR	Poor, maintained as tall hedge/shrub	Remove
49	Areca Palm/Dyopsis lutescens	NA					NA	NPR		Remove
50	Ficus 'Strangler' shrub/Ficus aurea	NA					NA	NPR	Poor, maintained as tall hedge/shrub	Remove
51	Christmas Palm/Adonidia merrillii	10'-12' tall					1-Palm	Regulated		Remove
52	Areca Palm/Dyopsis lutescens	NA					NA	NPR		Remove
53	Christmas Palm/Adonidia merrillii	15'-18' tall					1-Palm	Regulated		Remove
54	Areca Palm/Dyopsis lutescens	NA					NA	NPR		Remove
55	Christmas Palm/Adonidia merrillii	15'-18' tall					1-Palm	Regulated		Remove
56	Gumbo Limbo/Bursea simaruba	10.25" dbh	60%	80%	100%	80%	8.2" dbh	Protected		Remove

									Fair, some dieback, multi trunked with trunk	
57	Barbados Cherry/Malpighia glabra	7.5" dbh	60%	80%	50%	63%	4.7" dbh	Regulated	damage	Remove
58	Christmas Palm/Adonidia merrillii	NA					NA	NPR		Remove
59	Blue Latania/Latania loddigesii	NA					NA	NPR	Good	Transplant
60	Areca Palm/Dyopsis lutescens	NA					NA	NPR		Remove
61	Christmas Palm/Adonidia merrillii	15'-18' tall					1-Palm	Regulated		Remove
62	Coconut Palm/Cocos nucifera	15'-18' tall					1-Palm	Protected		Remove
63	Areca Palm/Dyopsis lutescens	NA					NA	NPR		Remove
64	Locustberry/Byrsonima lucida	2.5" dbh			NA		NA	Protected	Fair	Transplant
65	Spicewood/Calyptrocalyx pallens	4" dbh			NA		NA	Protected	Fair	Transplant
66	Verawood/Bulnesia arborea	3" dbh			NA		NA	NPR	Fair	Transplant
67	Jamaica Caper/Capparis cynophallophora	2' tall					NA	NPR		Remove
68	Coconut Palm/Cocos nucifera	20' tall					1-Palm	Regulated		Remove
69	Chinese Fan Palm (3)/Livistona chinensis	NA					NA	Protected		Remove
70	Areca Palm/Dyopsis lutescens	NA					NA	NPR		Remove
71	Christmas Palm (3)/Adonidia merrillii	18'-25' tall					1-Palm	Regulated	Outside fence	Remove
72	Christmas Palm/Adonidia merrillii	NA					NA	NPR		Remove
									Poor, large west codominant removed with wound wood closure and decay evident, included bark evident east side of tree, canopy storm damaged	
73	Poinciana/Delonix regia	14.75" dbh	60%	70%	100%	76%	11.2" dbh	Protected		Remove
74	Christmas Palm (2)/Adonidia merrillii	15'-20' dbh					1-Palm	Regulated		Remove
75	Gumbo Limbo/Bursea simaruba	8.5" dbh	50%	70%	100%	73%	6.2" dbh	Protected	Poor	Remove
76	Christmas Palm (3)/Adonidia merrillii	12'- 15' dbh					1-Palm	Regulated		Remove
77	Areca Palm/Dyopsis lutescens	NA					NA	NPR		Remove
78	Christmas Palm (2)/Adonidia merrillii	10'-12' tall					1-Palm	Regulated		Remove
79	Areca Palm/Dyopsis lutescens	NA					NA	NPR		Remove
80	Triangle Palm/Dyopsis decaryi	NA					NA	NPR		Remove
81	Orange Geiger/Cordia sebestena	1" dbh	40%	70%	100%	70%	0.7" dbh	Protected	Re-sprout, poor	Remove
82	Spanish Stopper/Eugenia foetida	3" dbh			NA		NA	Protected	Good	transplant

83	Areca Palm/Dyopsis lutescens	NA					NA	NPR		Remove
84	Gumbo Limbo/Bursea simaruba	20.75"	60%	80%	100%	80%	16.6" dbh	Protected	Fair, codominant, some included bark	Remove
85	Areca Palm/Dyopsis lutescens	NA					NA	NPR		Remove
86	Areca Palm/Dyopsis lutescens	NA					NA	NPR		Remove
87	Coconut Palm/Cocos nucifera	18'-20' tall					1-Palm	Protected		Remove
88	Green Thatch Palm/Thrinax radiata	5.5' all over height			NA		NA	Protected	Good	Transplant
89	Silver buttonwood/Conocarpus erectus sericeus	5"	40%	60%	100%	66%	3.3" dbh	Protected	lollipopped	Remove
90	Bay Cedar/Suriana maritima	1"	50%	80%	100%	76%	0.7" dbh	Protected	Topped	Remove
91	Green Buttonwood/Conocarpus erectus	5.75"	40%	80%	100%	73%	6.4" dbh	Protected	Poor, Heavy Canopy one-sided, leaning west 45' angle	Remove
92A	Christmas Palm/Adonidia merrillii	9' tall					NA	NPR		Remove
92B	Christmas Palm (3)/Adonidia merrillii	3'-10' tall					1-Palm	Regulated		Remove
93	Yellow Tab-Silver Trumpet/Tabebuia caraiba	12.5"	40%	80%	50%	56%	7" dbh	Regulated	Poor, main trunk dog-leg west 45' angle, tip dieback	Remove
94	Christmas Palm/Adonidia merrillii	8'-10' tall					NA	Regulated		Remove
95	Gumbo Limbo/Bursea simaruba	12" dbh	40%	70%	100%	70%	8.4" dbh	Protected	Poor, 4 multi-trunk total 12", Codominant at 1' above grade	Remove
96	Coconut Palm (2)/Cocos nucifera	20'-25' tall					1-Palm	Protected		Remove
97	Thrinax morrisii/Leucothrinax morrisii	6' tall			NA		NA	Protected	Good	Transplant
98	Frangipani/Plumeria	4" dbh	40%	80%	50%	56%	2.2" dbh	Regulated	Poor, leaning west 45' angle	Remove
99	White Bird of Paradise/Strelitzia nicolai	NA					NA	NPR		Remove
100	Green Thatch/Thrinax radiata	8' tall			NA		NA	Protected	Good	Transplant
101	Thrinax morrisii/Leucothrinax morrisii	6' tall			NA		NA	Protected	Good	Transplant
102	Gumbo Limbo/Bursea simaruba	12.5" dbh	60%	70%	100%	76%	9.5" dbh	Protected	Fair, included bark, over-lifted, limbs pruned away from structures	Remove
103	White Bird of Paradise/Strelitzia nicolai	NA					NA	NPR		Remove
104	Coconut Palm/Cocos nucifera	25'-30'					1-Palm	Protected		Remove
105	Green Thatch/Thrinax radiata	8' tall			NA		NA	Protected	Good	transplant

106	Yellow Tab.-Silver Trumpet/ <i>Tabebuia caraiba</i>	12.5" dbh	50%	80%	50%	60%	7.5" dbh	Regulated	Poor, Storm damage with decay, very few leaves	Remove
107	<i>Coccolrinax miraguama</i>	3'-6' tall, triple			NA		NA	Protected	Good	Transplant
108	Red Stopper/ <i>Eugenia rhombea</i>	1" dbh			NA		NA	Protected	Fair	Transplant
109	Christmas Palm/ <i>Adonidia merrillii</i>	12'-15' tall					1-Palm	Regulated		Remove
110	Alexander Palm/ <i>Ptychosperma elegans</i>	4'-10' tall					1-Palm	Regulated		Remove
111	Fiddlewood/ <i>Citharexylum spinosum</i>	3.75" dbh	10%	60%	100%	56%	2.1" dbh	Protected	Poor, storm damage, very few leaves, mostly dead	Remove
112	Bahama Tab/ <i>Tabebuia bahamensis</i>	NA					NA	NPR	Poor, tip and branch die-back	Remove
113	Simpson Stopper/ <i>Myrcianthes fragrans</i>	NA					NA	NPR	Fair	Transplant
114	Simpson Stopper/ <i>Myrcianthes fragrans</i>	NA					NA	NPR	Fair	Transplant
115	Simpson Stopper/ <i>Myrcianthes fragrans</i>	NA					NA	NPR	Fair	Transplant
116	Bahama Tab/ <i>Tabebuia bahamensis</i>	NA					NA	NPR	Fair, Tip die-back, one sided	Remove
117	Washington Palm/ <i>Washingtonia robusta</i>	NA					NA	Regulated		Remove
118	Simpson Stopper/ <i>Myrcianthes fragrans</i>	NA					NA	NPR	Poor, topped tip die-back, major mechanical damage	Remove
119	Bahama Tab/ <i>Tabebuia bahamensis</i>	NA					NA	NPR		Remove
120	Black Bead (2)/ <i>Pithecellobium keyense</i>	NA					NA	Protected	Poor, hedge	Remove
121	Washington Palm (2)/ <i>Washingtonia robusta</i>	15' tall					1-Palm	Regulated	Poor, multiple stem, 12'-15' wood	Remove
122	Washington Palm (3)/ <i>Washingtonia</i>	2'-18' tall					1-Palm	Regulated		Remove
123	Washington Palm/ <i>Washingtonia robusta</i>	10'-13' tall					1-Palm	Regulated		Remove
124	Black Bead/ <i>Pithecellobium keyense</i>	NA					NA	Protected	Hedged	Remove



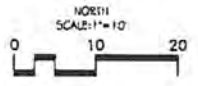
MATCH LINE SEE SHEET V-001
 MATCH LINE SEE SHEET V-002

P.O.B. - PARCEL A
 P.O.C. - PARCEL B

tree removal

X = NPR
● = tree removal

● = transplant
● = retain



SURVEYORS CERTIFICATION

I HEREBY CERTIFY THAT THIS SURVEY WAS MADE UNDER MY RESPONSIBLE CHARGE AND MEETS THE MINIMUM TECHNICAL STANDARDS AS SET FORTH IN CHAPTER 52-17.05, FLORIDA ADMINISTRATIVE CODE, PURSUANT TO SECTION 472.027, FLORIDA STATUTES AND COMPLIES WITH CHAPTER 177, PART 3 FLORIDA STATUTES.

SIGNED: _____
NOT VALID WITHOUT THE SIGNATURE AND THE PAIDED SEAL OF A FLORIDA SURVEYOR AND MAPPER.

FLORIDA KEYS LAND SURVEYING
 19960 OVERSEAS HIGHWAY
 SUGARLOAF KEY, FL 33042
 PHONE: (305) 394-3890
 FAX: (305) 505-7373
 EMAIL: FKLService@gmail.com

MAP OF TOPOGRAPHIC & BOUNDARY SURVEY		
MARTY'S PLACE, BERTHA, VENETIAN & DENNIS STREETS - KEY WEST, MONROE COUNTY, STATE OF FLORIDA		
DATE: 10/23/2013	SURVEY BY: EAI	PROJECT: VENETIA TOPO
ORDER:	DRAWN BY: EAI	H. SCALE: 1"=10'
BOOK: FB 105	CHECKED BY:	SHEET 2 OF 2

