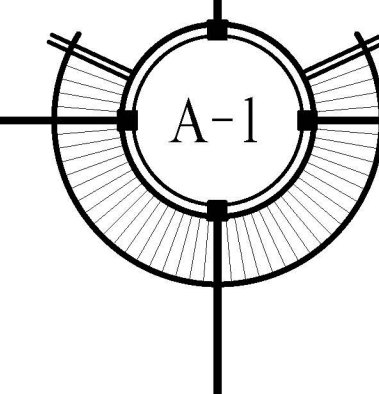


PROPOSED SITE PLAN - ROOF PLAN

SITE PLAN BASED ON INFORMATION OBTAINED FROM SURVEY PREPARED BY FREDERICK H. HILDEBRANDT, SURVEYOR DATED ON 02-27-06
 SCALE: 1" = 30'-0"

WATERFRONT BREWERY
 201 WILLIAM STREET
 KEY WEST BIGHT, FLORIDA



WILLIAM P. HORN
 ARCHITECT, P.A.

915 EATON ST.
 KEY WEST,
 FLORIDA
 33040

TEL (305) 296-8302
 FAX (305) 296-1033

LICENSE NO.
 AA 0003040

WATERFRONT BREWERY
 201 WILLIAM STREET
 KEY WEST BIGHT, FL.

SEAL

THESE DRAWINGS MAY NOT BE REPRODUCED WITHOUT WRITTEN AUTHORIZATION BY WILLIAM P. HORN

DATE

11-11-11 HARC
 12-01-11 DRC

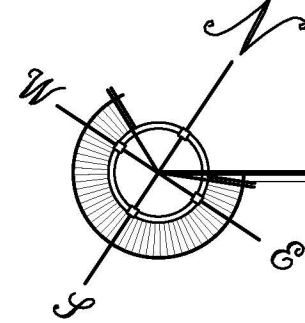
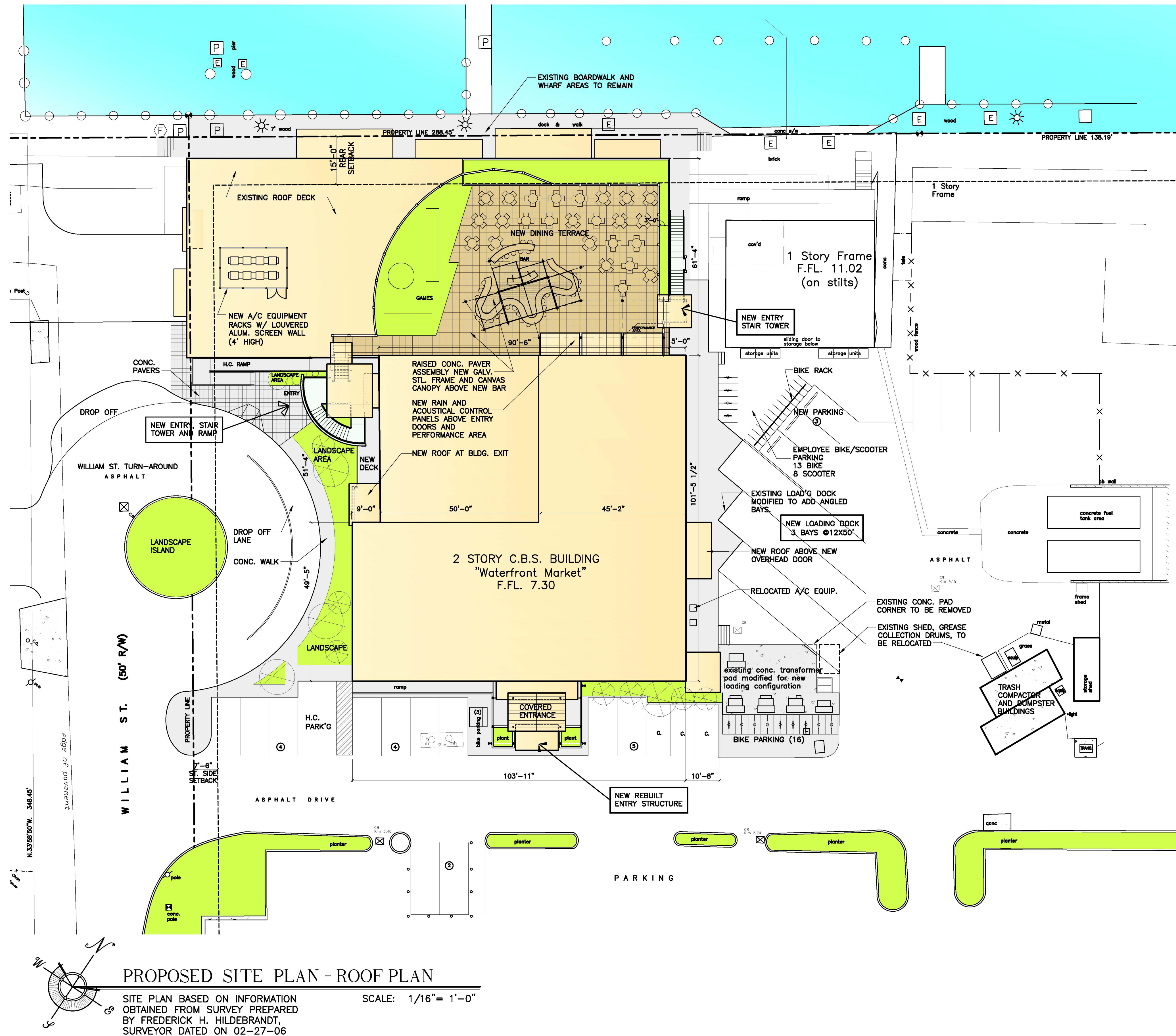
REVISIONS

DRAWN BY

EMA
 FIH

PROJECT NUMBER

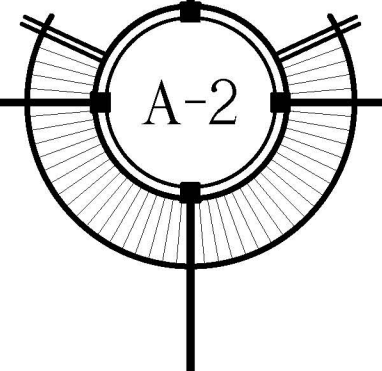
1113



PROPOSED SITE PLAN - ROOF PLAN

SITE PLAN BASED ON INFORMATION OBTAINED FROM SURVEY PREPARED BY FREDERICK H. HILDEBRANDT, SURVEYOR DATED ON 02-27-06
 SCALE: 1/16" = 1'-0"

WATERFRONT BREWERY
 201 WILLIAM STREET
 KEY WEST BIGHT, FLORIDA



WILLIAM P. HORN
 ARCHITECT, P.A.

915 EATON ST.
 KEY WEST,
 FLORIDA
 33040

TEL (305) 296-8302
 FAX (305) 296-1033

LICENSE NO.
 AA 0003040

WATERFRONT BREWERY
 201 WILLIAM STREET
 KEY WEST BIGHT, FL.

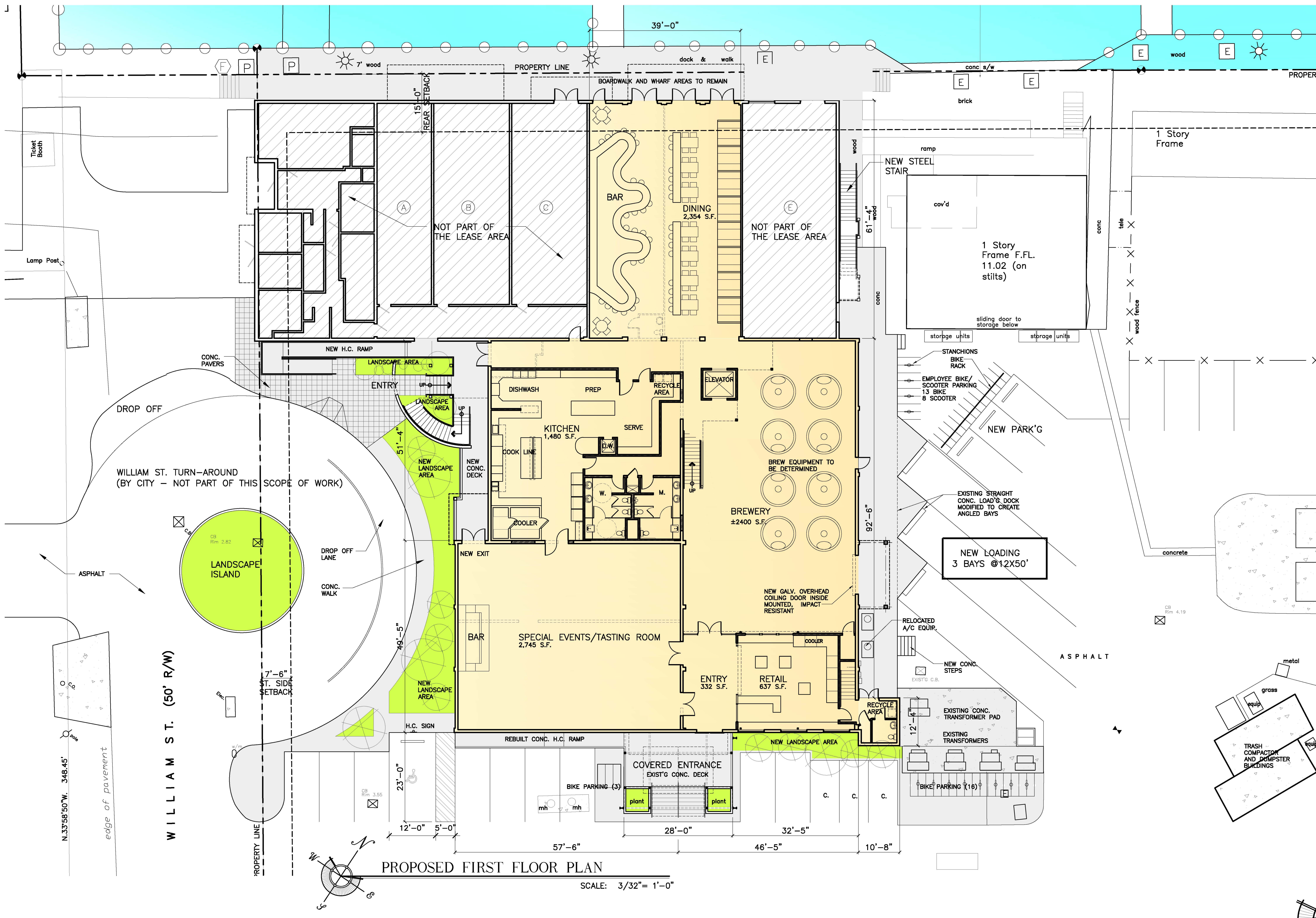
SEAL

THESE DRAWINGS MAY NOT BE REPRODUCED WITHOUT WRITTEN AUTHORIZATION BY WILLIAM P. HORN

DATE
 11-11-11 HARC
 12-01-11 DRC

REVISIONS

DRAWN BY
 EMA
 FIH
 PROJECT NUMBER
 1113



PROPOSED FIRST FLOOR PLAN
SCALE: 3/32" = 1'-0"

WILLIAM P. HORN
ARCHITECT, P.A.

915 EATON ST.
KEY WEST,
FLORIDA
33040

TEL (305) 296-8302
FAX (305) 296-1033

LICENSE NO.
AA 0003040

WATERFRONT BREWERY
201 WILLIAM STREET
KEY WEST BIGHT, FL.

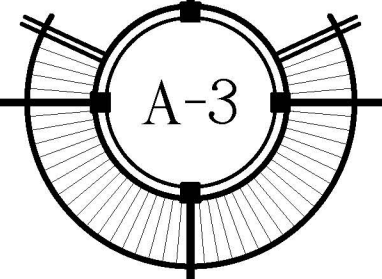
SEAL

THESE DRAWINGS MAY
NOT BE REPRODUCED
WITHOUT WRITTEN
AUTHORIZATION BY
WILLIAM P. HORN

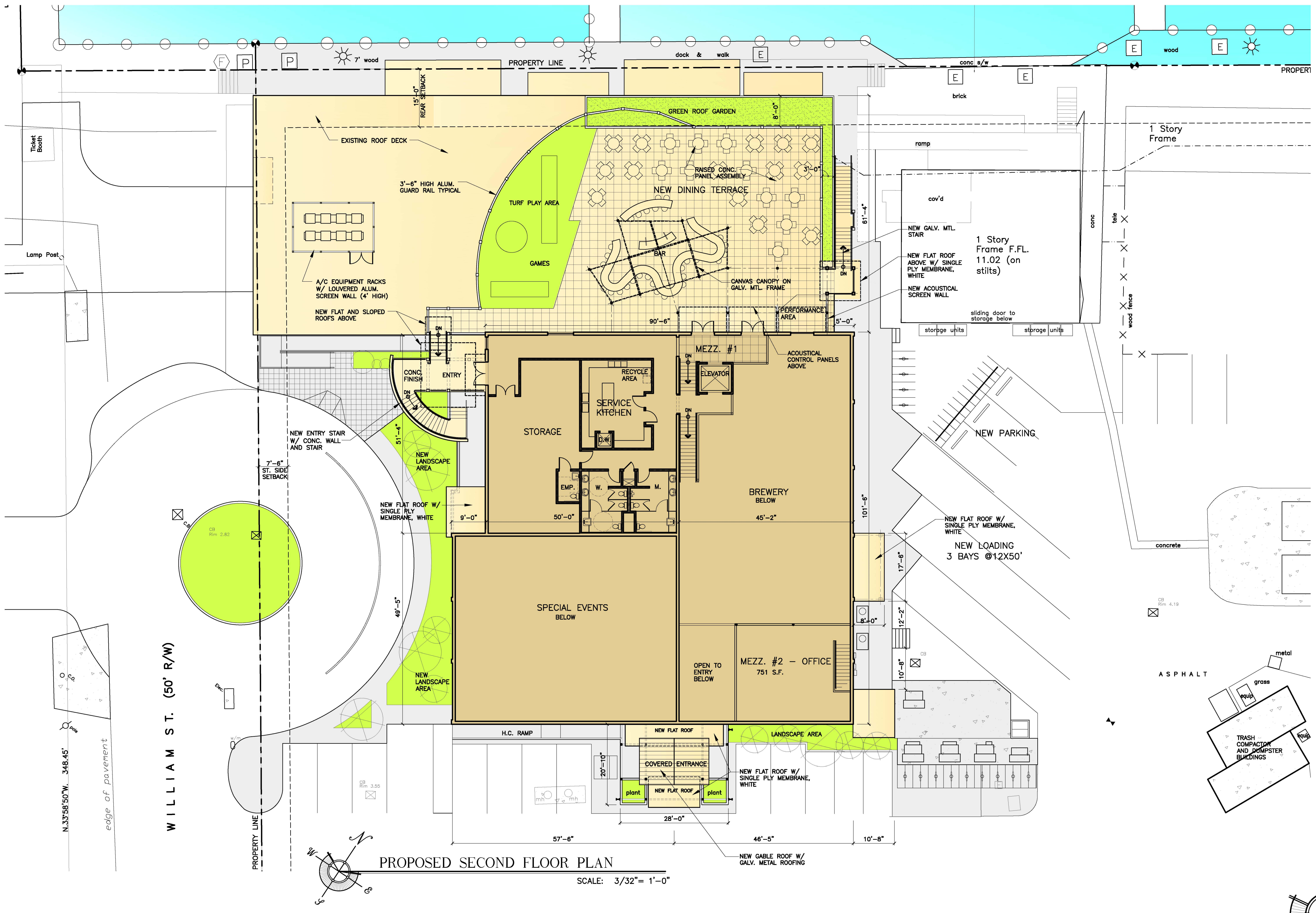
DATE
11-11-11 HARC
12-01-11 DRC

REVISIONS

DRAWN BY
EMA
FIH
PROJECT
NUMBER
1113



WATERFRONT BREWERY
201 WILLIAM STREET
KEY WEST BIGHT, FLORIDA



PROPOSED SECOND FLOOR PLAN
SCALE: 3/32" = 1'-0"

WATERFRONT BREWERY
201 WILLIAM STREET
KEY WEST BIGHT, FLORIDA

WILLIAM P. HORN
ARCHITECT, P.A.

915 EATON ST.
KEY WEST,
FLORIDA
33040

TEL (305) 296-8302
FAX (305) 296-1033

LICENSE NO.
AA 0003040

WATERFRONT BREWERY
201 WILLIAM STREET
KEY WEST BIGHT, FL.

SEAL

THESE DRAWINGS MAY
NOT BE REPRODUCED
WITHOUT WRITTEN
AUTHORIZATION BY
WILLIAM P. HORN

DATE
11-11-11 HARC
12-01-11 DRC

REVISIONS

DRAWN BY
EMA
FIH
PROJECT
NUMBER
1113

