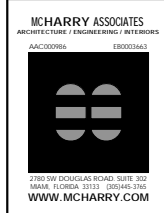
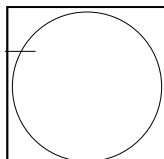


REVISIONS

KEY WEST CITY HALL
AT GLYNN ARCHER
PHASE 2
1300 WHITE STREET - KEY WEST, FLORIDA
CITY OF KEY WEST



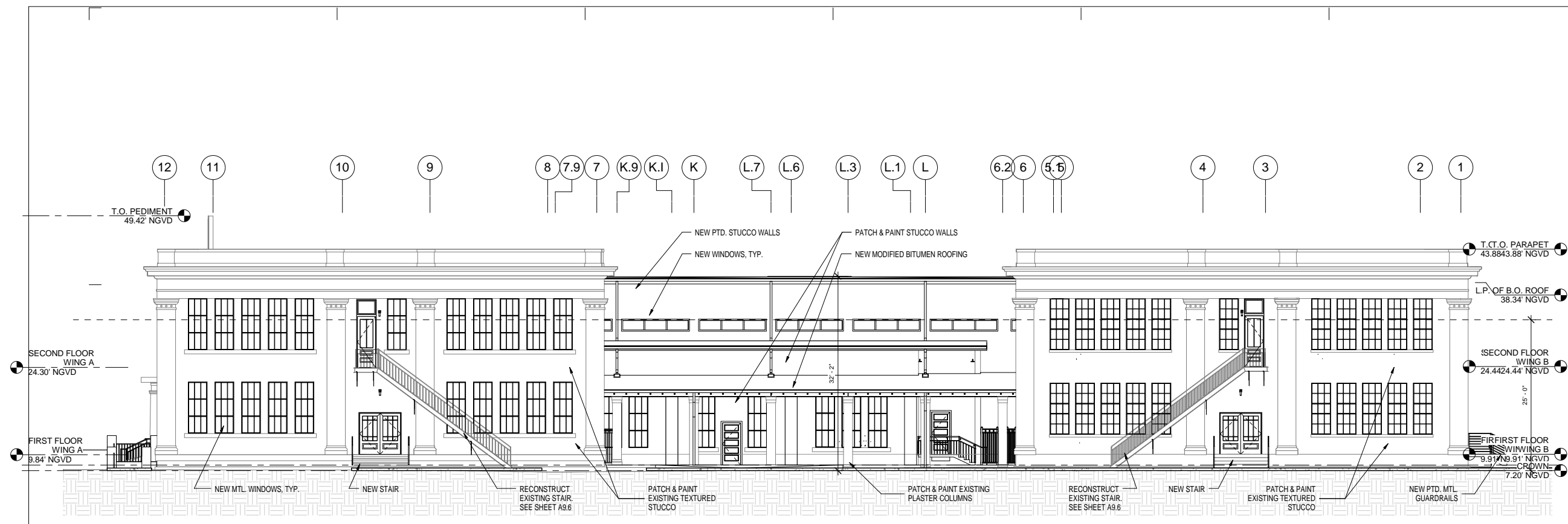
110 Angela Street
Key West, Florida 33040
Telephone (305) 296-1317
Facsimile (305) 296-2727
Florida License 11C002922

Bender & Associates
ARCHITECTS

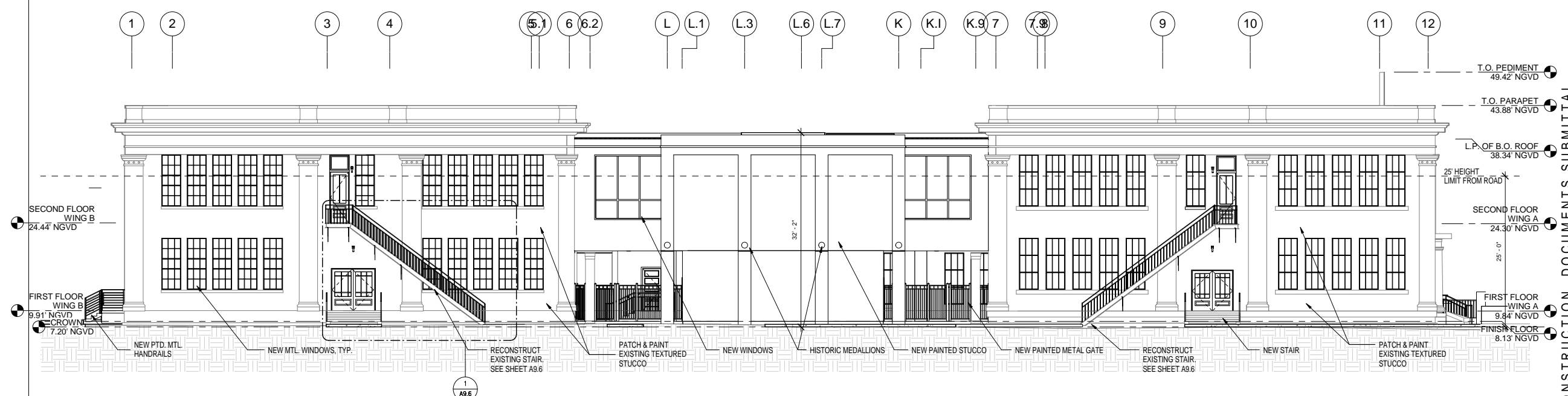
Project No: 1305
BUILDING EXTERIOR ELEVATIONS
Date: 3/3/14

A5.1
OF

90% CONSTRUCTION DOCUMENTS SUBMITTAL



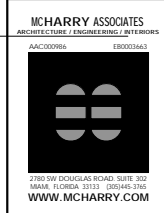
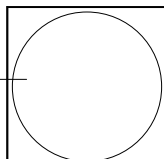
1 North Exterior Elevation
A5.1 1/8" = 1'-0"



2 South Exterior Elevation
A5.1 1/8" = 1'-0"

REVISIONS

KEY WEST CITY HALL
AT GLYNN ARCHER
PHASE 2
1300 WHITE STREET - KEY WEST, FLORIDA
CITY OF KEY WEST



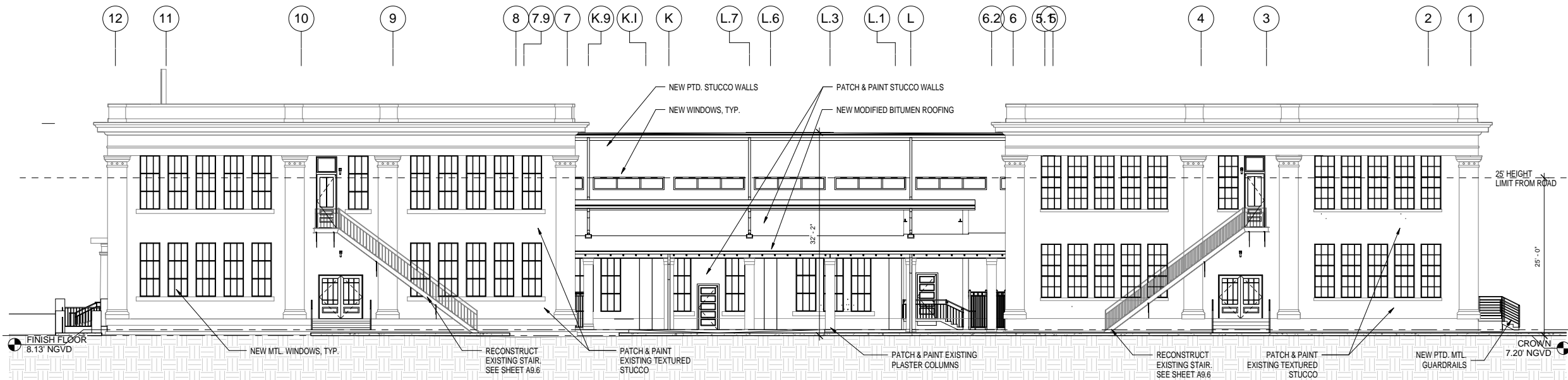
410 Angela Street
Key West, Florida 33040
Telephone (305) 296-1317
Facsimile (305) 296-2727
Florida License AIC0020222

Bender & Associates
ARCHITECTS
p.c.

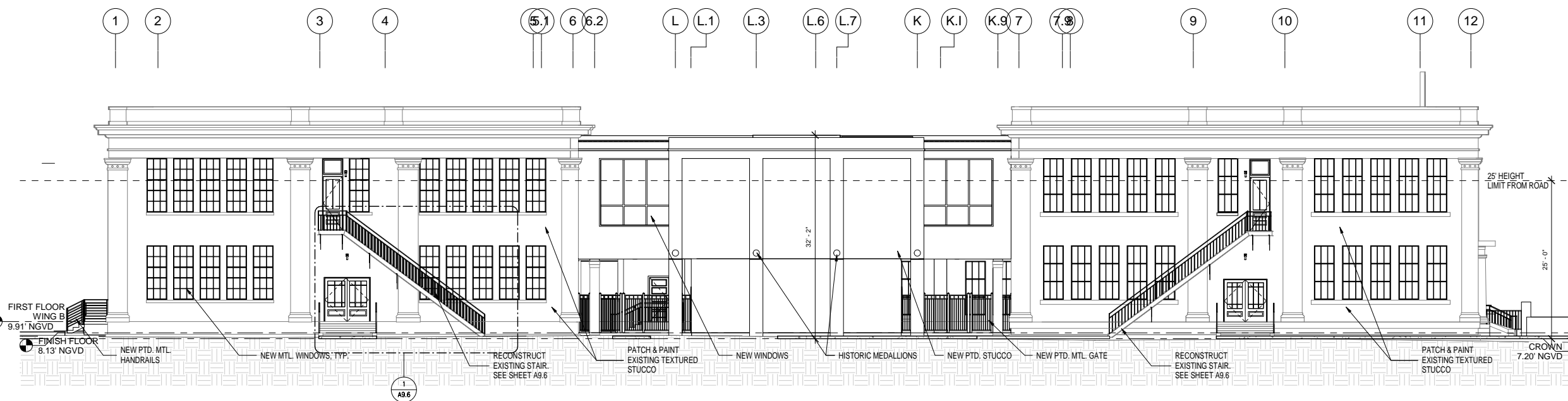
Project No. 1305
BUILDING EXTERIOR ELEVATIONS
Date: 3/3/14

A5.1P
PLANNING
OF

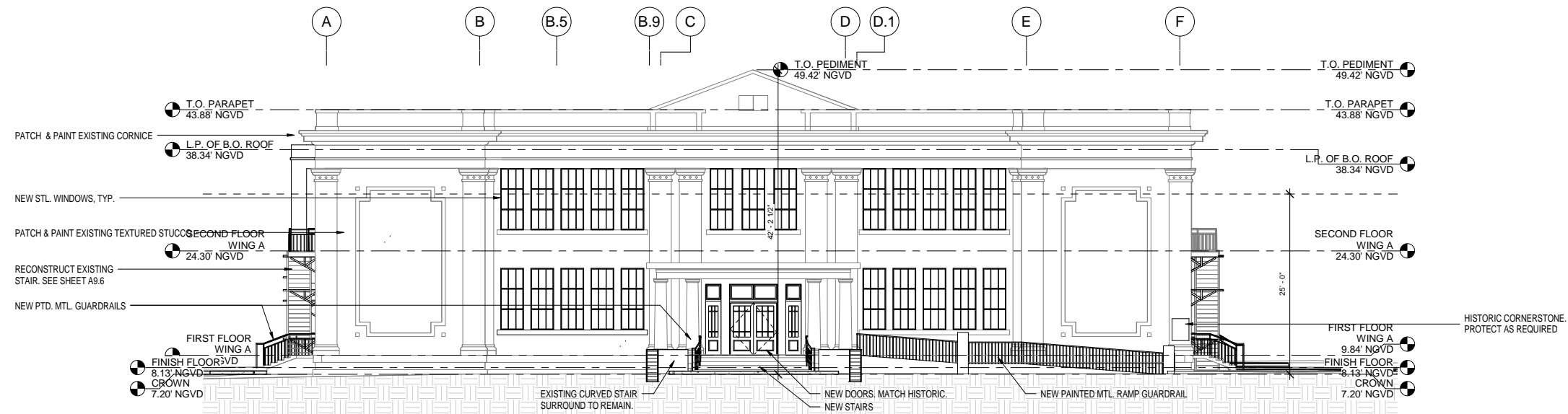
90% CONSTRUCTION DOCUMENTS SUBMITTAL



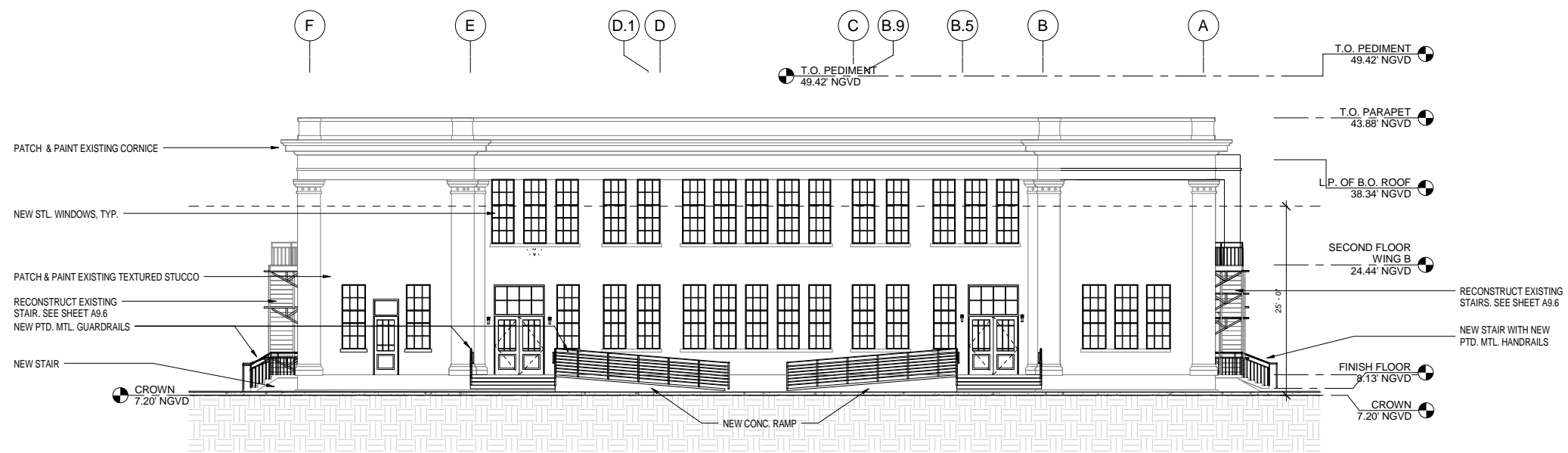
1 Planning - North Exterior Elevation
A5.1P 1/8" = 1'-0"



2 Planning - South Exterior Elevation
A5.1P 1/8" = 1'-0"



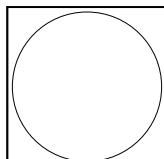
1 East (Front) Exterior Elevation
A5.2
1/8" = 1'-0"



2 West (Rear) Exterior Elevation
A5.2
1/8" = 1'-0"

REVISIONS

KEY WEST CITY HALL
AT GLYNN ARCHER
PHASE 2
1300 WHITE STREET - KEY WEST, FLORIDA
CITY OF KEY WEST



MCHARRY ASSOCIATES
ARCHITECTS ENGINEERS INTERIORS
AAC00096 E000543
250 DR DOUGLASS ROAD, SUITE 202
MIAMI, FLORIDA 33132 PHONE: 305
WWW.MCHARRY.COM

410 Angela Street
Key West, Florida 33040
Telephone (305) 296-1317
Facsimile (305) 296-2727
Florida License AIC002922

Bender & Associates
ARCHITECTS
p.c.

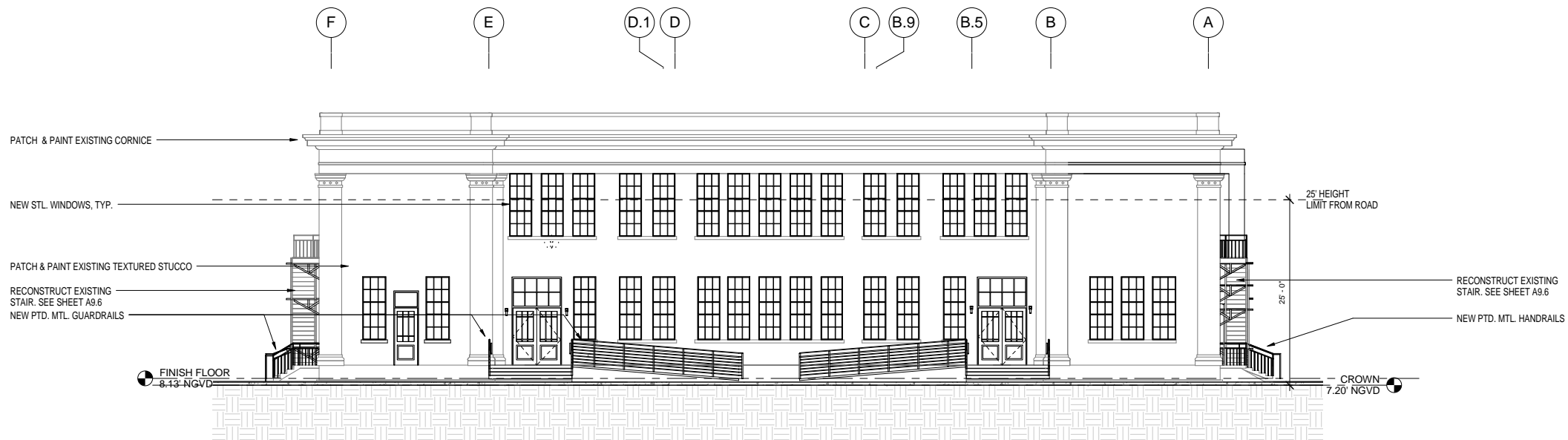
Project No: 1305
BUILDING EXTERIOR ELEVATIONS
Date: 3/3/14

A5.2
OF

90% CONSTRUCTION DOCUMENTS SUBMITTAL



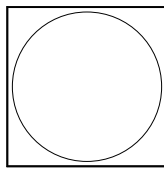
1 Planning - East (Front) Exterior Elevation
A5.2P 1/8" = 1'-0"



2 Planning - West (Rear) Exterior Elevation
A5.2P 1/8" = 1'-0"

REVISIONS

**KEY WEST CITY HALL
AT GLYNN ARCHER**
PHASE 2
1300 WHITE STREET - KEY WEST, FLORIDA
CITY OF KEY WEST



MCHARRY ASSOCIATES
ARCHITECTS ENGINEERS INTERIORS
AAC00096 E0005663
250 DR DOUGLASS ROAD, SUITE 202
MIAMI, FLORIDA 33132 JACOBS 314
WWW.MCHARRY.COM

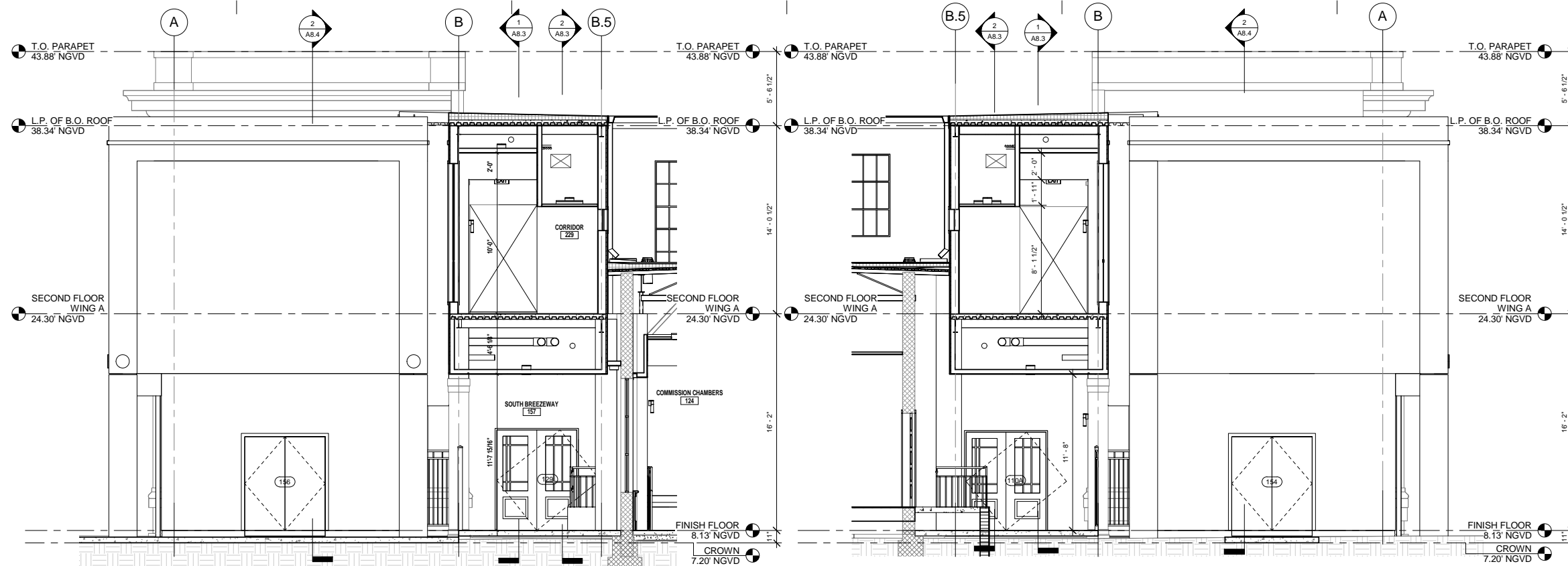
410 Angela Street
Key West, Florida 33040
Telephone (305) 296-1317
Facsimile (305) 296-2727
Florida License: 11C002022

Bender & Associates
ARCHITECTS
p.c.

Project No.	1305
BUILDING EXTERIOR ELEVATIONS	
Date:	3/3/14

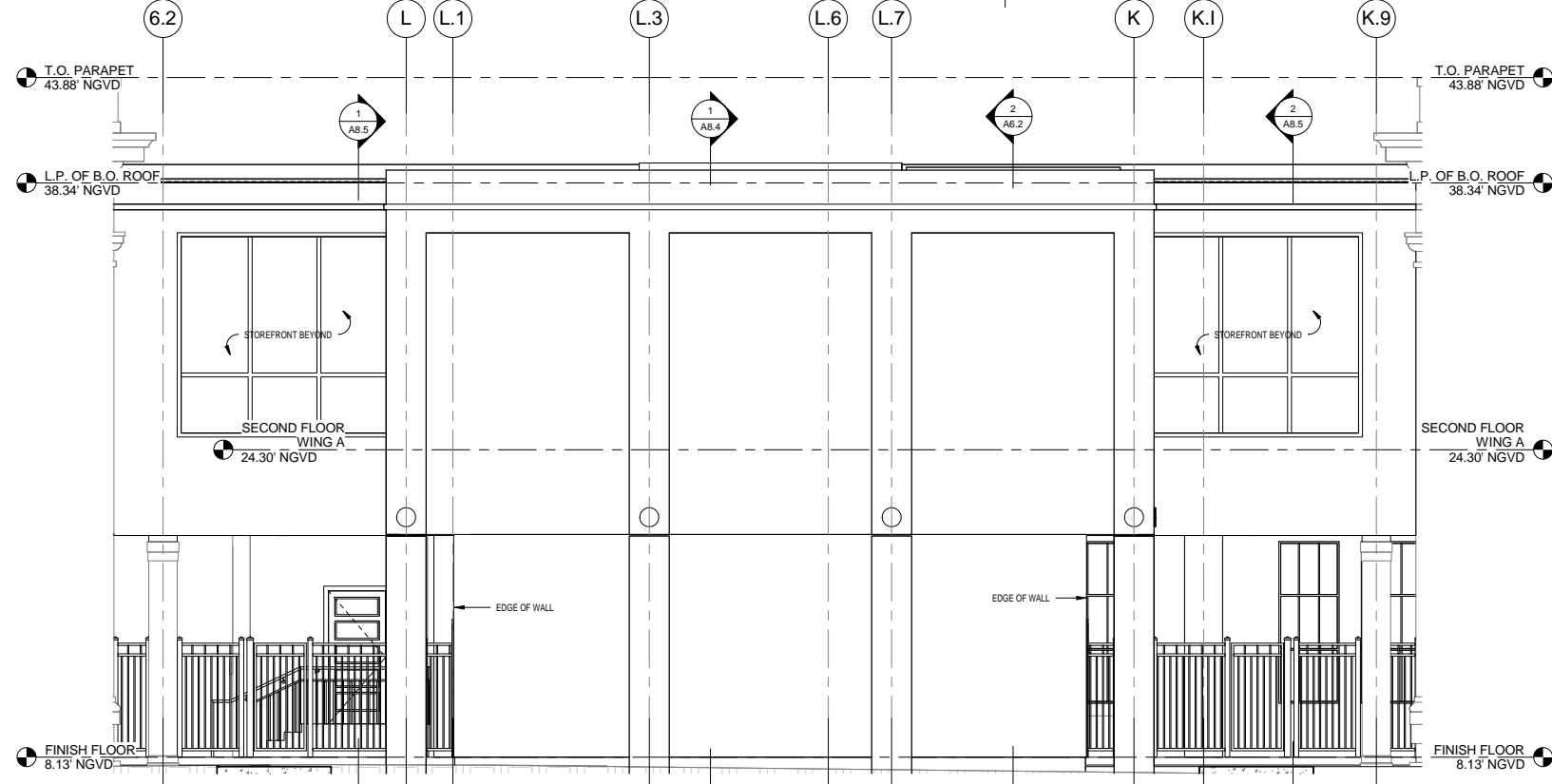
A5.2P
PLANNING
OF

90% CONSTRUCTION DOCUMENTS SUBMITTAL



2 CHILLER EAST ELEVATION
 1/4" = 1'-0"

1 CHILLER WEST ELEVATION
 1/4" = 1'-0"

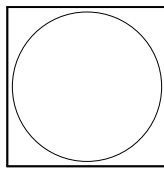


3 CHILLER SOUTH ELEVATION
 1/4" = 1'-0"

REVISIONS

--	--

**KEY WEST CITY HALL
 AT GLYNN ARCHER**
 PHASE 2
 1300 WHITE STREET - KEY WEST, FLORIDA
 CITY OF KEY WEST



MCHARRY ASSOCIATES
 ARCHITECTS ENGINEERS INTERIORS
 2300 DR. DOUGLAS ROAD, SUITE 202
 MIAMI, FLORIDA 33132 (305) 396-3300
 WWW.MCHARRY.COM

410 Angela Street
 Key West, Florida 33340
 Telephone (305) 296-1317
 Facsimile (305) 296-2727
 Florida License A11002022

Bender & Associates
ARCHITECTS
 p.a.

Project No. 1305
 BRIDGE ELEVATIONS
 Date: 3/3/14

A8.5
 OF

90% CONSTRUCTION DOCUMENTS SUBMITTAL