

INDIGENOUS PARK

SITE AERIAL

AUGUST 4, 2015

INDIGENOUS PARK • KEY WEST, FL



INDIGENOUS PARK

SITE INVENTORY & ANALYSIS

AUGUST 4, 2015

INDIGENOUS PARK • KEY WEST, FL



LEGEND

- PROJECT BOUNDARY
- PRIMARY VEHICULAR CIRCULATION
- SECONDARY VEHICULAR CIRCULATION
- SIDEWALK
- MAJOR POINT OF ENTRY
- POTENTIAL PEDESTRIAN CONNECTION
- PROPOSED ROAD REALIGNMENT
- EXISTING SERVICE DRIVE
- CHAIN LINK FENCE
- WATER FLOW
- POINT OF INTEREST

SCALE: 1" = 30'-0"

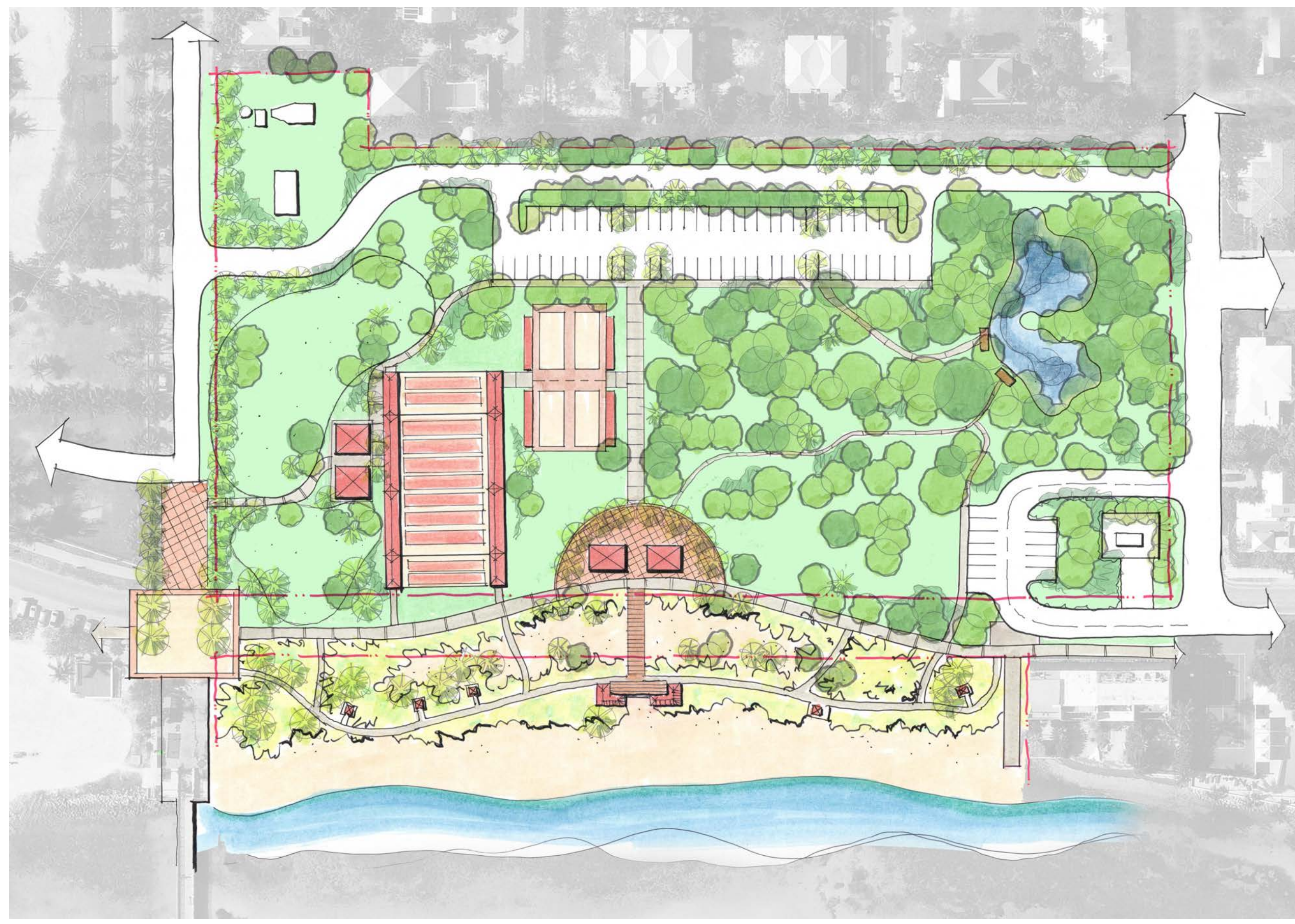
0 15' 30' 60' 120'

INDIGENOUS PARK

CONCEPTUAL DESIGN PROGRESS

AUGUST 4, 2015

INDIGENOUS PARK • KEY WEST, FL



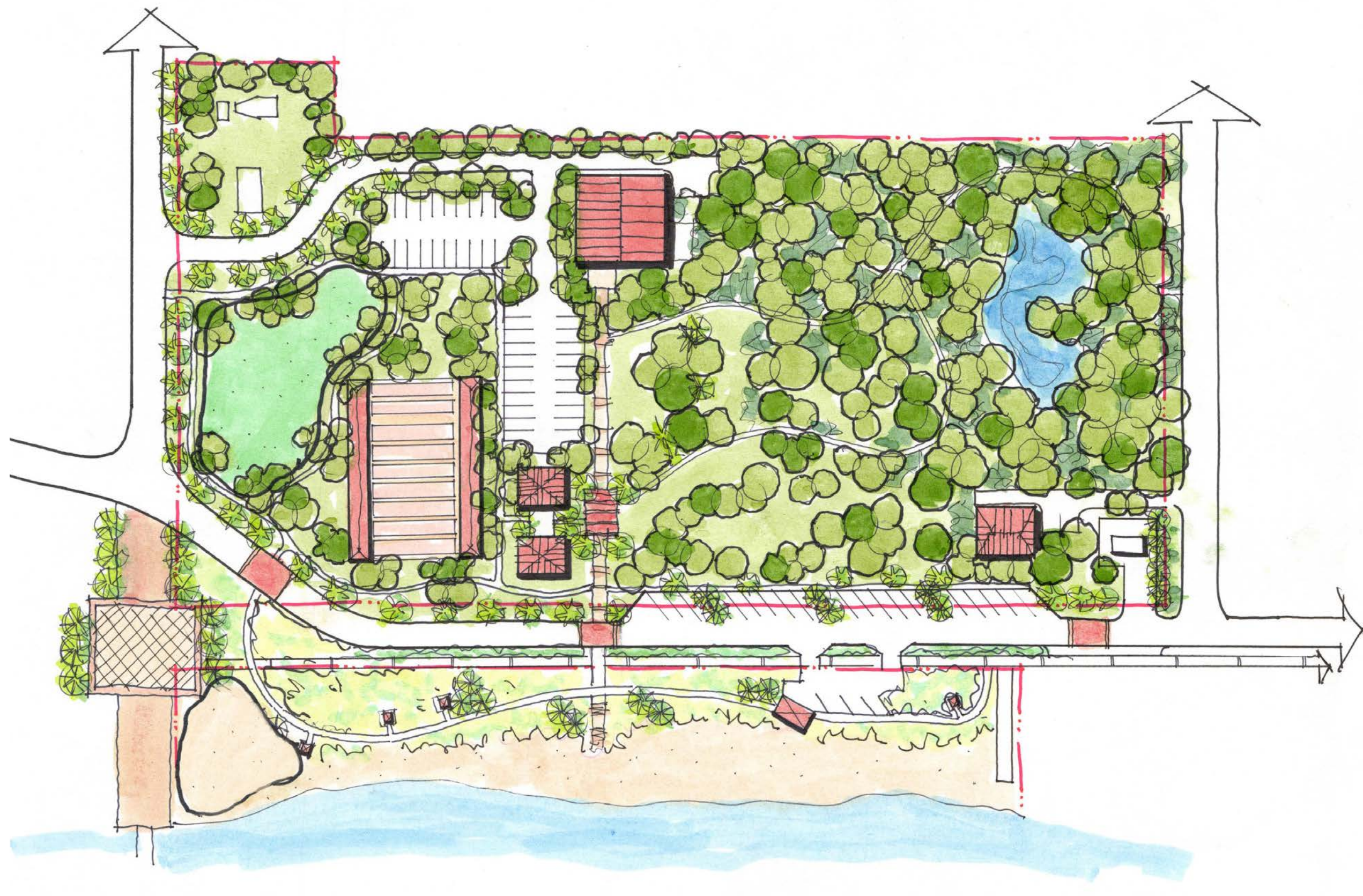
CONCEPT #1
RELOCATE ATLANTIC BLVD.



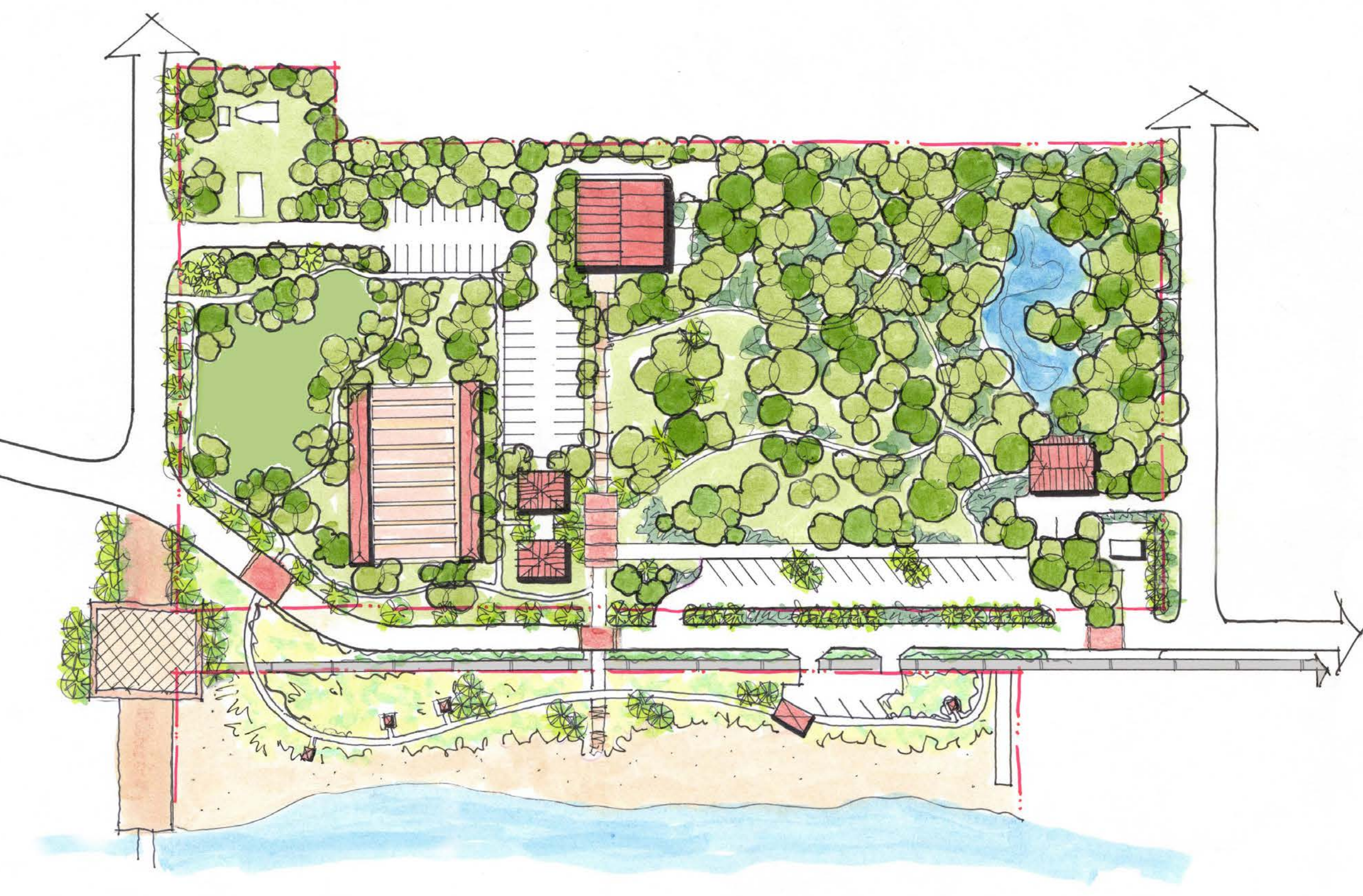
CONCEPT #2
ELIMINATE ATLANTIC BLVD.



CONCEPT #3
ATLANTIC BLVD. IN EXISTING LOCATION



CONCEPT #3a



CONCEPT #4a



CONCEPT #5



INDIGENOUS PARK

FINAL CONCEPTUAL MASTERPLAN - CONCEPT 5a

AUGUST 4, 2015

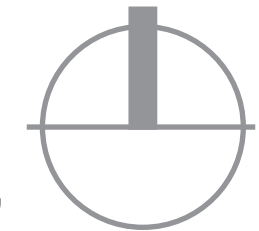
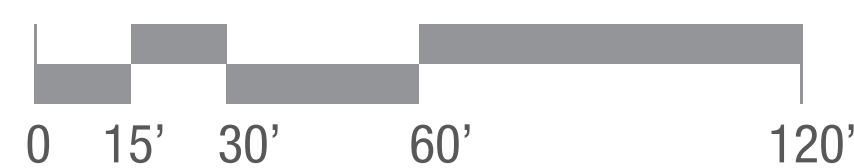
INDIGENOUS PARK • KEY WEST, FL

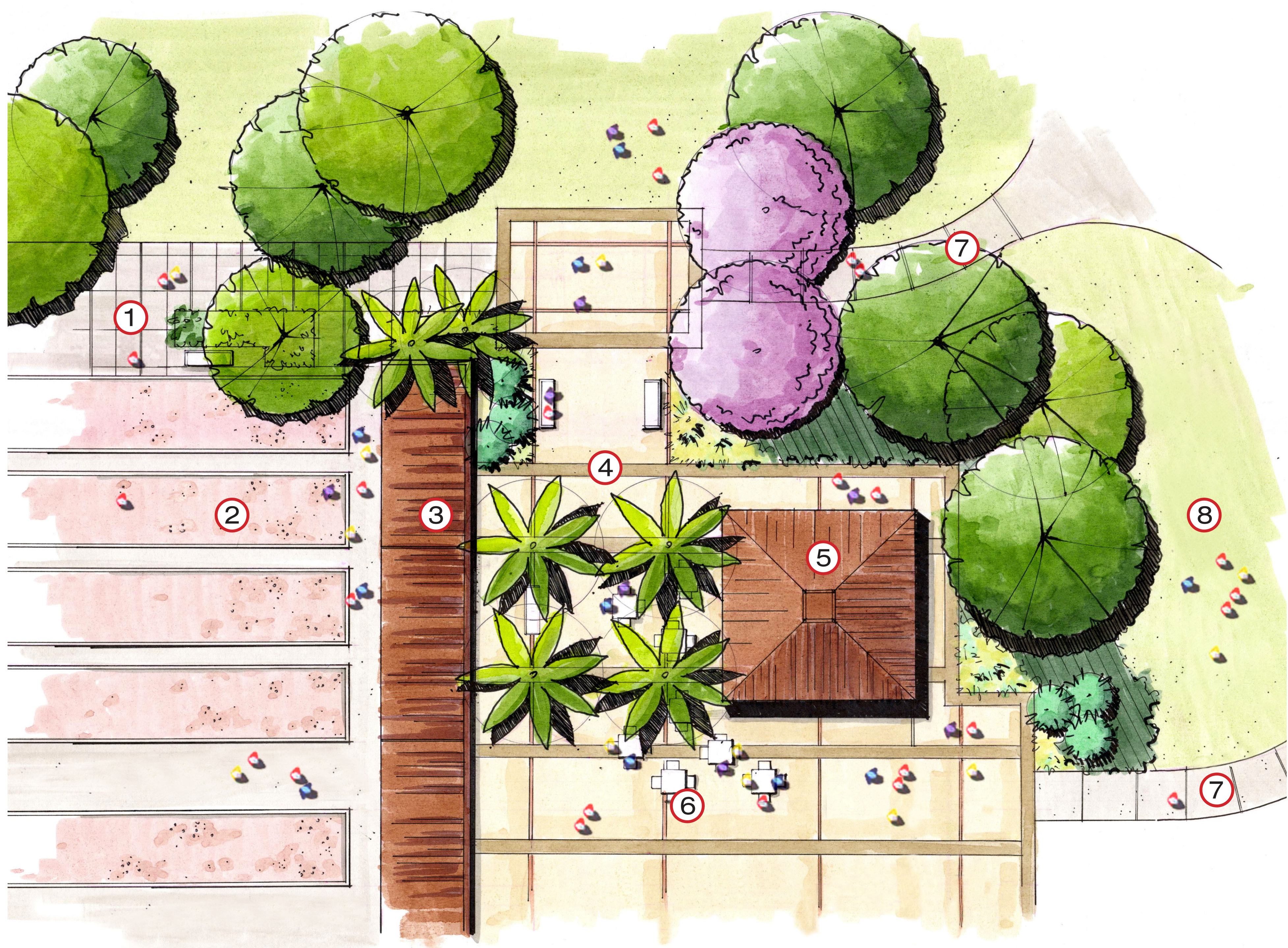


LEGEND

- ① ATLANTIC BLVD. NARROWED AND INCLUDED SPEED TABLES TO SLOW TRAFFIC
- ② KEY WEST WILDLIFE CENTER
- ③ RELOCATED KEY WEST WILDLIFE CENTER/INTERPRETIVE OFFICE
- ④ EXISTING BOCCE BALL COURTS
- ⑤ EXPANSION OF BOCCE BALL COURTS
- ⑥ RESTROOMS
- ⑦ PARK PLAZA AND PAVILION WITH CONCESSIONS
- ⑧ PEDESTRIAN WALKING PATHS
- ⑨ PASSIVE PARK
- ⑩ WETLAND AREA WITH 10' BUFFER
- ⑪ NEIGHBORHOOD PARK ENTRY
- ⑫ PARKING (+/- 37 SPACES)
- ⑬ ANGLED PARKING (+/- 16 SPACES)
- ⑭ EXISTING ADA PARKING
- ⑮ BEACH PAVILION
- ⑯ BIKE/WALKING PATH
- ⑰ SPEED TABLE FOR TRAFFIC CALMING
- ⑱ PEDESTRIAN CROSSWALK
- ⑲ EXISTING UTILITIES
- ⑳ PUMP STATION
- ㉑ BEACH STABILIZATION STRUCTURE PER CITY OF KEY WEST

SCALE: 1" = 30'-0"

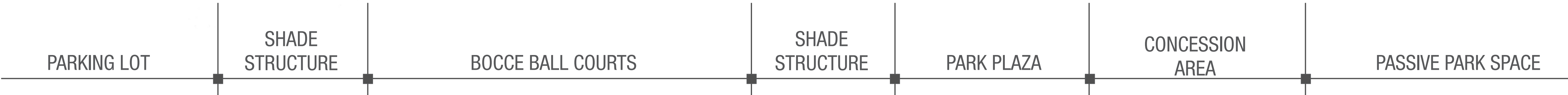
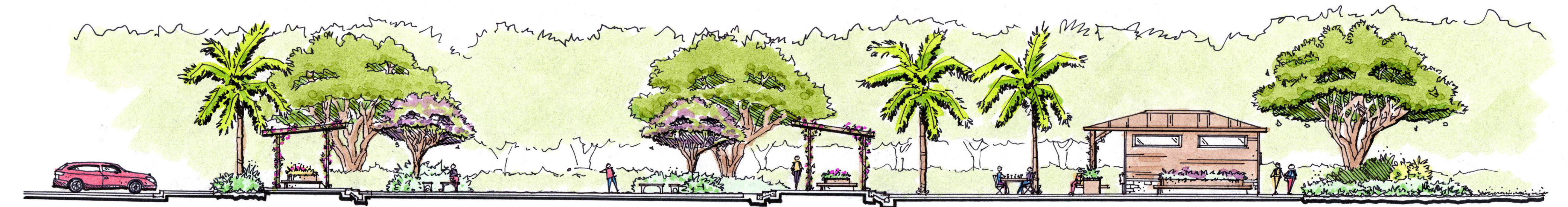




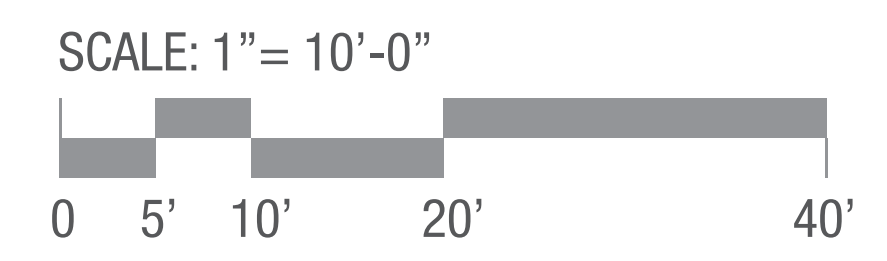
- LEGEND
- ① PARK ENTRANCE
 - ② EXPANSION OF BOCCE BALL COURTS
 - ③ SHADE STRUCTURE FOR BOCCE BALL COURTS
 - ④ PARK PLAZA
 - ⑤ CONCESSIONS
 - ⑥ OUTDOOR SEATING
 - ⑦ PEDESTRIAN WALKING PATHS
 - ⑧ PASSIVE PARK AREA

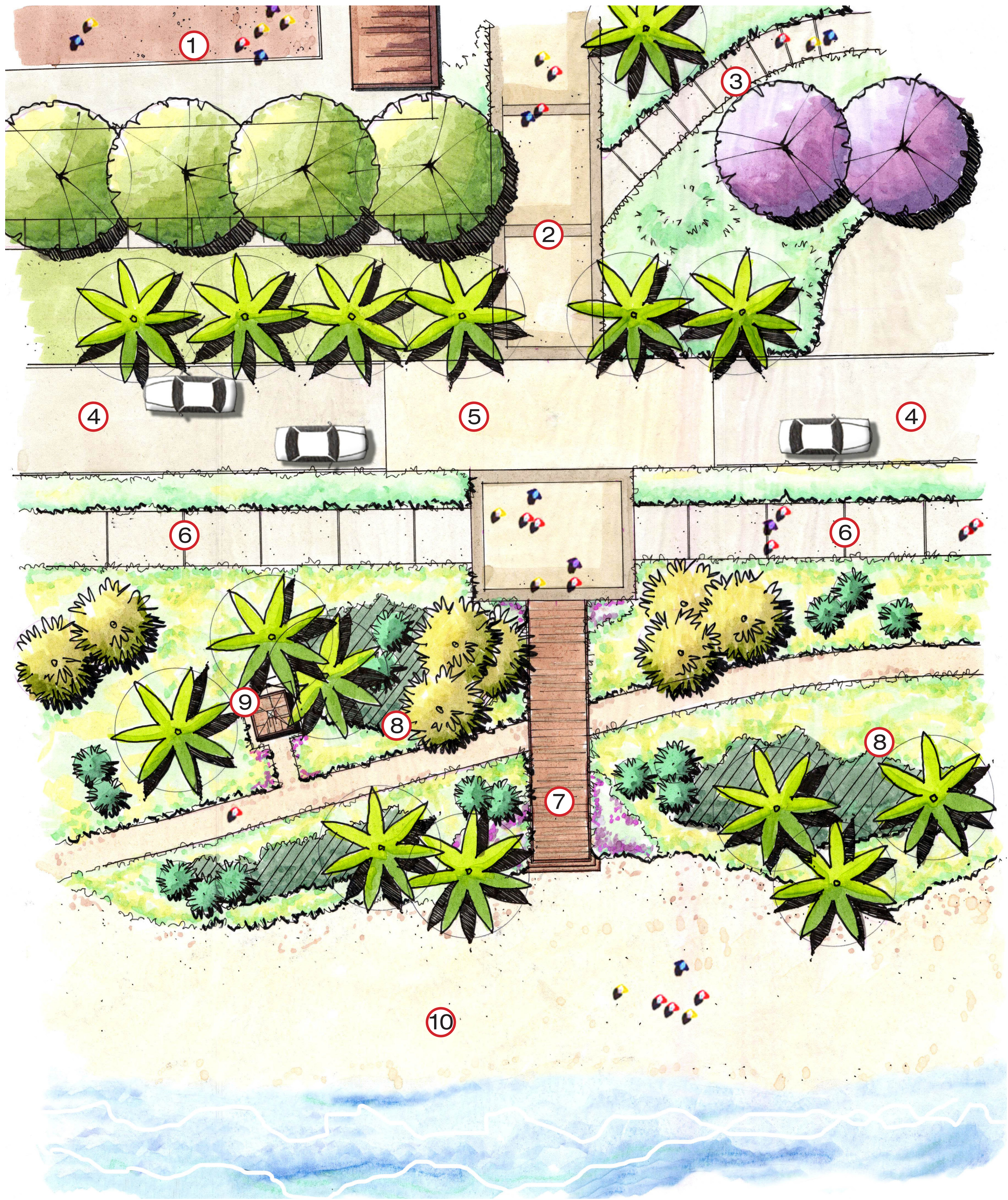


ENLARGEMENT A: BOCCE BALL COURTS AND PARK PLAZA

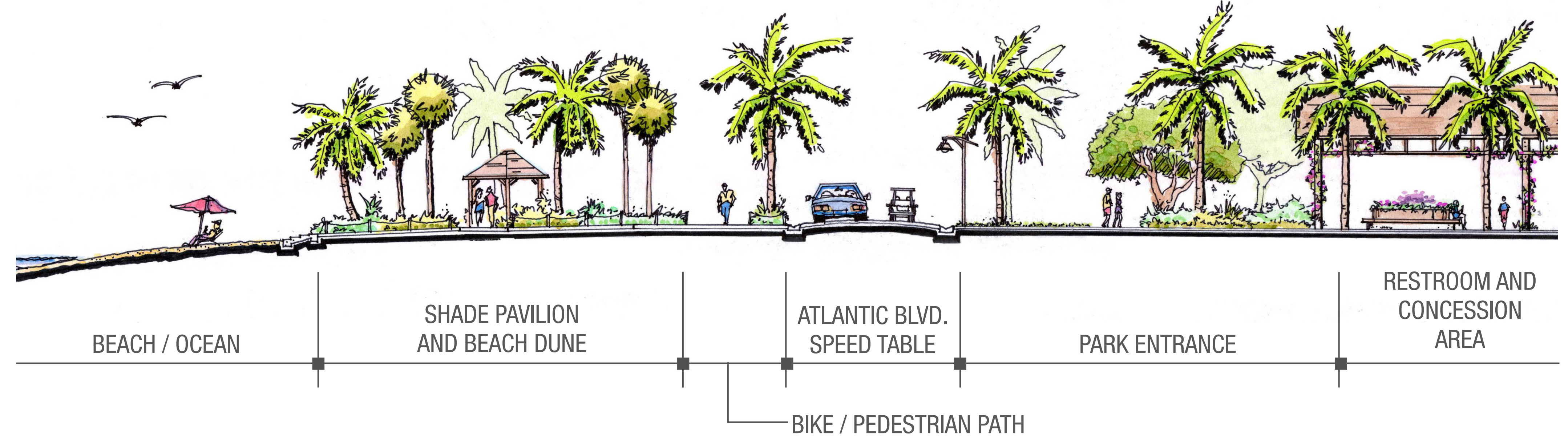


SECTION A-A': BOCCE BALL COURTS AND PARK PLAZA

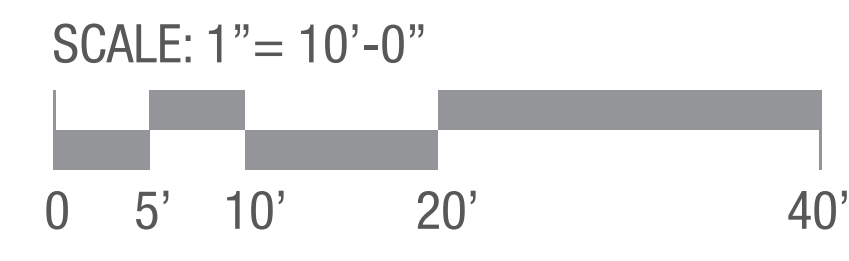




ENLARGEMENT B: BEACH CONNECTION AND SPEED TABLE CONDITION

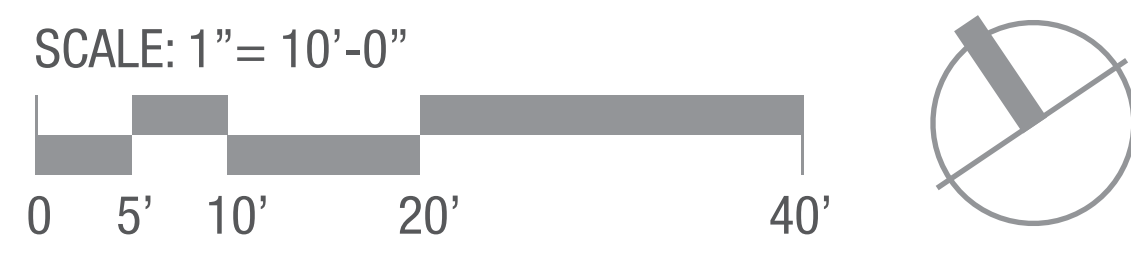


SECTION B-B': BEACH CONNECTION AND SPEED TABLE CONDITION



LEGEND

- ① BOCCE BALL COURTS
- ② PARK ENTRANCE
- ③ PEDESTRIAN WALKING PATH
- ④ ATLANTIC BLVD.
- ⑤ SPEED TABLE CONDITION AS A METHOD FOR TRAFFIC CALMING
- ⑥ BIKE / PEDESTRIAN PATHWAY
- ⑦ BEACH ENTRANCE
- ⑧ ENHANCED DUNE PLANTING
- ⑨ BEACH PAVILION
- ⑩ BEACH AREA



INDIGENOUS PARK

CHARACTER IMAGES

AUGUST 4, 2015

INDIGENOUS PARK • KEY WEST, FL

