

*In Key West, Florida...*

## ISLAND HOUSE IN AN ISLAND SETTING

INTERIOR DESIGN BY WALDO FRANK PEREZ, A.I.D.

CONSULTING ARCHITECT DAN M. STIRRUP

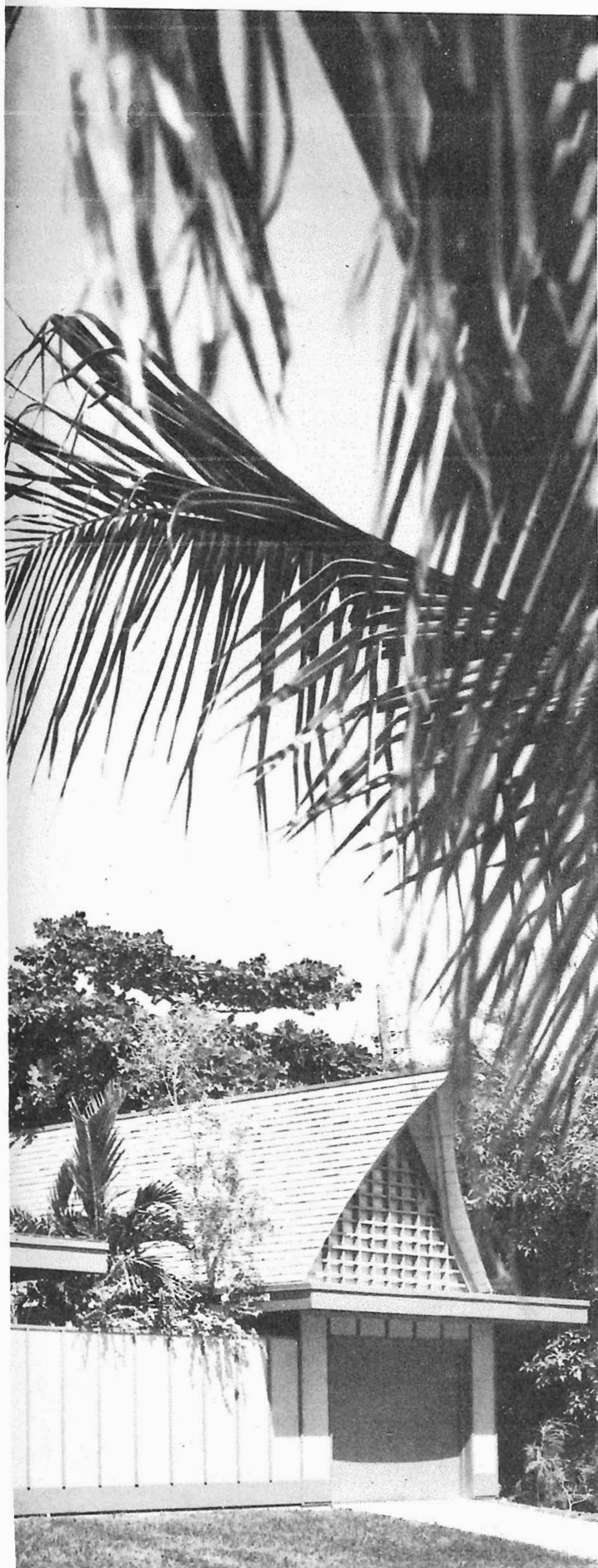
PHOTOGRAPHED BY EZRA STOLLER ASSOCIATES

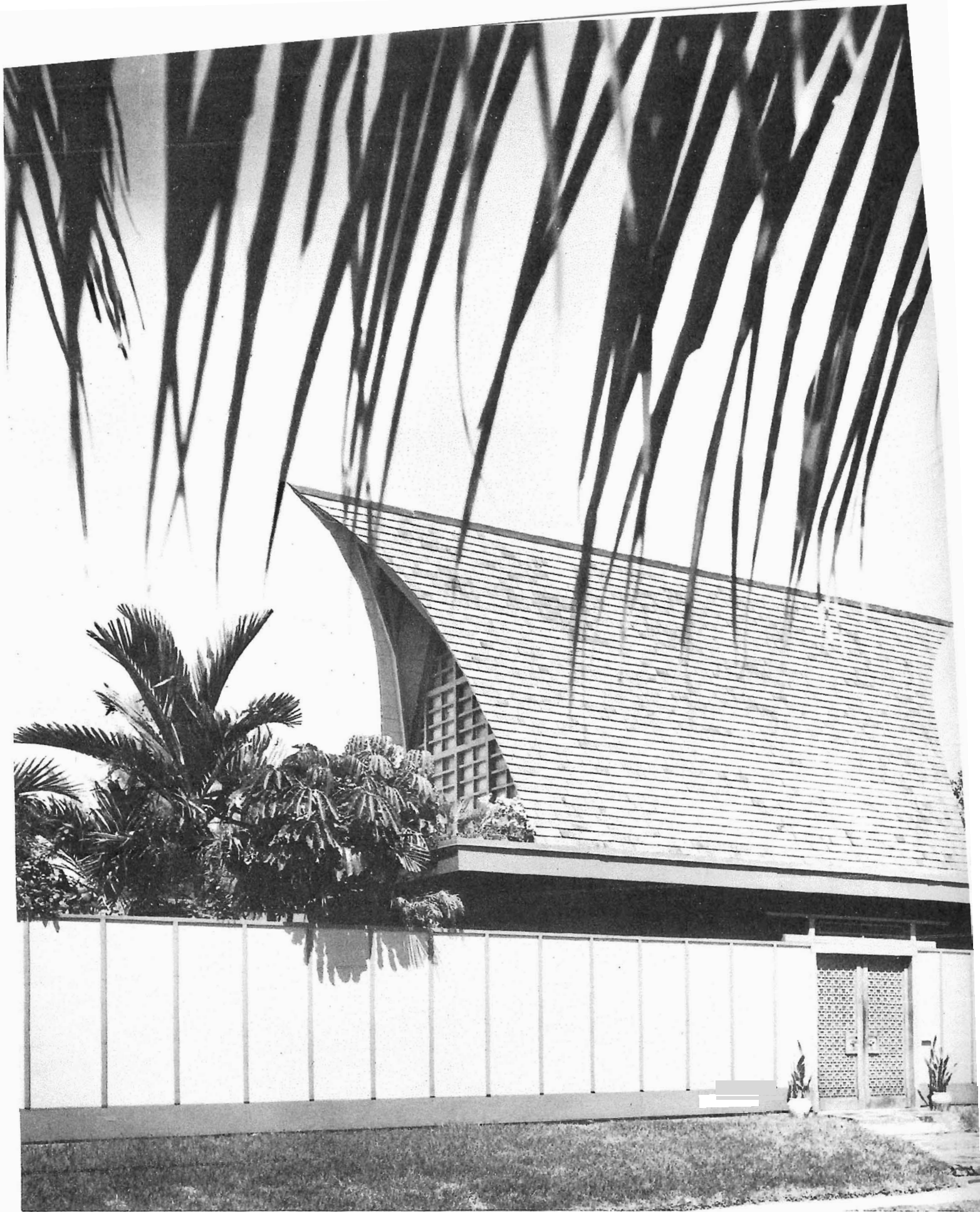
At the very tip of Florida, on the island of Key West, is "Polynesia," the bachelor retreat of William Johnson. The house is only two blocks from the point where the Atlantic Ocean meets the Gulf of Mexico and was designed to offer the utmost enjoyment of the temperate climate with its prevailing southerly breezes.

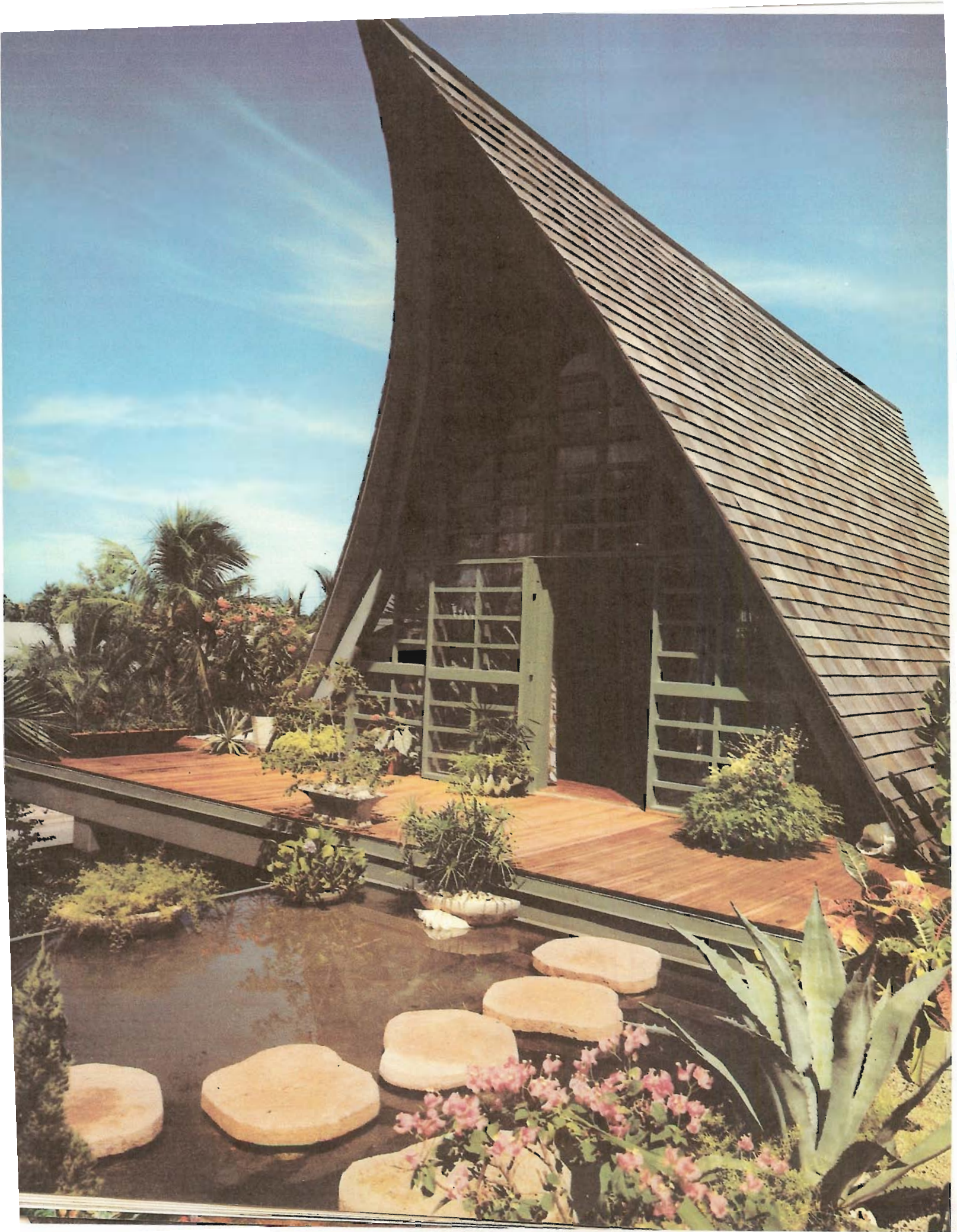
The soaring roof lines were inspired by South Sea island structures and were used to give the house a tropical atmosphere. A true indoor-outdoor plan was devised to make the most of the climate. All rooms of the house open onto gardens which are laden with verdant tropical plantings. Privacy was insured by a wall which surrounds both the house and the gardens without obstructing the gentle breezes.

In planning the house, every effort was made to provide a place for relaxed living and easy maintenance. Materials were carefully selected for their suitability to the tropics. Ships' timbers were hand picked for the beams and carefree surfaces were selected for the walls. A special brick which would not retain heat was used to pave the patios — loose laid for maximum drainage. The very design of the structure with its exterior walls and steeply pitched roofs was planned to be resistant to damage during the hurricane season.

The interiors were planned with the same consideration for comfort, practicality, and ease of maintenance. Walls are sheathed in wood, floors are poured terrazzo squares, and furniture is built in wherever possible. All fabrics were specially created for the house by designer Waldo Perez, A.I.D. and manufactured by Key West Handprints which is a company owned by Mr. Johnson. All accessories and appointments were selected to













INTERIOR DESIGN BY  
WALDO FRANK PEREZ, A.I.D.

PHOTOGRAPHED BY EZRA STOLLER ASSOCIATES

PRODUCT INFORMATION ON PAGE 96

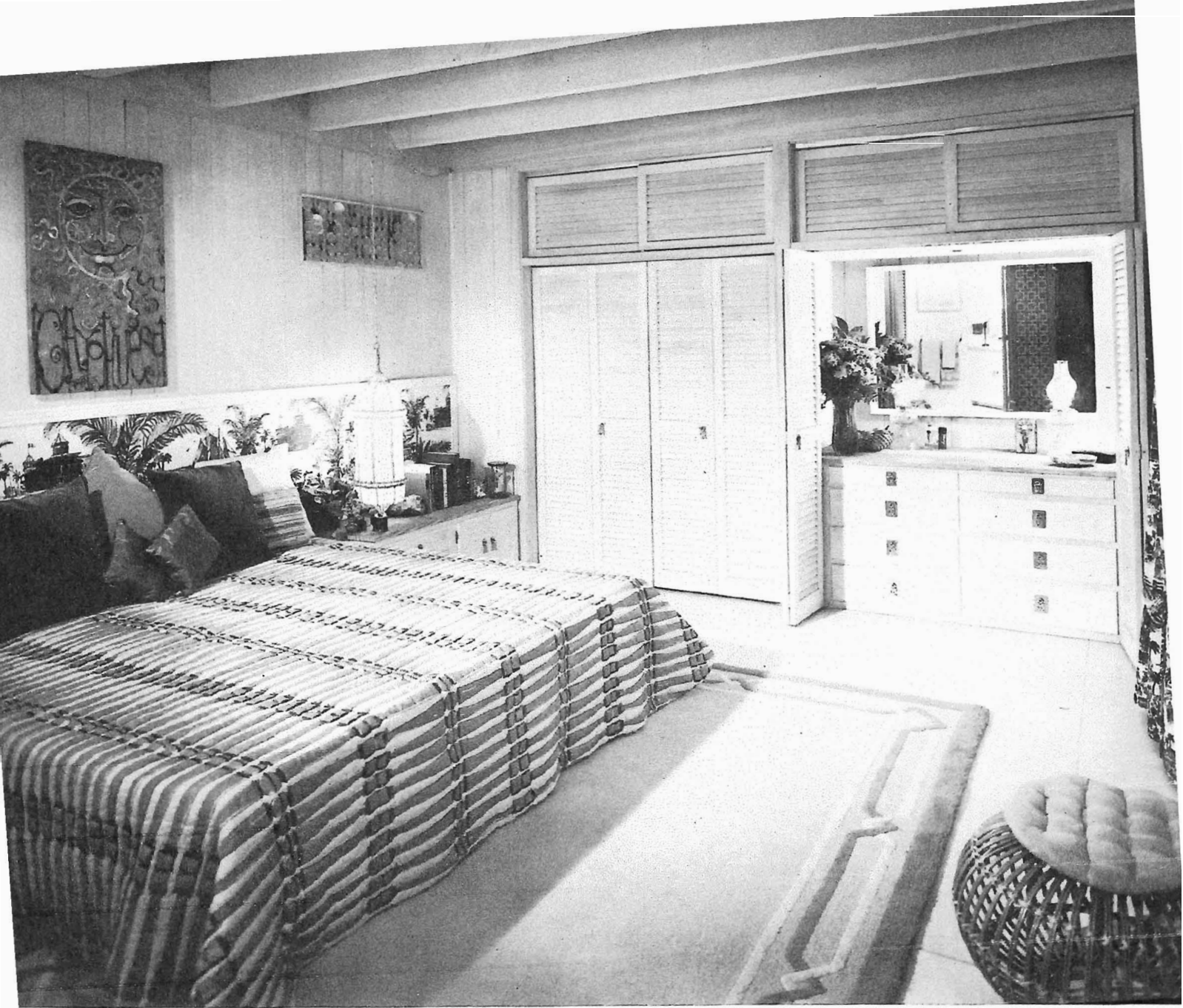
ON THE PREVIOUS SPREAD, in the Living Room, a brightly colored printed fabric depicting the flowers of Florida becomes the major focal point. The sofa is a custom design, lounge chairs are by Ficks Reed, coffee table is by Yale Burge. Each end of the room opens wide to gardens and outdoor living areas.

One end of the Living Room can serve for indoor dining or as a card table group, with a tropical garden as a backdrop. The country styled chairs are from Trouvailles, the table by Ficks Reed. The pattern of the Key West draperies was inspired by the Bottle-brush tree.









PHOTOGRAPHED BY EZRA STOLLER ASSOCIATES

*The Bedrooms have built-in storage and dressing areas enclosed with louvered shutters. The color scheme is green and brown, with yellow gold, all of which are repeated in the rug by Spinning Wheel. Special fabrics for the room were printed on linen. The pattern for the bedspread is entitled "Spindles"; the headboard and draperies are "Key West Toile."*

*This patio adjoins the Master Bedroom and Living Room and is used for sunning as well as outdoor dining and entertaining. From this patio, steps lead to the rooftop water garden and the second floor gameroom.*

