



THE CITY OF KEY WEST  
Tree Commission

Post Office Box 1409 Key West, FL 33041-1409  
Telephone: 305-809-3764

---

July 10, 2019

Florida Keys Aqueduct Commission  
1100 Kennedy Dr.  
Key West, FL 33040

To Whom, It May Concern:

The City of Key West Tree Commission recently considered your permit application, T2019-0298 for Conceptual Landscape Plan Approval with no tree removal for 521 Thomas Street, Key West, Florida, at their regularly scheduled meeting on July 9, 2019.

The Tree Commission approved the Conceptual Landscape Plan to allow the project to proceed through the permitting process with the Planning Board. Once you have received approval from the Planning Board and HARC Commission, application should be made again to the Tree Commission for Final Landscape Plan approval with Tree Removal.

Sincerely,

Karen DeMaria  
Urban Forestry Program Manager  
City of Key West  
1300 White Street  
Key West, FL 33040  
Office: (305) 809-3768  
Email: [kdemaria@cityofkeywest-fl.gov](mailto:kdemaria@cityofkeywest-fl.gov)

David Jackson  
Chairman, Tree Commission

Cc: Bender & Assoc. and/or Trepanier & Assoc.

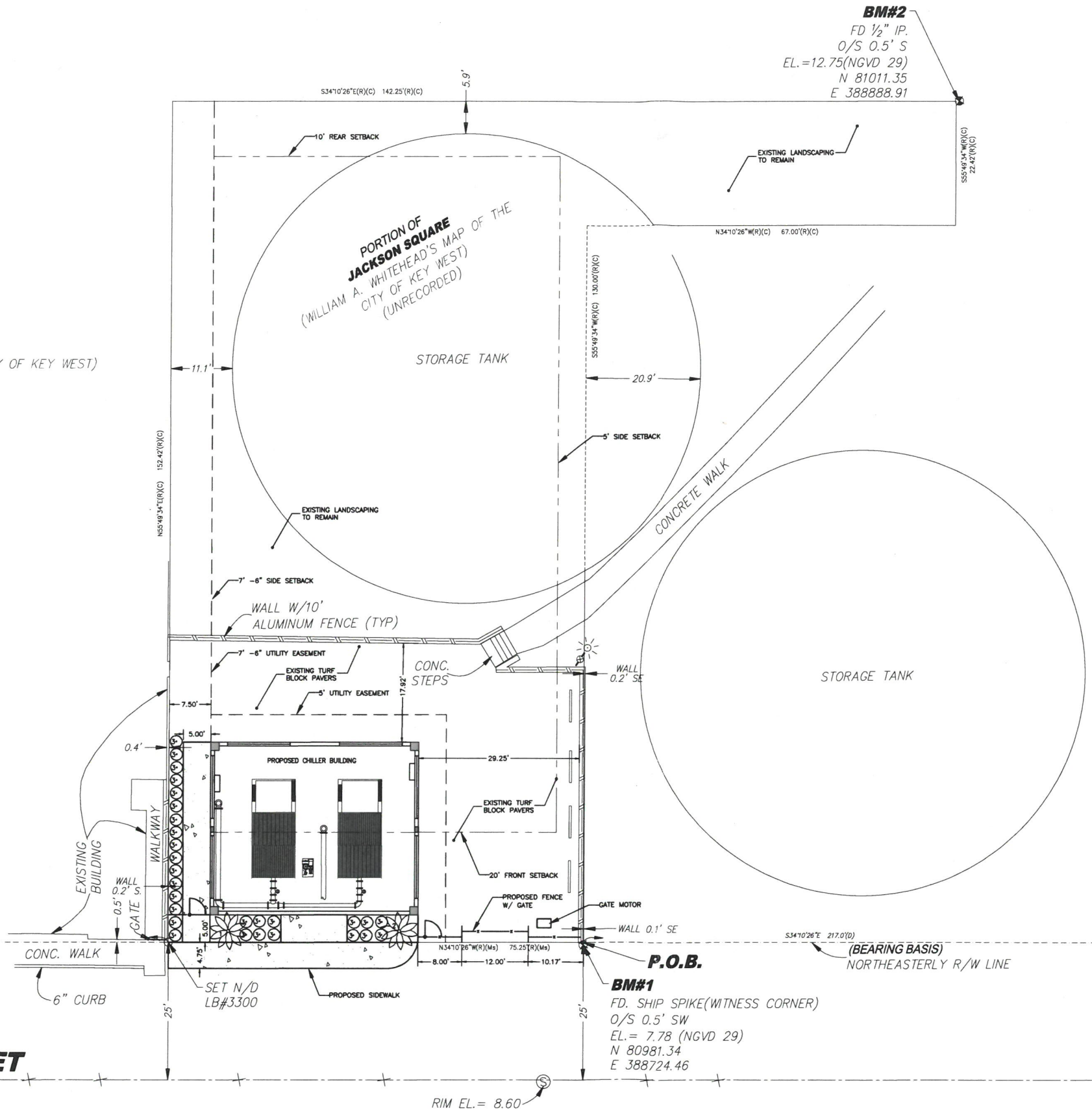
**BM#2**  
 FD 1/2" IP.  
 O/S 0.5' S  
 EL. = 12.75 (NGVD 29)  
 N 81011.35  
 E 388888.91

Permeable Surface Calculations			
Site	12972 SF		
Existing Tank Size	4645 SF	35.81%	
Existing Concrete Area	230 SF	1.77%	
Existing Pavers	3977 SF	30.66%	
Existing Site Non-Permeable	8852 SF	68.24%	
Existing Tank Size	4645 SF	35.81%	
Existing Concrete Area	230 SF	1.77%	
Remaining Pavers	2569 SF	19.80%	
New Concrete (at doors)	60 SF	0.46%	
New Building	1177 SF	9.07%	
New Site Non-Permeable	8681 SF	66.92%	
Reduction of	171 SF	1.32%	

PLANT LIST					
SYM	TYP	COMMON NAME	SCIENTIFIC NAME	SPECIFICATION	QUAN
1	TA	Pink Tabebuia	Tabebuia impetiginosa	3" Cal.; 10' OA	1
2	EF	Spanish Stopper	Eugenia foetida	15 gal.; 5' x 3'	1
3	CI	Cocoplum	Chrysobalanus icaco	3 gal.; 24" x 24"	28

SITE DATA TABLE & SITE DESCRIPTION				
	Code	Requirement	Existing	Proposed Variance Request
Zoning	HPS			
Flood Zone	X			
Size of Site	12,972 SF			
Height	25'	30' Tank	27'	2'
Front Setback	20'	20'	5'	15'
Side Setback	5'	11'-1"	7'-6"	2.5'
Side Setback	5'	0'	0'	5'
Street Side Setback	N/A			
Rear Setback	10'	5.9'	5.9'	
F.A.R.	1		1	
Building Coverage	40%	35.8%	44.9%	4.9%
Impervious Surface	50%	67.4%	66.9%	
Parking	0	0	0	0
Handicap Parking	0	0	0	0
Bicycle Parking	0	0	0	0
Open Space/ Landscaping	30%	32.6%	32.2%	0.0%
Number and type of units	0	0	0	0
Consumption Area or Number of seats	0	0	0	0

REMAINDER OF JACKSON SQUARE  
 (WILLIAM A. WHITEHEAD'S MAP OF THE CITY OF KEY WEST)  
 (UNRECORDED)



**THOMAS STREET**

50' R/W ASPHALT

RIM EL. = 8.60

REVISIONS			EOR	MONROE COUNTY PUBLIC WORKS/ENGINEERING DIVISION 1100 Simonton Street, Suite 2-231 Key West, Florida 33040 (305) 292-4560 FAX (305) 292-4558	MONROE COUNTY PUBLIC WORKS/ENGINEERING DIVISION PROJECT NAME JEFFERSON BROWN COMMUNICATION TOWER AND CHILLER RELOCATION THOMAS STREET KEY WEST, FL. 33040	SHEET NO. <b>C1.0</b>
DATE	BY	DESCRIPTION				
			RAY NIX, P.E. No. 86714		<b>JEFFERSON BROWN SITE &amp; LANDSCAPE PLAN</b>	

VARIANCE SUBMITTAL