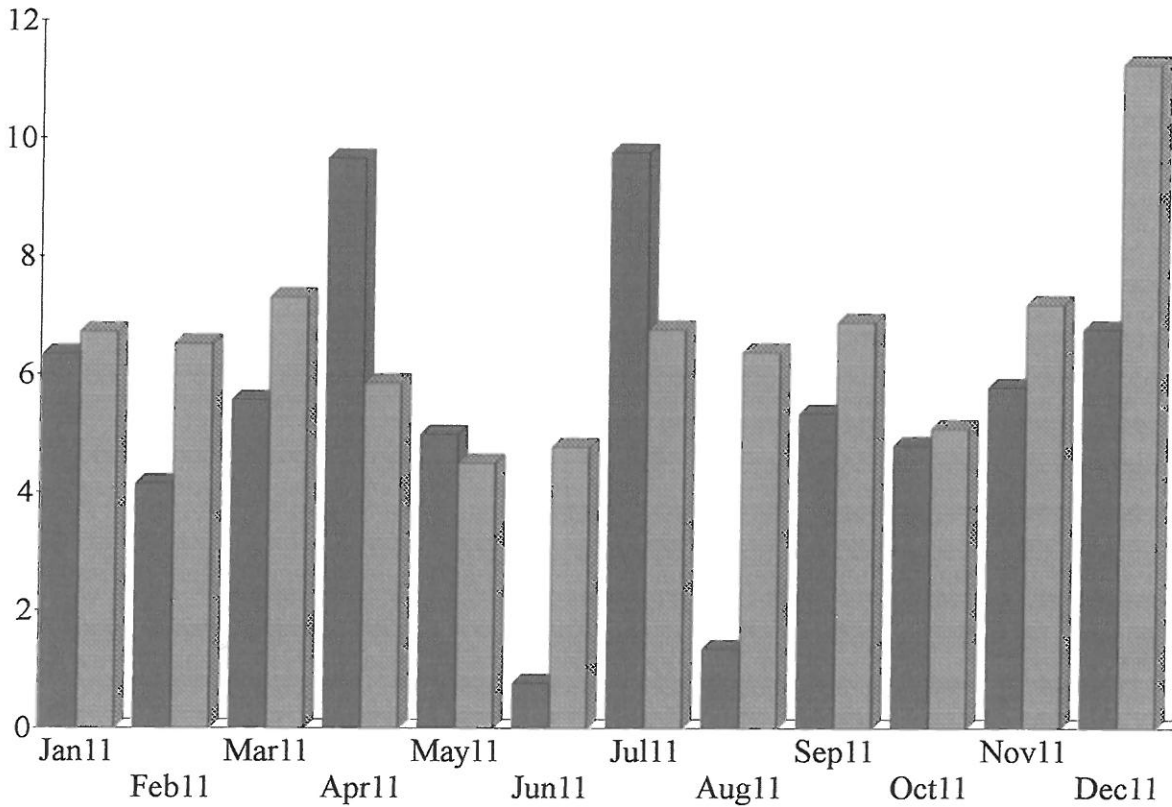


Income and Expense by Month
January through December 2011

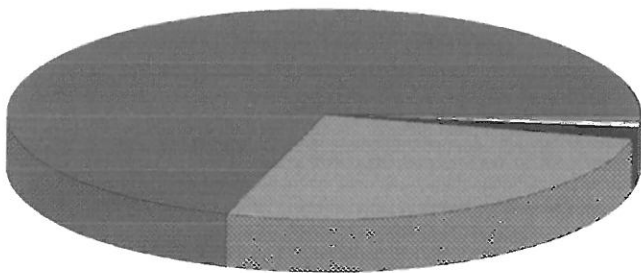
Income
Expense

\$ in 1,000's



Income Summary
January through December 2011

Program Revenue - City of Key W	%70.14
Contributions Income	26.49
T-shirt Sales	1.80
pay pal donation	0.80
pavilion rental	0.77
Total	\$65,342.90



By Account

7:19 PM
12/12/13
Cash Basis

Key West Wild Bird Center, Inc.
Profit & Loss
January through December 2011

	Jan - Dec 11
Ordinary Income/Expense	
Income	
Contributions Income	17,311.08
pavilion rental	500.00
pay pal donation	524.32
Program Revenue - City of Key W	45,828.50
T-shirt Sales	1,179.00
Total Income	65,342.90
Gross Profit	65,342.90
Expense	
Automobile Expense	2,954.15
Bank Service Charges	307.18
Chicken	
Auto expense - Chicken run	541.23
Chicken medicine	661.68
Chicken Supplies	3,974.29
Total Chicken	5,177.20
Continuing Education	0.00
Depreciation Expense	1,959.00
Equipment Rental	65.00
Insurance	
Auto	1,357.62
Liability Insurance	1,819.74
Total Insurance	3,177.36
Interest Expense	
Finance Charge	316.65
Total Interest Expense	316.65
Licenses and Permits	136.25
Marketing	
Marketing Supplies	219.39
Total Marketing	219.39
Medical waste disposal	
Cremation	408.50
Total Medical waste disposal	408.50
Miscellaneous	419.60
Office Supplies	665.99
Parking	24.75
Payroll Expenses	
Processing fee	1,504.12
Payroll Expenses - Other	43,990.36
Total Payroll Expenses	45,494.48
Postage and Delivery	127.34
Professional Fees	
Accounting	970.00
Total Professional Fees	970.00
Rent	70.00
Supplies	
Cleaning Supplies	544.67
Medical	365.66
T-shirt supplies	785.75
Supplies - Other	698.04
Total Supplies	2,394.12
Telephone	1,387.43
Tools & Equipment	230.12

7:19 PM
12/12/13
Cash Basis

Key West Wild Bird Center, Inc.
Profit & Loss
January through December 2011

	<u>Jan - Dec 11</u>
Travel & Ent	
Meals	88.73
Travel	273.75
Travel & Ent - Other	91.59
Total Travel & Ent	<u>454.07</u>
Wild Bird	
Wild Bird Food	
Crickets	1,492.00
Total Wild Bird Food	<u>1,492.00</u>
Wild Bird medicine	170.87
Wild Bird Supplies	10,491.94
Wild Bird Veterinary Services	205.30
Total Wild Bird	<u>12,360.11</u>
Total Expense	<u>79,318.69</u>
Net Ordinary Income	<u>-13,975.79</u>
Net Income	<u><u>-13,975.79</u></u>

Chicken Expenses Key West Wildlife Center 2011

Payroll Processing Fee	\$	1,504.12
Michelle Anderson (Full Salary)	\$	6,150.00
Sarah Goodwin (Full Salary)	\$	3,000.00
Thomas Sweets (Full Salary)	\$	23,120.00
Peggy Coontz (Quarter Salary)	\$	2,688.00
Total Salary	\$	36,462.12
Chicken Expenses	\$	5,177.20
Insurance Automobile	\$	1,357.62
Insurance Liability	\$	1,819.74
Professional Fees: Accounting	\$	970.00
Repairs Computer	\$	-
Repairs Equipment	\$	-
Supplies: Cleaning Supplies	\$	544.67
Telephone	\$	138.43
Tools Equipment	\$	230.12
Office Supplies (Half)	\$	333.00
Automobile Expense (Half)	\$	1,477.08
Total Expenses	\$	12,047.86
Total	\$	48,509.98