

STAFF REPORT

DATE: August 27, 2018

RE: **1213 14th Street (permit application # T18-9148)**

FROM: Karen DeMaria, City of Key West Urban Forestry Manager

An application was received requesting the approval of a Conceptual Landscape Plan for a Major Development Plan to create residential housing. The plan involves the removal of **(8) Green Buttonwood trees and (1) Washingtonian Palm**. Two Black Mangrove trees will be trimmed and will remain on the property along the sidewalk. A site inspection was done and documented the following:

Trees requesting removal:

Tree Species: Green Buttonwood (*Conocarpus erectus*)

Tree #3:





08/20/2018



08/20/2018





Diameter: 19.25"

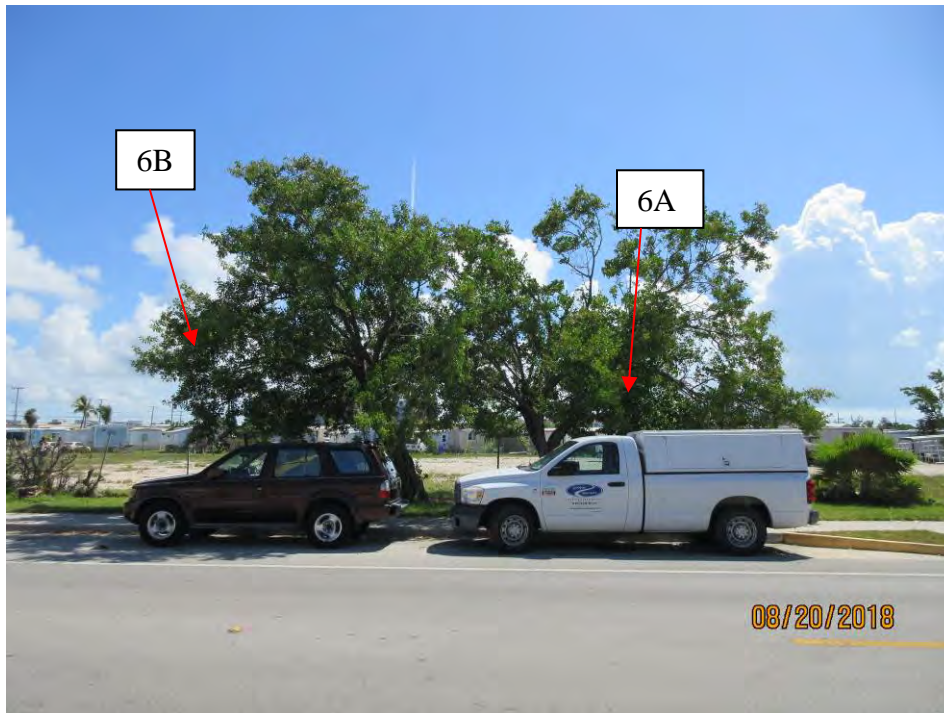
Location: 40% (large canopy tree species too close to sidewalk and high voltage electrical lines and the guidewires for the poles)

Species: 100% (on protected tree list)

Condition: 50% (fair to poor, continual structure issues due to required canopy pruning)

Total Average Value = 63%

Value x Diameter = 12.1 replacement caliper inches



Tree 6 A:



Diameter: 16"

Location: 60% (large canopy tree planted close to sidewalk)

Species: 100% (on protected tree list)

Condition: 60% (fair, mechanical damage to surface roots and tree base area.)

Total Average Value = 73%

Value x Diameter = 11.6 replacement caliper inches

Tree 6B:



Diameter: 20.3"

Location: 80%

Species: 100% (on protected tree list)

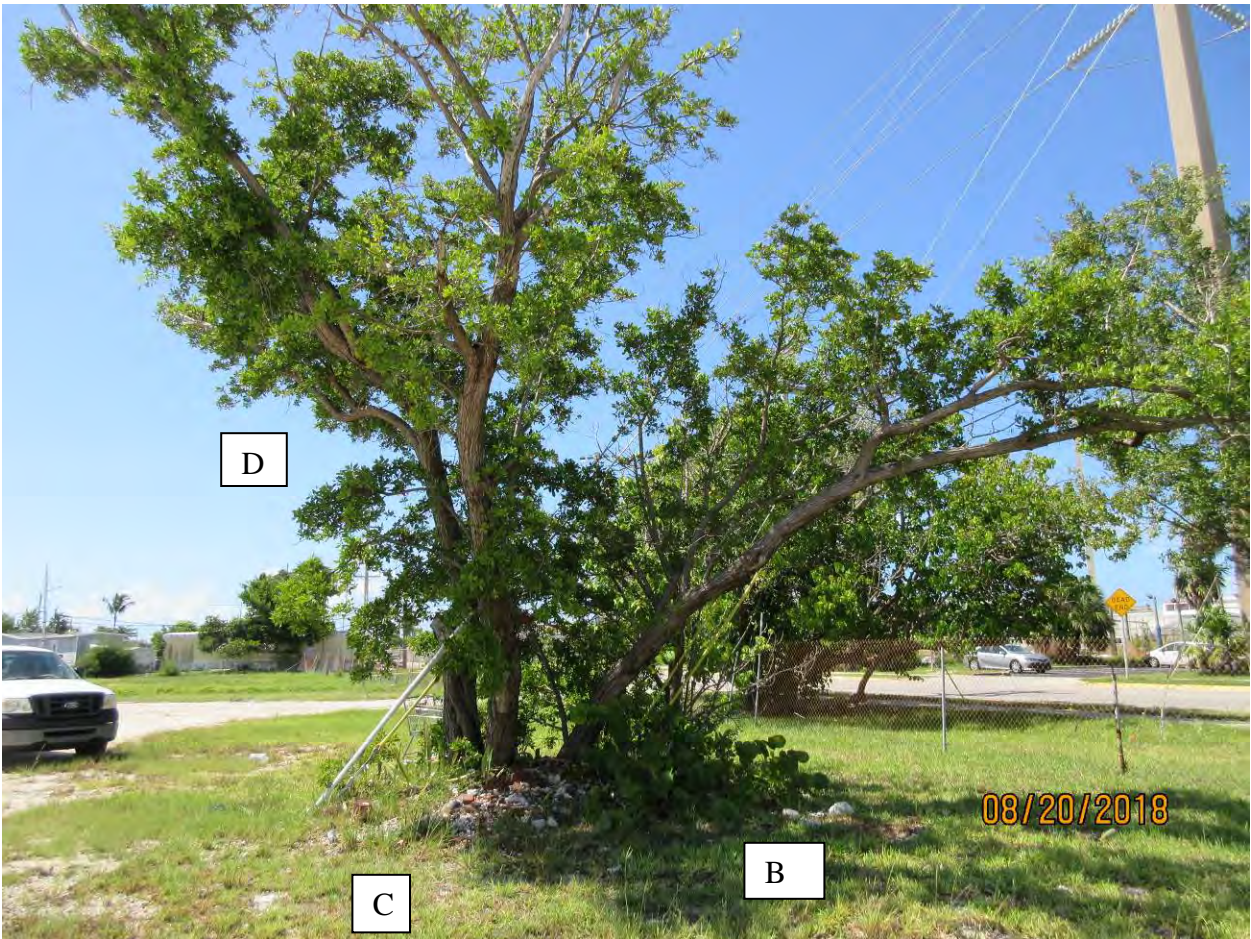
Condition: 40% (fair to poor, some decay in canopy, strong growth lean)

Total Average Value = 73%

Value x Diameter = 14.8 replacement caliper inches

Tree 20B, C, D:





Tree 20B: Diameter: 10.8"

Location: 50% (canopy and root system intertwined with two other canopy trees, guide wires for electrical pole part of impacts)

Species: 100% (on protected tree list)

Condition: 30% (very poor, structure with heavy lean and one sided canopy)

Total Average Value = 60%

Value x Diameter = 6.4 replacement caliper inches

Tree 20C: Diameter: 13"

Location: 50% (canopy and root system intertwined with two other canopy trees, guide wires for electrical pole part of impacts)

Species: 100% (on protected tree list)

Condition: 40% (poor)

Total Average Value = 63%

Value x Diameter = 8.1 replacement caliper inches

Tree 20D: Diameter: 15"

Location: 50% (canopy and root system intertwined with two other canopy trees, guide wires for electrical pole part of impacts)

Species: 100% (on protected tree list)

Condition: 40% (poor)

Total Average Value = 63%

Value x Diameter = 9.4 replacement caliper inches

Tree 21 A & B:





08/20/2018



Diameter: 39.3" (multiple trunks-one large rootball)

Location: 80%

Species: 100% (on protected tree list)

Condition: 40% (poor, low codominant branching, poor, elongated tree structure, die back in canopy)

Total Average Value = 73%

Value x Diameter = 11.3 replacement caliper inches

Tree 23:









Diameter: 2" (only one trunk tree sized, rest of clump a shrub)

Location: 70% (currently growing in debris)

Species: 100% (on protected tree list)

Condition: 40% (poor)

Total Average Value = 70%

Value x Diameter = 1.4 replacement caliper inches

1213 14th Street 8-28-18 KKD

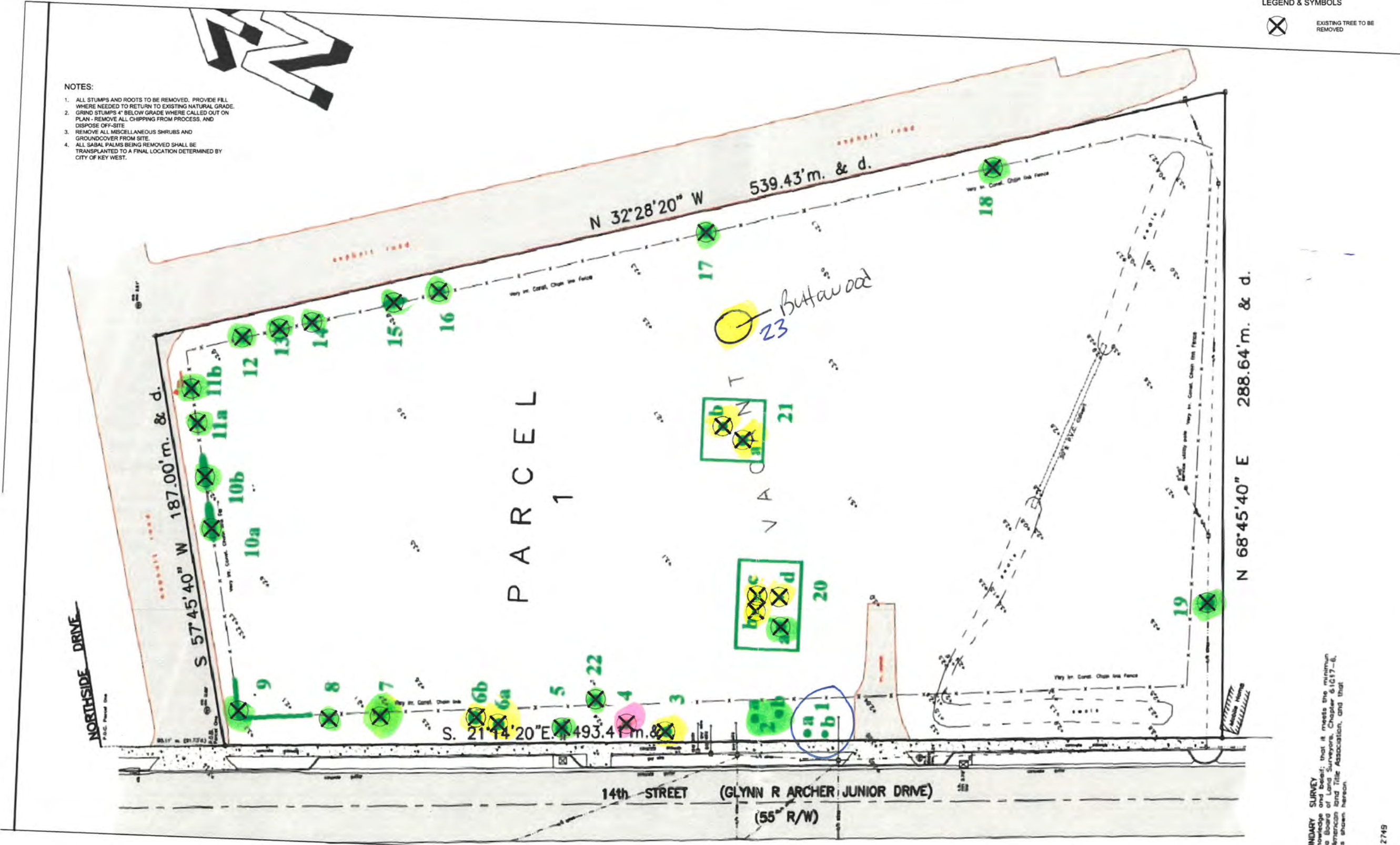
KW TC Status	Tree #	Tree Common Name	Height/DBH	Action	Replacement
Protected	1A 7 B	Black Mangrove		Remain	NA
NPR	2A & B	Cork Tree-Thespesia populnea		Remove	NA
Protected	3	Green Buttonwood	19.25" dbh	Remove	12.1"
Regulated	4	Washingtonian Palm	20 ft tall	Remove	1-4 ft tall palm
NPR	5	Cork Tree-Thespesia populnea		Remove	NA
Protected	6A	Green Buttonwood	16"	Remove	11.6"
Protected	6B	Green Buttonwood	20.3"	Remove	14.8"
NPR	7	Green Buttonwood	Shrub	Remove	NA
NPR	8	Cork Tree-Thespesia populnea		Remove	NA
NPR	9	Green Buttonwood	Shrub	Remove	NA
NPR	10 A & B	Lead Tree-Leucaena leucocephala		Remove	NA
NPR	11 A & B	Brazilian Pepper		Remove	NA
NPR	12	Brazilian Pepper		Remove	NA
NPR	13	Washingtonian Palm		Remove	NA
NPR	14	Green Buttonwood	Shrub	Remove	NA
NPR	15	Australian Pine		Remove	NA
NPR	16	Brazilian Pepper		Remove	NA
NPR	17	Green Buttonwood	Shrub	Remove	NA
NPR	18	Washingtonian Palm	4 ft tall	Remove	NA
NPR	19	Australian Pine		Remove	NA
NPR	20A	Cork Tree-Thespesia populnea		Remove	NA
Protected	20B	Green Buttonwood	10.8"	Remove	6.4"
Protected	20C	Green Buttonwood	13"	Remove	8.1"
Protected	20D	Green Buttonwood	15"	Remove	9.4"
Protected	21A & B	Green Buttonwood	39.3" dbh	Remove	28.6"
NPR	22	Washingtonian Palm	5 ft tall	Remove	NA
Protected	23	Green Buttonwood	2" dbh	Remove	1.4"

 Regulated tree

LEGEND & SYMBOLS
 EXISTING TREE TO BE REMOVED

NOTES:

1. ALL STUMPS AND ROOTS TO BE REMOVED. PROVIDE FILL WHERE NEEDED TO RETURN TO EXISTING NATURAL GRADE.
2. GRIND STUMPS 4" BELOW GRADE WHERE CALLED OUT ON PLAN - REMOVE ALL CHIPPING FROM PROCESS, AND DISPOSE OFF-SITE.
3. REMOVE ALL MISCELLANEOUS SHRUBS AND GROUNDCOVER FROM SITE.
4. ALL SABAL PALMS BEING REMOVED SHALL BE TRANSPLANTED TO A FINAL LOCATION DETERMINED BY CITY OF KEY WEST.






Red BOUNDARY SURVEY of my knowledge and belief; that it meets the minimum of the Florida Board of Land Surveyors, Chapter 61G17-6, and the American Land Title Association, and that its unless shown, herein.

Upper No. 2749

1 DEMOLITION PLAN
D1.1 1"=20'

8-23-18
KD

 canopy tree removal
 Palm removal
 No permit required for removal

Photos of the property:

















STAFF REPORT

DATE: August 28, 2018

RE: **1213 14th Street**
(permit application # T18-9148)

FROM: Karen DeMaria, City of Key West Urban Forestry Manager

An application was received for Conceptual Landscape Plan Approval with Tree Removal. A staff report was created on August 27, 2018 regarding the removal of trees in relation to the development of housing. The report is attached.

The proposed project is requesting the removal of (8) Green Buttonwood trees and (1) Washingtonian Palm tree. If the removal approvals are all granted, a total of 92.4 caliper inches of trees and (1) native palm, 4 ft tall must be planted on site and incorporated into the landscape plan. The Landscape Plan submitted does incorporate all the required tree removal replacements and is over 70% native vegetation.

Recommendation: Recommend approval of the Conceptual Landscape Plan with Tree Removal at 1213 14th Street to include the approval to remove (8) Green Buttonwood trees and (1) Washingtonian Palm to be replaced with 92.4 caliper inches of native dicot and/or fruit trees from the approved list, FL#1, and 1- native palm tree to be planted onsite