



Truman Waterfront Park Project Progress Update

21 November 2016



CHARLEY
Loppino
& SONS, INC.
KEY WEST, FL



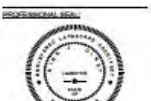
Architecture • Engineering • Planning
Interior Design • Landscape Architecture
2001 South Bayshore Drive
Suite 1000
Miami, Florida 33133
(305) 859-2000
Fax (305) 880-3700

~~PREPARED FOR:~~
CITY OF KEY WEST, FL
P. O. BOX 1609
3140 FLAGLER AVENUE
KEY WEST, FL 32641



PROJECT LOCATION/ADDRESS:
TRUMAN WATERFRONT PARK
WEST OF FORT STREET AND THE
TRUMAN ANNEX DEVELOPMENT,
NORTH OF KEY WEST NAVAL BASE

OUR CONSULTANT ASSOCIATION



KEVIN J. DUNEY
FLORIDA REGISTERED LANDSCAPE
ARCHITECT
LA3001788

BIDDING
August 30, 2015

REVIEWS:

00-20-15 ADDENDA No. 2

DRAWING RE-EVALUATION

SCALE: $T = 100^{\circ}\text{C}$

DATE: _____

CHECKED BY: RPH

DRAWING TITLE:
BLASING

NOTICE TO

PROCEED PLAN

SHEET NO. _____

PP-00

Overall NTP Parcel Plan

**Notice to Proceed
[NTP] 1 and 2 Received:
7 December 2015**



Combined Overall Parcel and NTP Phasing Plan:



Site Field Office Installation At Police Athletic League [PAL]



City of Key West and
Charley Toppino and Sons, Inc

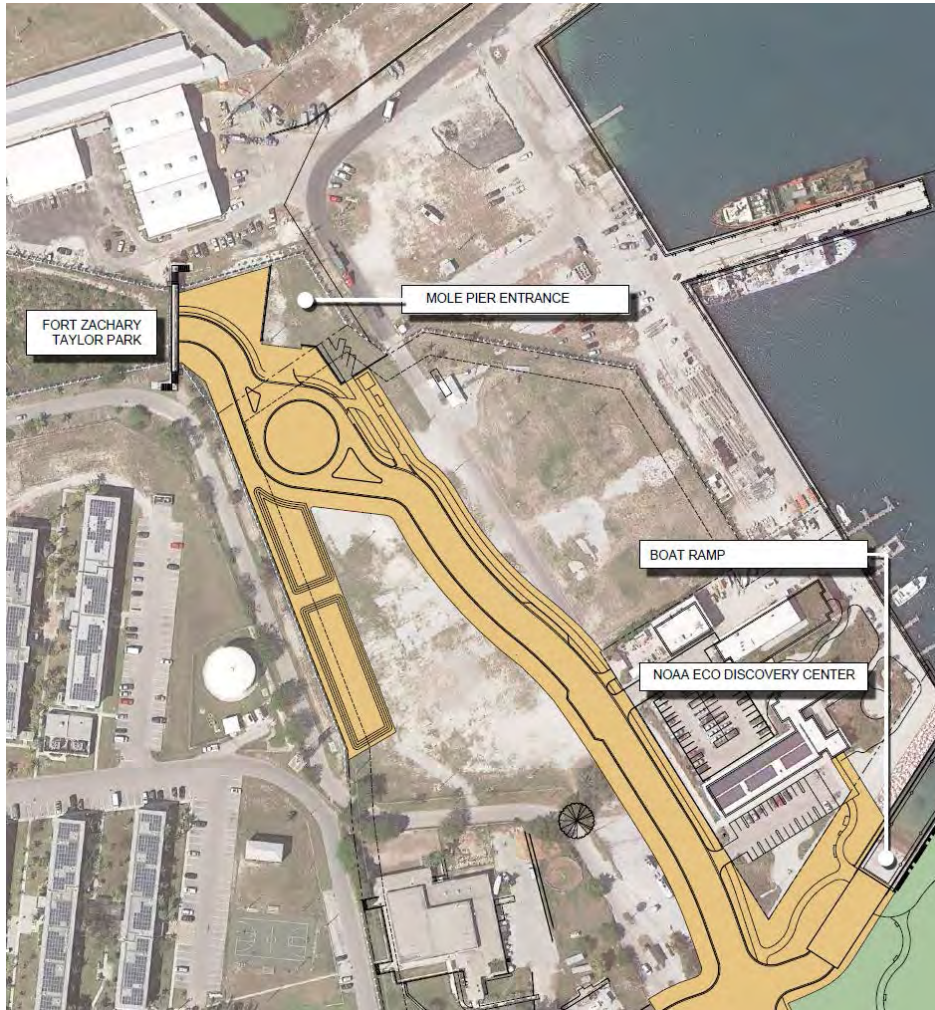
January 2016





NTP1 Phase 1- Parcel C

Mobilization: February 2016



KeyPlan



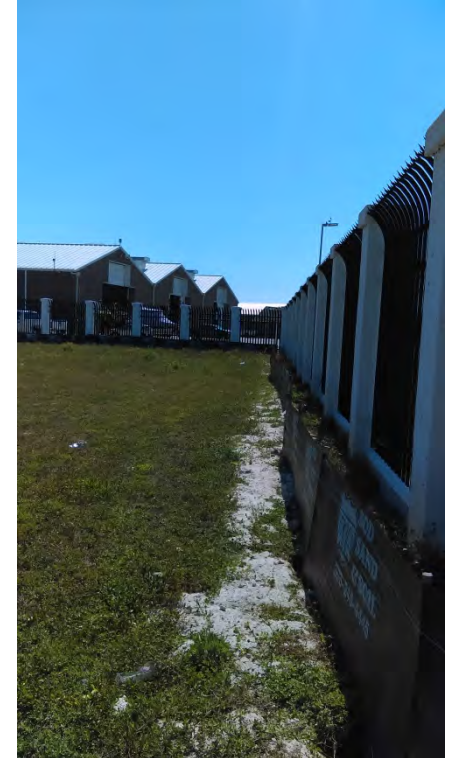
NTP1 Phase 1- Parcel C

Utilities Locating and Construction Mobilization February 2016





NTP1 Phase 1- Parcel C Site Clearing/ Demo: February through March 2016



NTP1 Phase 1- Parcel C



Temporary Injection Well for Underground Trench Dewatering March 2016

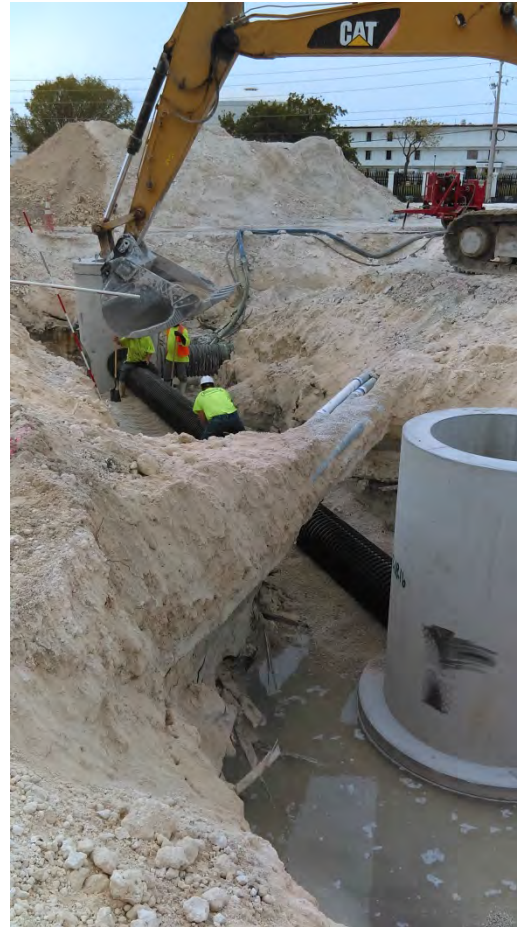


NTP1 Phase 1 Parcel C Underground Utilities

New Storm and Sanitary System

13 Storm Structures
5 Sanitary Manholes
3,780 Lineal Feet of Pipe

April through August 2016



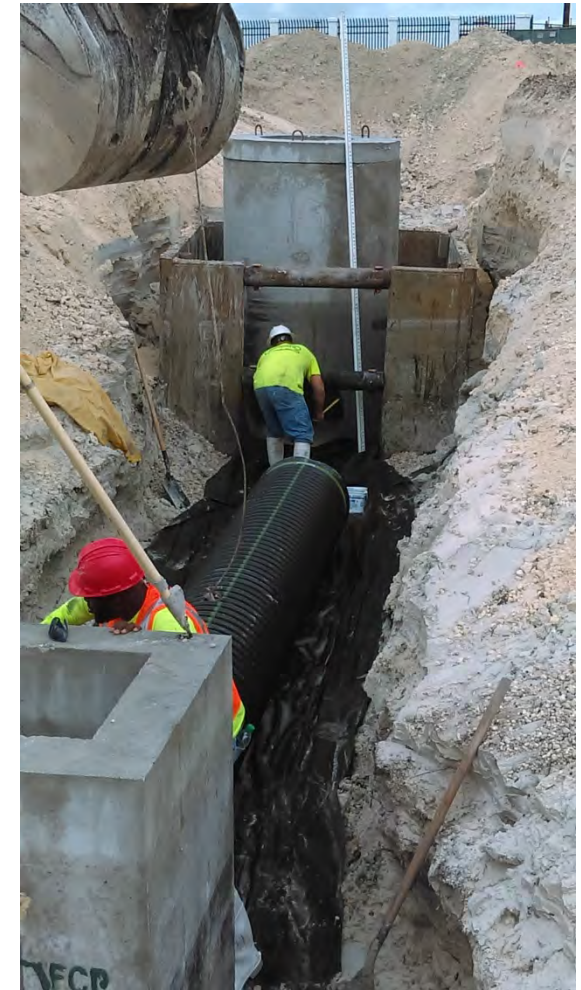


NTP1 Phase 1 Parcel C Underground Utilities

New Storm and Sanitary System

13 Storm Structures
5 Sanitary Manholes
3,780 Lineal Feet of Pipe

April through August 2016



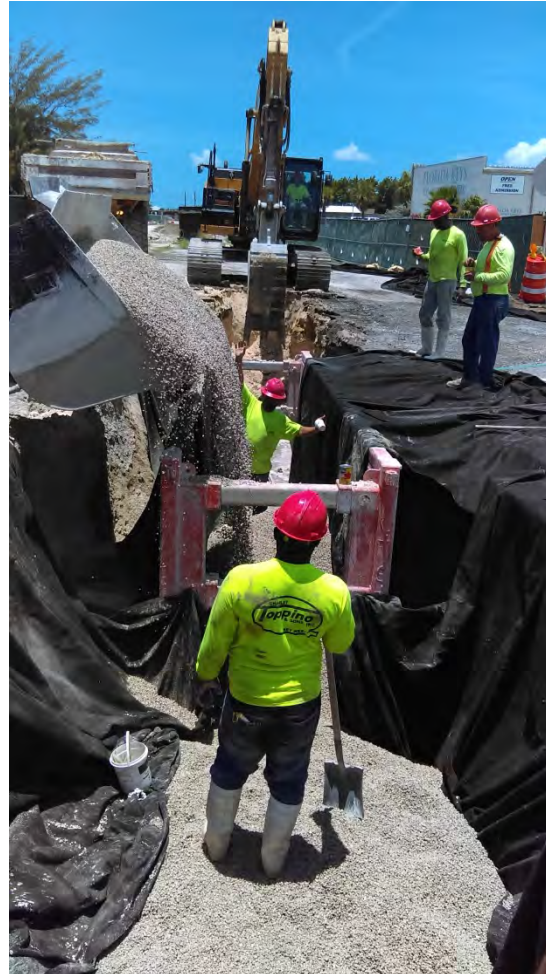


NTP1 Phase 1 Parcel C Underground Utilities

New Storm and Sanitary System

13 Storm Structures
5 Sanitary Manholes
3,780 Lineal Feet of Pipe

April through August 2016





NTP1 Phase 1- Parcel C Roadway August through October 2016





NTP1 Phase 1- Parcel C Roadway August through October 2016





NTP1 Phase 1- Parcel C

Roadway

August through October 2016





NTP1 Phase 1- Parcel C

Roadway Work

August through October 2016



NTP1 Phase 1- Parcel C

Curb and Sidewalk Installation:
Sidewalk- 19,884 Square Feet
Curb – 3,996 Lineal Feet
Driveway- 2400 Square Feet

August through Present Date





NTP1 Phase 1- Parcel C Roadway Work August through October 2016





NTP1 Phase 1- Parcel C Roadway Work August through October 2016





NTP1 Phase 1- Parcel C

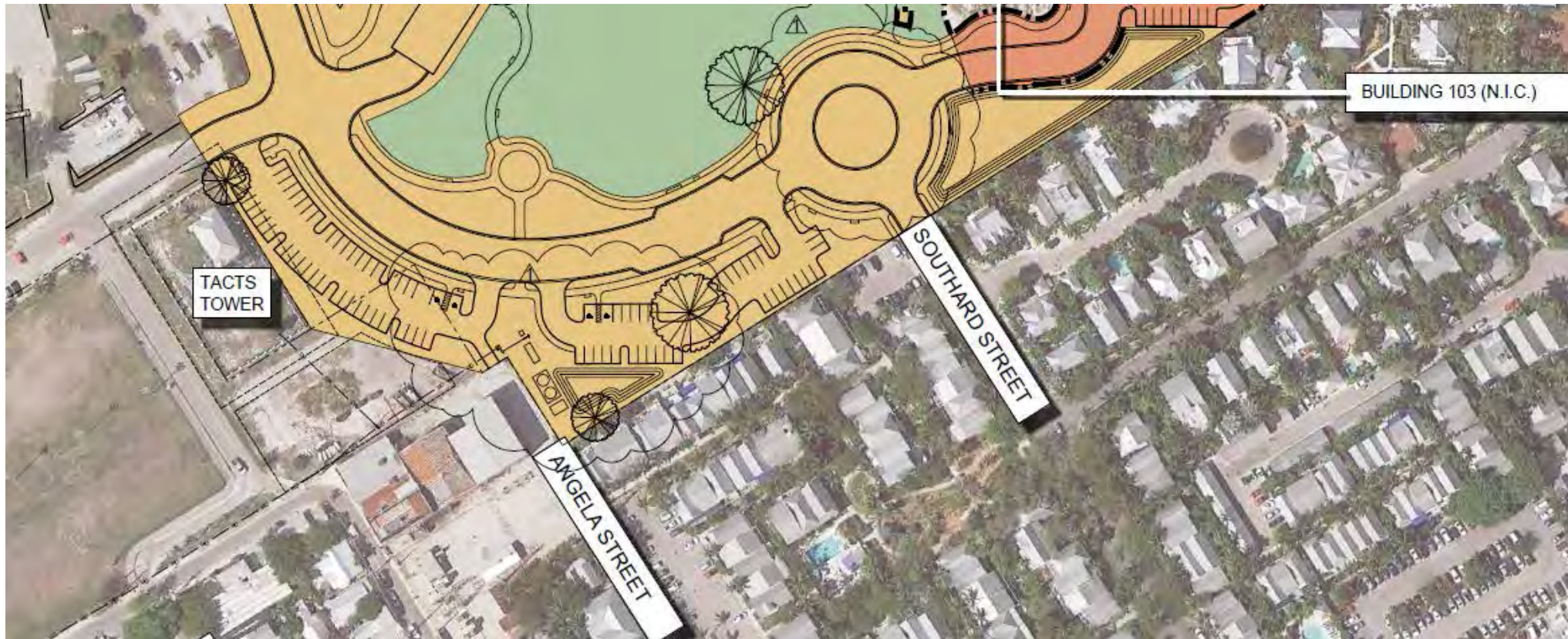
Current Status: 70% Complete



NTP1 Phase 2 Mobilization: May 2016



KeyPlan



NTP1 Phase 2

Mobilization: May 2016





NTP1 Phase 2 Site Clearing/ Demo: May 2016



NTP1 Phase 2

Tree Protection and Relocation



6 Trees Protected in Place
6 Trees Relocated to date



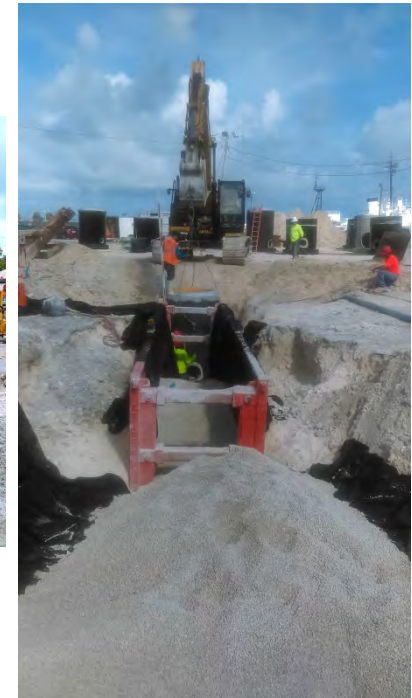


NTP1 Phase 2 Underground Utilities

New Storm and Sanitary System

7 Storm Structures
5 Sanitary Manholes
1800 Lineal Feet of Pipe

May through Current date 2016



NTP1 Phase 2 Underground Utilities

New Storm and Sanitary System

7 Storm Structures
5 Sanitary Manholes
1,800 Lineal Feet of Pipe

May through Current date 2016



NTP1 Phase 2

New Roadway and Parking

October 2016 through Current Date





NTP1 Phase 2

Current Status: 35% Complete



NTP2 E2 Parcel Mobilization: July 2016



KeyPlan



NTP2 E2 Parcel

Mobilization: July 2016



NTP2 E2 Parcel

Mobilization, Site Clearing/Demo:

July 2016



NTP2 E2 Parcel

New Storm Drains and Exfiltration
23 Nyloplast Drain Inlets
2,150 Lineal Feet of Pipe
August to October 2016



NTP2 E2 Parcel

New Storm Drains and Exfiltration
23 Nyloplast Drain Inlets
2,150 Lineal Feet of Pipe
August to October 2016



NTP2 E2 Parcel

Saw Cutting of Existing Quay Concrete

October 2016





NTP1 Phase 2 and NTP2

5 New Primary Electric Poles November 2016



Project Overall Status: Water Main Work 60% Complete





NTP2 – E2

Current Status: 20% Complete





NTP1-NTP2 Overall Project Status Complete to Date:

Schedule of Values and Percent [%] Complete:

Mobilization and MOT = 90%

Site Clearing and Demolition = 90%

Grading/ Cut/ Fill = 80%

Storm Drain System = 85%

Sanitary System = 85%

Domestic Water = 60%

4" and 6" Concrete = 35%

Asphalt = 45%

Electrical = 47%

43 Storm Structures and Inlets

10 Sanitary Manhole Structures

6,740 Lineal Feet of Pipe

19,884 Square Feet of Sidewalk

2,400 Square Feet of Driveway

3,996 Lineal Feet of Curb





NTP1-NTP2 Overall Project Work Remaining:

1 Sanitary Manholes with + /-340' LF Sanitary Line
11 Remaining Storm Structures 2 Weirs +/-860 Lineal Feet of Pipe Permanent
20% Remaining of Water System
Restroom
Irrigation System and Landscaping
Primary Electric Service
Site Lighting
Interactive Water Feature
Playground and Playground Equipment
Park Furnishings and Equipment including:
Benches,
Trash Receptacles,
and Bike Racks
New Fencing and Railing

Construction Completion - NTP1 and NTP2: 04 December 2017

Anticipated Issuance of Notice to Proceed for NTP-3: January 2017

