

City of
Key West

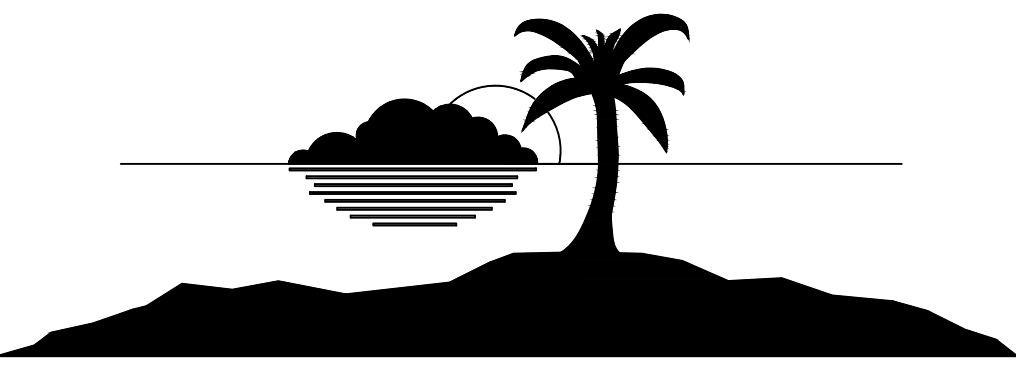
County of
Monroe
(Bayshore Manor)

KEY WEST GOLF COURSE

CURVE	RADIUS	ARC LENGTH	CHORD LENGTH	CHORD BEARING	DELTA ANGLE	TANGENT
C3	446.86'	208.74'	206.85'	N 14°24'21" W	26°45'53"	106.51'
C4	446.86'	93.59'	93.42'	S 33°47'12" E	11°59'59"	46.97'
C5	361.02'	90.91'	90.67'	N 47°00'08" W	14°25'40"	45.70'
C6	265.00'	122.51'	121.42'	S 40°58'20" E	26°29'16"	62.37'

Sheet 2 of 3

Key West Botanical Garden
Boundary Survey
5100 College Road, Key West, FL 33040



ENGINEERS PLANNERS SURVEYORS

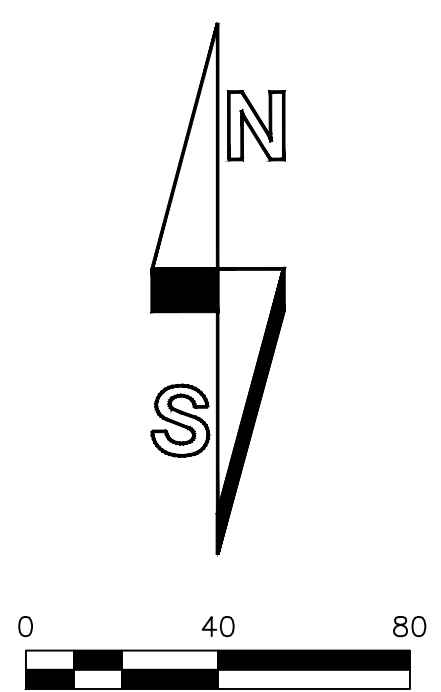
3152 Northside Drive
Suite 201
Key West, FL 33040
(305) 293-0466
Fax: (305) 293-0237
fhildeb1@bellsouth.net
L.B. No. 7700

fred\drawings\stock\island\botanicalgardens\as built

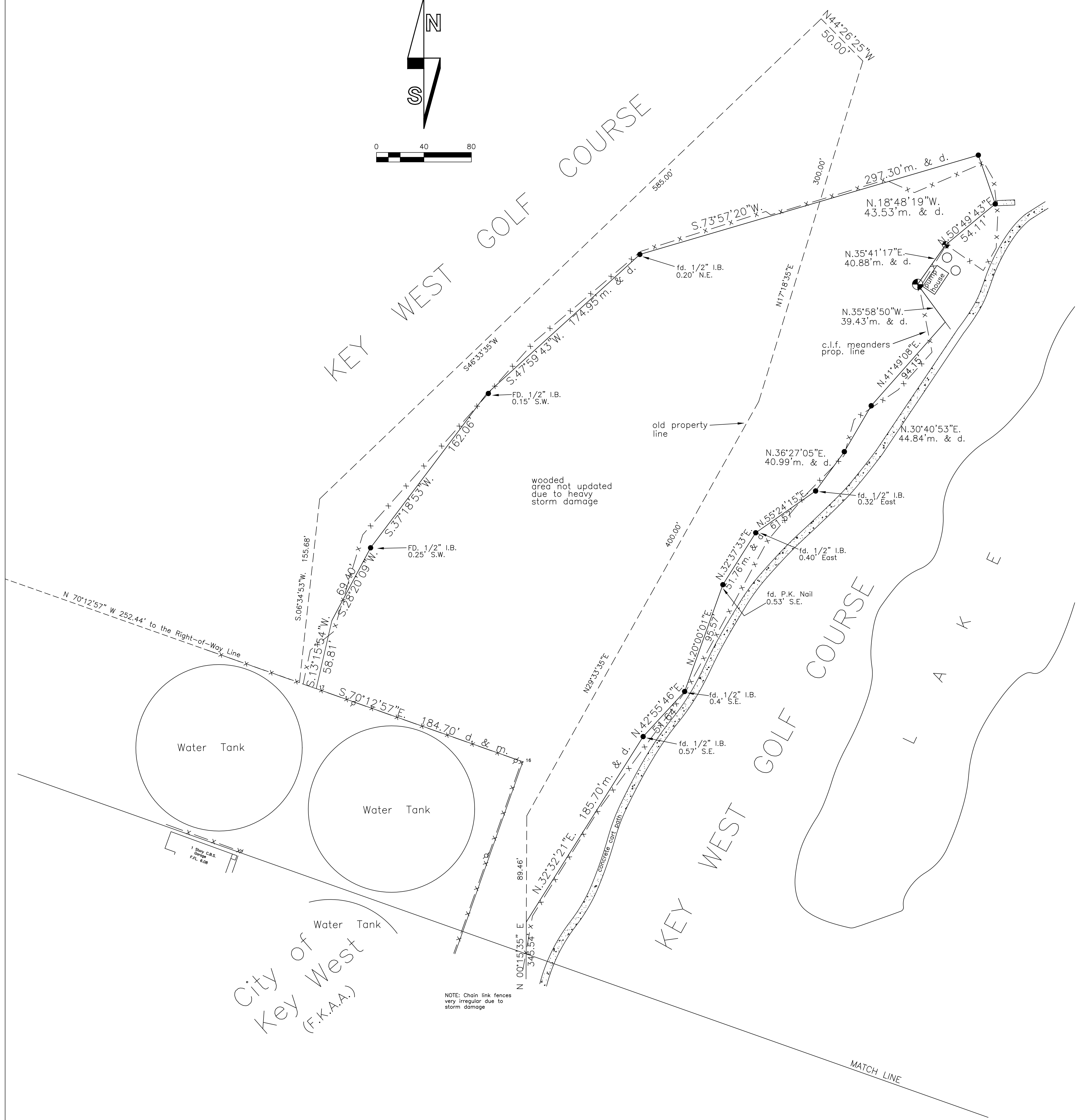
PER MONROE COUNTY APPRAISAL OFFICE
OWNERSHIP IS THE CITY OF KEY WEST

NOTE: Chain link fences
very irregular due to
storm damage

U.S. Highway No. 1



KEY WEST GOLF COURSE



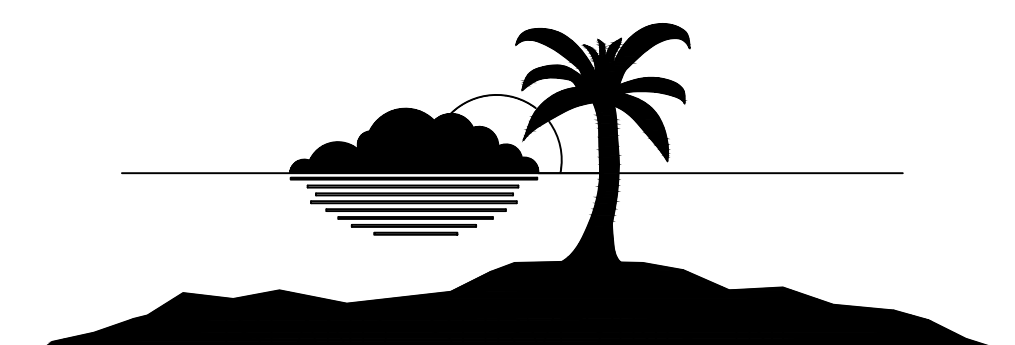
City of Key West (F.K.A.A.)

NOTE: Chain link fences very irregular due to storm damage

MATCH LINE

Sheet 3 of 3

Key West Botanical Garden
Boundary Survey
5100 College Road, Key West, FL 33040



ENGINEERS PLANNERS SURVEYORS
3152 Northside Drive Suite 201 Key West, FL 33040
(305) 293-0466 Fax: (305) 293-0237 fhildeb1@bellsouth.net L.B. No. 7700

fred\drawings\stock\island\botanicalgardens\gardens as built