

UNITED STREET IMPROVEMENTS



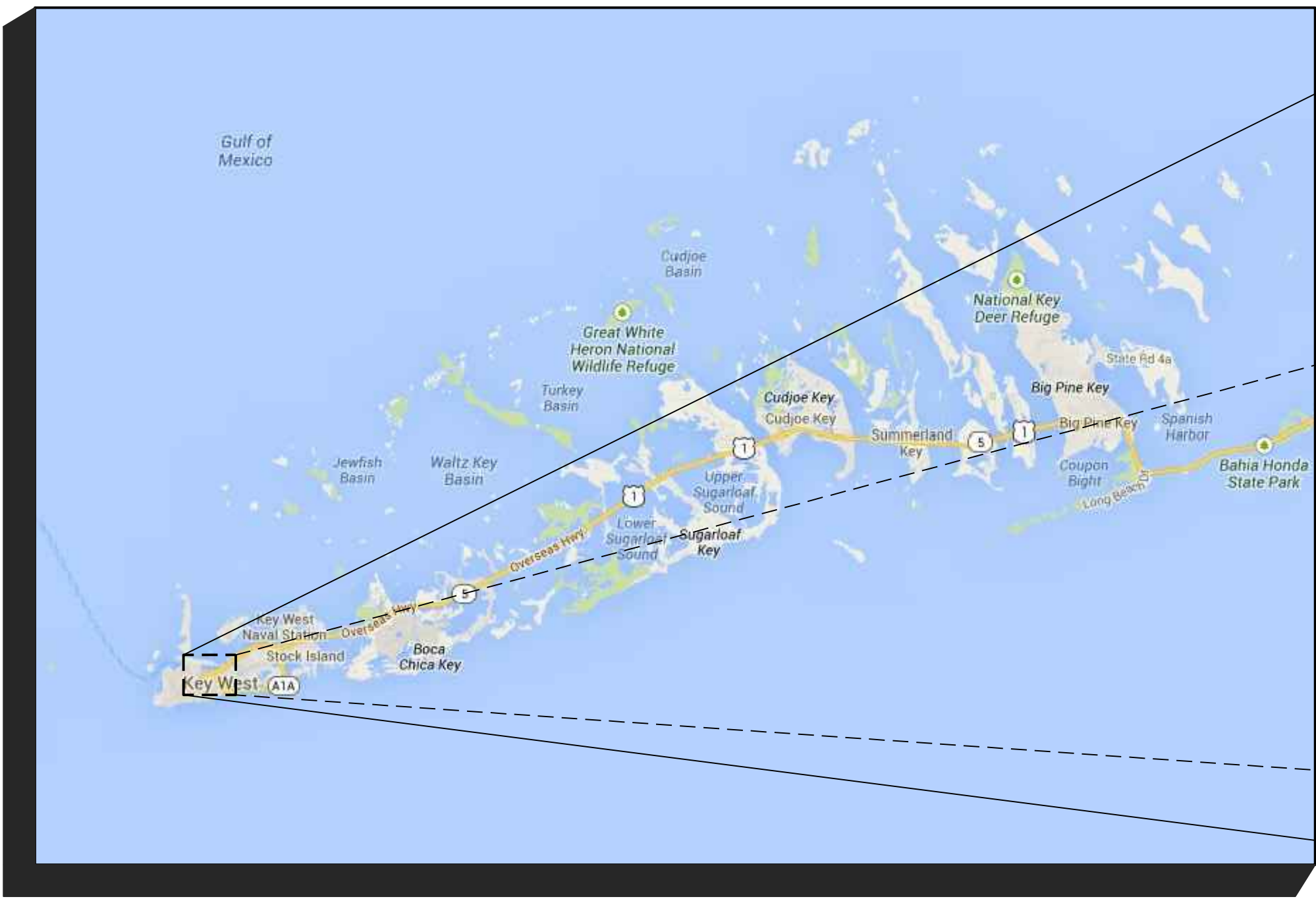
Perez Engineering & Development, Inc.
Certificate of Authorization No. 8579

Key West Office
1010 East Kennedy Drive, Suite 201
Key West, Florida 33040
Tel: (305) 293-9440 Fax: (305) 296-0243

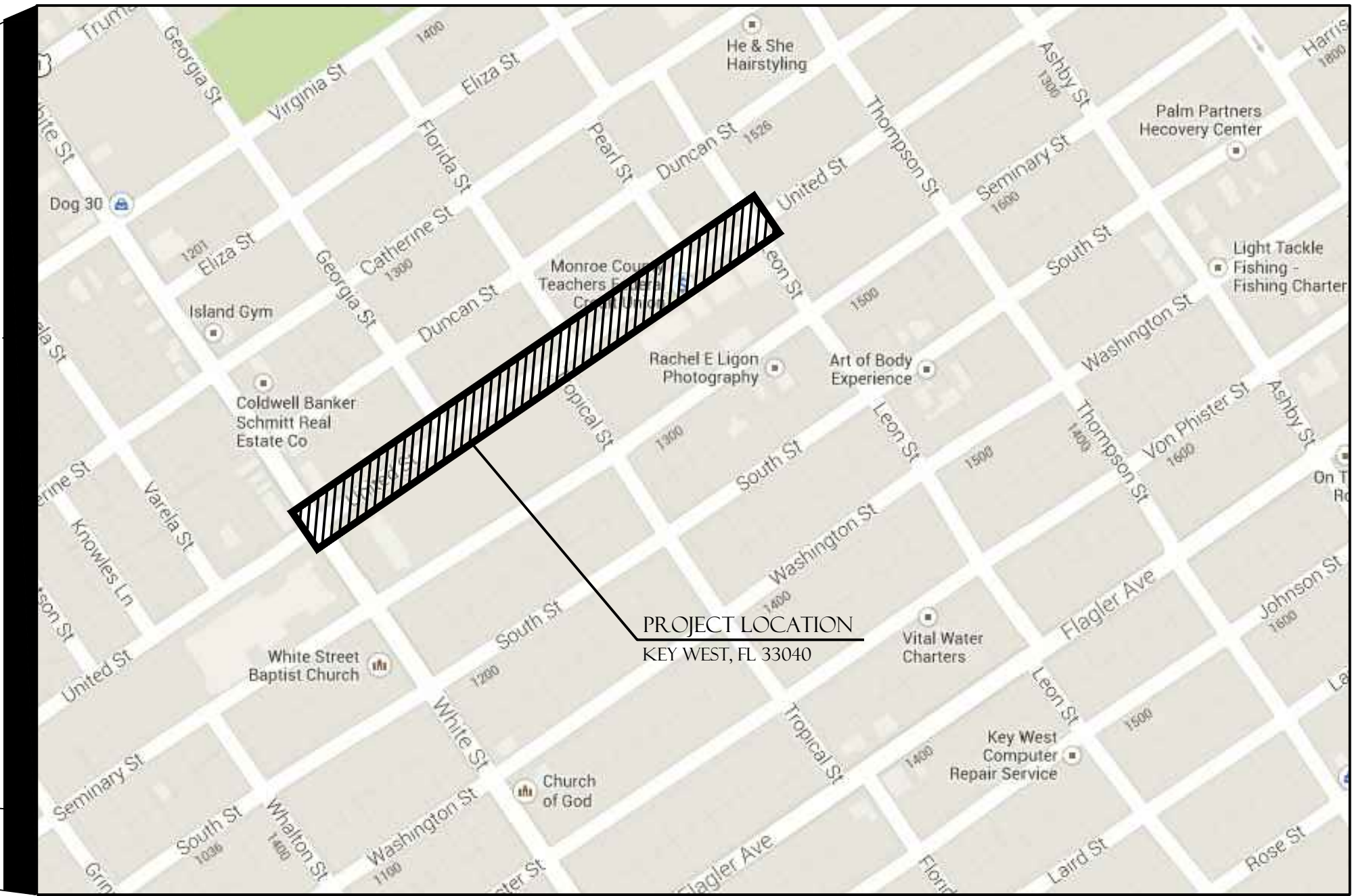
DATE: MAY 2014
PROJECT NUMBER: H1015
PROJECT NAME: UNITED ST. IMPROVEMENTS
PREPARED BY: PEREZ ENGINEERING & DEVELOPMENT
PREPARED FOR: CITY OF KEY WEST, ENGINEERING SERVICES

PLANS DESCRIPTION:

CONSTRUCTION DRAWINGS
UNITED STREET, FROM WHITE TO LEON STREETS
KEY WEST, FLORIDA 33040



VICINITY MAP
NOT TO SCALE



LOCATION MAP
NOT TO SCALE

PREPARED FOR:
CITY OF KEY WEST
P.O. BOX 1409
KEY WEST, FL 33041

SHEET LIST TABLE

SHEET NUMBER	SHEET TITLE
	CIVIL
	COVER
C-1	GENERAL NOTES
C-2	SIDEWALK PLAN
C-3	SIGNAGE AND PAVEMENT MARKING PLAN
C-4	DETAILS

REVISIONS:	DATE
1. _____	_____
2. _____	_____
3. _____	_____
4. _____	_____
5. _____	_____
6. _____	_____

CIVIL ENGINEERING • REGULATORY PERMITTING • CONSTRUCTION MANAGEMENT



Perez Engineering & Development, Inc.
Certificate of Authorization No. 8579

Key West Office
1010 East Kennedy Drive, Suite 201
Key West, Florida 33040
Tel: (305) 293-9440 Fax: (305) 296-0243

PERMIT AGENCY	PERMITS		
	TYPE	NUMBER	STATUS
_____	_____	_____	_____
_____	_____	_____	_____
_____	_____	_____	_____
_____	_____	_____	_____

ALLEN E. PEREZ, P.E. NO. 51468
(SEAL)
DATE _____

GENERAL NOTES

1.

THE CONTRACTOR SHALL REVIEW ALL DRAWINGS AND SPECIFICATIONS AND ADVISE THE ENGINEER OF ANY CONFLICTS OF REPRESENTATION BETWEEN DRAWINGS AND/OR SPECIFICATIONS PRIOR TO COMMENCING WITH CONSTRUCTION.
2.

THE CONTRACTOR SHALL FIELD-VERIFY EXISTING CONDITIONS PRIOR TO PERFORMING ANY WORK UNDER THIS CONTRACT AND NOTIFY THE ENGINEER IN WRITING OF ANY DIFFERENCES BEFORE COMMENCING WITH ANY CONSTRUCTION.
3.

HORIZONTAL COORDINATES ARE BASED ON FLORIDA STATE PLANE COORDINATE SYSTEM. VERTICAL ELEVATIONS ARE BASED ON NGVD 1929 DATUM.
4.

THE LOCATIONS, SIZES, AND ELEVATIONS OF EXISTING UTILITIES AS SHOWN ARE APPROXIMATE. THE CONTRACTOR SHALL COORDINATE WITH THE ENGINEER TO OBTAIN ANY AVAILABLE RECORD DRAWINGS AND SHALL DETERMINE THE EXACT LOCATION AND ELEVATION IN THE FIELD. THE CONTRACTOR SHALL ANTICIPATE THAT SCANNING AND EXCAVATION USING LIGHT EQUIPMENT AND HAND METHODS WILL BE NECESSARY IN AREAS NEAR EXISTING UTILITIES AND STRUCTURES TO AVOID DAMAGING THESE FACILITIES. THE CONTRACTOR SHALL CONTACT BELLSOUTH, THE LOCAL TELEPHONE COMPANY AND COMCAST, THE LOCAL CABLE TV PROVIDER TO VERIFY THE LOCATION OF BURIED TELEPHONE AND CABLE TV UTILITIES. NONE HAVE BEEN INDICATED ON THE DRAWINGS. CALL 1-800-432-4770 BEFORE DIGGING OR TRENCHING OPERATIONS BEGIN. CONTRACTOR SHALL ALSO CONTACT KEYS ENERGY TO LOCATE SECONDARY ELECTRIC LINES.
5.

THE CONTRACTOR SHALL DETERMINE THE EXACT LOCATION AND ELEVATION IN THE FIELD PRIOR TO INSTALLING ANY NEW WORK THAT CROSSES OR CONNECTS TO EXISTING UTILITY SYSTEMS. LOCATIONS OF NEW UTILITIES SHALL BE ADJUSTED IN A MANNER APPROVED BY THE ENGINEER TO AVOID CONFLICTS. DAMAGES TO UTILITIES RESULTING FROM THE CONTRACTOR'S OPERATIONS SHALL BE REPAIRED BY THE CONTRACTOR AT NO COST TO THE CLIENT.
6.

ALL EXCAVATION, TRENCHING, SHEETING, SHORING AND BRACING SHALL BE INSTALLED AS REQUIRED IN ACCORDANCE WITH LOCAL, STATE, AND FEDERAL REGULATIONS, INCLUDING OSHA (29 CFR 1926).
7.

ALL ITEMS INDICATED TO BE REMOVED OR DEMOLISHED SHALL BE REVIEWED WITH THE DEVELOPER TO DETERMINE IF THE ITEM IS TO BE PROPERTY OF THE CONTRACTOR. ALL ITMES SHALL BE REMOVED AND DISPOSED OF IN ACCORDANCE WITH ALL LOCAL, STATE, AND FEDERAL REGULATIONS, UNLESS OTHERWISE NOTED. NO SALVAGE VALUE IS EXPRESSED OR IMPLIED BY THESE CONTRACT DOCUMENTS FOR ANY ITEMS TO BE REMOVED OR DEMOLISHED.
8.

THE CONTRACTOR SHALL BE RESPONSIBLE FOR THE SECURITY OF THE CONTRACTOR'S EQUIPMENT, MATERIALS, AND PERSONNEL, AND SHALL PROVIDE ADEQUATE BARRIERS TO PREVENT RISK TO OTHERS FROM THE CONTRACTOR'S ACTIVITIES.
9.

WHERE ACTUAL DIMENSIONS AND SIZES ARE PROVIDED IN THE DRAWINGS, THEY SHALL TAKE PRECEDENCE OVER SCALED DIMENSIONS. LARGE SCALE DRAWINGS SHALL TAKE PRECEDENCE OVER SMALL SCALE DRAWINGS.
10.

THE CONTRACTOR SHALL SEQUENCE HIS OPERATIONS SUCH THAT ORANGE MESH SAFETY FENCING IS PROVIDED ALONG ALL AREAS BEING TRENCHED AND NO TRENCH IS LEFT OPEN AT THE END OF THE WORK DAY.
11.

NO CONNECTIONS FOR THE PURPOSE OF OBTAINING WATER SUPPLY DURING CONSTRUCTION SHALL BE MADE TO ANY FIRE HYDRANT OR BLOW-OFF STRUCTURE WITH OUT FIRST OBTAINING A CONSTRUCTION METER FROM THE FLORIDA KEYS AQUEDUCT AUTHORITY.
12.

IF UNSATISFACTORY MATERIAL FOR ADEQUATE BEARING IS ENCOUNTERED AT THE NORMAL SUBGRADE, THE UNSATISFACTORY MATERIAL SHALL BE REMOVED AND REPLACED WITH SUITABLE FOUNDATION STABILIZATION MATERIAL AS SPECIFIED.
13.

IN GENERAL, EXISTING STRUCTURES AND UTILITIES ARE NOTED AS EXISTING AND/OR SHOWN IN LIGHT LINE WEIGHT. NEW CONSTRUCTION IS SHOWN IN HEAVY LINE WEIGHT.
14.

ALL FIELD LAYOUT AND SURVEYING FOR CONSTRUCTION OF THIS PROJECT SHALL BE PROVIDED BY THE CONTRACTOR AT HIS EXPENSE, UNDER THE DIRECTION OF A FLORIDA LICENSED PROFESSIONAL LAND SURVEYOR.

NEW CONSTRUCTION NOTES

1.

IT IS THE CONTRACTOR'S RESPONSIBILITY DURING CONSTRUCTION OF NEW UTILITIES TO ANTICIPATE AND PLAN FOR CROSSINGS OF NEW AND EXISTING UTILITIES AND SUBSURFACE FEATURES. UTILITY LINES SHALL HAVE PRIORITIES AS FOLLOWS:

A.

GRAVITY SANITARY SEWER LINES SHALL BE CONSTRUCTED TO GRADES AS INDICATED.

B.

ANY GRAVITY UTILITY DISCOVERED TO CONFLICT WITH GRADES FOR NEW SANITARY SEWER LINES SHALL BE IMMEDIATELY BROUGHT TO THE ATTENTION OF THE ENGINEER WITH POSSIBLE SOLUTIONS FOR HORIZONTAL AND VERTICAL ADJUSTMENT.

C.

POTABLE WATER LINES, ELECTRICAL, COMMUNICATION, AND CABLE TV DISTRIBUTIONS WILL REQUIRE RELOCATION AS NECESSARY TO ACCOMMODATE NEW SANITARY SEWER LINES. THE CONTRACTOR SHALL DETERMINE, PRIOR TO INSTALLATION, THE METHOD BY WHICH THESE LINES SHALL BE REROUTED ABOVE OR BELOW NEW SANITARY SEWER LINES. THE CONTRACTOR SHALL REFER TO THE CONSTRUCTION DRAWINGS AND SPECIFICATIONS FOR SEPARATION REQUIREMENTS BETWEEN INDIVIDUAL UTILITY LINES, BOTH HORIZONTALLY AND THE CONTRACTOR SHALL INCLUDE IN THE VERTICALLY, AND SPECIAL TREATMENT REQUIREMENTS. BID PRICE ANY SPECIAL TREATMENT REQUIRED FOR UTILITY INSTALLATION, INCLUDING ADJUSTMENTS OF EXISTING UTILITIES.
2.

NEW SLABS SHALL BE GRADED TO POSITIVELY DRAIN WITHOUT ANY STORMWATER PONDING.
3.

PROVIDE CONTRACTION JOINTS AT 12' O.C. MAX. JOINT PATTERNS IN PAVEMENTS AND SIDEWALKS SHALL BE GENERALLY SQUARE. AT CURBS PROVIDE FULL DEPTH EXPANSION JOINTS AT 100 FT. O.C. MAX, AND AT LOCATIONS WHERE STRAIGHT CURB RUNS CHAGE DIRECTIONS. AT SIDEWALKS PROVIDE WEAKENED PLANE CONTRACTION JOINTS NOT MORE THAN 5'-0" MAX. AND EXPANSION JOINTS AT 20-FT. O.C. MAX (TOOL ALL EDGES). INSTALL SELF-LEVELING SEALENT AT ALL ISOLATION/ EXPANSION JOINTS.

EROSION CONTROL NOTES

1.

EROSION, SEDIMENT, AND TURBIDITY CONTROL MEASURES SHALL BE PROVIDED THROUGHOUT CONSTRUCTION. THE CONTRACTOR IS RESPONSIBLE FOR MAINTAINING AND REPAIRING ALL SLOPES AND SURFACES THROUGHOUT CONSTRUCTION AND UNTIL A STABLE SURFACE CONDITION EXISTS. THE CONTRACTOR SHALL MINIMIZE THE EXPOSED AREA AT ANY POINT DURING CONSTRUCTION AS MUCH AS PRACTICAL.
2.

FILTER FABRIC SILT FENCE SHALL BE IN CONFORMANCE WITH SECTION 985, FDOT SPECIFICATION.
3.

CONTRACTOR SHALL INSTALL EROSION CONTROLS NOTED ON DRAWINGS AND APPLICABLE PERMITS. EROSION CONTROLS SHALL BE MAINTAINED UNTIL A PERMANENT STAND OF GRASS IS PLANTED ONSITE.
4.

BALED HAY OR STRAW BARRIERS SHALL BE CONSTRUCTED AND MAINTAINED IN CONFORMANCE WITH FDOT INDEX NO. 103.
5.

SILT FENCE LOCATIONS SHOWN HEREON ARE FOR CLARITY ONLY AND SHOULD BE CONSTRUCTED WITHIN PROPERTY LINES.
6.

PROVIDE EROSION CONTROL MEASURES CONSISTING OF STAKED SILT FENCES AND HAY BALES ALONG THE PROPOSED LIMITS OF CONSTRUCTION AS INDICATED ON THE DRAWINGS. PROVIDE ADDITIONAL MEASURES AS NECESSARY TO AVOID ADVERSE IMPACTS TO JURISDICTIONAL AREAS (WETLANDS OR WATER BODIES) AND OFF-SITE LANDS AND WATERBODIES. MAINTAIN THESE MEASURED DAILY UNTIL CONSTRUCTION ACCEPTANCE BY THE OWNER AND THEN REMOVE AND LEGALLY DISPOSE OF SAID MEASURES.
7.

EROSION CONTROL SHALL MAINTAINED WITHIN CONSTRUCTION AREA BY QUICKLY STABILIZING DISTURBED AREA TO PREVENT THE RELEASE OF SEDIMENT. THIS SHALL BE ACCOMPLISHED USING GRASS COVER, HAY BALES AND OTHER MEANS ACCEPTABLE TO OWNER, ENGINEER AND REGULATORY AGENCIES.
8.

DURING CONSTRUCTION, THE CONTRACTOR SHALL, AT THE REQUEST OF THE OWNER OR AS NECESSARY MODIFY, RELOCATE THE ENVIRO-FENCE AND/OR SILT FENCE TO ALLOW FOR ACCESS AND TO COMPLETE CONSTRUCTION. IT IS THE CONTRACTOR'S RESPONSIBILITY TO MAINTAIN ADEQUATE EROSION CONTROL AT ALL TIMES.
9.

DURING CONSTRUCTION, THE CONTRACTOR WILL PROVIDE TEMPORARY SEEDING AND MULCHING FOR AREA THAT HAVE BEEN CLEARED AND NOT REWORKED WITHIN 7 CALENDAR DAYS DURING THE WET SEASON (APRIL THROUGH SEPTEMBER AND 14 CALENDAR DAYS DURING THE DRY SEASON (OCTOBER THROUGH MARCH). ALSO, ALL SIDE SLOPES SHALL BE SODDED OR SEEDED AND MULCHED WITHIN 7 DAYS DURING WET SEASON AND 14 DAYS DURING THE DRY SEASON.
10.

ALL SURFACE WATER DISCHARGE FROM SITE, INCLUDING DEWATERING DISCHARGE SHALL MEET STATE WATER QUALITY STANDARDS (LESS THAN 29 NTU ABOVE BACKGROUND) PRIOR TO REACHING ANY WATERS OF THE STATE INCLUDING WETLAND.
11.

IN THE EVENT THAT THE EROSION PREVENTION AND CONTROL DEVICES SHOWN IN THESE PLANS PROVE NOT TO BE EFFECTIVE. ALTERNATE METHODS FOR MAINTAINING STATE WATER QUALITY STANDARDS FOR DISCHARGE FROM THE CONSTRUCTION SITE WILL BE REQUIRED. ANY ALTERNATE EROSION PREVENTION AND CONTROL DEVICES MUST BE APPROVED BY MONROE COUNTY AND SFWMD COMPLIANCE PERSONNEL PRIOR TO PLACEMENT.

LEGEND

GENERAL

- RIGHT-OF-WAY AND/ OR PROPERTY LINE

TL 1500

TAX LOT NUMBER

CONTRACTOR'S SURVEY REFERENCE

KEY NOTE MARKER

(ON SITE PLAN) # OF PARKING SPACES
- DETAIL

SECTION

ELEVATION

DETAIL/SECTION TITLE

DETAIL OR SECTION DESIGNATION
(USE NUMBERS FOR
DETAILS/ELEVATIONS AND LETTERS
FOR SECTIONS)

SHEET ON WHICH DETAIL/
SECTION/ELEVATION IS DRAWN

DETAIL REFERENCE BUBBLE

3

DETAIL TITLE BUBBLE
SINGLE REFERENCE

3

SAMPLE DETAIL

SCALE: NTS

BUBBLE SYMBOLS

CIVIL ENGINEERING • REGULATORY PERMITTING • CONSTRUCTION MANAGEMENT

PEREZ ENGINEERING

& DEVELOPMENT, INC

1010 EAST KENNEDY DRIVE, SUITE 201
KEY WEST, FLORIDA 33040
TEL: (305) 293-9440 FAX: (305) 296-0243

ALLEN E. PEREZ P.E.
Florida P.E. NO. 51468
May 19, 2014

ORIGINAL: FEBRUARY 2014

REVISIONS:

1

2

3

4

5

6

UNITED STREET IMPROVEMENTS

P.O. BOX 1409

KEY WEST, FL 33040

CITY OF KEY WEST

GENERAL NOTES

JOB NO. 141015

DRAWN BGO

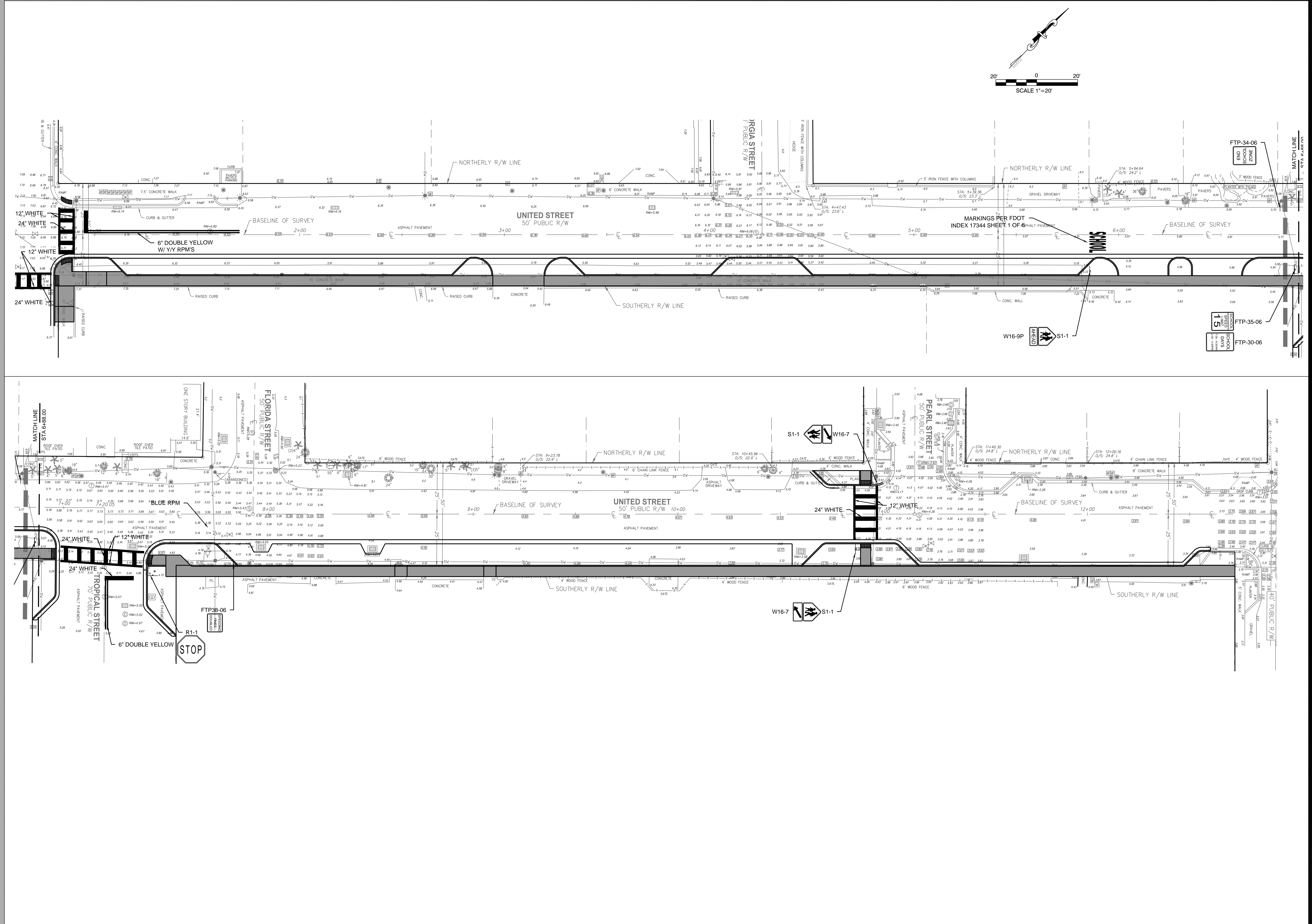
DESIGNED AEP

CHECKED AEP


QC

SHEET

C-1



CIVIL ENGINEERING • REGULATORY PERMITTING • CONSTRUCTION MANAGEMENT

**PEREZ ENGINEERING & DEVELOPMENT, INC.**

KEY WEST OFFICE
1010 EAST KENNEDY DRIVE, SUITE 201
KEY WEST, FLORIDA 33040
TEL: (305) 295-9440 FAX: (305) 296-0243

ALLEN E. PEREZ, P.E.
Florida P.E. NO. 51688
May 19, 2014

REVISIONS:
1
2
3
4
5
6

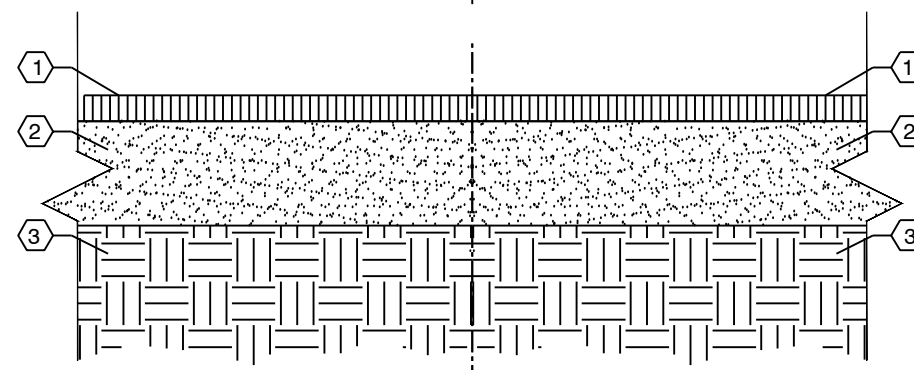
ORIGINAL: FEBRUARY 2014

CITY OF KEY WEST
P.O. BOX 1409
KEY WEST, 33041

UNITED STREET IMPROVEMENTS
KEY WEST, FL 33040
SIGNAGE & PAVEMENT MARKING PLAN

JOB NO. 141015
DRAWN BGO
DESIGNED AEP
CHECKED AEP
QC
SHEET

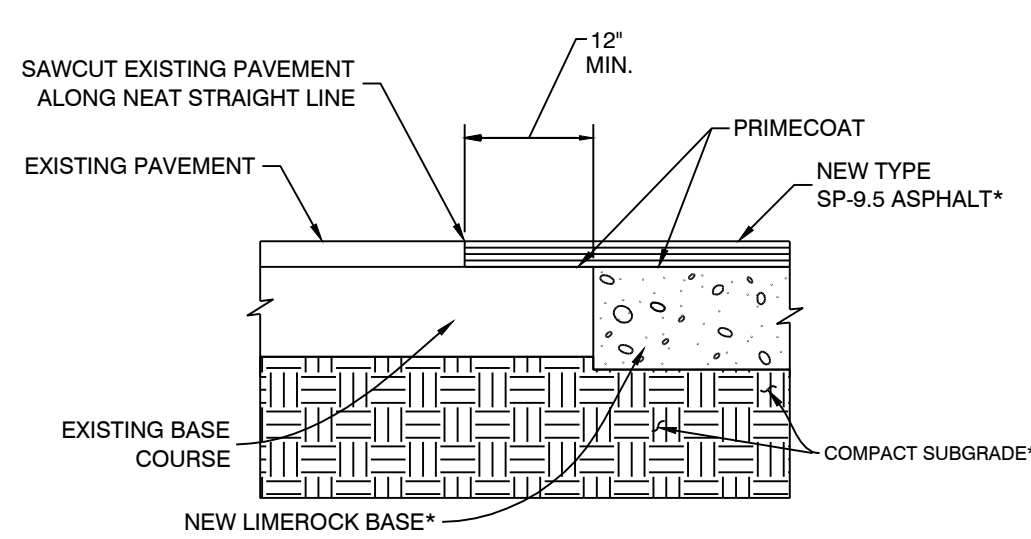
C-3



- KEYED NOTES**
- 2.5" SP-9.5 STRUCTURAL COURSE OVER PRIME COAT
 - 10" MIN LIMEROCK BASECOURSE COMPACTED TO 98% ASTM D-1557
 - 12" SUBGRADE COMPACTED TO 95% OF ASTM D-1557.

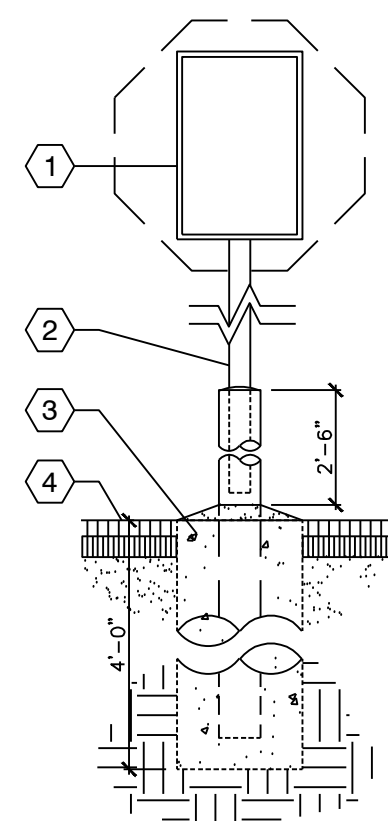
NOTE:
PAVEMENT TO BE BUILT IN COMPLIANCE WITH FDOT STANDARDS AND SPECIFICATIONS.

1 Asphalt Pavement Detail
NTS



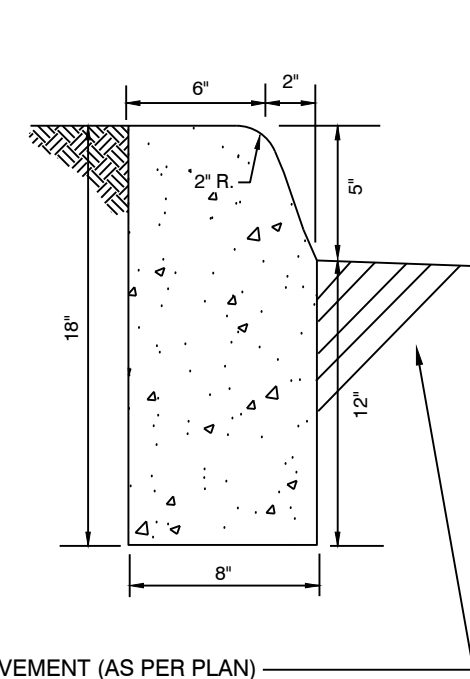
*NOTE:
FOR MATERIAL DEPTHS AND TESTING REQUIREMENTS OF NEW ASPHALT CONSTRUCTION, PLEASE REFER TO CIVIL DETAIL # 1

2 Pavement Connection to Existing Surface
NTS

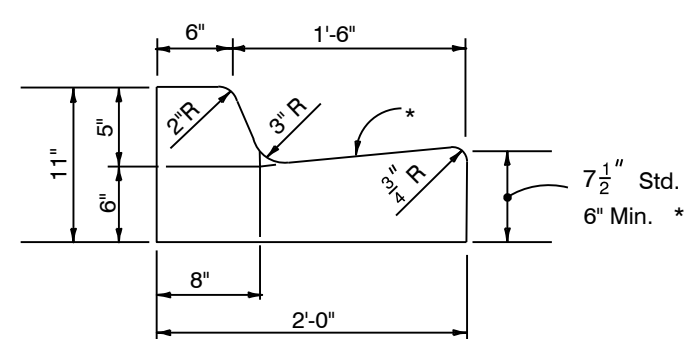


- KEYED NOTES**
- TRAFFIC DIRECTIONAL SIGN.
 - 2" x 2" STEEL TUBE EXTENDED INTO CONCRETE FILLED 4" PIPE.
 - 12" DIA. CONCRETE FOUNDATION (4" MINIMUM BELOW FIN. GRADE)
 - FINISHED GRADE.

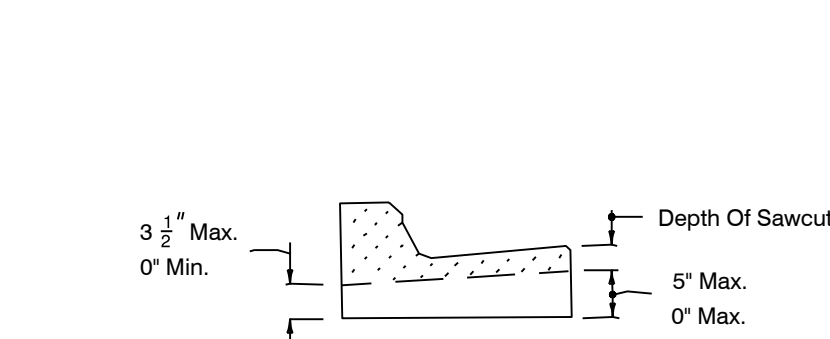
3 Traffic Directional Sign (Freestanding)
NTS



4 Concrete Curb
NTS



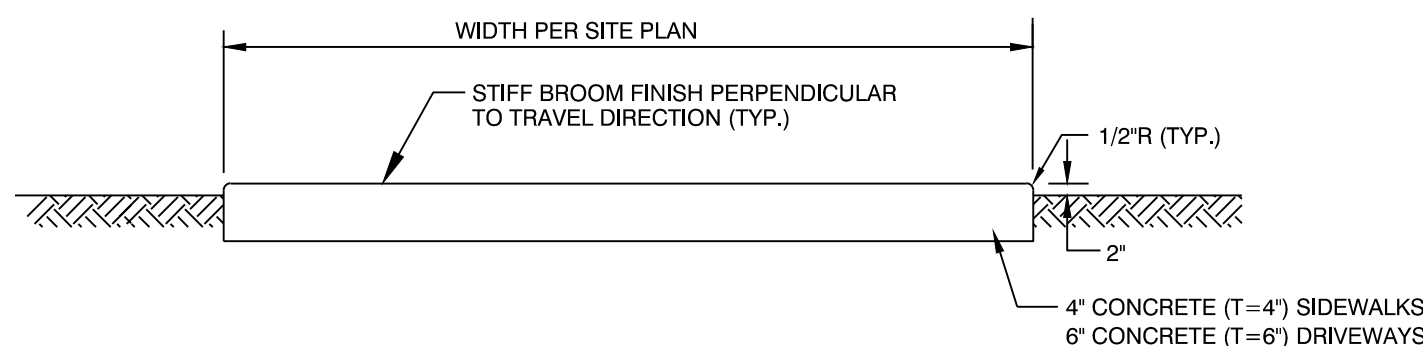
CONCRETE CURB AND GUTTER



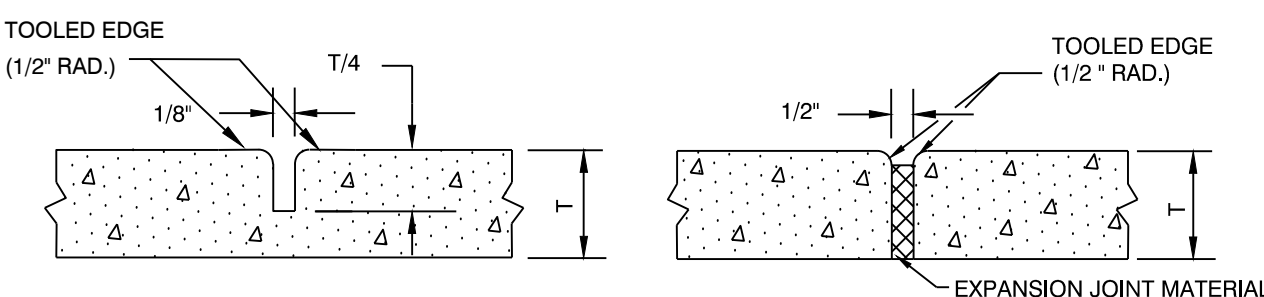
CONTRACTION JOINT IN CURB AND GUTTER

GENERAL NOTES

- For curb, gutter, and curb and gutter provide $\frac{1}{8}$ " - $\frac{1}{4}$ " contraction joints at 10' centers (max.). Contraction joints adjacent to concrete pavement on tangents and flat curves are to match the pavement joints, with intermediate joints not to exceed 10' centers. Curb, gutter and curb & gutter expansion joints shall be located in accordance with FDOT Section 520 of the standard specifications.



TYPICAL SIDEWALK SECTION



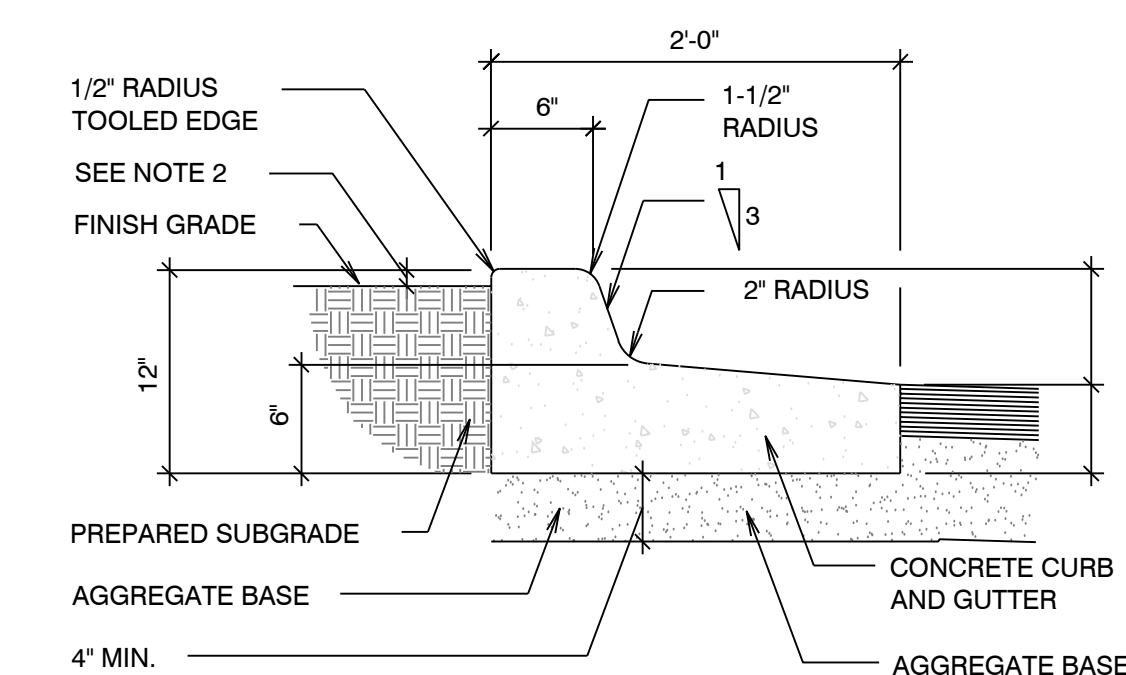
CONTRACTION JOINT

EXPANSION JOINT

NOTES:

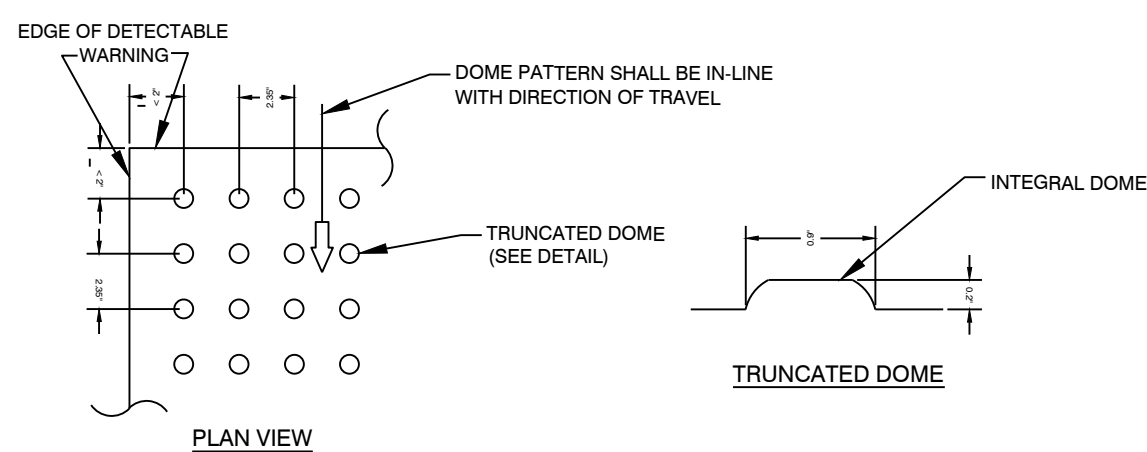
- PROVIDE EXPANSION JOINTS WHERE NEW SIDEWALKS ABUT STRUCTURES AND CONTRACTION JOINTS AT INTERVALS EQUAL TO SIDEWALK WIDTH.
- REPLACE CONCRETE SIDEWALKS AT SCORED JOINTS TO AVOID A PATCHED APPEARANCE. PROVIDE A 2" LEVELING COURSE BENEATH NEW SIDEWALK.

6 Typical Sidewalk Detail
NTS



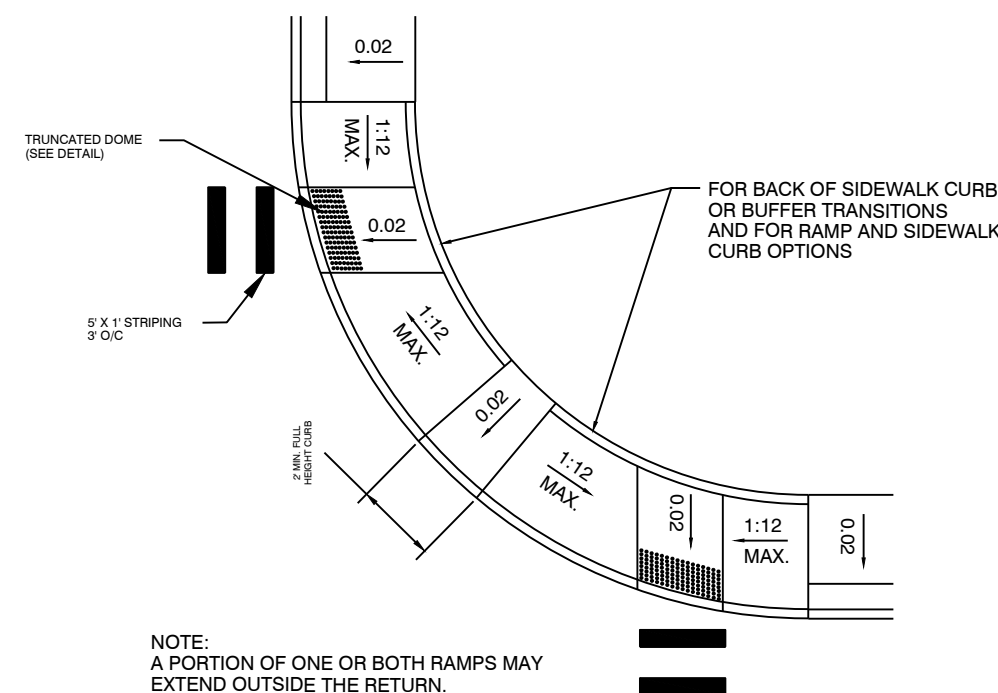
FOR USE WHERE WATER DRAINS AWAY FROM CURB

7 Modified Curb & Gutter Detail
NTS



ALL SIDEWALK CURB RAMPS SHALL HAVE DETECTABLE WARNING SURFACES THAT EXTEND THE FULL WIDTH OF THE RAMP AND IN THE DIRECTION OF TRAVEL 24 INCHES (610 mm) FROM THE BACK OF CURB.

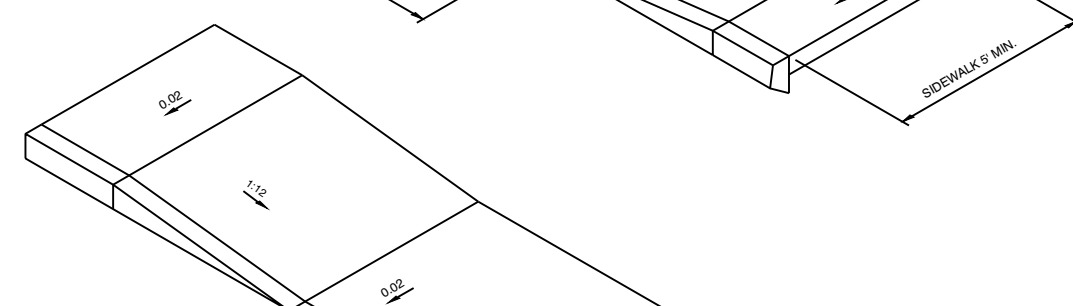
CURB RAMP DETECTABLE WARNING
NTS



TYPICAL PLACEMENT OF SIDEWALK CURB RAMPS AT CURBED RETURNS
NTS

8 Sidewalk Transition Detail
NTS

TYPICAL CURB RAMP
NTS



TYPICAL S/W TO DRIVEWAY TRANSITION
NTS

GENERAL NOTE:

- CURB RAMP RUNNING SLOPES AT UNRESTRAINED SITES SHALL NOT BE STEEPER THAN 1:12 AND CROSS SLOPE SHALL BE 0.02 OR FLATTER. TRANSITION SLOPES SHALL NOT BE STEEPER THAN 1:12.

- CURB RAMP DETECTABLE WARNING SURFACES SHALL EXTEND THE FULL WIDTH OF THE RAMP AND IN THE DIRECTION OF TRAVEL 24" FROM THE BACK OF CURB. DETECTABLE WARNING SURFACES SHALL BE CONSTRUCTED BY TEXTURING A TRUNCATED DOME PATTERN IN CONFORMANCE WITH U.S. DEPARTMENT OF JUSTICE A.D.A. STANDARDS FOR ACCESSIBLE DESIGN, A.D.A. ACCESSIBILITY GUIDELINES, SECTION 4.29.2. TRANSITION SLOPES ARE NOT TO HAVE DETECTABLE WARNINGS.

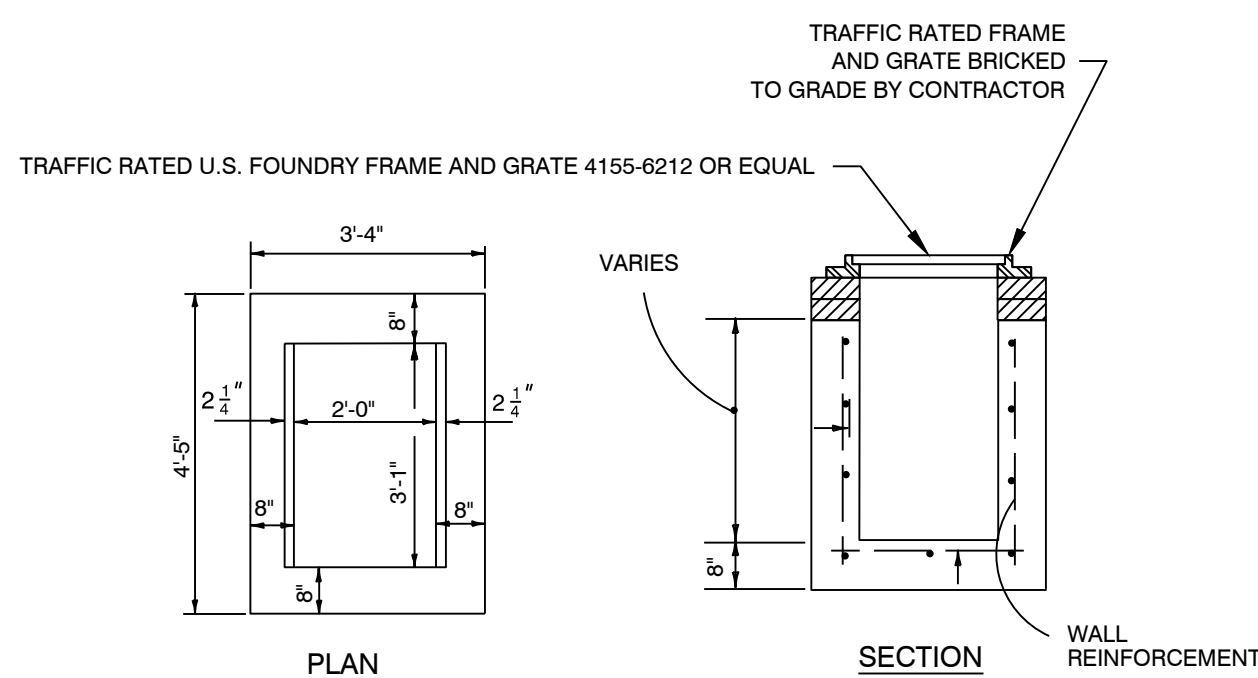
- UNLESS OTHERWISE CALLED OUT IN THE PLANS, THE RAMP DETECTABLE WARNING SURFACE SHALL BE COLORED IN ACCORDANCE WITH FDOT SECTION 351 OF THE STANDARD SPECIFICATIONS.

- WHERE A CURB RAMP IS CONSTRUCTED WITHIN EXISTING CURB, CURB AND GUTTER AND/OR SIDEWALK, THE EXISTING CURB OR CURB AND GUTTER SHALL BE REMOVED TO THE NEAREST JOINT BEYOND THE CURB TRANSITIONS OR TO THE EXTENT THAT NO REMAINING SECTION OF CURB OR CURB AND GUTTER IS LESS THAN 6' LONG. THE EXISTING SIDEWALK SHALL BE REMOVED TO THE NEAREST JOINT BEYOND THE TRANSITION SLOPE OR WALK AROUND OR TO THE EXTENT THAT NO REMAINING SECTION OF SIDEWALK IS LESS THAN 6' LONG.

DESIGN NOTE:

- THE COLOR REQUIREMENT IN GENERAL NOTE 3 IS TO PROVIDE A DARK-ON-LIGHT VISUAL CONTRAST BETWEEN THE DETECTABLE WARNING SURFACE AND THE ADJACENT WALKING SURFACE. WHERE ADJACENT WALKING SURFACES ARE COLORED OR ARE CONSTRUCTED WITH MATERIALS OTHER THAN STANDARD CLASS I PORTLAND CEMENT CONCRETE IN ACCORDANCE WITH SECTION 522 OF THE STANDARD SPECIFICATIONS, THE PLANS MUST PROVIDE FOR DETECTABLE WARNING SURFACE COLOR OR MATERIALS THAT PROVIDE THE NECESSARY CONTRAST, EITHER DARK-ON-LIGHT OR LIGHT-ON-DARK.

9 Type "C" Ditch Bottom Inlet
NTS



NOTES:

- CONCRETE SHALL BE 4000 PSI AT 28 DAYS, TYPE II CEMENT
- ALL REINFORCEMENT MAY BE WELDED WIRE AS PER ASTM C-478, #4 @ 12" O.C.E.W.
- FRAME AND GRATE BRICKED TO GRADE BY CONTRACTOR.
- BOTTOM INLETS SHALL BE USP PRODUCT NO. 3-3 OR EQUAL.
- STRUCTURES TO BE SET ON COARSE AGGREGATE BEDDING