

**Overseas Highway (US1) & MM5
Temporary Diversion**

- Legend**
- Cone
 - Lane Identification + Direction of Traffic
 - Law Enforcement Officer



**Tri-Key West Triathlon
Overseas Hwy (US1) & MM5
Temp. Diversion Connection
MOT Plan PHASE B**

MOT DRAWING BY:
Ariel Garces
ATSSA Certificate # 240741
ALL AMERICAN BARRICADES
WWW.BARRICADES.COM
305-685-6124

Note:
Typical Drawing as per MUTCD standards.
Drawing not to scale.
All American Barricades does not warrant
the accuracy of the information.
The setup should be handled by personnel
that have been certified to handle this type
of traffic control setup.

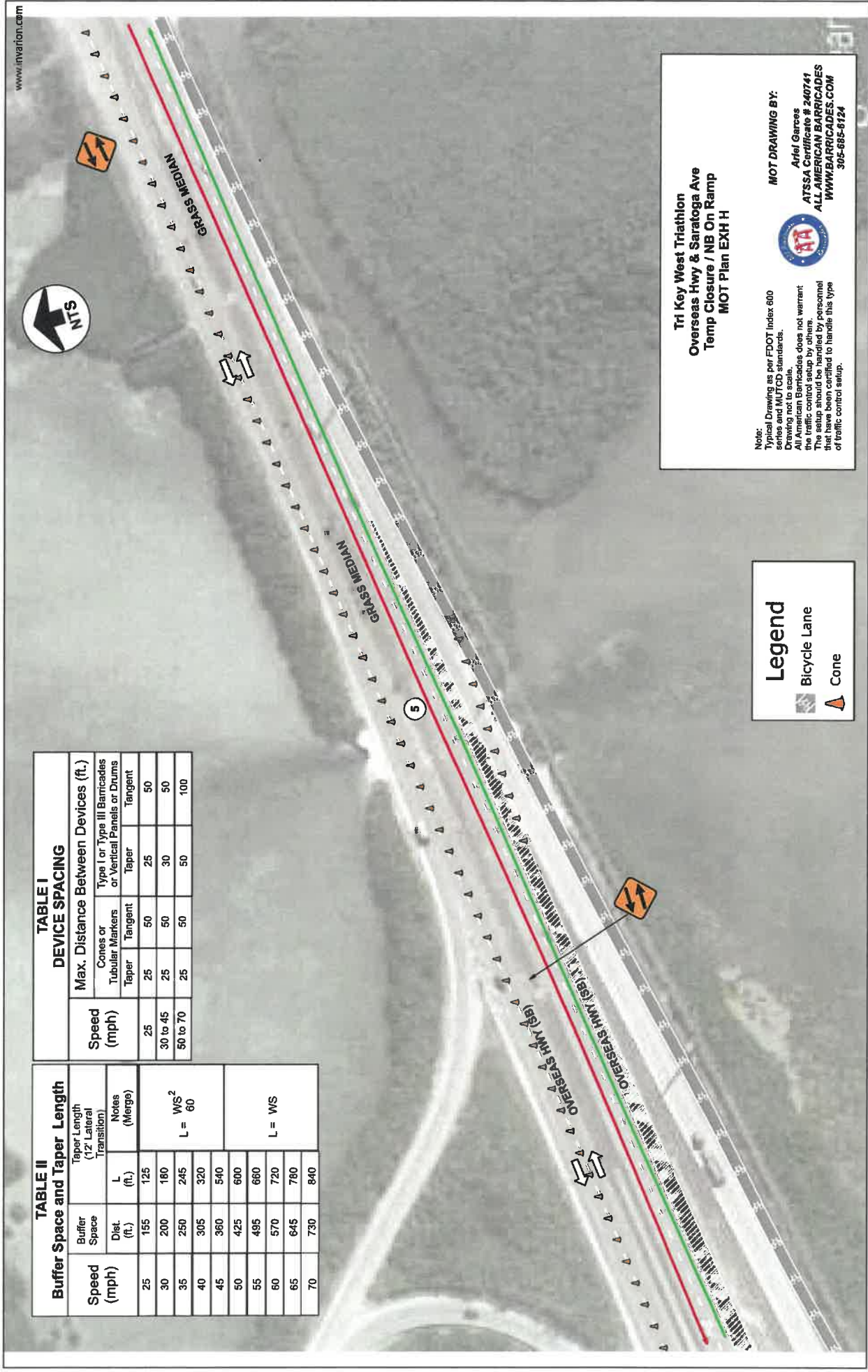


**TABLE I
DEVICE SPACING**

Speed (mph)	Max. Distance Between Devices (ft.)			
	Cones or Tubular Markers		Type I or Type III Barricades or Vertical Panels or Drums	
	Taper	Tangent	Taper	Tangent
25	25	50	25	50
30 to 45	25	50	30	50
50 to 70	25	50	50	100

**TABLE II
Buffer Space and Taper Length**

Speed (mph)	Buffer Space (ft.)	Taper Length (12' Lateral Transition)		Notes (Merge)
		L (ft.)	L (ft.)	
25	155	125		L = WS ² L = 60
30	200	180		
35	250	245		L = WS
40	305	320		
45	360	540		
50	425	600		
55	495	680		
60	570	720		
65	645	780		
70	730	840		



**Tri Key West Triathlon
Overseas Hwy & Saratoga Ave
Temp Closure / NB On Ramp
MOT Plan EXH H**

Notes:
Typical Drawing as per FDOT Index 600 series and MUTCD standards.
Drawing not to scale.
All American Barricades does not warrant the traffic control setup by others.
The setup should be handled by personnel that have been certified to handle this type of traffic control setup.

MOT DRAWING BY:
Ariel Garces
ATSSA Certificate # 240741
ALL.AMERICAN.BARRICADES
WWW.BARRICADES.COM
305-685-8124

Legend

- Bicycle Lane
- Cone



S. Roosevelt Blvd.
S. of Seaside @
Ocean Walk

BIKE ROUTE
3 LANES

CARS

SB S. ROOSEVELT BLVD.

SEASIDE



Tri-Key West Triathlon
S. Roosevelt S/O Seaside
@ Ocean Walk
Left Lane Closure
MOT Plan PHASE E

Note: Typical Drawing as per MUTCD standards.
Drawing not to scale.
American Barricades does not warrant
the traffic control setup.
The setup should be handled by personnel
that have been certified to handle this type
of traffic control setup.

MOT DRAWING BY:



Ariel Garces
ATSSA Certificate # 240741
ALL AMERICAN BARRICADES
WWW.BARRICADES.COM
305-685-6124

Legend

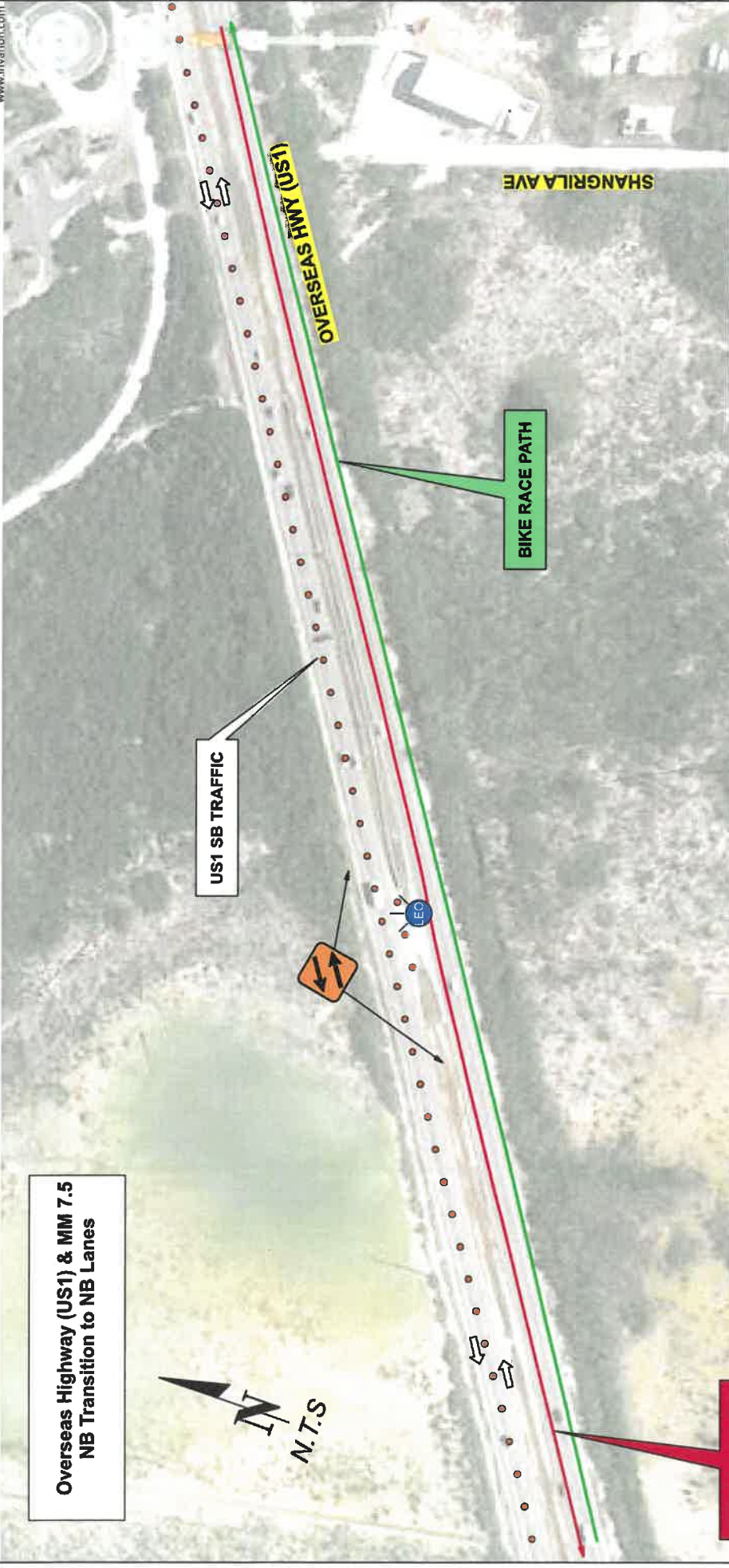


Cone



Lane Identification + Direction of Traffic

**Overseas Highway (US1) & MM 7.5
NB Transition to NB Lanes**



US1 SB TRAFFIC

BIKE RACE PATH

BIKE RACE PATH

SHANGRILA AVE

OVERSEAS HWY (US1)

**Tri-Key West Triathlon
Overseas Hwy (US1) & MM 7.5
Temp. Diversion Connection
MOT Plan PHASE A**

MOT DRAWING BY:
Ariel Garces
ATSSA Certificate # 240741
ALL AMERICAN BARRICADES
WWW.AMBARRICADES.COM
305-665-6124

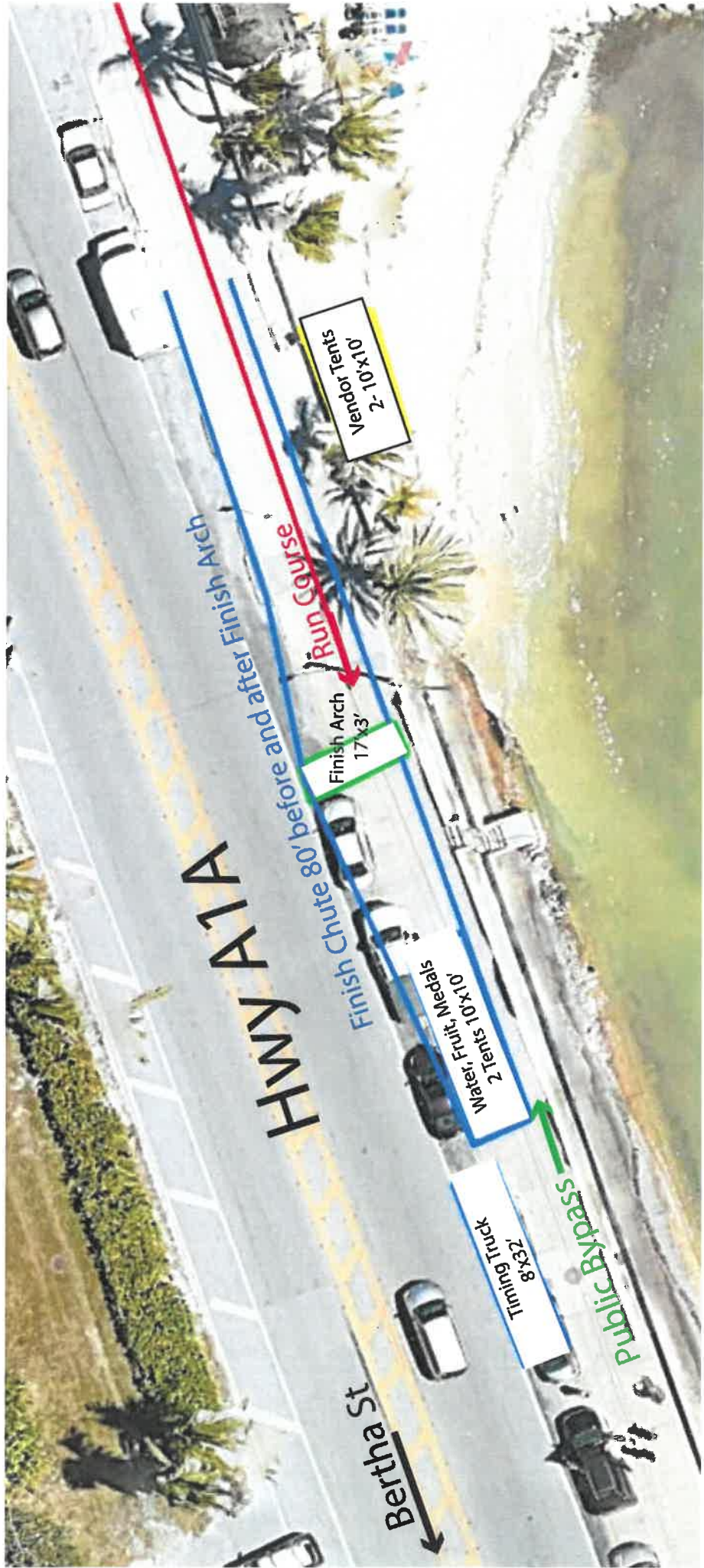
Note:
Typical Drawing as per MUTCD standards.
Drawing not to scale.
All American Barricades does not warrant
the setup should be handled by personnel
that have been certified to handle this type
of traffic control setup.

**Table 1
Device Spacing**

Speed (mph)	Max. Distance Between Devices (ft.)		Type I or Type II Barricades or Vertical Panels or Drums	
	Cones or Tubular Markers	Taper	Taper	Tangent
25	25	50	25	50
30 to 45	25	50	30	50
50 to 75	25	50	50	100

Legend

- Cones
- Law Enforcement Officer
- Lane Identification + Direction of Traffic



2-10x10
Main Tents

Run Course

Finish Course 80 before and after Finish Arch

Finish Arch
17x3'

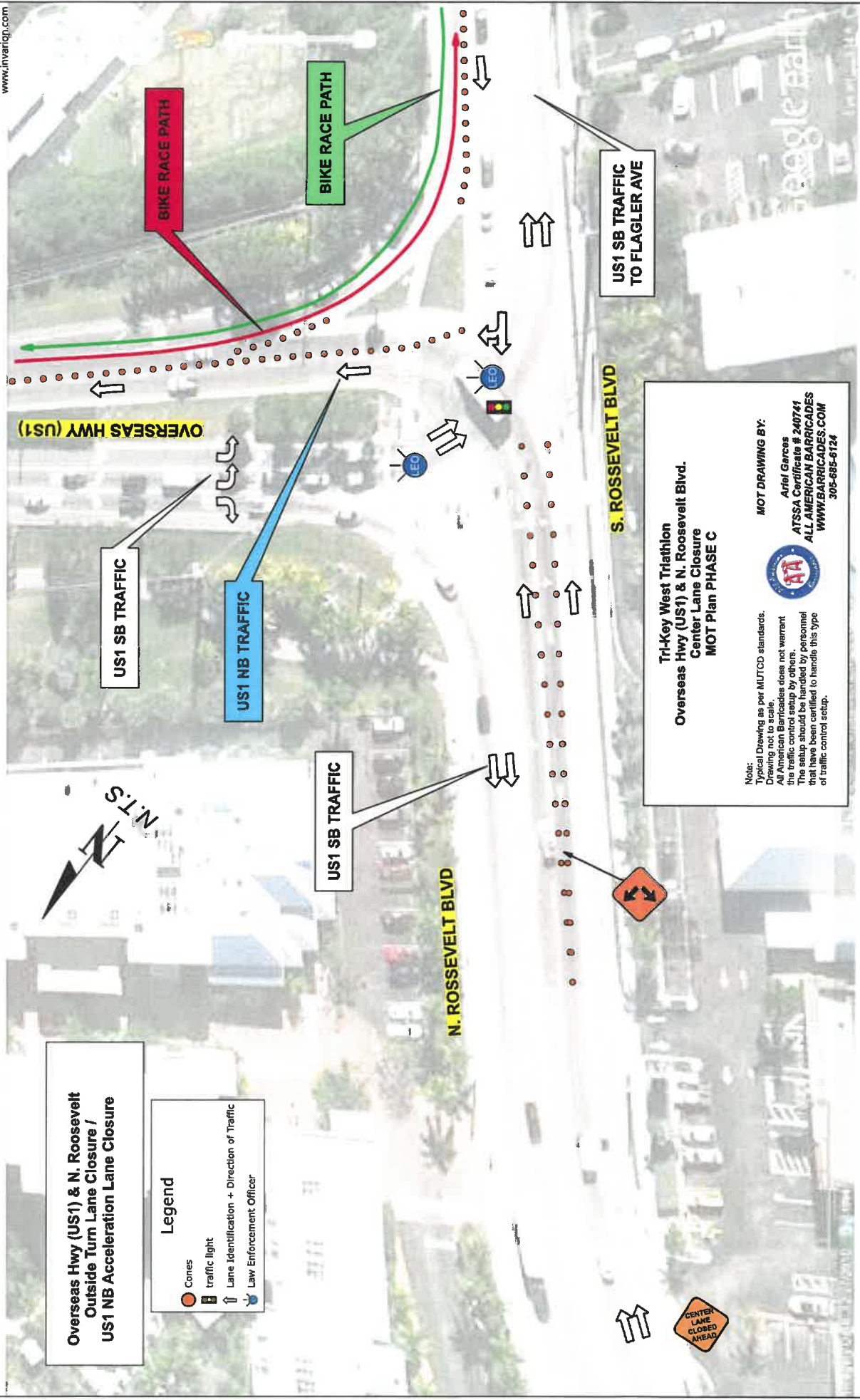
2 Tents 10x10
Water, Fruit, Medals

Timing Truck
8x32'

Timing Course

HWY A11A

Bertha St



**Overseas Hwy (US1) & N. Roosevelt
Outside Turn Lane Closure /
US1 NB Acceleration Lane Closure**

Legend

- Cones
- traffic light
- Lane Identification + Direction of Traffic
- Law Enforcement Officer

**Tri-Key West Triathlon
Overseas Hwy (US1) & N. Roosevelt Blvd.
Center Lane Closure
MOT Plan PHASE C**

MOT DRAWING BY:
Artel Garosa
ATSSA Certificate # 240741
ALL AMERICAN BARRICADES
WWW.BARRICADES.COM
305-685-6124

Note:
Typical Drawing as per MUTCD standards.
Drawing not to scale.
All American Barricades does not warrant
the traffic control setup by others.
The setup should be handled by personnel
that have been certified to handle this type
of traffic control setup.



N. ROSSEVELT BLVD

S. ROSSEVELT BLVD

OVERSEAS HWY (US1)

US1 SB TRAFFIC

US1 NB TRAFFIC

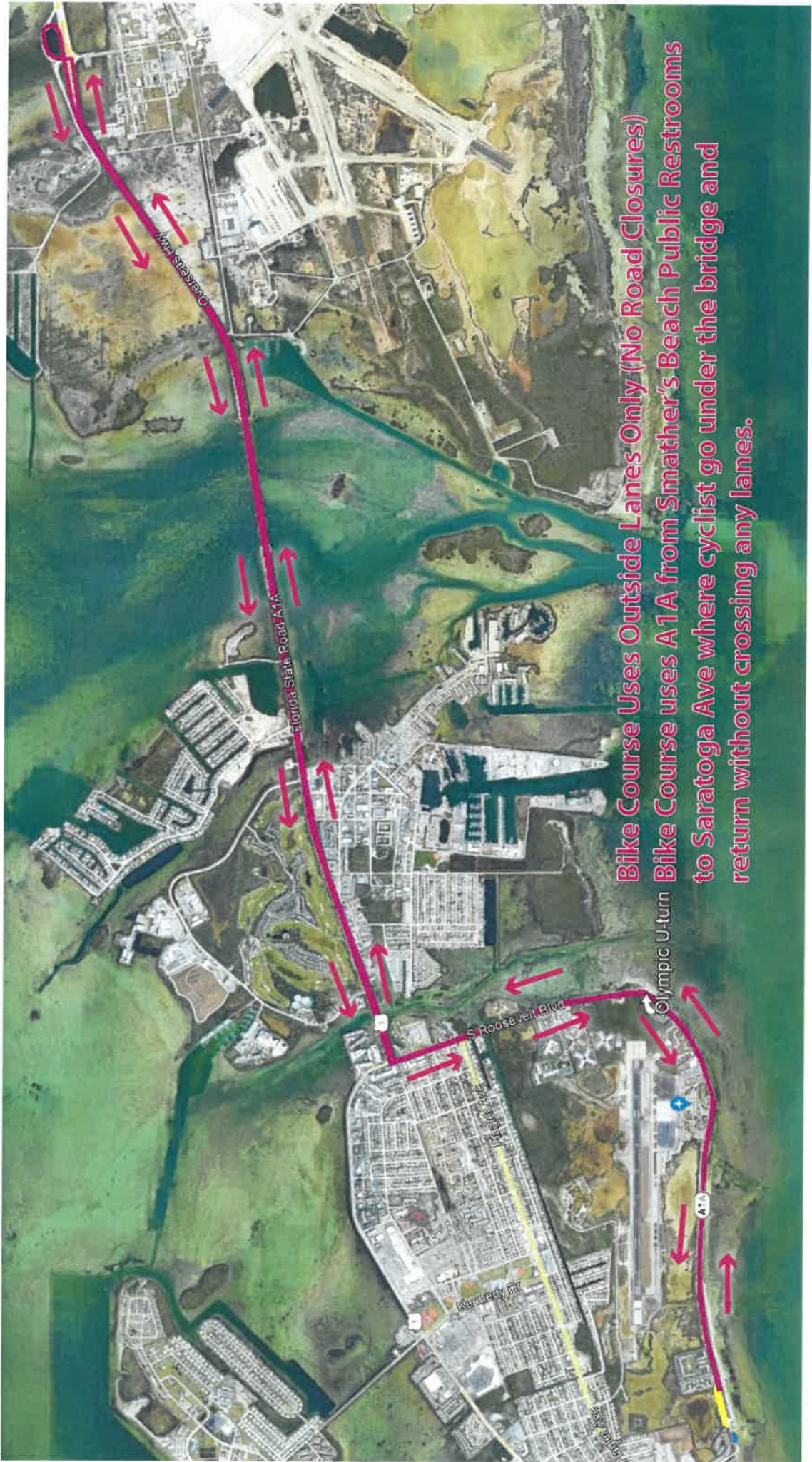
US1 SB TRAFFIC

**US1 SB TRAFFIC
TO FLAGLER AVE**

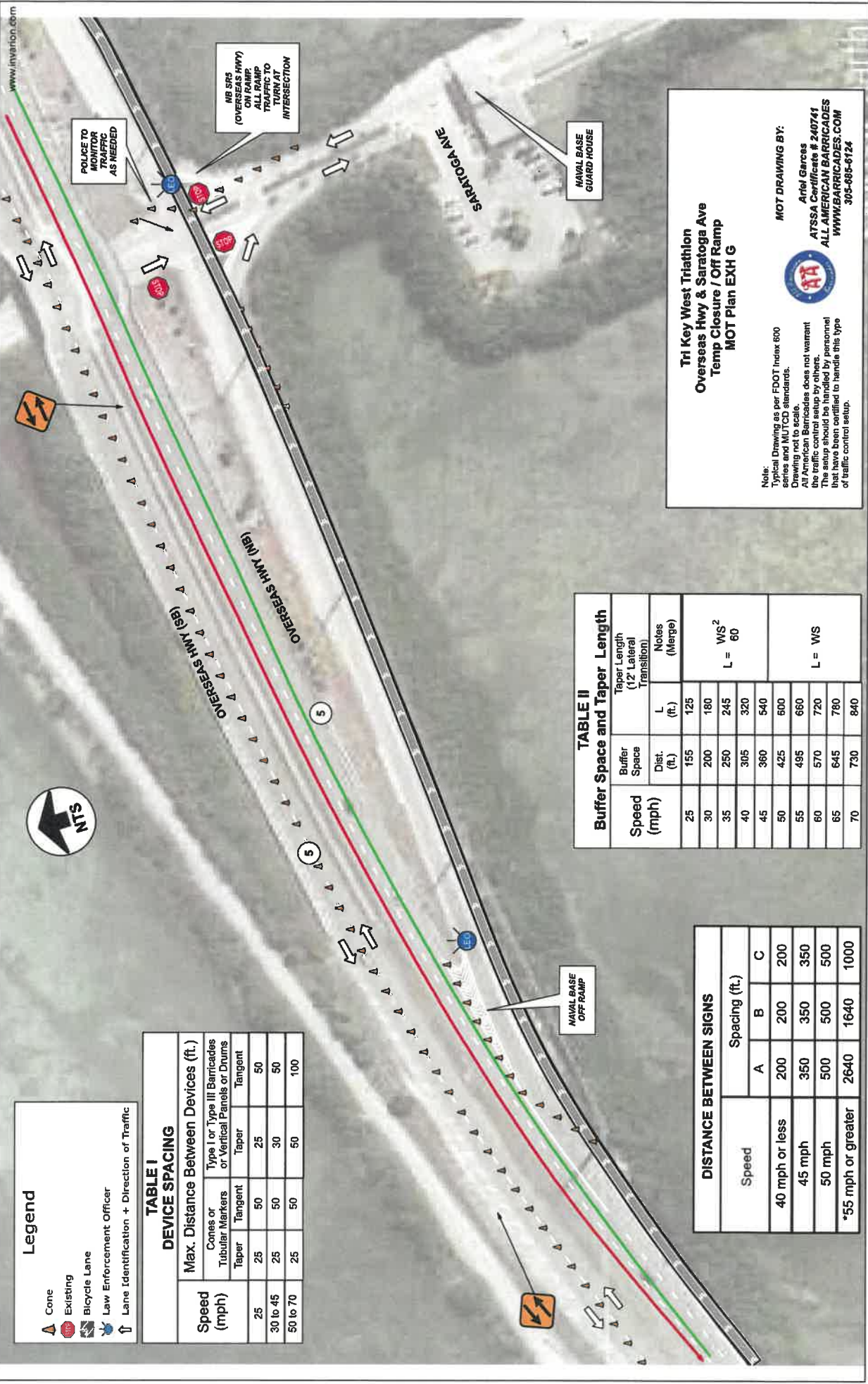
BIKE RACE PATH

BIKE RACE PATH





Bike Course Uses Outside Lanes Only (No Road Closures)
Bike Course uses A1A from Smather's Beach Public Restrooms to Saratoga Ave where cyclist go under the bridge and return without crossing any lanes.



Legend

- Cone
- Existing
- Bicycle Lane
- Law Enforcement Officer
- Lane Identification + Direction of Traffic

TABLE I
DEVICE SPACING
Max. Distance Between Devices (ft.)

Speed (mph)	Type I or Type III Barricades or Vertical Panels or Drums	
	Tangent	Tangent
25	25	50
30 to 45	25	50
50 to 70	25	100

TABLE II
Buffer Space and Taper Length

Speed (mph)	Buffer Space Dist. (ft.)	Taper Length (12' Lateral Transition)	
		L	Notes (Merge)
25	155	125	WS ² L = 60
30	200	180	
35	250	245	L = WS
40	305	320	
45	360	400	
50	425	500	
55	495	660	
60	570	720	
65	645	780	
70	730	840	

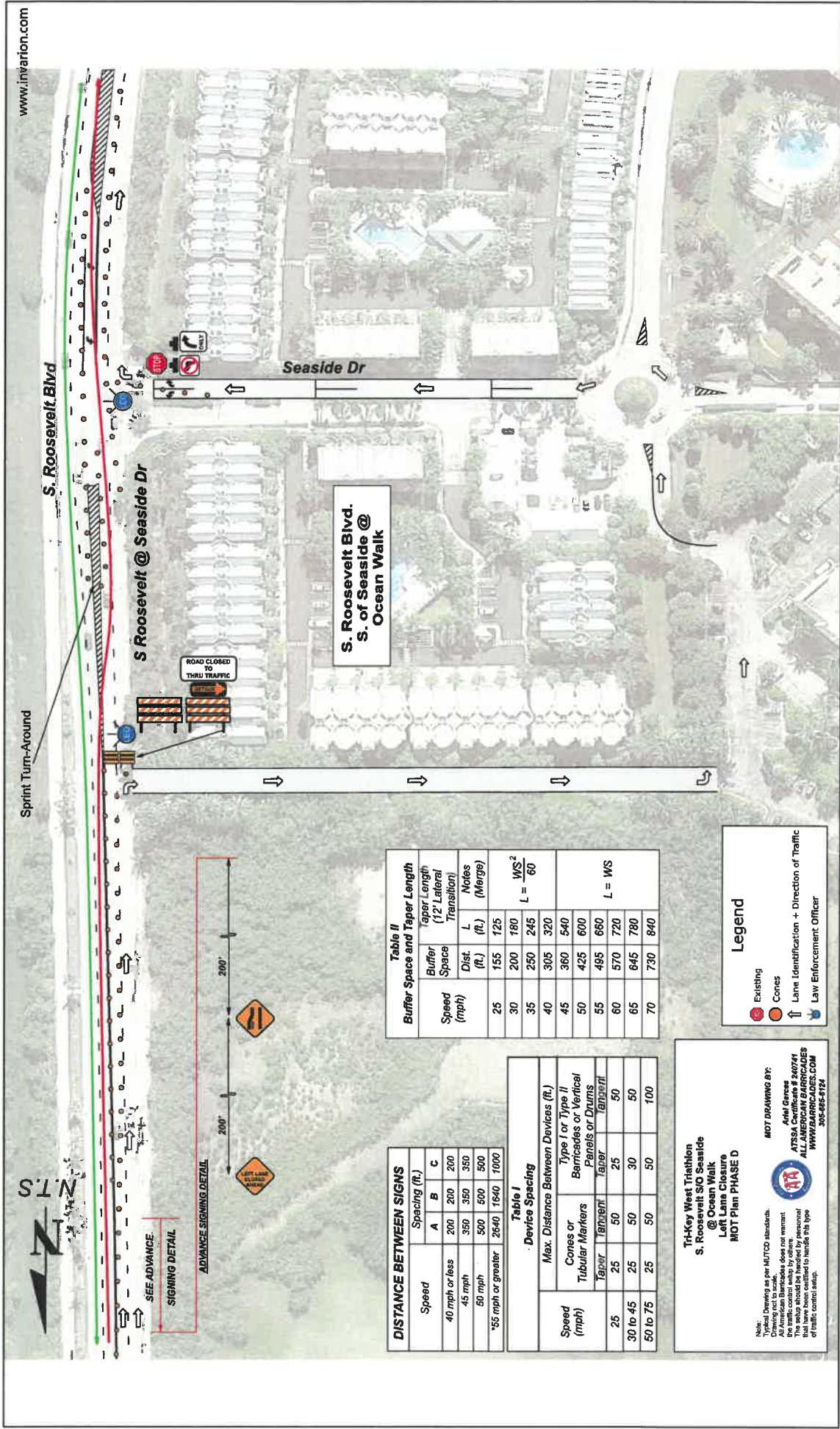
DISTANCE BETWEEN SIGNS

Speed	Spacing (ft.)		
	A	B	C
40 mph or less	200	200	200
45 mph	350	350	350
50 mph	500	500	500
*55 mph or greater	2640	1640	1000

Tri Key West Triathlon
Overseas Hwy & Saratoga Ave
Temp Closure / Off Ramp
MOT Plan EXH G

MOT DRAWING BY:
Arnel Garcia
ATSSA Contract # 240744
ALL AMERICAN BARRICADES
WWW.AMBARRICADES.COM
305-988-8124

Note:
Typical Drawing as per FDOT Index 600 series and MUTCD standards.
Drawing not to scale.
All American Barricades does not warrant the traffic control setup by others.
It should be handled by personnel that have been trained to handle this type of traffic control setup.



www.invarion.com

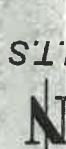
Sprint Turn-Around

S. Roosevelt Blvd

S. Roosevelt Blvd. S. of Seaside @ Ocean Walk

Seaside Dr

ROAD CLOSED TO THRU TRAFFIC



SEE ADVANCE SIGNING DETAIL

ADVANCE SIGNING DETAIL



DISTANCE BETWEEN SIGNS

Speed (mph)	Spacing (ft.)		
	A	B	C
40 mph or less	200	200	200
45 mph	350	350	350
60 mph	500	500	500
*55 mph or greater	2640	1940	1000

**Table II
Buffer Space and Taper Length**

Speed (mph)	Buffer Space (ft.)	Taper Length (12' Lateral Transition)	
		L (ft.)	Notes (Merge)
25	155	125	
30	200	180	WS ²
35	250	245	L = 60
40	305	320	
45	360	540	
50	425	600	
55	495	660	L = WS
60	570	720	
65	645	780	
70	730	840	

**Table I
Device Spacing**

Speed (mph)	Max. Distance Between Devices (ft.)	
	Cones or Tubular Markers	Type I or Type II Barricades or Vertical Panels or Drums
25	Taper	Taper
	25	50
30 to 45	25	50
	25	50
50 to 75	25	50
	25	100

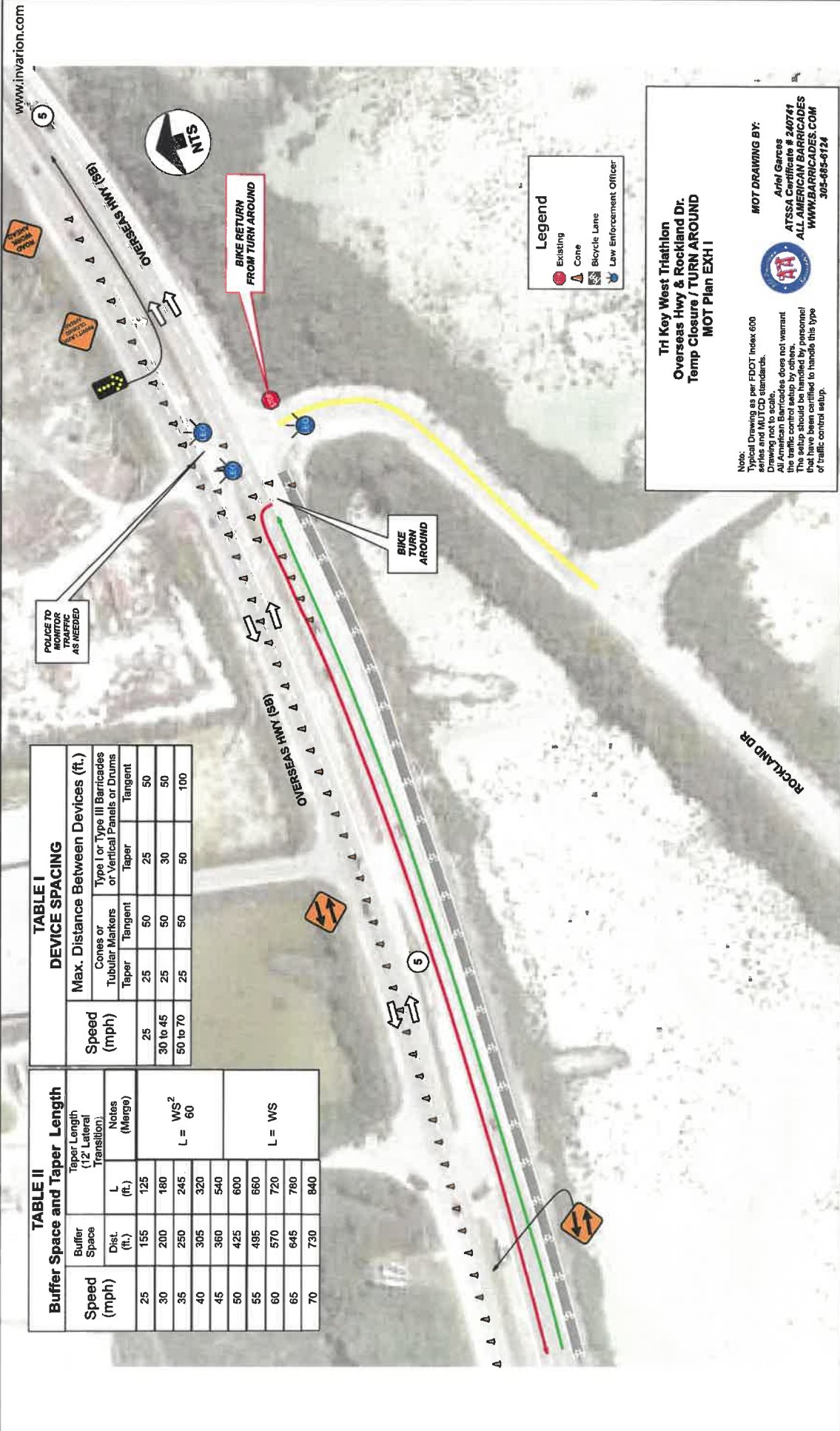
Legend

- Existing
- Cones
- Lane Identification + Direction of Traffic
- Law Enforcement Officer

Tri-Key West Triathlon
S. Roosevelt S/O Seaside
@ Ocean Walk
Left Lane Closure
MOT Plan PHASE D

MOT DRAWING BY:
Arlin G. Jones
ATXSSA Certificate # 260741
ALL AMERICAN BARRICADES.COM
300-886-5124

Note:
Typical Drawing as per MUTCD standards.
All American Barricades does not warrant the traffic control setup by others. All American Barricades, Inc. and its employees shall have been contacted to verify this type of traffic control setup.



www.invarion.com

TABLE I
DEVICE SPACING

Speed (mph)	Max. Distance Between Devices (ft.)		
	Cones or Tubular Markers	Type I or Type III Barricades or Vertical Panels or Drums	Taper
25	25	50	25
30 to 45	25	50	30
50 to 70	25	50	50
			100

TABLE II
Buffer Space and Taper Length

Speed (mph)	Buffer Space (ft.)	Taper Length (12' Lateral Transition)	
		L (ft.)	Notes (Merge)
25	155	125	L = WS ² L = 60
30	200	180	
35	250	245	L = WS
40	305	320	
45	360	540	
50	425	600	
55	495	660	
60	570	720	
65	645	780	
70	730	840	

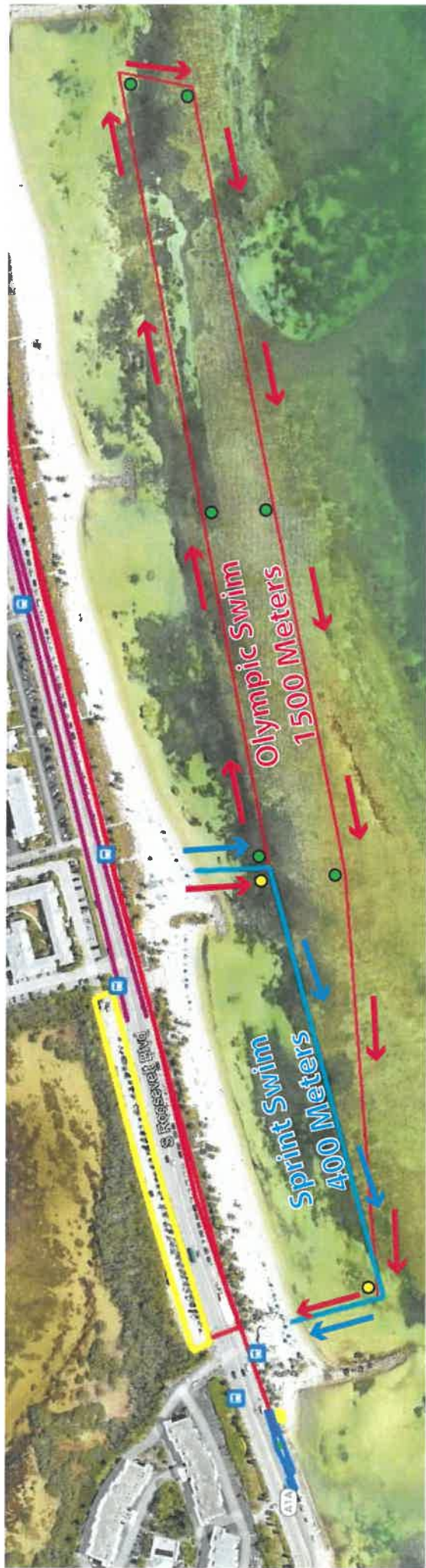
Legend

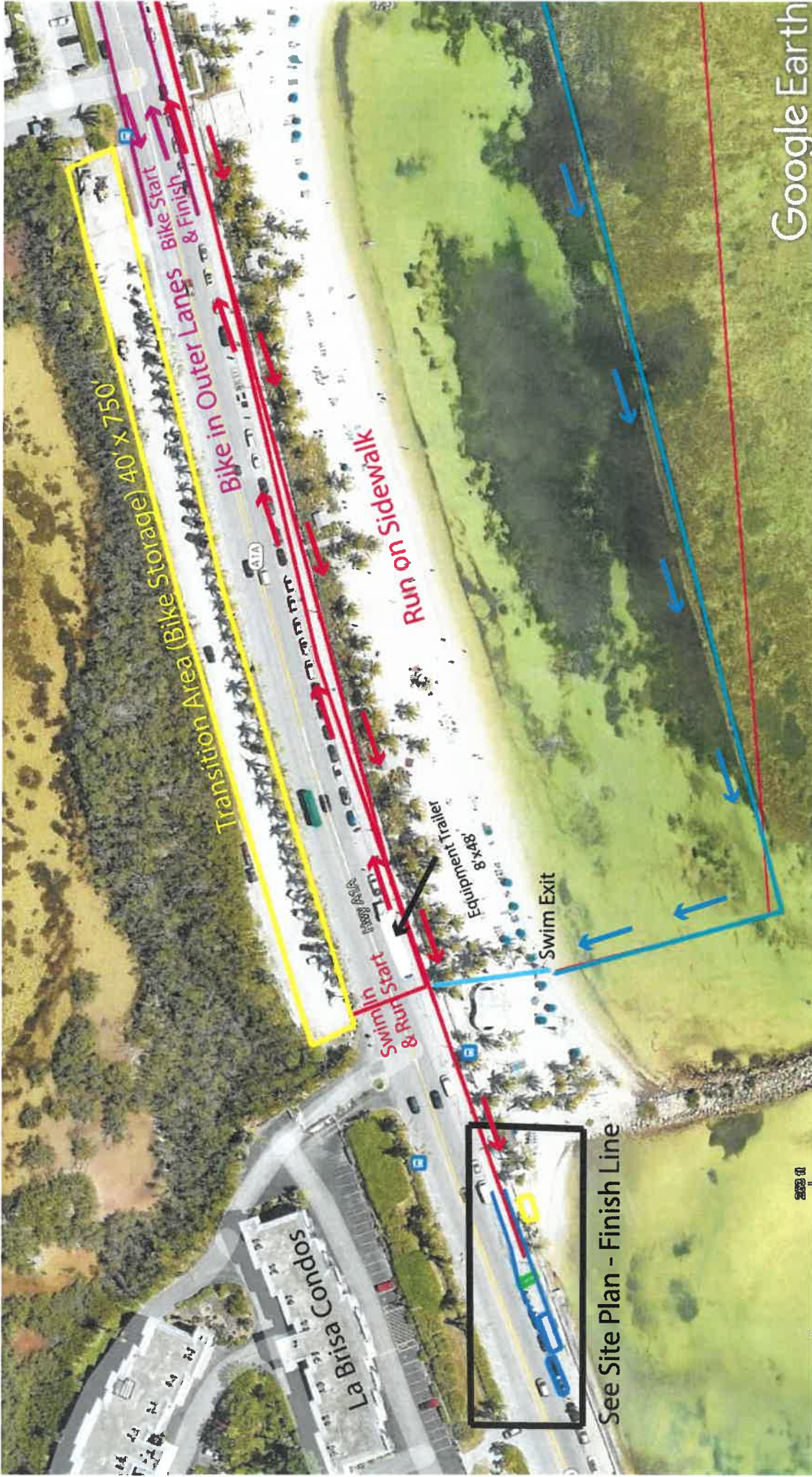
- Existing
- Cone
- Bicycle Lane
- Law Enforcement Officer

Tri Key West Triathlon
Overseas Hwy & Rockland Dr.
Temp Closure / TURN AROUND
MOT Plan EXH I

Notes:
 1. Typical Drawing as per FDOT Index 600
 2. All drawings are based on Florida standards.
 3. Drawing not to scale.
 4. All American Barricades does not warrant the traffic control setup by others.
 5. This setup should be handled by personnel that have been certified to handle this type of traffic control setup.

MOT DRAWING BY:
 Ariel Garces
 ATSSA Certificate # 240741
 ALL AMERICAN BARRICADES
 WWW.BARRICADES.COM
 305-685-6124





Transition Area (Bike Storage) 40' x 750'

Bike in Outer Lanes

Bike Start & Finish

Run on Sidewalk

Swim Start & Run Start

Swim Exit

La Bresa Condos



See Site Plan - Finish Line



Run Course Uses Sidewalk Only Both Directions (No Street)
Sprint Triathlon runs 1 lap. Olympic Triathlon runs 2 laps.



POLICE TO MONITOR TRAFFIC AS NEEDED

BIKE RACE PATH

BIKE RACE RETURN

S ROOSEVELT SB TRAFFIC

FLAGLER AVE

EAGLE AVE

S ROOSEVELT BLVD

DUCK AVE

S. Roosevelt Blvd. & Flagler Ave

US1 NB TRAFFIC

Legend

- Cones
- Existing
- ⬇ Law Enforcement Officer
- ↑ Lane Identification + Direction of Traffic

**Tri-Key West Triathlon
Flagler Ave & S. Roosevelt Blvd.
Temp. Street Closure
MOT Plan PHASE F**

MOT DRAWING BY:
Ariel Garcos
ATSSA Certificate # 240741
ALL AMERICAN BARRICADES
WWW.BARRICADES.COM
305-685-6124



Note:
Typical Drawing as per MUTCD standards.
Drawing not to scale.
All American Barricades does not warrant the traffic control setup by others.
The setup should be handled by personnel that have been certified to handle this type of traffic control setup.

