



PAVEMENT MANAGEMENT SERVICES PROPOSAL

PREPARED: Monday, March 6, 2023

FOR: City of Key West, FL



ROADINSIGHTSTM

PAVEMENT MANAGEMENT SERVICES PROPOSAL



Monday, March 6, 2023

ATTN: Eric Augst
Special Projects Designer
1300 White Street
Key West, FL 33040



Dear Eric :

The following, all-inclusive proposal and managed services agreement from Pavement Management Group will provide the City of Key West, FL with a turn-key pavement management program for the estimated 62-centerline mile roadway network. The project scope and pricing provided is valid for 90 days from publish date.

To move forward, please enter the purchase order number, sign and date on the "Project Costs and Execution Page" (Page 7), and then submit electronically to schedule your project kickoff meeting.

Respectfully,



PAVEMENT MANAGEMENT GROUP

JAMES GOLDEN

Founder and CEO

(740) 507-3842

James@PavementManagement.com

A handwritten signature in black ink that reads 'James Golden III'. The signature is written in a cursive, flowing style.



PAVEMENT MANAGEMENT SERVICES PROPOSAL

TABLE OF CONTENTS

TABLE OF CONTENTS	2
I. Project Overview	3
II. Project Scope of Services	3
A. Project Kickoff	3
B. Inventory and Video Capture	3
C. Condition Assessment	4
D. Project Deliverable	4
E. Project Review and Closeout	4
F. Annual Managed Services	5
III. Project Invoicing and Terms	6
IV. Project Schedule	6
V. Project Costs and Execution	7

PAVEMENT MANAGEMENT SERVICES PROPOSAL

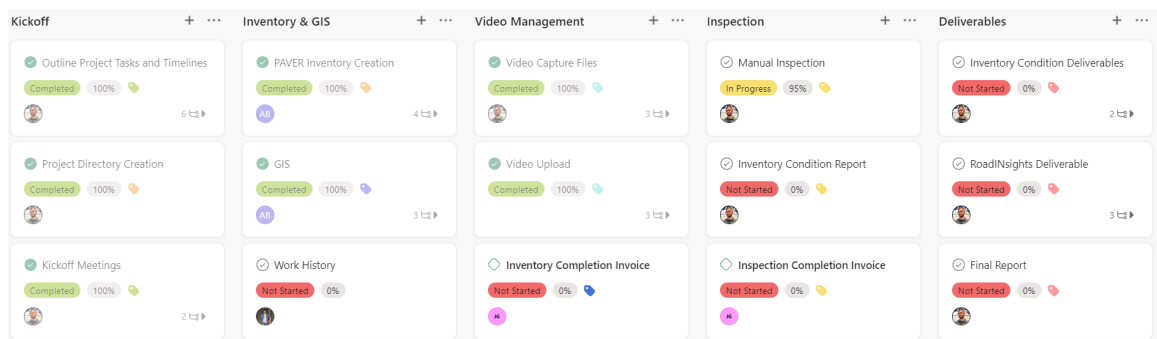
I. Project Overview

The City of Key West, FL, is responsible for the annual maintenance and repair of approximately 62-centerline miles of roadways within their boundary. RoadINsights from Pavement Management Group (PMG) combines expertise, industry standards, high-definition video, GIS, and artificial intelligence-powered condition assessment, ensuring the City of Key West, FL will meet its pavement management goals.

II. Project Scope of Services

A. Project Kickoff

PMG will host a project kickoff meeting via Zoom to discuss the scope of work, timeline, and deliverables and define all the resources required for the project. At this meeting, the project manager will present and request additional information and resources from the client deemed essential for completing the project on time.



B. Inventory and Video Capture

PMG will leverage the client-provided resources with internal processes to develop a complete roadway network inventory, fully linked to GIS for mapping capabilities. Our patrol team will capture 100 % of your Roadway Network in 1080P full HD video format and 60 frames per second. We will organize and upload these videos to our secure cloud-based server, where they will be accessible for streaming within our project report deliverables and your RoadINsights dashboard.



PAVEMENT MANAGEMENT SERVICES PROPOSAL

C. Condition Assessment

PMG uses a proprietary Artificial Intelligence (AI) model to identify, document, and quantify all distresses occurring within each section of the pavement networks. The distress data is first imported into the PAVER pavement management system for initial Pavement Condition Index (PCI) calculation. Our Quality Assurance team then reviews all documented distress data to finalize the PCI for each segment and pavement network, adhering to the ASTM D6433 condition assessment standard for roadways, trails, and parking lots. The PCI is on a numeric scale of 0 – 100, with 0 considered failed and 100 considered excellent. Each section is then classified within one of seven condition categories, which aid in correlating maintenance and repair activities with conditions.



D. Project Deliverable

The following final project deliverables are as follows and will be delivered to the client in both online accessible and physical hard drive format:

- RoadINsights Platform with Streaming HD Video and Analytics
- Dedicated Shared Google Drive for all Project Files, Reports, and Videos
- Final Project Report in Both PDF and Online Accessible Format
- Final Inventory and Condition Data in Excel Spreadsheet Format
- Final Inventory and Condition Data in GIS Shapefile Format
- Final Inventory and Condition Data in Google Earth Accessible Format

To see our RoadINsights, pavement management platform in action, [click here!](#)

E. Project Review and Closeout

PMG will host a Zoom-based meeting to present the finalized project report, deliverables and training in navigating your RoadINsights online dashboard. An onsite meeting may be requested and granted for an additional fee to be discussed and agreed upon between consultant and client.

PAVEMENT MANAGEMENT SERVICES PROPOSAL

F. Annual Managed Services

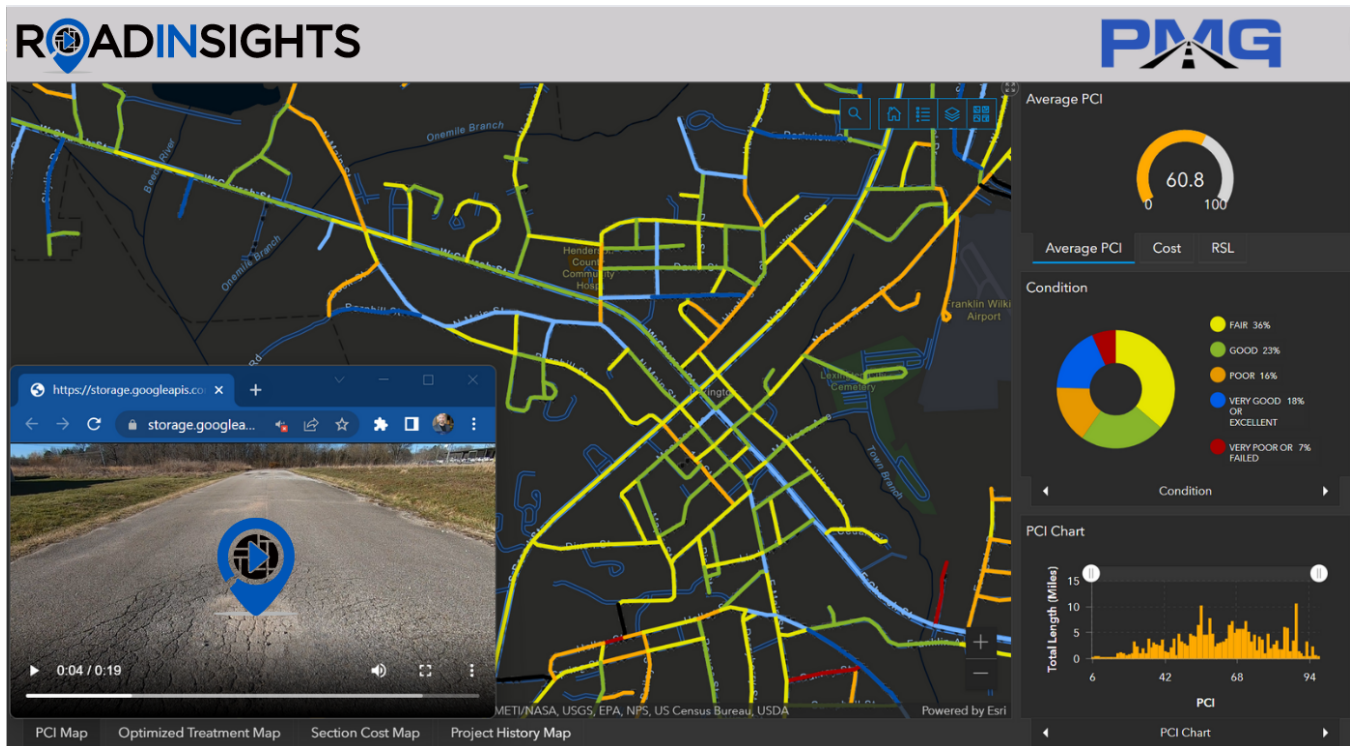
PMG completes our turn-key pavement management solution through our annual web-based platform, high-definition video streaming, consulting, and support services:

- 1 Year of RoadINSights –Unlimited Access and Video Streaming
- 1 Year of Continued Consulting, Training, and Support Services (Up to 8 Hours)
- 1 Annual State of the Network Update
 - Addition of Newly Constructed or Annexed Roadways
 - Removal of Sections no Longer Maintained
 - Addition of Annual Maintenance and Repair Activity
 - Complete RoadINSights, Inventory, Condition, Work and KPI Update

These annual services provide the critical systems, tools, data, accessibility, and resources to keep your pavement management program up to date.

Your annual managed services subscription will begin on the date of our Project Review and Closeout Meeting and will end on the same anniversary date the following year.

PMG will provide a proposal for continued managed services for an additional year, 30 days before expiration.



PAVEMENT MANAGEMENT SERVICES PROPOSAL

III. Project Invoicing and Terms

PMG will invoice monthly, based upon project task progress and against the task percentages outlined within the cost table above. Payment terms are to be NET 30, and PMG greatly appreciates all efforts for prompt and on-time payments. We will provide supporting documents for each invoice as well.

PMG's Point of Contact for all invoicing, payment, insurance, and vendor-related documents:

Christy Oprandi

Office Manager

M: (740) 404-5762

O: (800) 638-8040

E: Christy@PavementManagementGroup.com

IV. Project Schedule

PMG recommends a Q2 2023 Project Schedule. Once PMG has received a signed copy of this proposal with the purchase order number, we will schedule and host the project kickoff meeting, typically within two weeks of receipt. The actual project schedule will be reviewed and discussed on this call, with services typically beginning within 30 days of the kickoff meeting. PMG estimates this project to be completed within 120 days of the start date.

TASK	APR	MAY	JUN	JUL	AUG-MAR '24
A. Project Kickoff					
B. Inventory and Video					
C. ASTM Condition Assessment					
D. Project Deliverable					
E. Project Closeout					
F. Managed Services					

PAVEMENT MANAGEMENT SERVICES PROPOSAL

V. Project Costs and Execution

The following Cost Table has been provided to outline the tasks and itemized costs associated with this project. To move forward, please enter the purchase order number, sign, date and then submit electronically to schedule your project kickoff meeting.

TASK	PERCENTAGE	COST
A. Project Kickoff	10%	\$1,300
B. Inventory and Video Capture	30%	\$3,900
C. ASTM Condition Assessment	30%	\$3,900
D. Project Deliverable	20%	\$2,600
E. Project Closeout	10%	\$1,300
F. RoadINsights + Managed Services	NA - Annual Fee	\$2,000
		Project Total: \$15,000

\$15,000

Project Price Not to Exceed:

Purchase Order Number:

Authorized Signature:

Date:

