



# COOPER CARRY

## Site C

3824 N. Roosevelt Boulevard  
Key West, FL 33040

Key West Hotel Collection

### TREES & PALMS TO BE REMOVED

Type	Size	Quantity	Size	Quantity
Palm	10'	2	17'	1
	12'	4	18'	2
	14'	3	22'	1
	15'	2	24'	1
	16'	11		
Coconut Palm	16'	1	21'	2
	18'	6	22'	7
	19'	1	24'	3
	20'	4		
Pine	28'	1	30'	1
Buttonwood	25'	1		
Gumbo Limbo	28'	1		
Umbrella	18'	2		
	20'	1		
Unknown	16'	2	23'	1
	20'	6	26'	1
	22'	1		

### TREES & PALMS TO REMAIN IN PLACE

Type	Size	Quantity	Size	Quantity
Palm	14'	5	18'	4
	15'	1	23'	1
	16'	9	24'	1
	17'	1		
Coconut Palm	12'	2	22'	2
	18'	1	26'	1
Gumbo Limbo	15'	1	20'	1
	16'	1		
Ficus	15'	1	18'	1
	16'	1		
Umbrella	12'	1	19'	2
	13'	1	20'	1
	16'	2	22'	3
	18'	6		
Unknown	14'	1	20'	1
	16'	1	24'	1
	17'	2		

### PROPOSED LANDSCAPE TREE/PALM CALCULATIONS

106 Trees New	106 Trees on Key West Plant List	
132 Palms New	96 Palms on Key West Plant List	
238 New Trees & Palms	202 Trees & Palms on Key West Plant List	84%

**Site C**

3824 N. Roosevelt Boulevard  
Key West, FL 33040

Key West Hotel Collection

**PROPOSED PLANT LIST REVISIONS**

Sea Grape (*Cocoloba uvifera*) replaced with Wax Myrtle (*Myrica cerifera*) and Dahoon Holly (*Ilex cassine dahoon*)

Loblolly Bay (*Gordonia lasianthis*) replaced with Dahoon Holly (*Ilex cassine dahoon*)

Live Oak (*Quercus virginiana*) replaced with Buttonwood (*Conocarpus erectus*)









COOPER CARRY

ATLANTA WASHINGTON NEW YORK NEWPORT BEACH

© Copyright Cooper Carry 2013

SCOPE DOCUMENTS

The Construction Documents have not been completed therefore this drawing may be incomplete or not coordinated. The documents issued indicate the general scope of the Project. The Contractor is responsible for complete and coordinated pricing and Work, and shall include all items necessary for the proper execution and completion of the Project, whether indicated or not. All components of the Project shall comply with any and all requirements of national, state, and local codes. The Contractor shall inform the Owner and Architect of any omissions, inconsistencies or errors in the information provided. If no notice is given and any omissions, inconsistencies or errors are discovered, the Architect's decisions on items of Work included in the scope shall be binding on the Contractor, when consistent with the general scope and quality of the Project.

ISSUANCES

No.	Drawing Issue Description	Date
	DEVELOPMENT PLAN	02/01/2013
	TREE PERMIT APPLICATION	02/20/2013

KEY WEST HOTEL COLLECTION UNBRANDED (SITE C)

3824 North Roosevelt Boulevard Key West, Florida 33040

J.L. Woode Ltd.

CONCEPTUAL LANDSCAPE PLAN

BOB NEAL Principal-in-Charge	20120295 Project No.
MANNY DOMINGUEZ Design Director	02/01/13 Date
ANDRES RUBIO Project Manager	
T.JACK BAGBY Project Architect	

L1.00

ISSUED FOR TREE PERMIT APPLICATION ONLY

EXISTING TREE LEGEND

D = Diameter of tree.  
H = Height of tree

- = Palm
- = Almond
- = Buttonwood
- = Tree, Unknown
- = Coconut
- = Pine
- = Gumbo Limbo
- = Umbrella
- = Ficus
- = Papaya
- = Rubber
- = Hong Kong Tulip
- = Seagrape

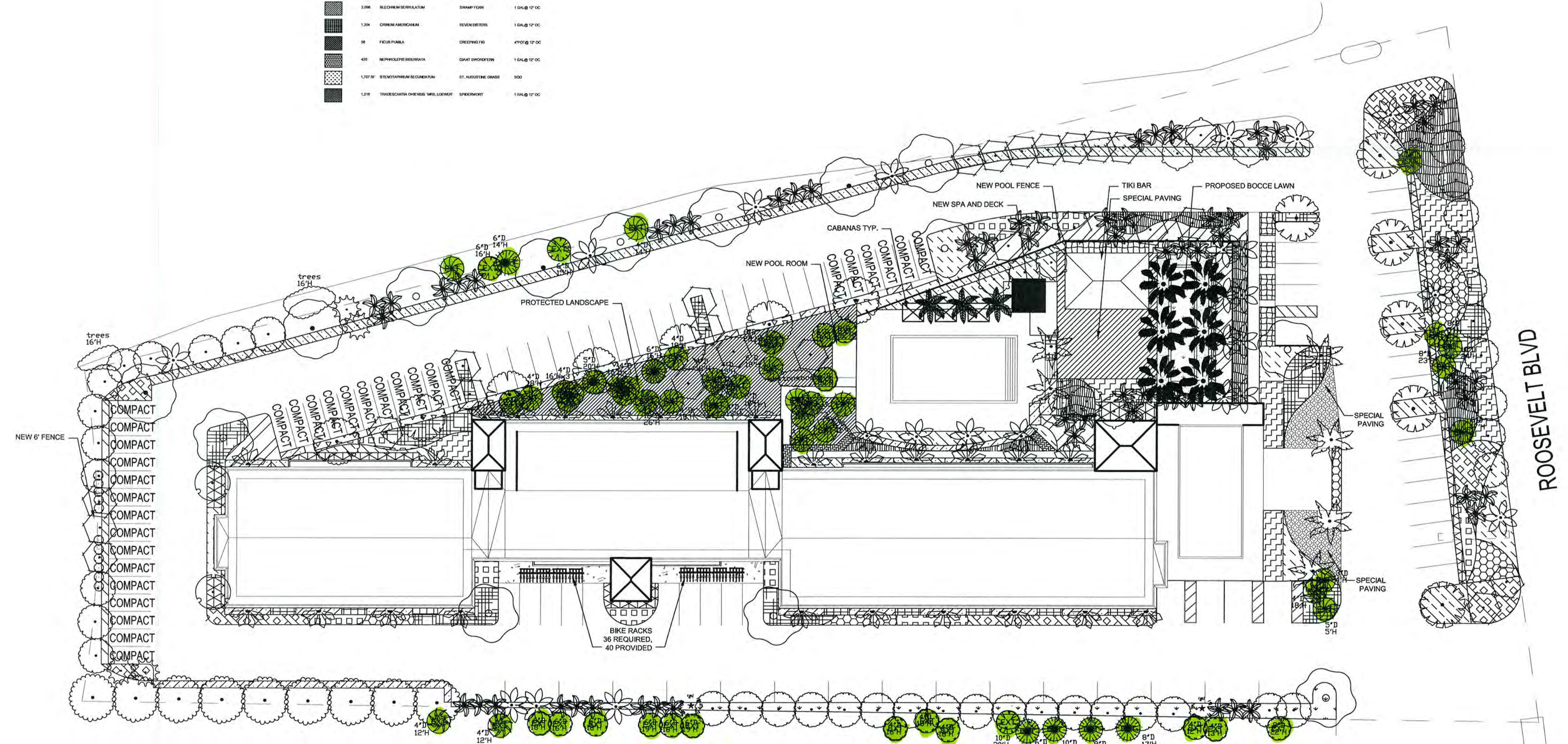
PLANT SCHEDULE

NO.	SYM.	COMMON NAME	COMMENTS	QTY	SIZE
1		TRAVELER PALM	TRAVELER PALM	200	12" DB
2		KEY WEST PALM	KEY WEST PALM	100	12" DB
3		COCONUT PALM	COCONUT PALM	100	12" DB
4		COCONUT PALM	COCONUT PALM	100	12" DB
5		COCONUT PALM	COCONUT PALM	100	12" DB
6		COCONUT PALM	COCONUT PALM	100	12" DB
7		COCONUT PALM	COCONUT PALM	100	12" DB
8		COCONUT PALM	COCONUT PALM	100	12" DB
9		COCONUT PALM	COCONUT PALM	100	12" DB
10		COCONUT PALM	COCONUT PALM	100	12" DB
11		COCONUT PALM	COCONUT PALM	100	12" DB
12		COCONUT PALM	COCONUT PALM	100	12" DB
13		COCONUT PALM	COCONUT PALM	100	12" DB
14		COCONUT PALM	COCONUT PALM	100	12" DB
15		COCONUT PALM	COCONUT PALM	100	12" DB
16		COCONUT PALM	COCONUT PALM	100	12" DB
17		COCONUT PALM	COCONUT PALM	100	12" DB
18		COCONUT PALM	COCONUT PALM	100	12" DB
19		COCONUT PALM	COCONUT PALM	100	12" DB
20		COCONUT PALM	COCONUT PALM	100	12" DB
21		COCONUT PALM	COCONUT PALM	100	12" DB
22		COCONUT PALM	COCONUT PALM	100	12" DB
23		COCONUT PALM	COCONUT PALM	100	12" DB
24		COCONUT PALM	COCONUT PALM	100	12" DB
25		COCONUT PALM	COCONUT PALM	100	12" DB
26		COCONUT PALM	COCONUT PALM	100	12" DB
27		COCONUT PALM	COCONUT PALM	100	12" DB
28		COCONUT PALM	COCONUT PALM	100	12" DB
29		COCONUT PALM	COCONUT PALM	100	12" DB
30		COCONUT PALM	COCONUT PALM	100	12" DB
31		COCONUT PALM	COCONUT PALM	100	12" DB
32		COCONUT PALM	COCONUT PALM	100	12" DB
33		COCONUT PALM	COCONUT PALM	100	12" DB
34		COCONUT PALM	COCONUT PALM	100	12" DB
35		COCONUT PALM	COCONUT PALM	100	12" DB
36		COCONUT PALM	COCONUT PALM	100	12" DB
37		COCONUT PALM	COCONUT PALM	100	12" DB
38		COCONUT PALM	COCONUT PALM	100	12" DB
39		COCONUT PALM	COCONUT PALM	100	12" DB
40		COCONUT PALM	COCONUT PALM	100	12" DB
41		COCONUT PALM	COCONUT PALM	100	12" DB
42		COCONUT PALM	COCONUT PALM	100	12" DB
43		COCONUT PALM	COCONUT PALM	100	12" DB
44		COCONUT PALM	COCONUT PALM	100	12" DB
45		COCONUT PALM	COCONUT PALM	100	12" DB
46		COCONUT PALM	COCONUT PALM	100	12" DB
47		COCONUT PALM	COCONUT PALM	100	12" DB
48		COCONUT PALM	COCONUT PALM	100	12" DB
49		COCONUT PALM	COCONUT PALM	100	12" DB
50		COCONUT PALM	COCONUT PALM	100	12" DB
51		COCONUT PALM	COCONUT PALM	100	12" DB
52		COCONUT PALM	COCONUT PALM	100	12" DB
53		COCONUT PALM	COCONUT PALM	100	12" DB
54		COCONUT PALM	COCONUT PALM	100	12" DB
55		COCONUT PALM	COCONUT PALM	100	12" DB
56		COCONUT PALM	COCONUT PALM	100	12" DB
57		COCONUT PALM	COCONUT PALM	100	12" DB
58		COCONUT PALM	COCONUT PALM	100	12" DB
59		COCONUT PALM	COCONUT PALM	100	12" DB
60		COCONUT PALM	COCONUT PALM	100	12" DB

TREE PERMIT APPLICATION NOTES  
 PALMS TO BE REPLACED: 54 51  
 NATIVE PALMS PLANTED: 72 96  
 NON NATIVE PALMS TO BE PLANTED: 60 34  
 CANOPY TREES TO BE REPLACED: 12 18  
 NATIVE CANOPY TREES TO BE PLANTED: 113 106  
 NON NATIVE CANOPY TREES TO BE PLANTED: 0  
 EXISTING TREES TO REMAIN ON SITE: 60 55

EXISTING TREES TO REMAIN

NOTE:  
 ALL TREES AND PALMS TO BE FLORIDA GRADE #1



1 ARCHITECTURAL SITE PLAN  
 L1.00 SCALE: 1" = 30'-0"