

Staff Report



THE CITY OF KEY WEST

Post Office Box 1409 Key West, FL 33041-1409 (305) 809-3700

Historic Architectural Review Commission

Staff Report

Meeting Date:	September 25 , 2012
Applicant:	City of Key West
Application Number:	H12-01-1520
Address:	Caroline St. from Elizabeth St. to Grinnell St. and Trumbo Road from Grinnell St. to US Coast Guard Gate
Summary Description of Work :	Road and drainage improvements , together with new sidewalks, street lights, crosswalks, bicycle routes and racks, trash and recycle containers ,signage , and landscape
Guidelines Cited in Review:	Guidelines: page 1 installations of signs, benches or lighting; page 2 Improvements to a right of way public or private ; page 16 requirement that development comply with the Secretary of the Interior Standards/Guidelines ; page 43 changing of streets and relationship to buildings; page 44 recommended plant materials- Tree Commission approval obtained on 9.10.12 ;page 50 exterior lighting Secretary of Interior Standards/Guidelines ; page 31 protect building by proper drainage; page 34 preserving historic character of streetscape and repairing streetscape with appropriate materials



THE CITY OF KEY WEST

Post Office Box 1409 Key West, FL 33041-1409 (305) 809-3700

Staff Analysis: The project is a complete reconstruction of Caroline Street from Elizabeth to Grinnell , and also includes Trumbo road where only repaving and some drainage work is planned.

The planned improvements include new drainage, new side walks , new paving , a stop sign at William Street, a new bike path on the north side of the street from Grinnell connecting to the planned bike path Simonton and through the Key West Bight, Complete new landscaping, new lighting, new bicycle racks , provision for new signage, new delivery zones, new parking for residential uses (to be implemented by residential parking sticker program) , new brick or textured and colored cross walks at the intersections, new ADA access points at all intersections , low 4-5 ft. decorative fence behind the vegetation at the perimeter of the Key West Bight parking lot to protect the landscaping , and a revised and more convenient access to the Key West Bight Parking lot. Finally, the improvements include an 8.5 ft. wide sidewalk on the south side of the street and a 5.0 ft. side walk on the north side to handle the large number o users along the is street and to assist the commercial enterprises along it.

Consistency with Guidelines:

The planned improvements are consistent with guidelines listed as applicable because:

1. The historic buildings are protected by the new drainage improvements.
2. The lighting standards used are consistent with those used in other parts of the historic district, but distinct from those in the Bight , because there the identification with the maritime history requires a different theme.
3. The placement of plant materials is compatible with building type and both the list recommended in the guidelines and the Tree Commission Regulations.
4. The relationship of the buildings to the Street are not changed or harmed , the buildings and street maintain a sympathetic whole, recognizing the 50 ft. right of way and the limited number of improvements that can be safely placed in it.
5. The historic openings of side streets , alleys and lanes is maintained.
6. The street scape is being repaired with appropriate materials. For at least the past seventy five years the street surface has been asphalt. The design has interjected brick or brick patterned concrete at crosswalks, and along sidewalks edges to emulate the ballast bricks that were sometimes used on Key West streets over a 100 years ago.
7. Traffic calming measures , inclusive of stop signs and “speed tables” at intersections to slow traffic along this highly used pedestrian way will increase safety for users of the historic street.
8. The exterior lighting is the minimal necessary for the commercial and residential use and introduces no unneeded over lighted venues.



THE CITY OF KEY WEST

Post Office Box 1409 Key West, FL 33041-1409 (305) 809-3700

Other Significant Factors:

1. The proposed design solution is the result of a series of public workshop meetings to gather public opinion , balanced with the expressed need to solve a pressing drainage problem together with the staff 's professional experience with designing a safe , workable easily maintained street .
2. The design responds to the goals of the strategic Plan and Climate Action Plan to introduce more Landscaping to key areas of the City to effect a lowering of the City's carbon footprint. The plan also helps achieves these goals by providing a key component of the City's community wide bicycle path network.
3. The plan crates safe standard sized loading zones , and replaces inadequate sized residential parking spaces with conforming ones on the correct side of the street. These will be reserved for residential users on that part of Caroline Street.
4. The City is seeking Tax Increment funding for the project which is expected to take nine months to complete in one phase. Methods to complete sidewalks quickly , and to minimize effects on residential and commercial buildings along the street will be used. As of this date , and according to the engineer , there are minimal , if any encroachment from private property that would be required to be moved to accomplish the proposed work.

Attachments –

Application
Site photos included in plans
Project plans

Application

HISTORIC ARCHITECTURAL REVIEW APPLICATION



CITY OF KEY WEST
BUILDING DEPARTMENT
CERTIFICATE OF APPROPRIATENESS

APPLICATION # H12-01-1520

OWNER'S NAME: CITY OF KEY WEST DATE: 9-12-12

OWNER'S ADDRESS: P.O. Box 1409, Key West, FL PHONE #: 305 809 3792

APPLICANT'S NAME: PEREZ ENGINEERING & DEVELOPMENT
ELIZABETH LEWIS LANDSCAPE ARCHITECTURE PHONE #: 305 293 9440

APPLICANT'S ADDRESS: 1010 KENNEDY Drive, Suite 201, Key West, FL

ADDRESS OF CONSTRUCTION: CAROLINE STOLBER FROM GRINNELL TO ELIZABETH # OF UNITS:

THERE WILL BE A FINAL INSPECTION REQUIRED UNDER THIS PERMIT

DETAILED DESCRIPTION OF WORK:
STREET IMPROVEMENT PROJECT

Chapter 837.06 F.S.-False Official Statements - Whoever knowingly makes a false statement in writing with the intent to mislead a public servant in the performance of his or her official duty shall be guilty of a misdemeanor of the second degree punishable as provided for in s. 775.082 or 775.083

This application for Certificate of Appropriateness must precede applications for building permits, right of way permits, variances, and development review approvals. Applications must meet or exceed the requirements outlined by the Secretary of the Interior's Standards for Rehabilitation and Key West's Historic Architectural Guidelines.

RECEIVED
SEP 12 2012
CITY OF KEY WEST
PLANNING DEPT.

Once completed, the application shall be reviewed by staff for completeness and either approved or scheduled for presentation to the Historic Architectural Review Commission at the next available meeting. The applicant must be present at this meeting. The filing of this application does not ensure approval as submitted.

Applications that do not possess the required Submittals will be considered incomplete and will not be reviewed for approval.

Date: 9/12/12
Applicant's Signature: [Signature]

Required Submittals

<input type="checkbox"/>	TWO SETS OF SCALED DRAWINGS OF FLOOR PLAN, SITE PLAN AND EXTERIOR ELEVATIONS (for new buildings and additions)
<input type="checkbox"/>	TREE REMOVAL PERMIT (if applicable)
<input type="checkbox"/>	PHOTOGRAPHS OF EXISTING BUILDING (repairs, rehabs, or expansions)
<input type="checkbox"/>	PHOTOGRAPHS OF ADJACENT BUILDINGS (new buildings and additions)
<input type="checkbox"/>	ILLUSTRATIONS OF MANUFACTURED PRODUCTS TO BE USED SUCH AS SHUTTERS, DOORS, WINDOWS, PAINT COLOR CHIPS, AND AWNING FABRIC SAMPLES

Staff Use Only
Date: _____
Staff Approval: _____
Fee Due: \$ _____

HISTORIC ARCHITECTURAL REVIEW COMMISSION USE ONLY

Approved _____ Denied _____ Deferred _____

Reason for Deferral or Denial:

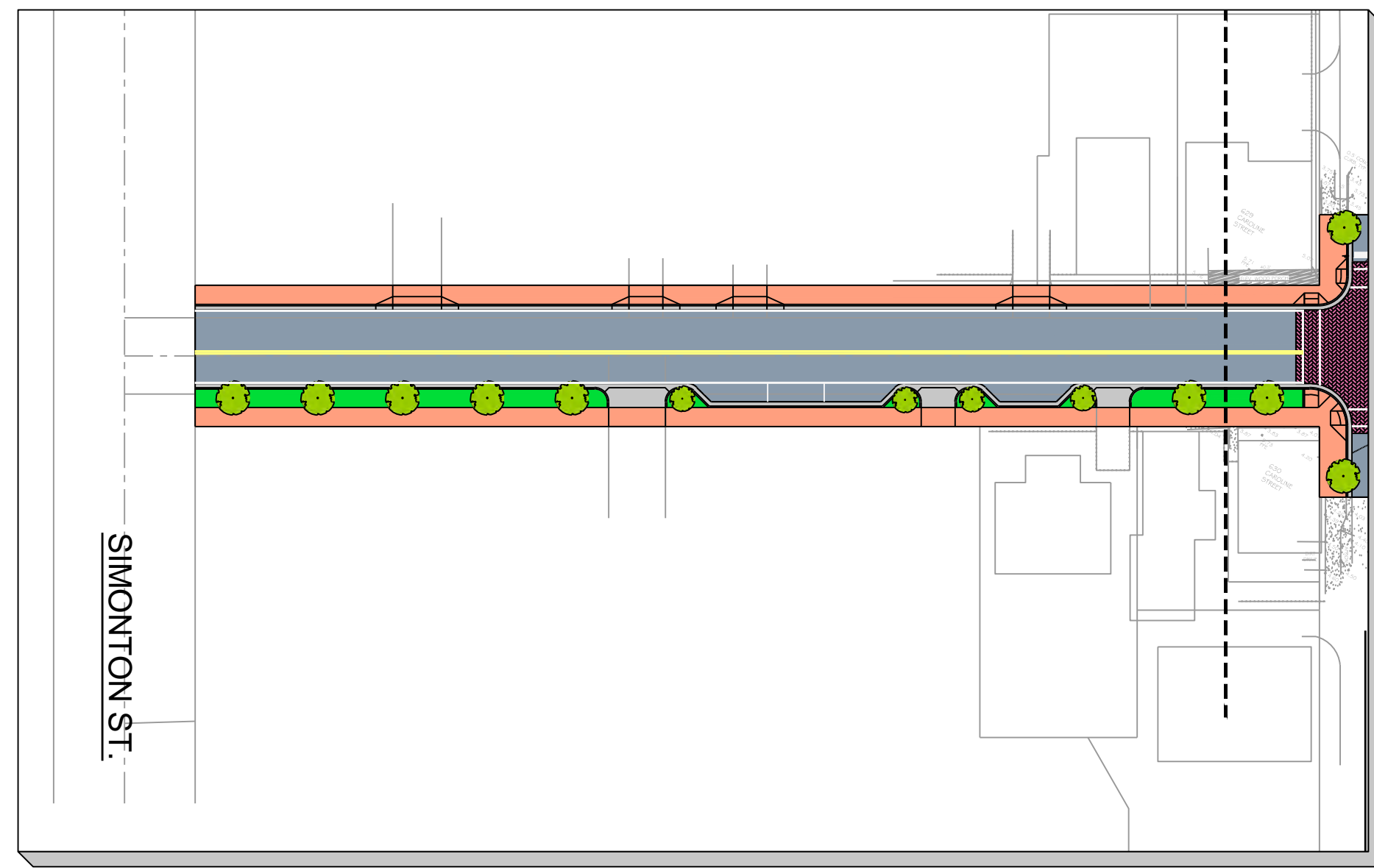
HARC Comments:

Limit of Work Approved, Conditions of Approval and/or Suggested
Changes:

Date: _____ Signature: _____

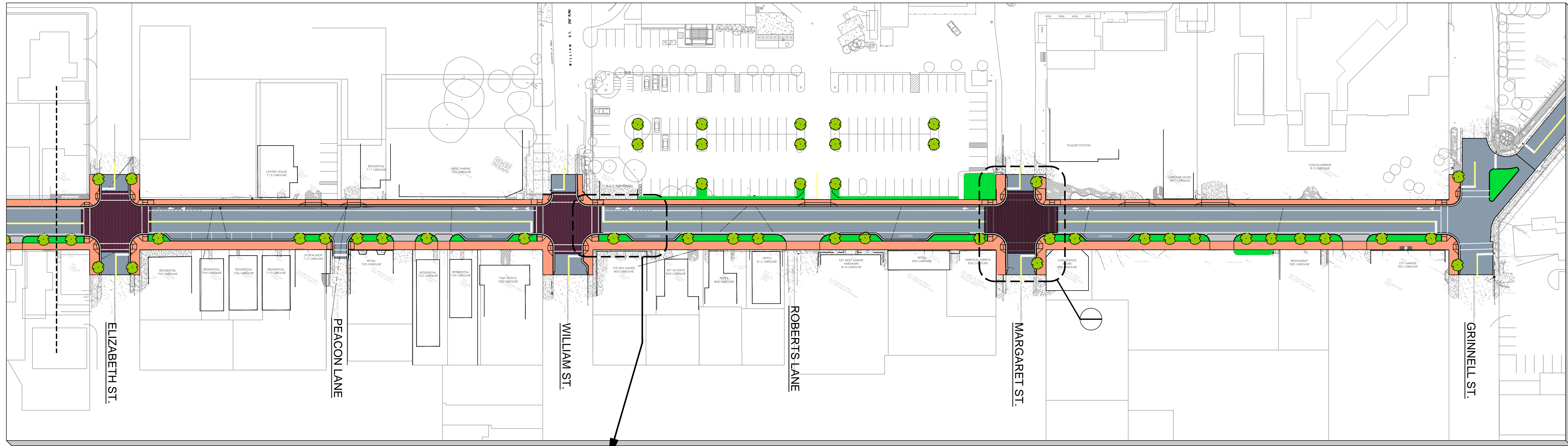
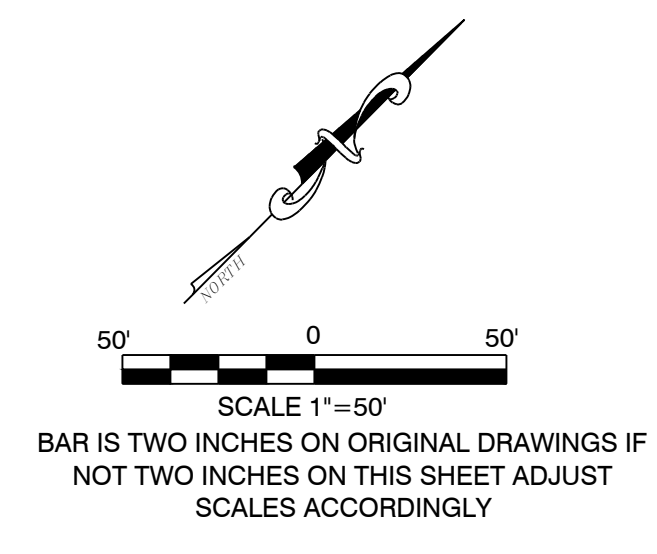
Historic Architectural
Review Commission

Proposed Plans

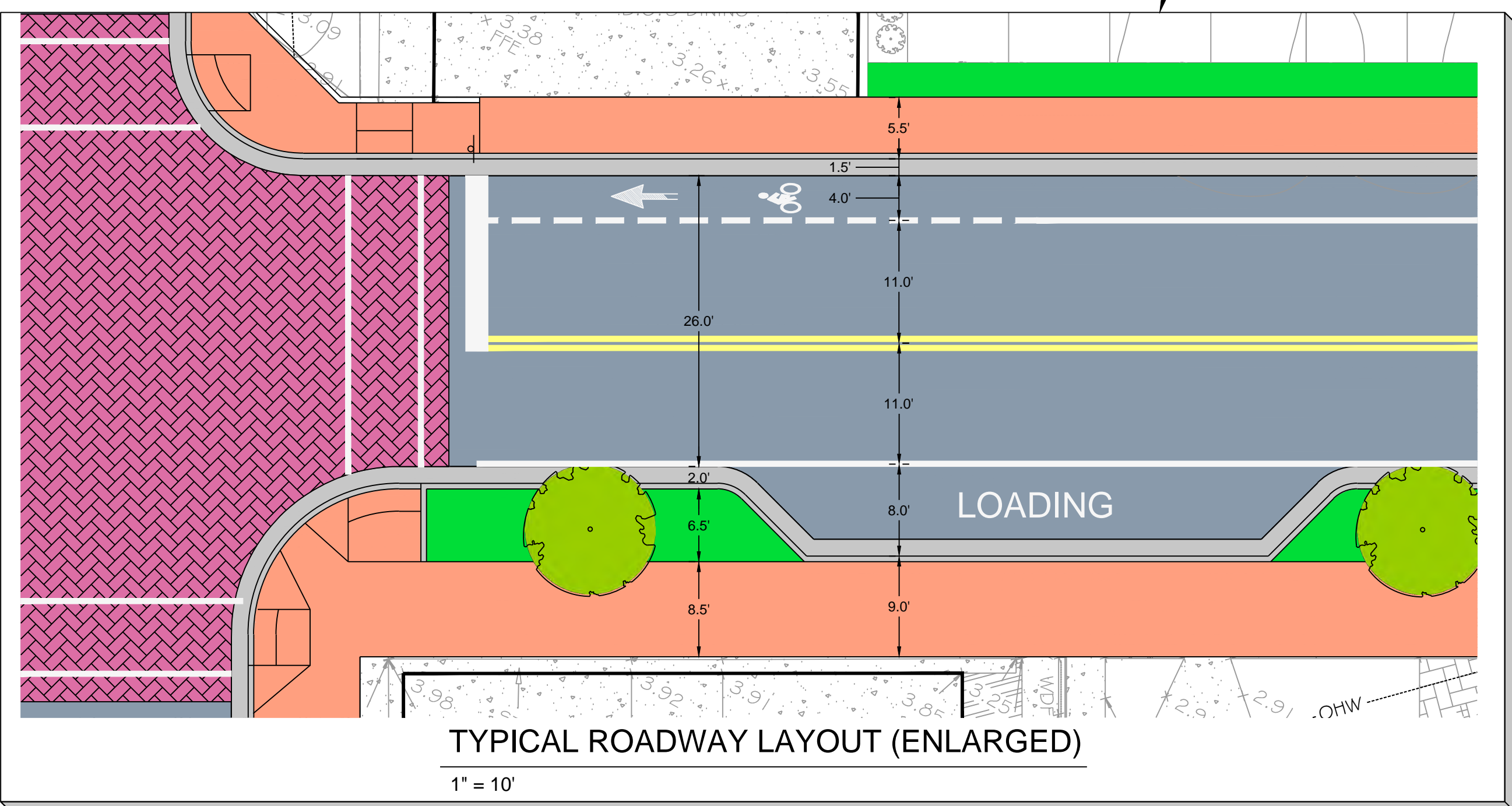


MATCHLINE A-A

SIMONTON ST.

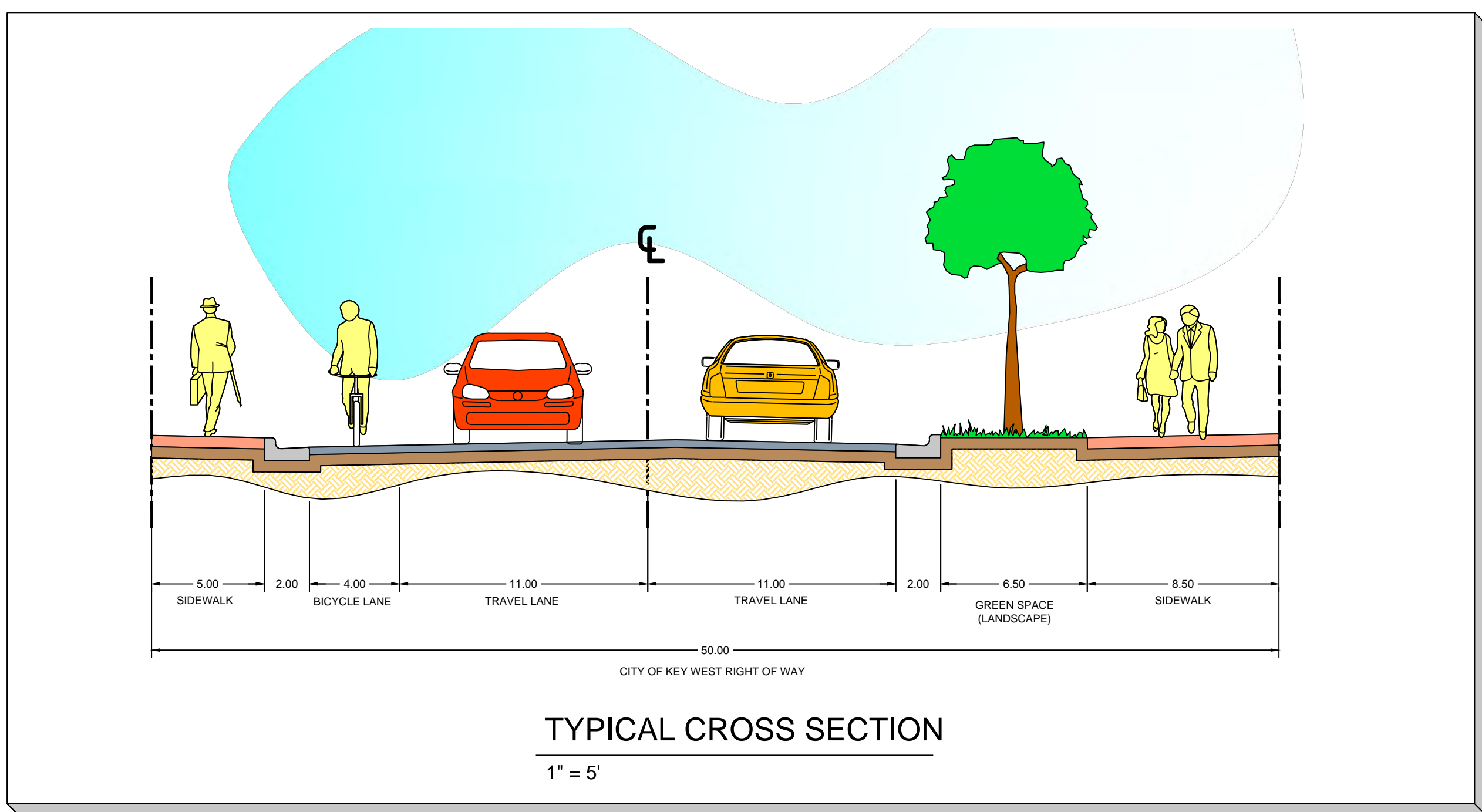


MATCHLINE A-A



TYPICAL ROADWAY LAYOUT (ENLARGED)

1" = 10'



TYPICAL CROSS SECTION

1" = 5'

CIVIL ENGINEERING • REGULATORY PERMITTING • CONSTRUCTION MANAGEMENT

KEY WEST OFFICE
1010 EAST KEY STREET, SUITE 400
KEY WEST, FLORIDA 33040
TEL: (305) 293-9440 FAX: (305) 296-0243

TAMPA OFFICE
CONCOURSE CENTER
3507 EAST FRONTAGE ROAD, SUITE 140
TEL: (813) 579-1616 FAX: (813) 289-0710

PEREZ ENGINEERING & DEVELOPMENT, INC.
CERTIFICATE OF AUTHORIZATION NO. 8579

ALLEN E. PEREZ, P.E.
Florida P.E. NO. 51468
September 19, 2012

REVISIONS:

1	
2	
3	
4	
5	
6	

CAROLINE STREET IMPROVEMENTS
ORIGINAL: SEPTEMBER 2011

KEY WEST, FL 33040
ROADWAY LAYOUT (OPTION A)

CITY OF KEY WEST
P.O. BOX 1409
KEY WEST, 33041

JOB NO.	111008
DRAWN	RTM
DESIGNED	AEP
CHECKED	AEP
QC	
SHEET	







West Marine

PAY TO PARK
IN THIS BLOCK



West Marine

PAY TO PARK
IN THIS BLOCK



NO TO PARK
IN THIS
ZONE

NO PARKING



NEW MARKET
THE CAROLINE ST.
• COLD COFFEES
• BEER • COCKTAILS
• WINE • MORE CORDS
• SODA • MARTINI'S
• MILK • BREAKFAST
• WATER • FILM &
• JUICE • ALL KINDS
• DRINKS • SANDWICHES
• SUN BLOCK
• SANDWICHES

OLD MARKET

The Fun Begins!

THE MARKET

TOUR BUS
STOP OFF
PICK UP
ONLY
15 MINUTES

CONCH TOUR





ART
830

ATM

NO PARKING
EXCEPT
FOR LOADING
UNLOAD

C





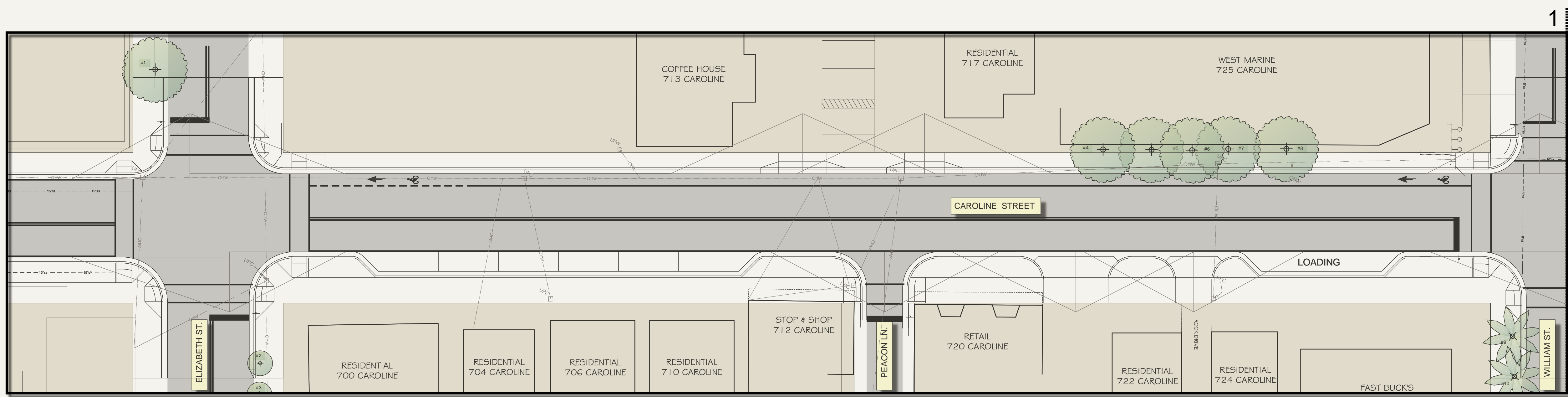
COLLEGE ST

SPEED LIMIT 25

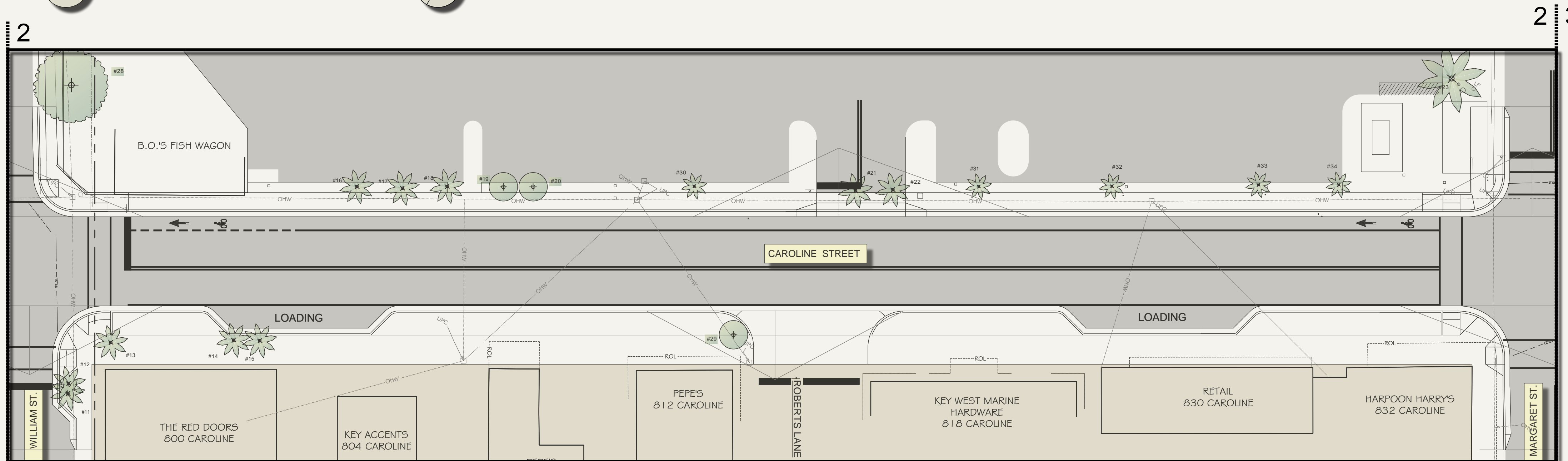
SHOR

HYAL

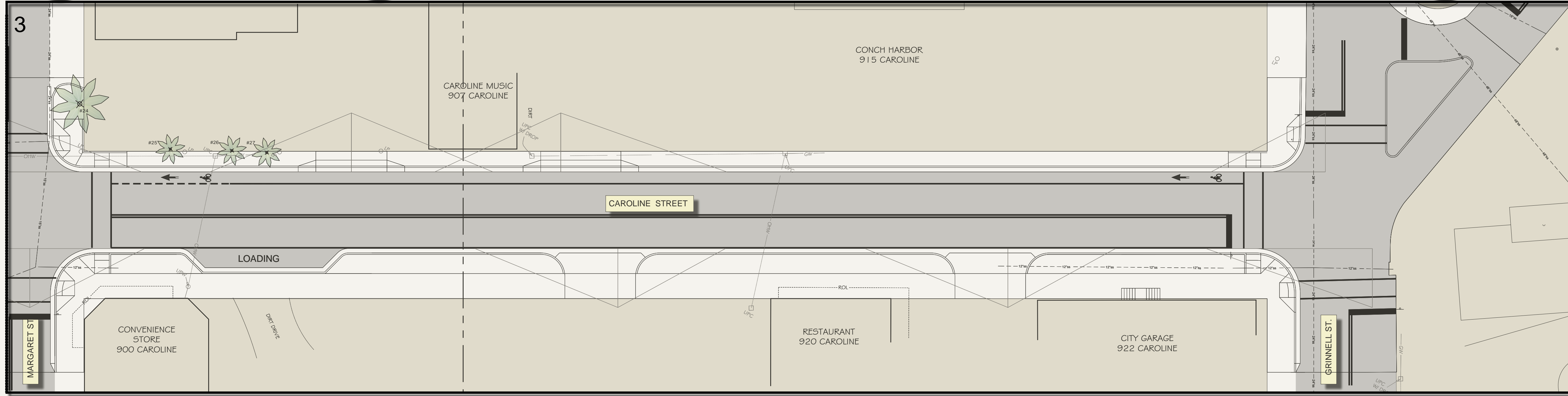




1 TREE DISPOSITION PLAN
 SCALE: 1" = 20'-0"
 N



2 TREE DISPOSITION PLAN
 SCALE: 1" = 20'-0"
 N



3 TREE DISPOSITION PLAN
 SCALE: 1" = 20'-0"
 N

NUMBER	BOTANICAL NAME	COMMON NAME	HEIGHT	SPREAD	CALIPER	CONDITION	STATUS
1	Pongam pinnata	Pongam Tree	30'-35'	20'-25'	18"	Poor	To Be Determined
2	Conocarpus erectus	Green Buttonwood	10'-15'	5'-10'	5"	Fair	To Be Determined
3	Conocarpus erectus sericeus	Silver Buttonwood	10'-15'	5'-10'	5"	Fair	To Be Determined
4	Albizia lebbek	Women's Tongue Tree	25'-30'	20'-25'	18"	Poor	Remove
5	Albizia lebbek	Women's Tongue Tree	25'-30'	20'-25'	7"	Poor	Remove
6	Albizia lebbek	Women's Tongue Tree	20'-25'	15'-20'	6"	Poor	Remove
7	Albizia lebbek	Women's Tongue Tree	20'-25'	15'-20'	5"	Poor	Remove
8	Albizia lebbek	Women's Tongue Tree	20'-25'	15'-20'	7"	Poor	Remove
9	Cocos nucifera	Coconut Palm	25'-30'	20'	12"	Good	To Be Determined
10	Cocos nucifera	Coconut Palm	25'-30'	20'	12"	Good	To Be Determined
11	Ravenala madagascariensis	Travellers Palm	15'-20'	15'-20'	8"	Poor	Remove
12	Ravenala madagascariensis	Travellers Palm	15'-20'	15'-20'	8"	Poor	Remove
13	Syagrus romanzofiana	Queen Palm	10'-15'	5'-10'	7"	Poor	Remove
14	Sabal palmetto	Sabal Palm	20'-25'	10'	12"	Good	Transplant
15	Sabal palmetto	Sabal Palm	20'-25'	10'	12"	Good	Transplant
16	Sabal palmetto	Sabal Palm	20'-25'	10'	12"	Good	Transplant
17	Sabal palmetto	Sabal Palm	20'-25'	10'	12"	Good	Transplant
18	Sabal palmetto	Sabal Palm	20'-25'	10'	12"	Good	Transplant
19	Conocarpus erectus sericeus	Silver Buttonwood	5'-10'	5'-10'	6"	Fair	Remove
20	Conocarpus erectus sericeus	Silver Buttonwood	5'-10'	5'-10'	6"	Fair	Remove
21	Sabal palmetto	Sabal Palm	20'-25'	10'	12"	Fair	Transplant
22	Sabal palmetto	Sabal Palm	20'-25'	10'	12"	Fair	Transplant
23	Cocos nucifera	Coconut Palm	25'-30'	20'-22'	12"	Fair	To Be Determined
24	Cocos nucifera	Coconut Palm	25'-30'	20'-22'	12"	Fair	To Be Determined
25	Thrinax radiata	Thatch Palm	10'-15'	5'-10'	5"	Good	To Be Determined
26	Thrinax radiata	Thatch Palm	10'-15'	5'-10'	5"	Good	To Be Determined
27	Thrinax radiata	Thatch Palm	10'-15'	5'-10'	5"	Good	To Be Determined
28	Ficus sp.	Ficus	25'-30'	20'-25'	24"	Poor	To Be Determined
29	Conocarpus erectus sericeus	Silver Buttonwood	10'-15'	10'-15'	3 3/4"	Poor	Remove
30	Thrinax radiata	Thatch Palm	3'-5'	3'-5'	4"	Fair	To Be Determined
31	Thrinax radiata	Thatch Palm	3'-5'	3'-5'	4"	Fair	To Be Determined
32	Thrinax radiata	Thatch Palm	3'-5'	3'-5'	4"	Fair	To Be Determined
33	Thrinax radiata	Thatch Palm	5'-8'	3'-5'	4"	Fair	To Be Determined
34	Thrinax radiata	Thatch Palm	3'-5'	3'-5'	4"	Fair	To Be Determined

4 EXISTING TREE DISPOSITION LIST
 SCALE: N.T.S.

Notes:
 Civil Engineering, Site Triangles and Survey Base provided by Perez Engineering and Development, Inc.
 Existing vegetation locations are approximate only and must be field verified by Surveyor prior to completion of 100% Construction Documents.

ELIZABETH NEWLAND
 LANDSCAPE ARCHITECTURE, LLC
 2525 Ponce de Leon Blvd., Suite 300
 Coral Gables, Florida 33134
 305.481.6301
 liznewland@bellsouth.net

Seal:
 ELIZABETH NEWLAND
 Registered Landscape Architect
 # LA0001288
 State of Florida
 Consultants:

Revisions:

CAROLINE ST. IMPROVEMENTS
 KEY WEST, FLORIDA

Drawing Size: 24x36 Project #: _____
 Drawn By: EN Checked By: EN
 Title: **EXISTING TREES & PALM DISPOSITION PLAN**
 Sheet Number: **L-1.0**
 Date: September, 2012

Seal:

ELIZABETH NEWLAND
Registered Landscape Architect
LA0001289
State of Florida

Consultants:

Revisions:

CAROLINE ST. IMPROVEMENTS
KEY WEST, FLORIDA

Drawing Size: 24x36 | Project #:

Drawn By: EN | Checked By: EN

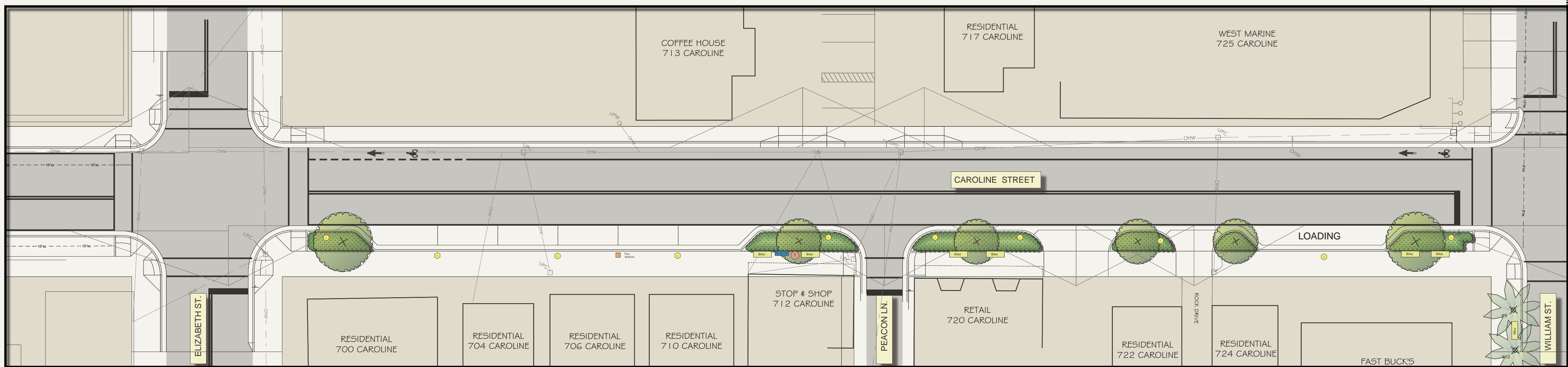
Title:

LANDSCAPE PLAN

Sheet Number:

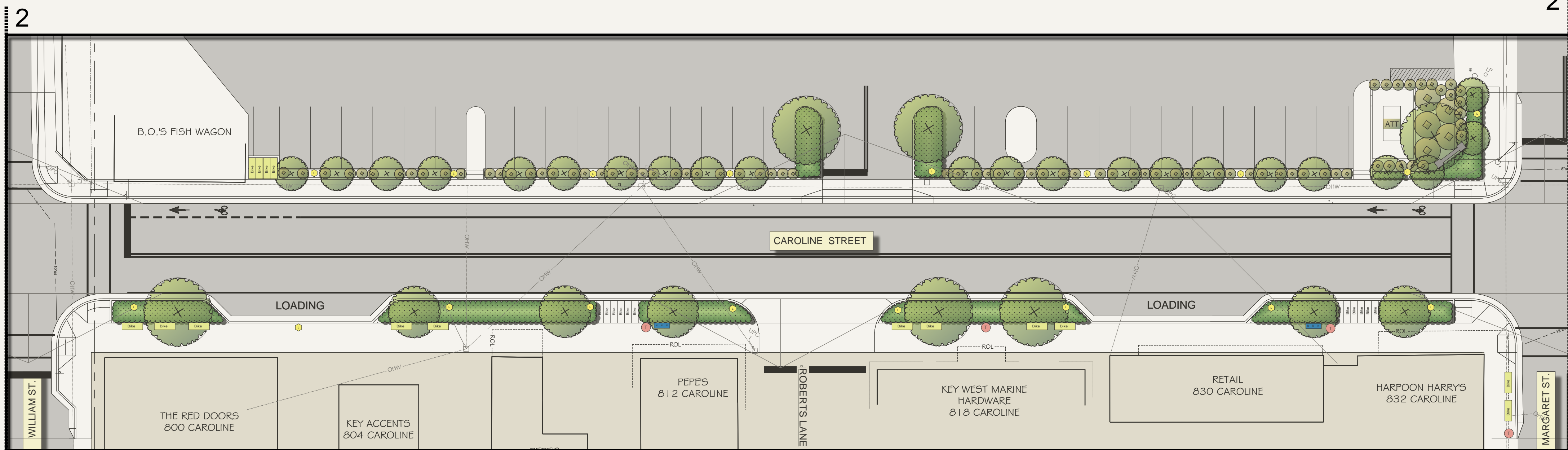
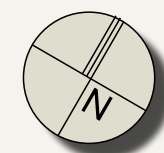
L-1.1

Date: - September, 2012



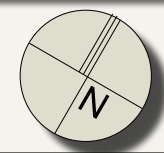
1 LANDSCAPE PLAN

L:1.1 SCALE: 1" = 20'-0"



2 LANDSCAPE PLAN

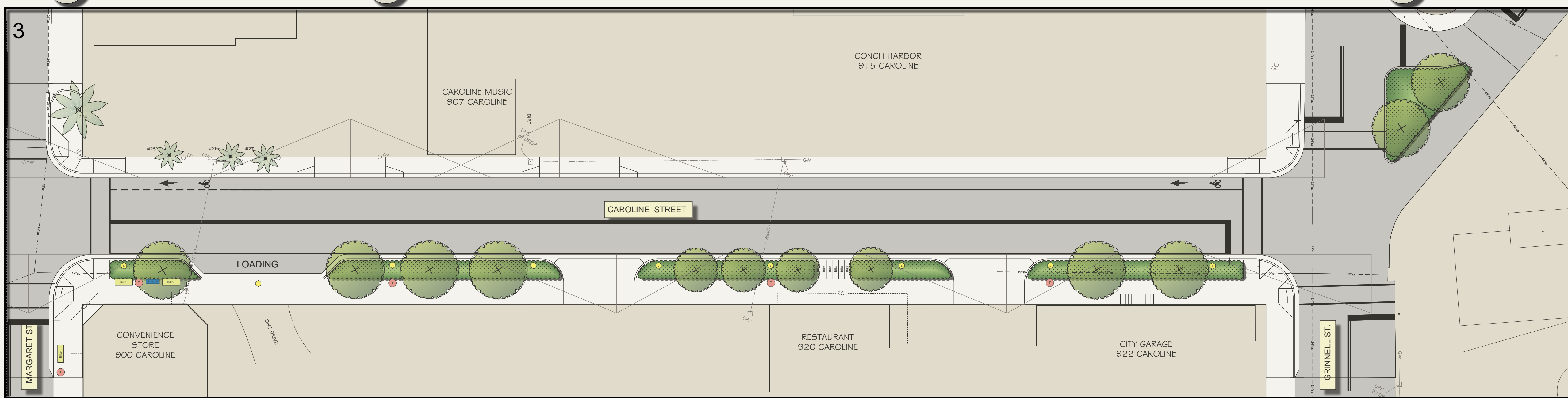
L:1.1 SCALE: 1" = 20'-0"



SYMBOL	QUANTITY	SCIENTIFIC NAME	COMMON NAME	NATIVE	CALIPER	HEIGHT	CANOPY	CONTAINER	SPACING	CONDITION
LARGE TREES										
CAW		Canella winterana	Cinnamon Bark	Yes	3"-4"	14'-16'	8'-10'	100 Gal	As Shown	6' CT
COD		Coccoloba diversifolia	Pigeon Plum	Yes	3"-4"	14'-16'	8'-10'	100 Gal	As Shown	6' CT
GUD	16	Guapira discolor	Blotly	Yes	3"-4"	14'-16'	8'-10'	100 Gal	As Shown	6' CT
MEDIUM TREES										
KRF		Krugiodendron ferreum	Black Ironwood	Yes	3"-4"	14'-16'	8'-10'	100 Gal	As Shown	6' CT
GYL	13	Gymnanthes lucida	Crabwood	Yes	3"-4"	14'-16'	8'-10'	100 Gal	As Shown	6' CT
SMALL TREES										
BOS		Bourreria succulenta	Bahama Strongbark	Yes	2"-3"	12'-14'	6'-8"	45 Gal	As Shown	6' CT
CIF		Citharexylum fruticosum	Fiddlewood	Yes	2"-3"	12'-14'	6'-8"	45 Gal	As Shown	6' CT
MYF	22	Myrcianthes fragrans	Simpson Stopper	Yes	2"-3"	12'-14'	6'-8"	45 Gal	As Shown	6' CT
LARGE SHRUBS										
BRL		Byrsonima lucida	Locustberry	Yes	2"-3"	6'-8"	4'-6"	30 Gal	As Shown	Shrub Type
CAC	5	capparis cynophallophora	Jamaican Caper	Yes	2"-3"	6'-8"	4'-6"	30 Gal	As Shown	Shrub Type
EUF		Eugenia foetida	Spanish Stopper	Yes	2"-3"	6'-8"	4'-6"	30 Gal	As Shown	Shrub Type
MEDIUM SHRUBS										
PSL	80	Psychotria ligustrifolia	Dwt Wild Coffee	Yes	NA	18"-24"	18"-24"	3 Gal	As Shown	
PSN		Psychotria nervosa	Wild Coffee	Yes	NA	24"-36"	24"-36"	3 Gal	As Shown	
SAB		Savia bahamensis	Maidenbush	Yes	NA	24"-36"	24"-36"	3 Gal	As Shown	
GROUND COVER										
ERL		Erodia littoralis	Golden Creeper	Yes	NA	12"-18"	12"-18"	1 Gal	18" O.C	
LAD	2655	Lantana depressa	Pineland Lantana	Yes	NA	12"-18"	12"-18"	1 Gal	18" O.C	
STJ		Stachytarpheta jamaicensis	Porterweed	Yes	NA	12"-18"	12"-18"	1 Gal	18" O.C	
ZAP		Zamia pumila	Coontie	Yes	NA	18"-24"	18"-24"	7 Gal	As Shown	

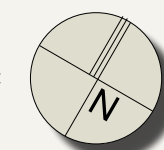
4 PLANT LIST

L:1.1 SCALE: N.T.S.



3 LANDSCAPE PLAN

L:1.1 SCALE: 1" = 20'-0"



SYMBOL	TYPE
[Blue rectangle]	NEWSPAPER RACK
[Red circle]	TRASH RECEPTACLE
[Yellow rectangle]	BICYCLE STANCHION RACK
[Blue square]	PARKING PAY STATION
[Yellow circle]	STREET LIGHT
[Grey rectangle]	MONUMENT SIGN

5 SITE FURNITURE SCHEDULE

L:1.1 SCALE: N.T.S.

Notes:
Civil Engineering, Site Triangles and Survey Base provided by Perez Engineering and Development, Inc.
Existing vegetation locations are approximate only and must be field verified by Surveyor prior to completion of 100% Construction Documents.

Seal:

ELIZABETH NEWLAND
Registered Landscape Architect
LA0001288
State of Florida

Consultants:

Revisions:

CAROLINE ST. IMPROVEMENTS
KEY WEST, FLORIDA

Drawing Size: 24x36 Project #:

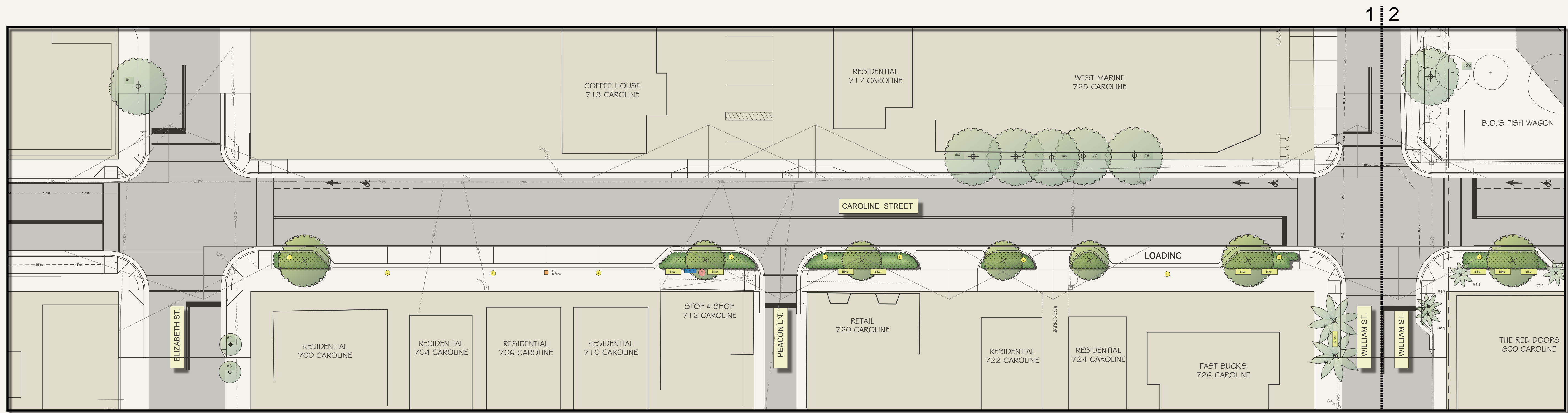
Drawn By: EN Checked By: EN

Title: LANDSCAPE PLAN & SECTION

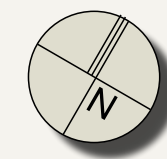
Sheet Number:

L-2.0

Date: - September, 2012



1 LANDSCAPE PLAN
SCALE: 1" = 20'-0"

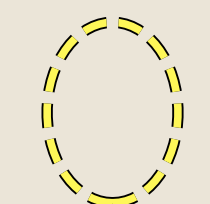


2 CAROLINE STREET & ELIZABETH STREET (EAST VIEW)
SCALE: N.T.S.



3 CAROLINE STREET & WILLIAM STREET (WEST VIEW)
SCALE: N.T.S.

NOTE:



Tree Mature Size

Seal:

ELIZABETH NEWLAND
Registered Landscape Architect
LA0001288
State of Florida

Consultants:

Revisions:

CAROLINE ST. IMPROVEMENTS
KEY WEST, FLORIDA

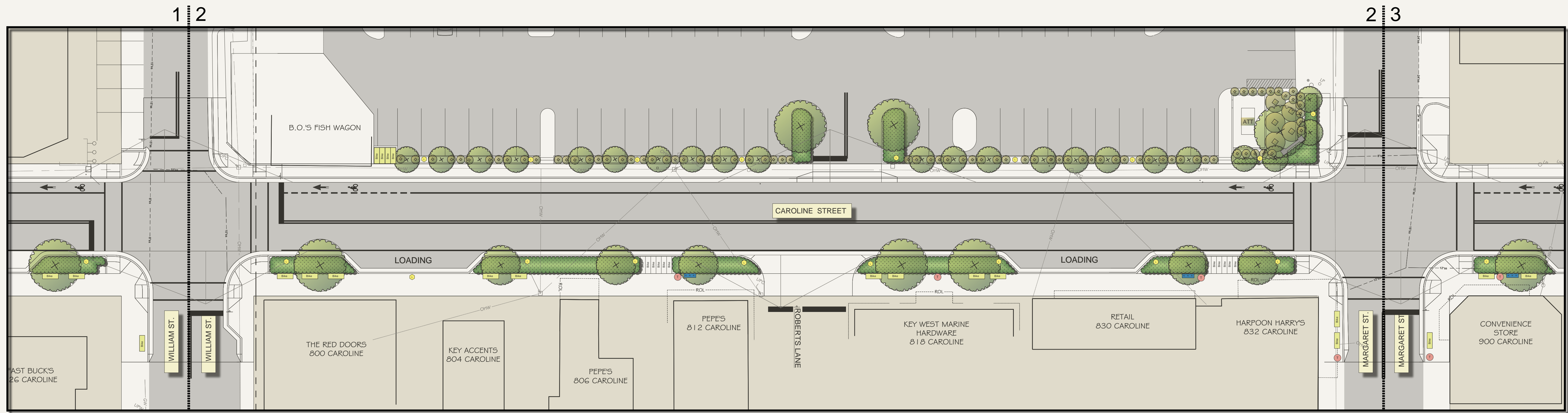
Drawing Size 24x36	Project #:
Drawn By: EN	Checked By: EN

Title:
LANDSCAPE
PLAN &
SECTION

Sheet Number:

L-2.1

Date: - September, 2012



1 LANDSCAPE PLAN
SCALE: 1" = 20'-0"



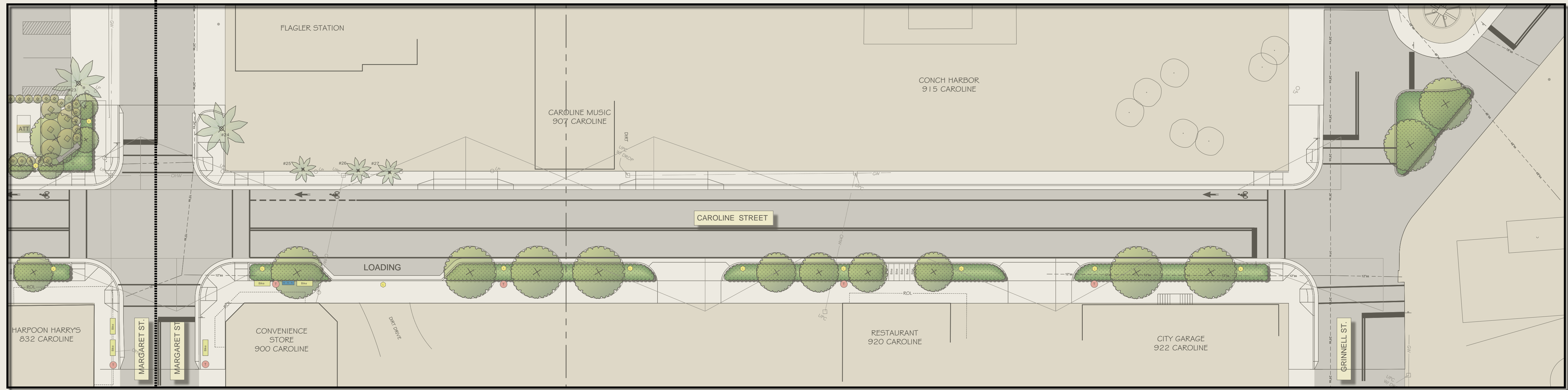
2 CAROLINE STREET & WILLIAM STREET (EAST VIEW)
SCALE: N.T.S.



3 CAROLINE STREET & MARGARET STREET (WEST VIEW)
SCALE: N.T.S.

NOTE:
 Tree Mature Size

2 3



1 LANDSCAPE PLAN
SCALE: 1" = 20'-0"



2 CAROLINE STREET & MARGARET STREET (EAST VIEW)
SCALE: N.T.S.



3 CAROLINE STREET & GRINNELL STREET (WEST VIEW)
SCALE: N.T.S.

NOTE:
 Tree Mature Size

ELIZABETH NEWLAND
 LANDSCAPE ARCHITECTURE, LLC
 2525 Ponce de Leon Blvd., Suite 300
 Coral Gables, Florida 33134
 305.481.6301
 liznewland@bellsouth.net

Seal:
 ELIZABETH NEWLAND
 Registered Landscape Architect
 # LA0001288
 State of Florida

Consultants:
 Revisions:

CAROLINE ST. IMPROVEMENTS
 KEY WEST, FLORIDA

Drawing Size 24x36	Project #:
Drawn By: EN	Checked By: EN
Title: LANDSCAPE PLAN	
Sheet Number: L-2.2	
Date: - September, 2012	



Canella winterana (Cinnamon Bark)
Elizabeth Newland



Coccoloba diversifolia (Pigeon Plum)
Elizabeth Newland



Guapira discolor (Blolly)
Elizabeth Newland



Krugiodendron ferreum (Black Ironwood)
Elizabeth Newland



Gymnanthes lucida (Crabwood)
Elizabeth Newland



Bourreria succulenta (Bahama Strongbark)
Elizabeth Newland



Citharexylum fruticosum (Fiddlewood)
Elizabeth Newland



Myrcianthes fragrans (Simpson Stopper)
Elizabeth Newland

ELIZABETH NEWLAND
LANDSCAPE ARCHITECTURE, LLC

2525 Ponce de Leon Blvd., Suite 300
Coral Gables, Florida 33134
305.481.6301
liznewland@bellsouth.net

Seal:

ELIZABETH NEWLAND
Registered Landscape Architect
LA0001288
State of Florida

Consultants:

Revisions:

CAROLINE ST. IMPROVEMENTS
KEY WEST, FLORIDA

Drawing Size: 24x36 | Project #:
Drawn By: EN | Checked By: EN
Title: **PLANT IMAGES**
Sheet Number: **L-3.0**
Date: - September, 2012



Byrsonima lucida (Locustberry)
Elizabeth Newland



Capparis cynophallophora (Jamaican Caper)
Elizabeth Newland



Eugenia foetida (Spanish Stopper)
Elizabeth Newland



Psychotria ligustrifolia (Dwf. Wild Coffee)
Elizabeth Newland



Psychotria nervosa (Wild Coffee)
Elizabeth Newland



Savia bahamensis (Maidenbush)
Elizabeth Newland



Ernodia littoralis (Golden Creeper)
Elizabeth Newland



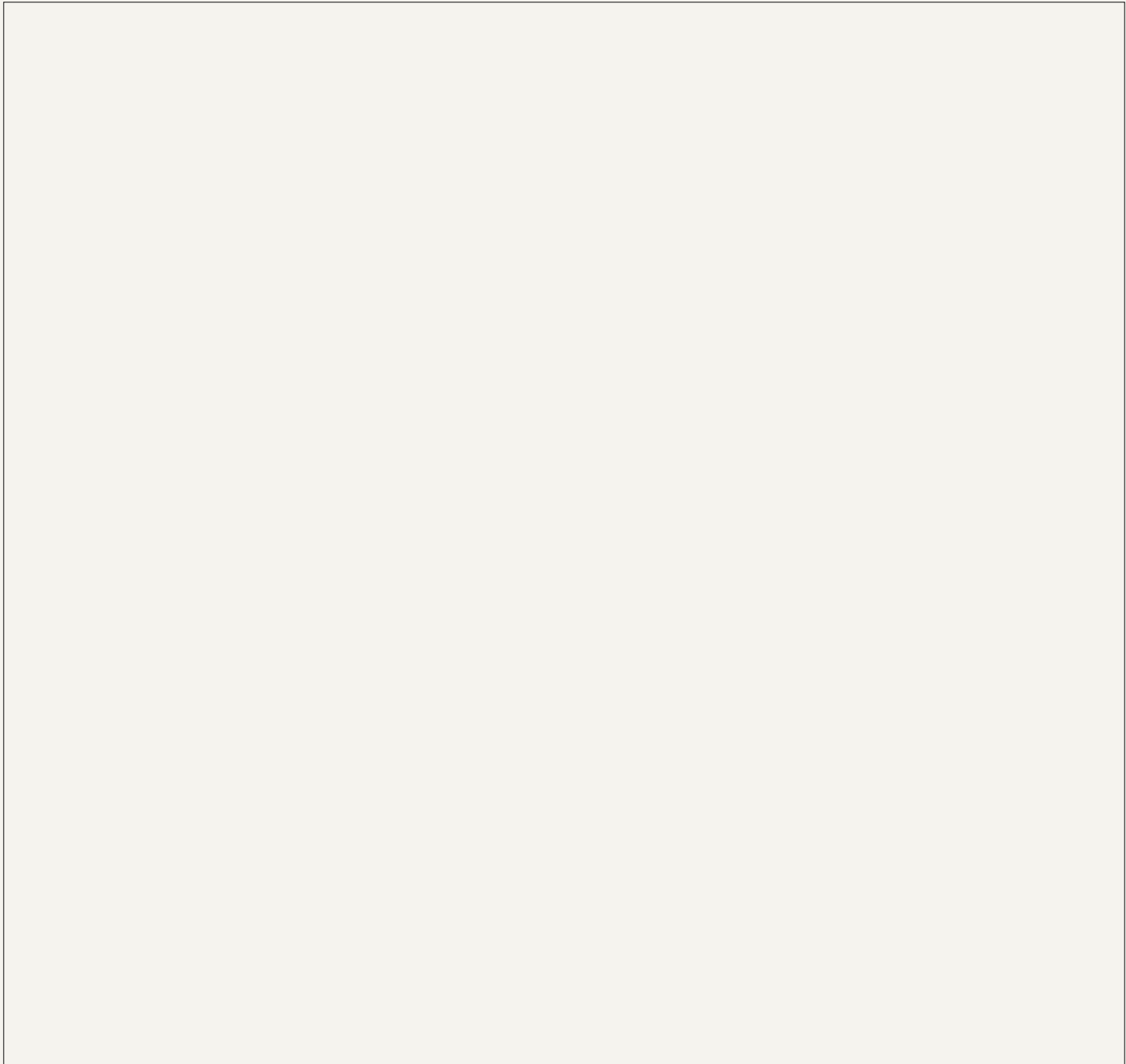
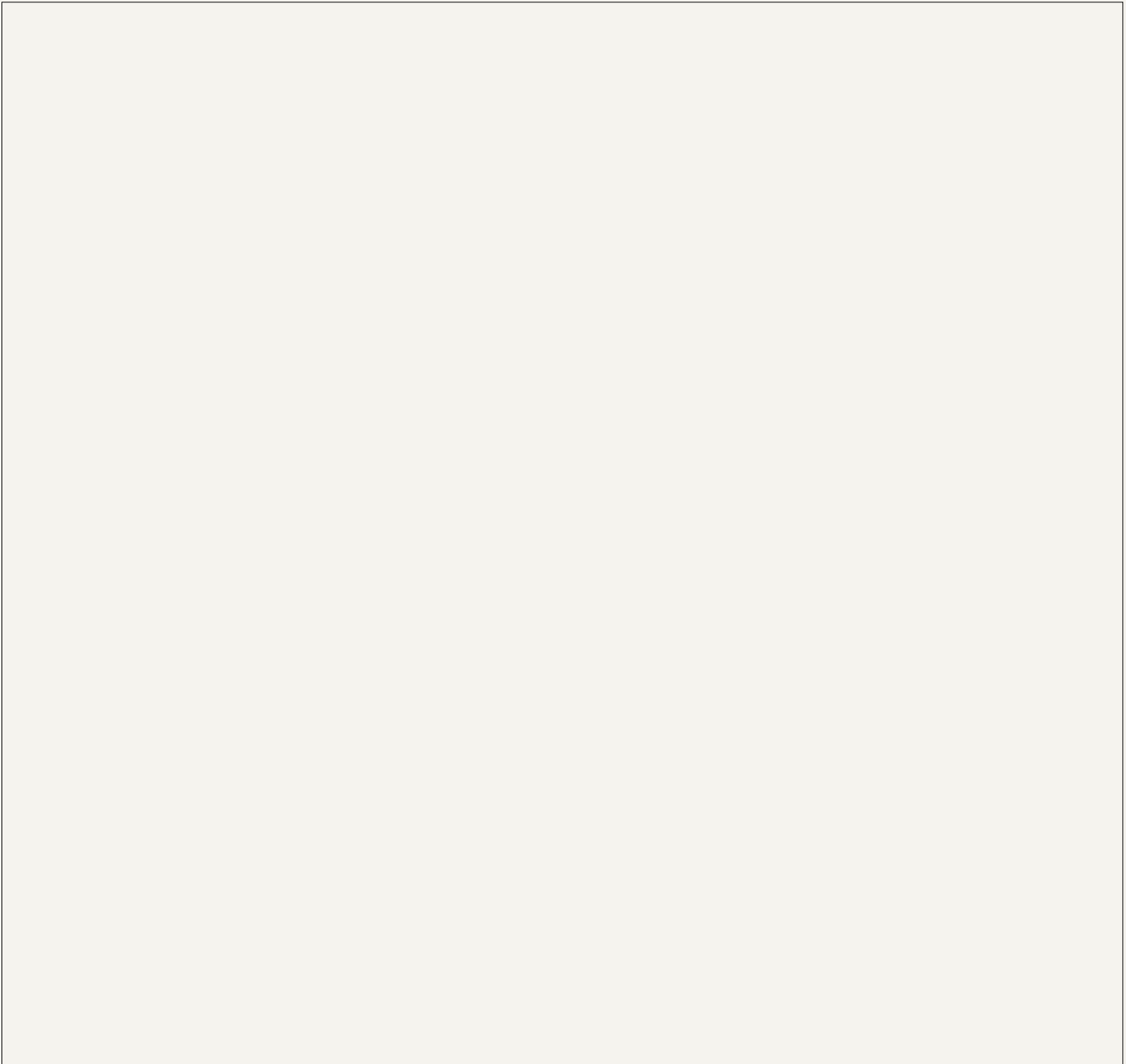
Lantana depressa (Pineland Lantana)
Elizabeth Newland



Stachytarpheta jamaicensis (Porterweed)
Elizabeth Newland



Zamia pumila (Coontie)
Elizabeth Newland



FAMOUS
OUR TRAI
FLORI

WORLD FAMOUS
CONCH TOUR TRAIN
KEY WEST FLORIDA

★TICKETS★



Accessibility: Full Train and
Partial Available Upon Request





TRIO™ BIKE RACK

PRODUCT DATA





TRIO™ BIKE RACK



PRODUCT DATA

The **Trio Bike Rack** is the perfect complement to our Trio product line. Providing an excellent opportunity for design continuity, the Trio Bike Rack draws on the same triangular shape and exaggerated void seen in both our Trio Bench and Trio Lighting. Contemporary in design, its simple yet sculptural form allows it to be integrated into a myriad of settings.

MATERIAL & FINISHES

MATERIAL
<ul style="list-style-type: none"> Body is made of corrosion-resistant cast aluminum with powdercoat finish.

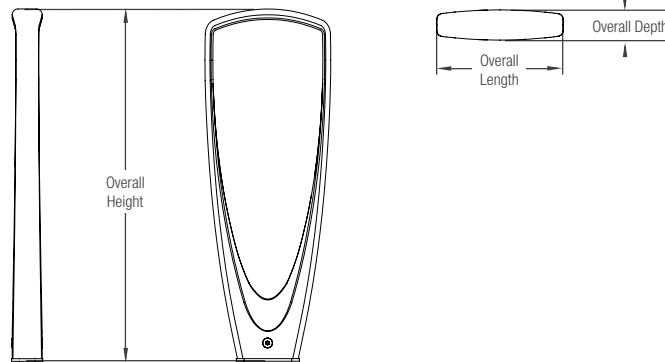
FINISHES
<ul style="list-style-type: none"> Standard colors are Aluminum Texture and Slate Texture; optional colors from the F+S color chart and custom RAL colors are available for an upcharge. Due to the inherent nature of metal castings, gloss powdercoats are not offered for cast components.

INSTALLATION & MAINTENANCE

INSTALLATION
<ul style="list-style-type: none"> Trio Bike Racks must be surface mounted. Anchors and stainless steel screws are included.

MAINTENANCE
<ul style="list-style-type: none"> Metal surfaces can be cleaned as needed using a soft cloth or brush with warm water and a mild detergent. Avoid abrasive cleaners.

NOMINAL DIMENSIONS



OVERALL LENGTH	OVERALL DEPTH	OVERALL HEIGHT	WEIGHT
12" (305 mm)	2.75" (70 mm)	33.5" (851 mm)	24 lbs (10.9 kg)

ENVIRONMENTAL CONSIDERATIONS

- Please refer to the Trio Bike Rack Environmental Data Sheets for detailed environmental impact information.
- Trio aluminum casting has up to 95% recycled content and is fully recyclable.
- Standard powdercoat finishes are no-VOC; non-standard powdercoat finishes are no- or low-VOC, depending on color.
- Low maintenance.

NET PRICING AND ORDERING INFORMATION (pricing does not include freight)

MODEL	DESCRIPTION	NET PRICE
SKTRO	Trio Bike Rack	\$399
	Optional powdercoat color from Forms+Surfaces standard color chart	+ \$200 per color/per order
	Custom RAL powdercoat color	+ min. \$500 per color/per order

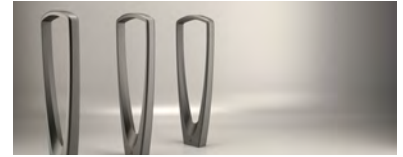
TO ORDER SPECIFY: quantity, model and powdercoat color for body casting

LEAD TIME: 6 to 8 weeks. Shorter lead times may be available upon request. Please contact us to discuss your specific timing requirements.





TRIO™ BIKE RACK



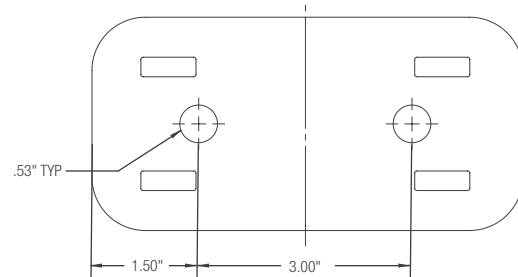
PRODUCT DATA

CONFIGURATION OPTIONS

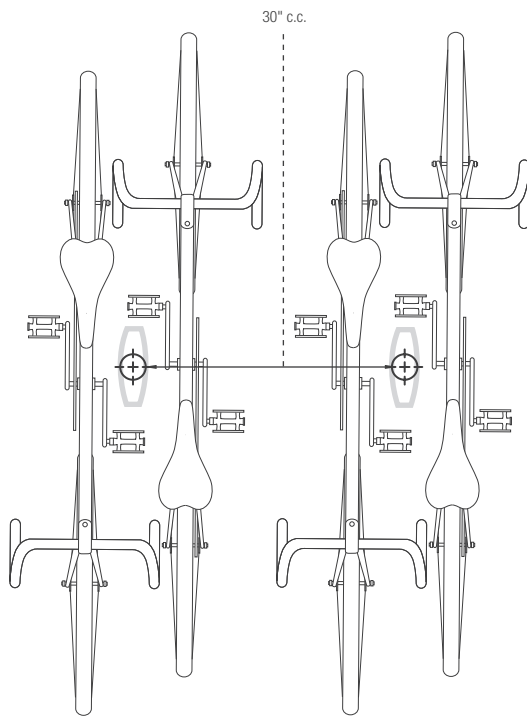
The Trio Bike Rack was designed to allow for a multitude of configuration options to meet your individual needs. Please note that for optimal performance, Forms+Surfaces recommends a 30" center to center placement (see diagrams below for more details).



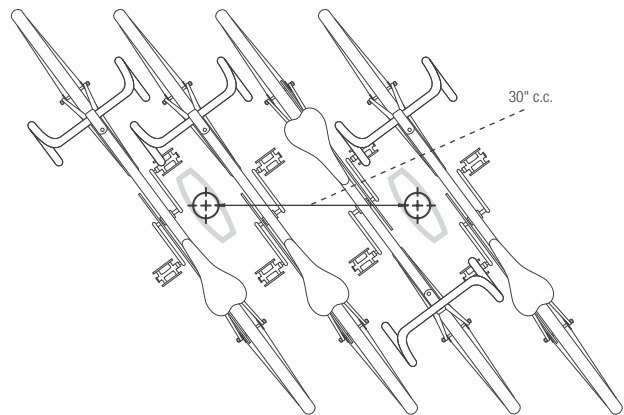
SIDE DETAIL



MOUNTING / HARDWARE DETAIL



CONFIGURATION OPTION A



CONFIGURATION OPTION B





DISPATCH™ LITTER & RECYCLING RECEPTACLE

PRODUCT DATA





DISPATCH™ LITTER & RECYCLING RECEPTACLE

PRODUCT DATA

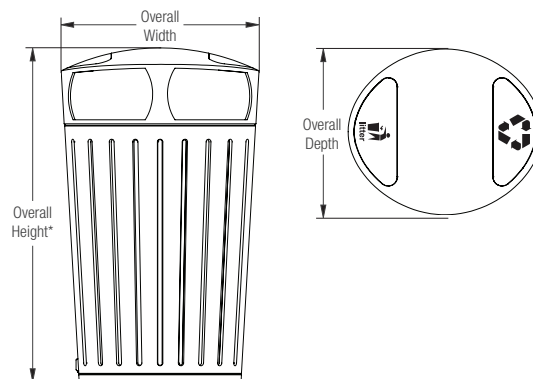
Dispatch combines distinctive design, robust materials and a versatile array of waste stream management options. Receptacles are made of heavy cast aluminum with a hinged side-access door for easy servicing. Available with 36 and 45 gallon capacities in single-stream and split-stream versions, openings can be configured for litter-only, bottles & cans-only, paper-only or for combined litter and recycling. Attractive, durable and highly adaptable, Dispatch is an ideal litter and recycling solution for any public space.

MATERIAL & CONSTRUCTION DETAILS

INSTALLATION & MAINTENANCE

BODY AND LID	CONFIGURATION OPTIONS	LID GRAPHICS	INSTALLATION
<ul style="list-style-type: none"> Body and lid are made of solid cast aluminum with a powdercoat finish. Standard powdercoat colors are Aluminum Texture and Slate Texture; F+S optional colors and custom RAL colors are available for an upcharge. Due to the inherent nature of metal castings, gloss powdercoats are not offered for cast components. 	<ul style="list-style-type: none"> Receptacles are available in 36 and 45 gallon configurations. Single-stream receptacles use a single 36 or 45 gallon liner. Split-stream configurations are divided by an internal baffle plate to create two separate litter and/or recycling streams. 36 gallon receptacles use two 16 gallon half liners; 45 gallon receptacles use two 20 gallon half liners. 	<ul style="list-style-type: none"> Instructional graphics are applied to two sign plates, which are mechanically fastened to the top of each lid. Sign plates are stainless steel with a Satin finish; instructional graphics are Black vinyl. 	<ul style="list-style-type: none"> Receptacles can be used freestanding with a concrete base or surface mounted with or without a concrete base. Anchors and stainless steel mounting screws are provided for surface mounting.
RECYCLING OPENINGS	SIDE ACCESS DOOR AND LATCH	LINERS	MAINTENANCE
<ul style="list-style-type: none"> Openings can be limited to a particular type of recyclable. Along with the standard full litter opening, round bottles & cans and slotted paper openings are available. See details on page 2. 	<ul style="list-style-type: none"> Receptacle opens in a clamshell fashion with half of the cast body serving as a swing-out door. Two stainless steel latch options are available: lift lever or screwdriver-operated recessed access. 	<ul style="list-style-type: none"> Both single-stream and split-stream receptacles use independent, replaceable internal liners designed to be used with or without plastic litter bags. Liners are molded from durable black polyethylene with UL94HB fire rating. 	<ul style="list-style-type: none"> Metal surfaces can be cleaned as needed using a soft cloth or brush with warm water and a mild detergent. Avoid abrasive cleaners.

NOMINAL DIMENSIONS (36 GALLON)



MODEL	OVERALL HEIGHT*	OVERALL WIDTH	OVERALL DEPTH	WEIGHT	INTERNAL CAPACITY
SLDIS-136	43.0" (1092 mm)	25.5" (648 mm)	21.8" (554 mm)	112 lbs (50 kg)	36 gallons (136 liters)
SLDIS-216	43.0" (1092 mm)	25.5" (648 mm)	21.8" (554 mm)	112 lbs (50 kg)	32 (2 x 16) gallons (121 liters)

*NOTE: Concrete base adds 2.75" to overall height



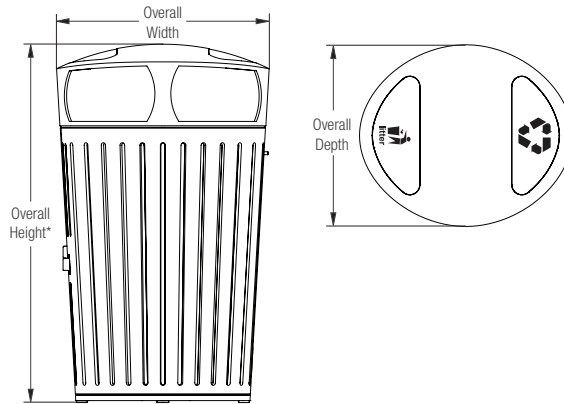


DISPATCH™ LITTER & RECYCLING RECEPTACLE



PRODUCT DATA

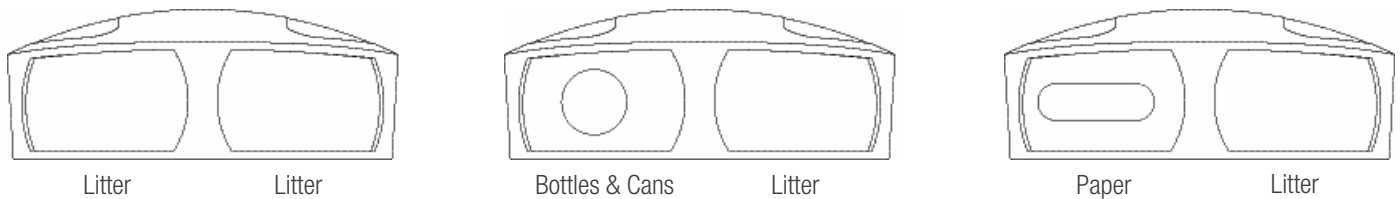
NOMINAL DIMENSIONS (45 GALLON)



MODEL	OVERALL HEIGHT*	OVERALL WIDTH	OVERALL DEPTH	WEIGHT	INTERNAL CAPACITY
SLDIS-145	45.8" (1162 mm)	27" (686 mm)	23" (584 mm)	125 lbs (57 kg)	45 gallons (170 liters)
SLDIS-220	45.8" (1162 mm)	27" (686 mm)	23" (584 mm)	125 lbs (57 kg)	40 (2 x 20) gallons (150 liters)

*NOTE: Concrete base adds 2.75" to overall height

LID OPENING OPTIONS



OPENING	DIMENSIONS (36 GALLON)	DIMENSIONS (45 GALLON)
Litter	9.9" (251 mm) x 6.3" (160 mm)	11.5" (292 mm) x 7.0" (178 mm)
Bottles & Cans	4.5" (114 mm) x 4.5" (114 mm)	4.5" (114 mm) x 4.5" (114 mm)
Paper	8.0" (203 mm) x 2.5" (63 mm)	8.0" (203 mm) x 2.5" (63 mm)

STANDARD GRAPHICS





DISPATCH™ LITTER & RECYCLING RECEPTACLE

PRODUCT DATA

ENVIRONMENTAL CONSIDERATIONS

- Please refer to the Dispatch Environmental Data Sheets for detailed environmental impact information.
- Dispatch Receptacle has up to 90% recycled content.
- All components are fully recyclable.
- Rustproof cast aluminum construction ensures a long product life cycle.
- Standard powdercoat finishes are no-VOC; non-standard powdercoat finishes are no- or low-VOC, depending on color.
- Low maintenance and easy to disassemble.

NET PRICING AND ORDERING INFORMATION (pricing does not include freight)

MODEL	DESCRIPTION	NET PRICE
SLDIS-136	Dispatch Receptacle, 36 gallon, single-stream, one 36 gallon liner	\$1,550
SLDIS-216	Dispatch Receptacle, 36 gallon, split-stream, two 16 gallon half liners	\$1,650
SLDIS-145	Dispatch Receptacle, 45 gallon, single-stream, one 45 gallon liner	\$1,750
SLDIS-220	Dispatch Receptacle, 45 gallon, split-stream, two 20 gallon half liners	\$1,850
	Optional powdercoat color from Forms+Surfaces standard color chart	+ \$200 per color/per order
	Custom RAL powdercoat color	+ minimum \$500 per color/per order
	Add concrete base	+ \$149 per receptacle
	Add recycling openings	+ \$25 per side/per receptacle

TO ORDER SPECIFY: quantity, model, powdercoat color(s), lid graphics, recycle openings (optional), latch option, freestanding or surface mount with or without concrete base

LEAD TIME: 6 to 8 weeks. Shorter lead times may be available upon request. Please contact us to discuss your specific timing requirements.



Superior

Aluminum Picket Fence

SERIES
7000
700



Strong, Durable and Maintenance-Free Beauty!

www.superioraluminum.com

Superior

Series 7000/700 Aluminum Picket Fence

Strong, Durable, and Maintenance-Free Beauty!

Superior Series 7000 and 700 Picket Fence can be found where a touch of elegance, function and security are a must. This **maintenance-free fencing** is an excellent choice for perimeter and pool fencing, as well as dividers on residential, commercial, institutional, multi-housing and municipal installations.

Superior Picket Fence **utilizes all the advantages of aluminum – strong, durable, and rust- and corrosion-free.** These characteristics make it a practical, sound investment for the budget-minded buyer.

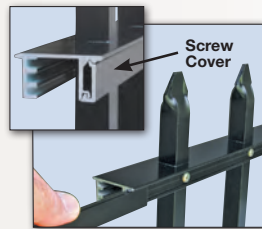
The smart, contemporary design is an added plus. Our unique, no-weld design utilizes simple, cast aluminum fittings or machined openings for a **no-hassle, easy installation.**

To make our fencing even more versatile, cast aluminum ornaments, inserts and scrolls are available to mount on top of posts and on pickets for a custom decorative appearance.

Superior Picket Fence comes with 2", 2 1/2" or 4" square posts and 3/4" square pickets with a formed spear, a cast spear or a flat top. Options for picket spacing include 3", 4 1/2" or 6" centers, as well as custom spacing.

Superior fencing comes in standard 6' lengths, as well as custom lengths, in 2, 3 or 4-line styles. Ordering standard 6' lengths reduces lead times and cost.

Fencing is also available in any height. Standard heights include 60" and 72". For heights above 60", 3 or 4-line styles are recommended.



NEW! Concealed Picket Screws

A new product design for Series 7000 and 700 Fence features a screw cover to conceal picket screws on top and bottom rail assemblies for a cleaner, more streamlined look.

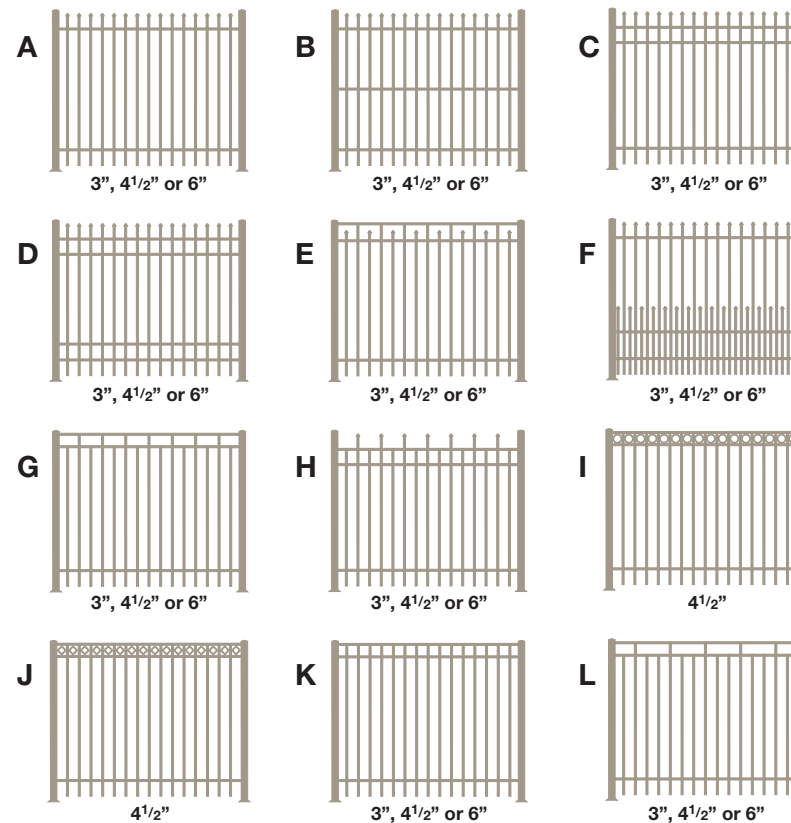
Finishes

Smart, decorative finishes add a distinctive touch. Whether baked-on enamel, anodized or duranodic, these finishes are guaranteed to endure for years of continued service and maintenance-free beauty.



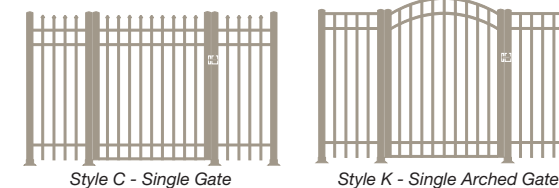
Picket Fence Design Styles

To order, choose design A, B, C, etc., and specify picket center spacing.

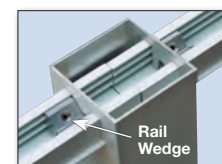


Custom Aluminum Gates

Superior manufactures attractive, aluminum gates to any size and design configuration. The durable, all-welded gate construction coupled with electrostatic painting or anodizing, means years of trouble-free service. Gates can be equipped with standard or custom security locks. See example gate configurations below.



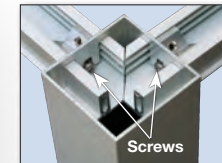
Easy Assembly and Installation!



View of the underside of bottom rail to show rail wedge location.



Tightening rail wedge on shortened section.



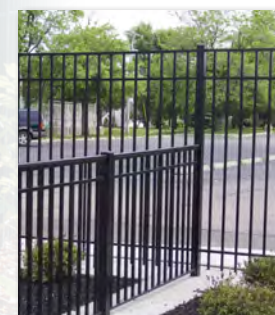
Rail wedge screws to secure corner and end posts.

Series 7000 Picket Fence is not only easy to assemble and install, but the machined post openings and factory assembled sections facilitate quick turn-around and cost savings.

All posts are machined with openings to receive top and bottom rails. If the fence is angled vertically or horizontally, specify the angle so the proper openings can be machined into the post. As assembled fence is inserted into the openings, rail wedges located in the top and bottom rails will ensure proper insertion of 1 1/4" inside the post.

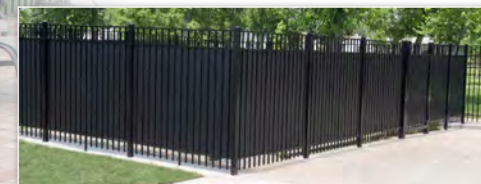
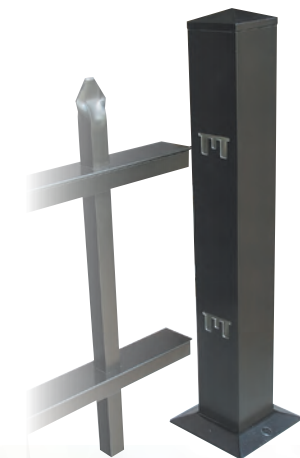
If a fence section or sections need to be shortened, simply saw an equal amount from each rail end with the use of a miter or circular saw. Reinstall and tighten the rail wedge using an 1/8" Allen Wrench on both the top and bottom rails so 1 1/4" protrudes through the post openings.

For securing a corner or end post, a screw is provided for each rail wedge to prevent the post from moving outward.



SERIES 7000 New

Series 7000 Picket Fence features machined post openings, eliminating the need for brackets. The result is a clean, rigid design with added strength.



Ask about snap-in privacy liner to hide equipment and/or items out of view.

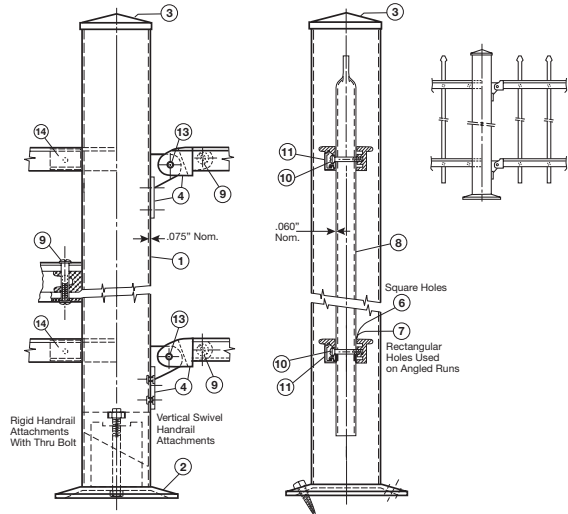
Assembly Identification

Component Parts

SERIES 7000



Note: Series 7000 Fence is assembled with machined post openings.

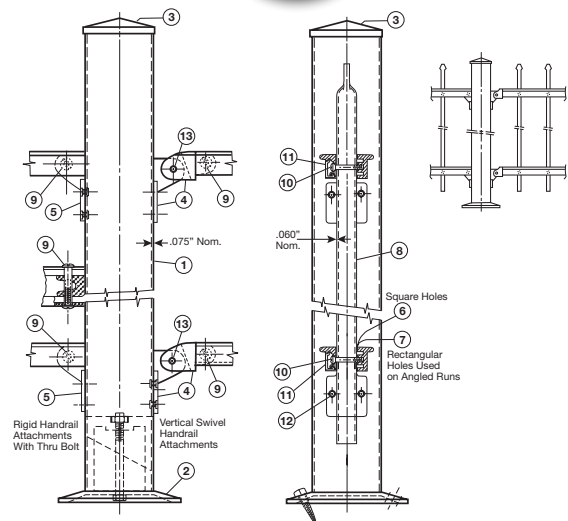


- 1. 990 2 1/2" Tube .075" Wall
- 2. 957 Base Assembly
- 3. 950 Post Cap
- 4. 956 Swivel Brkt. Assembly
- 5. 940 End Bracket - Rigid
- 6. 903 Rail - Square Hole
- 7. 904 Rail - Rectangular Hole
- 8. 3/4" Square Picket
- 9. 912 1/4" Binder Block
- 10. 910 Picket Screws
- 11. Screw Cover
- 12. 915 5/32" Dia. Rivets
- 13. 3/16" Dia. "Rollpin"
- 14. Rail Wedge

SERIES 700

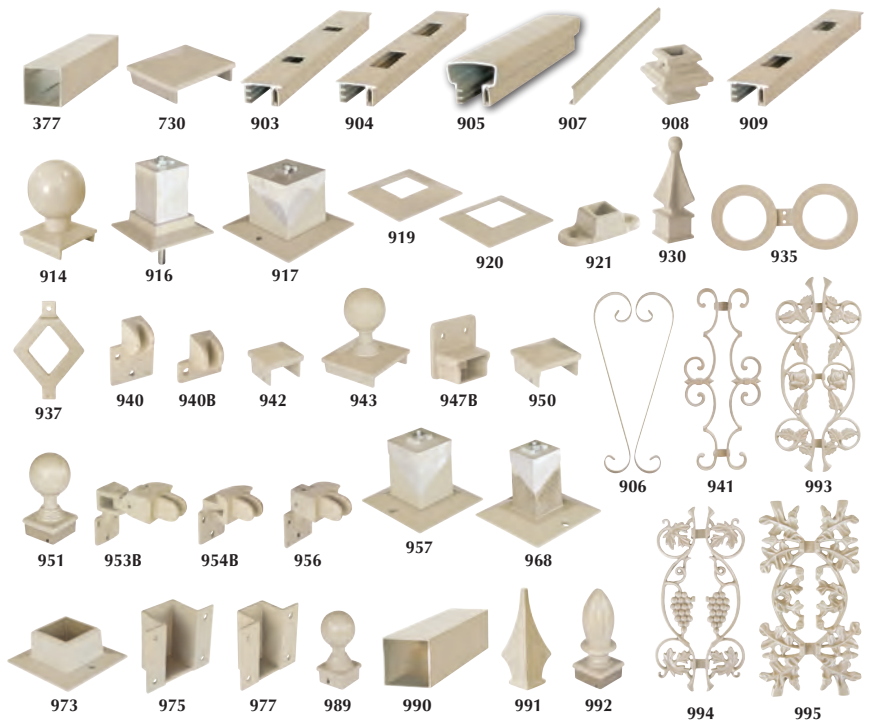


Note: Series 700 Fence is assembled with brackets.



Superior Aluminum Products, Inc.

555 East Main St. • P.O. Box 430 • Russia, OH 45363
 Ph: 937-526-4065 • Fax: 937-526-3904
 info@superioraluminum.com
 www.superioraluminum.com



Parts Description

- 377 2" Sq. - 16' white only & 18' Lgths.
- 730 Cap for 4" Post
- 903 Bottom Rail (Sq. Hole)
1 5/8" w x 3/4" h,
16' white only & 18' Lgths.
- 904 Bottom Rail (Rect. Hole)
1 5/8" w x 3/4" h,
16' white only & 18' Lgths.
- 905 Top Rail - 2" w x 1 5/8" h
18' & 24' Lgths.
- 906 17" Heart Scroll
- 907 Screw Cover (For Top & Bott. Rail)
18' & 24' Lgths.
- 908 Picket Collar
- 909 Bottom Rail (1 1/2" w Hole)
16' white only & 18' Lgths.
- 914 Post Ball Cap for 4" Post with
4" Diameter Ball
- 916 2 1/2" Wedge Base with Stud
- 917 Wedge Base for 4" Post
- 919 2" Slip Over Base
- 920 2 1/2" Slip Over Base
- 921 3/4" Square Base
- 930 Cast Picket Spear - 4" High
- 935 3 3/4" OD Double Ring
- 937 3 3/4" Cast Diamond
- 940 End Brkt. for Top & Bottom Rail
- 940B End Brkt. for #903 Bottom Rail
- 941 17" Cast "Fleur De-Lis" Insert
- 942 Cap for 2" Post
- 943 Post Ball Cap for 4" Post with
2 1/2" Diameter Ball
- 947B Adj. End Fitting Bottom
- 950 Cap for 2 1/2" Post
- 951 Post Ball Cap for 2 1/2" Post
- 953B 2-Way Swivel Bottom
- 954B Horiz. Swivel Brkt. Bottom
- 956 Vertical Swivel Bottom
- 957 Base for 2 1/2" Post (wedge type)
- 968 Base for 2" Post (Wedge Type)
- 973 Heavy Duty Base for 2 1/2" Post
- 975 Side Mount Brkt. for 2 1/2" Post
- 977 Side Mount Bracket for 2" Post
- 989 Post Ball Cap for 2" Post
- 990 2 1/2" Sq. - 16' white only & 18' Lgths.
- 991 Picket Spear
- 992 Post Finial for 2 1/2" Post
- 993 Cast Rose Snap-on Picket Insert
- 994 Cast Grape Snap-on Picket Insert
- 995 Cast Oak Snap-on Picket Insert

Specifications

MATERIALS - All rails, posts, and pickets shall be formed from 6063-T6 extruded aluminum alloys. All railing accessories shall be cast from ANSI 713 alloy. All exposed fasteners used in the system shall be aluminum or stainless steel.

INSTALLATION - The fencing system shall consist of 2 1/2" or 4" square posts that can be either base mounted or embedded into concrete. The rails shall be a minimum of 1 5/8" wide. Pickets shall be 3/4" square on 3", 4 1/2", or 6" centers.

Noticing

Public Meeting Notice

The Historic Architectural Review Commission will hold a public hearing at 5:30 p.m., September 25, 2012 at Old City Hall, 510 Greene Street, Key West, Florida.

The purpose of the hearing will be to consider a request for:

Caroline Street Improvement Project

Caroline Street

Applicant- City of Key West

H12-01-1520

If you wish to see the application or have any questions, you may visit the Planning Department during regular office hours at 3140 Flagler Avenue, call 809-3723 or visit our website at <http://keywest.legistar.com/Calendar.aspx>

THIS NOTICE SHOULD NOT BE REMOVED FROM THE SITE UNTIL HARC FINAL DETERMINATION.

HARC POSTING AFFIDAVIT

STATE OF FLORIDA:
COUNTY OF MONROE:

BEFORE ME, the undersigned authority, personally appeared Wayne Giordiano, who, first being duly sworn, on oath, depose and says that the following statements are true and correct to the best of his/her knowledge and belief:

1. That a legal notice for Public Notice of Hearing of the Historic Architectural Review Commission (HARC) was placed on the following address:
Caroline Street Project on the 18th day of September, 2012.

This legal notice(s) contained an area of at least 8.5"x11".

The property was posted to notice a public hearing before the Key West Historic Architectural Review Commission to be held on September 25, 2012.

The legal notice(s) is/are clearly visible from the public street adjacent to the property.

The Certificate of Appropriateness number for this legal notice is H12-01-1520.

2. A photograph of that legal notice posted in the property is attached hereto.

Signed Name of Affiant:

WJ
Date: September 18, 2012

Address: 3140 PLACEN

City: KEY WEST

State, Zip: FL. 33040.

The forgoing instrument was acknowledged before me on this 18th day of September, 2012.

By (Print name of Affiant) Wayne Giordiano
who is personally known to me ~~or has produced~~
~~as identification~~ and who did take an oath.

NOTARY PUBLIC

Sign Name: Jo Bennett

Print Name: Jo Bennett

Notary Public - State of Florida (seal)

My Commission Expires: May 26, 2015





Public Meeting Notice