



BERMELLO AJAMIL & PARTNERS INC

Architecture • Engineering • Planning
Interior Design • Landscape Architecture
2601 South Bayshore Drive
Suite 1000
Miami, Florida 33133
(305) 859-2050
Fax (305) 860-3700

PREPARED FOR/OWNER:
CITY OF KEY WEST, FL
P. O. BOX 1409
3140 FLAGLER AVENUE
KEY WEST, FL 33041



PROJECT NAME:

TRUMAN WATERFRONT PARK

PROJECT LOCATION/ADDRESS:
**TRUMAN WATERFRONT PARK
WEST OF FORT STREET AND THE
TRUMAN ANNEX DEVELOPMENT,
NORTH OF KEY WEST NAVAL BASE**

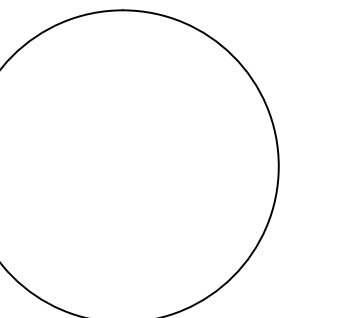
SUB-CONSULTANT INFORMATION:



HUFSEY, NICOLAIDES, GARCIA &
SUAREZ CONSULTING ENGINEERS
4800 S.W. 74th Court, Miami, Florida 33155
(305) 270-9935 Fax (305) 665-5891
HN&GS # 12-0009

□ ENRIQUE J. SUAREZ, P.E. (MECHANICAL)
FL REG.#0015794
□ CARLOS GARCIA, P.E. (ELECTRICAL)
FL REG.#0014104

PROFESSIONAL SEAL:



ANTHONY A. SCHULZ, P.E.
FL REG. #0060762

SUBMITTAL DESCRIPTION / MILESTONE:

**DEVELOPMENT
APPLICATION
March 3, 2014**

REVISIONS:
1 02/22/2013

DRAWING SHEET INFORMATION

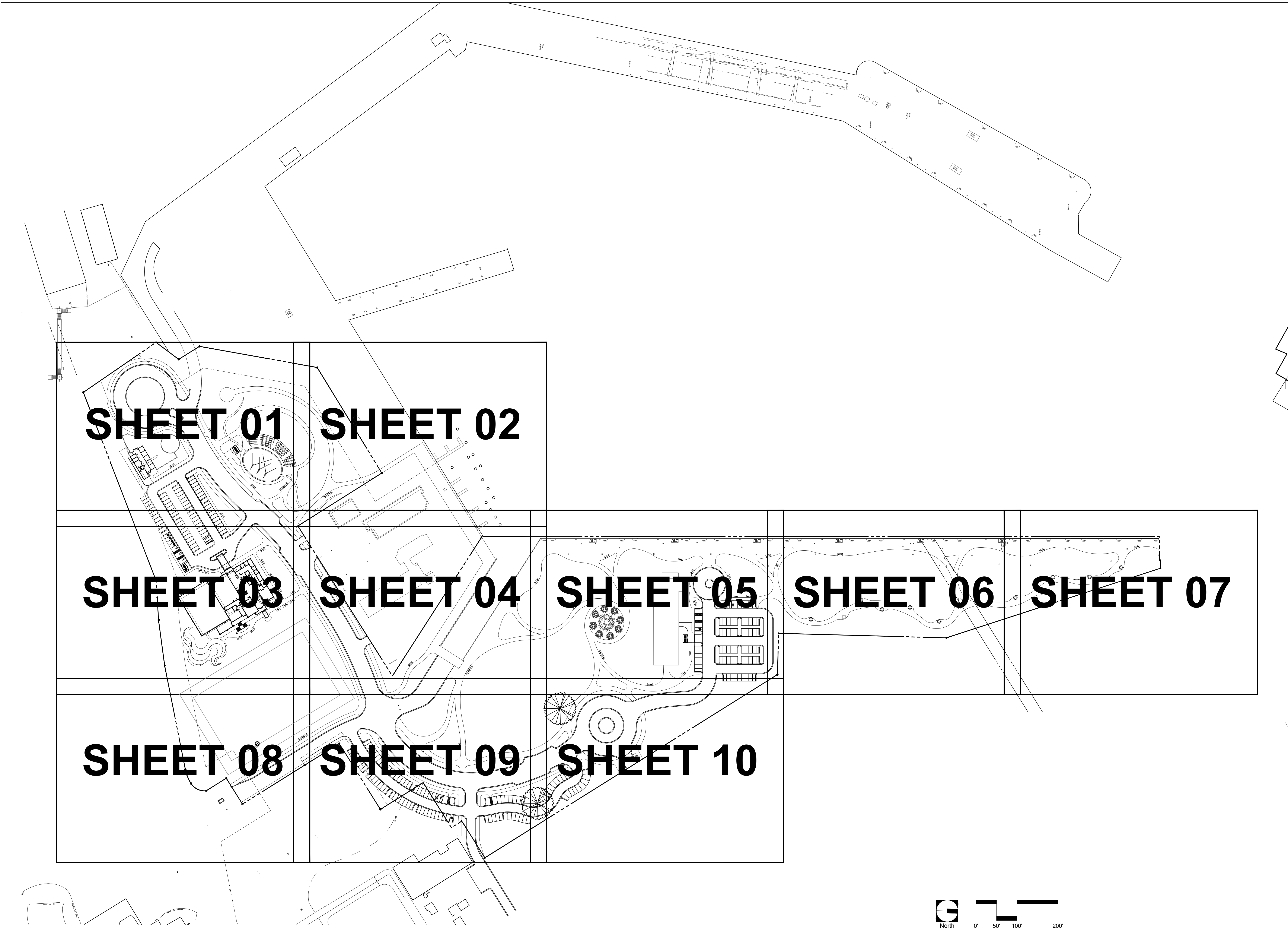
BA PROJECT NO.: 12010
SCALE: 1" = 100'-0"
DATE: January 14, 2013
DRAWN BY: CGC
CHECKED BY: AS
CADD FILE: X Truman Waterfront Base.dwg

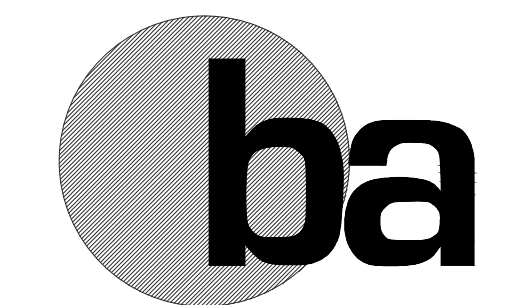
DRAWING TITLE:

**ELECTRICAL
PLAN
SHEET KEY**

SHEET NO.

EE-00





BERMELLO AJAMIL & PARTNERS INC

Architecture • Engineering • Planning
Interior Design • Landscape Architecture
2601 South Bayshore Drive
Suite 1000
Miami, Florida 33133
(305) 859-2050
Fax (305) 860-3700

PREPARED FOR/OWNER:
CITY OF KEY WEST, FL
P. O. BOX 1409
3140 FLAGLER AVENUE
KEY WEST, FL 33041



PROJECT NAME:
TRUMAN WATERFRONT PARK

PROJECT LOCATION/ADDRESS:
TRUMAN WATERFRONT PARK
WEST OF FORT STREET AND THE
TRUMAN ANNEX DEVELOPMENT,
NORTH OF KEY WEST NAVAL BASE

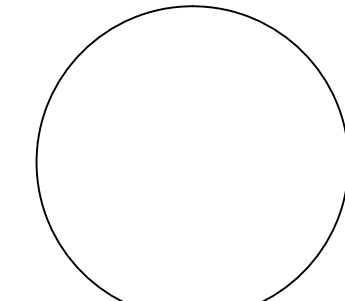
SUB-CONSULTANT INFORMATION:



HUFSEY NICOLAIDES GARCIA &
SUAREZ CONSULTING ENGINEERS
4800 S.W. 74th Court, Miami, Florida 33155
(305) 270-9935 Fax (305) 665-5891
HNGS # 12-0009

ENRIQUE J. SUAREZ, P.E. (MECHANICAL)
FL REG.#0019794
 CARLOS GARCIA, P.E. (ELECTRICAL)
FL REG.#0014104

PROFESSIONAL SEAL:



ANTHONY A. SCHULZ, P.E.
FL REG. #0060762

SUBMITTAL DESCRIPTION / MILESTONE:

DEVELOPMENT APPLICATION
March 3, 2014

REVISIONS:

1	02/22/2013	

DRAWING SHEET INFORMATION

BA PROJECT NO.: 12010
SCALE: AS NOTED
DATE: January 14, 2013
DRAWN BY: CGC
CHECKED BY: AS
CADD FILE: X Truman Waterfront Base.dwg

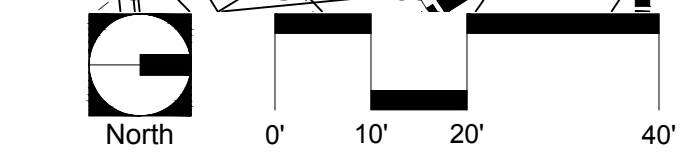
DRAWING TITLE:
LIGHTING PLAN

SHEET NO.

EE-01

MATCHLINE - SHEET 01
MATCHLINE - SHEET 03

MATCHLINE - SHEET 01
MATCHLINE - SHEET 03





BERMELLO AJAMIL & PARTNERS INC

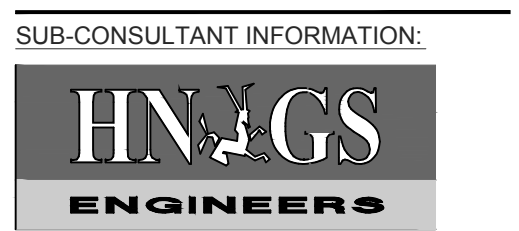
Architecture • Engineering • Planning
Interior Design • Landscape Architecture
2601 South Bayshore Drive
Suite 1000
Miami, Florida 33133
(305) 859-2050
Fax (305) 860-3700

PREPARED FOR/OWNER:
CITY OF KEY WEST, FL
P. O. BOX 1409
3140 FLAGLER AVENUE
KEY WEST, FL 33041



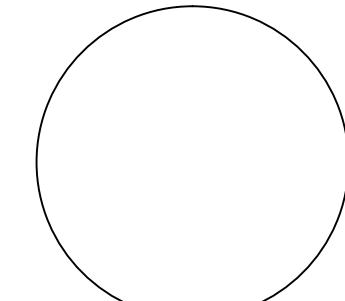
PROJECT NAME:
TRUMAN WATERFRONT PARK

PROJECT LOCATION/ADDRESS:
**TRUMAN WATERFRONT PARK
WEST OF FORT STREET AND THE
TRUMAN ANNEX DEVELOPMENT,
NORTH OF KEY WEST NAVAL BASE**



HUFSEY NICOLAIDES GARCIA & SUAREZ CONSULTING ENGINEERS
4800 S.W. 74th Court, Miami, Florida 33155
(305) 270-9935 Fax (305) 665-5891
HNGS # 12-0009
 ENRIQUE J. SUAREZ, P.E. (MECHANICAL)
FL REG.#0015794
 CARLOS GARCIA, P.E. (ELECTRICAL)
FL REG.#0014104

PROFESSIONAL SEAL:



ANTHONY A. SCHULZ, P.E.
FL REG. #0060762

SUBMITTAL DESCRIPTION / MILESTONE:

**DEVELOPMENT APPLICATION
March 3, 2014**

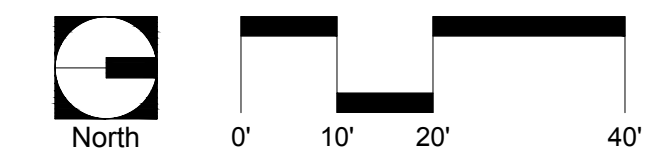
REVISIONS:

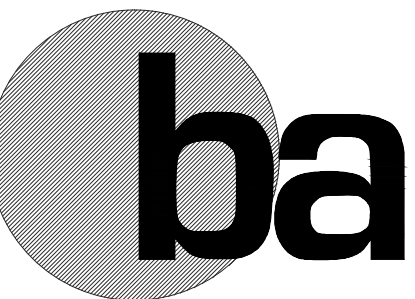
1	02/22/2013	

DRAWING SHEET INFORMATION
BA PROJECT NO.: 12010
SCALE: AS NOTED
DATE: January 14, 2013
DRAWN BY: CGC
CHECKED BY: AS
CADD FILE: X Truman Waterfront Base.dwg

DRAWING TITLE:
LIGHTING PLAN

SHEET NO.
EE-02





BERMELLO AJAMIL & PARTNERS INC

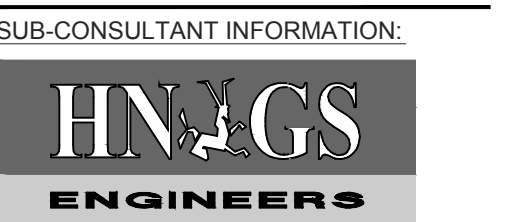
Architecture • Engineering • Planning
Interior Design • Landscape Architecture
2601 South Bayshore Drive
Suite 1000
Miami, Florida 33133
(305) 859-2050
Fax (305) 860-3700

PREPARED FOR/OWNER:
CITY OF KEY WEST, FL
P. O. BOX 1409
3140 FLAGLER AVENUE
KEY WEST, FL 33041



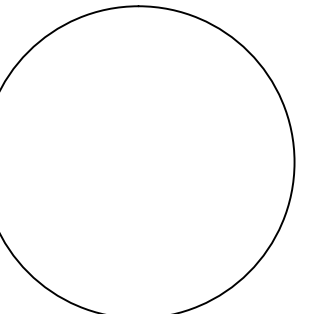
PROJECT NAME:
TRUMAN WATERFRONT PARK

PROJECT LOCATION/ADDRESS:
TRUMAN WATERFRONT PARK
WEST OF FORT STREET AND THE
TRUMAN ANNEX DEVELOPMENT,
NORTH OF KEY WEST NAVAL BASE



HUFSEY NICOLAIDES GARCIA &
SUAREZ CONSULTING ENGINEERS
4800 S.W. 74th Court, Miami, Florida 33155
(305) 270-9935 Fax (305) 665-5891
HNGS # 12-0009
□ ENRIQUE J. SUAREZ, P.E. (MECHANICAL)
FL REG.#0015794
□ CARLOS GARCIA, P.E. (ELECTRICAL)
FL REG.#0014104

PROFESSIONAL SEAL:



ANTHONY A. SCHULZ, P.E.
FL REG. #0060762

SUBMITTAL DESCRIPTION / MILESTONE:

**DEVELOPMENT
APPLICATION
March 3, 2014**

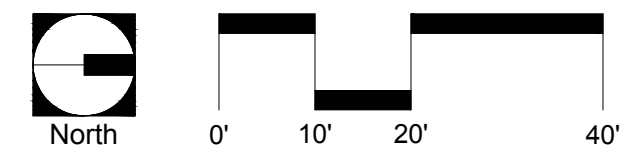
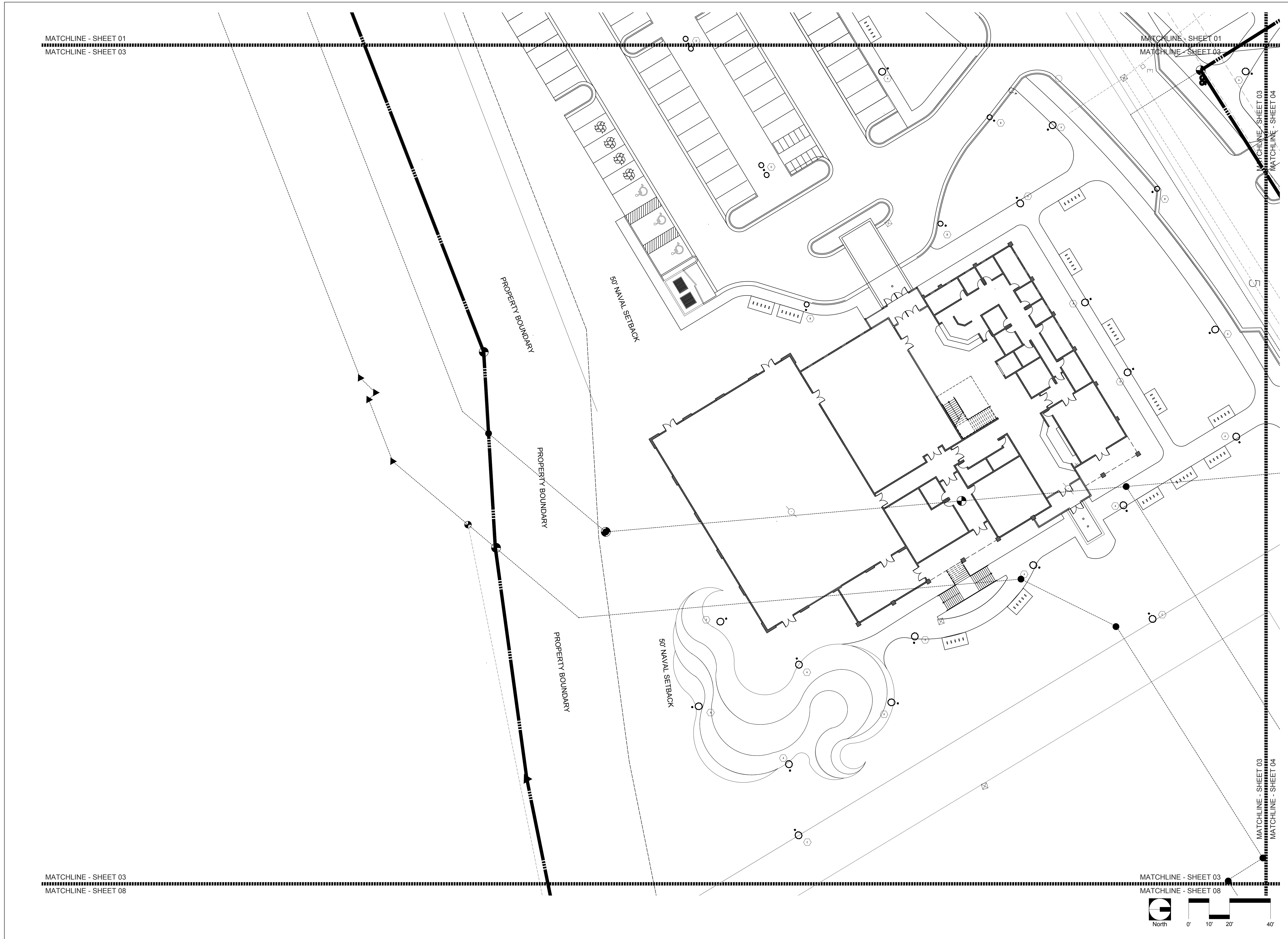
REVISIONS:
1 02/22/2013

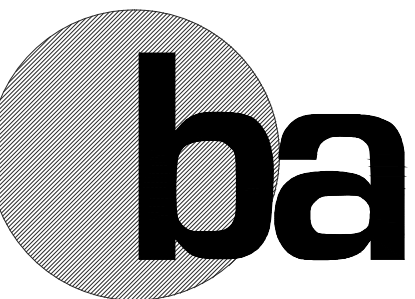
DRAWING SHEET INFORMATION
BA PROJECT NO.: 12010
SCALE: AS NOTED
DATE: January 14, 2013
DRAWN BY: CGC
CHECKED BY: AS
CADD FILE: X Truman Waterfront Base.dwg

DRAWING TITLE:
LIGHTING PLAN

SHEET NO.

EE-03





BERMELLO AJAMIL & PARTNERS INC

Architecture • Engineering • Planning
Interior Design • Landscape Architecture
2601 South Bayshore Drive
Suite 1000
Miami, Florida 33133
(305) 859-2050
Fax (305) 860-3700

PREPARED FOR/OWNER:
CITY OF KEY WEST, FL
P. O. BOX 1409
3140 FLAGLER AVENUE
KEY WEST, FL 33041



PROJECT NAME:
TRUMAN WATERFRONT PARK

PROJECT LOCATION/ADDRESS:
**TRUMAN WATERFRONT PARK
WEST OF FORT STREET AND THE
TRUMAN ANNEX DEVELOPMENT,
NORTH OF KEY WEST NAVAL BASE**

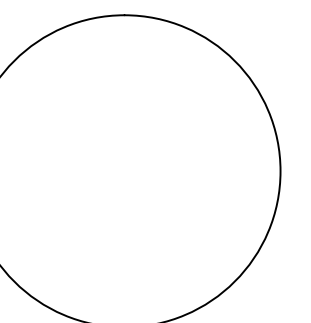
SUB-CONSULTANT INFORMATION:



HUFSEY NICOLAIDES GARCIA &
SUAREZ CONSULTING ENGINEERS
4800 S.W. 74th Court, Miami, Florida 33155
(305) 270-9935 Fax (305) 665-5891
HNGS # 12-0009

ENRIQUE J. SUAREZ, P.E. (MECHANICAL)
FL REG.#0015794
 CARLOS GARCIA, P.E. (ELECTRICAL)
FL REG.#0014104

PROFESSIONAL SEAL:



ANTHONY A. SCHULZ, P.E.
FL REG. #0060762

SUBMITTAL DESCRIPTION / MILESTONE:

**DEVELOPMENT
APPLICATION
March 3, 2014**

REVISIONS:

1	02/22/2013	

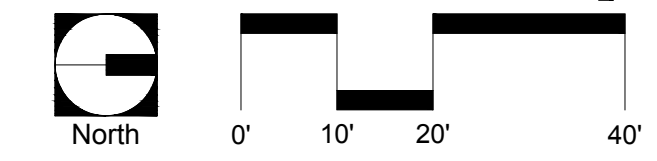
DRAWING SHEET INFORMATION

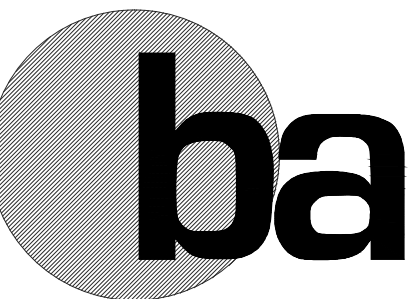
BA PROJECT NO.: 12010
SCALE: AS NOTED
DATE: January 14, 2013
DRAWN BY: CGC
CHECKED BY: AS
CADD FILE: X:\Truman Waterfront Base.dwg

DRAWING TITLE:
LIGHTING PLAN

SHEET NO.

EE-04





BERMELLO AJAMIL & PARTNERS INC

Architecture • Engineering • Planning
Interior Design • Landscape Architecture
2601 South Bayshore Drive
Suite 1000
Miami, Florida 33133
(305) 859-2050
Fax (305) 860-3700

PREPARED FOR/OWNER:
CITY OF KEY WEST, FL
P. O. BOX 1409
3140 FLAGLER AVENUE
KEY WEST, FL 33041



PROJECT NAME:
TRUMAN WATERFRONT PARK

PROJECT LOCATION/ADDRESS:
**TRUMAN WATERFRONT PARK
WEST OF FORT STREET AND THE
TRUMAN ANNEX DEVELOPMENT,
NORTH OF KEY WEST NAVAL BASE**

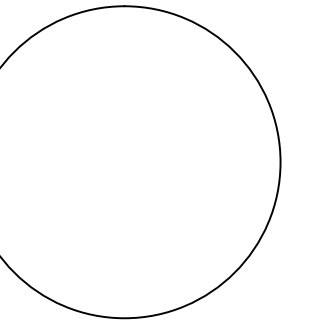
SUB-CONSULTANT INFORMATION:



HUFSEY NICOLAIDES GARCIA &
SUAREZ CONSULTING ENGINEERS
4800 S.W. 74th Court, Miami, Florida 33155
(305) 270-9935 Fax (305) 665-5891
HNGS # 12-0009

ENRIQUE J. SUAREZ, P.E. (MECHANICAL)
FL REG.#0015794
 CARLOS GARCIA, P.E. (ELECTRICAL)
FL REG.#0014104

PROFESSIONAL SEAL:



ANTHONY A. SCHULZ, P.E.
FL REG. #0060762

SUBMITTAL DESCRIPTION / MILESTONE:

**DEVELOPMENT
APPLICATION
March 3, 2014**

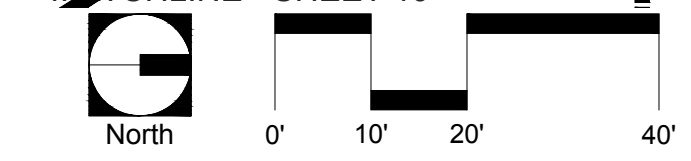
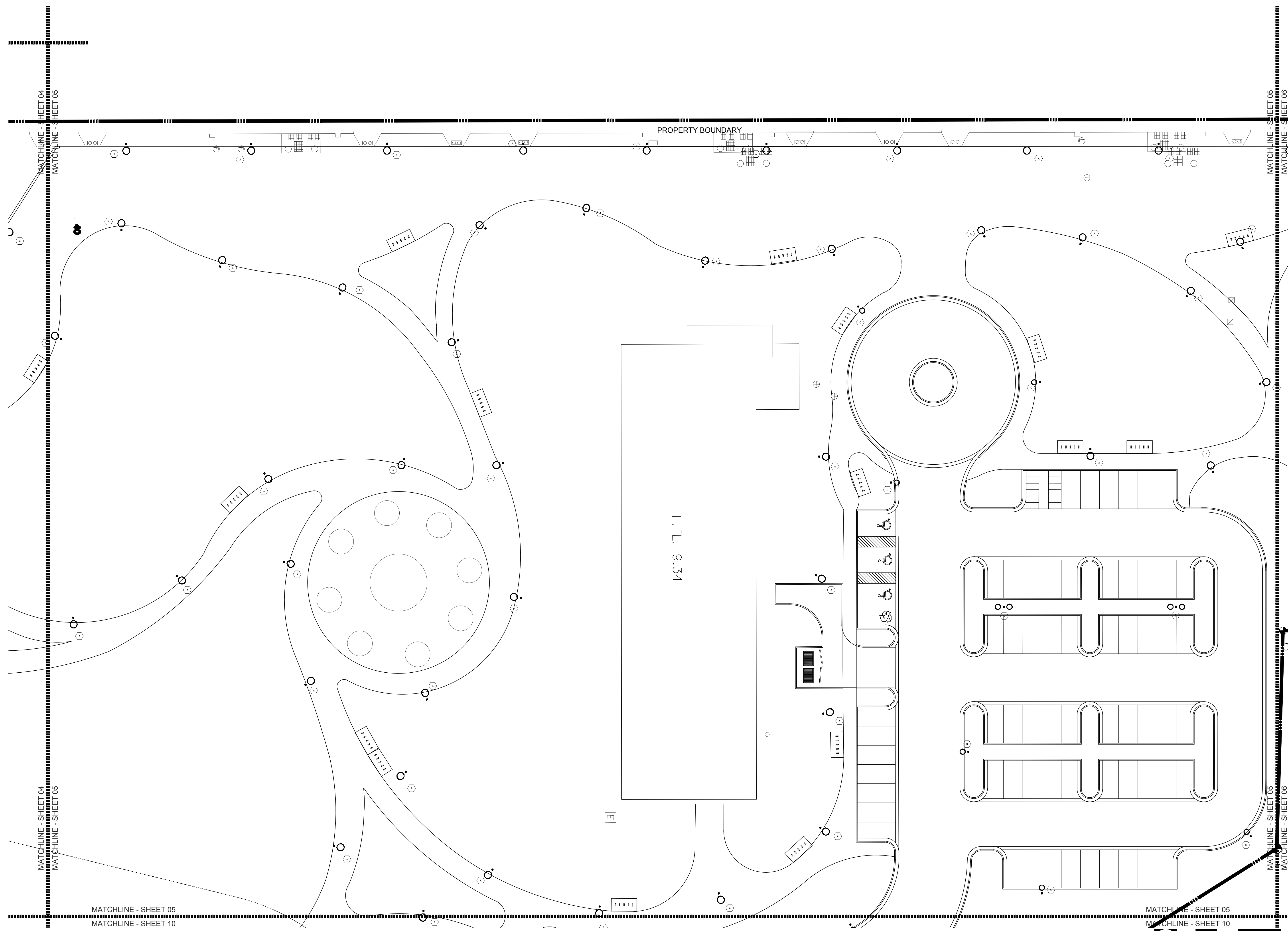
REVISIONS:
1 02/22/2013

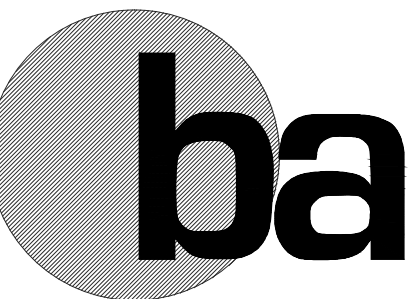
DRAWING SHEET INFORMATION
BA PROJECT NO.: 12010
SCALE: AS NOTED
DATE: January 14, 2013
DRAWN BY: CGC
CHECKED BY: AS
CADD FILE: X Truman Waterfront Base.dwg

DRAWING TITLE:
LIGHTING PLAN

SHEET NO.

EE-05





BERMELLO AJAMIL & PARTNERS INC

Architecture • Engineering • Planning
Interior Design • Landscape Architecture
2601 South Bayshore Drive
Suite 1000
Miami, Florida 33133
(305) 859-2050
Fax (305) 860-3700

PREPARED FOR/OWNER:
CITY OF KEY WEST, FL
P. O. BOX 1409
3140 FLAGLER AVENUE
KEY WEST, FL 33041



PROJECT NAME:
TRUMAN WATERFRONT PARK

PROJECT LOCATION/ADDRESS:
**TRUMAN WATERFRONT PARK
WEST OF FORT STREET AND THE
TRUMAN ANNEX DEVELOPMENT,
NORTH OF KEY WEST NAVAL BASE**

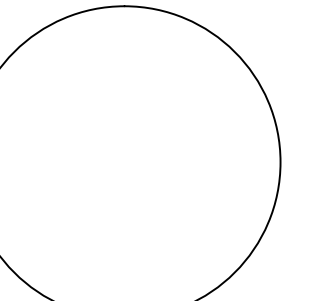
SUB-CONSULTANT INFORMATION:



HUFSEY NICOLAIDES GARCIA &
SUAREZ CONSULTING ENGINEERS
4800 S.W. 74th Court, Miami, Florida 33155
(305) 270-9935 Fax (305) 665-5891
HNGS # 12-0009

□ ENRIQUE J. SUAREZ, P.E. (MECHANICAL)
FL REG.#0015794
□ CARLOS GARCIA, P.E. (ELECTRICAL)
FL REG.#0014104

PROFESSIONAL SEAL:



ANTHONY A. SCHULZ, P.E.
FL REG. #0060762

SUBMITTAL DESCRIPTION / MILESTONE:

**DEVELOPMENT APPLICATION
March 3, 2014**

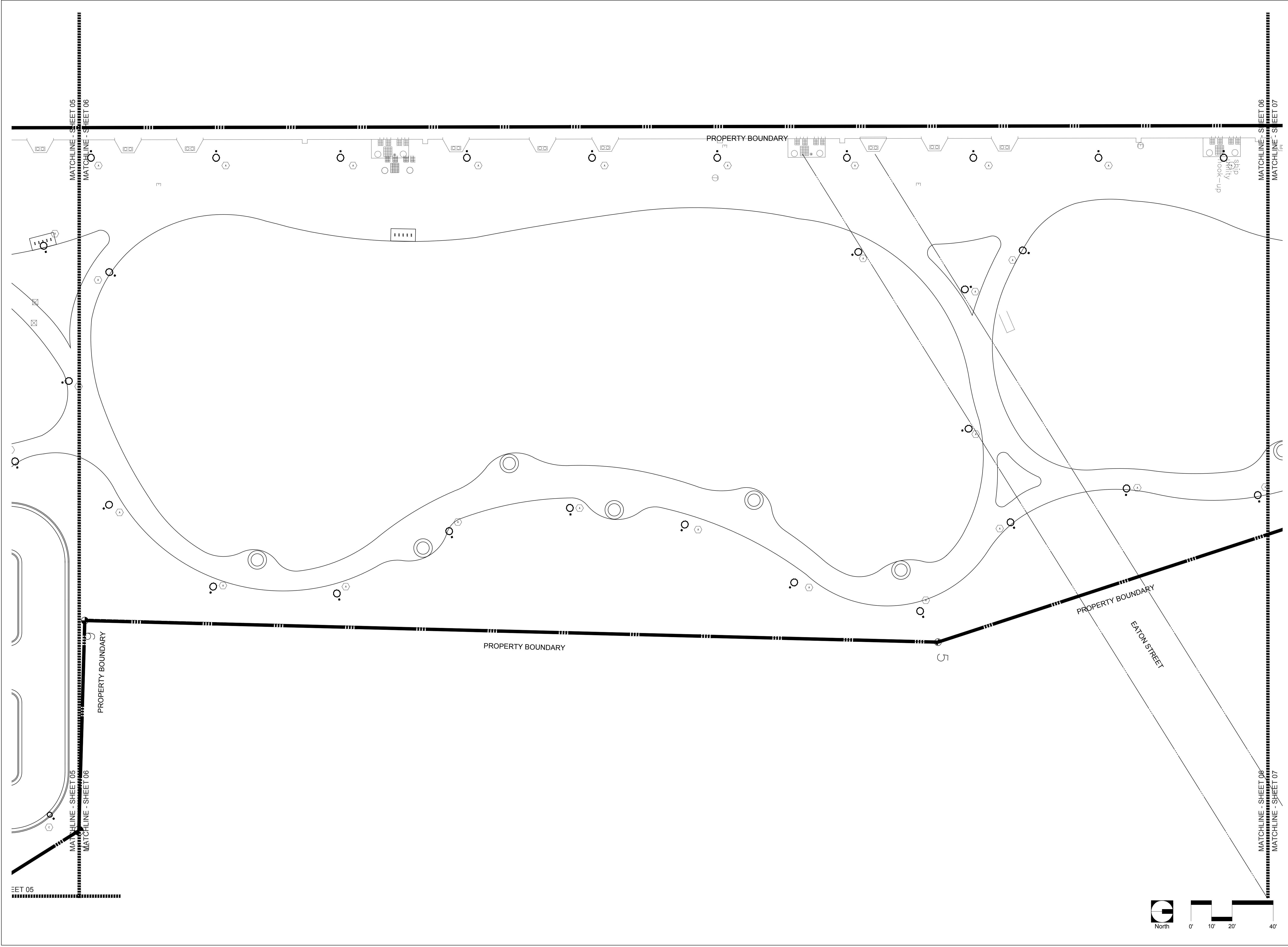
REVISIONS:
1 02/22/2013

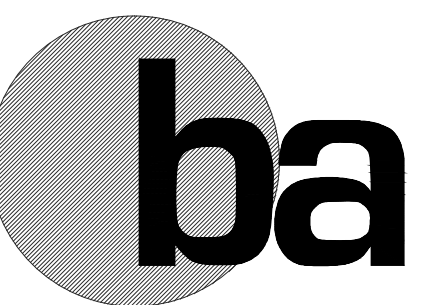
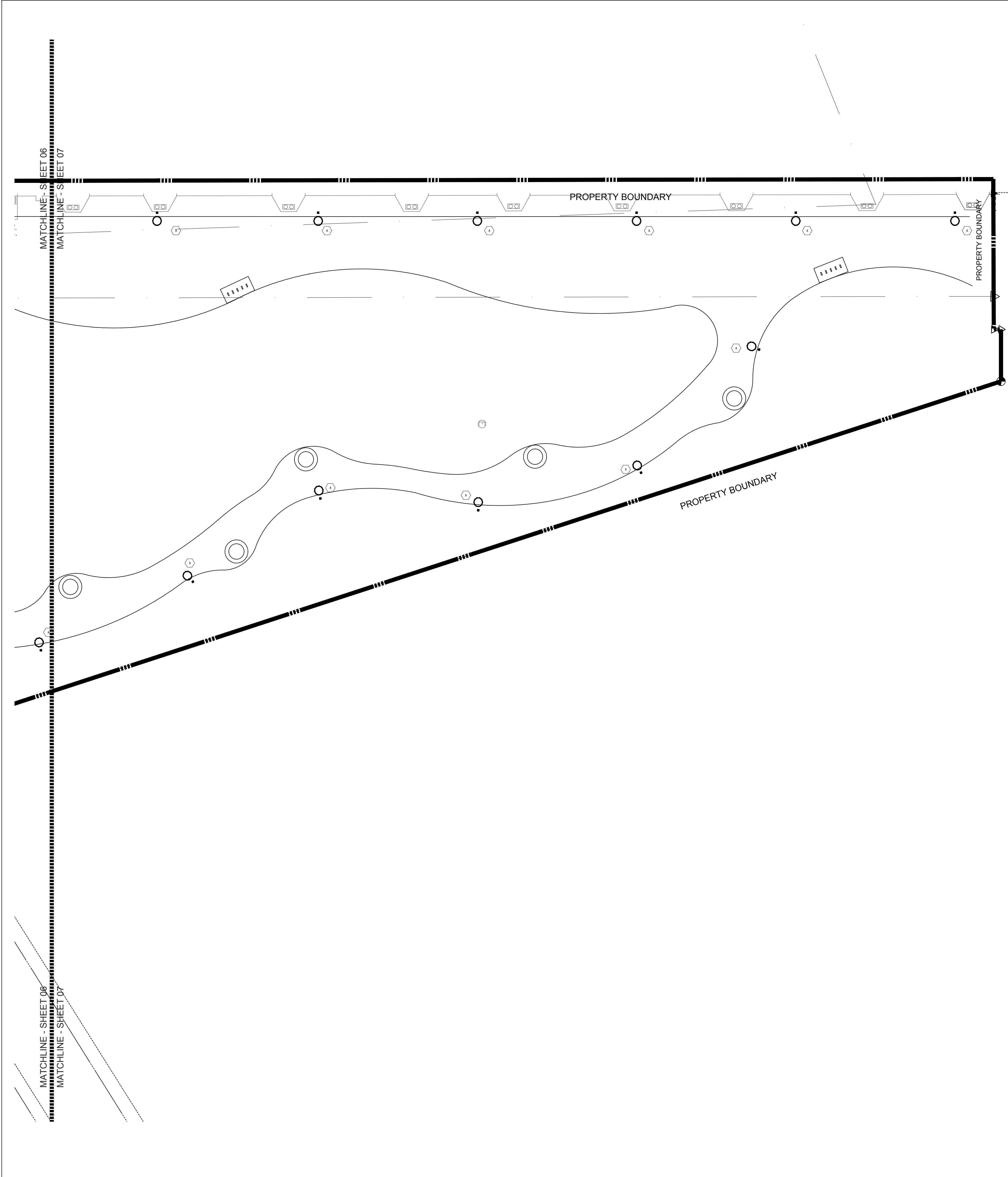
DRAWING SHEET INFORMATION
BA PROJECT NO.: 12010
SCALE: AS NOTED
DATE: January 14, 2013
DRAWN BY: CGC
CHECKED BY: AS
CADD FILE: X Truman Waterfront Base.dwg

DRAWING TITLE:
LIGHTING PLAN

SHEET NO.

EE-06





**BERMELLO AJAMIL
& PARTNERS • INC**

Architecture • Engineering • Planning
Interior Design • Landscape Architecture
2601 South Bayshore Drive
Suite 1000
Miami, Florida 33133
(305) 859-2050
Fax (305) 860-3700

PREPARED FOR/OWNER:
CITY OF KEY WEST, FL
P. O. BOX 1409
3140 FLAGLER AVENUE
KEY WEST, FL 33041



PROJECT NAME:
**TRUMAN
WATERFRONT
PARK**

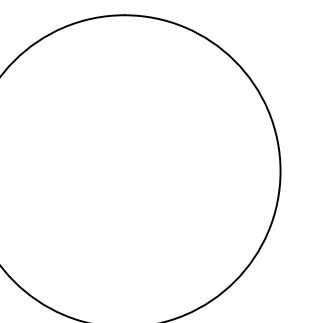
PROJECT LOCATION/ADDRESS:
**TRUMAN WATERFRONT PARK
WEST OF FORT STREET AND THE
TRUMAN ANNEX DEVELOPMENT,
NORTH OF KEY WEST NAVAL BASE**

SUB-CONSULTANT INFORMATION:



HUFSEY NICOLAIDES GARCIA &
SUAREZ CONSULTING ENGINEERS
4800 S.W. 74th Court, Miami, Florida 33155
(305) 270-9935 Fax (305) 665-5891
HNGS # 12-0009
□ ENRIQUE J. SUAREZ, P.E. (MECHANICAL)
FL REG.#0015794
□ CARLOS GARCIA, P.E. (ELECTRICAL)
FL REG.#0014104

PROFESSIONAL SEAL:



ANTHONY A. SCHULZ, P.E.
FL REG. #0060762

SUBMITTAL DESCRIPTION / MILESTONE:

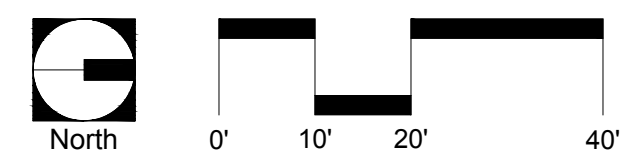
**DEVELOPMENT
APPLICATION
March 3, 2014**

REVISIONS:
1 02/22/2013

DRAWING SHEET INFORMATION
BA PROJECT NO.: 12010
SCALE: AS NOTED
DATE: January 14, 2013
DRAWN BY: CGC
CHECKED BY: AS
CADD FILE: X Truman Waterfront Base.dwg

DRAWING TITLE:
LIGHTING PLAN

SHEET NO.

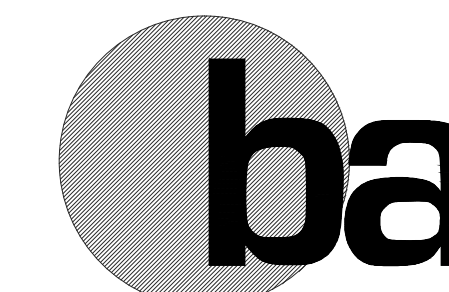


MATCHLINE - SHEET 03
MATCHLINE - SHEET 08

MATCHLINE - SHEET 03
MATCHLINE - SHEET 08

MATCHLINE - SHEET 08
MATCHLINE - SHEET 09

MATCHLINE - SHEET 08
MATCHLINE - SHEET 09



**BERMELLO AJAMIL
& PARTNERS INC**

Architecture • Engineering • Planning
Interior Design • Landscape Architecture
2601 South Bayshore Drive
Suite 1000
Miami, Florida 33133
(305) 859-2050
Fax (305) 860-3700

PREPARED FOR/OWNER:
CITY OF KEY WEST, FL
P. O. BOX 1409
3140 FLAGLER AVENUE
KEY WEST, FL 33041



PROJECT NAME:

**TRUMAN
WATERFRONT
PARK**

PROJECT LOCATION/ADDRESS:

TRUMAN WATERFRONT PARK
WEST OF FORT STREET AND THE
TRUMAN ANNEX DEVELOPMENT,
NORTH OF KEY WEST NAVAL BASE

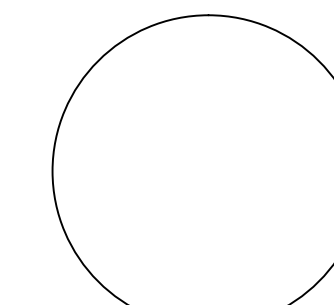
SUB-CONSULTANT INFORMATION:



HUFSEY NICOLAIDES GARCIA &
SUAREZ CONSULTING ENGINEERS
4800 S.W. 74th Court, Miami, Florida 33155
(305) 270-9935 Fax (305) 665-5891
HNGS # 12-0009

□ ENRIQUE J. SUAREZ, P.E. (MECHANICAL)
FL REG.#0015794
□ CARLOS GARCIA, P.E. (ELECTRICAL)
FL REG.#0014104

PROFESSIONAL SEAL:



ANTHONY A. SCHULZ, P.E.
FL REG. #0060762

SUBMITTAL DESCRIPTION / MILESTONE:

**DEVELOPMENT
APPLICATION
March 3, 2014**

REVISIONS:
1 02/22/2013

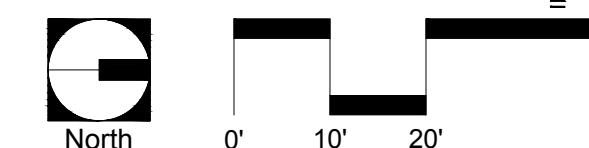
DRAWING SHEET INFORMATION

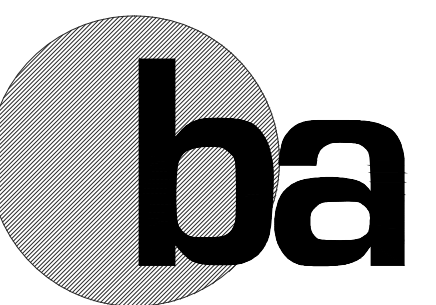
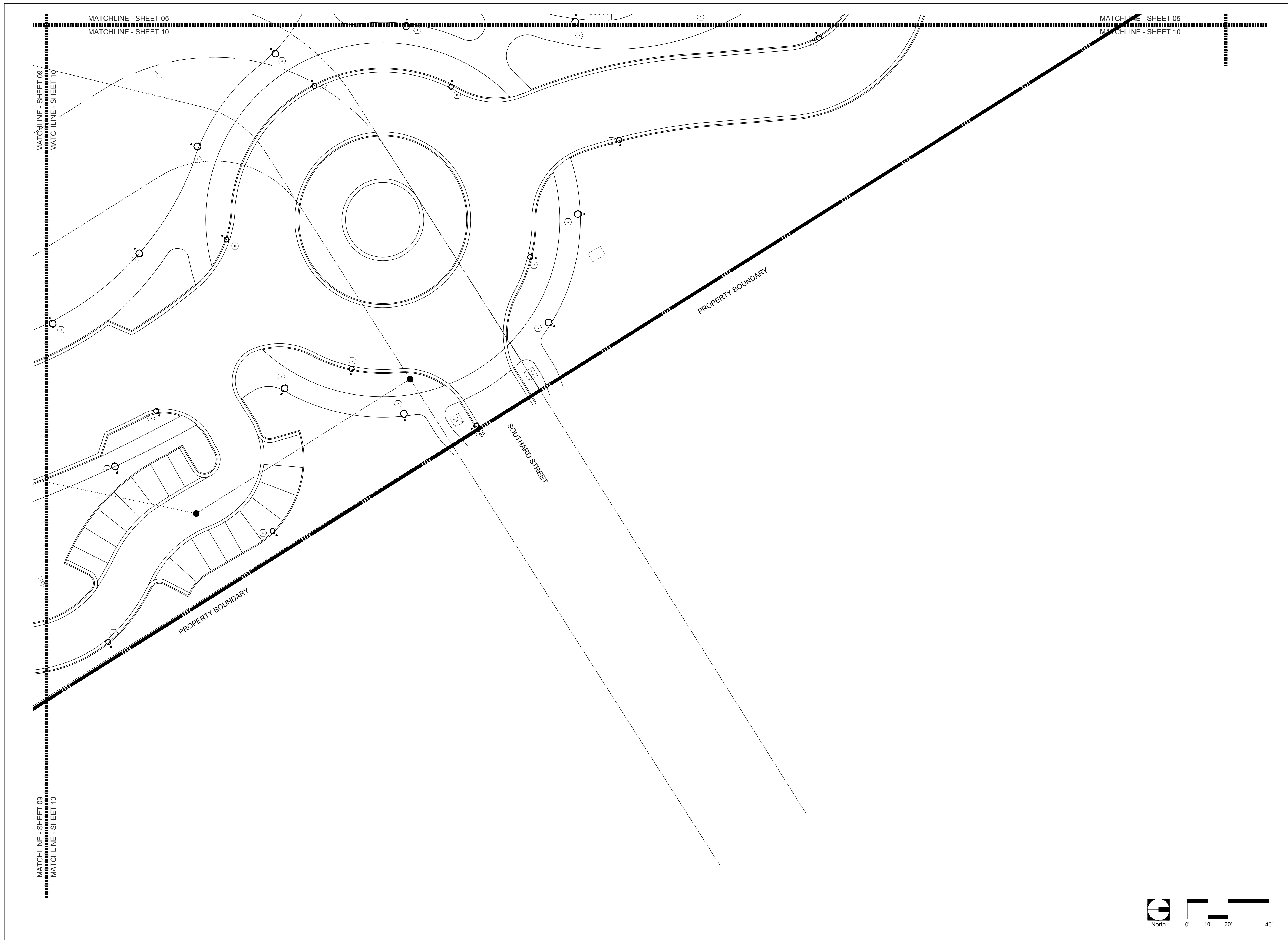
BA PROJECT NO.: 12010
SCALE: AS NOTED
DATE: January 14, 2013
DRAWN BY: CGC
CHECKED BY: AS
CADD FILE: X Truman Waterfront Base.dwg

DRAWING TITLE:
LIGHTING PLAN

SHEET NO.

EE-08





BERMELLO AJAMIL & PARTNERS INC

Architecture • Engineering • Planning
Interior Design • Landscape Architecture
2601 South Bayshore Drive
Suite 1000
Miami, Florida 33133
(305) 859-2050
Fax (305) 860-3700

PREPARED FOR/OWNER:
CITY OF KEY WEST, FL
P. O. BOX 1409
3140 FLAGLER AVENUE
KEY WEST, FL 33041



PROJECT NAME:
TRUMAN WATERFRONT PARK

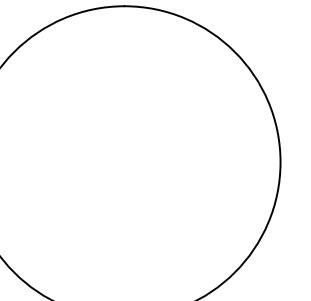
PROJECT LOCATION/ADDRESS:
**TRUMAN WATERFRONT PARK
WEST OF FORT STREET AND THE
TRUMAN ANNEX DEVELOPMENT,
NORTH OF KEY WEST NAVAL BASE**

SUB-CONSULTANT INFORMATION:



HUFSEY NICOLAIDES GARCIA &
SUAREZ CONSULTING ENGINEERS
4800 S.W. 74th Court, Miami, Florida 33155
(305) 270-9935 Fax (305) 665-5891
HNGS # 12-0009
□ ENRIQUE J. SUAREZ, P.E. (MECHANICAL)
FL REG.#0015794
□ CARLOS GARCIA, P.E. (ELECTRICAL)
FL REG.#0014104

PROFESSIONAL SEAL:



ANTHONY A. SCHULZ, P.E.
FL REG. #0060762

SUBMITTAL DESCRIPTION / MILESTONE:

**DEVELOPMENT APPLICATION
March 3, 2014**

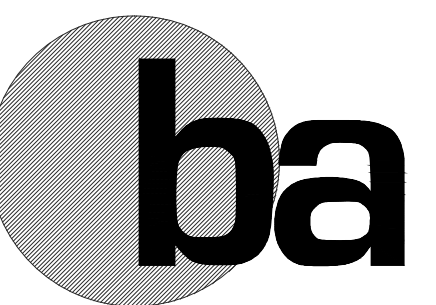
REVISIONS:
1 02/22/2013

DRAWING SHEET INFORMATION
BA PROJECT NO.: 12010
SCALE: AS NOTED
DATE: January 14, 2013
DRAWN BY: CGC
CHECKED BY: AS
CADD FILE: X:\Truman Waterfront Base.dwg

DRAWING TITLE:
LIGHTING PLAN

SHEET NO.

EE-10



**BERMELLO AJAMIL
& PARTNERS INC**

Architecture • Engineering • Planning
Interior Design • Landscape Architecture
2601 South Bayshore Drive
Suite 1000
Miami, Florida 33133
(305) 859-2050
Fax (305) 860-3700

PREPARED FOR/OWNER:
CITY OF KEY WEST, FL
P. O. BOX 1409
3140 FLAGLER AVENUE
KEY WEST, FL 33041



PROJECT NAME:

**TRUMAN
WATERFRONT
PARK**

PROJECT LOCATION/ADDRESS:

TRUMAN WATERFRONT PARK
WEST OF FORT STREET AND THE
TRUMAN ANNEX DEVELOPMENT,
NORTH OF KEY WEST NAVAL BASE

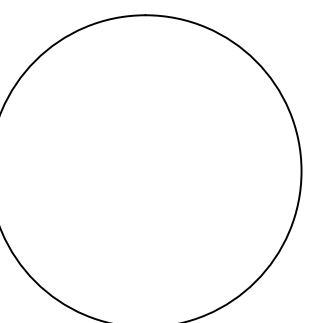
SUB-CONSULTANT INFORMATION:



HUFSEY NICOLAIDES GARCIA &
SUAREZ CONSULTING ENGINEERS
4800 S.W. 74th Court, Miami, Florida 33155
(305) 270-9935 Fax (305) 665-5891
HNGS # 12-0009

□ ENRIQUE J. SUAREZ, P.E. (MECHANICAL)
FL REG.#0015794
□ CARLOS GARCIA, P.E. (ELECTRICAL)
FL REG.#0014104

PROFESSIONAL SEAL:



ANTHONY A. SCHULZ, P.E.
FL REG. #0060762

SUBMITTAL DESCRIPTION / MILESTONE:

**DEVELOPMENT
APPLICATION
March 3, 2014**

REVISIONS:

1 02/22/2013

DRAWING SHEET INFORMATION

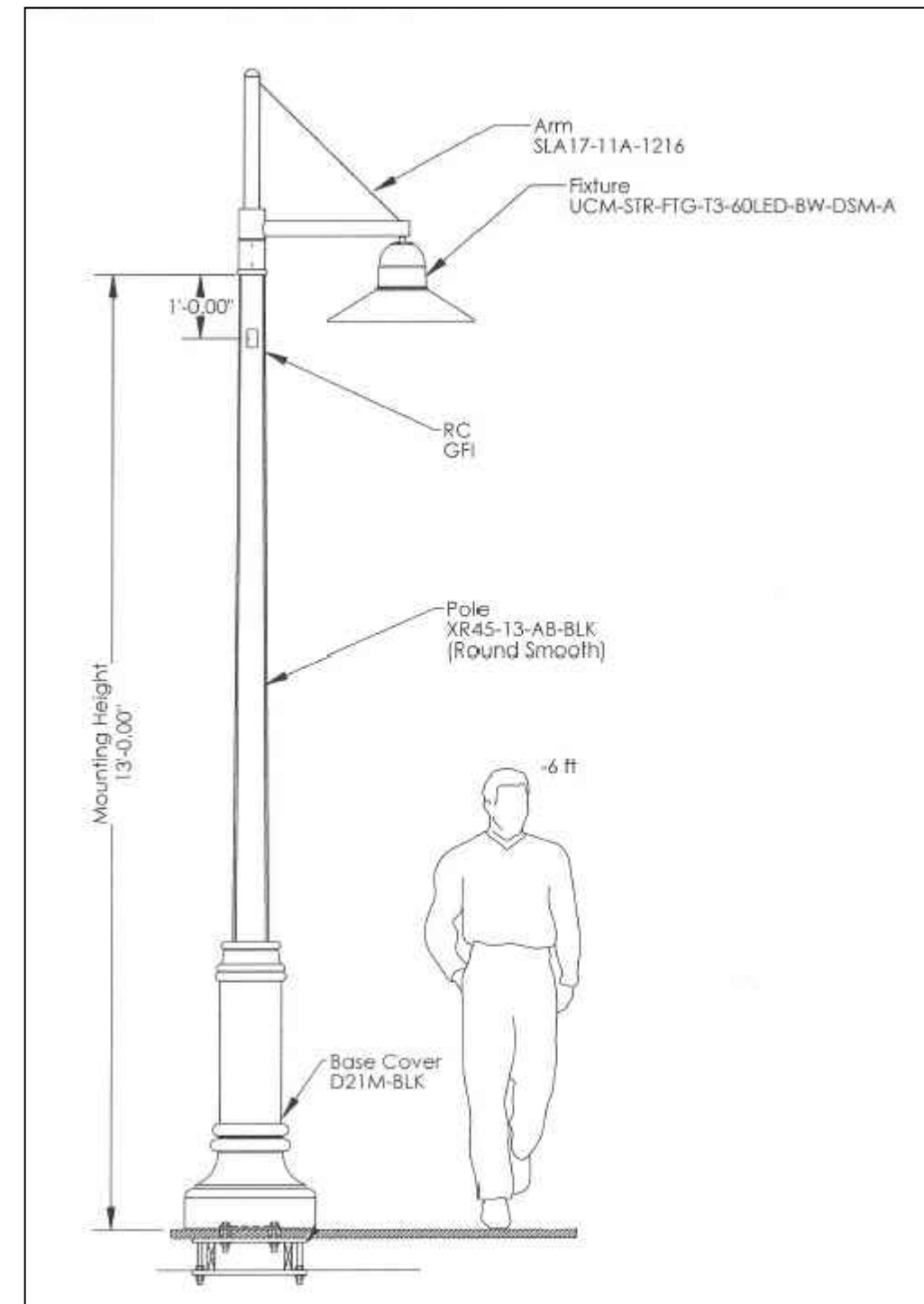
BA PROJECT NO.: 12010
SCALE: AS NOTED
DATE: January 14, 2013
DRAWN BY: CGC
CHECKED BY: AS
CADD FILE: X:\Truman Waterfront Base.dwg

DRAWING TITLE:

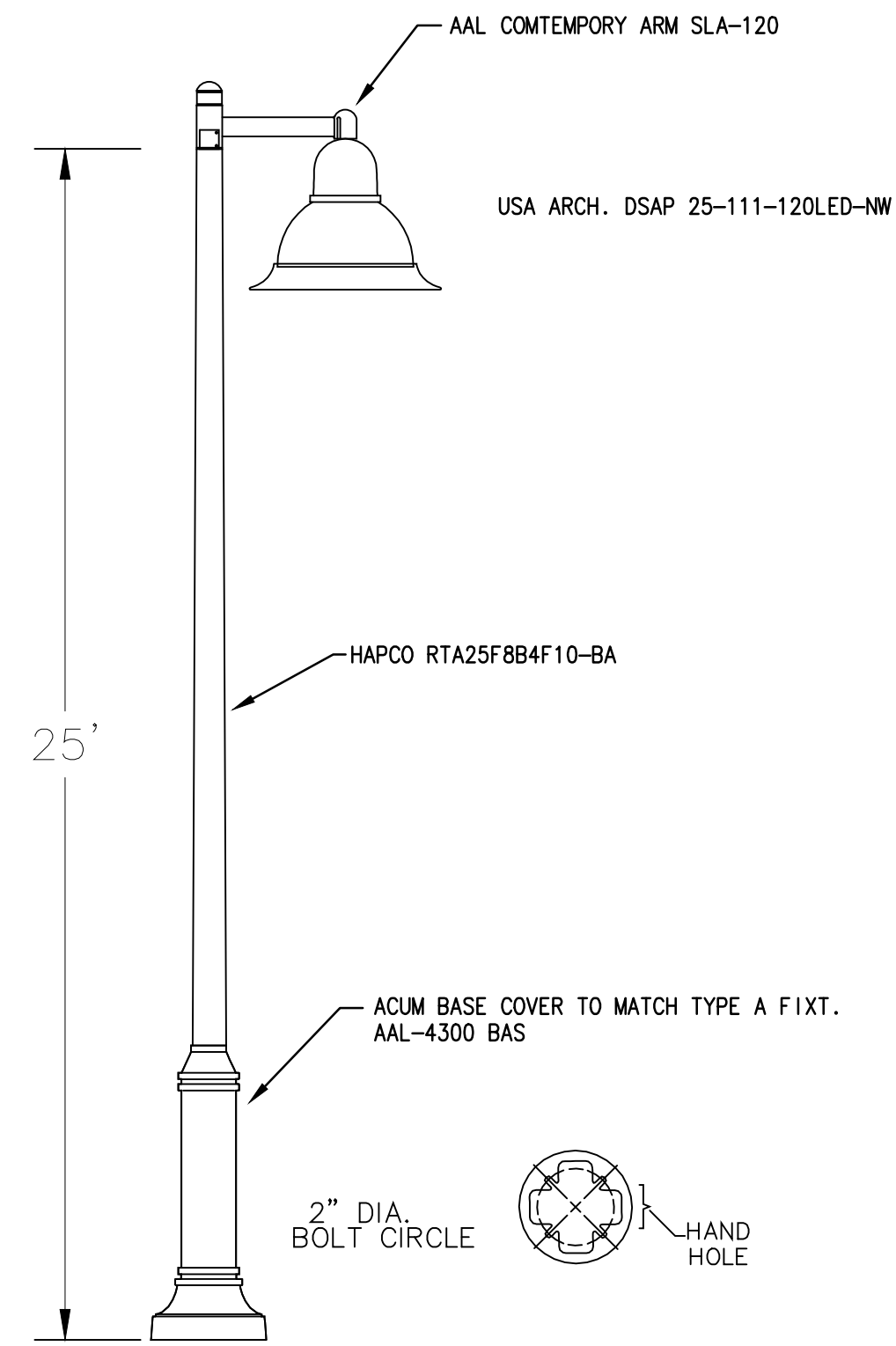
**RECREATIONAL
FIELD
LIGHTING PLAN**

SHEET NO.

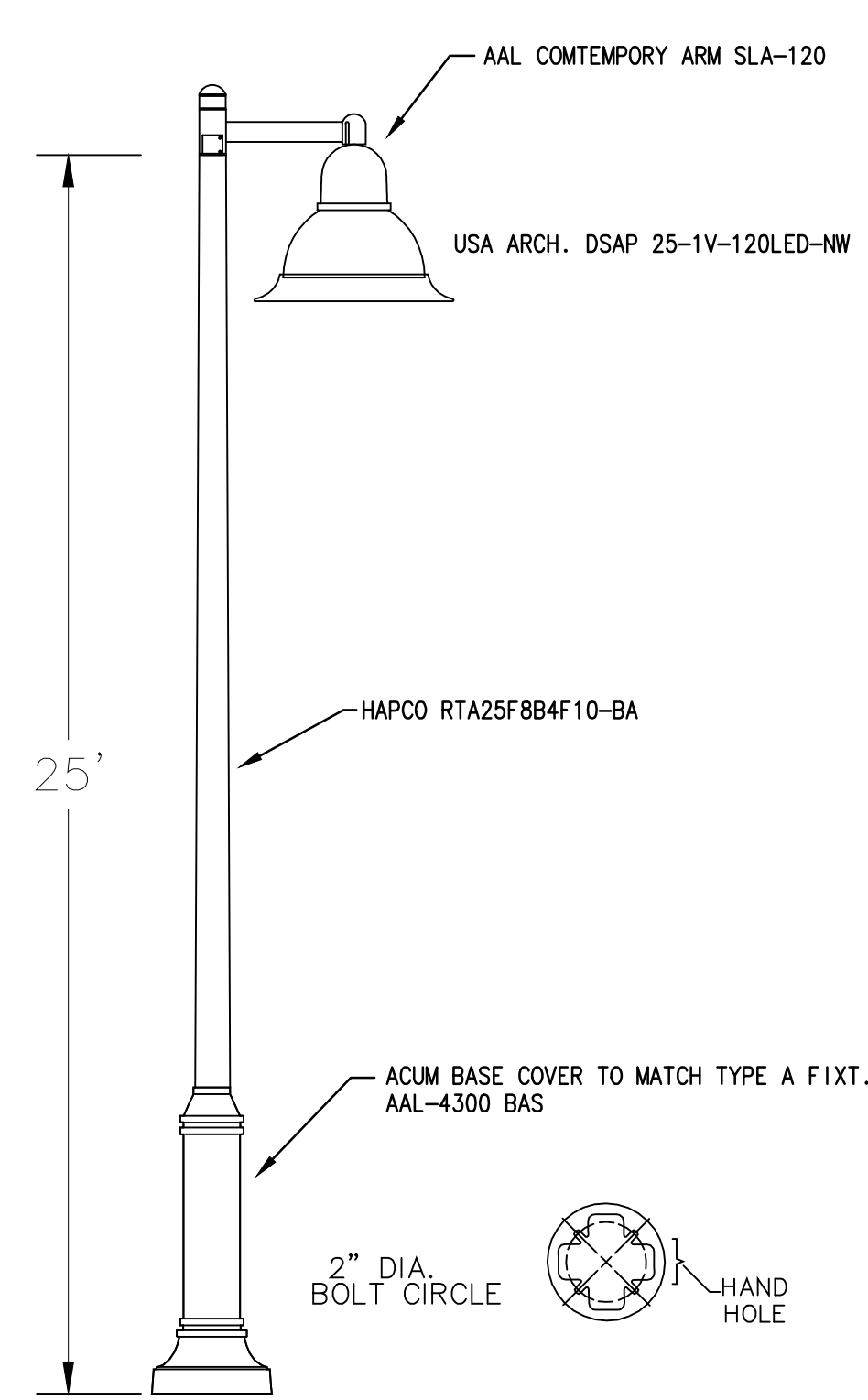
EE-11



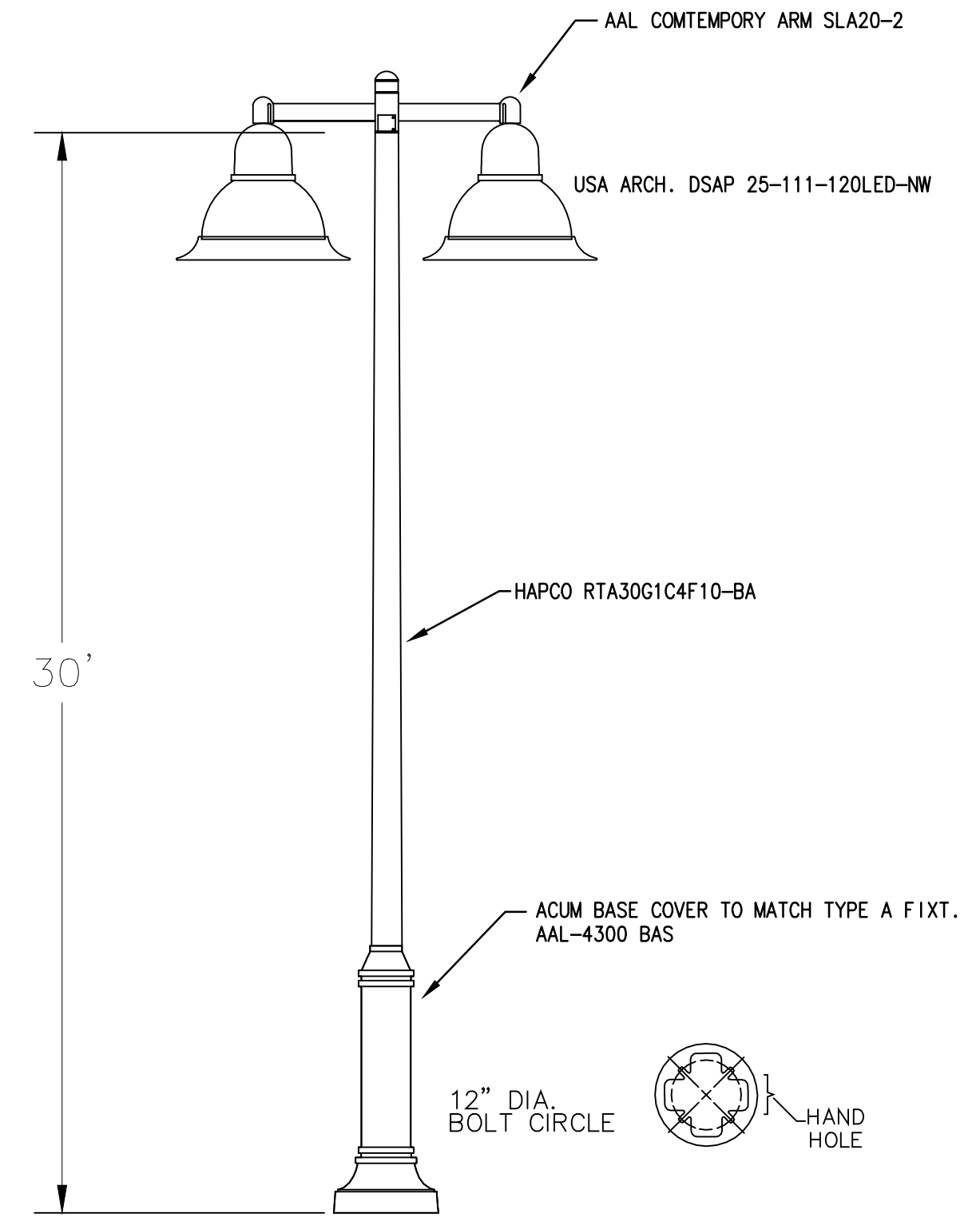
A PEDESTRIAN WALKWAY POLE TYPE A
NTS.



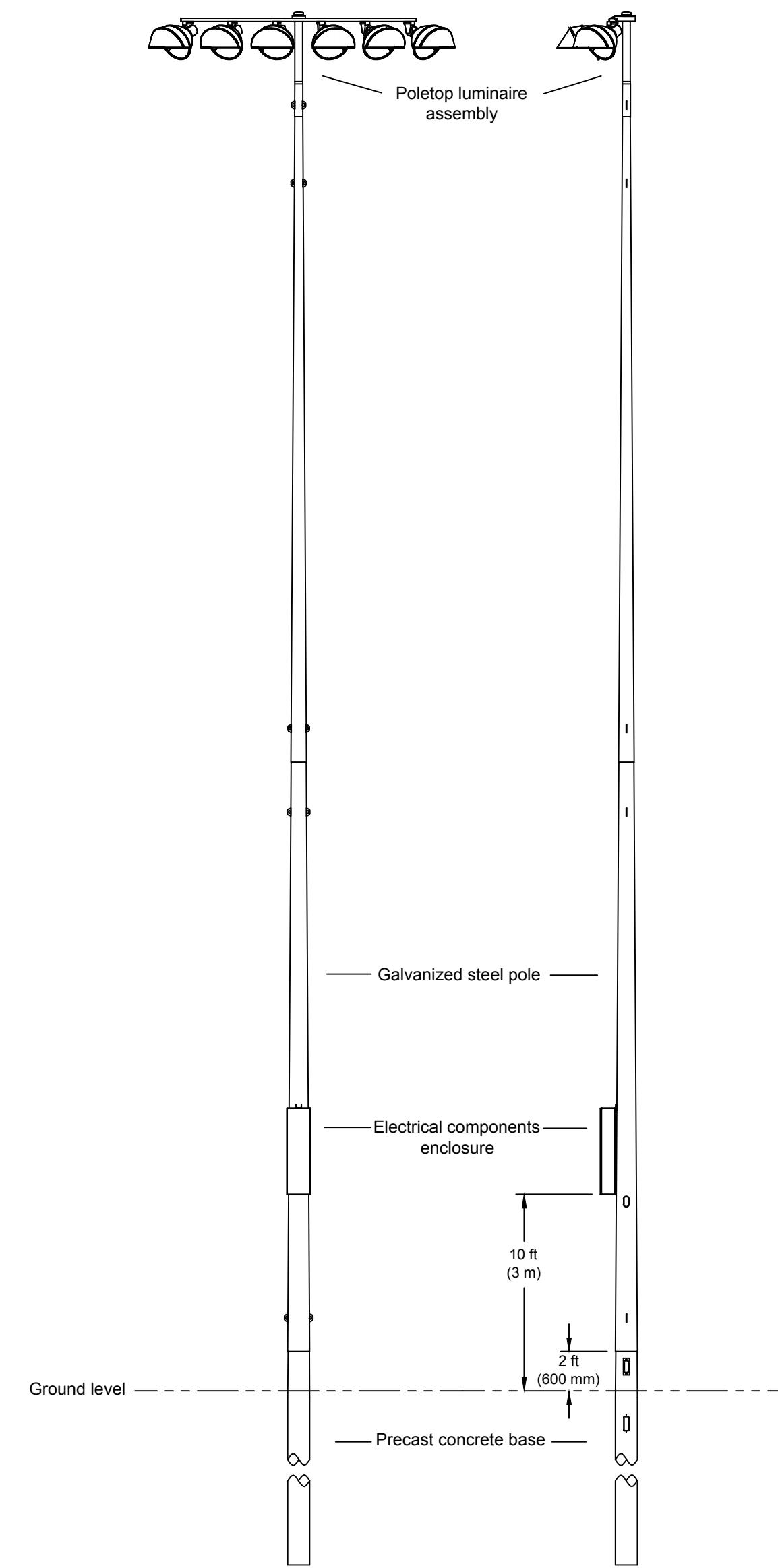
B STREET LIGHT POLE TYPE B
NTS.



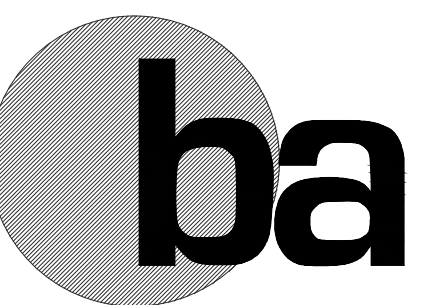
C STREET LIGHT POLE TYPE C
NTS.



D PARKING LOT LIGHT POLE TYPE D
NTS.



E RECREATIONAL FIELD POLE TYPE E
NTS.



BERMELLO AJAMIL & PARTNERS INC
Architecture • Engineering • Planning
Interior Design • Landscape Architecture
2601 South Bayshore Drive
Suite 1000
Miami, Florida 33133
(305) 859-2050
Fax (305) 860-3700

PREPARED FOR/OWNER:
CITY OF KEY WEST, FL
P. O. BOX 1409
3140 FLAGLER AVENUE
KEY WEST, FL 33041



PROJECT NAME:
TRUMAN WATERFRONT PARK

PROJECT LOCATION/ADDRESS:
TRUMAN WATERFRONT PARK
WEST OF FORT STREET AND THE
TRUMAN ANNEX DEVELOPMENT,
NORTH OF KEY WEST NAVAL BASE

SUB-CONSULTANT INFORMATION:
HNGS ENGINEERS
HUFSEY NICOLAIDES GARCIA &
SUAREZ CONSULTING ENGINEERS
4800 S.W. 74th Court, Miami, Florida 33155
(305) 270-9935 Fax (305) 665-5891
HNGS # 12-0009
□ ENRIQUE J. SUAREZ, P.E. (MECHANICAL)
FL REG.#0015794
□ CARLOS GARCIA, P.E. (ELECTRICAL)
FL REG.#0014104

PROFESSIONAL SEAL:

ANTHONY A. SCHULZ, P.E.
FL REG. #0060762

SUBMITTAL DESCRIPTION / MILESTONE:
DEVELOPMENT APPLICATION
March 3, 2014

REVISIONS:
1 02/22/2013

DRAWING SHEET INFORMATION
BA PROJECT NO.: 12010
SCALE: AS NOTED
DATE: January 14, 2013
DRAWN BY: CGC
CHECKED BY: AS
CADD FILE: X:\Truman Waterfront Base.dwg

DRAWING TITLE:
LIGHTING POLE DETAILS

SHEET NO.