



Design Sketch and update for FREDERICK DOUGLASS COMMUNITY CENTER, Main Hall wall soffit



I've included this image to show the mural in thirds. Larger images of each component on following pages.

LEFT THIRD OF MURAL



FDHS Majorette



Steel Pan Kids



*Fats Navarro - looking over the
shoulder of a current day, young, brass
instrument player.*



Brass Legacy



Junior Junkanoo's

LEFT THIRD OF MURAL

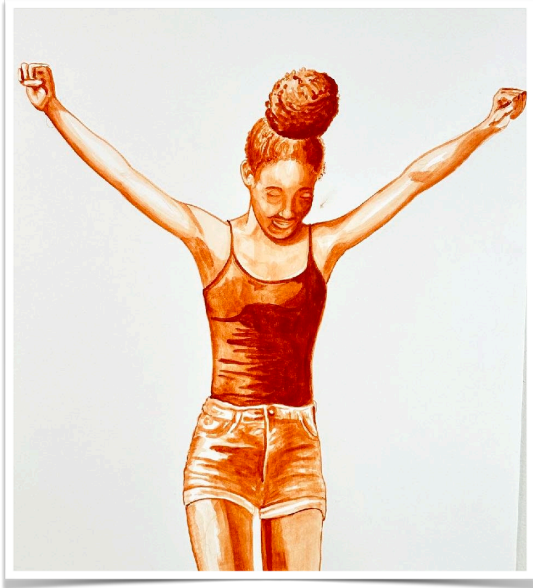


CENTER THIRD OF MURAL

Working to decide the volume of children and tint. Using the number of kids to include from option below, but with image clarity of one above.



RIGHT THIRD OF MURAL



Triumph

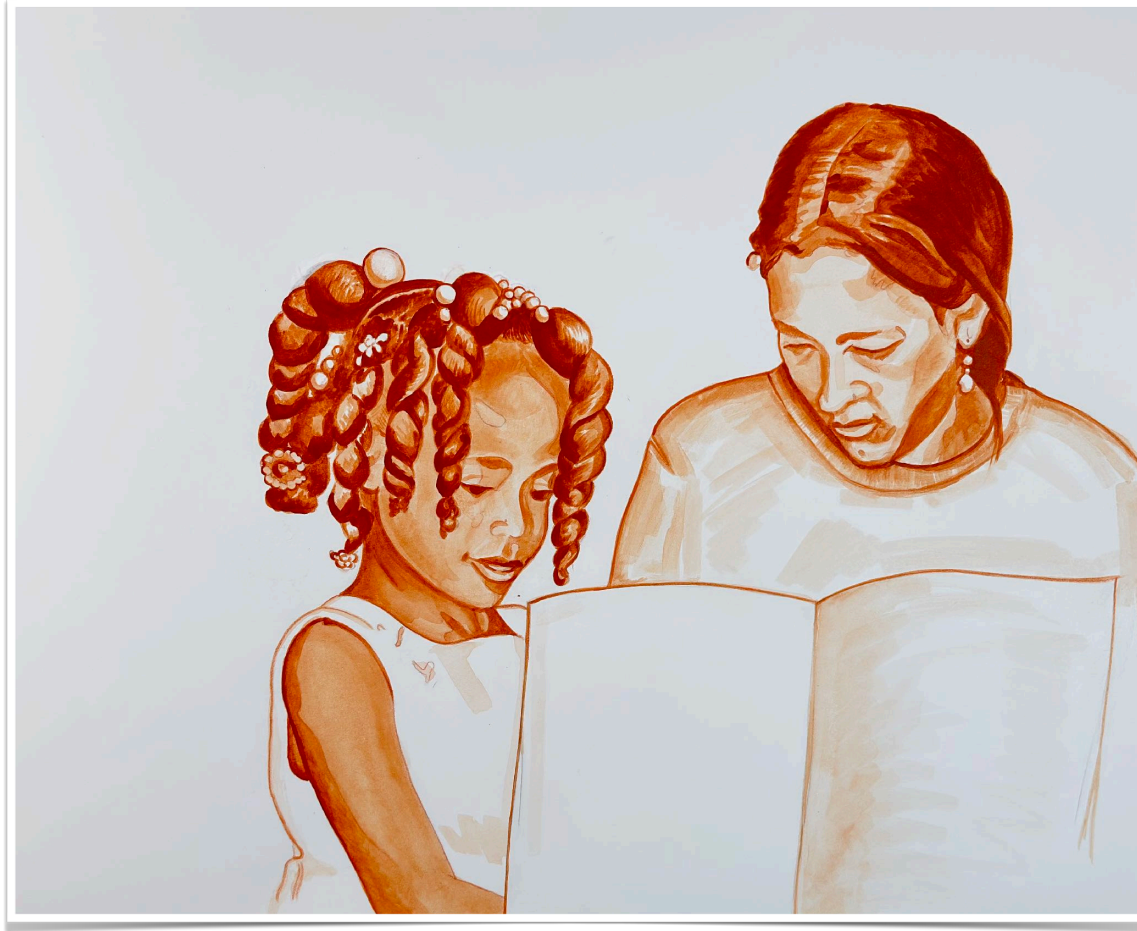


Kee's Shells

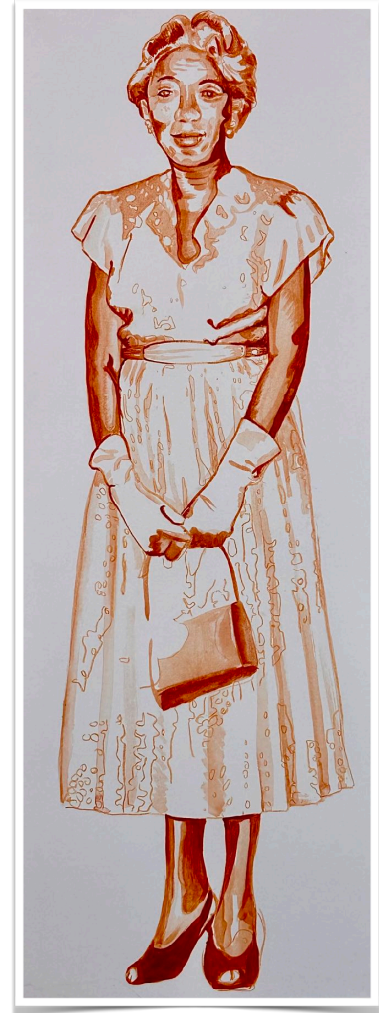


Stilt Kids

RIGHT THIRD OF MURAL



The Music Lesson



Ellen Sanchez

ADDITIONAL DESIGN ELEMENTS – ADINKRA SYMBOLS (BACKGROUND)



Tabono

Oars. Tabono means “oar” or “paddle” in the Adinkra language of Western Africa. It is a symbol of unity of purpose, strength, confidence and hard work to reach a destination or goal.



Bese Saka

Sack of cola nuts. A symbol of affluence, power, abundance, plenty, togetherness, and unity. The cola nut played an important role in the economic life of Ghana. A widely used cash crop, it is closely associated with affluence and abundance. This symbol also represents the role of agriculture and trade in bringing peoples together.



ADDITIONAL DESIGN ELEMENTS – POTENTIAL COLOR PALETTE FOR MAYPOLE RIBBONS, ETC.

IS

REDS & PURPLES

DEEPS & DARKS

SW 9130
Evergreen Fog

SW 6802
Jacaranda

SW 6431
Leapfrog

SW 9148
Smoky Azurite

SW 6208
Pewter Green

SW 6509
Georgian Bay

SW 6051
Sashay Sand

SW 6612
Ravishing Coral

SW 6017
Intuitive

SW 9081
Redend Point

SW 6855
Dragon Fruit

SW 9069
Veri Berri

BLUES & GREENS

REDS & PURPLES

SW 6428
Honeydew

SW 6239
Upward

SW 9043
AquaStone

SW 9138
Stardew

SW 9130
Evergreen Fog

SW 6802
Jacaranda

Carpet Color

*not pantone colors, just for reference right now.



No Border



Border